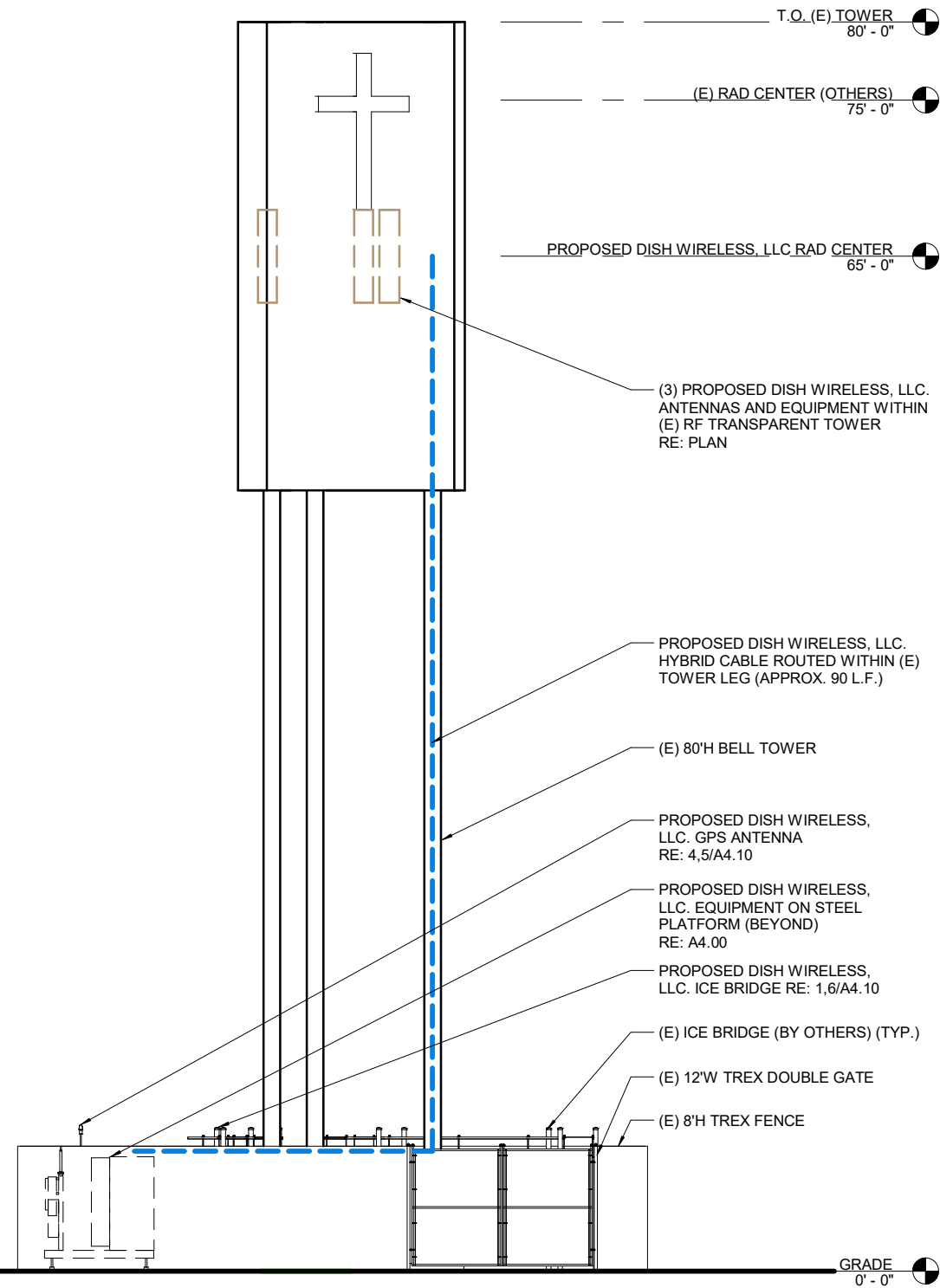


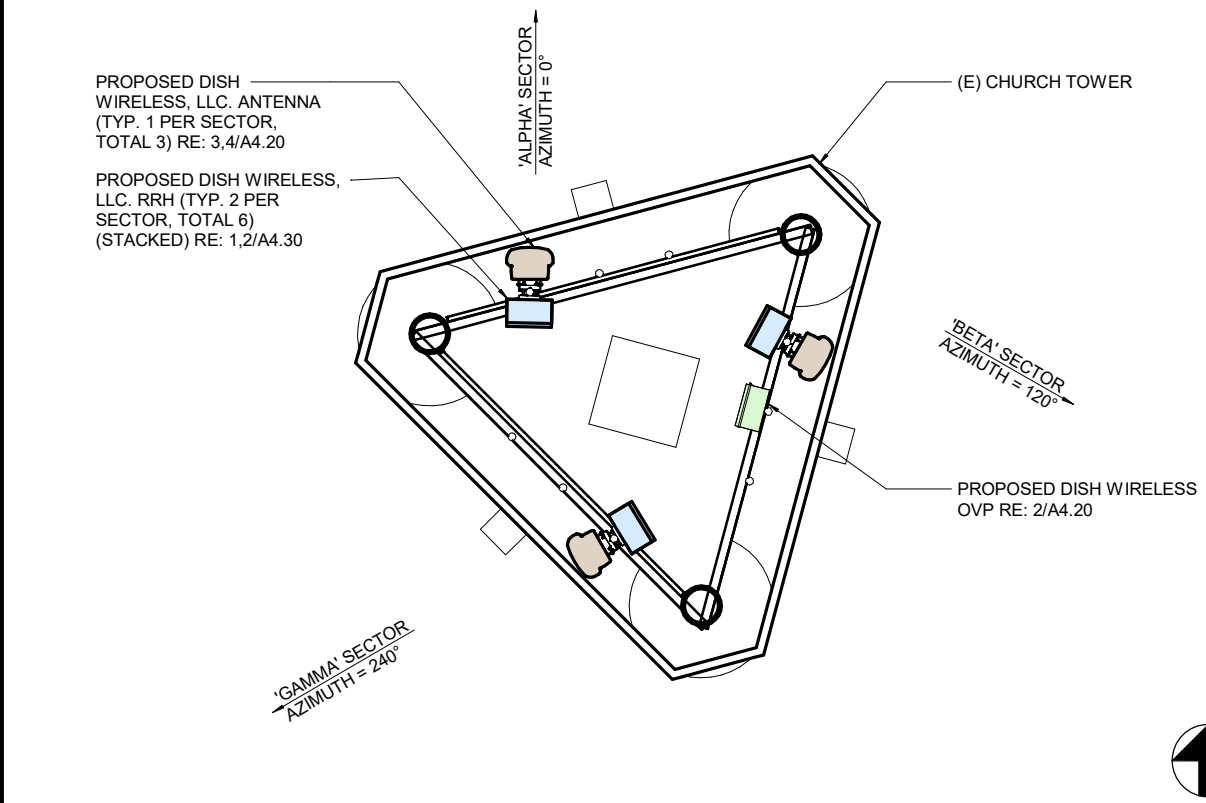
PENETRATIONS
 ANTENNAS
 EXISTING EASEMENT
 LEASE AREA
 ACCESS/UTILITY EASEMENT
 GEN. CONST./UTILITY EASEMENT
 OVP/ELEC. EQ. POWER/GROUNDING
 MW/FIBER EQ. FIBER
 BB/RRH HYBRID & COAX CABLES

NOTES:
 1. CONTRACTOR SHALL FIELD VERIFY ALL DIMENSIONS.
 2. ANTENNAS AND M.W. DISH SPECIFICATIONS REFER TO ANTENNA SCHEDULE AND TO FINAL CONSTRUCTION RFDS FOR ALL RF DETAILS.



3 - NORTH ELEVATION

3/32" = 1'-0"



2 - PROPOSED ANTENNA PLAN

3/16" = 1'-0"

SECTOR	ANTENNA ID	MANUFACTURER - MODEL NUMBER	HEIGHT	AZIMUTH	M-TILT	LOW BAND E-TILT (PORT 1-4)	MID BAND E-TILT (PORT 5-8)
ALPHA	1	MX08FRO665-21	65'-0"	0°	0	2	2
BETA	2	MX08FRO665-21	65'-0"	120°	0	2	2
GAMMA	3	MX08FRO665-21	65'-0"	240°	0	2	2

NOTES:

1. CONTRACTOR TO REFER TO FINAL CONSTRUCTION RFDS FOR ALL RF DETAILS.
 2. ANTENNA OR RRH MODELS MAY CHANGE DUE TO EQUIPMENT AVAILABILITY. ALL EQUIPMENT CHANGES MUST BE APPROVED AND REMAIN IN COMPLIANCE WITH THE PROPOSED DESIGN AND STRUCTURAL ANALYSES.

1 - ANTENNA SCHEDULE

12" = 1'-0"

dish
WIRELESS
 DISH WIRELESS SERVICES
 5701 SOUTH SANTA FE DRIVE
 LITTLETON, CO 80120

CSA
 5935 SOUTH ZANG STREET, SUITE 280
 LITTLETON, COLORADO 80127
 OFFICE: 303.932.9974

CONSULTANT

NOT FOR CONSTRUCTION

IT IS A VIOLATION OF LAW FOR ANY PERSON, UNLESS THEY ARE ACTING UNDER THE DIRECTION OF A LICENSED PROFESSIONAL ENGINEER, TO ALTER THIS DOCUMENT.

DRAWN BY: QTR
 CHECKED BY: NAC
 APPROVED BY: SGP

RFDS REV #: XXX

CONSTRUCTION DOCUMENT

SUBMITTALS

A 09/24/21 CD REVIEW

(VENDOR) PROJECT NUMBER
DNDEN00108A

DISH WIRELESS PROJECT NUMBER

DNDEN00108A
 5605 N MARKS SHEFFEL RD
 COLORADO SPRINGS, CO 80922

SHEET TITLE
ELEVATION, ANTENNA LAYOUT AND SCHEDULE

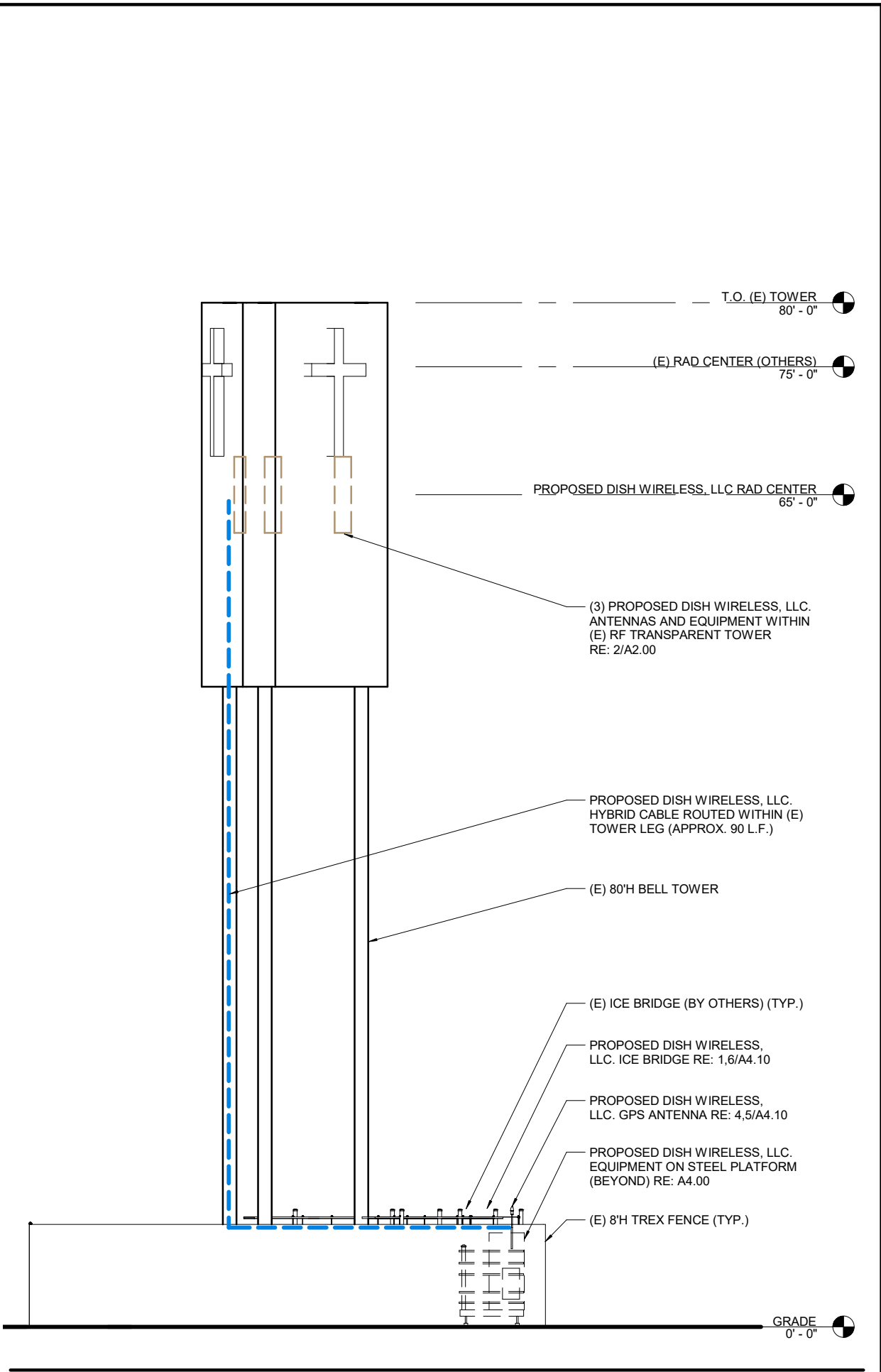
SHEET NUMBER

A2.00

BB/RRH HYBRID & COAX CABLES
 MW/FIBER EQ. FIBER
 OV/PELEC. EQ. POWER/GROUNDING
 ACCESS/UTILITY EASEMENT GEN. CONST./UTILITY EASEMENT
 LEASE AREA EXISTING EASEMENT
 ANTENNAS
 PENETRATIONS

2 - NOT USED

1 - WEST ELEVATION



3/32" = 1'-0"

dish
WIRELESS
 DISH WIRELESS SERVICES
 5701 SOUTH SANTA FE DRIVE
 LITTLETON, CO 80120

CSA
 CONSULTANTS
 5935 SOUTH ZANG STREET, SUITE 280
 LITTLETON, COLORADO 80127
 OFFICE: 303.932.9974

5935 SOUTH ZANG STREET, SUITE 280
 LITTLETON, COLORADO 80127
 OFFICE: 303.932.9974

CONSULTANT

**NOT FOR
 CONSTRUCTION**

IT IS A VIOLATION OF LAW FOR ANY PERSON,
 UNLESS THEY ARE ACTING UNDER THE
 DIRECTION OF A LICENSED PROFESSIONAL
 ENGINEER, TO ALTER THIS DOCUMENT.

DRAWN BY: CHECKED BY: APPROVED BY:

QTR NAC SGP

RFDS REV #: XXX

**CONSTRUCTION
 DOCUMENT**

SUBMITTALS

A 09/24/21 CD REVIEW

(VENDOR) PROJECT NUMBER
DNDEN00108A

DISH WIRELESS PROJECT NUMBER
DNDEN00108A
 5605 N MARKSHEFFEL RD
 COLORADO SPRINGS, CO 80922

SHEET TITLE
ELEVATIONS

SHEET NUMBER
A3.00