



DISH WIRELESS SITE NAME: DISH WIRELESS SITE ID:

DNDEN00108A

DNDEN00108A

TAX AREA:

SBB

PARCEL #:

5316002025

SITE ADDRESS:

**5605 N MARKSHEFFEL RD
COLORADO SPRINGS, CO 80922**

SCOPE OF WORK

THIS IS NOT AN ALL INCLUSIVE LIST. CONTRACTOR SHALL UTILIZE SPECIFIED EQUIPMENT PART OR ENGINEER APPROVED EQUIVALENT. CONTRACTOR SHALL VERIFY ALL NEEDED EQUIPMENT TO PROVIDE A FUNCTIONAL SITE. THE PROJECT GENERALLY CONSISTS OF THE FOLLOWING:

- TOWER SCOPE OF WORK:**
- INSTALL (3) PROPOSED PANEL ANTENNAS (1 PER SECTOR)
 - INSTALL (3) PROPOSED ANTENNA MOUNTS (1 PER SECTOR)
 - INSTALL PROPOSED JUMPERS
 - INSTALL (6) PROPOSED RRUs (2 PER SECTOR)
 - INSTALL (1) OVER VOLTAGE PROTECTION DEVICE (OVP)
 - INSTALL (1) PROPOSED HYBRID CABLE
 - INSTALL (1) PROPOSED HOIST GRIP

- GROUND SCOPE OF WORK:**
- INSTALL (1) PROPOSED METAL PLATFORM
 - INSTALL (1) PROPOSED ICE BRIDGE
 - INSTALL (1) PROPOSED BBU IN CABINET
 - INSTALL (1) PROPOSED PPC CABINET
 - INSTALL (1) PROPOSED EQUIPMENT CABINET
 - INSTALL (1) PROPOSED POWER CONDUIT
 - INSTALL (1) PROPOSED TELCO CONDUIT
 - INSTALL (1) PROPOSED NEMA4 TELCO-FIBER BOX
 - INSTALL (1) PROPOSED GPS ANTENNA
 - INSTALL (1) PROPOSED LTE BACKHAUL ANTENNA
 - INSTALL (1) METER SOCKET
 - INSTALL (1) PROPOSED SAFETY SWITCH (IF REQUIRED)
 - INSTALL (1) FIBER NID (IF REQUIRED)

SITE INFORMATION

PROPERTY OWNER: GATEWAY CURCH
ADDRESS: 5605 N MARKSHEFFEL RD COLORADO SPRINGS CO,80923

TOWER TYPE: BELL TOWER
TOWER SITE ID: N/A

TOWER APP NUMBER: TBD

COUNTY: EL PASO

LATITUDE (NAD 83): 38° 54' 48.1608" N
LONGITUDE (NAD 83): 104° 40' 55.5744" W
LATITUDE (NAD 2C): 38° 54' 48.2" N
LONGITUDE (NAD 2C): 104° 40' 55.6" W

ZONING JURISDICTION: COLORADO SPRINGS, CITY OF

ZONING DISTRICT: RR-5

PARCEL NUMBER: 5316002025

POWER COMPANY: MOUNTAIN VIEW ELECTRIC ASSOCIATION

TELEPHONE COMPANY: ZAYO

PROJECT DIRECTORY

APPLICANT: DISH WIRELESS
5701 SOUTH SANTA FE DR. LITTLETON, CO 80120

TOWER OWNER: BRANCH LYN STEWART
(918) 986-8700

ARCHITECT: SEAN PENDLETON
CSAi
5935 S. ZANG ST., SUITE 280
LITTLETON, CO 80127
(303) 932-9974

SITE ACQUISITION: ASHLEY CHISTENSEN
CSAi
(303) 932-9974

CONSTRUCTION MANAGER: SCOTT TOMLINSON
(720) 788-6655

ZONING MANAGER: COLLEEN NEBEL
(303) 706-5797

RF ENGINEER: ROBERT CARISTAN

SURVEYOR: N/A



DISH WIRELESS SERVICES
5701 SOUTH SANTA FE DRIVE
LITTLETON, CO 80120



5935 SOUTH ZANG STREET, SUITE 280
LITTLETON, COLORADO 80127
OFFICE: 303.932.9974

CONSULTANT

NOT FOR CONSTRUCTION

IT IS A VIOLATION OF LAW FOR ANY PERSON, UNLESS THEY ARE ACTING UNDER THE DIRECTION OF A LICENSED PROFESSIONAL ENGINEER, TO ALTER THIS DOCUMENT.

DRAWN BY:	CHECKED BY:	APPROVED BY:
QTR	NAC	SGP

RFDS REV #: XXX

CONSTRUCTION DOCUMENT

SUBMITTALS

A	09/24/21	CD REVIEW
---	----------	-----------

(VENDOR) PROJECT NUMBER
DNDEN00108A

DISH WIRELESS PROJECT NUMBER

DNDEN00108A
5605 N MARKSHEFFEL RD
COLORADO SPRINGS, CO 80922

SHEET TITLE
TITLE SHEET

SHEET NUMBER
T1.00

CODE COMPLIANCE

ALL WORK SHALL BE PERFORMED AND MATERIALS INSTALLED IN ACCORDANCE WITH THE CURRENT EDITIONS OF THE FOLLOWING CODES AS ADOPTED BY THE LOCAL GOVERNING AUTHORITIES. NOTHING IN THESE PLANS IS TO BE CONSTRUED TO PERMIT WORK NOT CONFORMING TO THESE CODES:

OCCUPANCY GROUP: U
CONSTRUCTION TYPE: V-B

GOVERNING CODES IF APPLICABLE:
2015 IBC, 2015 IMC, 2015 IFC, 2017 NEC, 2017 PPRBC

A.D.A COMPLIANCE:
THIS FACILITY IS UNMANNED AND NOT FOR HUMAN HABITATION.

REFER TO SHEET GM3.00 FOR BATTERY DATA.

PROPOSED WORK IS COMPLIANT WITH 6409(a) ELIGIBLE FACILITIES REQUEST CRITERIA.

SITE PHOTO



UNDERGROUND SERVICE ALERT
UTILITY NOTIFICATION CENTER OF COLORADO
1-800-922-1987
WWW.UNCC.ORG
3 WORKING DAYS UTILITY NOTIFICATION PRIOR TO CONSTRUCTION



GENERAL NOTES

THE FACILITY IS UNMANNED AND NOT FOR HUMAN HABITATION. A TECHNICIAN WILL VISIT THE SITE AS REQUIRED FOR ROUTE MAINTANANCE. THE PROJECT WILL NOT RESULT IN ANY SIGNIFICANT DISTURBANCE OR EFFECT ON DRAINAGE. NO SANITARY SEWER SERVICE, POTABLE WATER, OR TRASH DISPOSAL IS REQUIRED AND NO COMMERCIAL SIGNAGE IS PROPOSED.

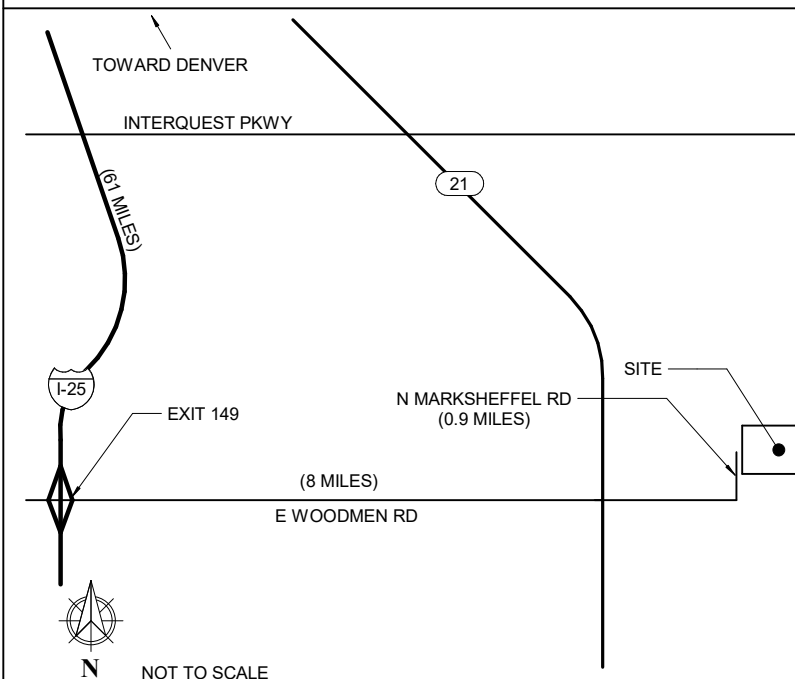
11"x17" PLOT WILL BE TO SCALE

CONTRACTOR SHALL VERIFY ALL PLANS, EXISTING DIMENSIONS, AND CONDITIONS ON THE JOB SITE, AND SHALL IMMEDIATELY NOTIFY THE ENGINEER IN WRITING OF ANY DISCREPANCIES BEFORE PROCEEDING WITH THE WORK.

DIRECTIONS

- DIRECTIONS FROM DOWNTOWN DENVER:
- I-25 S TO E WOODMEN RD (6.1 MILES)
 - EXIT 149 TO E WOODMEN RD (8 MILES)
 - RIGHT ON MARKSHEFFEL RD (0.9 MILES)
 - SITE IS SECOND LOT ON THE RIGHT

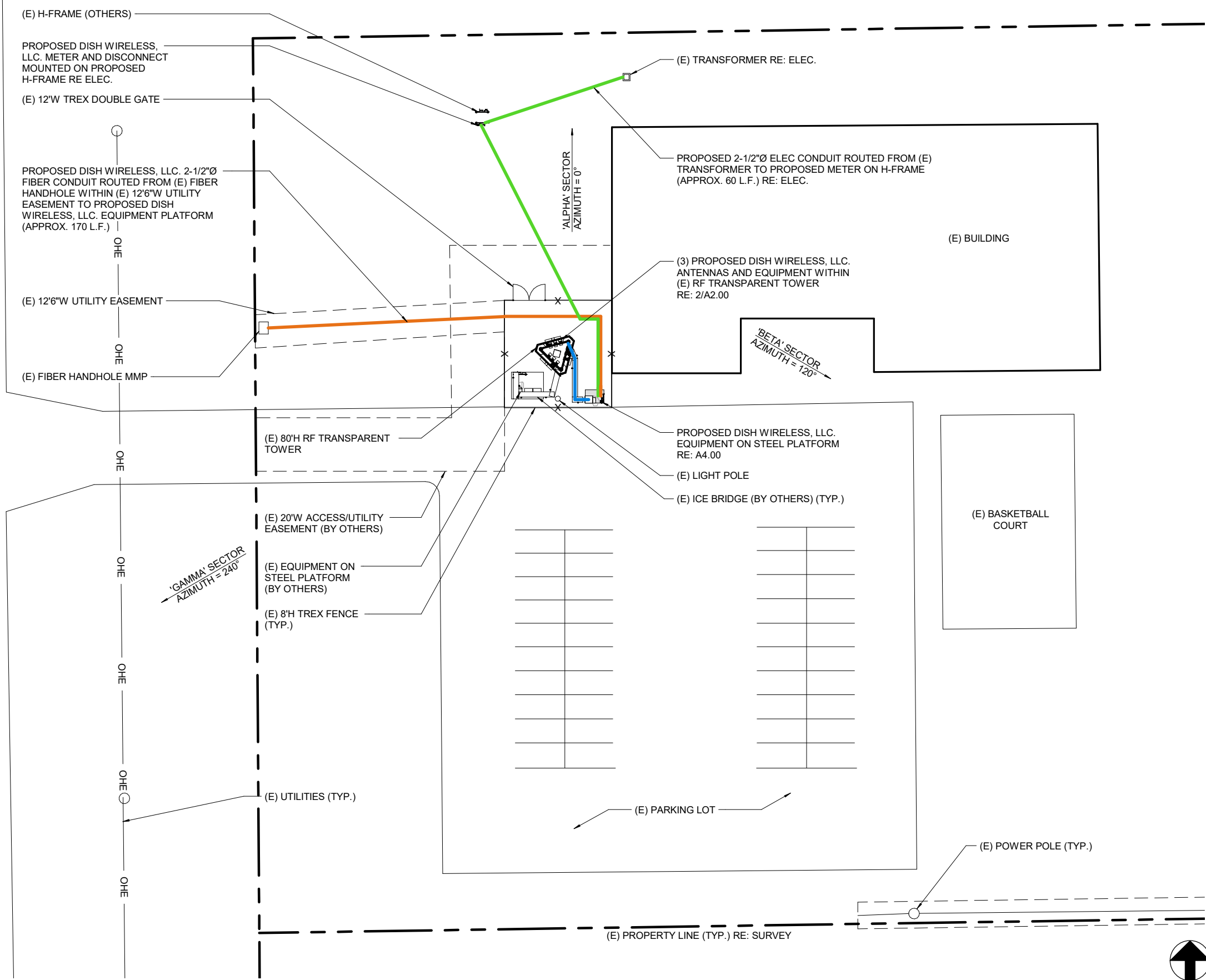
VICINITY MAP



PENETRATIONS
ANTENNAS
LEASE AREA
EXISTING EASEMENT
ACCESS/UTILITY EASEMENT
GEN. CONST. UTILITY EASEMENT
OVP/ELEC. EQ.
POWER/GROUNDING
MW/FIBER EQ.
FIBER
BBU/RRH
HYBRID & COAX CABLES

BB/RRH HYBRID & COAX CABLES
 MW/FIBER EQ. FIBER
 OV/PELEC. EQ. POWER/GROUNDING
 ACCESS/UTILITY EASEMENT GEN. CONST. UTILITY EASEMENT
 LEASE AREA EXISTING EASEMENT
 ANTENNAS
 PENETRATIONS

NORTH MARKSHEFFEL ROAD



1 - SITE PLAN

1" = 40'-0"

dish
WIRELESS
 DISH WIRELESS SERVICES
 5701 SOUTH SANTA FE DRIVE
 LITTLETON, CO 80120

CSA
 5935 SOUTH ZANG STREET, SUITE 280
 LITTLETON, COLORADO 80127
 OFFICE: 303.932.9974

CONSULTANT

NOT FOR CONSTRUCTION

IT IS A VIOLATION OF LAW FOR ANY PERSON, UNLESS THEY ARE ACTING UNDER THE DIRECTION OF A LICENSED PROFESSIONAL ENGINEER, TO ALTER THIS DOCUMENT.

DRAWN BY:	CHECKED BY:	APPROVED BY:
QTR	NAC	SGP

RFDS REV #: XXX

CONSTRUCTION DOCUMENT

SUBMITTALS

A	09/24/21	CD REVIEW
---	----------	-----------

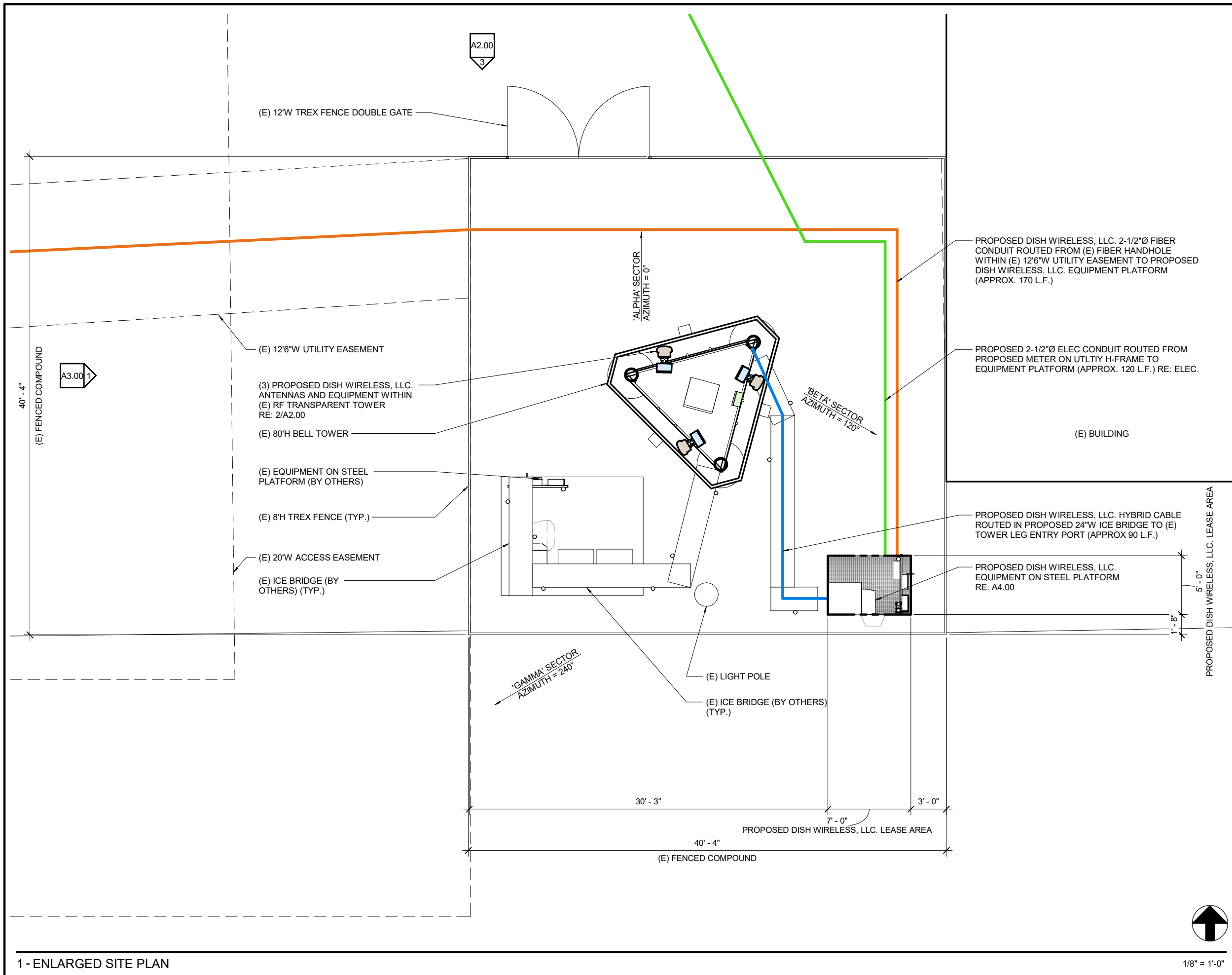
(VENDOR) PROJECT NUMBER
DNDEN00108A

DISH WIRELESS PROJECT NUMBER
DNDEN00108A
5605 N MARKSHEFFEL RD
COLORADO SPRINGS, CO 80922

SHEET TITLE
SITE PLAN

SHEET NUMBER
A1.00

BB/RRH HYBRID & COAX CABLES
 MW/FIBER EQ. FIBER
 OV/ELEC. EQ. POWER/GROUNDING
 ACCESS/UTILITY EASEMENT GEN. CONST. UTILITY EASEMENT
 LEASE AREA EXISTING EASEMENT
 ANTENNAS
 PENETRATIONS



1 - ENLARGED SITE PLAN

dish
WIRELESS
 DISH WIRELESS SERVICES
 5701 SOUTH SANTA FE DRIVE
 LITTLETON, CO 80120

CSA
 5935 SOUTH ZANG STREET, SUITE 280
 LITTLETON, COLORADO 80127
 OFFICE: 303.932.9974

CONSULTANT

NOT FOR CONSTRUCTION

IT IS A VIOLATION OF LAW FOR ANY PERSON, UNLESS THEY ARE ACTING UNDER THE DIRECTION OF A LICENSED PROFESSIONAL ENGINEER, TO ALTER THIS DOCUMENT.

DRAWN BY:	CHECKED BY:	APPROVED BY:
QTR	NAC	SGP

RFDS REV #: XXX

CONSTRUCTION DOCUMENT

SUBMITTALS

A	09/24/21	CD REVIEW
---	----------	-----------

(VENDOR) PROJECT NUMBER
DN DEN00108A

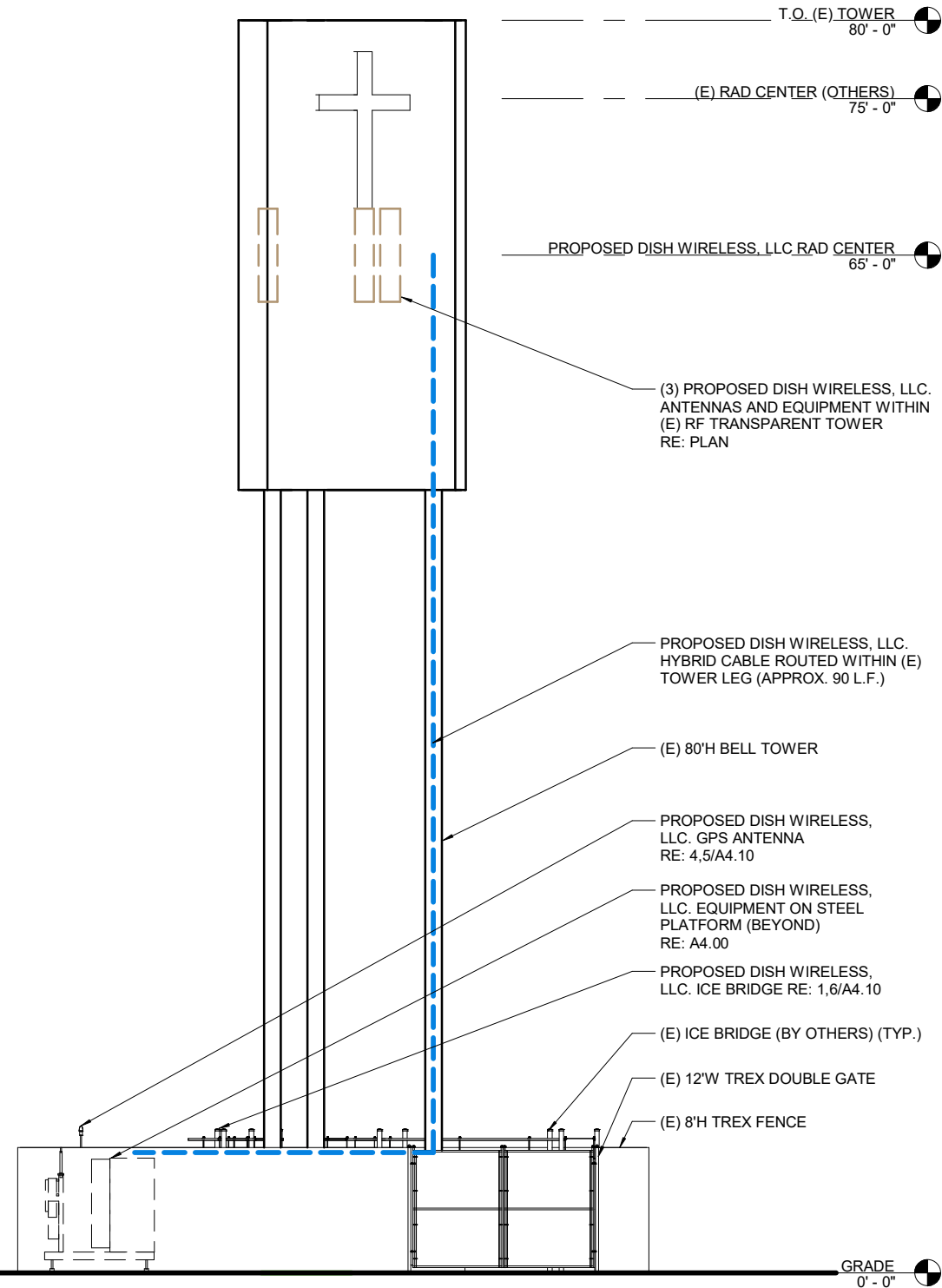
DISH WIRELESS PROJECT NUMBER
DN DEN00108A
5605 N MARKS SHEFFEL RD
COLORADO SPRINGS, CO 80922

SHEET TITLE
ENLARGED SITE PLAN

SHEET NUMBER
A1.10

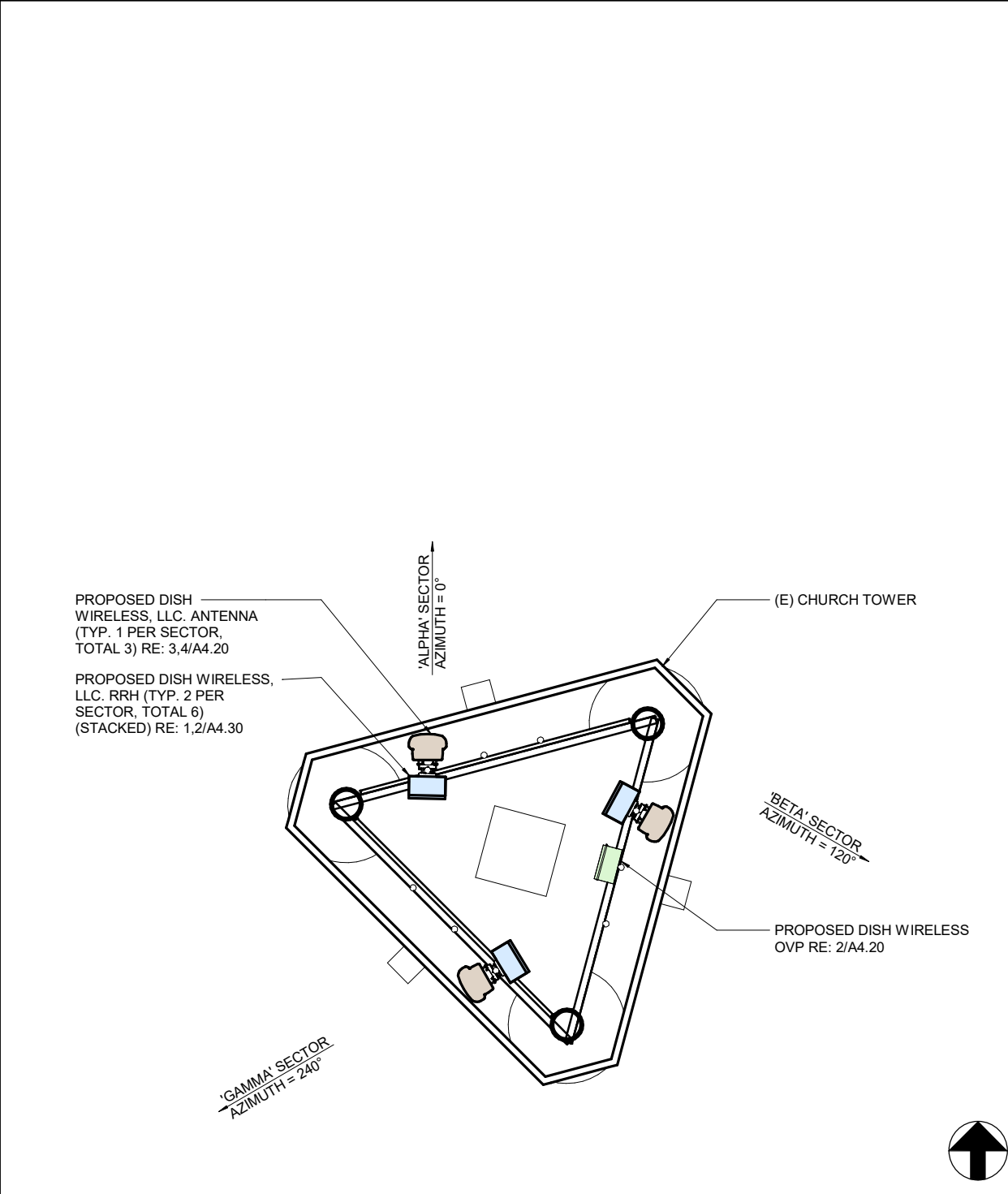
PENETRATIONS
 ANTENNAS
 LEASE AREA
 EXISTING EASEMENT
 ACCESS/UTILITY EASEMENT
 GEN. CONST./UTILITY EASEMENT
 OVP/ELEC. EQ.
 POWER/GROUNDING
 MW/FIBER EQ.
 FIBER
 BB/RRH
 HYBRID & COAX CABLES

NOTES:
 1. CONTRACTOR SHALL FIELD VERIFY ALL DIMENSIONS.
 2. ANTENNAS AND M.W. DISH SPECIFICATIONS REFER TO ANTENNA SCHEDULE AND TO FINAL CONSTRUCTION RFDS FOR ALL RF DETAILS.



3 - NORTH ELEVATION

3/32" = 1'-0"



2 - PROPOSED ANTENNA PLAN

3/16" = 1'-0"

SECTOR	ANTENNA ID	MANUFACTURER - MODEL NUMBER	HEIGHT	AZIMUTH	M-TILT	LOW BAND E-TILT (PORT 1-4)	MID BAND E-TILT (PORT 5-8)
ALPHA	1	MX08FRO665-21	65'-0"	0°	0	2	2
BETA	2	MX08FRO665-21	65'-0"	120°	0	2	2
GAMMA	3	MX08FRO665-21	65'-0"	240°	0	2	2

NOTES:

1. CONTRACTOR TO REFER TO FINAL CONSTRUCTION RFDS FOR ALL RF DETAILS.
 2. ANTENNA OR RRH MODELS MAY CHANGE DUE TO EQUIPMENT AVAILABILITY. ALL EQUIPMENT CHANGES MUST BE APPROVED AND REMAIN IN COMPLIANCE WITH THE PROPOSED DESIGN AND STRUCTURAL ANALYSES.

1 - ANTENNA SCHEDULE

12" = 1'-0"

dish
WIRELESS
 DISH WIRELESS SERVICES
 5701 SOUTH SANTA FE DRIVE
 LITTLETON, CO 80120

CSA
 5935 SOUTH ZANG STREET, SUITE 280
 LITTLETON, COLORADO 80127
 OFFICE: 303.932.9974

CONSULTANT

NOT FOR
 CONSTRUCTION

IT IS A VIOLATION OF LAW FOR ANY PERSON,
 UNLESS THEY ARE ACTING UNDER THE
 DIRECTION OF A LICENSED PROFESSIONAL
 ENGINEER, TO ALTER THIS DOCUMENT.

DRAWN BY:	CHECKED BY:	APPROVED BY:
QTR	NAC	SGP

RFDS REV #: XXX

**CONSTRUCTION
 DOCUMENT**

SUBMITTALS

A	09/24/21	CD REVIEW
---	----------	-----------

(VENDOR) PROJECT NUMBER
DNDEN00108A

DISH WIRELESS PROJECT NUMBER

DNDEN00108A
 5605 N MARKS SHEFFEL RD
 COLORADO SPRINGS, CO 80922

SHEET TITLE
**ELEVATION, ANTENNA
 LAYOUT AND SCHEDULE**

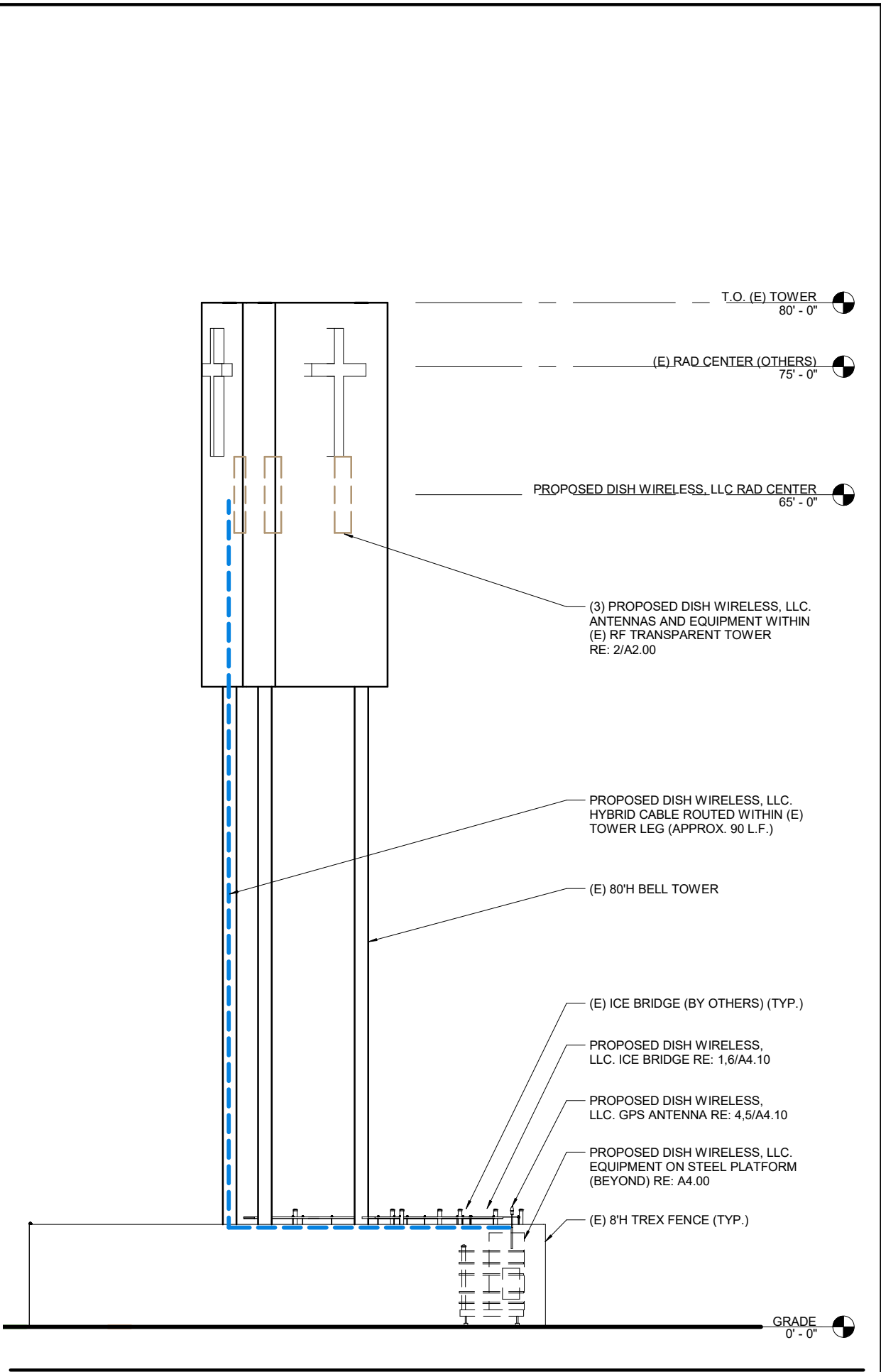
SHEET NUMBER

A2.00

BB/RRH HYBRID & COAX CABLES
 MW/FIBER EQ. FIBER
 OV/PELEC. EQ. POWER/GROUNDING
 ACCESS/UTILITY EASEMENT GEN. CONST./UTILITY EASEMENT
 LEASE AREA EXISTING EASEMENT
 ANTENNAS
 PENETRATIONS

2 - NOT USED

1 - WEST ELEVATION



3/32" = 1'-0"

dish
WIRELESS
 DISH WIRELESS SERVICES
 5701 SOUTH SANTA FE DRIVE
 LITTLETON, CO 80120

CSA
 CONSULTANTS
 5935 SOUTH ZANG STREET, SUITE 280
 LITTLETON, COLORADO 80127
 OFFICE: 303.932.9974

CONSULTANT

NOT FOR CONSTRUCTION

IT IS A VIOLATION OF LAW FOR ANY PERSON, UNLESS THEY ARE ACTING UNDER THE DIRECTION OF A LICENSED PROFESSIONAL ENGINEER, TO ALTER THIS DOCUMENT.

DRAWN BY:	CHECKED BY:	APPROVED BY:
QTR	NAC	SGP

RFDS REV #: XXX

CONSTRUCTION DOCUMENT

SUBMITTALS

A	09/24/21	CD REVIEW
---	----------	-----------

(VENDOR) PROJECT NUMBER
DNDEN00108A

DISH WIRELESS PROJECT NUMBER
DNDEN00108A
 5605 N MARKSHEFFEL RD
 COLORADO SPRINGS, CO 80922

SHEET TITLE
ELEVATIONS

SHEET NUMBER
A3.00