

GENERAL NOTES:
 SEE SHEET 2.

STANDARD CONSTRUCTION NOTES:

- ALL DRAINAGE AND ROADWAY CONSTRUCTION SHALL MEET THE STANDARDS AND SPECIFICATIONS OF THE CITY OF COLORADO SPRINGS/EL PASO COUNTY DRAINAGE CRITERIA MANUAL VOLUMES 1 AND 2, AND THE EL PASO COUNTY ENGINEERING CRITERIA MANUAL.
- CONTRACTOR SHALL BE RESPONSIBLE FOR THE NOTIFICATION AND FIELD LOCATION OF ALL EXISTING UTILITIES, WHETHER SHOWN ON THE PLANS OR NOT, BEFORE BEGINNING CONSTRUCTION. LOCATION OF EXISTING UTILITIES SHALL BE VERIFIED BY THE CONTRACTOR PRIOR TO CONSTRUCTION. CALL 811 TO CONTACT THE UTILITY NOTIFICATION CENTER OF COLORADO (UNCC).
- CONTRACTOR SHALL KEEP A COPY OF THESE APPROVED PLANS, THE GRADING AND EROSION CONTROL PLAN, THE STORMWATER MANAGEMENT PLAN (SWMP), THE SOILS AND GEOTECHNICAL REPORT AND THE APPROPRIATE DESIGN AND CONSTRUCTION STANDARDS AND SPECIFICATIONS AT THE JOB SITE AT ALL TIME INCLUDING THE FOLLOWING:
 - EL PASO COUNTY ENGINEERING CRITERIA MANUAL (ECM)
 - CITY OF COLORADO SPRINGS/EL PASO COUNTY ENGINEERING CRITERIA MANUAL VOLUMES 1 AND 2.
 - COLORADO DEPARTMENT OF TRANSPORTATION (CDOT) STANDARDS SPECIFICATION FOR ROAD AND BRIDGE CONSTRUCTION.
 - CDOT M&S STANDARDS.
- IT IS THE DESIGN ENGINEERS RESPONSIBILITY TO ACCURACY SHOW EXISTING CONDITION BOTH ONSITE AND OFFSITE ON THE CONSTRUCTION PLANS. ANY MODIFICATION NECESSARY DUE TO CONFLICT OMISSIONS OR CHANGED CONDITIONS WILL BE ENTIRELY THE DEVELOPERS RESPONSIBILITY TO RECTIFY.
- IT IS THE CONTRACTORS RESPONSIBILITY TO UNDERSTAND THE REQUIREMENTS OF ALL JURISDICTIONAL AGENCIES AND TO OBTAIN ALL REQUIRED PERMITS, INCLUDING BUT NOT LIMITED TO EL PASO COUNTY EROSION AND STORM WATER QUALITY CONTROL PERMIT (ESQCP), REGIONAL BUILDING FLOODPLAIN DEVELOPMENT PERMIT, US ARMY CORPS OF ENGINEER ISSUED 401 AND/OR 404 PERMITS AND COUNTY AND STATE FUGITIVE DUST PERMITS.
- ANY TEMPORARY SIGNAGE AND STRIPING SHALL COMPLY WITH EL PASO COUNTY DOW AND MUTCD CRITERIA.
- CONTRACTOR SHALL OBTAIN ANY PERMITS REQUIRED BY EL PASO COUNTY DOT INCLUDING WORK WITHIN THE RIGHT-OF-WAY AND SPECIAL TRANSPORT PERMITS.
- THE LIMITS OF CONSTRUCTION SHALL REMAIN WITHIN THE PROPERTY LINE UNLESS OTHERWISE NOTED. THE OWNER/DEVELOPER SHALL OBTAIN WRITTEN PERMISSION AND EASEMENTS, WHERE REQUIRED, FROM ADJOINING PROPERTY OWNER(S) PRIOR TO ANY OFFSITE DISTURBANCE GRADING, OR CONSTRUCTION.

STORM SEWER GENERAL NOTES

- ALL STATIONING IS ALONG STORM SEWER CENTERLINE UNLESS OTHERWISE INDICATED. ALL ELEVATIONS ARE INVERT UNLESS OTHERWISE INDICATED.
- ALL STORM SEWER BENDS AND WYES SHOWN ON THE PLAN SHALL BE PREFABRICATED.
- HORIZONTAL AND VERTICAL BENDS ARE INDICATED ON THE PLANS.
- JOINTS SHALL BE IN ACCORDANCE WITH ASTM C443 "STANDARD SPECIFICATIONS FOR JOINTS FOR CIRCULAR CONCRETE SEWER AND CULVERT PIPE USING RUBBER GASKET." IN NO CASE SHALL THE MAXIMUM JOINT OPENING FOR STRAIGHT ALIGNMENT EXCEED 1 INCH OR ONE AND ONE-HALF INCH ON CURVED ALIGNMENT.
- INLET DIMENSIONS SHOWN ON PLANS REFER TO DISTANCES FROM INSIDE FACES OF BOX BETWEEN THE WIDTHS AND LENGTHS.
- ALL STORM SEWER SHALL BE A MINIMUM OF CLASS III REINFORCED CONCRETE PIPE. SPECIFIC SEGMENTS OF STORM SEWER SHALL BE REQUIRED TO BE CONSTRUCTED OF A MINIMUM OF 5000 PSI CONCRETE DUE TO EXCESSIVE VELOCITIES. REFER TO ADDITIONAL NOTES WITHIN CONSTRUCTION PLANS.
- SINCE ALL PIPE ENTRIES INTO THE BASE ARE VARIABLE, THE DIMENSIONS SHOWN ARE TYPICAL. ACTUAL DIMENSIONS AND QUANTITIES FOR CONCRETE AND REINFORCEMENT SHALL BE AS REQUIRED IN THE WORK. QUANTITIES INCLUDE VOLUMES OCCUPIED BY PIPES.
- STEPS SHALL BE REQUIRED WHEN THE MANHOLE DEPTH EXCEEDS 3'-6" AND SHALL BE IN ACCORDANCE WITH AASHTO M 199.
- ALL REINFORCING STEEL SHALL HAVE A MINIMUM YIELD STRENGTH OF 60,000 PSI. VERTICAL STEEL SHALL BE PLACED AT $\frac{1}{4}$ OF WALL. ALL BARS SHALL HAVE A 2" MINIMUM CLEARANCE.
- FLOW CHANNELS AND INVERTS SHALL BE FORMED BY SHAPING WITH CLASS B CONCRETE OR APPROVED GROUT.
- CHECK WITH THE LOCAL GOVERNMENT AUTHORITY FOR ANY ADDITIONAL STORM SEWER SPECIFICATIONS, DETAILS, OR REGULATIONS.
- THE CONTRACTOR SHALL PROVIDE SHOP DRAWINGS OF ALL PREFABRICATED STRUCTURES TO THE ENGINEER FOR REVIEW PRIOR TO INSTALLATION.

STRUCTURAL CONCRETE NOTES:

- ALL CONSTRUCTION INVOLVING THE PLACEMENT OF STRUCTURAL CONCRETE SHALL BE COMPLETED IN ACCORDANCE WITH STANDARD SPECIFICATIONS, AND AS SUPPLEMENTED BY THE COLORADO DEPARTMENT OF TRANSPORTATION STANDARD SPECIFICATIONS FOR ROADWAY AND BRIDGE CONSTRUCTION.
- STEEL REINFORCING SHALL BE GRADE 60 FOR ALL REINFORCING STEEL GREATER THAN #4. SPLICING, LAP SPLICING SHALL BE MINIMUM IN THE FOLLOWING TABLE UNLESS OTHERWISE SPECIFIED:

BAR SIZE	#4	#5	#6	#7	#8
SPLICE LENGTH	1'-9"	2'-2"	2'-7"	3'-4"	4'-3"

 ALL REINFORCING SHALL HAVE A 2-INCH MINIMUM COVER UNLESS OTHERWISE SPECIFIED. ALL REINFORCED STEEL TO BE EPOXY COATED.
- CAST-IN-PLACE CONCRETE SHALL HAVE A MINIMUM COMPRESSIVE STRENGTH (f_c) OF 4,000 PSI AT 28 DAYS. ALL CONCRETE PLACED AGAINST SOIL SHALL BE TYPE II PORTLAND CEMENT. ALL EXPOSED CORNERS SHALL BE FORMED WITH A 3/4" CHAMFER UNLESS OTHERWISE SPECIFIED.
- EXPANSION JOINT MATERIAL SHALL MEET AASHTO SPECIFICATION M-213.
- BACKFILL AGAINST STRUCTURES SHALL NOT COMMENCE UNTIL ALL SUPPORTING DIAPHRAGMS ARE IN PLACE AND CONCRETE HAS OBTAINED ITS FULL SEVEN DAY STRENGTH. BACKFILL SHALL BE PLACED EQUALLY ON EACH SIDE OF RETAINING WALL STRUCTURES AND CUTOFF WALLS UNTIL THE FINAL GRADE IS REACHED.
- FOOTING EXCAVATIONS SHALL BE EXAMINED BY THE GEOTECHNICAL ENGINEER WITH A 24-HOUR MINIMUM NOTIFICATION FOR SOIL AND/OR CONCRETE TESTING. PLACEMENT OF CONCRETE IN THE ABSENCE OF TESTING SHALL BE COMPLETED AT THE SOLE RISK OF THE CONTRACTOR.
- PRIOR TO THE PLACEMENT OF CONCRETE IN AREAS WHERE SOIL IS PRESENT, THE SOIL SHALL BE SCARIFIED TO A MINIMUM DEPTH OF 6-INCHES. THE MOISTURE CONTENT SHALL BE ADJUSTED TO WITHIN PLUS OR MINUS 2 PERCENT OF THE OPTIMUM MOISTURE CONTENT AND RECOMPACTED TO AT LEAST 95 PERCENT RELATIVE COMPACTION (AASHTO-T-180).

ABBREVIATIONS
 EC -- EPOXY COATED O.F. -- OUTSIDE FACE E.F. -- EACH FACE E.W. -- EACH WAY I.F. -- INSIDE FACE N.F. -- NEAR FACE
 T.O.C. -- TOP OF CONCRETE B.O.C. -- BOTTOM OF CONCRETE CONT. -- CONTINUOUS

Include these pond/storm construction plans with the grading and erosion control plans as a standalone Grading and Erosion Control plan set.

Computer File Information		Sheet Revisions		Colorado Department of Transportation 4201 East Arkansas Avenue Denver, Colorado 80222 Phone: (303) 757-9823 Fax: (303) 757-9820	STANDARD PLAN NO. M-604-12 Sheet No. 1 of 2
Creation Date: 07/04/12	Initials: DD	Date:	Comments:		
Revision 1: 07/04/12	Initials: LTA				
Revision 2: 07/04/12	Initials: DD				
Revision 3: 07/04/12	Initials: DD				
Revision 4: 07/04/12	Initials: DD				
Revision 5: 07/04/12	Initials: DD				
Revision 6: 07/04/12	Initials: DD				
Revision 7: 07/04/12	Initials: DD				
Revision 8: 07/04/12	Initials: DD				
Revision 9: 07/04/12	Initials: DD				
Revision 10: 07/04/12	Initials: DD				

**NO DUMPING
DRAINS TO STREAM**

GENERAL NOTES:

- CONCRETE SHALL BE CLASS B INLET MAY BE CAST-IN-PLACE OR PRECAST.
- CONCRETE WALLS SHALL BE FORMED ON BOTH SIDES AND SHALL BE 8 IN. THICK.
- INLET STEPS SHALL BE IN CONFORMANCE WITH AASHTO M 199.
- CURB FACE ASSEMBLY SHALL BE GALVANIZED AFTER WELDING.
- EXPOSED CONCRETE CORNERS SHALL BE CHAMFERED 3/4" IN. CURB AND GUTTER CORNERS SHALL BE FINISHED TO MATCH THE EXISTING CURB AND GUTTER BEYOND THE TRANSITION GUTTER.
- REINFORCING BARS SHALL BE DEFORMED AND SHALL HAVE A 2 IN. MINIMUM CLEARANCE. ALL REINFORCING BARS SHALL BE EPOXY COATED.
- DIMENSIONS AND WEIGHTS OF TYPICAL MANHOLE RING AND COVER ARE NOMINAL.
- MATERIAL FOR MANHOLE RINGS AND COVERS SHALL BE GRAY OR DUCTILE CAST IRON IN ACCORDANCE WITH SUBSECTION 712.06.
- SINCE PIPE ENTRIES INTO THE INLET ARE VARIABLE, THE DIMENSIONS SHOWN ARE TYPICAL. ACTUAL DIMENSIONS AND QUANTITIES FOR CONCRETE AND REINFORCEMENT SHALL BE AS REQUIRED IN THE WORK. QUANTITIES INCLUDE VOLUMES OCCUPIED BY PIPES.
- STRUCTURAL STEEL SHALL BE GALVANIZED AND SHALL BE IN ACCORDANCE WITH SUBSECTION 712.06.
- ALL MANHOLE COVERS SHALL BE CAST WITH A "NO DUMPING DRAINS TO STREAM" MESSAGE AND A FISH SYMBOL. THE SURFACE OF THE MANHOLE COVER SHALL HAVE A NON-SLIP PATTERN.

TABLE ONE ~ BAR LIST FOR CURB INLETS, TYPE "R"

MARK	BAR OR SIZE	D.C. SPACING	TYPE	ALL INLETS				INLETS: H ≤ 5 FT.				INLETS: H > 5 FT.			
				NO. REQ'D.	LENGTH	NO. REQ'D.	LENGTH	NO. REQ'D.	LENGTH	NO. REQ'D.	LENGTH	NO. REQ'D.	LENGTH	NO. REQ'D.	LENGTH
401	4	11"	II	15	21	21	28	7	11	7	11	7	11	7	11
402	4	11"	II	7	9	9	13	3	4	3	4	3	4	3	4
403	4	9"	II	7	9	9	13	3	4	3	4	3	4	3	4
404	4	9"	II	7	9	9	13	3	4	3	4	3	4	3	4
405	4	6"	VI	11	8'-10"	21	8'-10"	31	8'-10"	11	8'-10"	11	8'-10"	11	8'-10"
406	4	6"	VII	7	8'-10"	7	13'-10"	7	8'-10"	7	8'-10"	7	8'-10"	7	8'-10"
407	4	9"	II	7	9	9	13	3	4	3	4	3	4	3	4
408	4	12"	II	3	6'-10"	3	11'-10"	3	16'-0"	3	11'-10"	3	16'-0"	3	16'-0"
409	4	8"	II	6	5'-10"	6	10'-10"	6	15'-10"	6	10'-10"	6	15'-10"	6	15'-10"
410	4	11"	II	7	9	9	13	3	4	3	4	3	4	3	4
412	4	11"	II	7	9	9	13	3	4	3	4	3	4	3	4
413	4	9"	II	7	9	9	13	3	4	3	4	3	4	3	4
501	5	5/8"	IV	11	3'-4"	22	3'-4"	33	3'-4"	22	3'-4"	33	3'-4"	22	3'-4"
502	5	5/8"	III	11	3'-4"	22	3'-4"	33	3'-4"	22	3'-4"	33	3'-4"	22	3'-4"
503	5	5/8"	II	5	3'-6"	16	3'-6"	27	3'-6"	6	3'-6"	6	3'-6"	6	3'-6"
504	5	5/8"	IX	11	3'-4"	22	3'-4"	33	3'-4"	22	3'-4"	33	3'-4"	22	3'-4"
601	6	2 1/2"	V	2	8'-10"	2	8'-10"	2	8'-10"	2	8'-10"	4	8'-10"	4	8'-10"
8B.5	2	5'-10"	II	1	10'-10"	1	15'-10"	1	10'-10"	1	10'-10"	1	15'-10"	1	15'-10"

* VARIABLE REFER TO TABLE TWO.
 ■ INCLUDE #4, 18 IN. BARS (SEE CHANNEL LAYOUT).

TABLE TWO ~ BARS AND QUANTITIES VARIABLE WITH "H"

"H"	LENGTH		NO. REQ'D.		L = 5 FT.		L = 10 FT.		L = 15 FT.	
	REGULAR	DROP BOX	REGULAR	DROP BOX	CONC. CU. YDS.	STEEL LBS.	CONC. CU. YDS.	STEEL LBS.	CONC. CU. YDS.	STEEL LBS.
3'-0"	2'-8"	1'-8"	10	7	3.2	285	5.3	497	7.4	706
3'-6"	3'-2"	2'-2"	10	7	3.4	305	5.7	528	7.9	747
4'-0"	3'-6"	2'-6"	12	9	3.7	329	6.0	559	8.4	786
4'-6"	4'-0"	3'-2"	12	9	3.9	354	6.4	571	8.8	803
5'-0"	4'-6"	3'-8"	14	11	4.1	354	6.7	602	9.3	844
5'-6"	5'-0"	4'-2"	16	13	4.4	375	6.9	607	7.4	850
6'-0"	5'-6"	4'-8"	16	13	4.6	392	7.2	616	7.8	860
6'-6"	6'-2"	5'-4"	18	15	4.8	402	7.4	637	7.8	880
7'-0"	6'-8"	6'-0"	20	17	5.0	423	7.6	654	8.0	897
7'-6"	7'-2"	6'-6"	20	17	5.3	430	7.8	664	8.5	907
8'-0"	7'-8"	7'-2"	22	19	5.5	451	8.1	684	8.5	927
8'-6"	8'-2"	7'-8"	24	21	5.7	471	8.3	702	8.7	944
9'-0"	8'-8"	8'-4"	24	21	6.0	479	8.6	711	9.0	954
9'-6"	9'-2"	8'-8"	26	23	6.2	499	8.8	732	9.2	974
10'-0"	9'-8"	9'-4"	28	25	6.4	520	9.0	749	9.4	992
10'-6"	10'-2"	9'-8"	28	25	6.7	527	9.3	759	9.7	1001
11'-0"	10'-8"	9'-8"	30	27	6.9	547	9.5	779	9.9	1022

NOTES: FOR L = 5 FT., L = 10 FT., AND L = 15 FT.
 REGULAR INLETS: TOTAL QUANTITIES NEEDED ARE OUTSIDE THE HEAVY BLACK LINE.
 DROP BOX INLETS: TOTAL QUANTITIES NEEDED ARE INSIDE THE HEAVY BLACK LINE.
 STEEL WEIGHTS DO NOT INCLUDE STRUCTURAL STEEL CHANNEL.

TABLE TWO ~ BARS AND QUANTITIES VARIABLE WITH "H"

Computer File Information

Creation Date: 07/04/12	Initials: DD	Date:	Comments:
Revision 1: 07/04/12	Initials: LTA		
Revision 2: 07/04/12	Initials: DD		
Revision 3: 07/04/12	Initials: DD		
Revision 4: 07/04/12	Initials: DD		
Revision 5: 07/04/12	Initials: DD		
Revision 6: 07/04/12	Initials: DD		
Revision 7: 07/04/12	Initials: DD		
Revision 8: 07/04/12	Initials: DD		
Revision 9: 07/04/12	Initials: DD		
Revision 10: 07/04/12	Initials: DD		

Colorado Department of Transportation
 4201 East Arkansas Avenue
 Denver, Colorado 80222
 Phone: (303) 757-9823
 Fax: (303) 757-9820

Project Development Branch DD/LTA

STANDARD PLAN NO.
 M-604-12
Sheet No. 2 of 2

20 BOULDER CRESCENT, SUITE 110
 COLORADO SPRINGS, CO 80903
 PHONE: 719.555.4485

CIVIL CONSULTANTS, INC.

FOR AND ON BEHALF OF M&S CIVIL CONSULTANTS, INC.

REVISIONS:

NO.	DATE	BY	DESCRIPTION

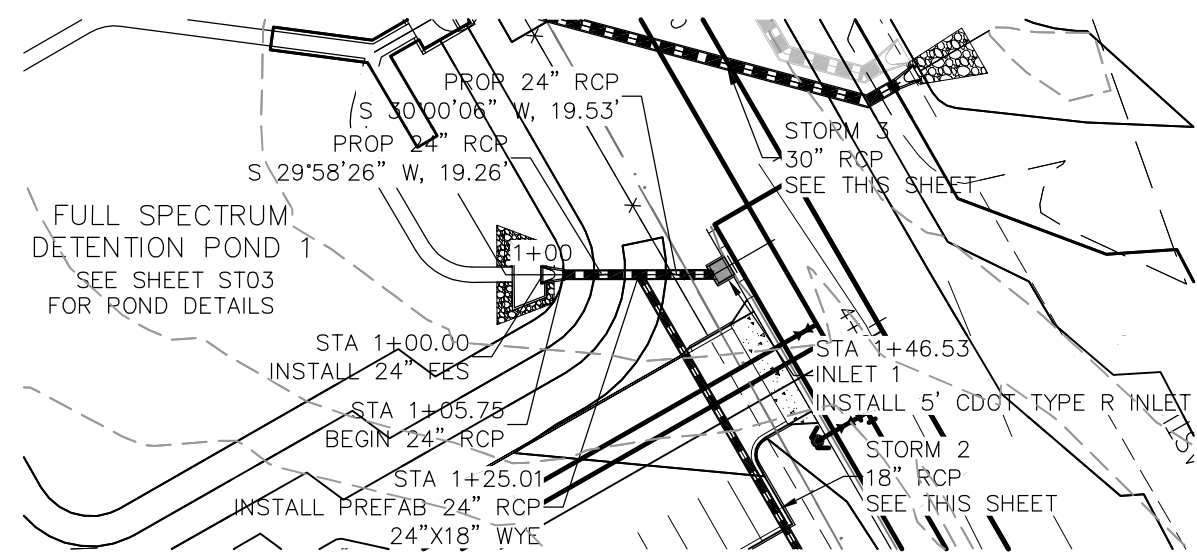
THE ENGINEER PREPARED THESE PLANS WILL NOT BE RESPONSIBLE FOR UNAUTHORIZED CHANGES TO OR USES OF THESE PLANS. ALL CHANGES TO THESE PLANS MUST BE IN WRITING AND MUST BE APPROVED BY THE PREPARER OF THESE PLANS.

CAUTION

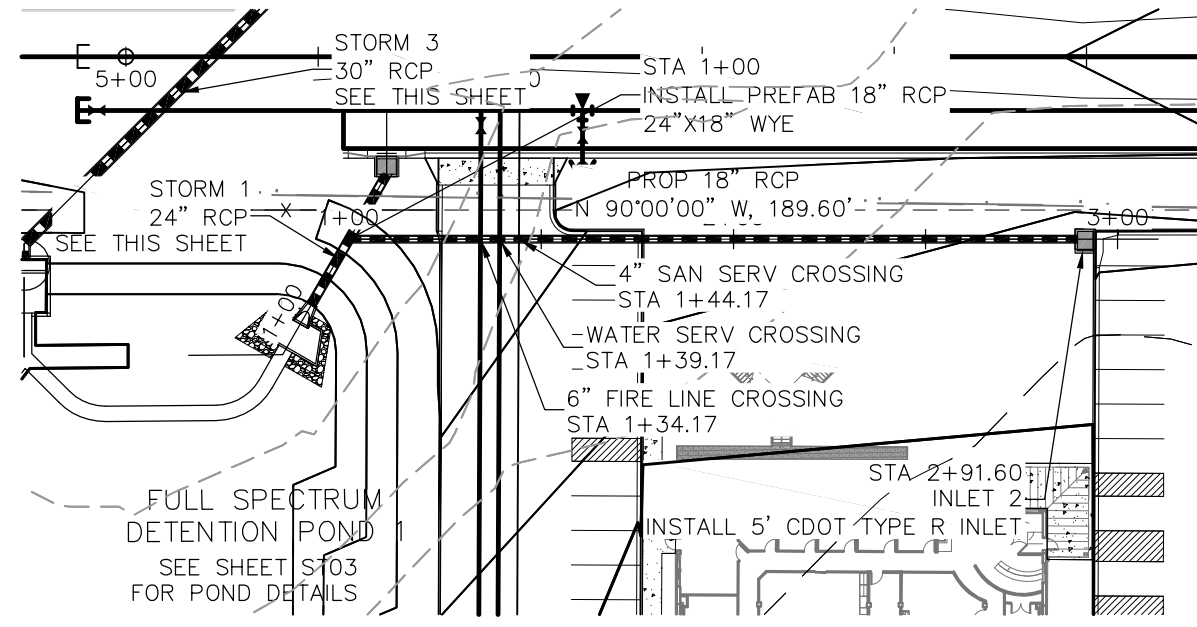


FOR LOCATING & MARKING GAS, ELECTRIC, WATER & TELEPHONE LINES

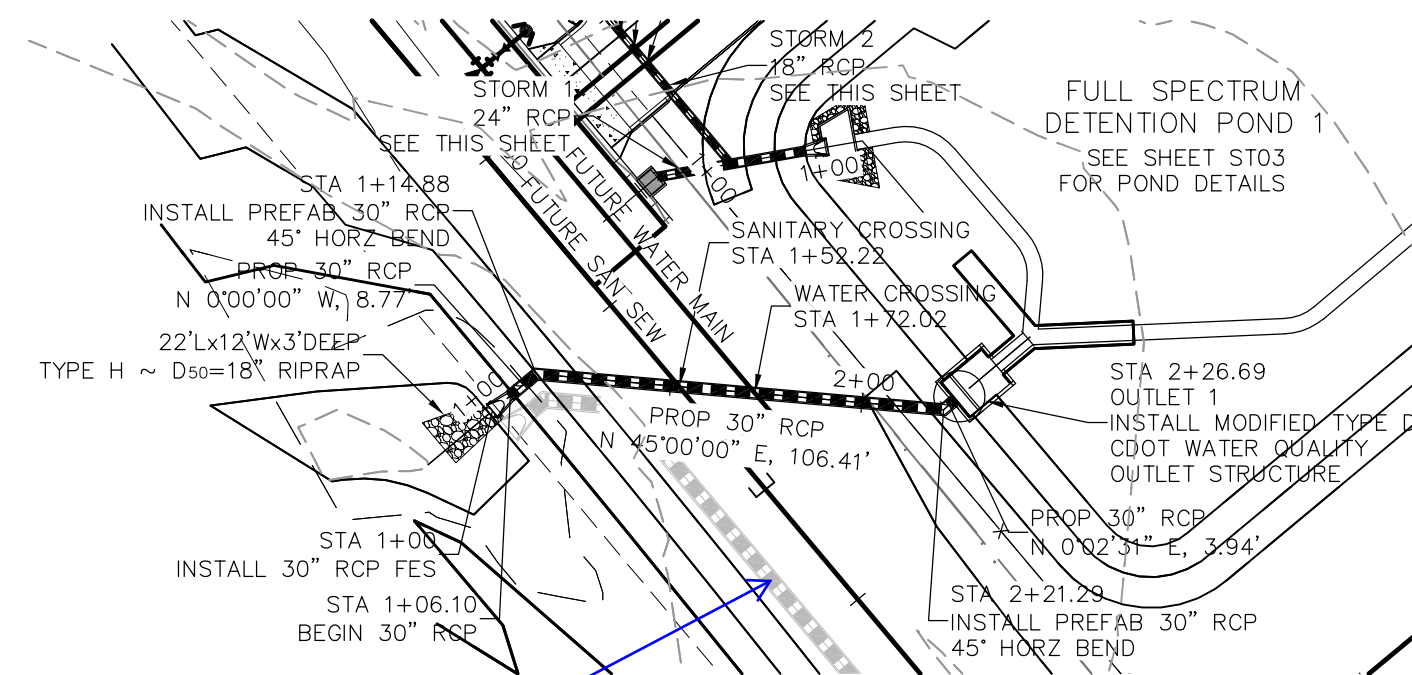
FOR BURIED UTILITY INFORMATION 48 HRS BEFORE YOU DIG CALL 1-800-922-1987



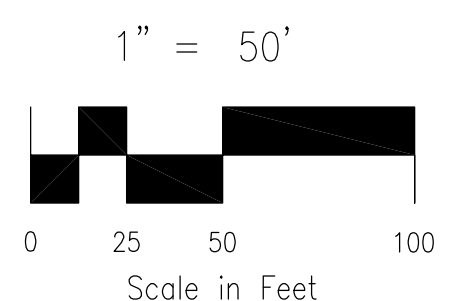
STORM 1
STA 1+00.00 TO STA 1+46.53



STORM 2
STA 1+00.00 TO STA 2+91.60



STORM 3
STA 1+00 TO STA 2+26.69



6550		6550		6550		6550		
6545		6545		6545		6545		
6540		6540		6540		6540		
6535		6535		6535		6535		
6530		6530		6530		6530		
6525		6525		6525		6525		
6520		6520		6520		6520		
6515		6515		6515		6515		
	<p>STORM 1 STA 1+00.00 TO STA 1+46.53 Label as "Private"</p>		<p>STORM 2 STA 1+00.00 TO STA 2+91.60 Label as "Private"</p>		<p>STORM 3 STA 1+00 TO STA 2+26.69 Label as "Private"</p>			
	1+00	2+00	1+00	2+00	3+00	1+00	2+00	3+00

TIMBERLINE STORAGE YARD
STORM SEWER PLANS

PROJECT NO. 43-095
DATE: 06/13/2017
SCALE: HORIZONTAL: 1"=50' VERTICAL: 1"=5'
DESIGNED BY: DLM
DRAWN BY: DLM
CHECKED BY: VAS

20 BOULDER CRESCENT, SUITE 110
COLORADO SPRINGS, CO 80903
PHONE: 719.555.4485

M&S CIVIL CONSULTANTS, INC.

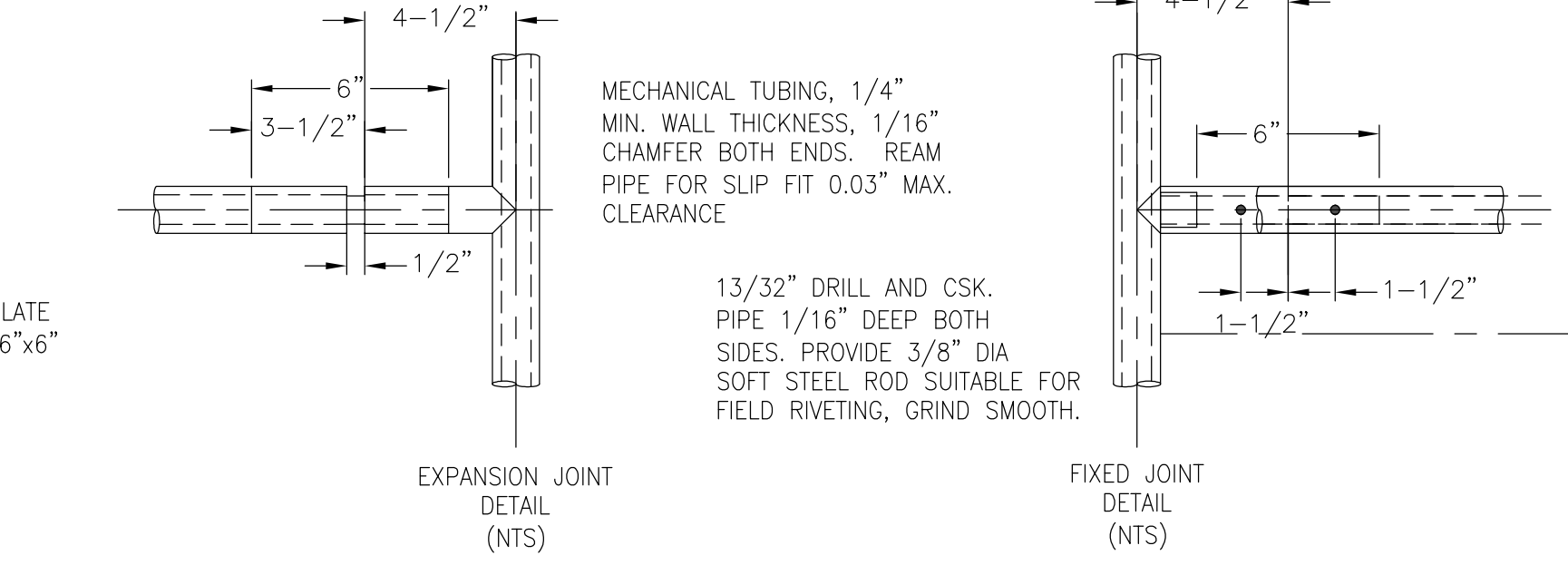
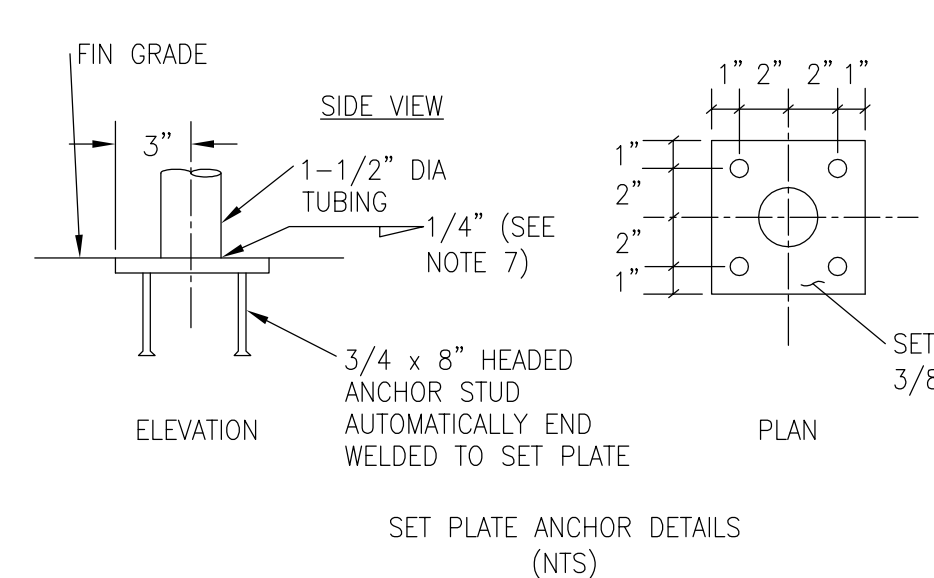
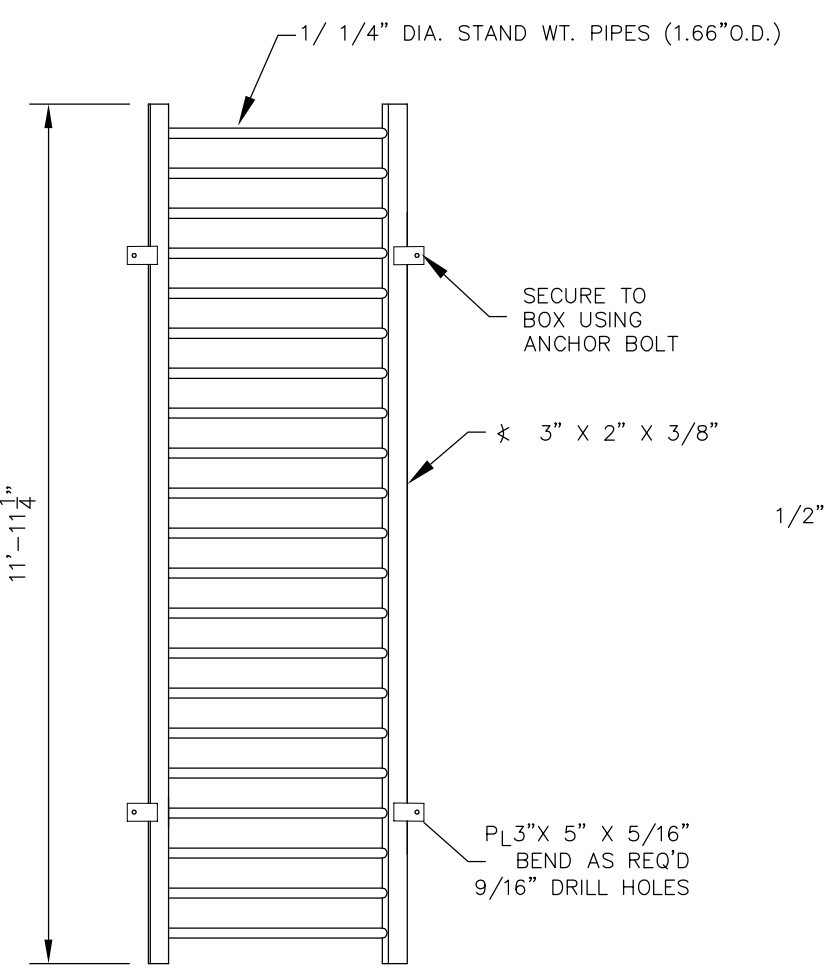
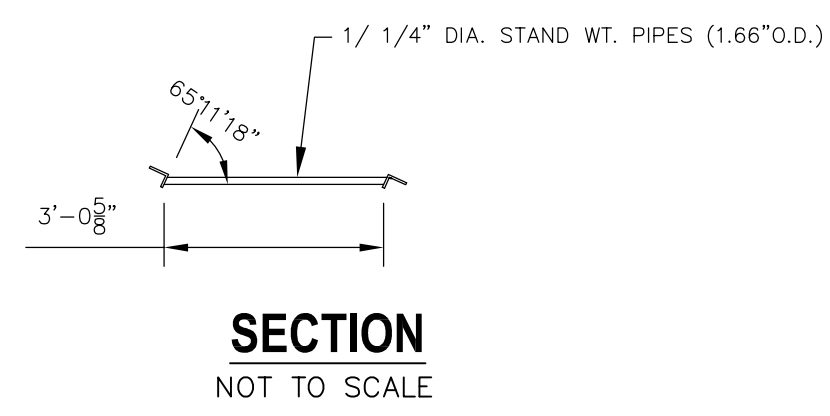
VIRGIL A. SANCHEZ, COLORADO P.E. NO. 37160

FOR AND ON BEHALF OF M&S CIVIL CONSULTANTS, INC.

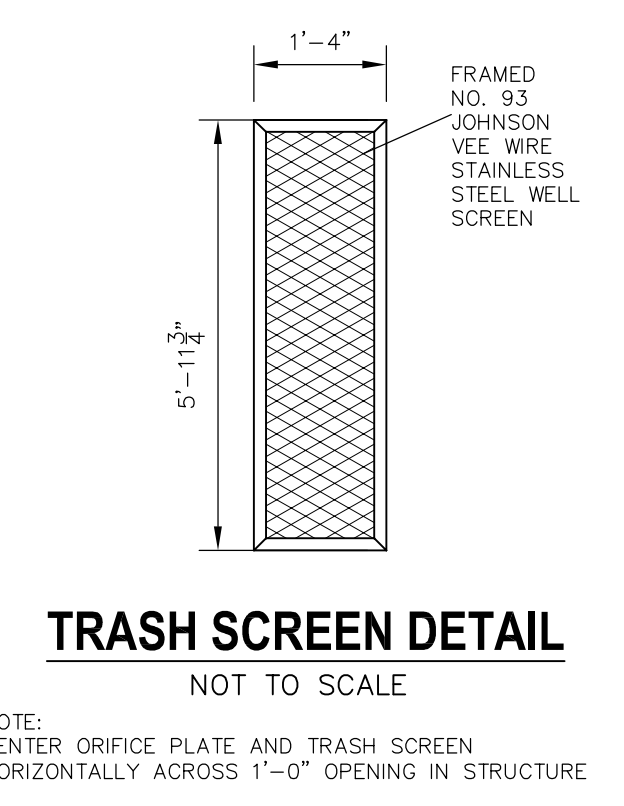
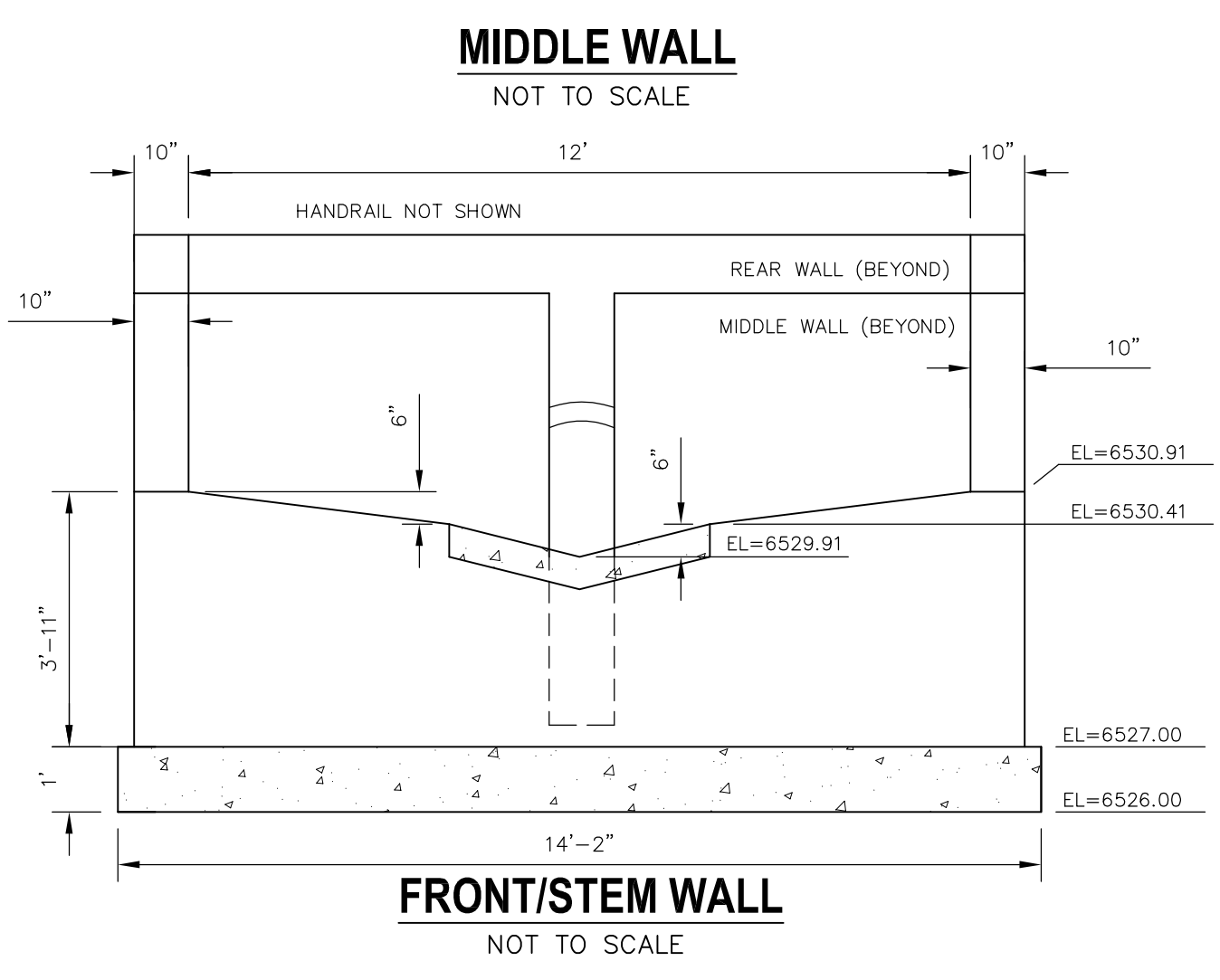
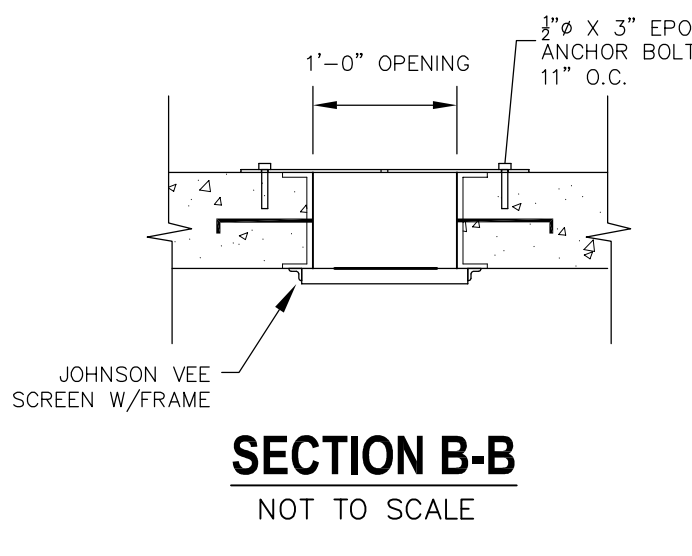
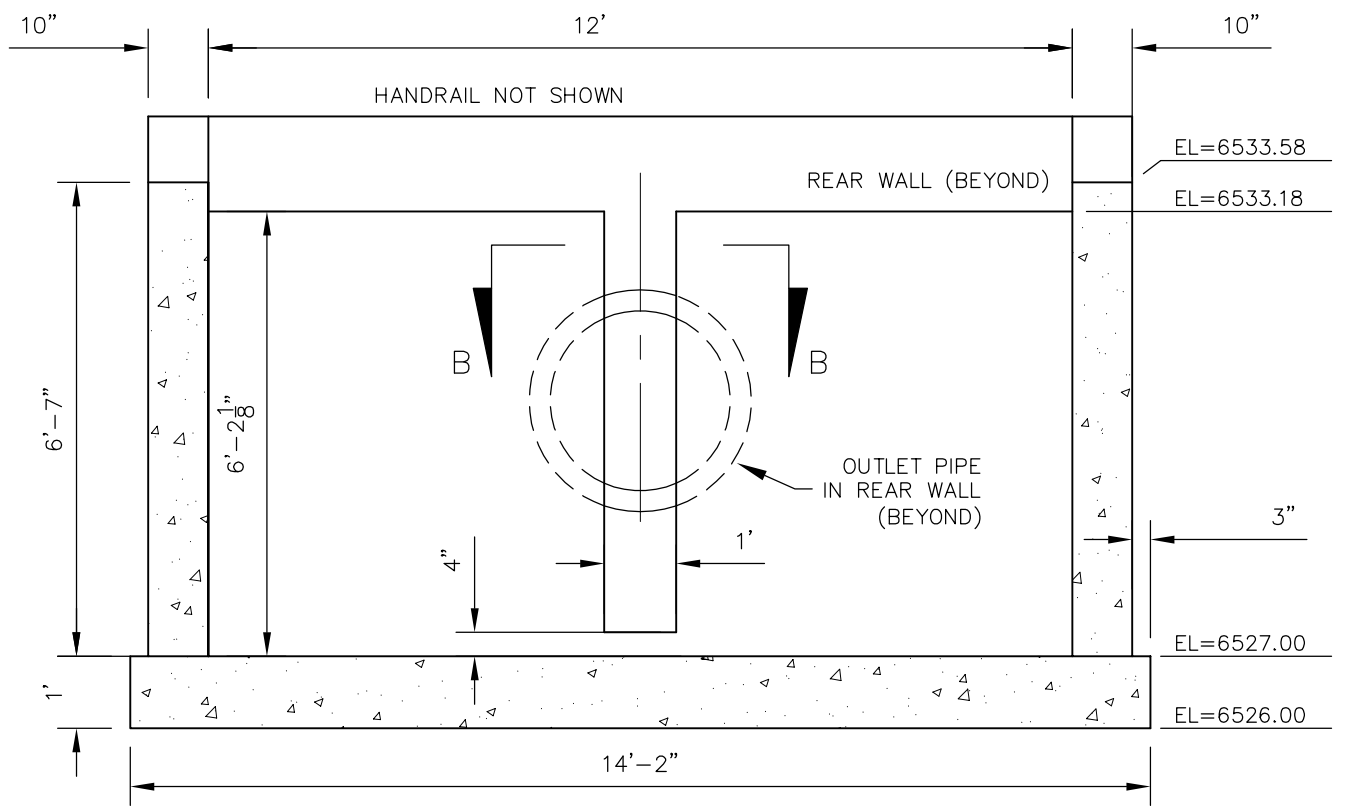
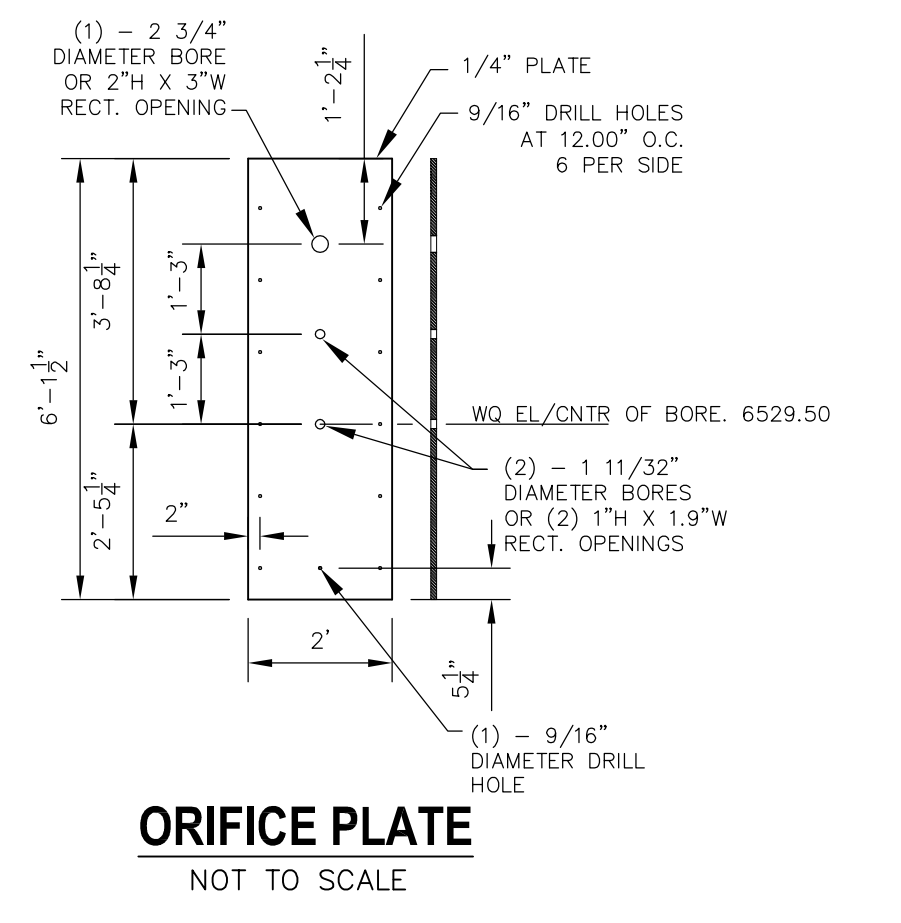
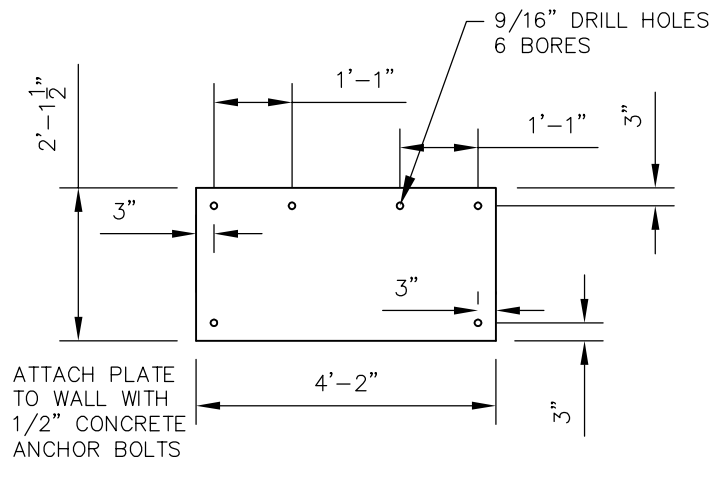
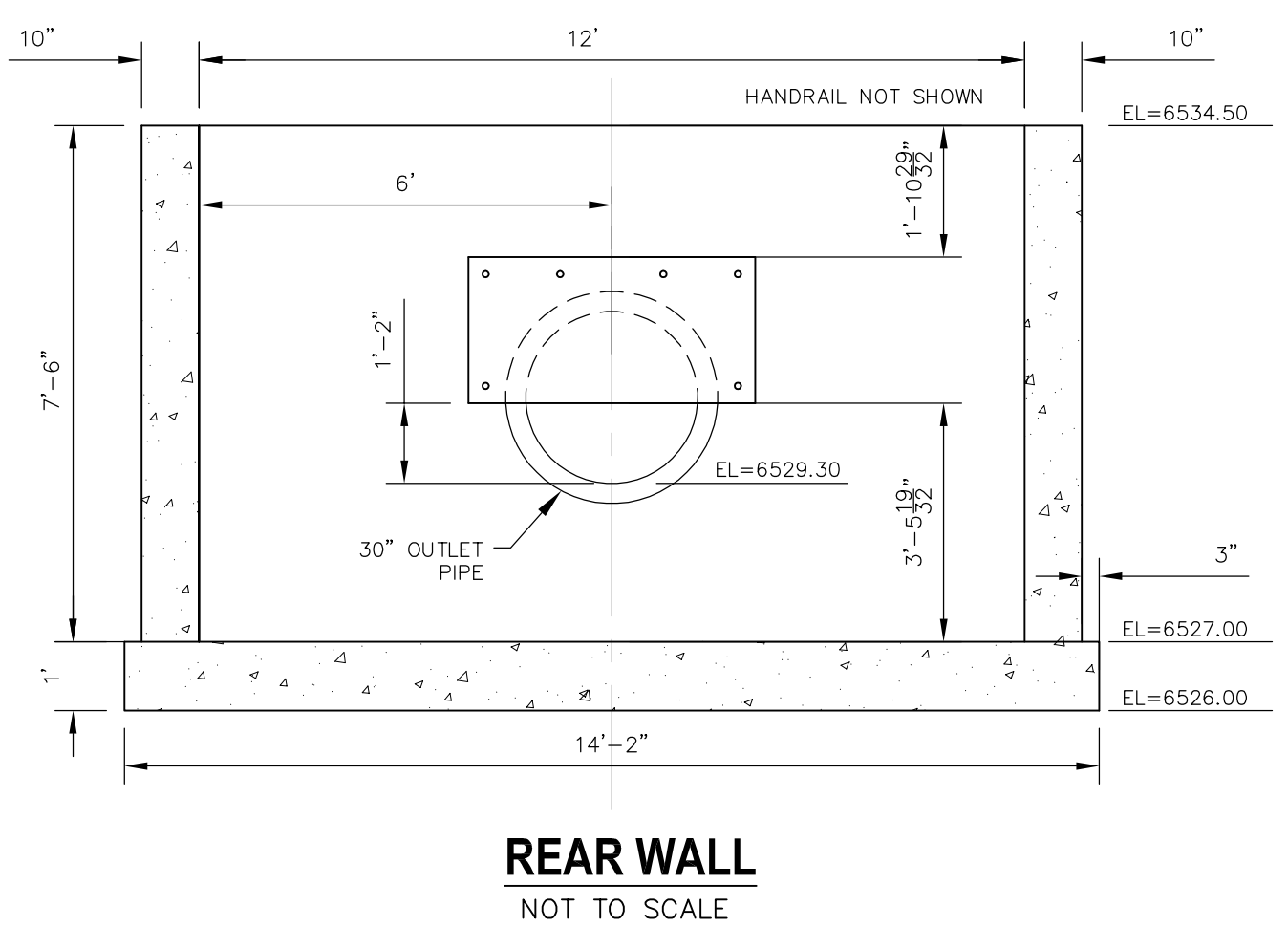
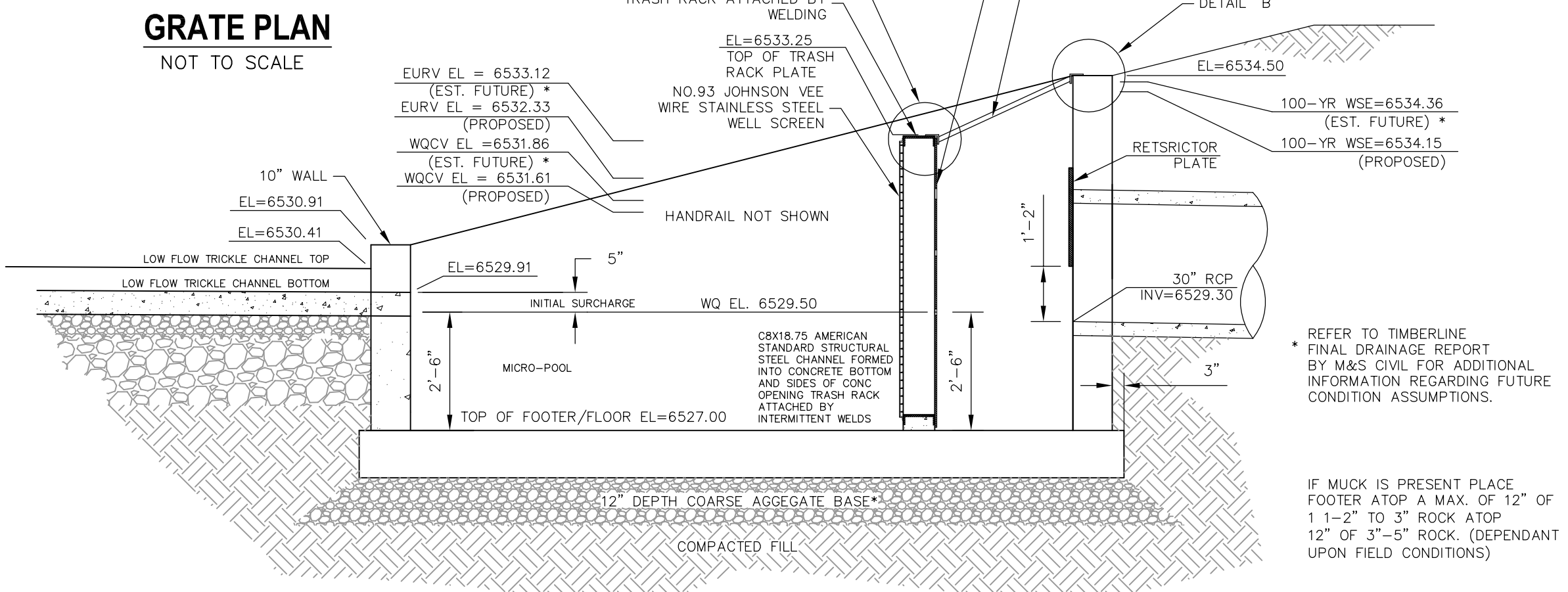
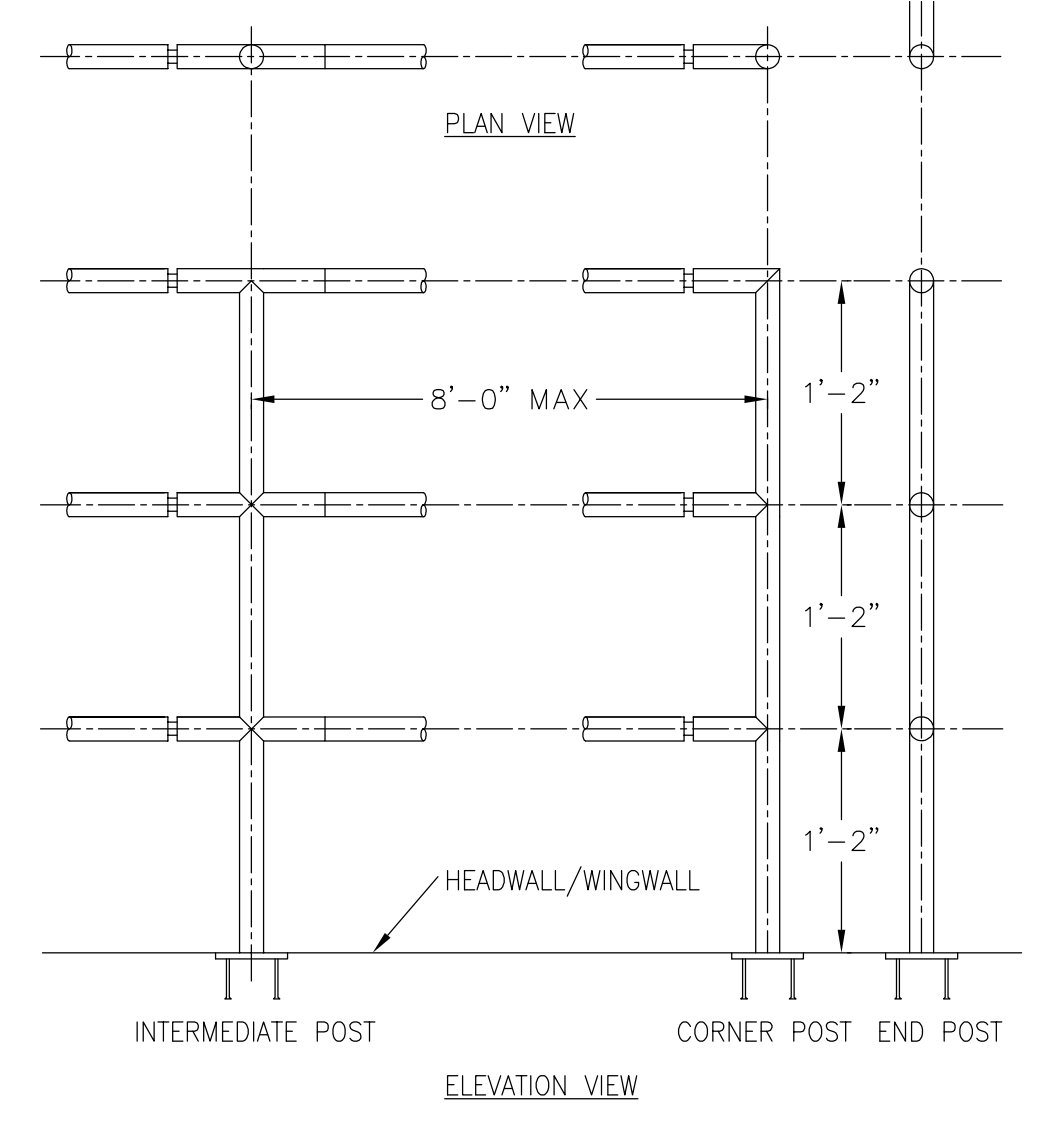
NO. DATE: BY: DESCRIPTION: APPROV. BY: DATE:

THE ENGINEER PREPARING THESE PLANS WILL NOT BE RESPONSIBLE OR LIABLE FOR UNAUTHORIZED CHANGES TO OR USES OF THESE PLANS. ALL CHANGES TO THE PLANS MUST BE IN WRITING AND MUST BE APPROVED BY THE PREPARER OF THESE PLANS.

CAUTION

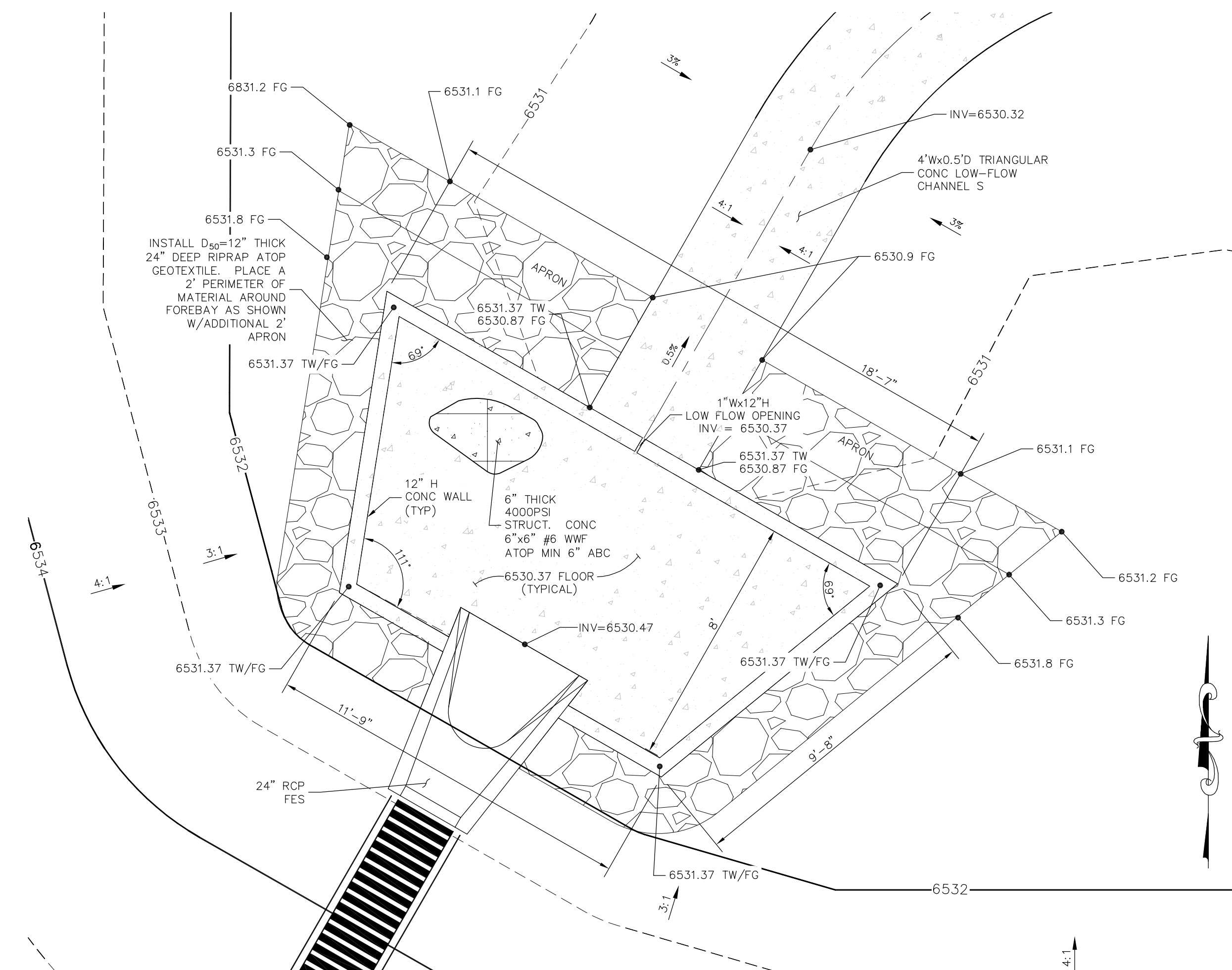


- 1) WELD PLATES MAY BE SUBSTITUTED FOR PIPE EMBEDMENT.
- 2) CONTRACTOR TO SUBMIT SHOP DRAWINGS TO ENGINEER OF RECORD FOR APPROVAL PRIOR TO FABRICATION.
- 3) DESIGN CRITERIA SHALL BE IN ACCORDANCE WITH AASHTO STANDARDS.
- 4) HANDRAIL DESIGN SHALL BE COMPATIBLE WITH THE DESIGN OF THE WINGWALLS AND HEADWALLS.
- 5) RAILING POSTS SHALL BE SET TO NORMAL TO GRADE. RAILS SHALL RUN PARALLEL TO THE SLOPES OF THE TOP OF WALLS.
- 6) ALL RAILS SHALL BE FREE OF ANY SHARP EDGES OR CORNERS.

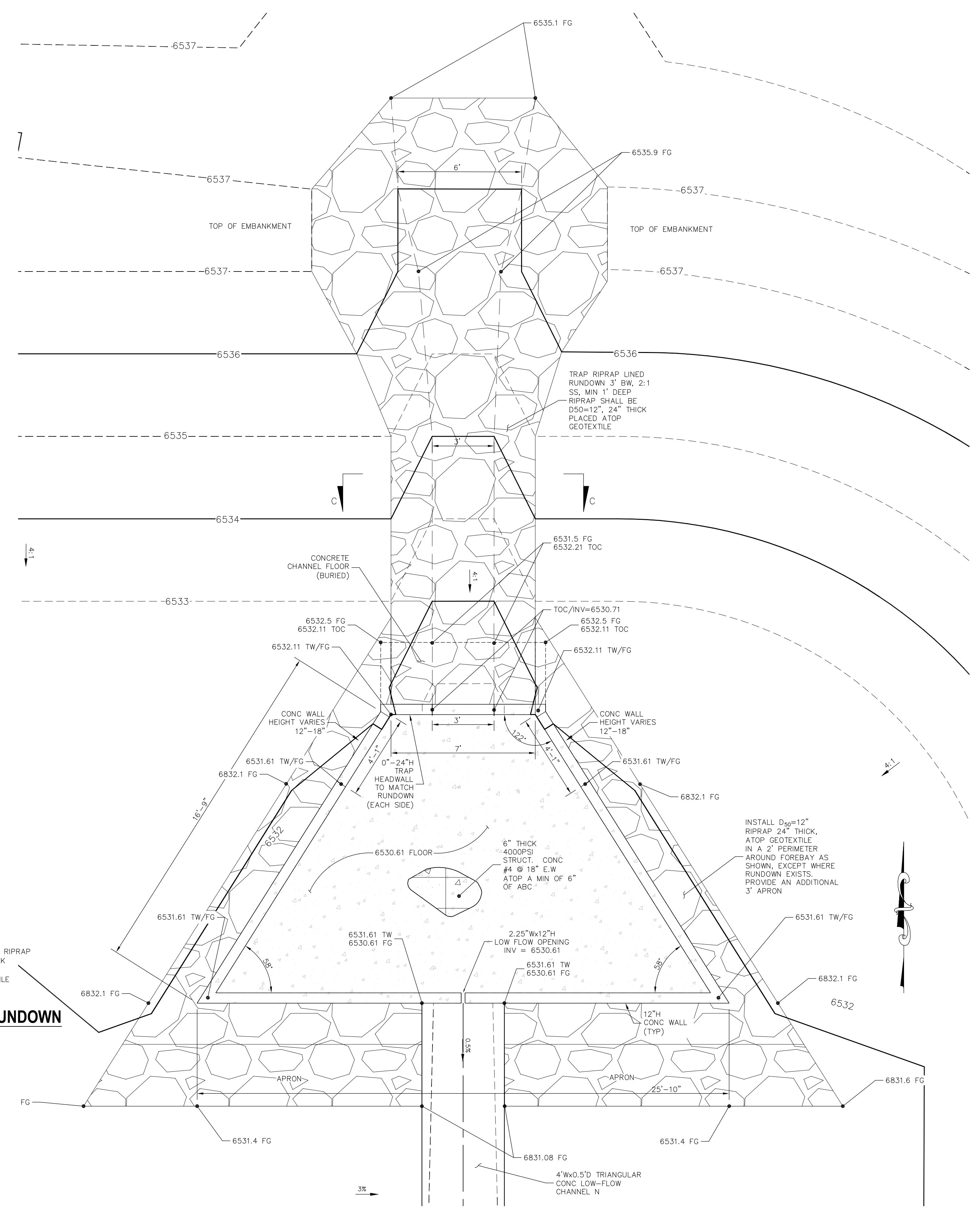


File: 0_43095A\Tim Emick\dwg\Const\DWG\ST04.dwg Plotstamp: 6/13/2017 5:23 PM

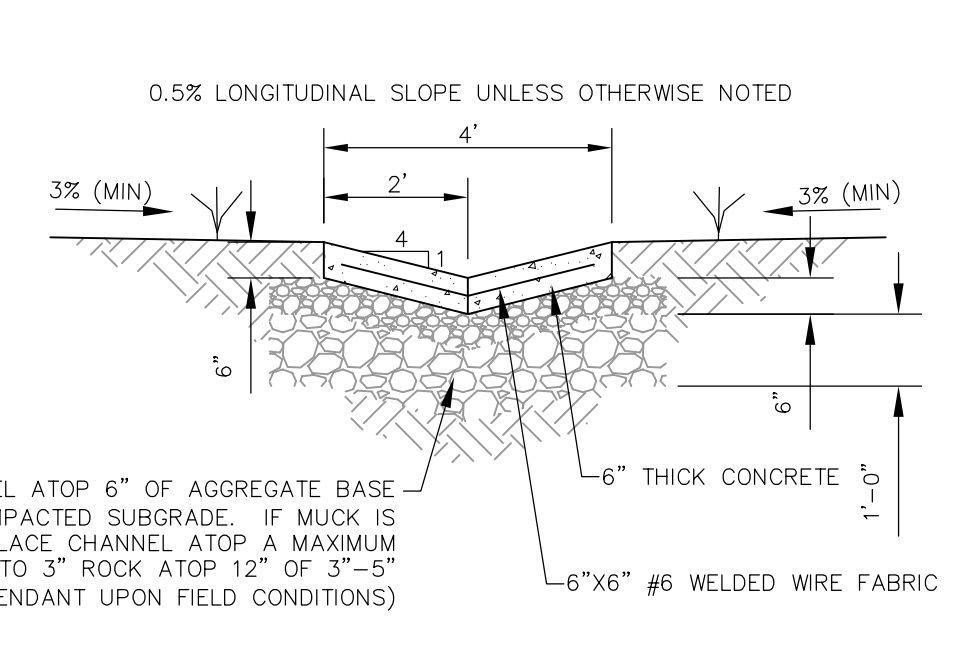
TIMBERLINE STORAGE YARD		FULL SPECTRUM DETENTION POND DETAILS	
PROJECT NO. 43-095	SCALE: HORIZONTAL: N/A VERTICAL: N/A	DATE: 6/13/2017	SHEET 7 OF 15 ST04
DESIGNED BY: ET	DRAWN BY: DIM	CHECKED BY: VAS	
20 BOULDER CRESCENT, SUITE 110 COLORADO SPRINGS, CO 80903 PHONE: 719.555.5485			
FOR AND ON BEHALF OF M&S CIVIL CONSULTANTS, INC.			
REVISIONS: NO. DATE: BY: DESCRIPTION:			
THE ENGINEER PREPARING THESE PLANS WILL NOT BE RESPONSIBLE OR LIABLE FOR UNAUTHORIZED CHANGES TO OR USES OF THESE PLANS. ALL CHANGES TO THE PLANS MUST BE IN WRITING AND MUST BE APPROVED BY THE PREPARER OF THESE PLANS.			
CAUTION			



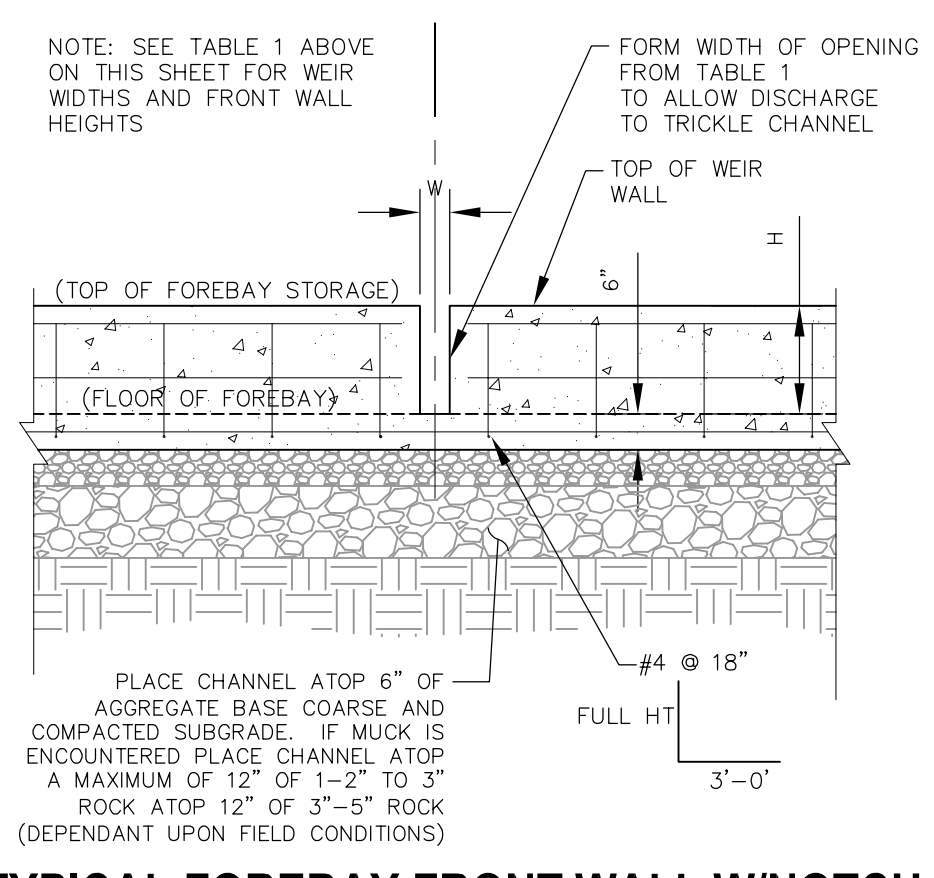
**FULL SPECTRUM DETENTION POND 1
 SOUTHWEST FOREBAY PLAN**
 NOT TO SCALE



**FULL SPECTRUM DETENTION POND 1
 NORTHEAST FOREBAY & RUNDOWN PLAN**
 NOT TO SCALE

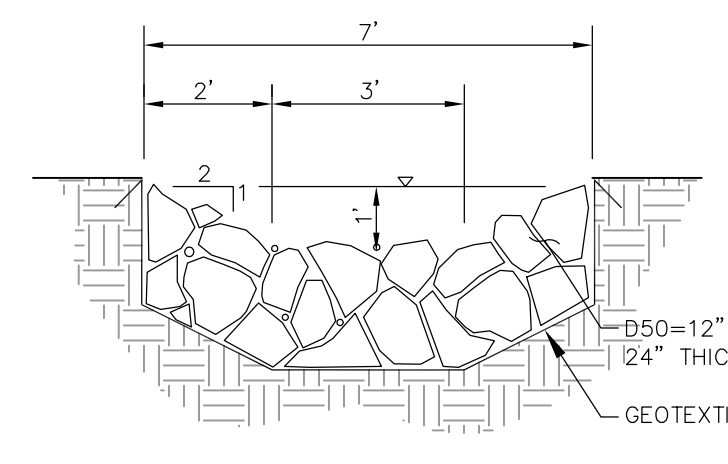


**LOW FLOW CHANNEL
 TYPICAL SECTION**
 NOT TO SCALE



TYPICAL FOREBAY FRONT WALL W/NOTCH
 NOT TO SCALE

TABLE 1		
FOREBAY	WIDTH (W)	HEIGHT (H)
N.E.	2.25'	12"
S.W.	1.00'	12"



SECTION C-C - NE FOREBAY RIPRAP RUNDOWN
 NOT TO SCALE

File: 0:\43095A\Tim Erick\dwg\Const\DWG\ST05.dwg Plotstamp: 6/13/2017 5:25 PM

 FOR LOCATING & MARKING GAS, ELECTRIC, WATER & TELEPHONE LINES
 FOR BURIED UTILITY INFORMATION
48 HRS BEFORE YOU DIG
 CALL 1-800-922-1987