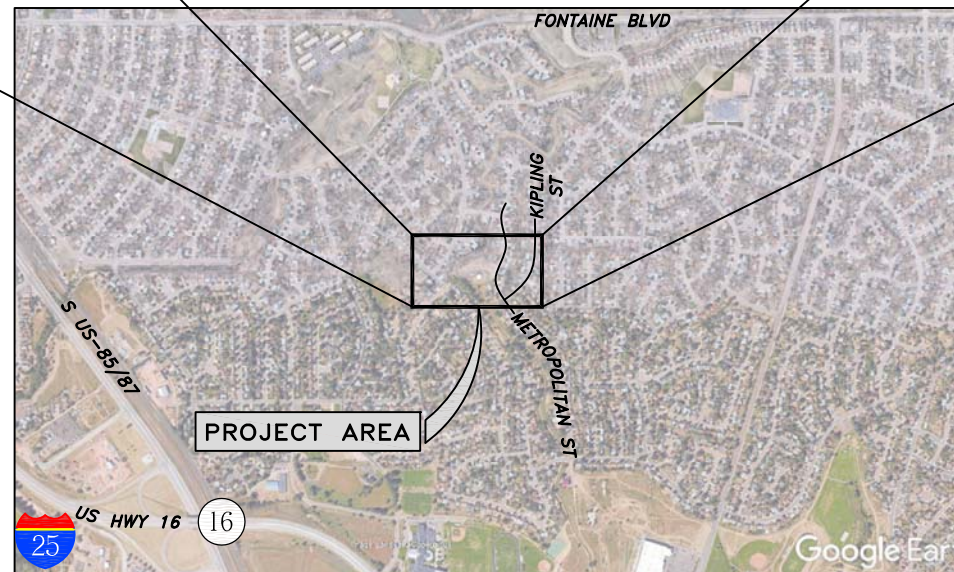
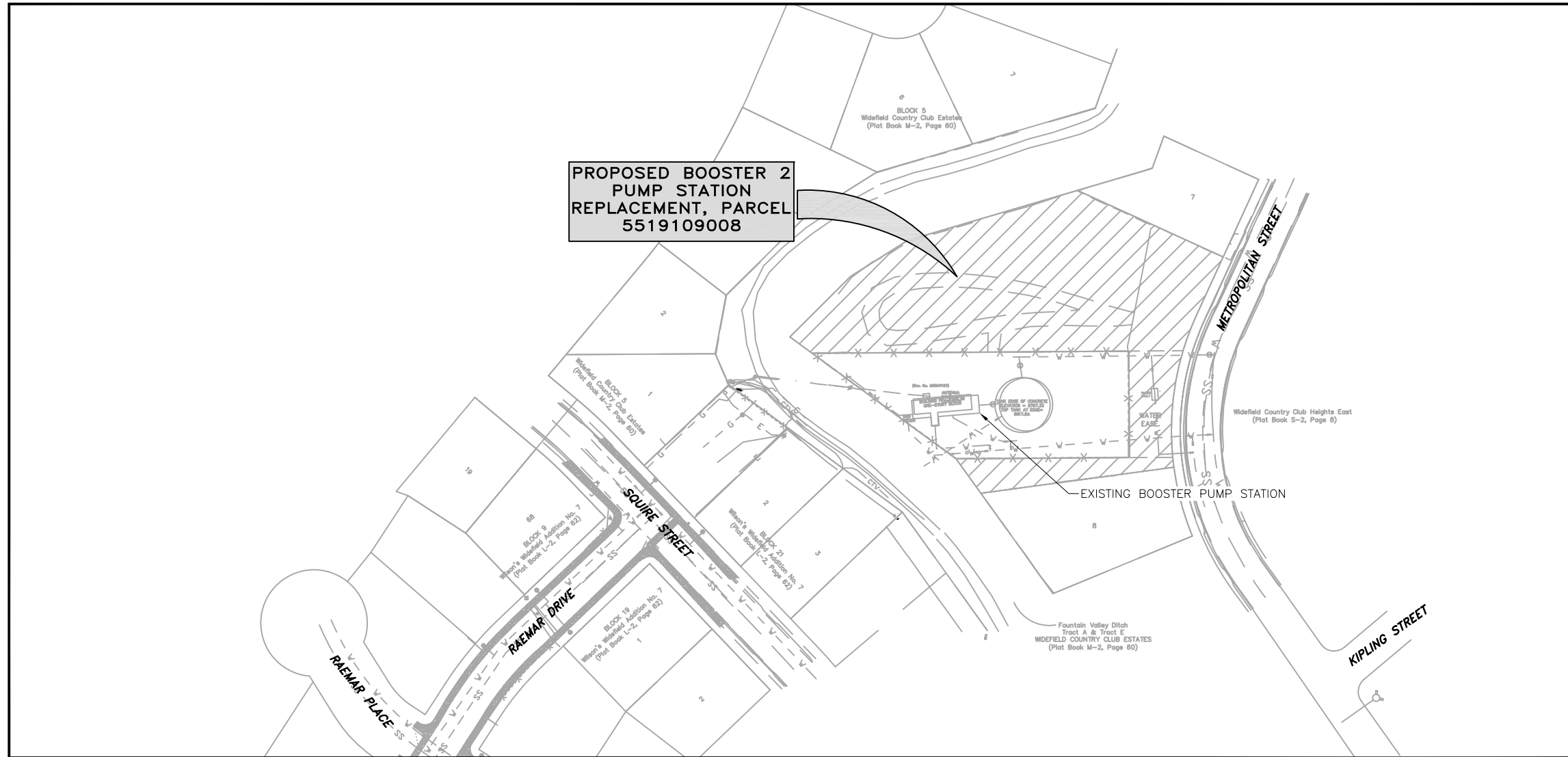


2022/02/09 1:46 PM By: Gina Mangino N:\Projects\102 Widefield Water And San\102.104 Booster 2 Pump Station\Drawings\Working\1\_General\102104\_M.dwg



**VICINITY MAP**  
N.T.S.

**JDS-HYDRO** CONSULTANTS, INC.  
5540 TECH CENTER DR., SUITE 100  
COLORADO SPRINGS, COLORADO 80919  
(719) 227-0072

DISCLAIMER: THE CONTRACTOR SHALL VERIFY ALL DIMENSIONS. ANY ERRORS OR OMISSIONS SHALL BE REPORTED TO JDS-HYDRO CONSULTANTS, INC. JDS-HYDRO ASSUMES NO LIABILITY FOR UNAUTHORIZED CHANGES AND/OR REVISIONS MADE TO PLANS.

**WIDEFIELD WATER AND SANITATION DISTRICT**  
**BOOSTER 2 PUMP STATION REPLACEMENT**  
**VICINITY MAP**

NO.	DESCRIPTION	BY	APP.	DATE
1				
2				
3				
4				
5				
6				
7				

**FOR REVIEW**

Project No.: 102.104  
Date: 02/09/22  
Design: MLD/GGM  
Drawn: SKG  
Check: MLD