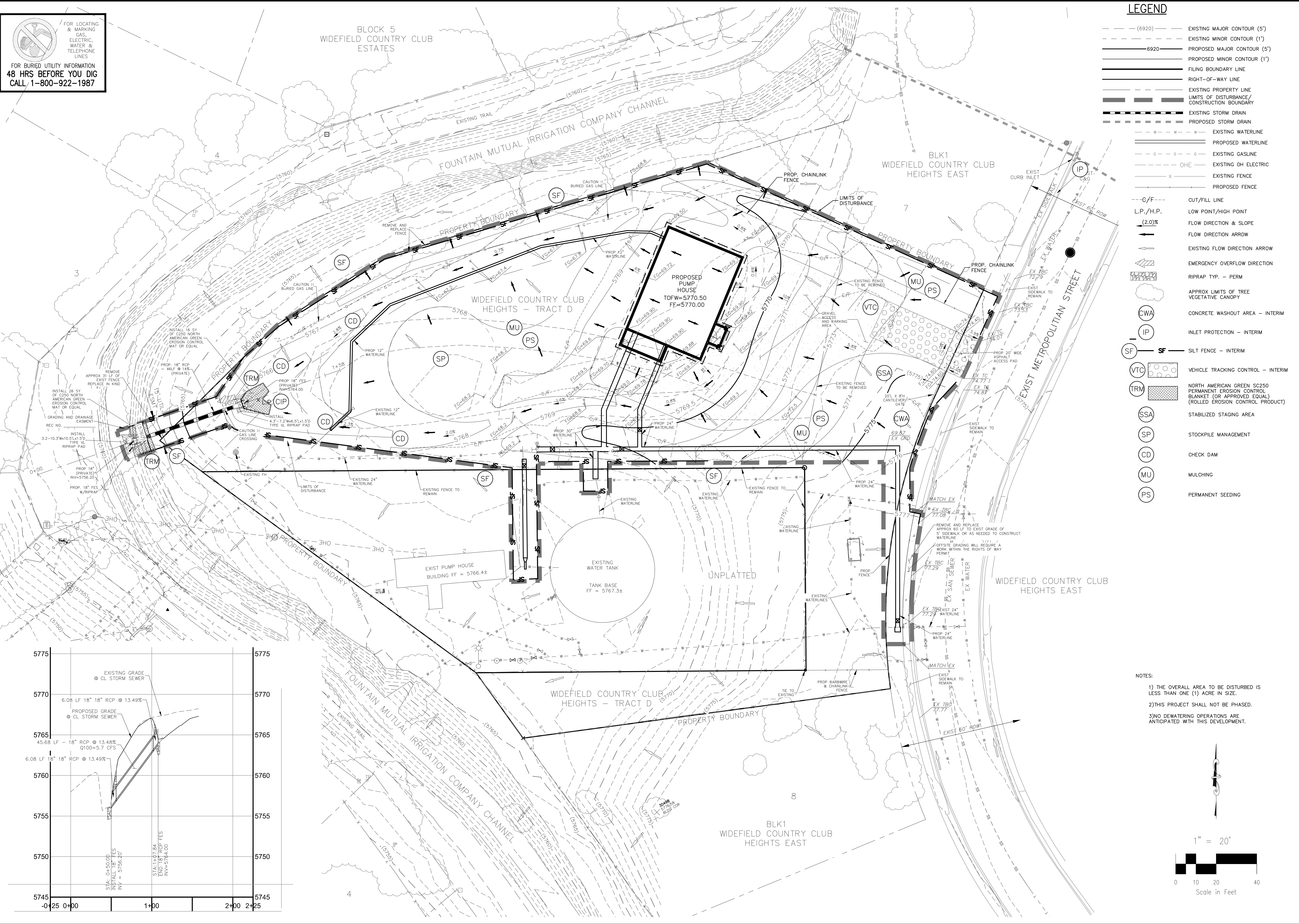


FOR LOCATING & MARKING GAS, ELECTRIC, WATER & TELEPHONE LINES

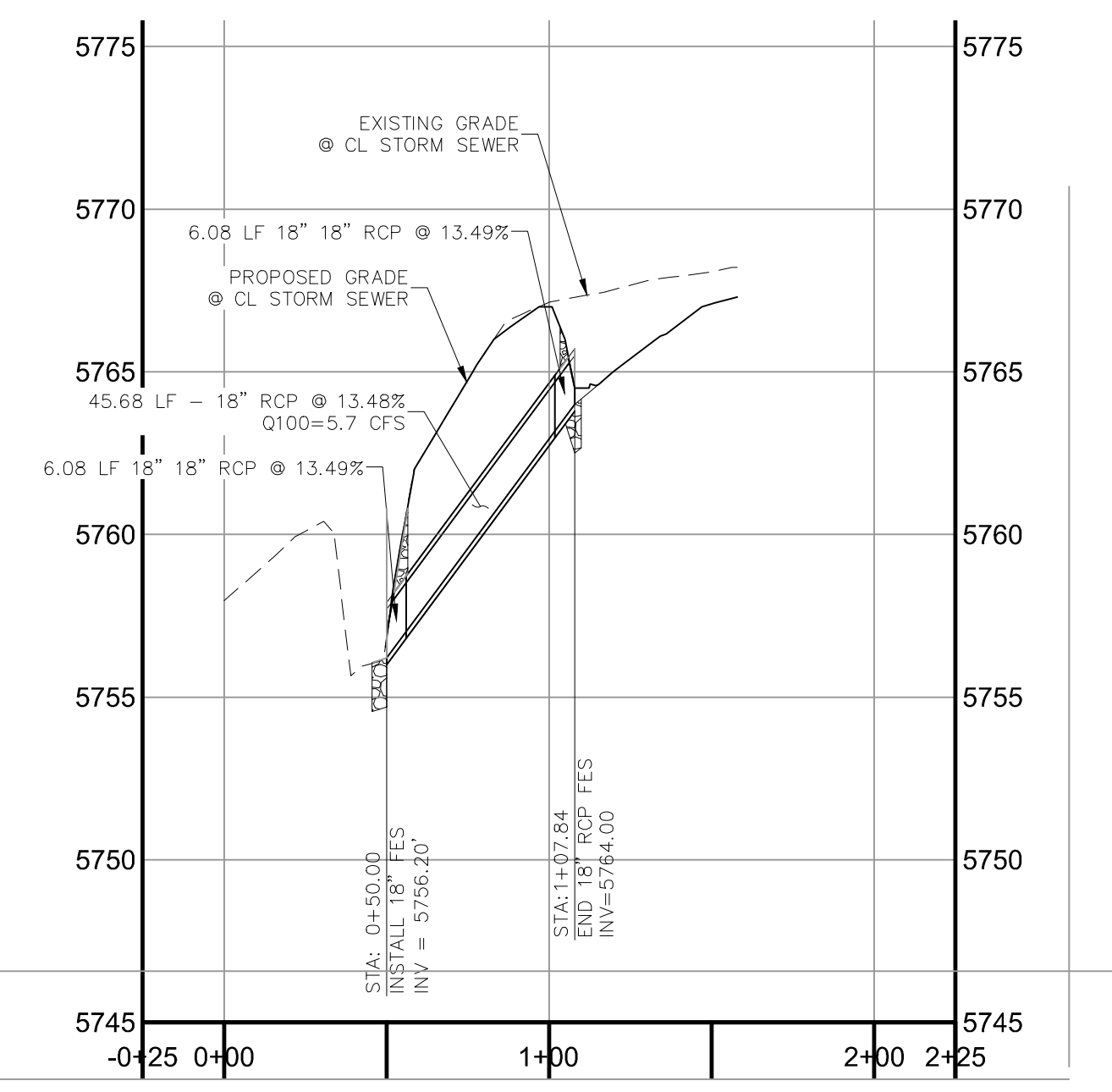
FOR BURIED UTILITY INFORMATION
48 HRS BEFORE YOU DIG
CALL 1-800-922-1987

BLOCK 5
WIDEFIELD COUNTRY CLUB
ESTATES

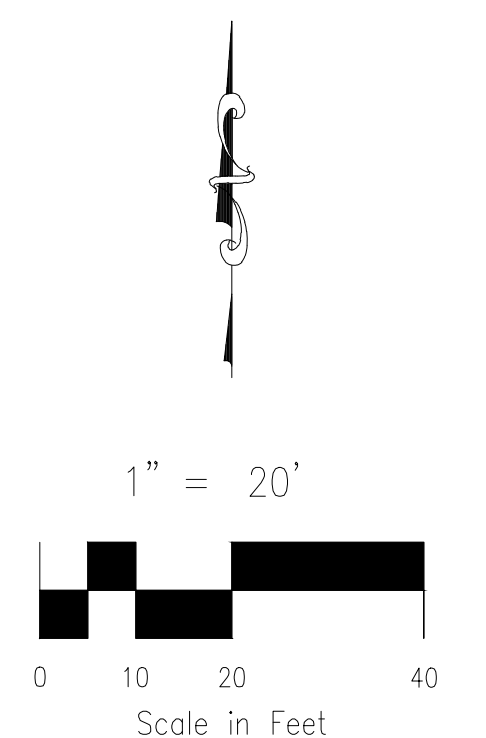


LEGEND

(---) (6920)	EXISTING MAJOR CONTOUR (5')
(---) (6920)	EXISTING MINOR CONTOUR (1')
(---) 6920	PROPOSED MAJOR CONTOUR (5')
(---) (6920)	PROPOSED MINOR CONTOUR (1')
(---)	FLING BOUNDARY LINE
(---)	RIGHT-OF-WAY LINE
(---)	EXISTING PROPERTY LINE
(---)	LIMITS OF DISTURBANCE/CONSTRUCTION BOUNDARY
(---)	EXISTING STORM DRAIN
(---)	PROPOSED STORM DRAIN
(---)	EXISTING WATERLINE
(---)	PROPOSED WATERLINE
(---)	EXISTING GASLINE
(---)	EXISTING OH ELECTRIC
(---)	EXISTING FENCE
(---)	PROPOSED FENCE
(---)	CUT/FILL LINE
(---)	LOW POINT/HIGH POINT
(---)	FLOW DIRECTION & SLOPE
(---)	FLOW DIRECTION ARROW
(---)	EXISTING FLOW DIRECTION ARROW
(---)	EMERGENCY OVERTFLOW DIRECTION
(---)	RIPRAP TYP. - PERM
(---)	APPROX LIMITS OF TREE VEGETATIVE CANOPY
(CWA)	CONCRETE WASHOUT AREA - INTERIM
(IP)	INLET PROTECTION - INTERIM
(SF)	SILT FENCE - INTERIM
(VTC)	VEHICLE TRACKING CONTROL - INTERIM
(TRM)	NORTH AMERICAN GREEN SC250 PERMANENT EROSION CONTROL BLANKET (OR APPROVED EQUAL) (ROLLED EROSION CONTROL PRODUCT)
(SSA)	STABILIZED STAGING AREA
(SP)	STOCKPILE MANAGEMENT
(CD)	CHECK DAM
(MU)	MULCHING
(PS)	PERMANENT SEEDING



- NOTES:
- 1) THE OVERALL AREA TO BE DISTURBED IS LESS THAN ONE (1) ACRE IN SIZE.
 - 2) THIS PROJECT SHALL NOT BE PHASED.
 - 3) NO DEWATERING OPERATIONS ARE ANTICIPATED WITH THIS DEVELOPMENT.



WWS BOOSTER 2 PUMP STATION

DETAILED GRADING / STORM SEWER PLAN

DATE: 03-23-2022

PROJECT NO. 70-077

SCALE: HORIZONTAL: 1"=20' VERTICAL: N/A

DESIGNED BY: DLM

DRAWN BY: DLM

CHECKED BY: VAS

SHEET 13 OF 61

C10

102 E. PINE PEAK AVE. 5TH FLOOR
COLORADO SPRINGS, CO 80903
PHONE: 719.555.4485

CIVIL CONSULTANTS, INC.

FOR AND ON BEHALF OF M&S CIVIL CONSULTANTS, INC.

REGISTERED PROFESSIONAL ENGINEER
NO. 38923
03-23-22

100% DESIGN DRAWINGS

NO.	DATE	DESCRIPTION	APPROVED BY	DATE

THE ENGINEER PREPARING THESE PLANS WILL NOT BE RESPONSIBLE OR LIABLE FOR UNAUTHORIZED CHANGES TO OR USES OF THESE PLANS. ALL CHANGES TO THE PLANS MUST BE IN WRITING AND MUST BE APPROVED BY THE PREPARER OF THESE PLANS.

CAUTION

File: C:\70077A_Widefield_M&S_Hydro\7010_metroplanning\street\dwg\C10.dwg Plotstamp: 4/6/2022 12:18 PM