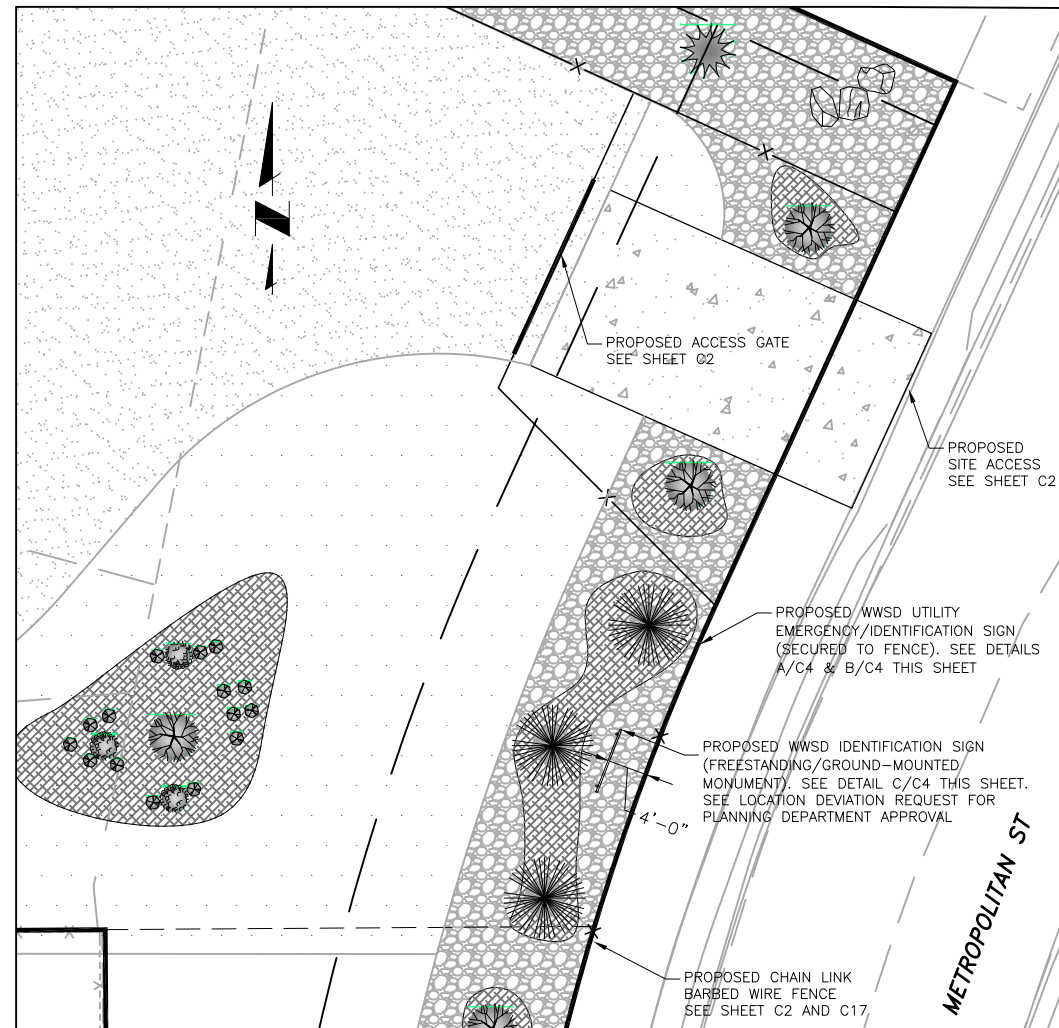
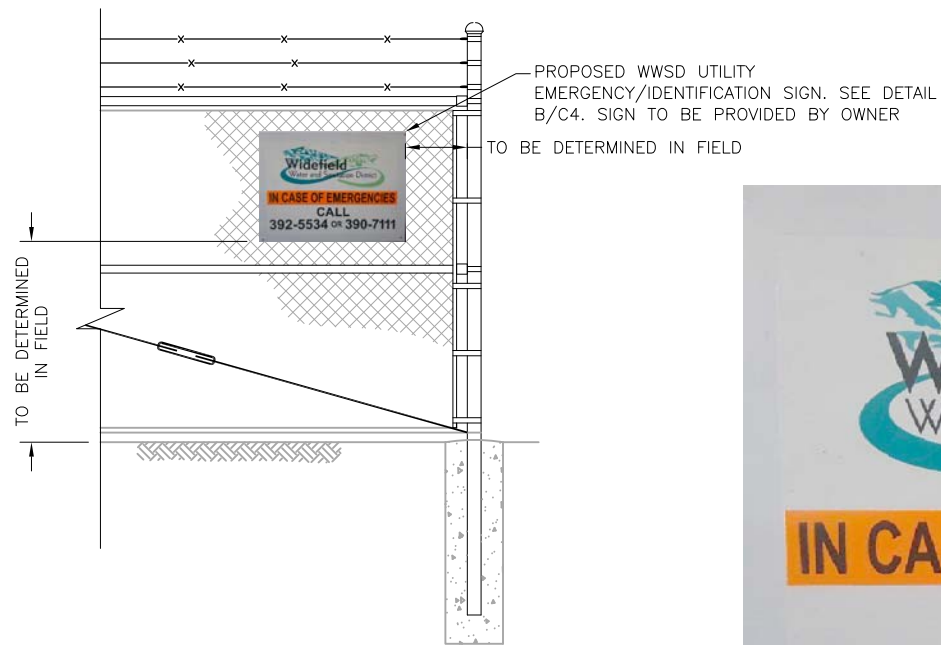


OVERALL LEGEND

—	EX PROPERTY LINE	⊗	EX FIRE HYDRANT
-x-	EX FENCE	⊗	EX WATER VALVE
-W-	EX WATER LINE	○	EX SANITARY SEWER MANHOLE
-SS-	EX SANITARY SEWER LINE	⊗	EX UTILITY POLE
-OHE-	EX O.H. ELECTRIC	— 5540 —	PP CONTOURS—MAJOR
-E-	EX U.G. ELECTRIC LINE	— — — — —	PP CONTOURS—MINOR
-GAS-	EX U.G. GAS LINE	— — — — —	PP WATER LINE ALIGNMENT
-T-	EX U.G. TELEPHONE LINE	⊗	PP WATER VALVE
-CTV-	EX U.G. CABLE LINE		
-5760-	EX CONTOURS—MAJOR		
-	EX CONTOURS—MINOR		



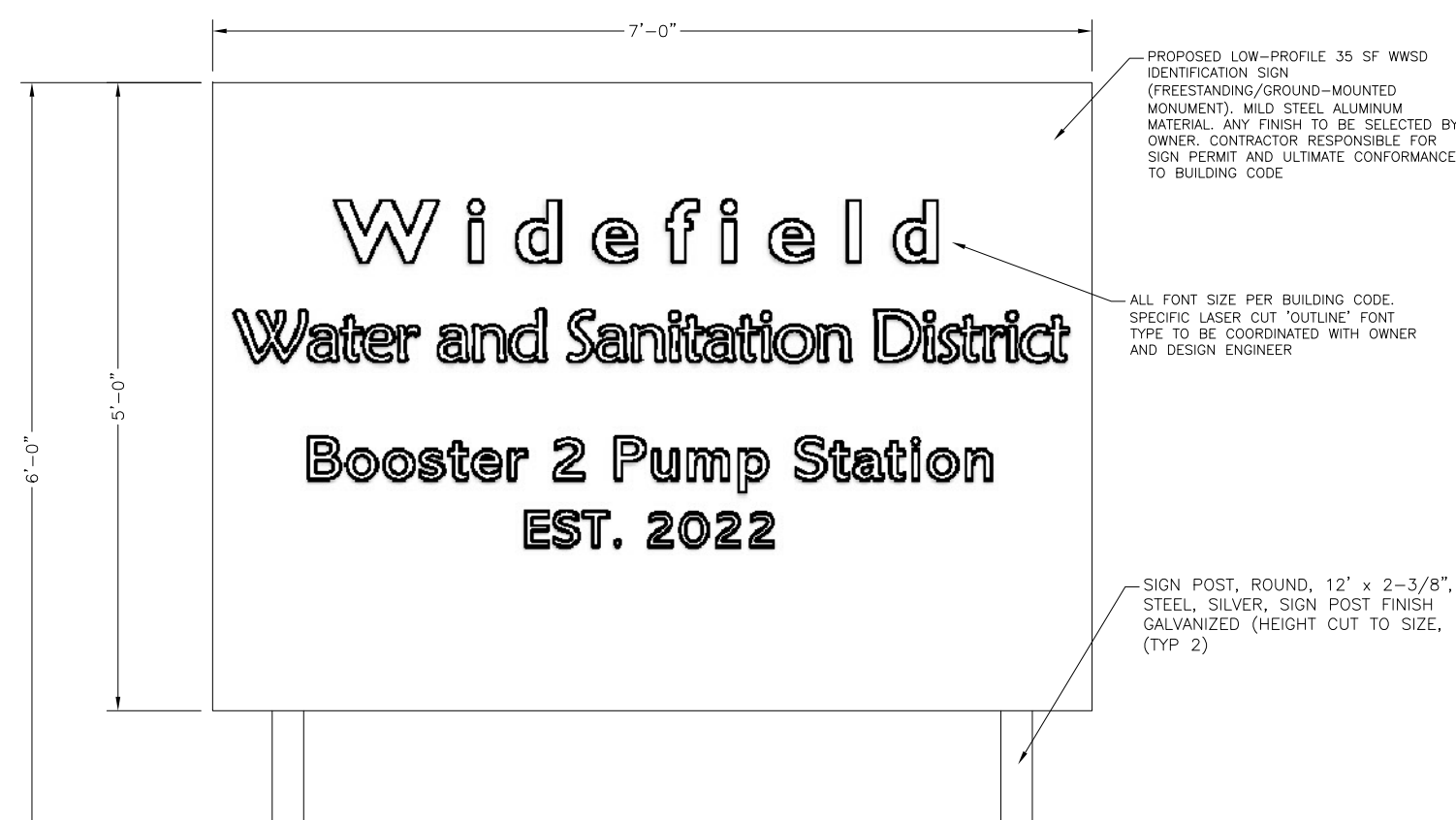
SIGNAGE PLAN
SCALE: 1"=20'



A
C4 **FENCE-MOUNTED IDENTIFICATION SIGN ELEVATION**
SCALE: N.T.S.



B
C4 **FENCE-MOUNTED IDENTIFICATION SIGN DETAIL**
SCALE: N.T.S.



C
C4 **FREESTANDING/GROUND-MOUNTED MONUMENT IDENTIFICATION SIGN ELEVATION**
SCALE: N.T.S.

NOTE:
DISTRICT IDENTIFICATION SIGNAGE TO BE INSTALLED PER PLANS. KNOXBOX INSTALLED ON GATE FOR FIRE DEPARTMENT ACCESS.

EPC PLANNING TO PROVIDE

PCD File No. PPR-21-

JDS-HYDRO CONSULTANTS, INC.
5540 TECH CENTER DR., SUITE 100
COLORADO SPRINGS, COLORADO 80919
(719) 227-0072
DISCLAIMER: THE CONTRACTOR SHALL VERIFY ALL DIMENSIONS. ANY ERRORS OR OMISSIONS SHALL BE REPORTED TO JDS-HYDRO CONSULTANTS, INC. JDS-HYDRO ASSUMES NO LIABILITY FOR UNAUTHORIZED CHANGES AND/OR REVISIONS MADE TO PLANS.

WIDEFIELD WATER AND SANITATION DISTRICT
BOOSTER 2 PUMP STATION REPLACEMENT
SIGNAGE PLAN

NO.	DESCRIPTION	BY	APP.	DATE
1				
2				
3				
4				
5				
6				
7				

FOR REVIEW



Project No.: 102.104
Date: 01/15/20
Design: GGM
Drawn: GGM
Check: MLD

C4
SHEET ---OF

2021/10/28 12:46 PM By: Gina Mangino J:\JDS-Hydro\Project Files\102 Widefield Water And San\102.104 Booster 2 Pump Station\Drawings\Working\2-Civil\102104-Civil.dwg