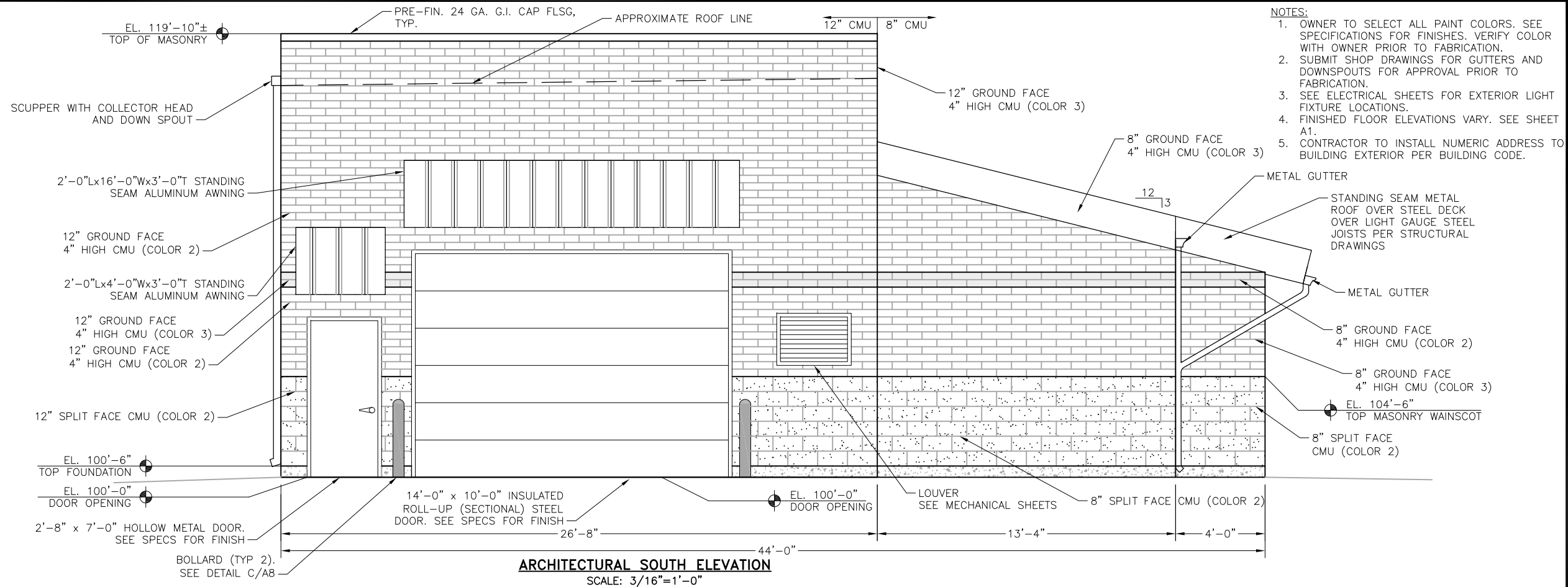


2021/10/28 1:56 PM By: Gina Mangino J:_JDS-Hydro\Project Files\102 Widefield Water And San\102.104 Booster 2 Pump Station\Drawings\Working\6_Architectural\102.104_Arch.dwg



- NOTES:**
1. OWNER TO SELECT ALL PAINT COLORS. SEE SPECIFICATIONS FOR FINISHES. VERIFY COLOR WITH OWNER PRIOR TO FABRICATION.
 2. SUBMIT SHOP DRAWINGS FOR GUTTERS AND DOWNSPOUTS FOR APPROVAL PRIOR TO FABRICATION.
 3. SEE ELECTRICAL SHEETS FOR EXTERIOR LIGHT FIXTURE LOCATIONS.
 4. FINISHED FLOOR ELEVATIONS VARY. SEE SHEET A1.
 5. CONTRACTOR TO INSTALL NUMERIC ADDRESS TO BUILDING EXTERIOR PER BUILDING CODE.

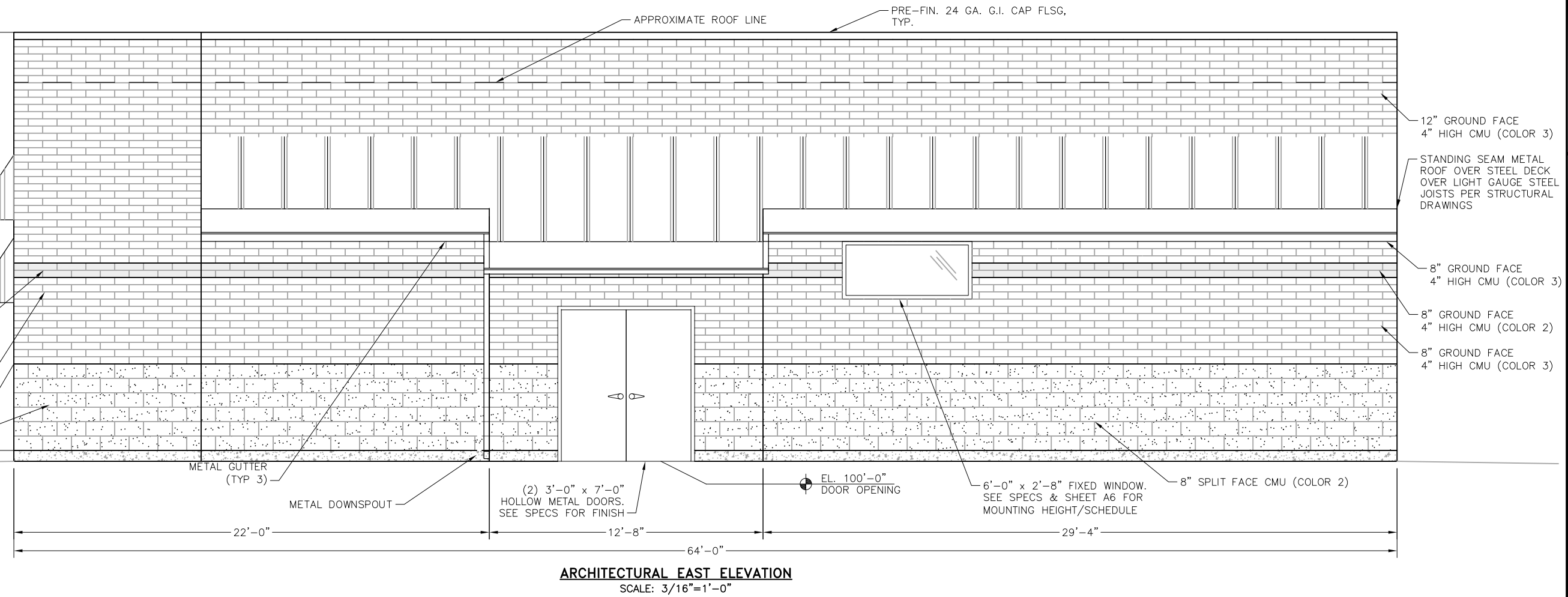
JDS-HYDRO CONSULTANTS, INC.
5640 TECH CENTER DR., SUITE 100
COLORADO SPRINGS, COLORADO 80919
(719) 227-0072

DISCLAIMER: THE CONTRACTOR SHALL VERIFY ALL DIMENSIONS. ANY ERRORS OR OMISSIONS SHALL BE REPORTED TO JDS-HYDRO CONSULTANTS, INC. JDS-HYDRO ASSUMES NO LIABILITY FOR UNAUTHORIZED CHANGES AND/OR REVISIONS MADE TO PLANS.

WIDEFIELD WATER AND SANITATION DISTRICT
BOOSTER 2 PUMP STATION REPLACEMENT
ARCHITECTURAL ELEVATIONS
SOUTH AND EAST

NO.	DESCRIPTION	BY	APP.	DATE
1				
2				
3				
4				
5				
6				
7				

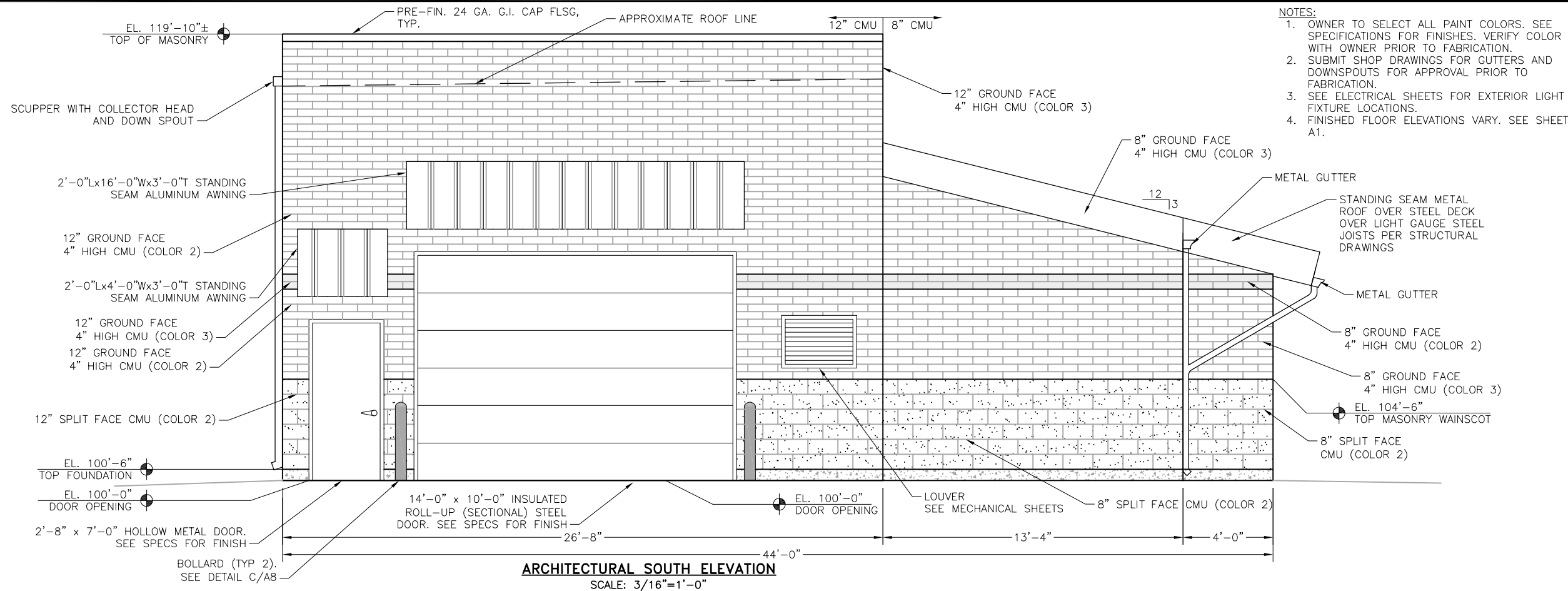
FOR REVIEW



Project No.: 102.104
Date: 01/15/20
Design: MLD/GGM
Drawn: ACH
Check: MLD

A3
SHEET ---OF

2021/10/28 12:23 PM By: Shelby Gatlin J:\JDS-Hydro\Project Files\102 Widefield Water And San\102.104 Booster 2 Pump Station\Drawings\Working\6_Architectural\102104_Arch.dwg



- NOTES:**
1. OWNER TO SELECT ALL PAINT COLORS. SEE SPECIFICATIONS FOR FINISHES. VERIFY COLOR WITH OWNER PRIOR TO FABRICATION.
 2. SUBMIT SHOP DRAWINGS FOR GUTTERS AND DOWNSPOUTS FOR APPROVAL PRIOR TO FABRICATION.
 3. SEE ELECTRICAL SHEETS FOR EXTERIOR LIGHT FIXTURE LOCATIONS.
 4. FINISHED FLOOR ELEVATIONS VARY. SEE SHEET A1.

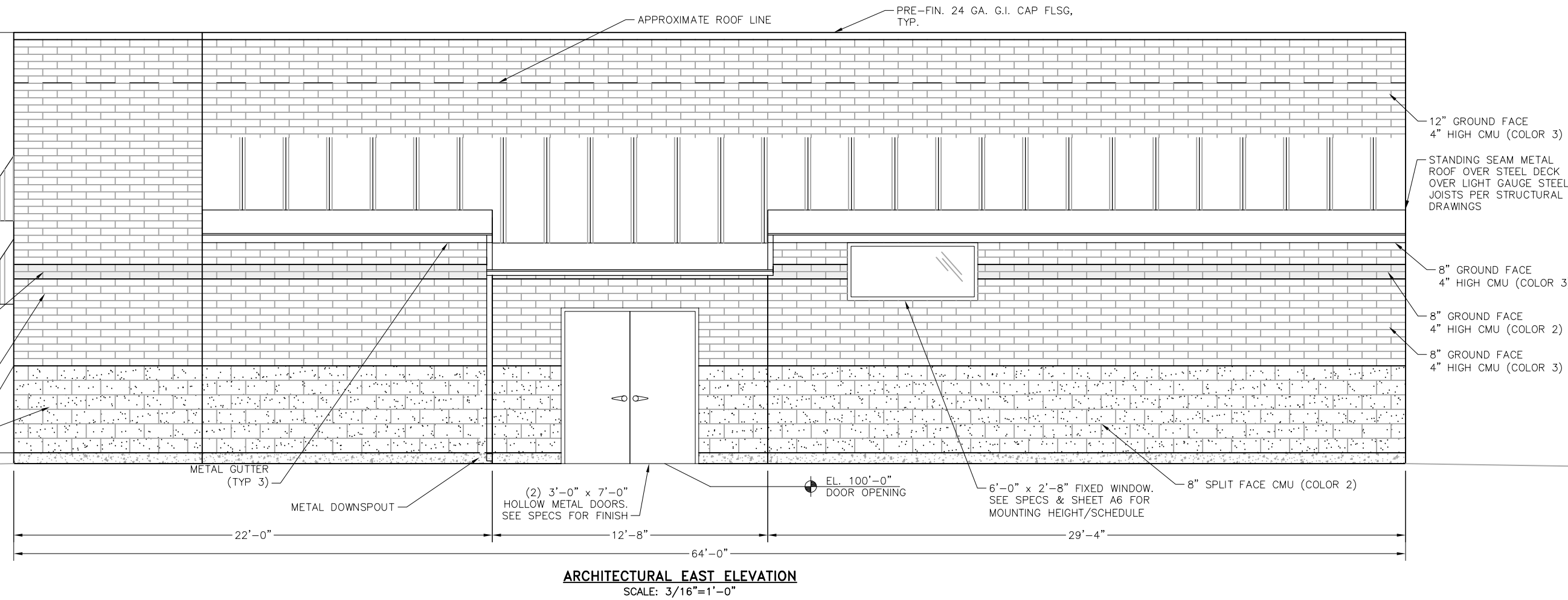
JDS-HYDRO CONSULTANTS, INC.
5540 TECH CENTER DR., SUITE 100
COLORADO SPRINGS, COLORADO 80919
(719) 227-0072

DISCLAIMER: THE CONTRACTOR SHALL VERIFY ALL DIMENSIONS. ANY ERRORS OR OMISSIONS SHALL BE REPORTED TO JDS-HYDRO CONSULTANTS, INC. JDS-HYDRO ASSUMES NO LIABILITY FOR UNAUTHORIZED CHANGES AND/OR REVISIONS MADE TO PLANS.

WIDEFIELD WATER AND SANITATION DISTRICT
BOOSTER 2 PUMP STATION REPLACEMENT
ARCHITECTURAL ELEVATIONS
SOUTH AND EAST

NO.	DESCRIPTION	BY	APP.	DATE
1				
2				
3				
4				
5				
6				
7				

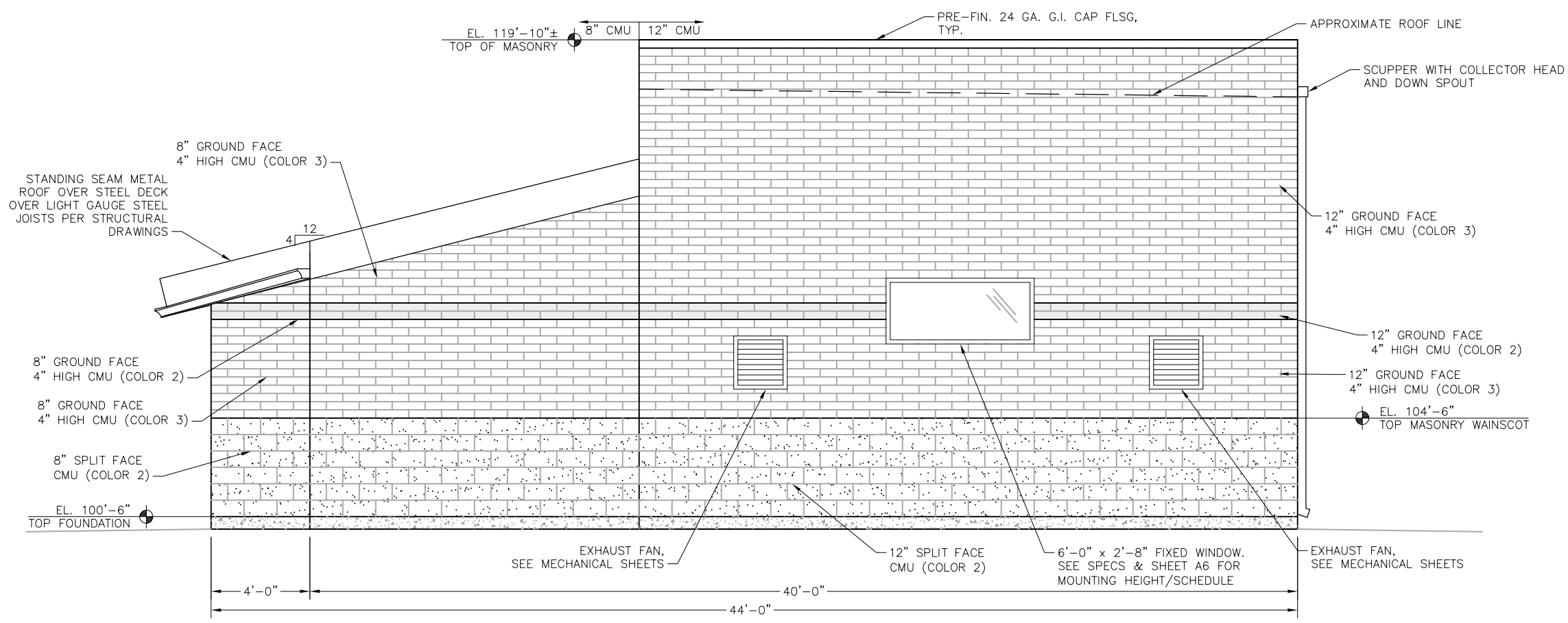
FOR REVIEW



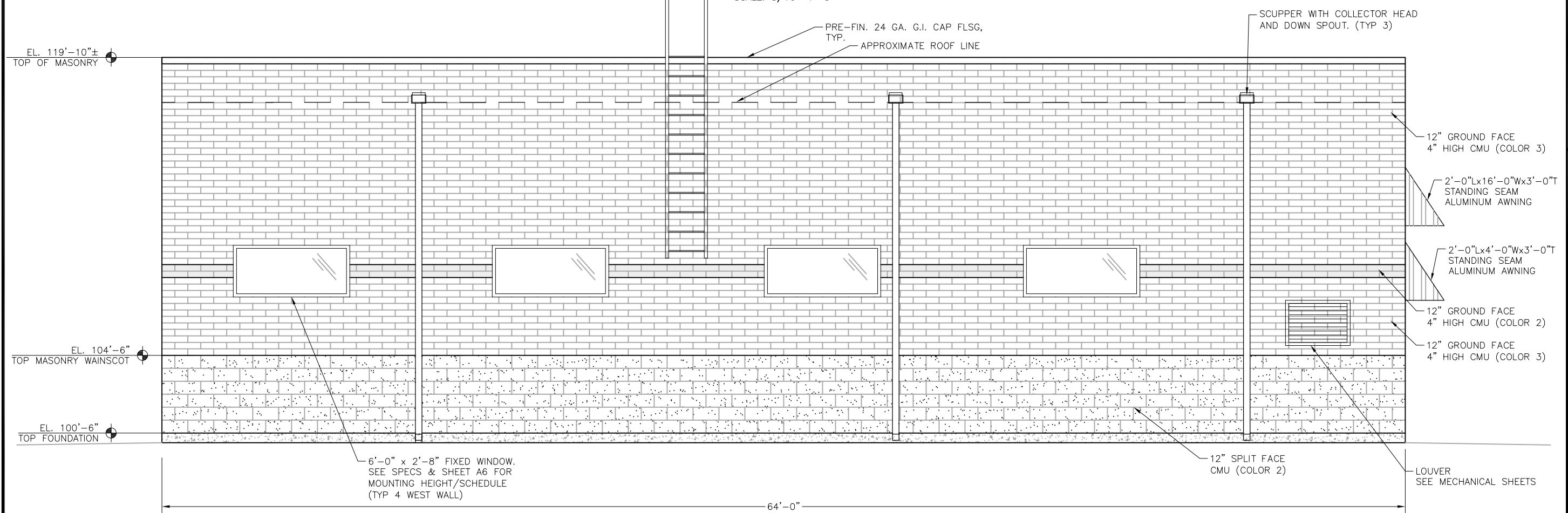
Project No.: 102.104
Date: 01/15/20
Design: MLD/GGM
Drawn: ACH
Check: MLD

A3
SHEET ---OF

2021/10/28 12:23 PM By: Shelby Gatin J:\JDS-Hydro\Project Files\102 Widefield Water And San\102.104 Booster 2 Pump Station\Drawings\Working\6_Architectural\102.104_Arch.dwg



ARCHITECTURAL NORTH ELEVATION
SCALE: 3/16"=1'-0"



ARCHITECTURAL WEST ELEVATION
SCALE: 3/16"=1'-0"

- NOTES:**
1. OWNER TO SELECT ALL PAINT COLORS. SEE SPECIFICATIONS FOR FINISHES. VERIFY COLOR WITH OWNER PRIOR TO FABRICATION.
 2. SUBMIT SHOP DRAWINGS FOR GUTTERS AND DOWNSPOUTS FOR APPROVAL PRIOR TO FABRICATION.
 3. SEE ELECTRICAL SHEETS FOR EXTERIOR LIGHT FIXTURE LOCATIONS.
 4. FINISHED FLOOR ELEVATIONS VARY. SEE SHEET A1.

JDS-HYDRO CONSULTANTS, INC.
5540 TECH CENTER DR., SUITE 100
COLORADO SPRINGS, COLORADO 80919
(719) 227-0072

DISCLAIMER: THE CONTRACTOR SHALL VERIFY ALL DIMENSIONS. ANY ERRORS OR OMISSIONS SHALL BE REPORTED TO JDS-HYDRO CONSULTANTS, INC. JDS-HYDRO ASSUMES NO LIABILITY FOR UNAUTHORIZED CHANGES AND/OR REVISIONS MADE TO PLANS.

WIDEFIELD WATER AND SANITATION DISTRICT
BOOSTER 2 PUMP STATION REPLACEMENT
ARCHITECTURAL ELEVATIONS
NORTH AND WEST

NO.	DESCRIPTION	BY	APP.	DATE
1				
2				
3				
4				
5				
6				
7				

FOR REVIEW

Project No.: 102.104
Date: 01/15/20
Design: MLD/GGM
Drawn: ACH
Check: MLD

A4
SHEET ---OF