

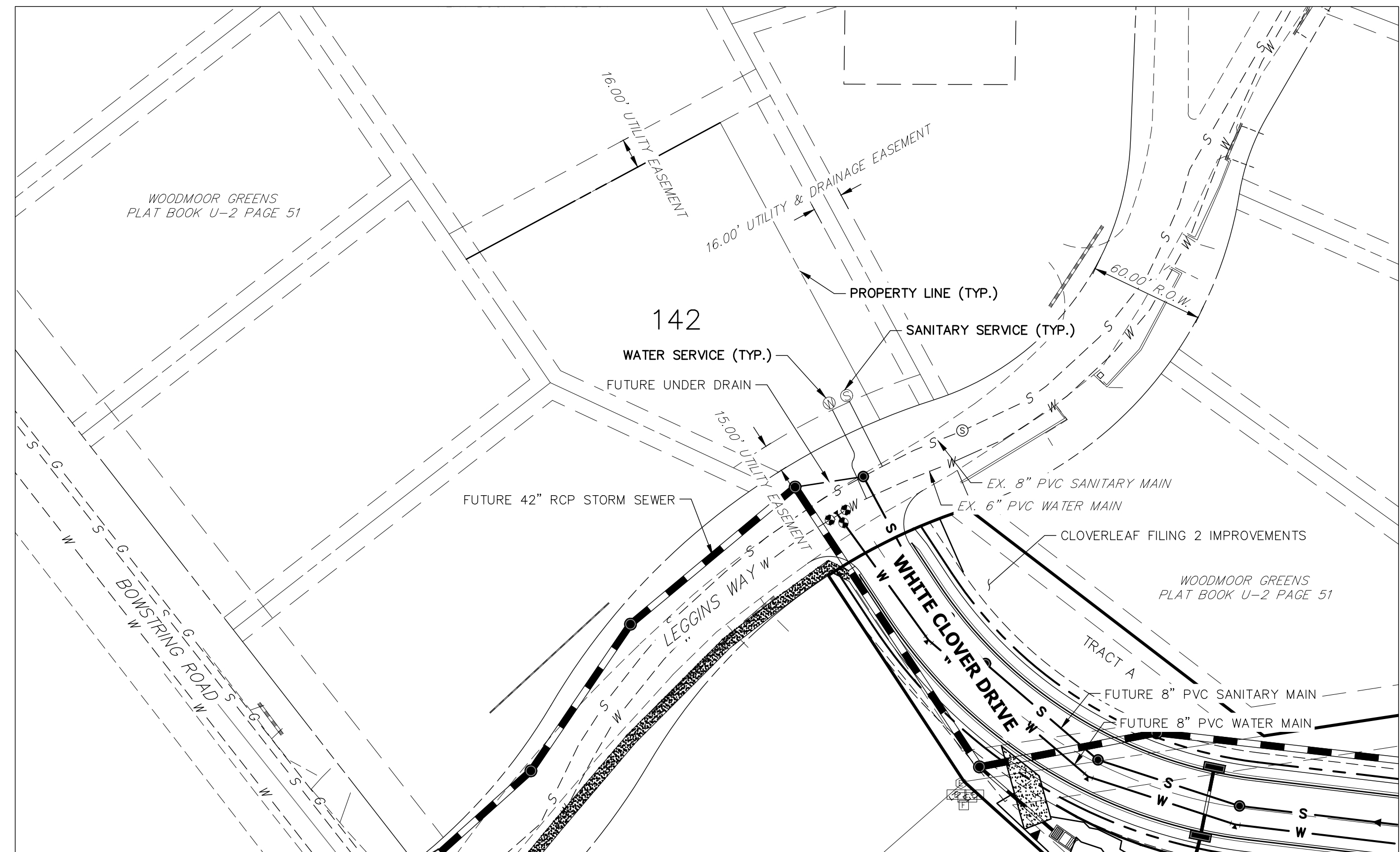
**PARCELS 2-1 (LOT 144) AND 2-2 (LOT 143)**

## NOTES

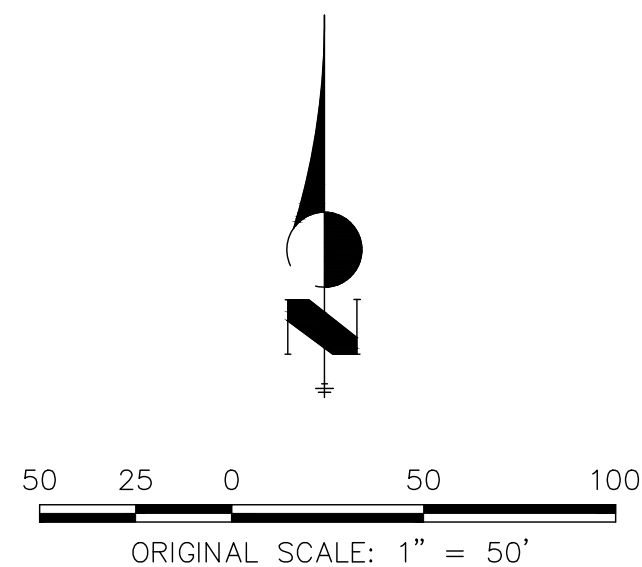
1. ALL SANITARY SERVICE LINES SHALL BE 4" PVC AND INSTALLED PER DETAIL G-8.
2. ALL POTABLE WATER SERVICE LINES SHALL BE 3/4" TYPE K COPPER AND INSTALLED PER DETAIL G-6.
3. A MINIMUM OF 10' SEPARATION BETWEEN WATER AND SANITARY LINES IS REQUIRED. SERVICE SHALL BE AT LEAST 10' AWAY FROM SIDE LOT LINES, PER DETAIL G-5.
4. PROVIDE METAL T-POST AT CURB STOP WHEN CONSTRUCTION OF WATER SERVICE IS COMPLETE.
5. PROVIDE METAL T-POST AT CLEAN OUT WHEN CONSTRUCTION OF SANITARY SERVICE IS COMPLETE.
6. SERVICES STUB OUTS SHALL EXTENDED TO THE INSIDE EDGE OF FRONT UTILITY EASEMENT PER DETAILS G-8 AND G-6.



Know what's **below**.  
**Call** before you dig.



**PARCEL 2-3 (LOT 142)**

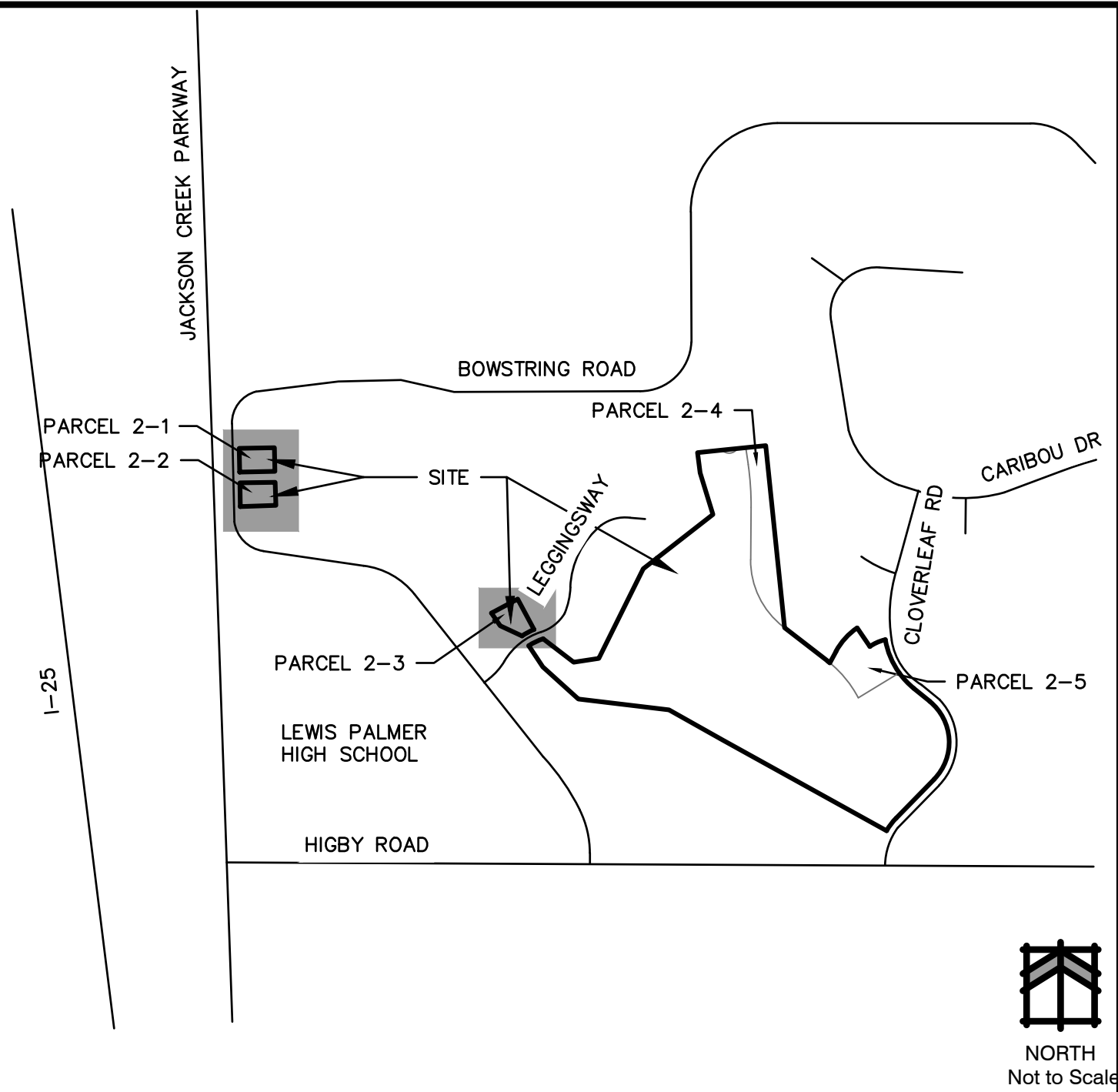


WOODMOOR WATER AND SANITATION DISTRICT NO. 1  
APPROVED FOR CONSTRUCTION

DATE:

BY:

THESE PLANS HAVE BEEN REVIEWED ONLY FOR GENERAL CONFORMANCE WITH DISTRICT RULES AND REGULATIONS AND SYSTEM SPECIFICATIONS. REVIEW AND CONSTRUCTION APPROVAL BY THE DISTRICT DOES NOT RELIEVE THE DEVELOPER/OWNER AND/OR CONTRACTOR FROM RESPONSIBILITY FOR COMPLIANCE WITH ANY RULES, REGULATIONS, OR SPECIFICATIONS REQUIRED BY THE DISTRICT.



PREPARED FOR

**PT CLOVERLEAF, LLC**  
1864 WOODMOR DRIVE  
COLORADO SPRINGS, CO 80920  
ATTN: JOE DESJARDIN  
(719) 476-0800  
JDESJARDIN@PROTERRACO.COM

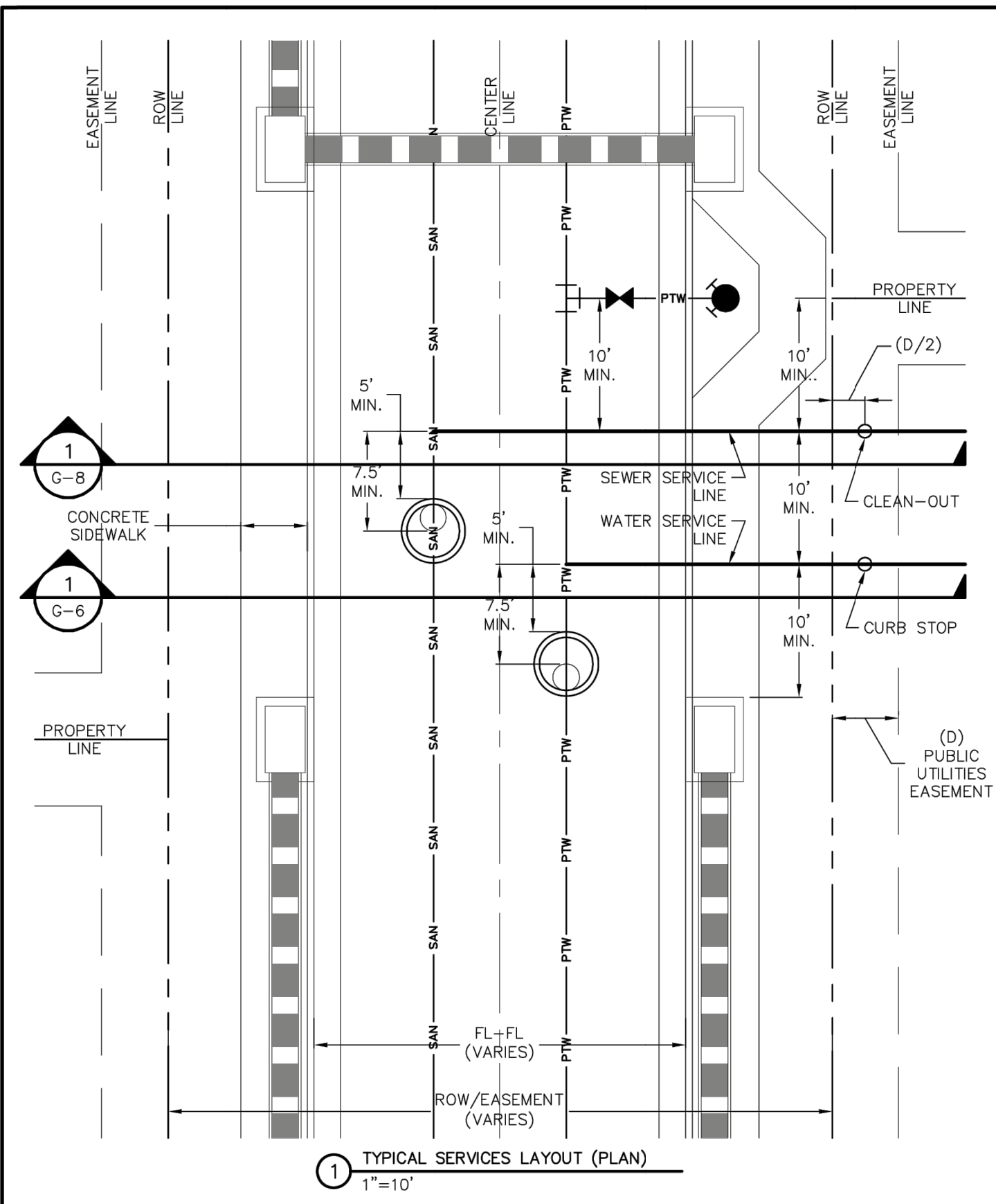
**J·R ENGINEERING**  
A Westrian Company



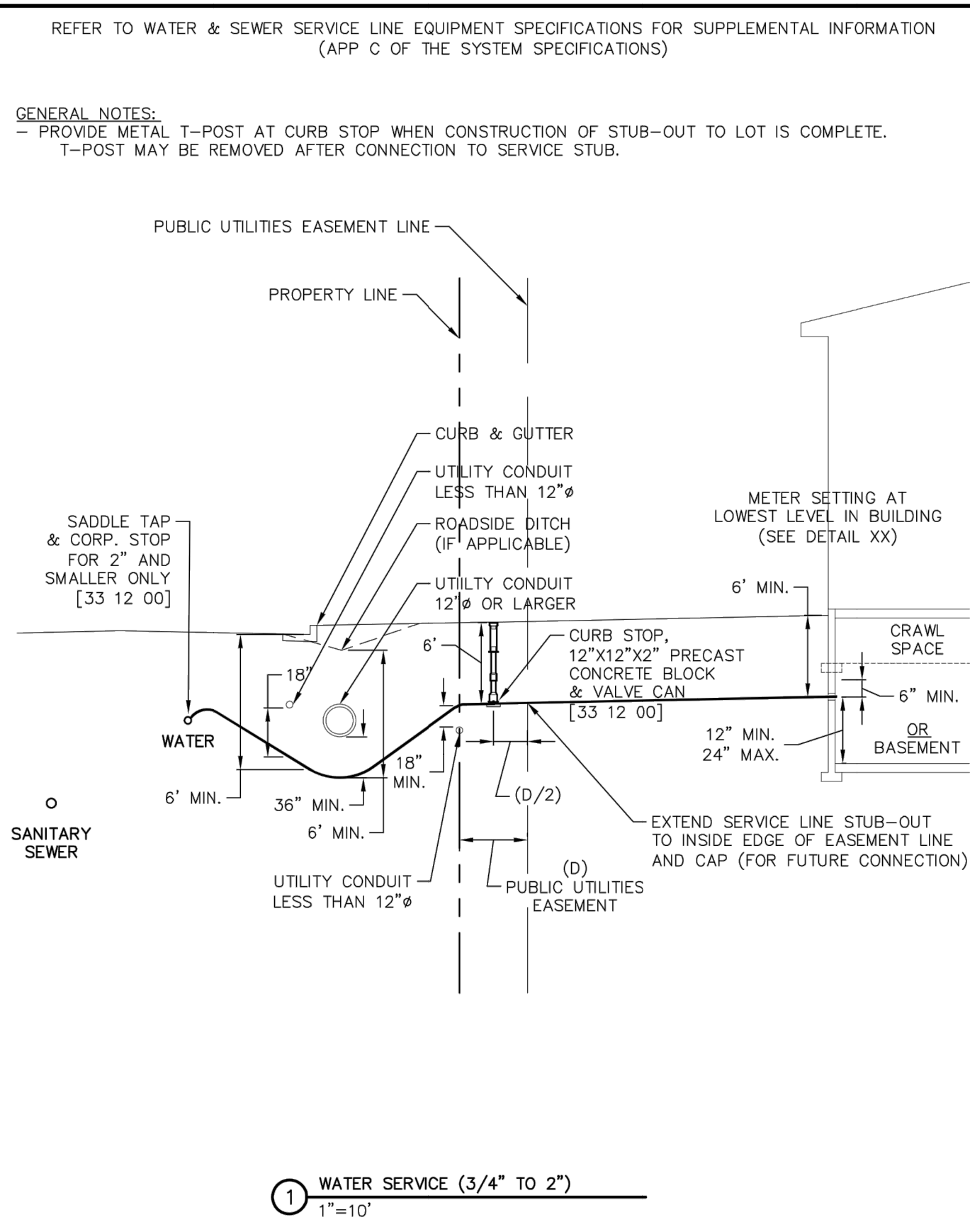
Centennial 303-740-9393 • Colorado Springs 719-593-2593  
Fort Collins 970-491-9888 • [www.jirengineering.com](http://www.jirengineering.com)

CLOVERLEAF FILING 1	H-SCALE	1"=50'	No.	REVISION	BY	DATE
	V-SCALE	N/A				
	DATE	02/03/21				
	DESIGNED BY	APL				
	DRAWN BY	APL				
UTILITY SERVICE PLAN	CHECKED BY					
SHEET 2 OF 3						
JOB NO.	25158.01					

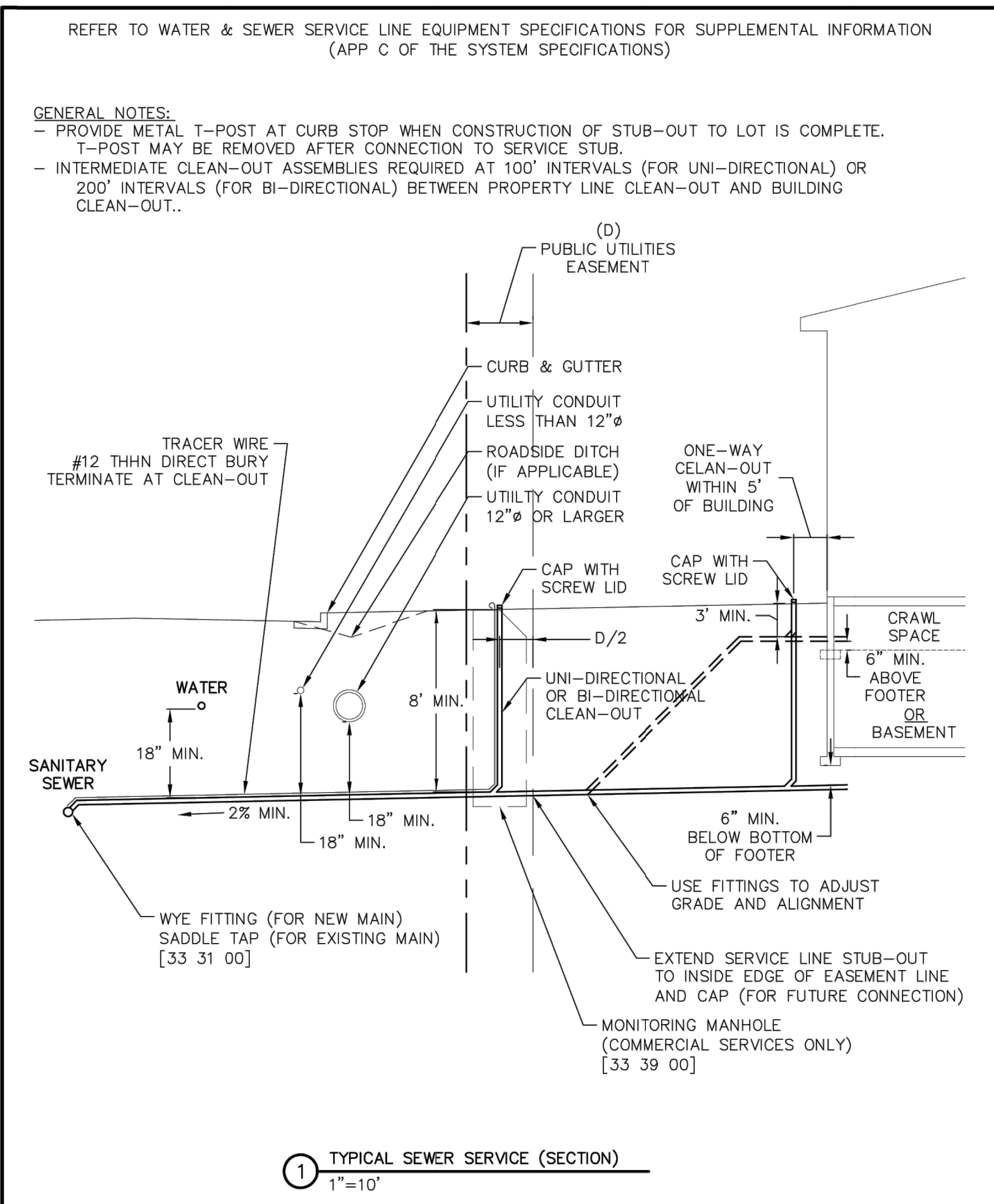




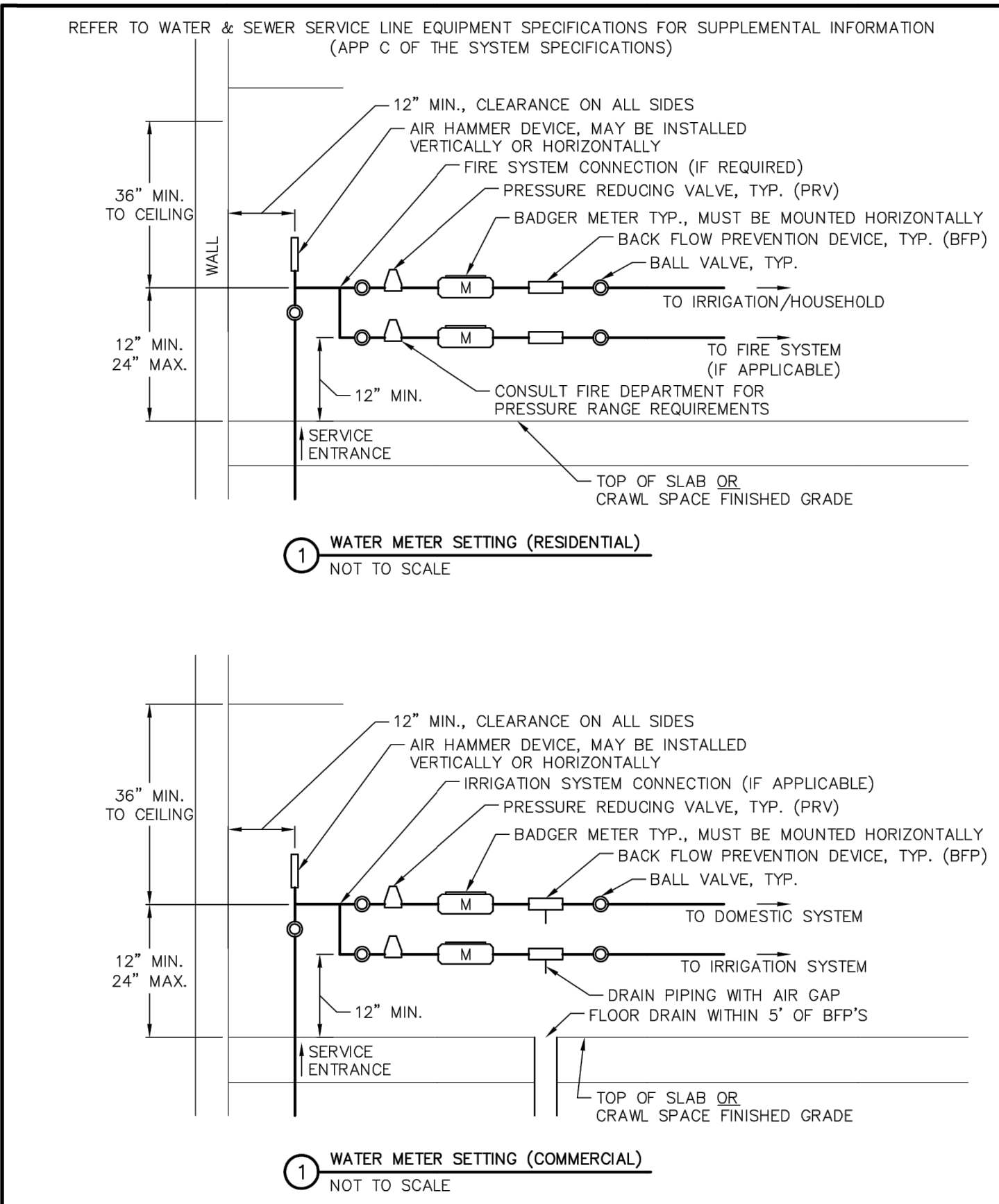
	TYPICAL SERVICES LAYOUT (PLAN)	G-5
	GENERAL	-
	THIS CONSTRUCTION DETAIL SHOWS GENERAL CONFORMANCE TO SYSTEM SPECIFICATIONS AND MAY NEED TO BE ADJUSTED FOR SPECIFIC APPLICATIONS. MAY 13, 2014	



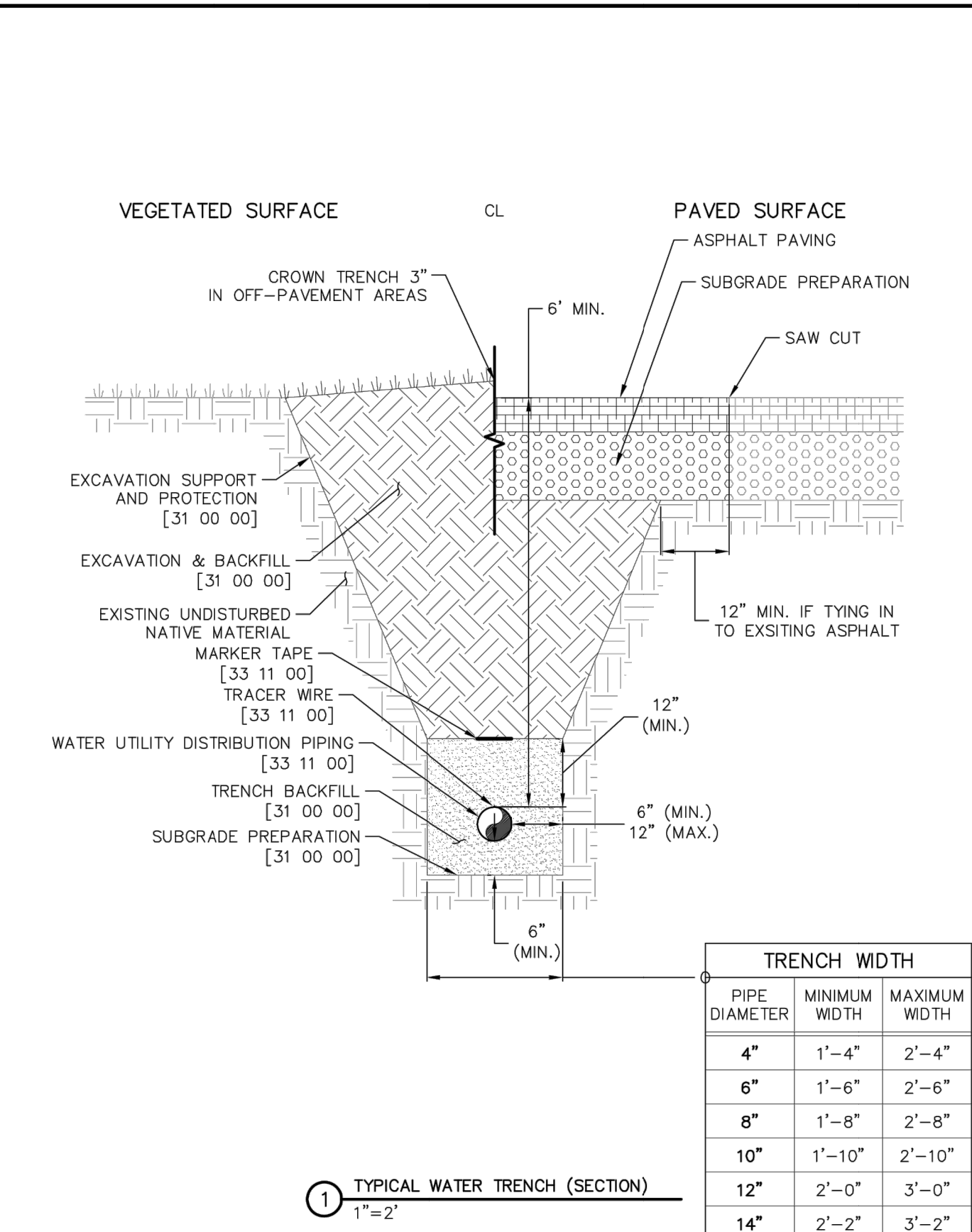
	WATER SERVICE (3/4" TO 2")	G-6
	GENERAL	-
	THIS CONSTRUCTION DETAIL SHOWS GENERAL CONFORMANCE TO SYSTEM SPECIFICATIONS AND MAY NEED TO BE ADJUSTED FOR SPECIFIC APPLICATIONS. MAY 13, 2014	



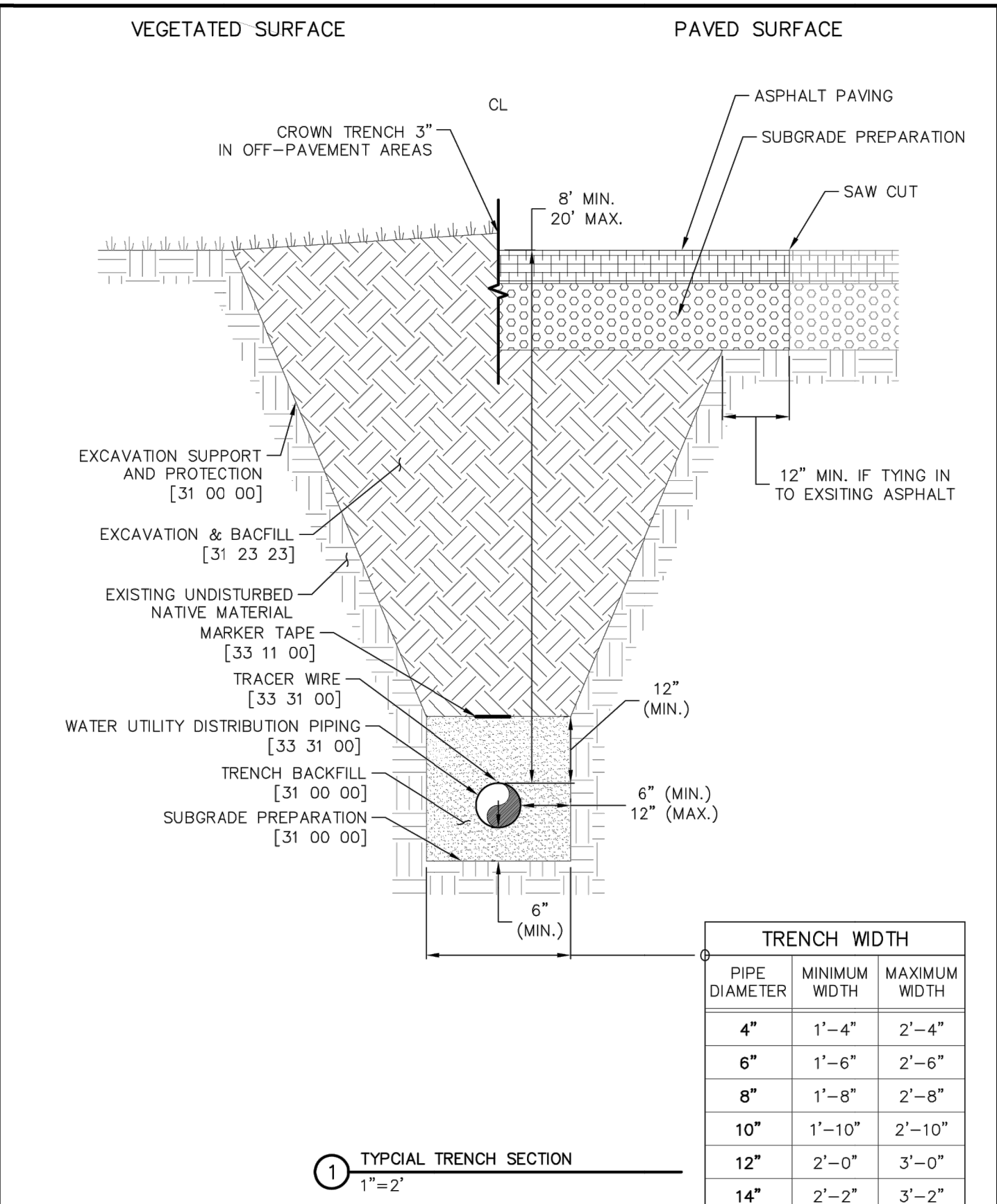
	TYPICAL SEWER SERVICE (SECTION)	G-8
	GENERAL	-
	THIS CONSTRUCTION DETAIL SHOWS GENERAL CONFORMANCE TO SYSTEM SPECIFICATIONS AND MAY NEED TO BE ADJUSTED FOR SPECIFIC APPLICATIONS. MAY 13, 2014	



	WATER METER SETTING DETAIL	G-9
	GENERAL	-
	THIS CONSTRUCTION DETAIL SHOWS GENERAL CONFORMANCE TO SYSTEM SPECIFICATIONS AND MAY NEED TO BE ADJUSTED FOR SPECIFIC APPLICATIONS. MAY 13, 2014	



	TYPICAL WATER TRENCH	W-1
	WATER UTILITY DISTRIBUTION PIPING	33 11 00
	THIS CONSTRUCTION DETAIL SHOWS GENERAL CONFORMANCE TO SYSTEM SPECIFICATIONS AND MAY NEED TO BE ADJUSTED FOR SPECIFIC APPLICATIONS. MAY 13, 2014	



	TYPICAL SEWER TRENCH SECTION	S-1
	SANITARY UTILITY SEWERAGE PIPING	33 31 00
	THIS CONSTRUCTION DETAIL SHOWS GENERAL CONFORMANCE TO SYSTEM SPECIFICATIONS AND MAY NEED TO BE ADJUSTED FOR SPECIFIC APPLICATIONS. MAY 13, 2014	



Know what's below.  
Call before you dig.

UNTIL SUCH TIME AS THESE DRAWINGS ARE APPROVED BY THE AGENCIES, OR ENGINEERING APPROVES THEIR USES DESIGNATED BY WRITTEN AUTHORIZATION.

PREPARED FOR  
**PT CLOVERLEAF, LLC**  
1864 WOODMOR DRIVE  
COLORADO SPRINGS, CO 80920  
ATTN: JOE DESJARDIN  
(719) 476-0800  
JDESJARDIN@PROTERRACO.COM

**J.R. ENGINEERING**  
A Western Company  
Central 303-740-9383 • Colorado Springs 719-593-2593  
Fort Collins 970-491-9888 • www.jrengineering.com

BY	DATE	REVISION	No.	H-SCALE	N/A	V-SCALE	N/A	DATE	DESIGNED BY	APL	DRAWN BY	CHECKED BY
								02/03/21				

CLOVERLEAF FLING 1		DETAIL SHEET	
SHEET	3	OF	3
JOB NO.	25158.01		