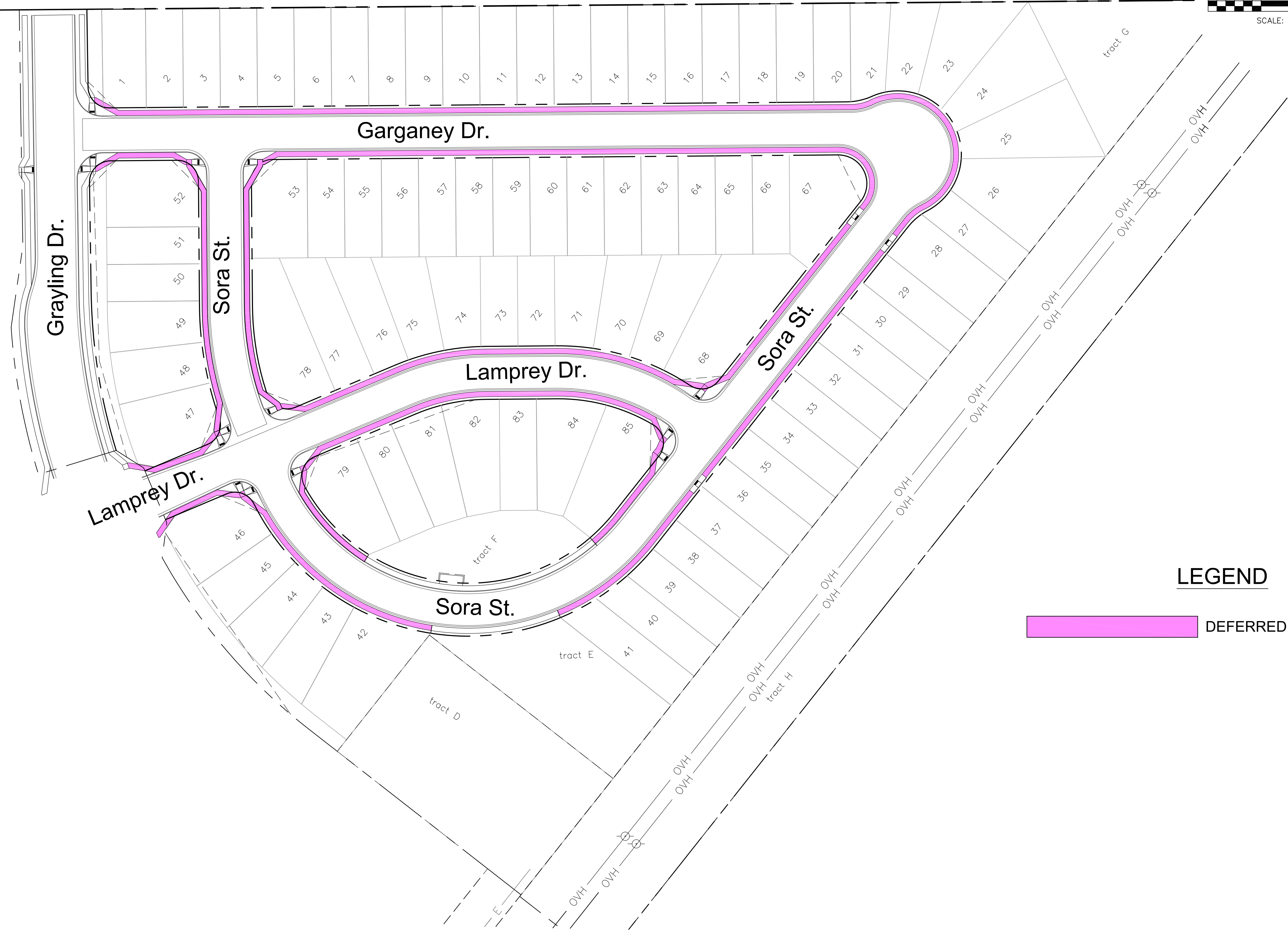
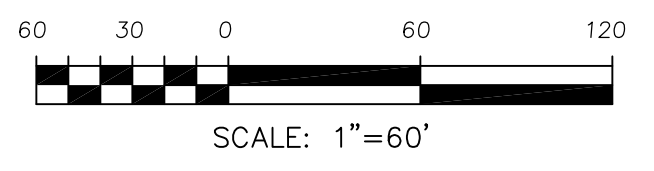
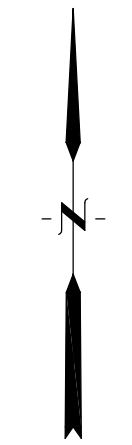


Exhibit B



LEGEND

DEFERRED SIDEWALK

CORE
ENGINEERING GROUP
 15004 1ST AVENUE S.
 SUITE 100
 PARKER, CO. 80130
 CONTACT: RICHARD L. SCHINDLER, P.E.
 EMAIL: Rich@ceg1.com

| NO. | DESCRIPTION | DATE |
|-----|-------------|------|
| | | |
| | | |
| | | |

PREPARED FOR:
LORSON, LLC
 212 N. WAHSATCH AVE, SUITE 301
 COLORADO SPRINGS, COLORADO 80903
 (719) 635-3200
 CONTACT: JEFF MARK

DRAWN: RLS
 DESIGNED: RLS
 CHECKED: RLS

PROJECT:
 SKYLINE AT LORSON
 RANCH FIL. NO. 1
 GRADING, DR. LAYOUT, DE
 COLORADO SPRINGS, COLORADO

SIDEWALK ADDENDUM
SKYLINE AT
LORSON RANCH FIL NO. 1

DATE:
 DECEMBER 8, 2023

PROJECT NO.
 100.063

SHEET NUMBER
 1

TOTAL SHEETS: 1

2023 Financial Assurance Estimate Form
(Sidewalk Addendum)

Updated: 10/2023

| PROJECT INFORMATION | | |
|------------------------------------|-----------|--------------|
| Skyline at Lorson Ranch Fil. No. 1 | 11/8/2023 | |
| Project Name | Date | PCD File No. |

| Description | Quantity | Units | Unit Cost | | Total |
|---|----------|-------|-------------|---|---------------|
| SECTION 2A - PUBLIC IMPROVEMENTS * | | | | | |
| Deferred Sidewalk Improvements | | | | | |
| 5" Thick Deferred Sidewalk | 2,386.0 | SY | \$ 72.00 | = | \$ 171,792.00 |
| 6" Thick Deferred Sidewalk | | SY | \$ 87.00 | = | \$ - |
| 8" Thick Deferred Sidewalk | | SY | \$ 116.00 | = | \$ - |
| Pedestrian Ramp | | EA | \$ 1,390.00 | = | \$ - |
| <i>[insert items not listed but part of construction plans]</i> | | | | = | \$ - |

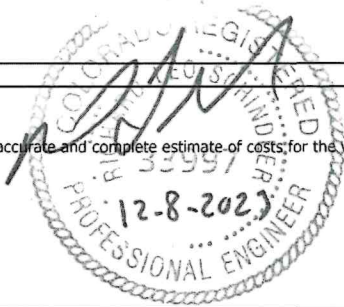
* - Subject to defect warranty financial assurance.

The County retains the authority to adjust the amount of financial assurance at its discretion, aligning with current estimates of public improvements. This includes the option to both increase or decrease the assurance amount as deemed necessary. Such adjustments ensure the ongoing adequacy and appropriateness of the retained assurance in relation to the dynamic nature of construction projects and costs.

Total Construction & Defect Warranty Financial Assurance \$ 171,792.00

Approvals

I hereby certify that this is an accurate and complete estimate of costs for the work as shown on the Grading and Erosion Control Plan and Construction Drawings associated with the Project.



Engineer (P.E. Seal Required)

 Approved by Owner / Applicant
 Approved by El Paso County Engineer / ECM Administrator

12/11/23

Date

Date