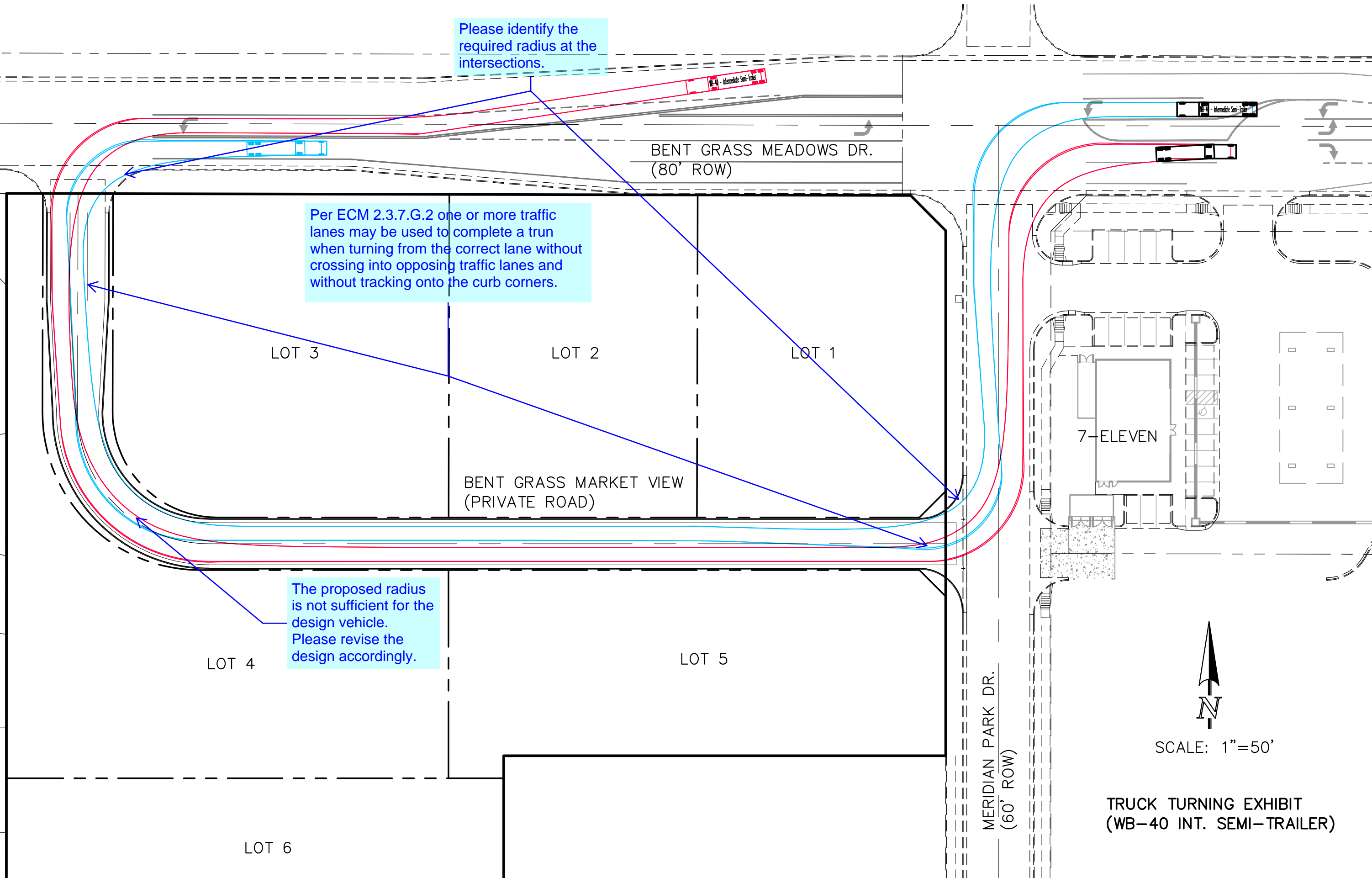


N:\217764\DRAWINGS\truck turning.dwg, 5/4/2021 4:50:26 PM, 1:50

Please identify the required radius at the intersections.

Per ECM 2.3.7.G.2 one or more traffic lanes may be used to complete a turn when turning from the correct lane without crossing into opposing traffic lanes and without tracking onto the curb corners.

The proposed radius is not sufficient for the design vehicle. Please revise the design accordingly.



N
SCALE: 1"=50'

TRUCK TURNING EXHIBIT
(WB-40 INT. SEMI-TRAILER)