

Legend

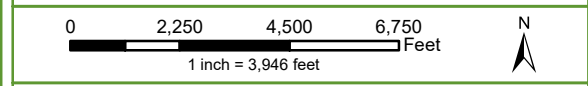
- Proposed Grandview Project Area
- Preliminary Haul Route
Haul anticipated in both directions

Notes:

The proposed preliminary haul routes are for legal loads only. Any oversized or overweight loads will require a specific permit.


As projects are contracted out, different haul routes may be proposed by the applicant to EPC.

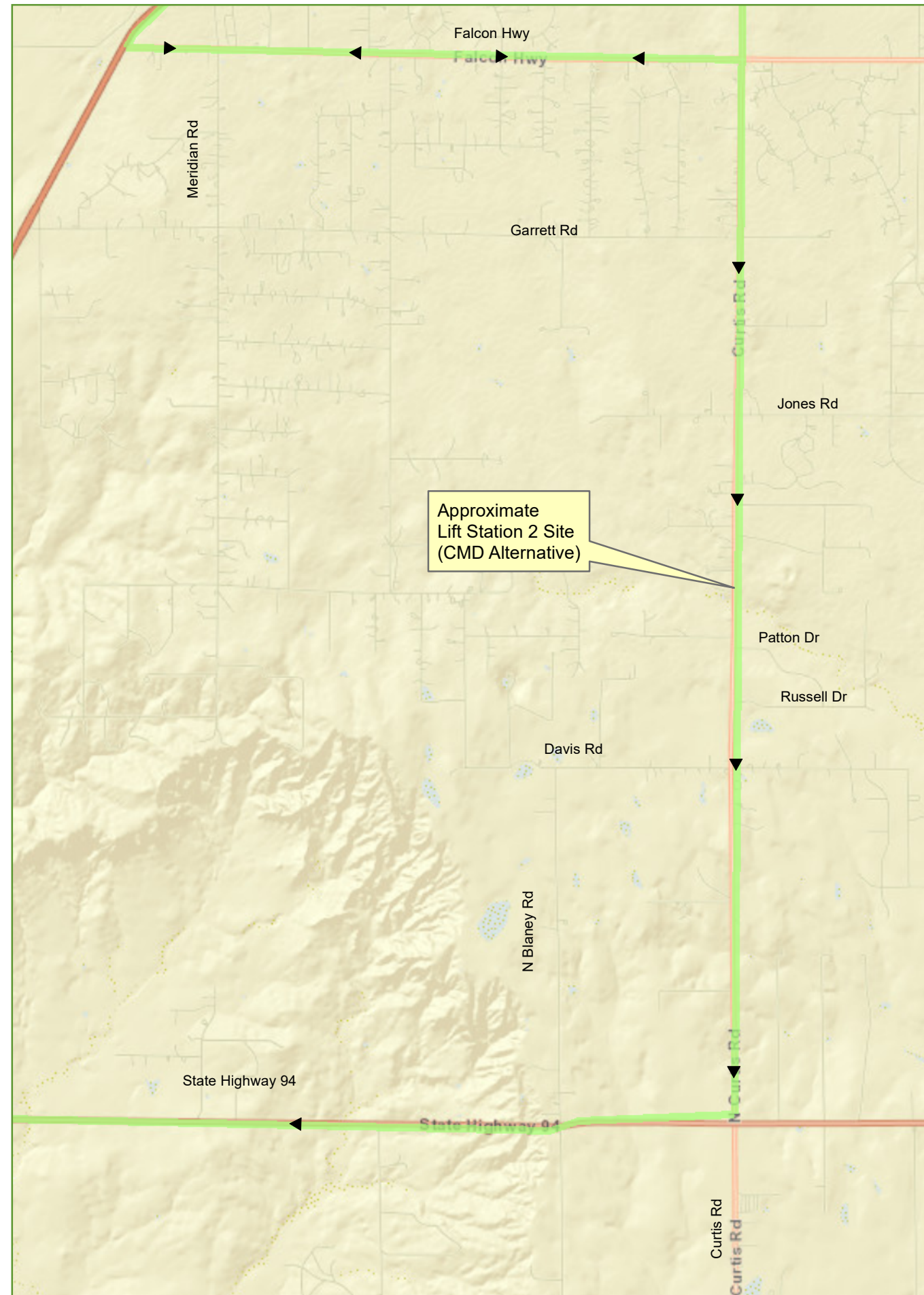
These preliminary haul routes are for construction of infrastructure covered by the 1041 permit only.



Haul Route Exhibit

Grandview Reserve Metropolitan District 1041

| | | |
|--|--|--|
|  HRGreen | 1975 Research Parkway Suite 230 Colorado Springs, CO 80920 Phone: 719.300.4140 | DATE: 12/5/2023 DRAWN BY: SJF |
| | HRG JOB NO: 201662 | APPROVED BY: MTV |



Legend

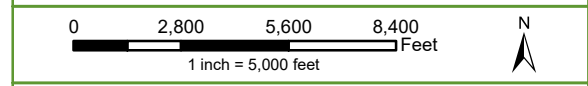
- Proposed Grandview Project Area
- Preliminary Haul Route
Haul anticipated in both directions

Notes:

The proposed preliminary haul routes are for legal loads only. Any oversized or overweight loads will require a specific permit.


As projects are contracted out, different haul routes may be proposed by the applicant to EPC.

These preliminary haul routes are for construction of infrastructure covered by the 1041 permit only.



Haul Route Exhibit

Grandview Reserve Metropolitan District 1041

| | | |
|--|--|------------------|
|  HRGreen | 1975 Research Parkway Suite 230 Colorado Springs, CO 80920 Phone: 719.300.4140 | DATE: 12/5/2023 |
| | | DRAWN BY: SJF |
| HRG JOB NO: 201662 | APPROVED BY: MTV | DESIGNED BY: SJF |