

LEGEND

METRO DISTRICT BOUNDARY

RAW WATER

WELL SITE LOCATIONS

■ W-XX

WATER TREATMENT PLANT

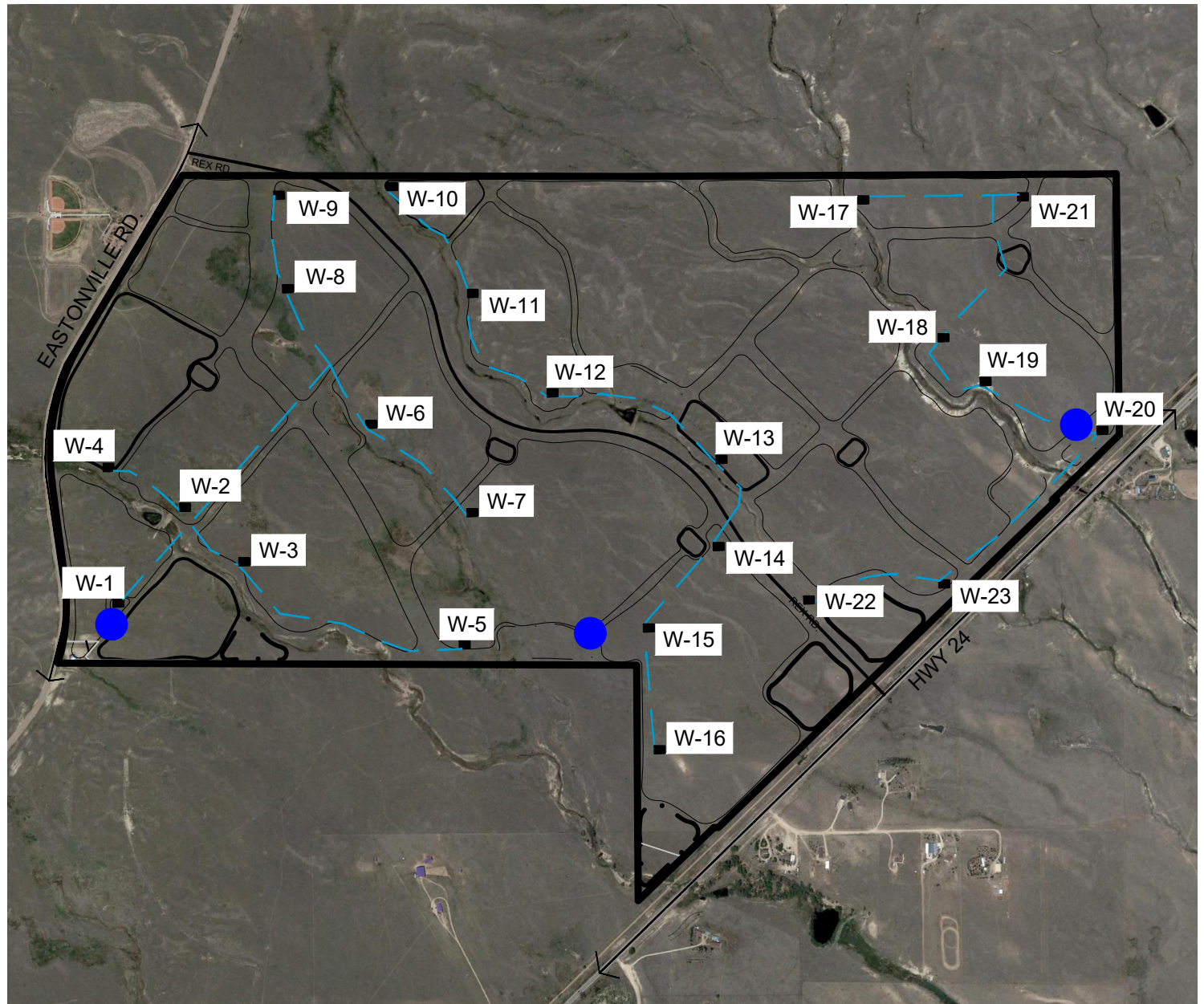


NON-POTABLE WATER

IMPROVEMENTS DESCRIPTIONS:

NON-POTABLE WATER SYSTEM WILL INCLUDE WELL WATER COLLECTION AND TRANSPORT TO A CENTRAL WATER TREATMENT FACILITY. NON-POTABLE MAIN IMPROVEMENTS WILL INCLUDE ALL FITTINGS, BLOW-OFFS, AIR RELEASE VALVES, GATE VALVES AND TERMINAL PLUGS.

WELLS WITHIN THE SAME AQUIFER ARE SPACED AT A MINIMUM OF 600 FT.



HRGreen.com

HRGreen

GRANDVIEW RESERVE
METROPOLITAN DISTRICT
NON-POTABLE WATER

SHEET

8

SCALE: 1" = 1250'

DATE: 04/01/2020

LEGEND

METRO DISTRICT
BOUNDARY

PROPOSED 12"
WATER MAIN

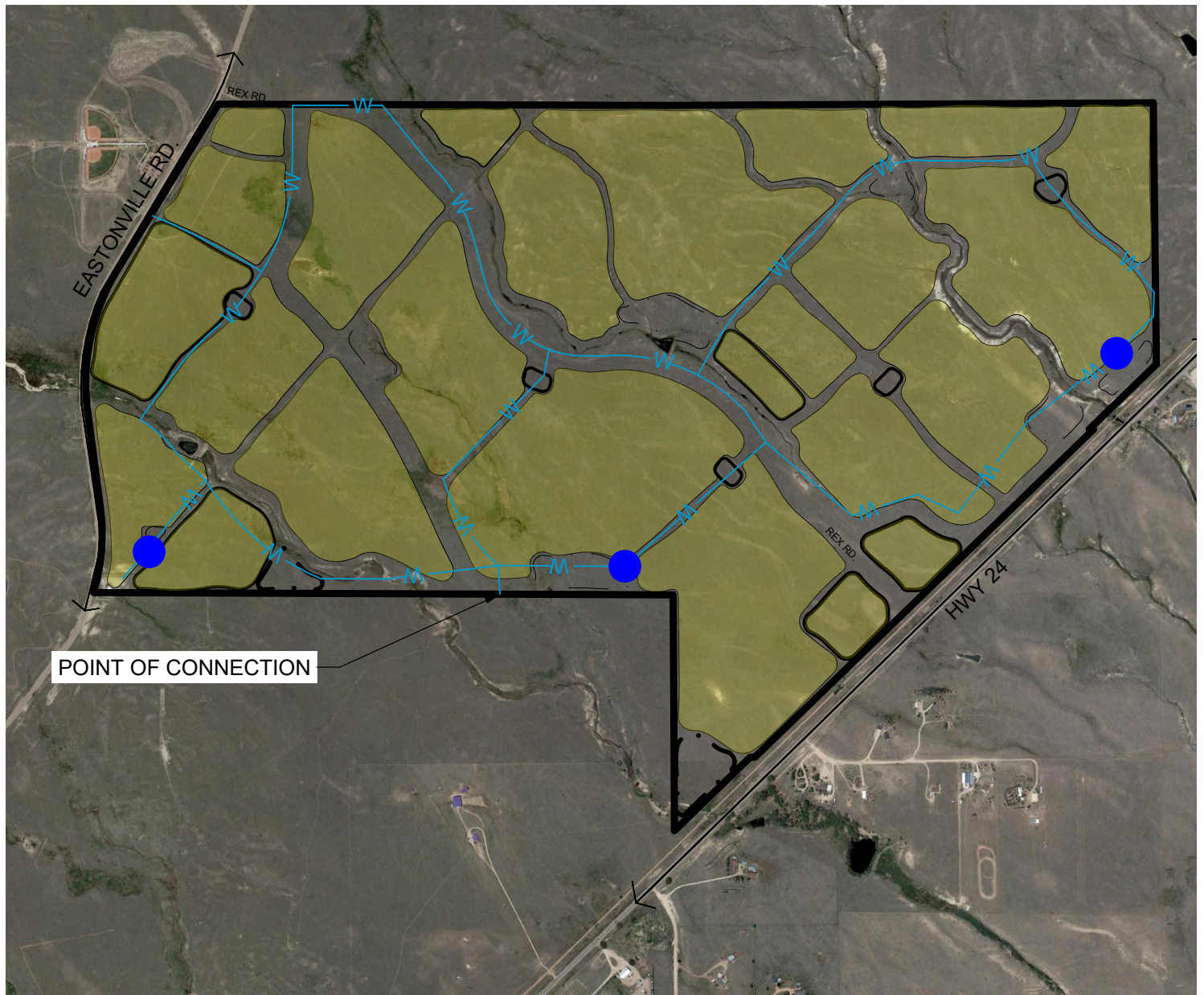
LOCALIZED WATER
DISTRIBUTION

WATER TREATMENT
PLANT

WATER MAIN IMPROVEMENTS

DESCRIPTION:

POTABLE WATER MAIN IMPROVEMENTS WILL INCLUDE PVC WATERMAINS ROUTED WITHIN ALL INTERNAL ROADWAYS TO PROVIDE POINT OF SERVICE CONNECTION TO ALL PLATTED LOTS. WATER MAIN IMPROVEMENTS WILL INCLUDE ALL FITTINGS, FIRE HYDRANTS, GATE VALVES, BLOW-OFFS, AIR RELEASE VALVES AND TERMINAL PLUGS.



HRGreen.com

GRANDVIEW RESERVE
METROPOLITAN DISTRICT
WATER MAIN

SHEET

6

SCALE: 1" = 1250'

DATE: 04/01/2020