

LEGEND

METRO DISTRICT BOUNDARY



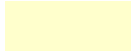
PROPOSED 18" SANITARY SEWER MAIN



PROPOSED FORCEMAIN

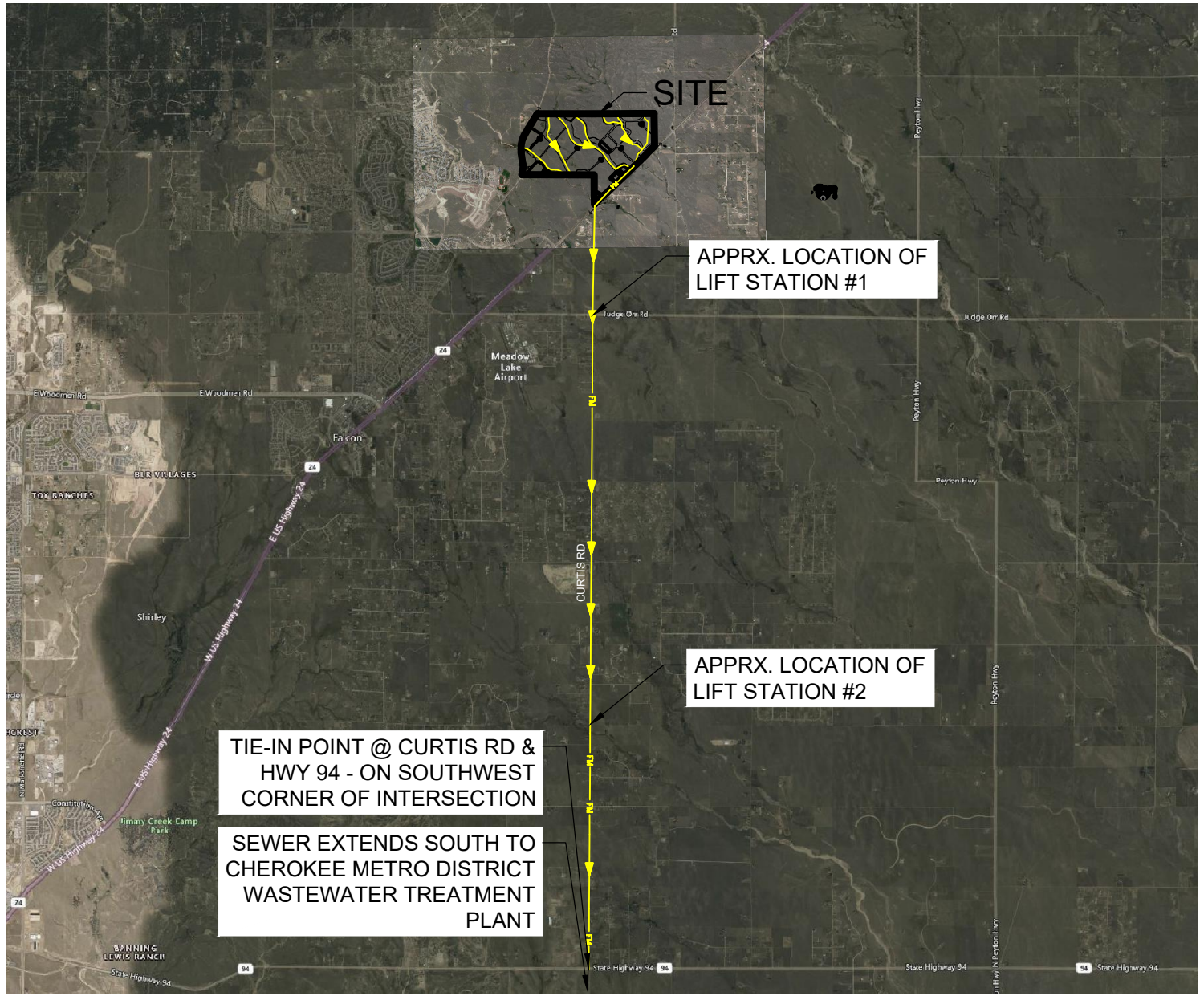


LOCALIZED SEWER COLLECTION



OFFSITE SANITARY IMPROVEMENT DESCRIPTIONS:

SANITARY SEWER WILL RUN DOWN CURTIS ROAD AND TRANSITION FROM FORCE MAIN TO GRAVITY SEWER AS SHOWN. SEWER WILL CONNECT TO EXISTING INFRASTRUCTURE AT HIGHWAY 94 AND CURTIS ROAD.



TIE-IN POINT @ CURTIS RD & HWY 94 - ON SOUTHWEST CORNER OF INTERSECTION

SEWER EXTENDS SOUTH TO CHEROKEE METRO DISTRICT WASTEWATER TREATMENT PLANT

APPRX. LOCATION OF LIFT STATION #1

APPRX. LOCATION OF LIFT STATION #2



HRGreen.com

GRANDVIEW RESERVE
METROPOLITAN DISTRICT
OFFSITE SANITARY SEWER

SHEET

10

SCALE: 1" = 10000'

DATE: 04/29/2021