

- NOTES:
- INSTALL NEOPRENE CLOSED CELL MEDIUM CASSETS WITH ADHESIVE ON ONE SIDE, 1/4" THICK x 2" WIDE BETWEEN ORIFICE PLATE AND STRUCTURE.
  - ALL ORIFICE PLATES, STRUCTURAL STEEL CHANNEL, AND CLOSE MESH GRATES SHALL BE HOT DIPPED GALVANIZED AFTER FABRICATION.
  - ALL ORIFICE PLATES SHALL BE MOUNTED WITH 3" x 1/2" STAINLESS STEEL CONCRETE ANCHOR BOLTS W/ WASHERS, AND NUTS AS SHOWN.

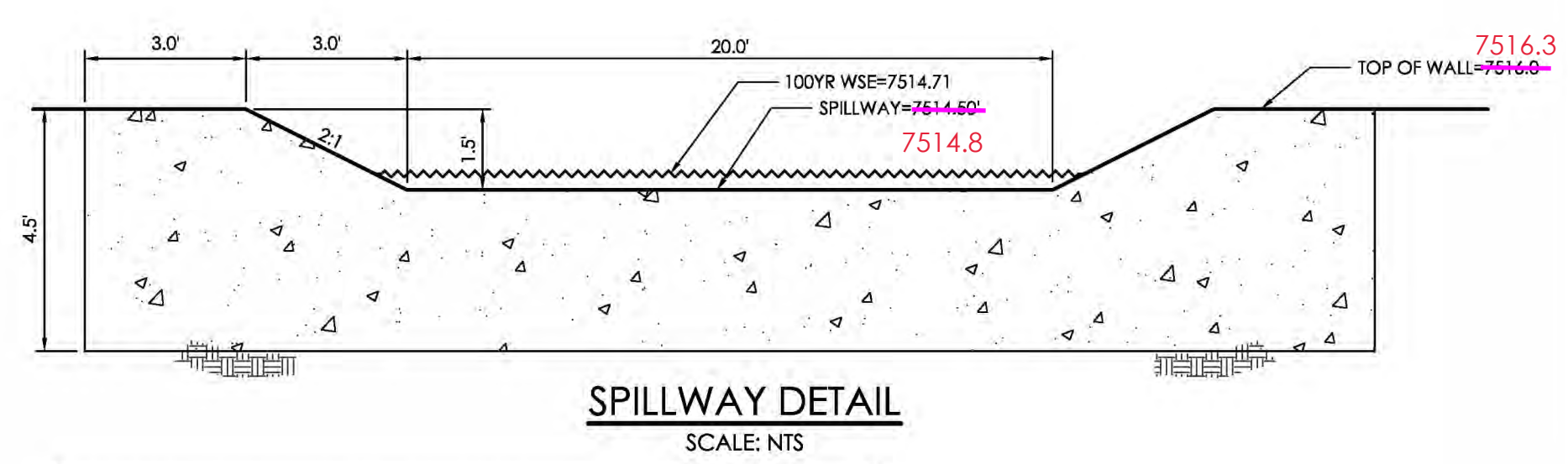
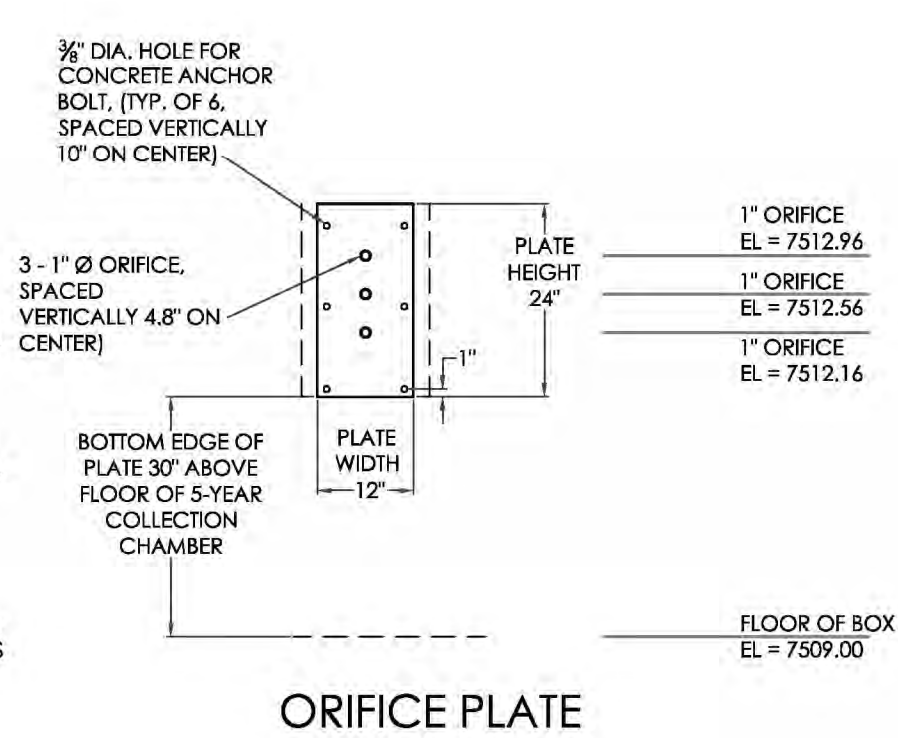


TABLE SF-2 (SLOTTED PIPE DIMENSIONS)

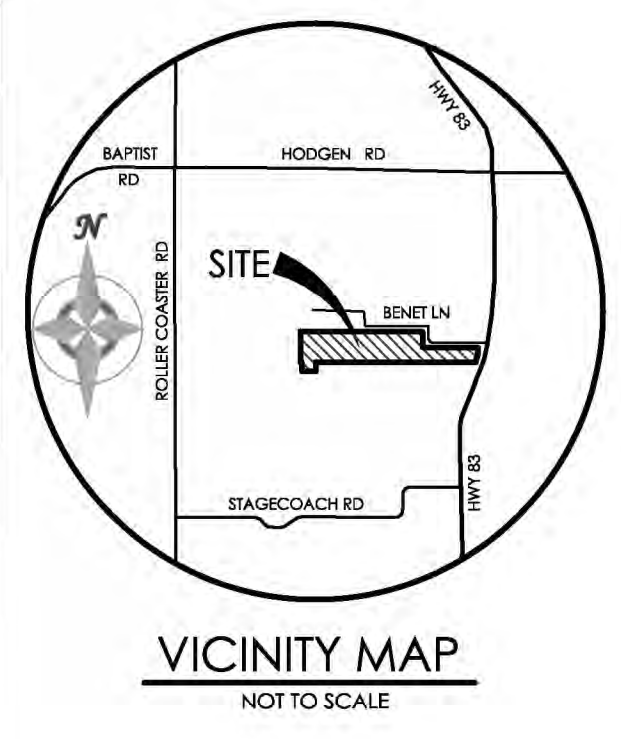
PIPE Ø	SLOT LENGTH	SLOT WIDTH	SLOT CENTERS	OPEN AREA (PER SF)
4"	1-1/16"	0.032"	0.413"	1.90 SQ. IN.

SOIL MATERIAL GRADATION TABLE

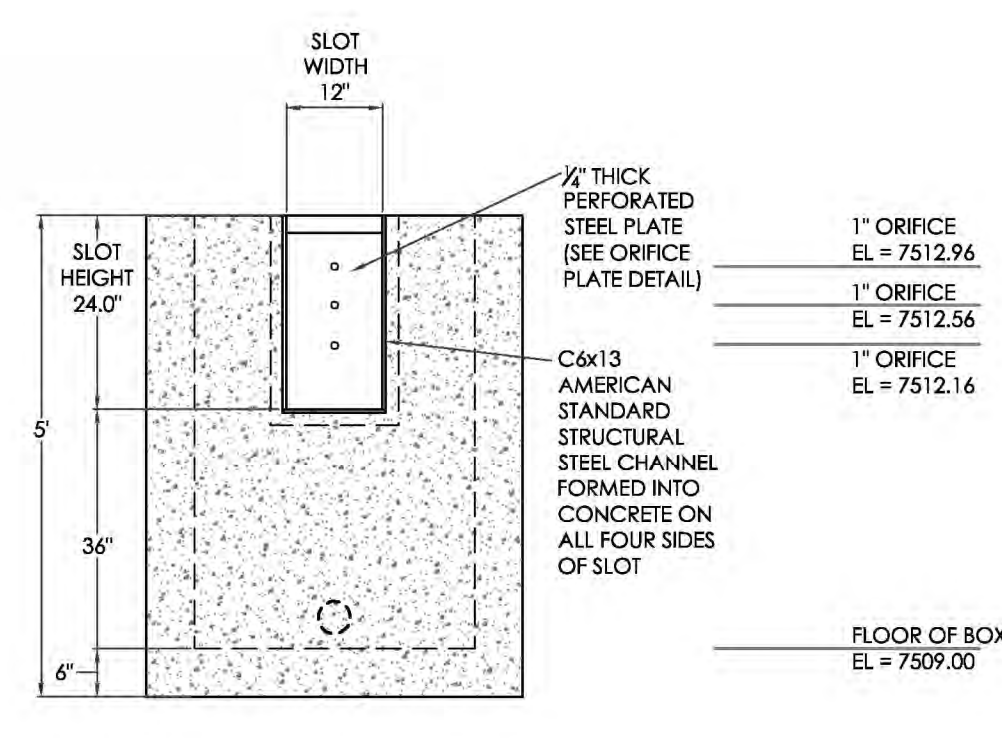
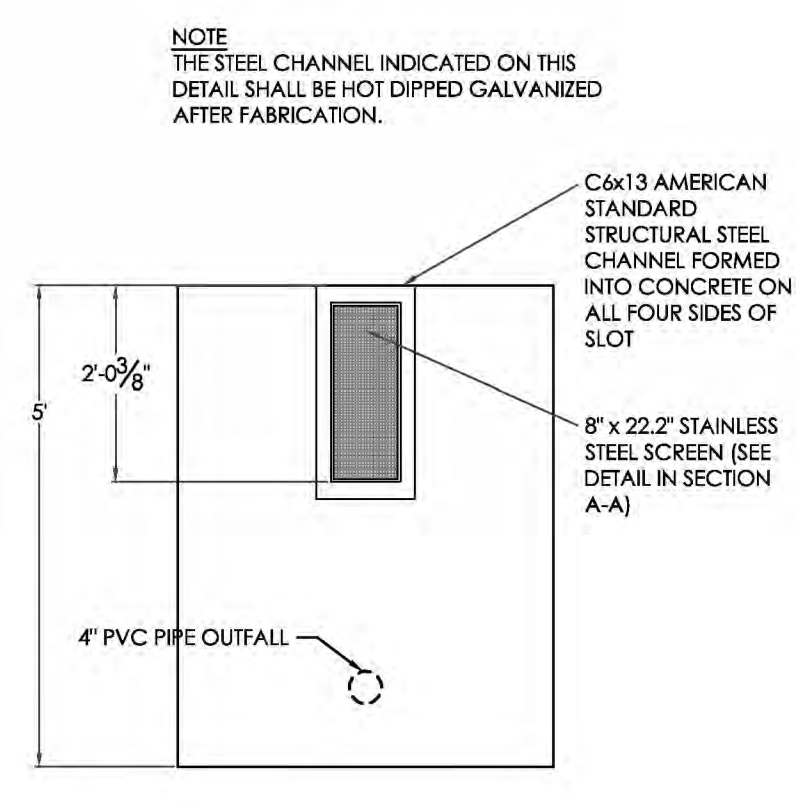
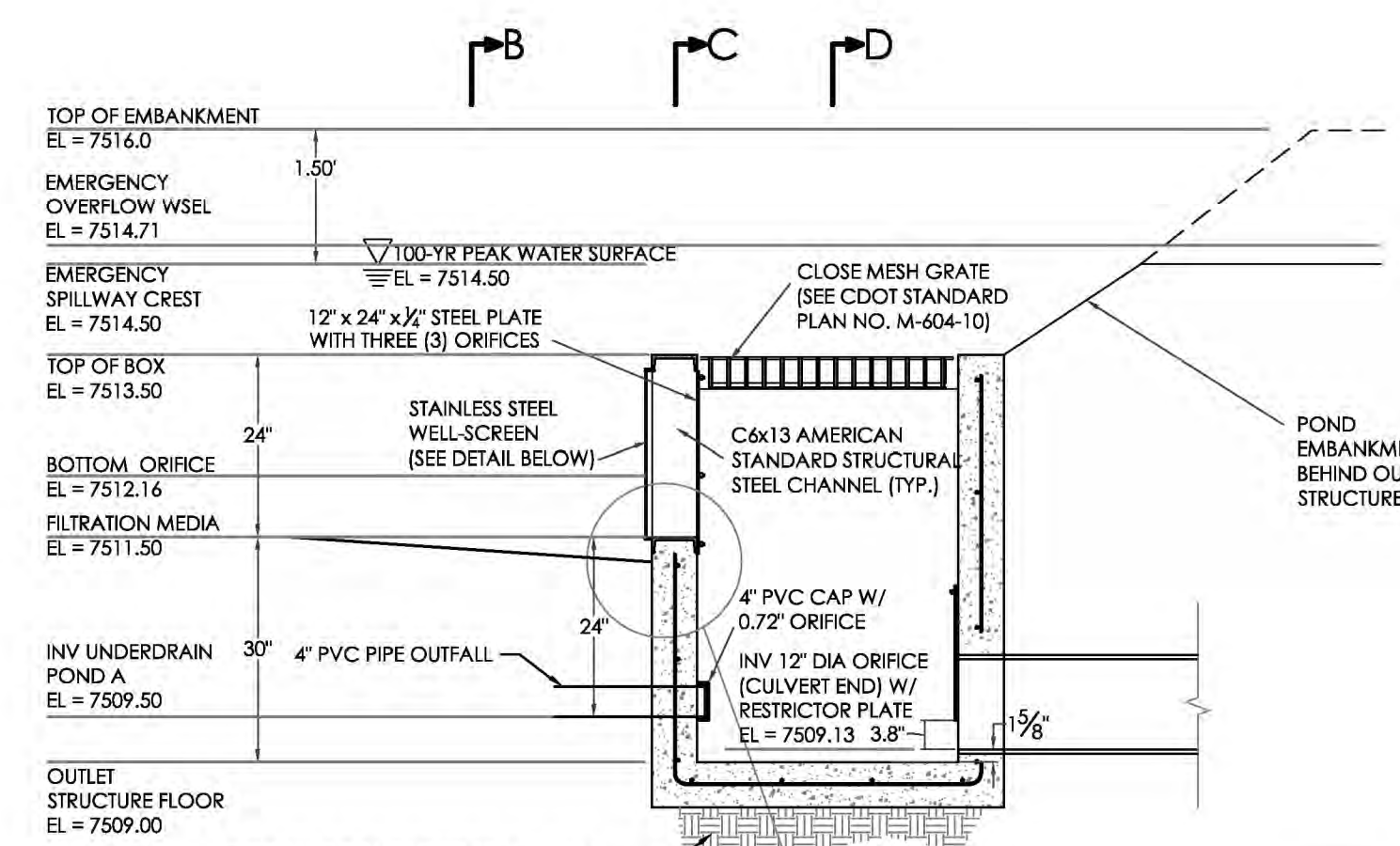
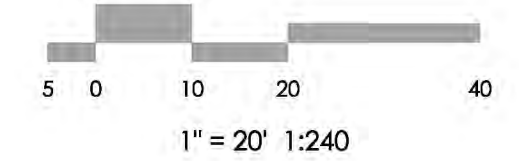
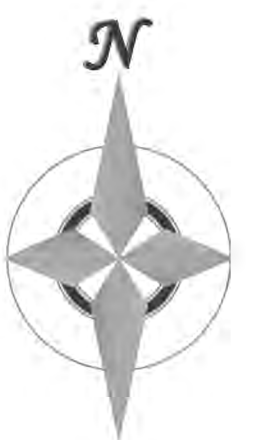
STANDARD SIEVE SIZE	% PASSING		
	GROWING MEDIA <sup>(1)(2)</sup>	CLASS B <sup>(3)</sup>	CLASS C
1-1/2"	100	100	100
3/4"	100	100	100
NO. 4	100	20-60	60-100
NO. 10	85-100	0-30	10-30
NO. 50		0-3	0-10
NO. 100		0-3	0-3
NO. 200	80-90		
NO. 250	3-17		

BASIN DATA TABLE

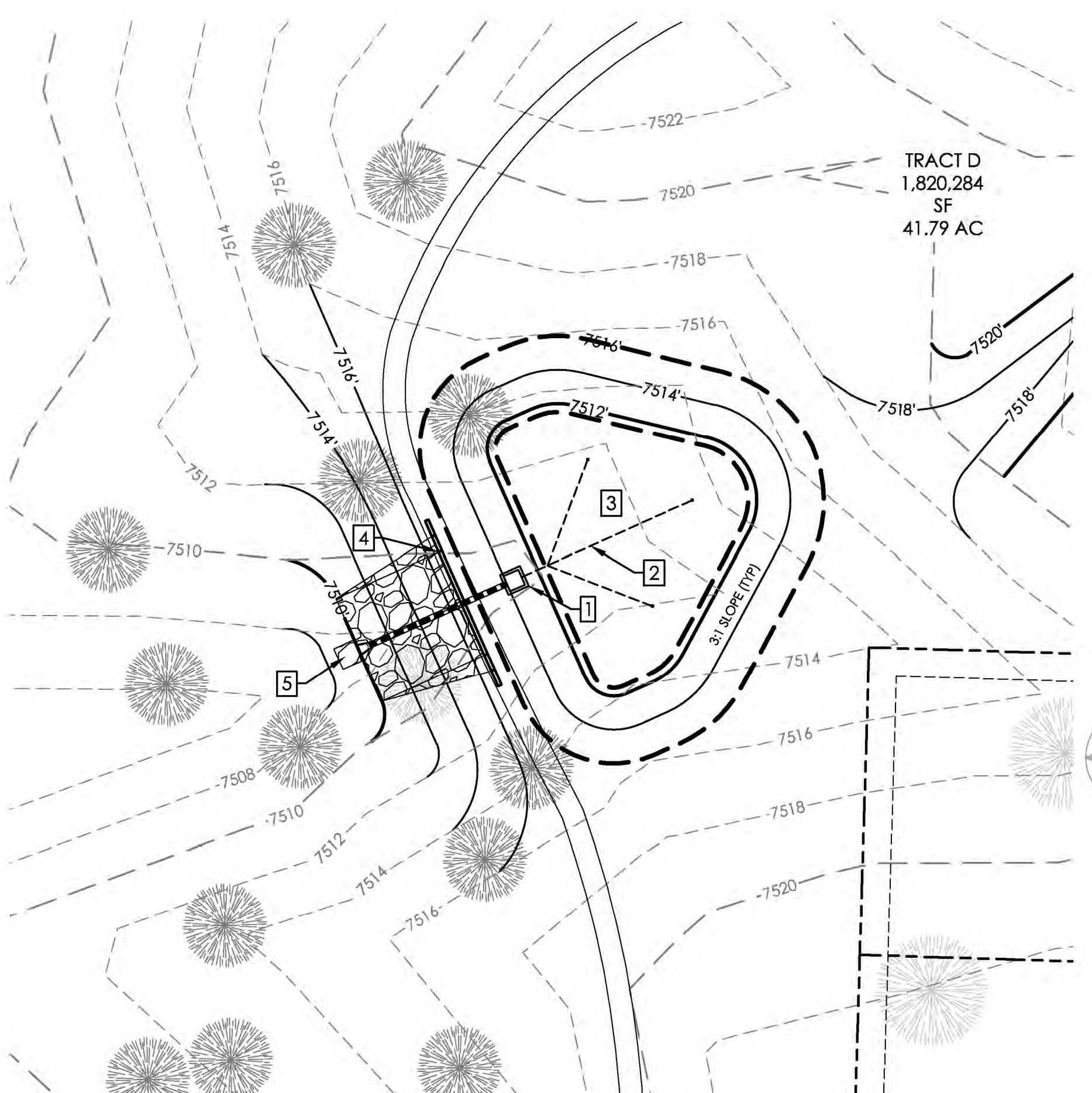
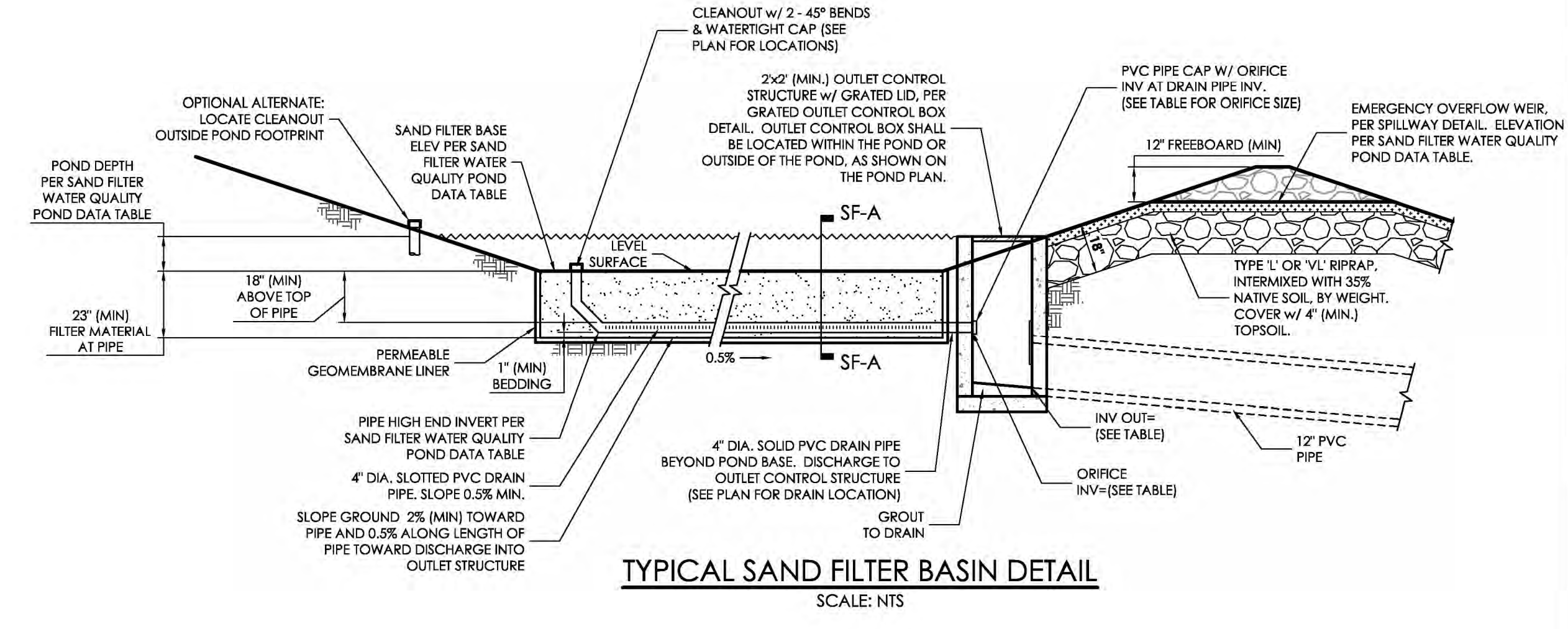
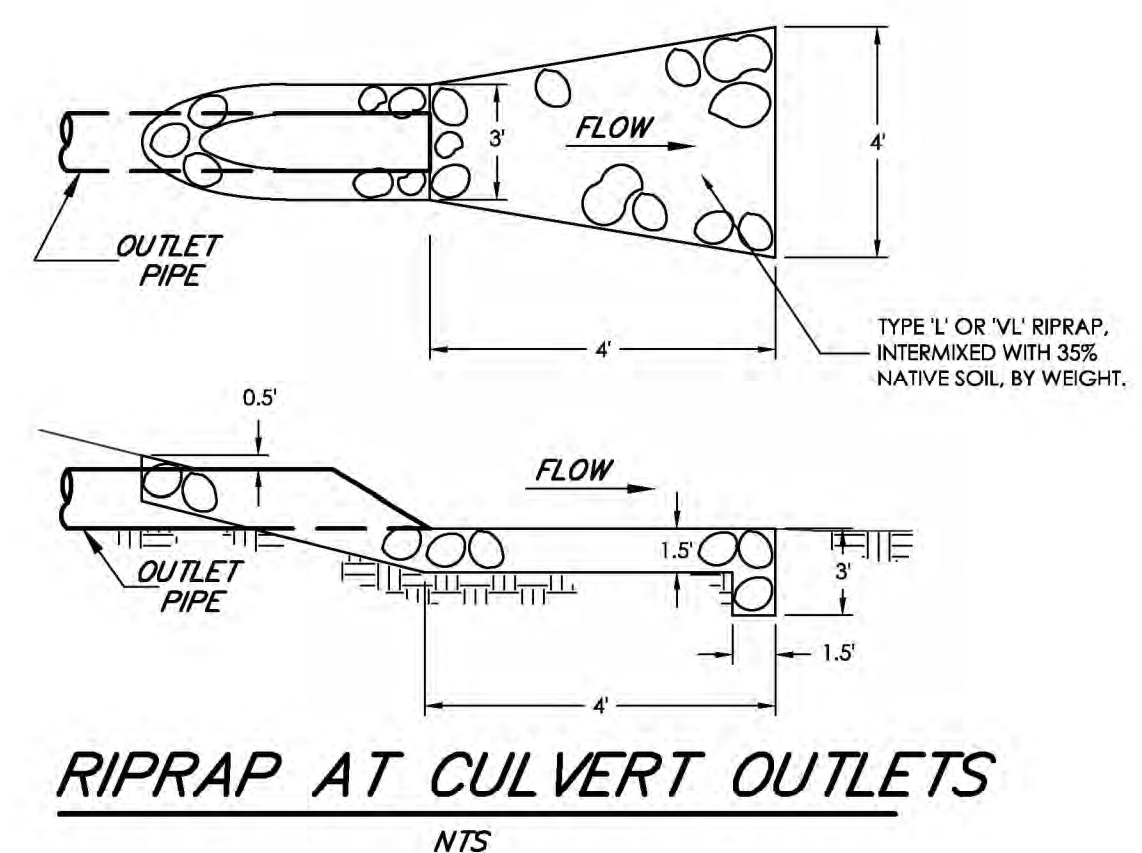
SAND FILTER BASIN	BASE AREA (SQ. FEET)	FILTER BASIN VOLUME (FT <sup>3</sup> )	FILTER BASIN BTM/INV IN ELEV	POND DEPTH (FT)	TOP OF BOX ELEVATION (W.S.)	OUTLET ORIFICE INV	OUTLET ORIFICE DIAMETER (IN)	INV OUT ELEV	RESTRICTOR PLATE HEIGHT (FT)
POND A1	1,222	5,991	7511.5	3.0	7513.5	7509.5	7.2	7509.13	3.80



BENCHMARK FOUND PROPERTY CORNER SOUTHWEST OF BENET LANE WHERE BENET LANES TURNS NORTH (APPROX. 1200 FT FROM HIGHWAY 83), ELEVATION = 7502.79'



SAND FILTER BASIN OUTLET STRUCTURE DETAILS (POND A1)  
SCALE: 1" = 2'

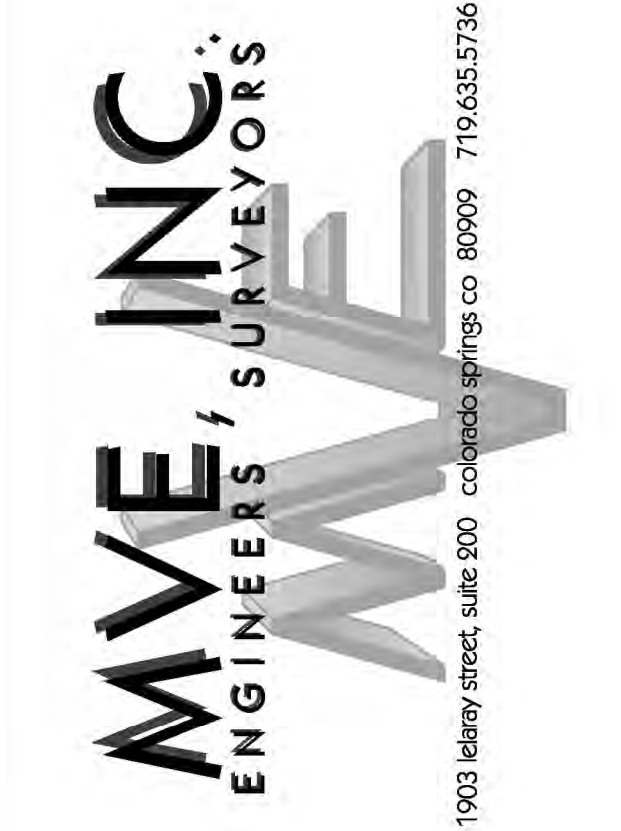


EXTENDED DETENTION SAND FILTER BASIN DETAIL (POND A1)  
SCALE: 1" = 20'

- NOTE LEGEND:
- INSTALL OUTLET STRUCTURE (SEE OUTLET STRUCTURE DETAIL)
  - INSTALL 4" PVC SLOTTED UNDERDRAIN (SEE DETAIL)
  - SAND FILTER (SEE DETAIL)
  - 20' WIDE EMERGENCY SPILLWAY (SEE SPILLWAY DETAIL)
  - INSTALL 4' X 4' TYPE VL OR L SOIL RIP-RAP PAD



AS-BUILT  
11/02/2022



DESIGNED BY  
DRAWN BY  
CHECKED BY  
AS-BUILT BY  
CHECKED BY

SANCTUARY OF PEACE  
RESIDENTIAL COMMUNITY  
GRADING & EROSION  
CONTROL PLAN  
POND PLAN (A1)

C-5 MVE PROJECT 61087  
MVE DRAWING -GEC-PD1

APRIL 28, 2020  
SHEET 5 OF 10

EPC 10/8/2020  
PUDSP-19-002



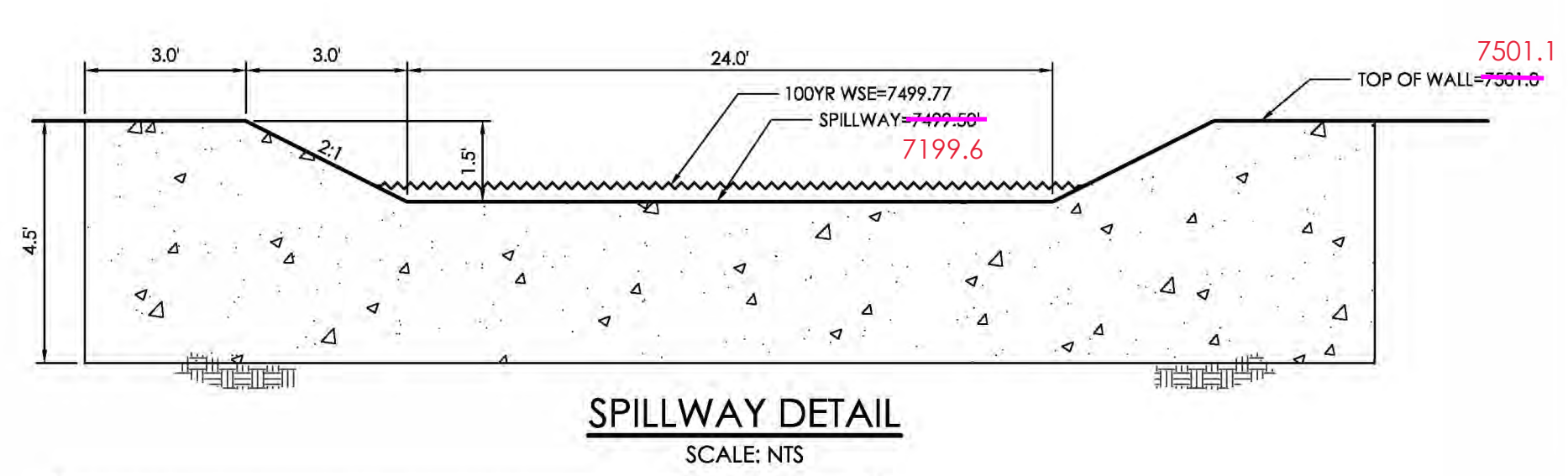
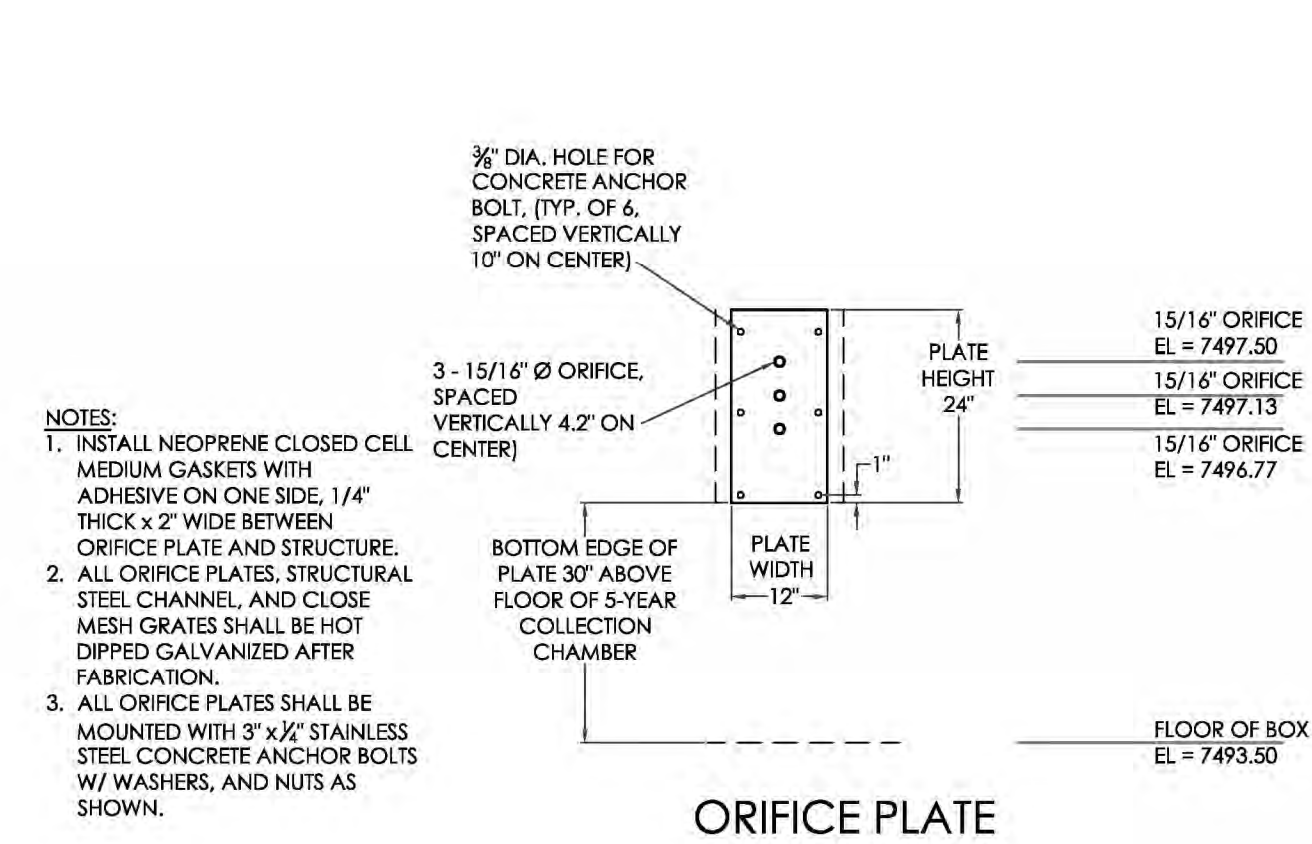
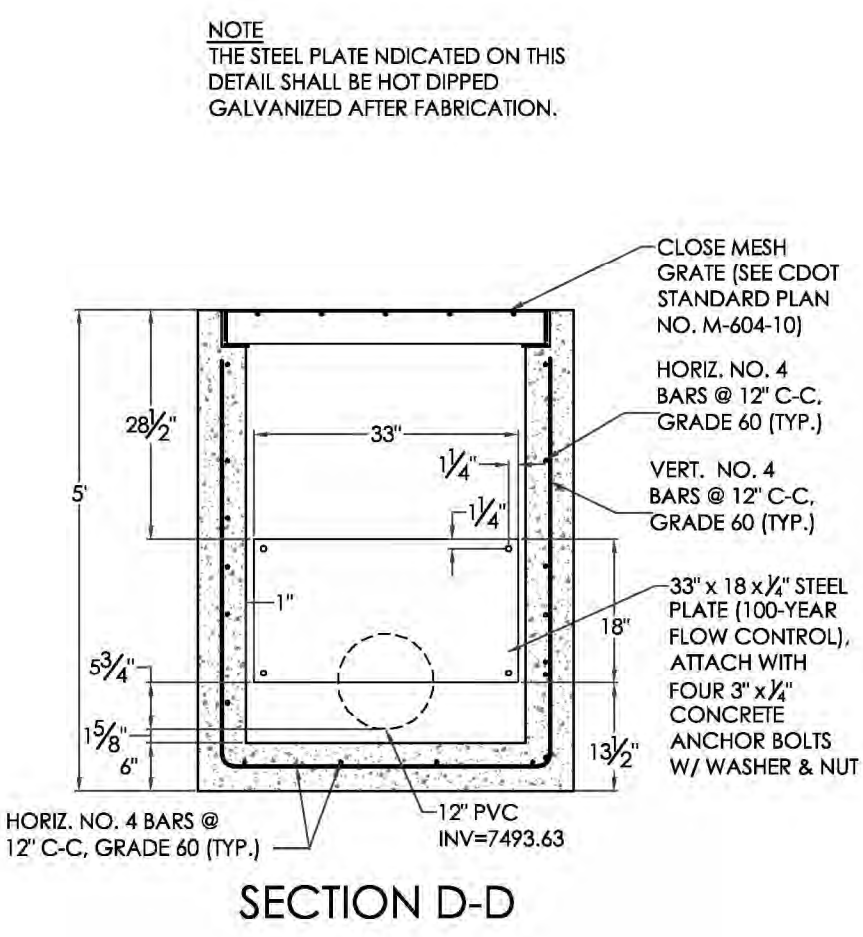
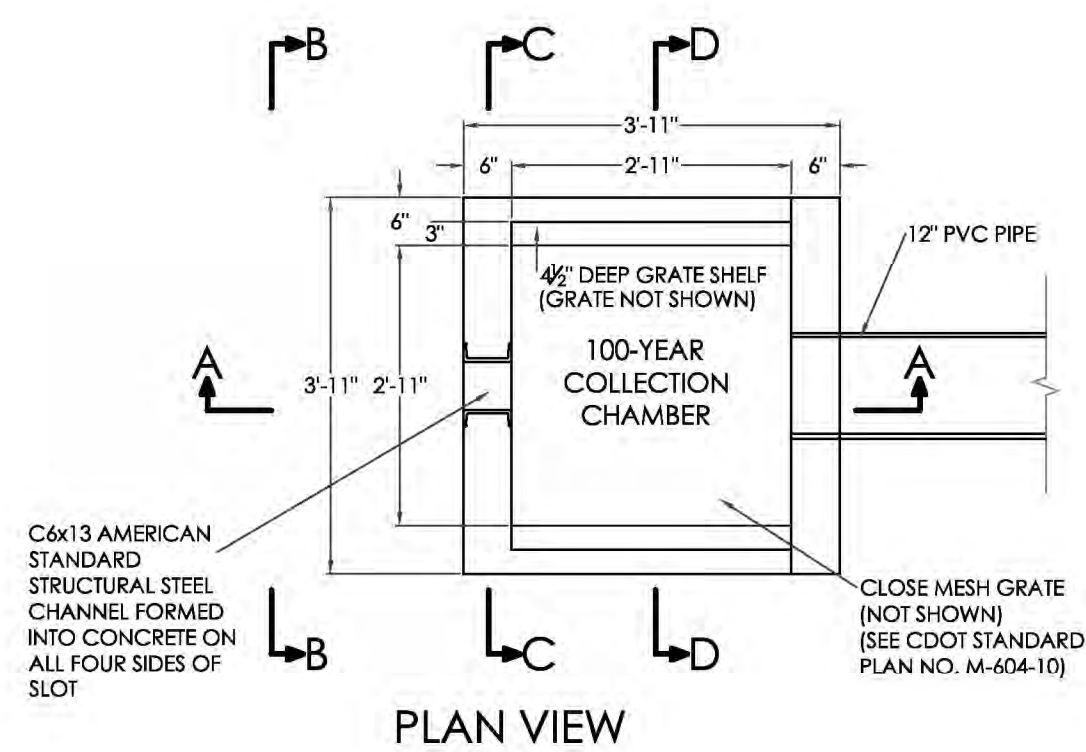
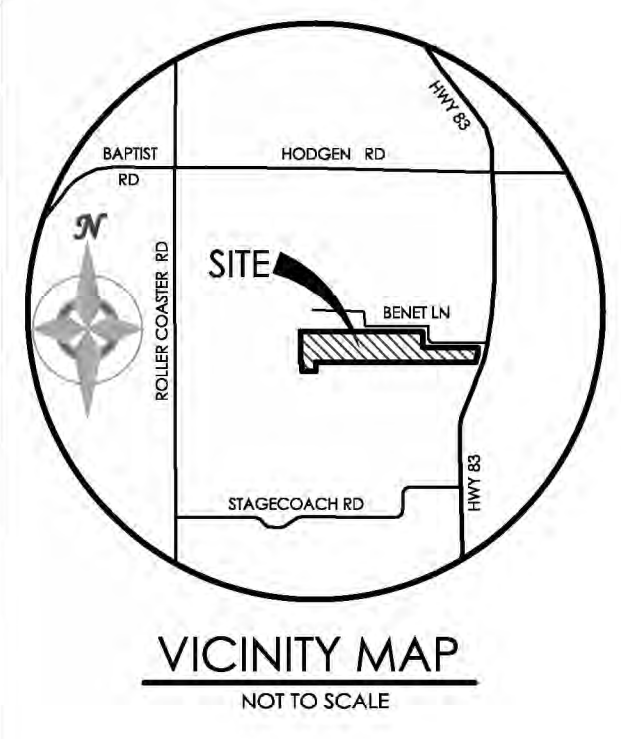
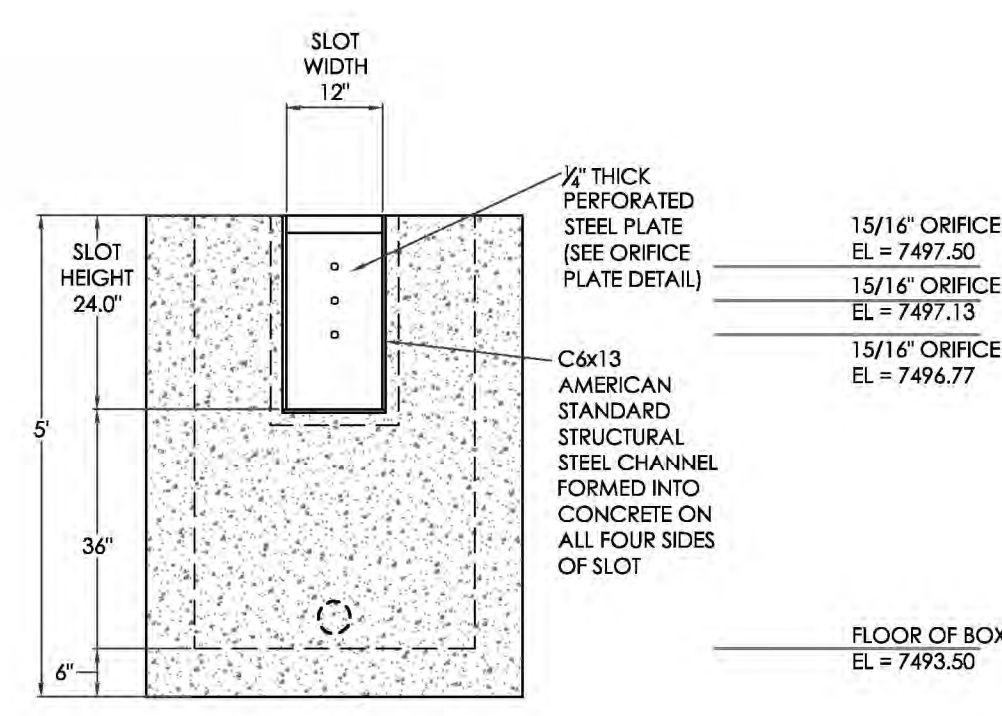
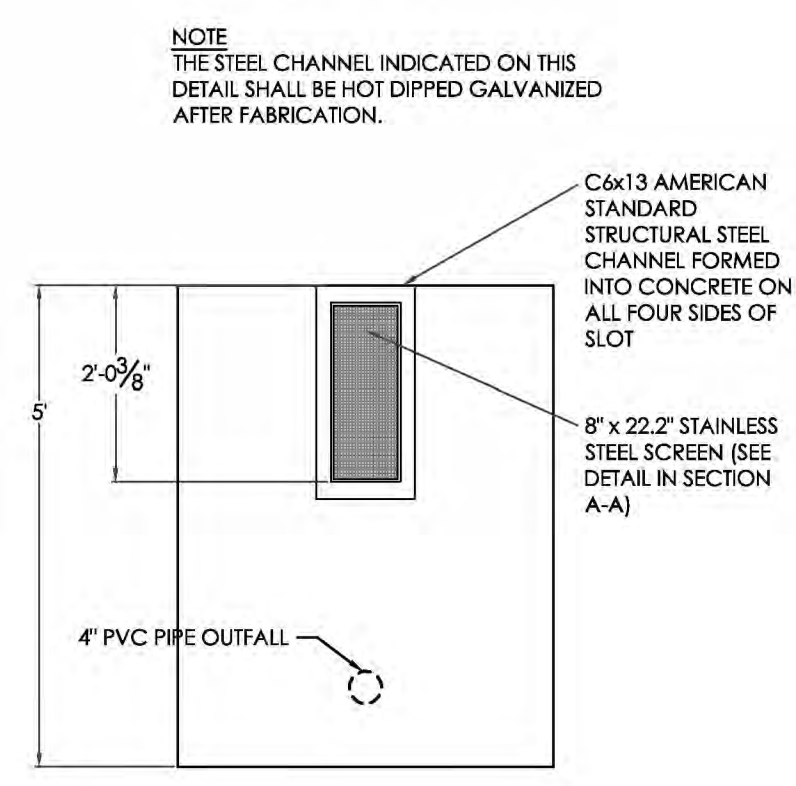
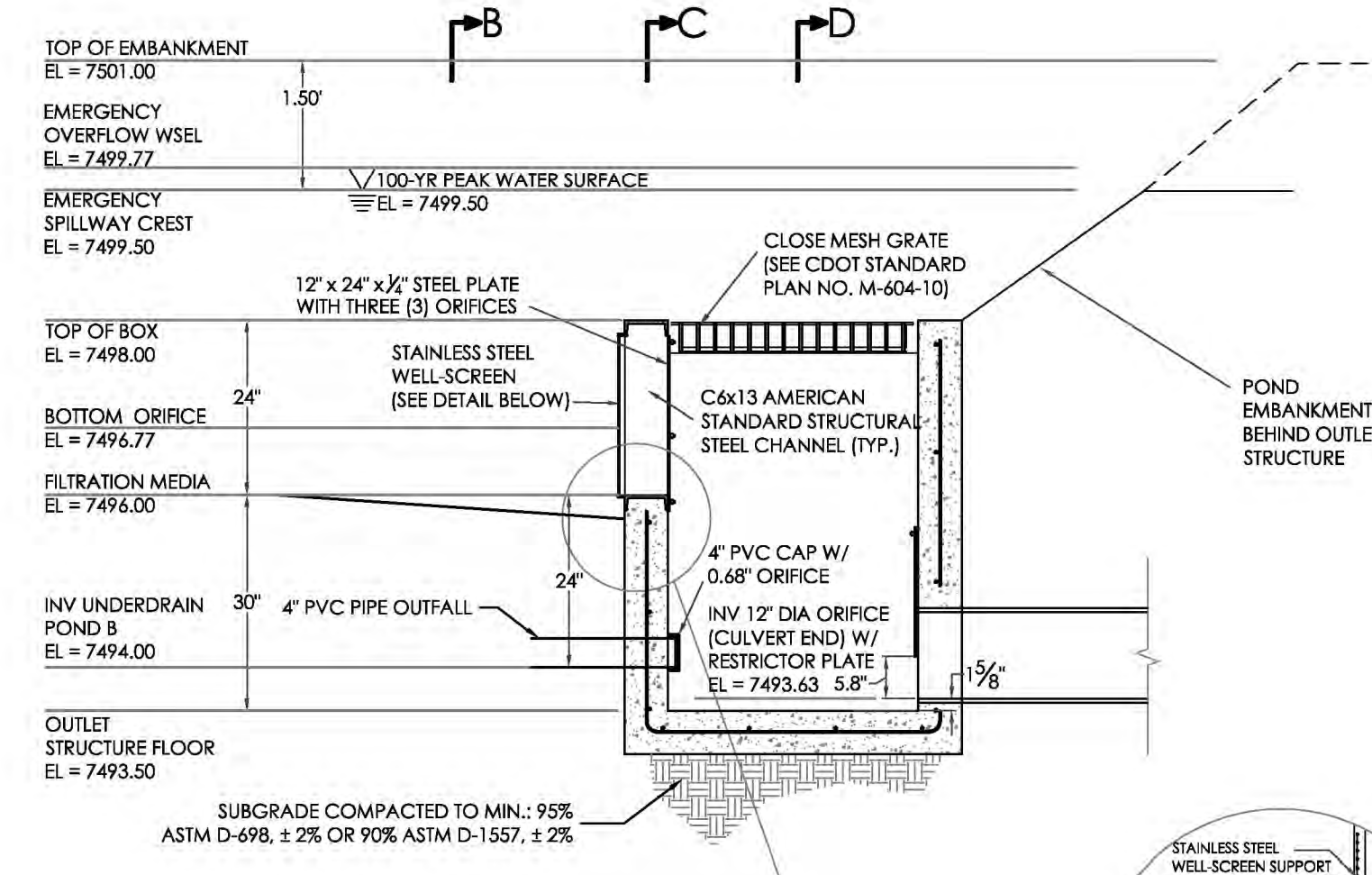


TABLE SF-2 (SLOTTED PIPE DIMENSIONS)

PIPE Ø	SLOT LENGTH	SLOT WIDTH	SLOT CENTERS	OPEN AREA (PER SF)
4"	1-1/16"	0.032"	0.413"	1.90 SQ. IN.



BENCHMARK FOUND PROPERTY CORNER SOUTHWEST OF BENET LANE WHERE BENET LANES TURNS NORTH (APPROX. 1200 FT FROM HIGHWAY 83), ELEVATION = 7502.79'



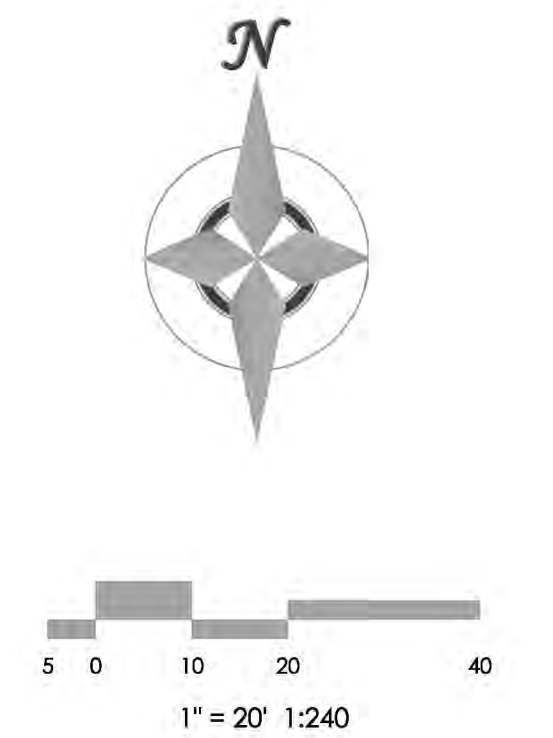
SOIL MATERIAL GRADATION TABLE

STANDARD SIEVE SIZE	GROWING MEDIA <sup>(1)(2)</sup>	% PASSING	
		CLASS B	CLASS C
1-1/2"	100	100	100
3/4"	100	100	100
NO. 4	85-100	20-60	60-100
NO. 10		0-30	10-30
NO. 50		0-3	0-10
NO. 100		0-3	0-3
NO. 200		0-3	0-3
NO. 250		0-3	0-3

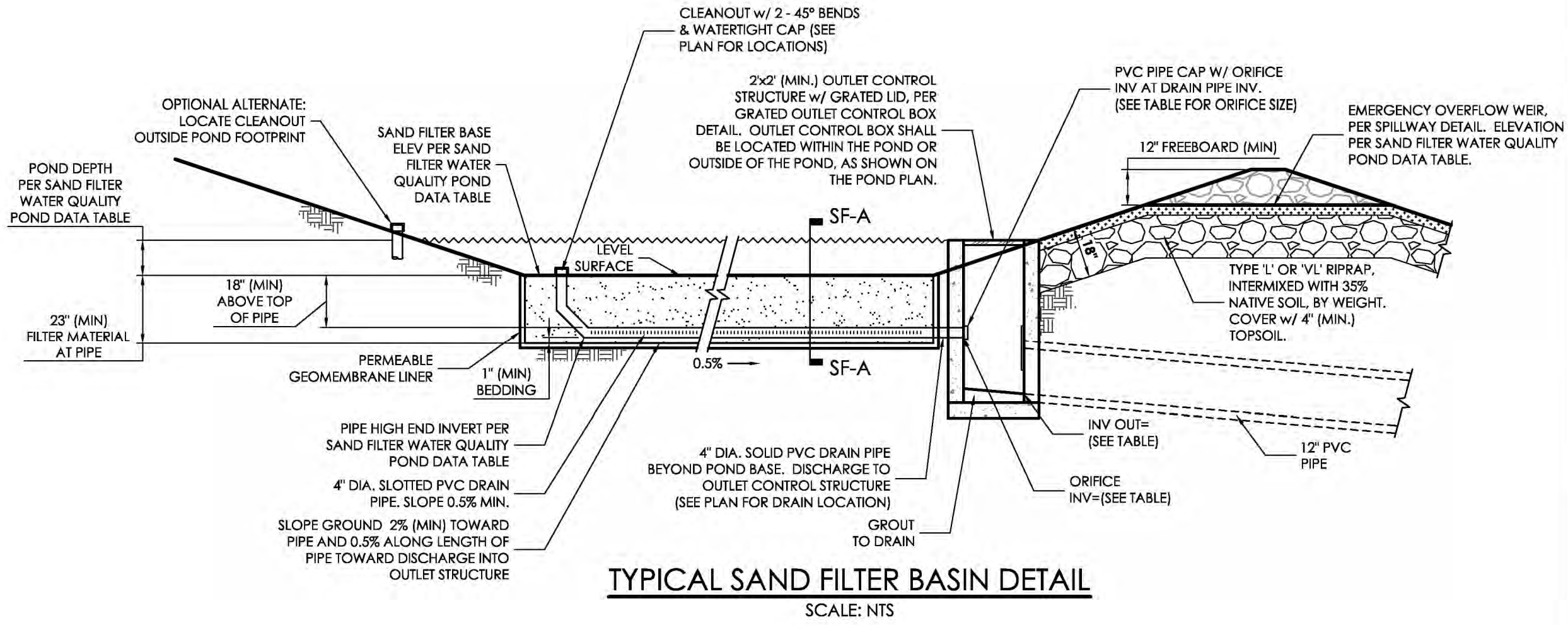
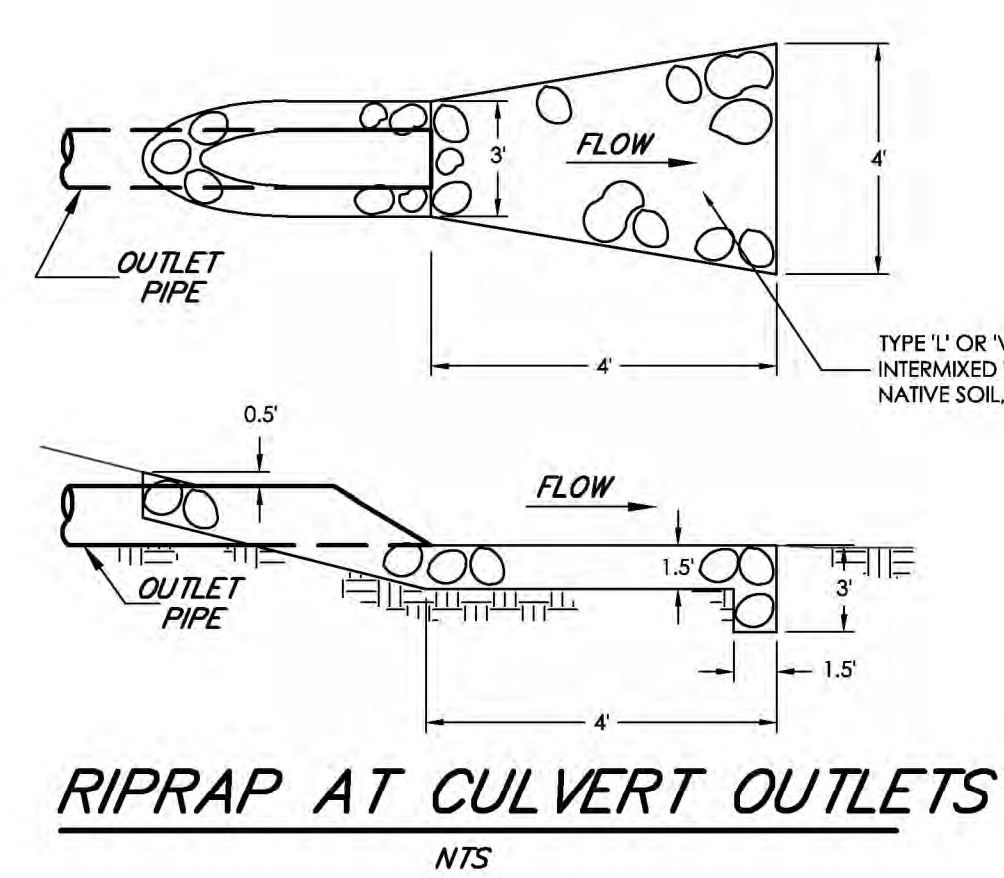
SAND FILTER SPECIFICATIONS, NOTES & REFERENCES:  
 REFERENCE URBAN DRAINAGE AND FLOOD CONTROL DISTRICT (UDFCD), URBAN STORM DRAINAGE CRITERIA MANUAL VOLUME 3, SECTION 1-4, FOR FULL SET OF SAND FILTER DETAILS AND SPECIFICATIONS AS IDENTIFIED.  
 - FILTER MATERIAL - CLASS B or CLASS C FILTER MATERIAL, PER SOIL MATERIAL GRADATION TABLE  
 - PERMEABLE GEOTEXTILE SEPARATOR FABRIC - TENCATE MIRAF 170N, OR EQUAL, PER UDFCD TABLE SF-3.  
 - CONCENTRATED INFLOW - PER CONCENTRATED INFLOW DETAIL  
 - SLOTTED PIPE - CONTECH A-2000, OR EQUAL, PER PIPE SPECIFICATION TABLE

BASIN DATA TABLE

SAND FILTER BASIN	BASE AREA (SQ. FEET)	FILTER BASIN VOLUME (FT <sup>3</sup> )	FILTER BASIN BTM/INV IN ELEV	POND DEPTH (FT)	TOP OF BOX ELEVATION (W.S.)	OUTLET ORIFICE INV	OUTLET ORIFICE DIAMETER (IN)	INV OUT ELEV	RESTRICTOR PLATE HEIGHT (FT)
POND C1	1,843	10,563	7496.0	3.5	7498.0	7494.0	1"	7493.63	5.80'

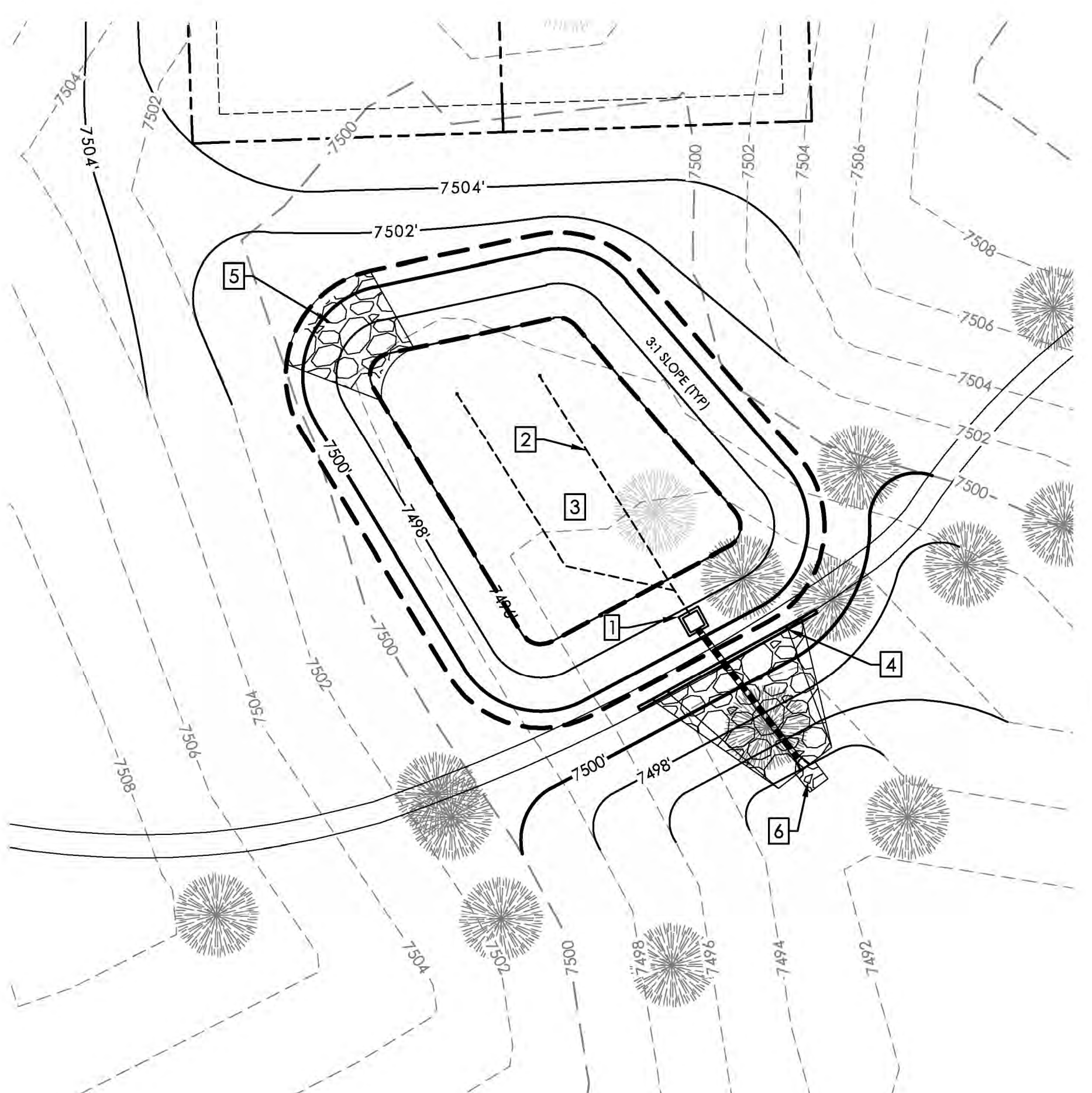


SAND FILTER BASIN OUTLET STRUCTURE DETAILS (POND C1)  
 SCALE: 1" = 2'



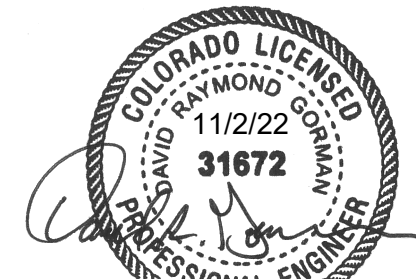
EXTENDED DETENTION SAND FILTER BASIN DETAIL (POND C1)  
 SCALE: 1" = 20'

- NOTE LEGEND:
- INSTALL OUTLET STRUCTURE (SEE OUTLET STRUCTURE DETAIL)
  - INSTALL 4" PVC SLOTTED UNDERDRAIN (SEE DETAIL)
  - SAIND FILTER (SEE DETAIL).
  - 24" WIDE EMERGENCY SPILLWAY (SEE SPILLWAY DETAIL)
  - INSTALL 16" WIDE TYPE VL SOIL RIPRAP 18" THICK
  - INSTALL 4' X 4' TYPE VL OR L SOIL RIP-RAP PAD



DESIGNED BY  
 DRAWN BY  
 CHECKED BY  
 AS-BUILTS BY  
 CHECKED BY

SANCTUARY OF PEACE  
 RESIDENTIAL COMMUNITY  
 GRADING & EROSION  
 CONTROL PLAN  
 POND PLAN (C1)



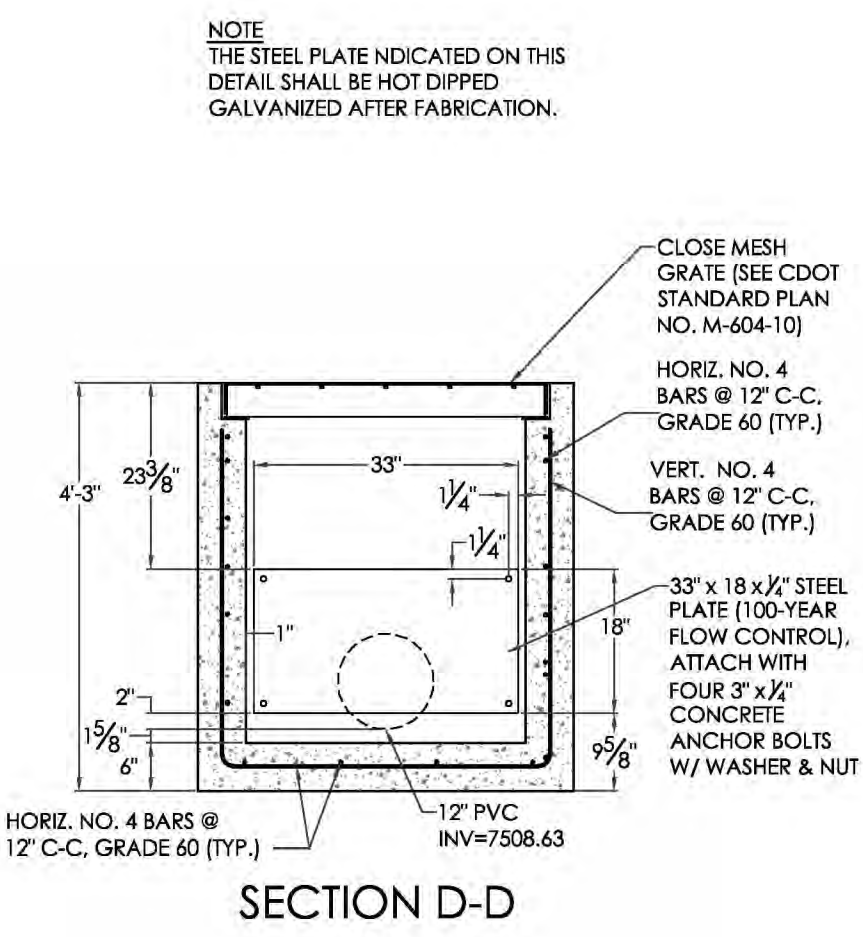
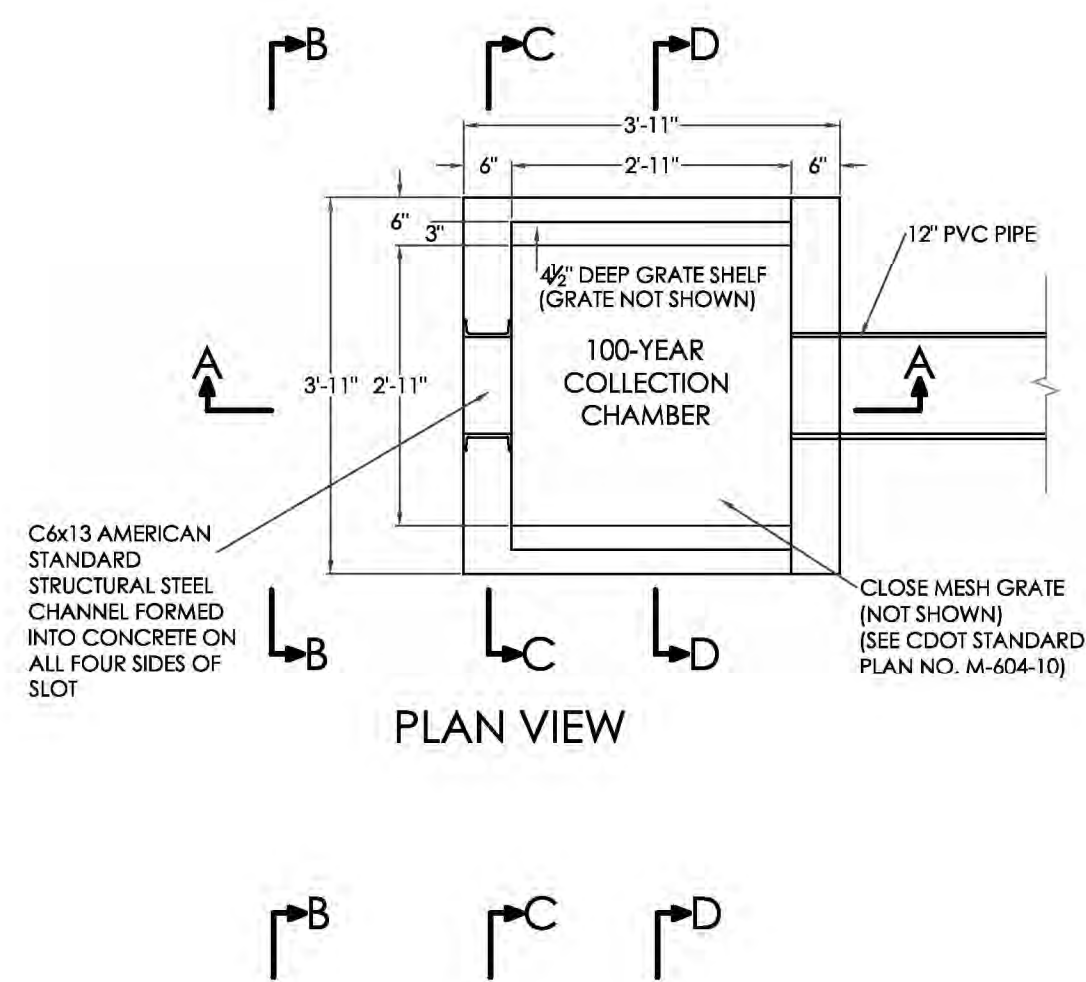
AS-BUILT  
 11/02/2022

EPC 10/8/2020  
 PUDSP-19-002

C-6 MVE PROJECT 61087  
 MVE DRAWING -GEC-PD2

APRIL 28, 2020  
 SHEET 6 OF 10





NOTES:  
 1. INSTALL NEOPRENE CLOSED CELL MEDIUM CASSETS WITH ADHESIVE ON ONE SIDE. 1/4" THICK x 2" WIDE BETWEEN ORIFICE PLATE AND STRUCTURE.  
 2. ALL ORIFICE PLATES, STRUCTURAL STEEL CHANNEL, AND CLOSE MESH GRATES SHALL BE HOT DIPPED GALVANIZED AFTER FABRICATION.  
 3. ALL ORIFICE PLATES SHALL BE MOUNTED WITH 3/8" x 1/2" STAINLESS STEEL CONCRETE ANCHOR BOLTS W/ WASHERS, AND NUTS AS SHOWN.

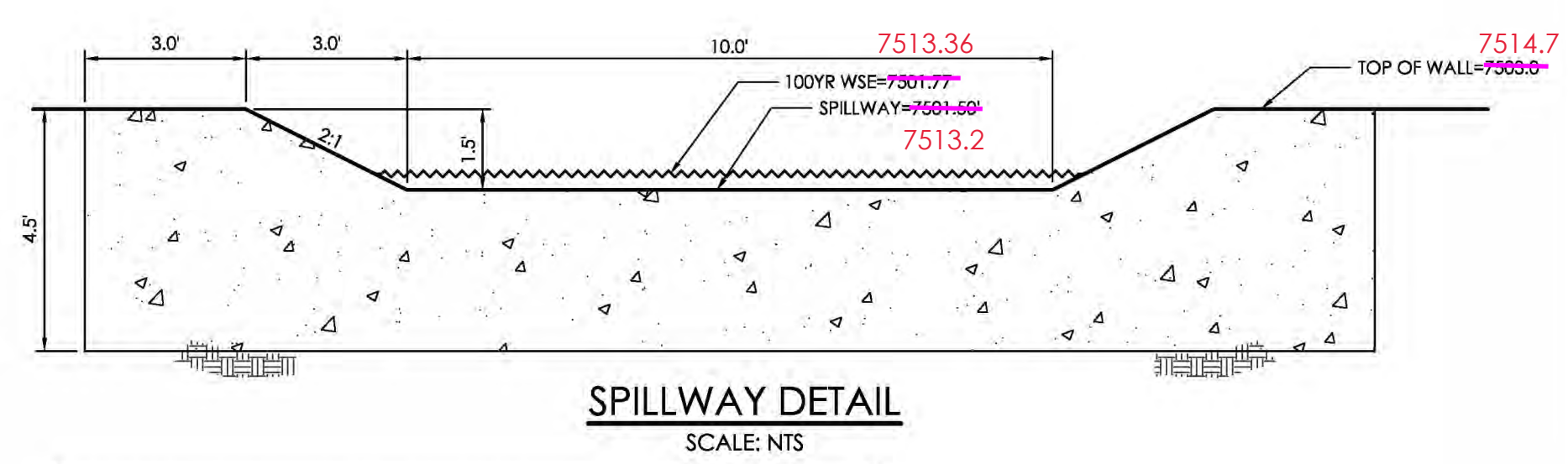
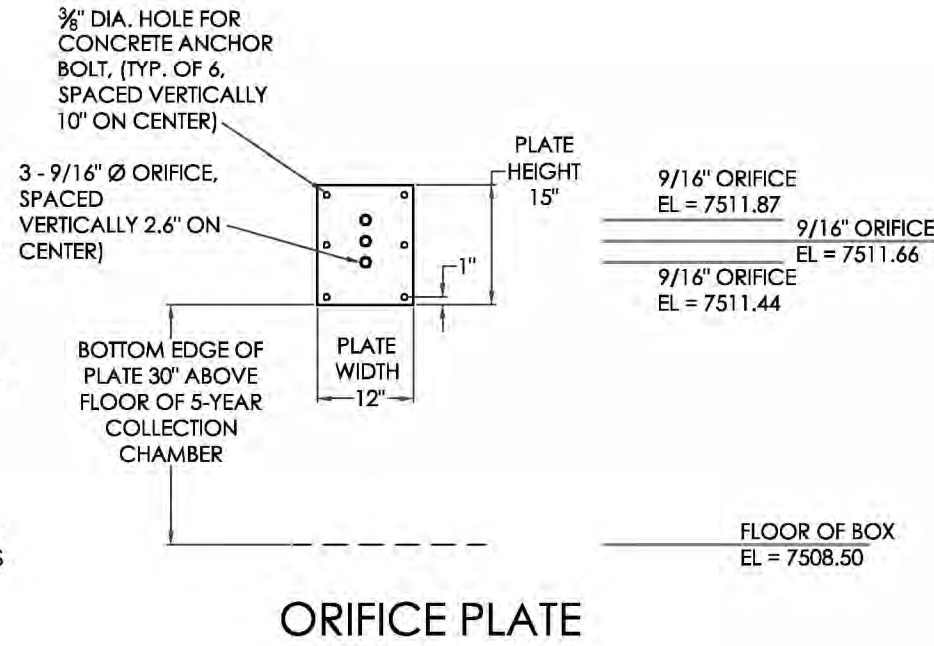


TABLE SF-2 (SLOTTED PIPE DIMENSIONS)

PIPE Ø	SLOT LENGTH	SLOT WIDTH	SLOT CENTERS	OPEN AREA (PER SF)
4"	1-1/16"	0.032"	0.413"	1.90 SQ. IN.

SOIL MATERIAL GRADATION TABLE  
(SOURCE: USDCD MODIFICATION (R3) TABLE B-1 & SAND FILTER BASIN (SF) TABLE SF-1)

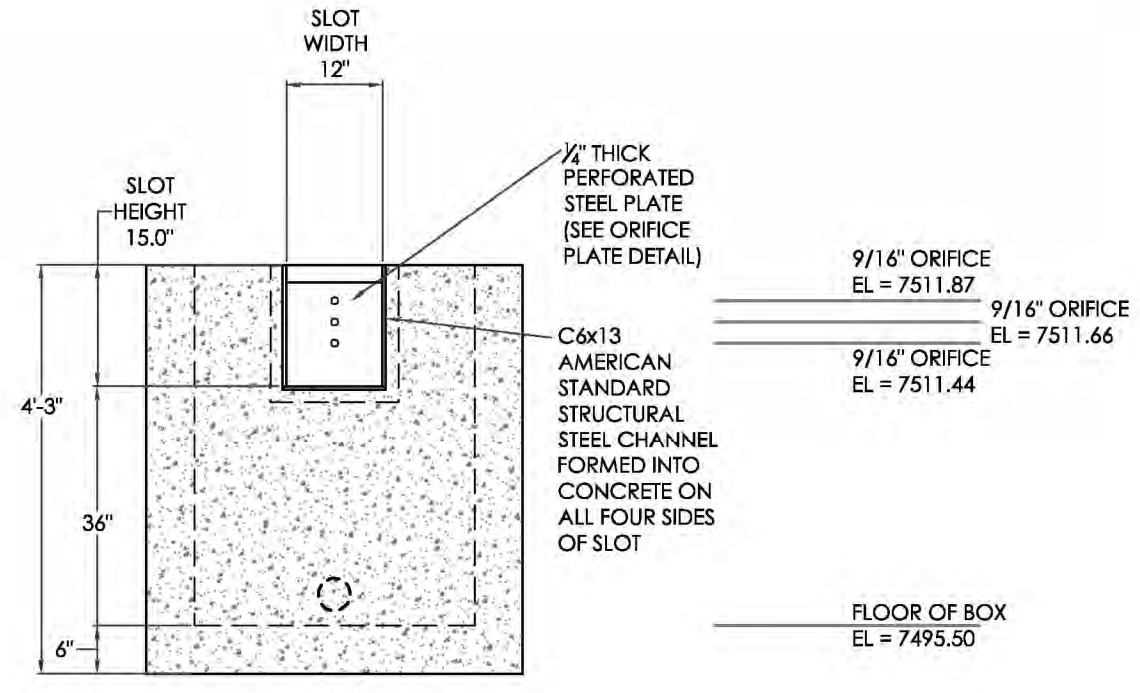
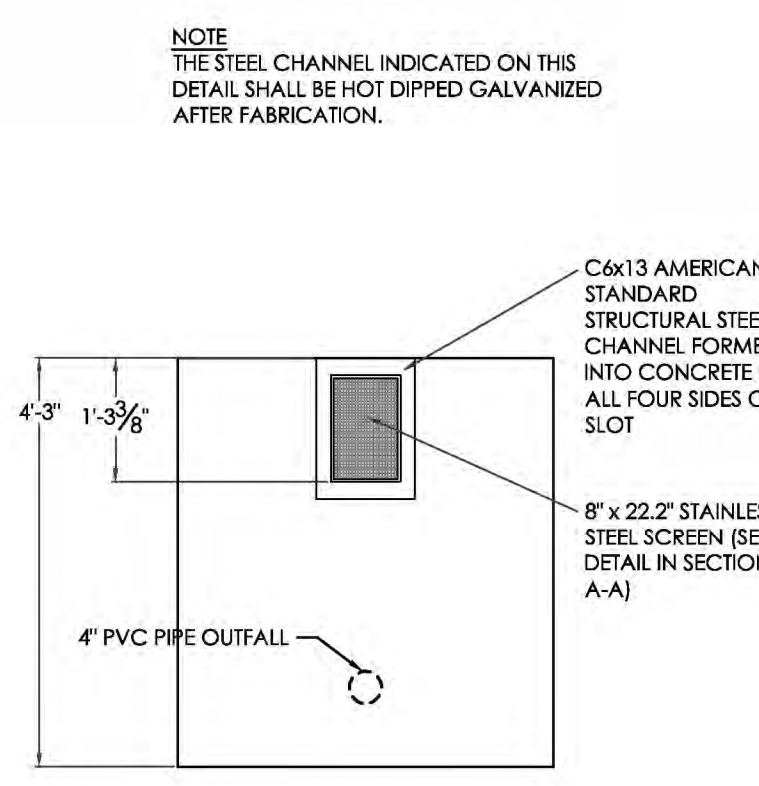
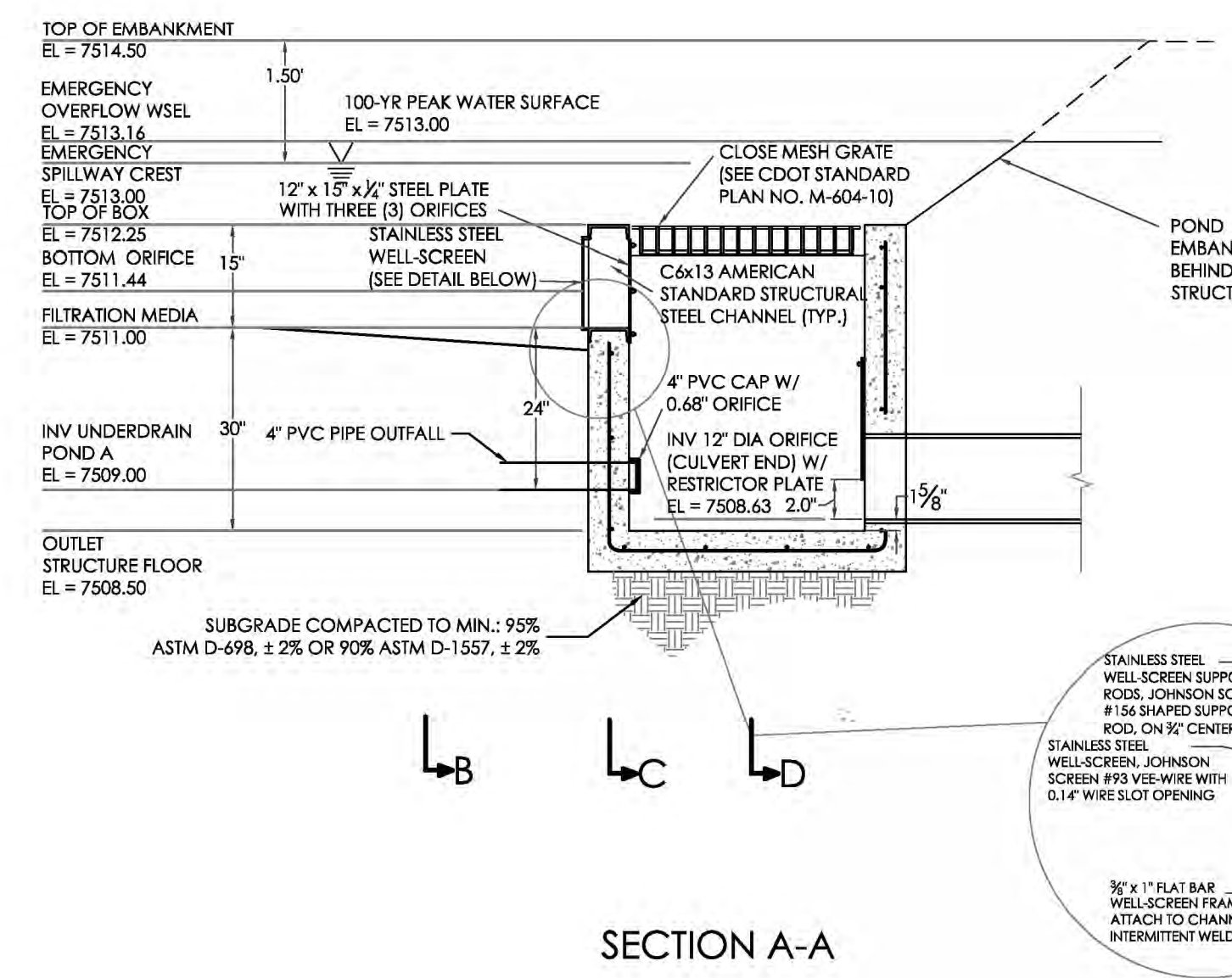
STANDARD SIEVE SIZE	% PASSING	FILTER MATERIAL <sup>(3)</sup>	
		GROWING MEDIA <sup>(1)(2)</sup>	CLASS C
1-1/2"	100	100	100
3/4"	100	20-60	60-100
NO. 4	85-100	0-30	10-30
NO. 10	80-90	0-3	0-10
NO. 20	3-17	0-3	0-3

<sup>(1)</sup> RAIN GARDEN ONLY  
<sup>(2)</sup> LESS THAN 1.5% ORGANIC MATERIAL  
<sup>(3)</sup> APPLIES TO BOTH SAND FILTER BASIN AND RAIN GARDEN

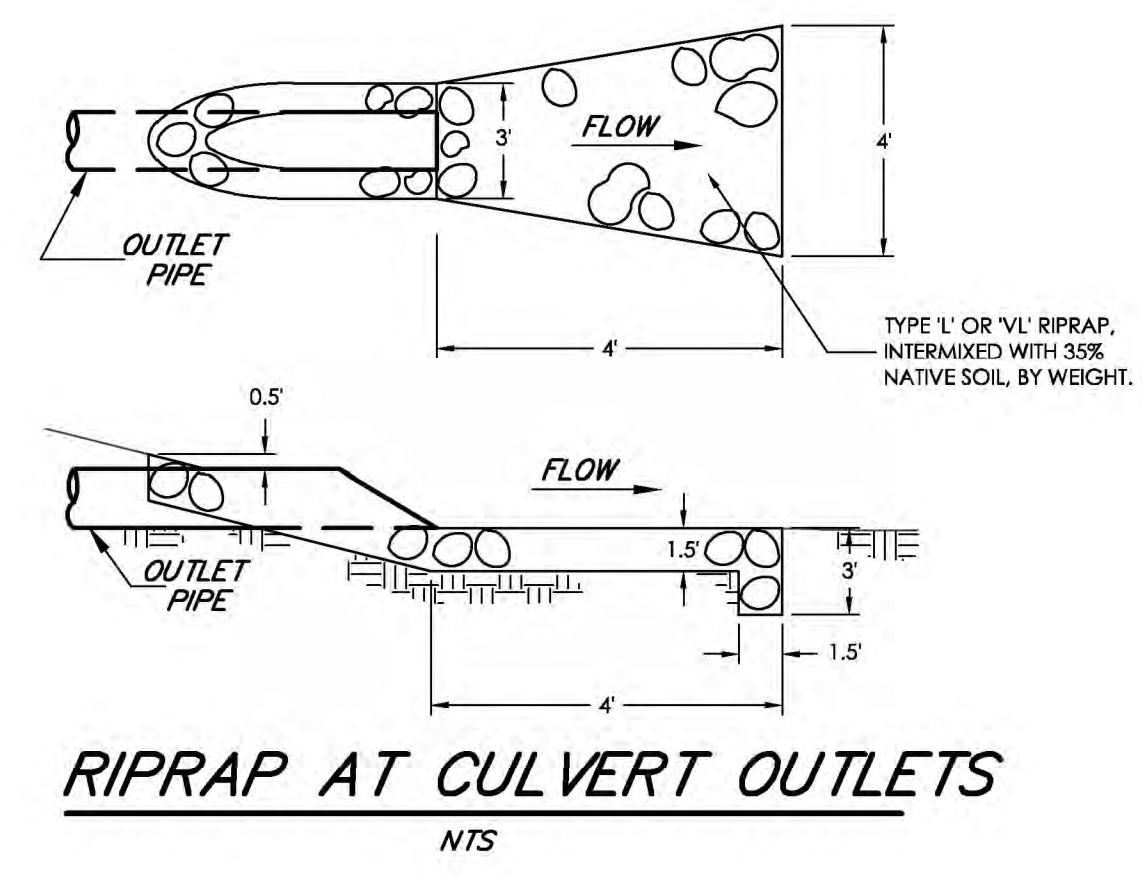
**SAND FILTER SPECIFICATIONS, NOTES & REFERENCES:**  
 REFERENCE URBAN DRAINAGE AND FLOOD CONTROL DISTRICT (UDFCD), URBAN STORM DRAINAGE CRITERIA MANUAL VOLUME 3, SECTION 1-4, FOR FULL SET OF SAND FILTER DETAILS AND SPECIFICATIONS AS IDENTIFIED.  
 - FILTER MATERIAL - CLASS B or CLASS C FILTER MATERIAL, PER SOIL MATERIAL GRADATION TABLE  
 - PERMEABLE GEOTEXTILE SEPARATOR FABRIC - TENCATE MIRAF 170N, OR EQUAL, PER UDFCD TABLE SF-3.  
 - CONCENTRATED INFLOW - PER CONCENTRATED INFLOW DETAIL  
 - SLOTTED PIPE - CONTECH A-2000, OR EQUAL, PER PIPE SPECIFICATION TABLE

BASIN DATA TABLE

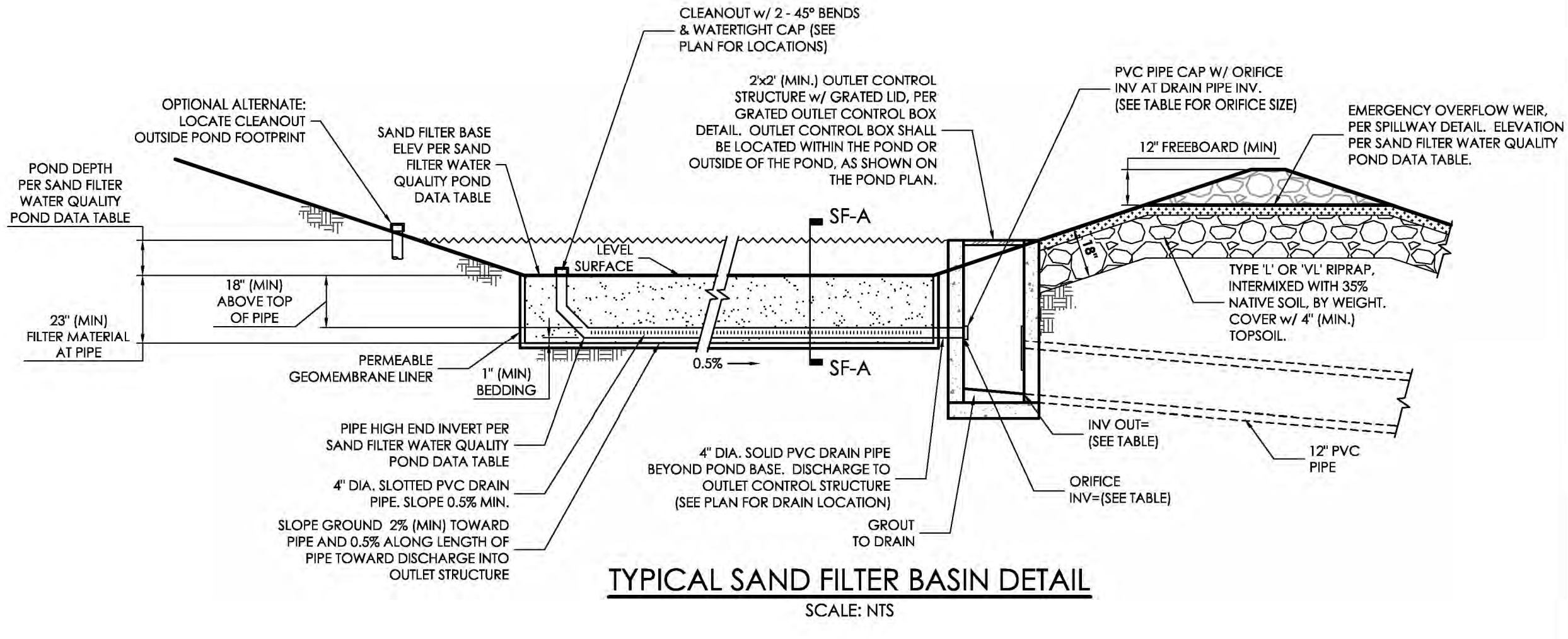
SAND FILTER BASIN	BASE AREA (SQ. FEET)	FILTER BASIN VOLUME (FT <sup>3</sup> )	FILTER BASIN BTM/INV IN ELEV	POND DEPTH (FT)	TOP OF BOX ELEVATION (W.S.)	OUTLET ORIFICE INV	OUTLET ORIFICE DIAMETER (IN)	INV OUT ELEV	RESTRICTOR PLATE HEIGHT (FT)
POND C2	546	1,783	7511.0	2.0	7512.25	7509.0	38"	7509.63	2.0'



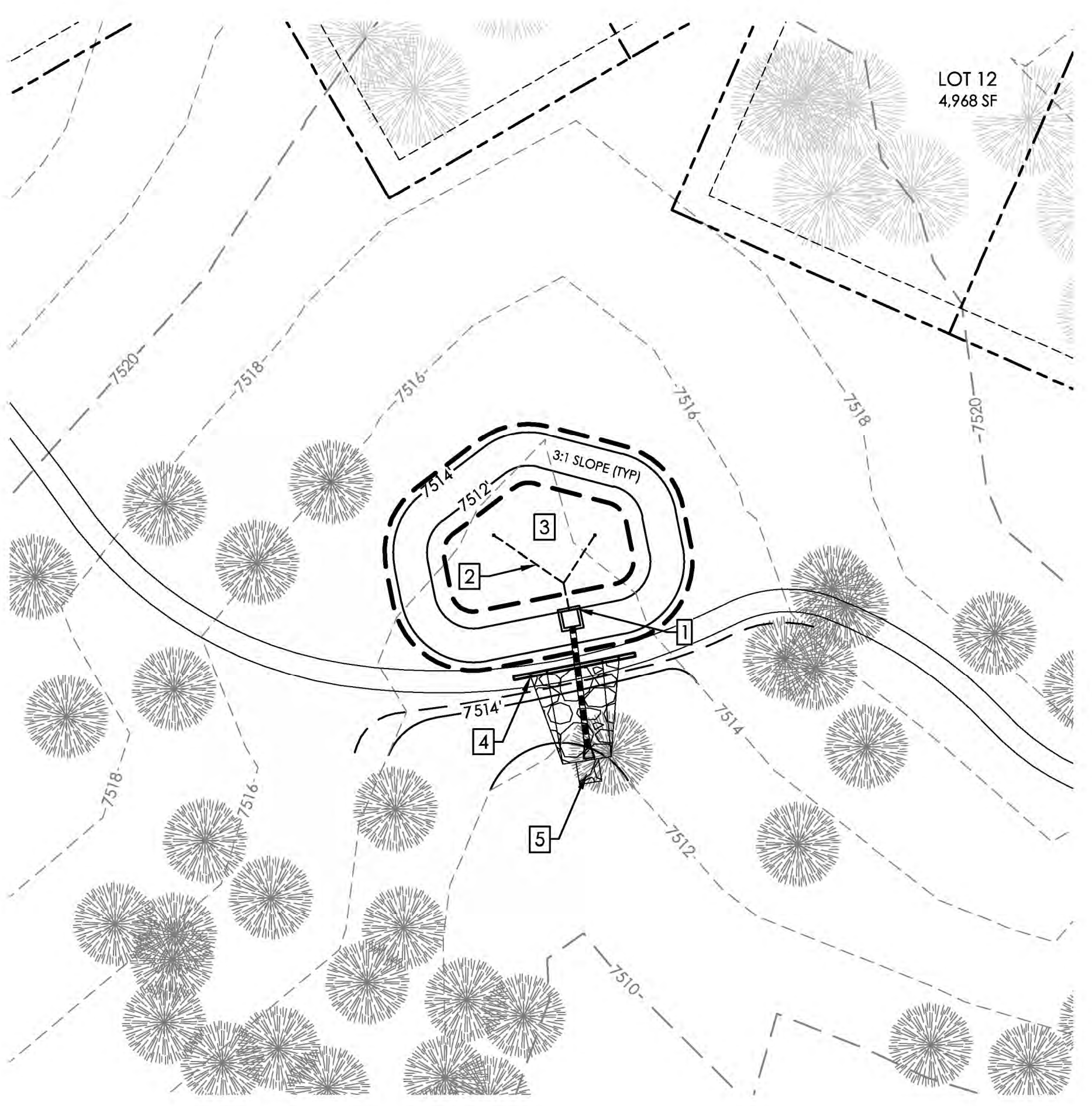
SAND FILTER BASIN OUTLET STRUCTURE DETAILS (POND C2)  
 SCALE: 1" = 2'



RIPRAP AT CULVERT OUTLETS  
 NTS

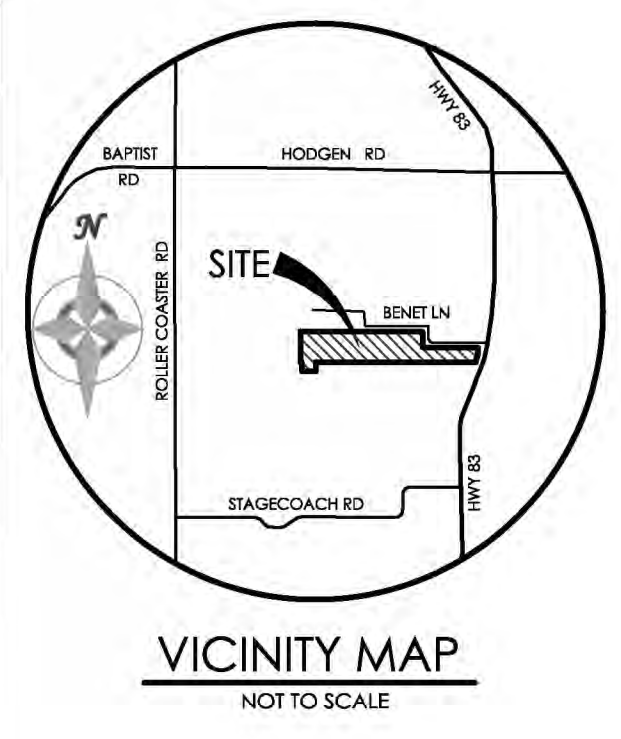


TYPICAL SAND FILTER BASIN DETAIL  
 SCALE: NTS



EXTENDED DETENTION SAND FILTER BASIN DETAIL (POND C2)  
 SCALE: 1" = 20'

- NOTE LEGEND:
1. INSTALL OUTLET STRUCTURE (SEE OUTLET STRUCTURE DETAIL)
  2. INSTALL 4" PVC SLOTTED UNDERDRAIN (SEE DETAIL)
  3. SAND FILTER (SEE DETAIL).
  4. 20' WIDE EMERGENCY SPILLWAY (SEE SPILLWAY DETAIL)
  5. INSTALL 4' X 4' TYPE VL OR L SOIL RIP-RAP PAD



BENCHMARK  
 FOUND PROPERTY CORNER SOUTHWEST OF BENET LANE WHERE BENET LANES TURNS NORTH (APPROX. 1200 FT FROM HIGHWAY 83), ELEVATION = 7502.79'



**MVE INC.**  
 ENGINEERS & SURVEYORS  
 1903 Liberty Street, Suite 200, Colorado Springs, CO 80909 719.635.5176

REVISIONS

DESIGNED BY \_\_\_\_\_  
 DRAWN BY \_\_\_\_\_  
 CHECKED BY \_\_\_\_\_  
 AS-BUILT BY \_\_\_\_\_  
 CHECKED BY \_\_\_\_\_

SANCTUARY OF PEACE  
 RESIDENTIAL COMMUNITY  
 GRADING & EROSION  
 CONTROL PLAN  
 POND PLAN (C2)



AS-BUILT

EPC 10/8/2020  
 PUDSP-19-002

C-7 MVE PROJECT 61087  
 MVE DRAWING -GEC-PD3

APRIL 28, 2020  
 SHEET 7 OF 10