

NOTICE OF PUBLIC HEARING(S)

*Mailed/Copied
9/17/21*

This notice provides options to access to the Planning Commission and Board of County Commissioners' hearings on the following Quasi-Judicial land use matter. **The item is scheduled for the Thursday, October 7, 2021 Planning Commission beginning at 9:00 a.m. located in the Second Floor Hearing Room of the Pikes Peak Regional Development Center, 2880 International Circle, Colorado Springs and the Tuesday, October 26, 2021 Board of County Commissioners' hearing beginning at 9:00 a.m. located in the Centennial Hall Hearing Room located at 200 S. Cascade Avenue, Colorado Springs.**

SF-20-025

HOWSER

**FINAL PLAT
SPACE VILLAGE APARTMENTS FILING NO. 1**

A request by Bridle Dale, LLC, for approval of a final plat to create one (1) 0.63-acre commercial lot. The property is zoned CC (Commercial Community) and is located on the south side of Space Village Avenue, approximately 785 feet east of the intersection of Space Village Avenue and Peterson Boulevard and is within Section 17, Township 14 South, Range 65 West of the 6th P.M. (Parcel No. 54170-00-019) (Commissioner District No. 4)

Type of Hearing: Quasi-Judicial

Planner: Ryan Howser (RyanHowser@elpasoco.com)

El Paso County is committed to full access and transparency while the community works through the COVID-19 crisis. That also means balancing public safety and keeping essential parts of County government open for business. You are welcome to appear in person at the hearing or attend the hearing remotely.

Watch the Live Hearings Remotely

If you are interested in watching the Planning Commission or Board of County Commissioners' hearing live, please go to <https://cloud.castus.tv/vod/elpasoco/video> at the scheduled time of the hearing. Staff will be monitoring the County's Live feed, so please feel free to ask questions or provide any comments you might have; however, any testimony you wish to provide must be done by following the "Participate Remotely" procedures listed below.

Participate Remotely

If you would like to provide testimony on an item being heard by the Planning Commission or the Board of County Commissioners, please email Elena Krebs at PCDhearings@elpasoco.com with your name and the best phone number to be reached at and include any documents you would like provided to the hearing body as part of the official record. **NOTE: New exhibits are not permitted via email the day of hearing. All exhibits must be emailed to Ms. Krebs no later than one day prior to each of the above listed hearings. Whether you are attending remotely or in person, kindly note there is a three (3) minute time limit on public comments and/or presentations.**

A list of individuals wishing to testify will be provided to the Chair in advance of the meeting. When it's time for public testimony on the item you'd like to testify on, you will receive a phone call at the number you provided and will be brought into the meeting remotely so you can address the hearing body.

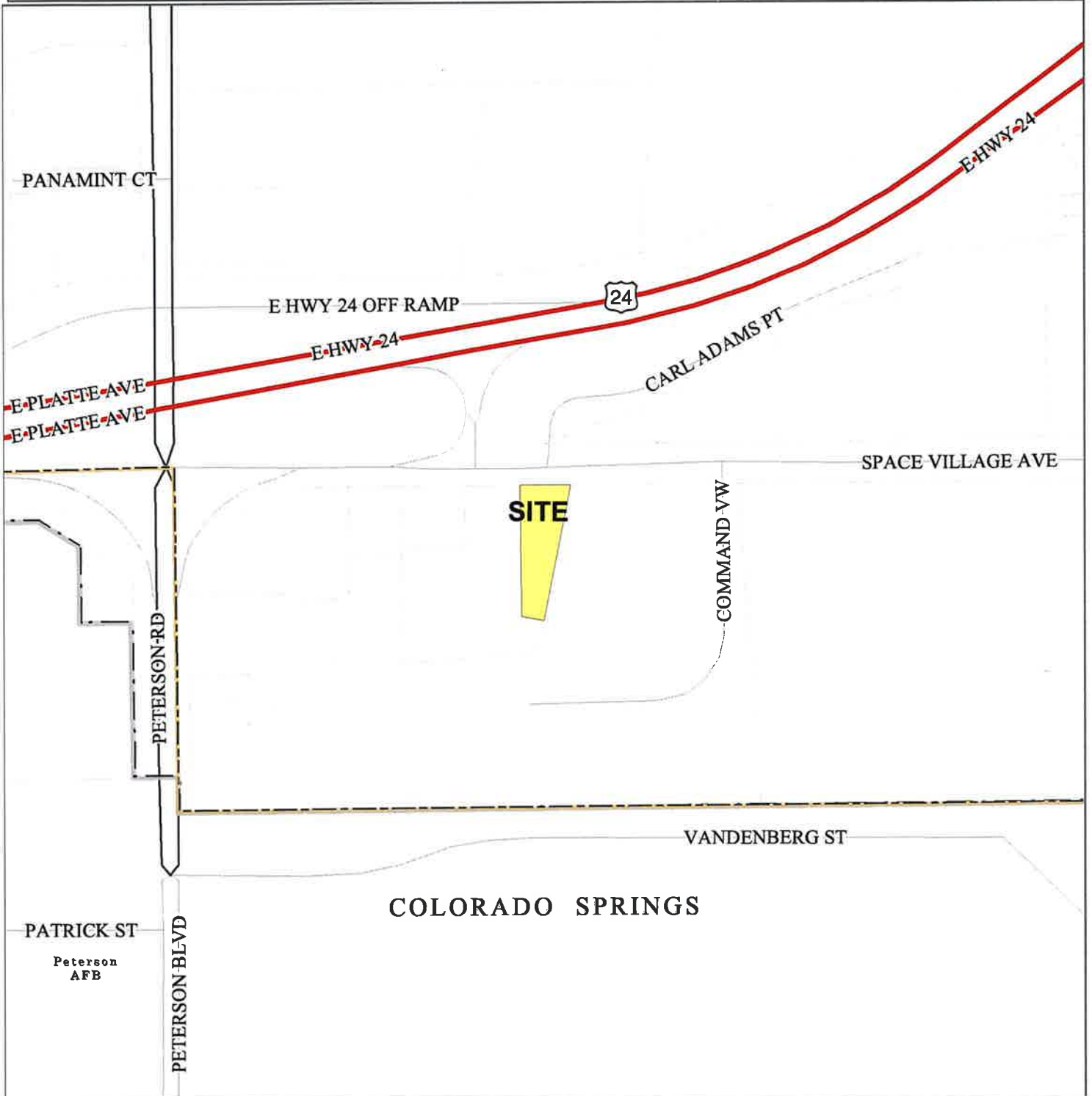
El Paso County Parcel Information

PARCE	NAME
5417000	BRIDLE DALE LLC

File Name: SF-20-025

Zone Map No. --

Date: September 16, 2021



Please report any parcel discrepancies to:
 El Paso County Assessor
 1675 W. Garden of the Gods Rd.
 Colorado Springs, CO 80907
 (719) 520-6600



COPYRIGHT 2018 by the Board of County Commissioners, El Paso County, Colorado. All rights reserved. No part of this document or data contained hereon may be reproduced; used to prepare derivative products; or distributed without the specific written approval of the Board of County Commissioners, El Paso County, Colorado. This document was prepared from the best data available at the time of printing. El Paso County, Colorado, makes no claim as to the completeness or accuracy of the data contained hereon.

5417001003
RAI MANAGEMENT INCORPORATED
165 FLANDERS RD
WESTBOROUGH, MA 01581

5417001004
COLO MILITARY ACADEMY BLDG CORP
360 COMMAND VIEW
COLORADO SPRINGS, CO 80915

5408001021
SCHUBERT RANCHES INC
1555 S BAGGETT RD
CALHAN, CO 80808

5408007005
COLORADO SPRINGS EQUITIES LLC
90 S CASCADE AVE STE 1500
COLORADO SPRINGS, CO 80903

5417000019
BRIDLE DALE LLC
4356 MONTEBELLO DR
COLORADO SPRINGS, CO 80936

5408007004
JOVENCHI II
4779 N ACADEMY BLVD
COLORADO SPRINGS, CO 80918

5408007003
MARATHON HOLDINGS LLP
4779 N ACADEMY BLVD
COLORADO SPRINGS, CO 80918

5408001023
CRIPPEN CONNIE L
6940 SPACE VILLAGE AVE
COLORADO SPRINGS, CO 80915

5417000020
HEM HOTELS LLC
9230 GINGERHILL CT
COLORADO SPRINGS, CO 80920