

brakes *plus*

84.81 SQ. FT.

SCALE: 1/2"=1'-0"

SIGN SIZE	MOUNTING SURFACE							
	SQUARE FOOTAGE	WOOD	SHEET METAL	BRICK	CONCRETE	CONCRETE BLOCK	DRYVIT / EIFS	STUCCO over wire mesh
UNDER 10 SQ. FT.	3" THRU BOLTS w/ 2 angle iron brackets A minimum of 4 3/8" bolts are required.	3" THRU BOLTS w/ 2 angle iron brackets A minimum of 4 3/8" bolts are required.	3" THRU BOLTS w/ 2 angle iron brackets A minimum of 4 3/8" bolts are required.	3" LEAD ANCHORS A minimum of 4 3/8" bolts are required.	3" LEAD ANCHORS A minimum of 4 3/8" bolts are required.	3" TOGGLE A minimum of 4 3/8" bolts are required.	3" THRU BOLTS w/ 2 angle iron brackets A minimum of 4 3/8" bolts are required.	3" THRU BOLTS w/ 2 angle iron brackets A minimum of 4 3/8" bolts are required.
10 SQ. FT. TO 50 SQ. FT.	3" THRU BOLTS w/ 2 angle iron brackets A minimum of 4 3/8" bolts are required.	3" THRU BOLTS w/ 2 angle iron brackets A minimum of 4 3/8" bolts are required.	3" THRU BOLTS w/ 2 angle iron brackets A minimum of 4 3/8" bolts are required.	3" LEAD ANCHORS A minimum of 4 3/8" bolts are required.	3" LEAD ANCHORS A minimum of 4 3/8" bolts are required.	3" TOGGLE A minimum of 4 3/8" bolts are required.	3" THRU BOLTS w/ 2 angle iron brackets A minimum of 4 3/8" bolts are required.	3" THRU BOLTS w/ 2 angle iron brackets A minimum of 4 3/8" bolts are required.
50 SQ. FT. TO 100 SQ. FT.	3" THRU BOLTS w/ 3 angle iron brackets A minimum of 10 3/8" bolts are required.	3" THRU BOLTS w/ 3 angle iron brackets A minimum of 10 3/8" bolts are required.	3" THRU BOLTS w/ 3 angle iron brackets A minimum of 10 3/8" bolts are required.	12" LEAD ANCHORS A minimum of 10 1/2" bolts are required.	12" LEAD ANCHORS A minimum of 10 1/2" bolts are required.	3" TOGGLE A minimum of 10 3/8" bolts are required.	3" THRU BOLTS w/ 3 angle iron brackets A minimum of 10 3/8" bolts are required.	3" THRU BOLTS w/ 3 angle iron brackets A minimum of 10 3/8" bolts are required.
100 SQ. FT. TO 200 SQ. FT.	3" THRU BOLTS w/ 3 angle iron brackets A minimum of 11 1/2" bolt per each 50 sq ft is required.	3" THRU BOLTS w/ 3 angle iron brackets A minimum of 11 1/2" bolt per each 50 sq ft is required.	3" THRU BOLTS w/ 3 angle iron brackets A minimum of 11 1/2" bolt per each 50 sq ft is required.	12" WEDGE ANCHOR A minimum of 11 1/2" bolt per each 50 sq ft is required.	12" WEDGE ANCHOR A minimum of 11 1/2" bolt per each 50 sq ft is required.	3" THRU BOLTS w/ 3 angle iron brackets A minimum of 11 1/2" bolt per each 50 sq ft is required.	REQUIRES SPECIAL ENGINEERING	REQUIRES SPECIAL ENGINEERING
OVER 200 SQ. FT.	REQUIRES SPECIAL ENGINEERING	REQUIRES SPECIAL ENGINEERING	REQUIRES SPECIAL ENGINEERING	12" THRU BOLTS w/ 4 angle 3" angle iron brackets A minimum of 11 1/2" bolt per each 50 sq ft is required.	12" THRU BOLTS w/ 4 angle 3" angle iron brackets A minimum of 11 1/2" bolt per each 50 sq ft is required.	REQUIRES SPECIAL ENGINEERING	REQUIRES SPECIAL ENGINEERING	REQUIRES SPECIAL ENGINEERING

NOTE:
ACCESS REQUIRED FOR
ELECTRICAL & INSTALLATION

  **MET**Laboratories

☒ **YES**

☐ **NO**

CLN
☐ YES ☐ NO

REMOTE POWER SUPPLY
UNIT.
120 VAC PRIMARY
12volt DC SECONDARY.

NUMBER REQ'D. = _____

**THIS SIGN IS
MET/UL COMPLIANT**

SECTION DETAIL: FLUSH MOUNT CHANNEL LETTERS

5"

.040 ALUMINUM
BACKS & RETURNS
COLOR - **DARK BRONZE**

1" JEWELITE TRIMCAP
COLOR - **DARK BRONZE**

TRANSLUCENT PLEX FACES
THICKNESS - ☒ 3/16" ☐ 1/8"
COLOR - **#278-0 ACRYLITE RED**

LOGO:
* TRANSLUCENT CUT VINYL GRAPHICS OVERLAYS
(OR DIGITALLY PRINTED OVERLAY)
#33 RED VINYL
#015 YELLOW VINYL
#167 BLUE VINYL
#22 BLACK

RED CHANNEL LETTERS:
LUMEN OUTPUT - 1,170; 2 AMPS

LOGO WHITE:
LUMEN OUTPUT - 2,250; 2 AMPS PER SIGN

LED ILLUMINATION
COLOR - **4" SLOAN RED MODULES**

NON-CORROSIVE
FASTENERS AS REQ'D.

1/4" WEEP HOLES
☒ YES ☐ NO

[illegible]

AUTHORIZATION	
CLIENT _____	DATE _____
ACCOUNT EXECUTIVE _____	DATE _____
LANDLORD _____	DATE _____

ALL CHANGES MUST BE INITIALED BY
CLIENT AND ACCOUNT EXECUTIVE ON
FINAL APPROVED PRINT.

This drawing is the exclusive property of Accent Graphics, Inc. and is the result of the original work of its employees. The plans are provided to your company for the sole purpose of considering the purchase of a sign manufactured by Accent Graphics, Inc. based on these plans OR the purchase of the plans and design concepts contained therein for manufacture elsewhere. Distribution or exhibition of the plans to anyone outside of your company or the use of the plans by others to manufacture or design a similar sign as displayed in the plans is expressly forbidden. In the event that such exhibition occurs, Accent Graphics will expect payment of a minimum \$2000 design fee in recompense for the time and effort entailed to produce the plans.

CLIENT BRAKES PLUS STORE #
 INSTALLATION ADDRESS
2467 MARKSHEFFEL ROAD COLORADO SPRINGS, CO
 DESIGNER KD 2 ACCOUNT EXECUTIVE NT
 DATE 03-11-2021 SHEET 1 OF 9 DESIGN # 21-101

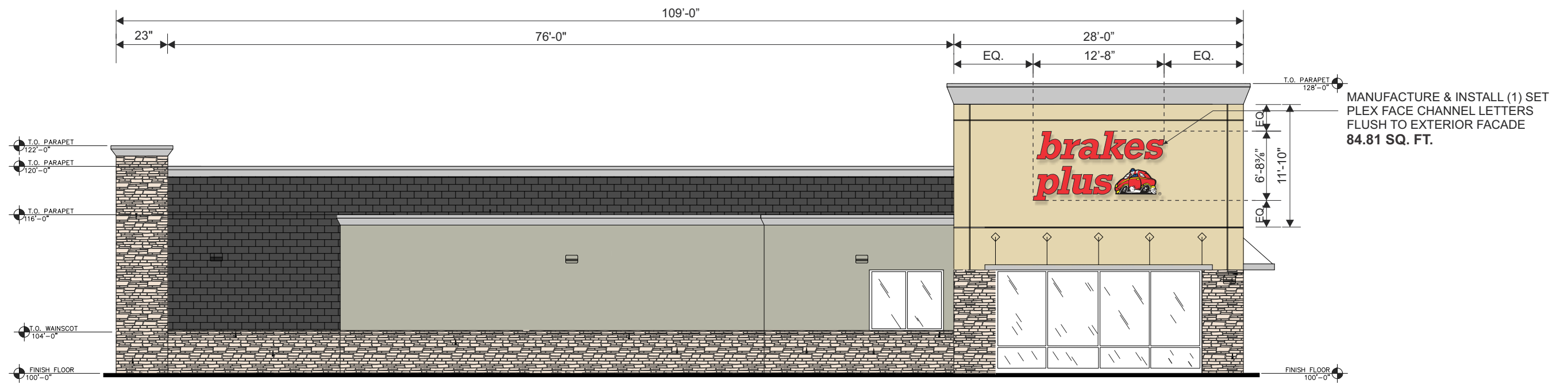
Gerber FILE = P:\1-2021-Jobs\3-Brakes Plus\CO\Colorado Springs, CO - 2467 Marksheffel Rd\Production\JOB3-
 Corel FILE = P:\1-2021-Jobs\3-Brakes Plus\CO\Colorado Springs, CO - 2467 Marksheffel Rd\Drawing\

accent  **graphics**
COMPLETE **SIGN** SERVICE & FABRICATION

523 E. ROCK ISLAND
GRAND PRAIRIE, TX 75050

TOLL FREE (800) 810-3044
METRO (972) 399-0333
FAX (972) 986-4456
FAX (800) 810-3045

EMAIL
WEBSITE www.accentgraphicsinc.com



WEST ELEVATION

Scale: 3/32" = 1'-0"

DATE	REVISIONS	NAME

AUTHORIZATION	
CLIENT	DATE
ACCOUNT EXECUTIVE	DATE
LANDLORD	DATE

This drawing is the exclusive property of Accent Graphics, Inc. and is the result of the original work of its employees. The plans are provided to your company for the sole purpose of considering the purchase of a sign manufactured by Accent Graphics, Inc. based on these plans. OR the purchase of the plans and design concepts contained therein for manufacture elsewhere. Distribution or exhibition of the plans to anyone outside of your company or the use of the plans by others to manufacture or design a similar sign as displayed in the plans is expressly forbidden. In the event that such exhibition occurs, Accent Graphics will expect payment of a minimum \$2000 design fee in recompense for the time and effort entailed to produce the plans.

CLIENT BRAKES PLUS STORE #

INSTALLATION ADDRESS 2467 MARKSHEFFEL ROAD COLORADO SPRINGS, CO

DESIGNER KD ACCOUNT EXECUTIVE NT

DATE 03-11-2021 SHEET 2 OF 9 DESIGN # 21-101

Gerber FILE = P:\1-2021-Jobs\3-Brakes Plus\CO\Colorado Springs, CO - 2467 Marksheffel Rd\Production\JOBS
Corel FILE = P:\1-2021-Jobs\3-Brakes Plus\CO\Colorado Springs, CO - 2467 Marksheffel Rd\Drawings

accent**graphics**

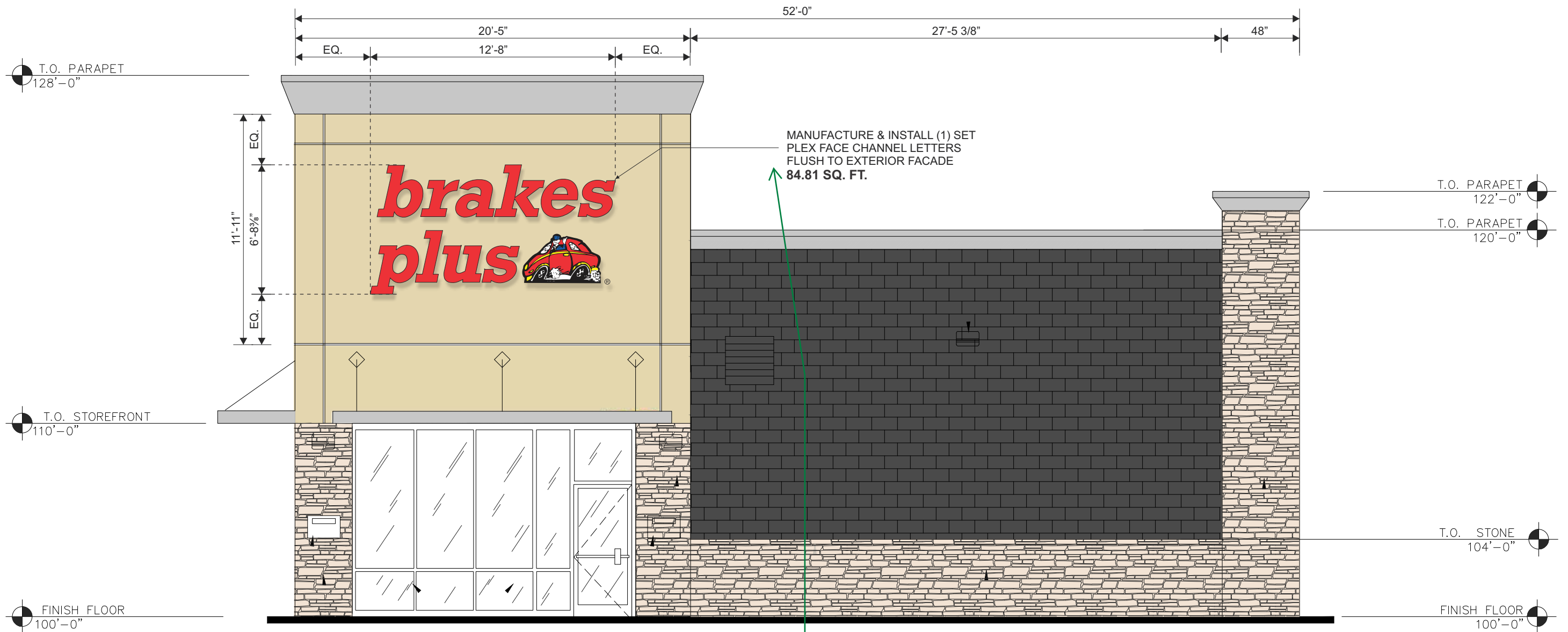
COMPLETE **SIGN** SERVICE & FABRICATION

523 E. ROCK ISLAND
GRAND PRAIRIE, TX 75050

TOLL FREE (800) 810-3044
METRO (972) 399-0333
FAX (972) 986-4456
FAX (800) 810-3045

EMAIL
WEBSITE

www.accentgraphicsinc.com



SOUTH ELEVATION

This sign exceeds the allowable sign area per LDC Ch. 6 Signage Standards.

The maximum area of the sign (in SF) can be up to 1.5 times the linear feet of building wall on which the sign is being proposed. For a 52-foot long building wall, the max. sign area allowed is 78 square feet.

Please revise to comply with the standards.

Scale: 3/16" = 1'-0"

DATE	REVISIONS	NAME

AUTHORIZATION	
CLIENT	DATE
ACCOUNT EXECUTIVE	DATE
LANDLORD	DATE
ALL CHANGES MUST BE INITIALED BY CLIENT AND ACCOUNT EXECUTIVE ON FINAL APPROVED PRINT.	

This drawing is the exclusive property of Accent Graphics, Inc. and is the result of the original work of its employees. The plans are provided to your company for the sole purpose of considering the purchase of a sign manufactured by Accent Graphics, Inc. based on these plans. **OR** the purchase of the plans and design concepts contained therein for manufacture elsewhere. Distribution or exhibition of the plans to anyone outside of your company or the use of the plans by others to manufacture or design a similar sign as displayed in the plans is expressly forbidden. In the event that such exhibition occurs, Accent Graphics will expect payment of a minimum \$2000 design fee in recompense for the time and effort entailed to produce the plans.

CLIENT BRAKES PLUS STORE #
INSTALLATION ADDRESS 2467 MARKSHEFFEL ROAD COLORADO SPRINGS, CO
DESIGNER KD ACCOUNT EXECUTIVE NT
DATE 03-11-2021 SHEET 3 OF 9 DESIGN # 21-101
Gerber FILE = P:\1-2021-Jobs\3-Brakes Plus\CO\Colorado Springs, CO - 2467 Marksheffel Rd\Production\JOBS
Corel FILE = P:\1-2021-Jobs\3-Brakes Plus\CO\Colorado Springs, CO - 2467 Marksheffel Rd\Drawings

accent  **graphics**
COMPLETE **SIGN** SERVICE & FABRICATION

523 E. ROCK ISLAND
GRAND PRAIRIE, TX 75050
EMAIL
WEBSITE www.accentgraphicsinc.com

TOLL FREE (800) 810-3044
METRO (972) 399-0333
FAX (972) 986-4456
FAX (800) 810-3045

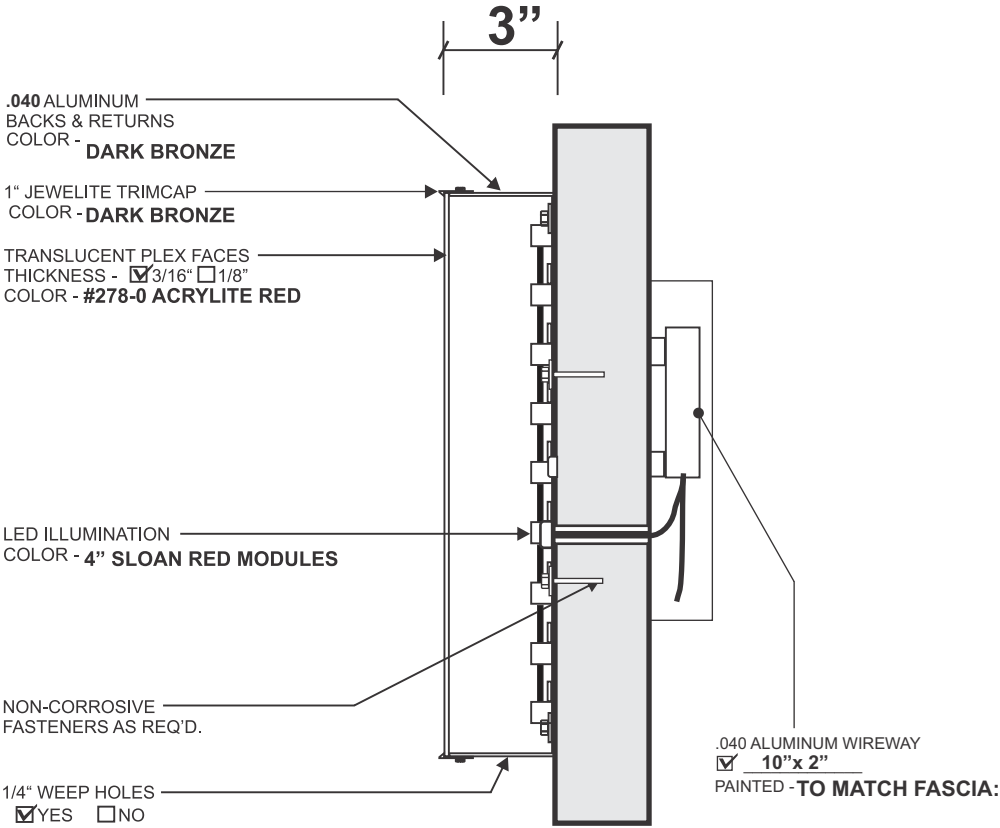


PLEX FACE CHANNEL LETTERS **EAST ELEVATION**

(1) SET REQUIRED

95.79 SQ. FT.

Scale: 1/2" = 1'-0"



INSTALLATION REQUIREMENTS for all signs unless specified otherwise on individual sign specifications.
Variation from this criteria without written approval from Accent Graphics is strictly forbidden.
* All freestanding signs are to be engineered for local conditions by a licensed and registered engineer.

SIGN SIZE	MOUNTING SURFACE							
	SQUARE FOOTAGE	WOOD	SHEET METAL	BRICK	CONCRETE	CONCRETE BLOCK	DRYVIT / EIFS	STUCCO over w/ mesh
	UNDER 10 SQ. FT.	3/8" THRU BOLTS w/ 2" angle iron nail A minimum of 4 (3) bolts both are required	3/8" THRU BOLTS w/ 2" angle iron nail A minimum of 4 (3) bolts both are required	3/8" LEAD ANCHORS A minimum of 4 (3) bolts both are required	3/8" LEAD ANCHORS A minimum of 4 (3) bolts both are required	3/8" TOGGLE A minimum of 4 (3) bolts both are required	3/8" THRU BOLTS w/ 2" angle iron nail A minimum of 4 (3) bolts both are required	3/8" THRU BOLTS w/ 2" angle iron nail A minimum of 4 (3) bolts both are required
	10 SQ. FT. to 50 SQ. FT.	3/8" THRU BOLTS w/ 2" angle iron nail A minimum of 4 (3) bolts both are required	3/8" THRU BOLTS w/ 2" angle iron nail A minimum of 4 (3) bolts both are required	3/8" LEAD ANCHORS A minimum of 4 (3) bolts both are required	3/8" LEAD ANCHORS A minimum of 4 (3) bolts both are required	3/8" TOGGLE A minimum of 4 (3) bolts both are required	3/8" THRU BOLTS w/ 2" angle iron nail A minimum of 4 (3) bolts both are required	3/8" THRU BOLTS w/ 2" angle iron nail A minimum of 4 (3) bolts both are required
	50 SQ. FT. to 100 SQ. FT.	3/8" THRU BOLTS w/ 2" angle iron nail A minimum of 10 (3) bolts both are required	3/8" THRU BOLTS w/ 3" angle iron nail A minimum of 10 (3) bolts both are required	1/2" LEAD ANCHORS A minimum of 10 (1) bolts both are required	1/2" LEAD ANCHORS A minimum of 10 (1) bolts both are required	1/2" TOGGLE A minimum of 10 (3) bolts both are required	3/8" THRU BOLTS w/ 2" angle iron nail A minimum of 10 (3) bolts both are required	3/8" THRU BOLTS w/ 2" angle iron nail A minimum of 10 (3) bolts both are required
	100 SQ. FT. to 200 SQ. FT.	3/8" THRU BOLTS w/ 3" angle iron nail A minimum of 10 (1) bolt per each 15 sq ft is required	1/2" THRU BOLTS w/ 3" angle iron nail A minimum of 10 (1) bolt per each 15 sq ft is required	1/2" WEDGE ANCHOR A minimum of 1 (1) bolt per each 15 sq ft is required	1/2" WEDGE ANCHOR A minimum of 1 (1) bolt per each 15 sq ft is required	3/8" THRU BOLTS w/ 3" angle iron nail A minimum of 10 (1) bolt per each 15 sq ft is required	REQUIRES SPECIAL ENGINEERING	REQUIRES SPECIAL ENGINEERING
	OVER 200 SQ. FT.	REQUIRES SPECIAL ENGINEERING	REQUIRES SPECIAL ENGINEERING	1/2" THRU BOLTS w/ 3" angle iron nail A minimum of 1 (1) bolt per each 15 sq ft is required	1/2" THRU BOLTS w/ 3" angle iron nail A minimum of 1 (1) bolt per each 15 sq ft is required	REQUIRES SPECIAL ENGINEERING	REQUIRES SPECIAL ENGINEERING	REQUIRES SPECIAL ENGINEERING

NOTE:
ACCESS REQUIRED FOR
ELECTRICAL & INSTALLATION

***WHERE LETTERS LOGO ARE MOUNTED ON PARAPET WALL
CONCEAL ALL ELECTRICAL IN WIREWAY**

SECTION DETAIL: FLUSH MOUNT CHANNEL LETTERS

DATE	REVISIONS	NAME

AUTHORIZATION	
CLIENT	DATE
ACCOUNT EXECUTIVE	DATE
LANDLORD	DATE

This drawing is the exclusive property of Accent Graphics, Inc. and is the result of the original work of its employees. The plans are provided to your company for the sole purpose of considering the purchase of a sign manufactured by Accent Graphics, Inc. based on these plans. **OR** the purchase of the plans and design concepts contained therein for manufacture elsewhere. Distribution or exhibition of the plans to anyone outside of your company or the use of the plans by others to manufacture or design a similar sign as displayed in the plans is expressly forbidden. In the event that such exhibition occurs, Accent Graphics will expect payment of a minimum \$2000 design fee in recompense for the time and effort entailed to produce the plans.

CLIENT BRAKES PLUS STORE #

INSTALLATION ADDRESS 2467 MARKSHEFFEL ROAD COLORADO SPRINGS, CO

DESIGNER KD ACCOUNT EXECUTIVE NT

DATE 03-11-2021 SHEET 4 OF 9 DESIGN # 21-101

Gerber FILE = P:\1-2021-Jobs\3-Brakes Plus\CO\Colorado Springs, CO - 2467 Marksheffel Rd\Production\JOBS
Corel FILE = P:\1-2021-Jobs\3-Brakes Plus\CO\Colorado Springs, CO - 2467 Marksheffel Rd\Drawings

accent**graphics**

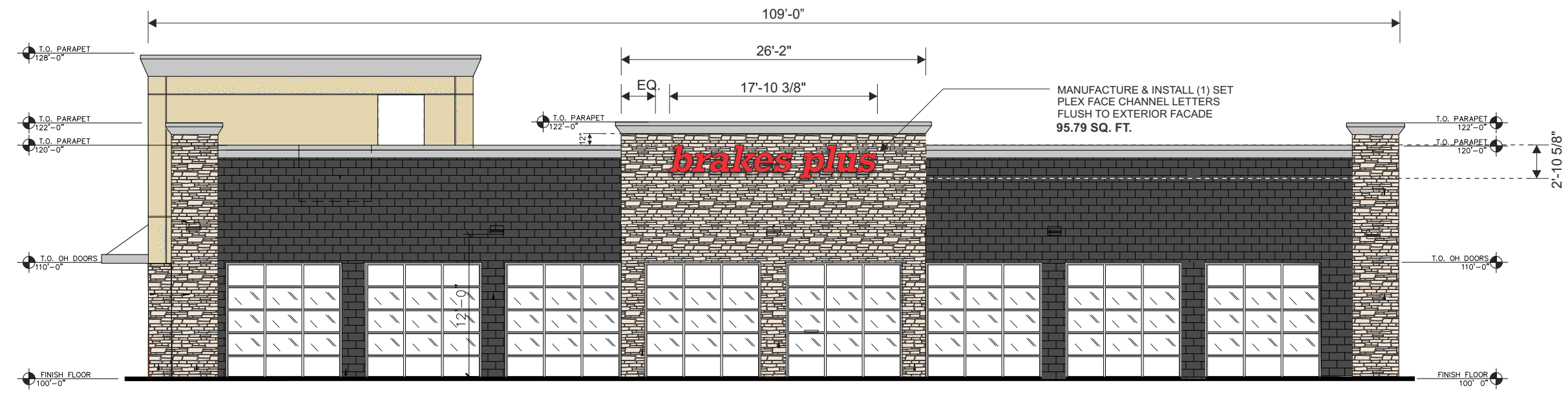
COMPLETE **SIGN** SERVICE & FABRICATION

523 E. ROCK ISLAND
GRAND PRAIRIE, TX 75050

TOLL FREE (800) 810-3044
METRO (972) 399-0333
FAX (972) 986-4456
FAX (800) 810-3045

EMAIL
WEBSITE

www.accentgraphicsinc.com



EAST ELEVATION

Scale: 3/32" = 1'-0"

DATE	REVISIONS	NAME

AUTHORIZATION	
CLIENT	DATE
ACCOUNT EXECUTIVE	DATE
LANDLORD	DATE
ALL CHANGES MUST BE INITIALED BY CLIENT AND ACCOUNT EXECUTIVE ON FINAL APPROVED PRINT.	

This drawing is the exclusive property of Accent Graphics, Inc. and is the result of the original work of its employees. The plans are provided to your company for the sole purpose of considering the purchase of a sign manufactured by Accent Graphics, Inc. based on these plans. OR the purchase of the plans and design concepts contained therein for manufacture elsewhere. Distribution or exhibition of the plans to anyone outside of your company or the use of the plans by others to manufacture or design a similar sign as displayed in the plans is expressly forbidden. In the event that such exhibition occurs, Accent Graphics will expect payment of a minimum \$2000 design fee in recompense for the time and effort entailed to produce the plans.

CLIENT BRAKES PLUS STORE #

INSTALLATION ADDRESS 2467 MARKSHEFFEL ROAD COLORADO SPRINGS, CO

DESIGNER KD ACCOUNT EXECUTIVE NT

DATE 03-11-2021 SHEET 5 OF 9 DESIGN # 21-101

Gerber FILE = P:\1-2021-Jobs\3-Brakes Plus\CO\Colorado Springs, CO - 2467 Marksheffel Rd\Production\JOBS
Corel FILE = P:\1-2021-Jobs\3-Brakes Plus\CO\Colorado Springs, CO - 2467 Marksheffel Rd\Drawings

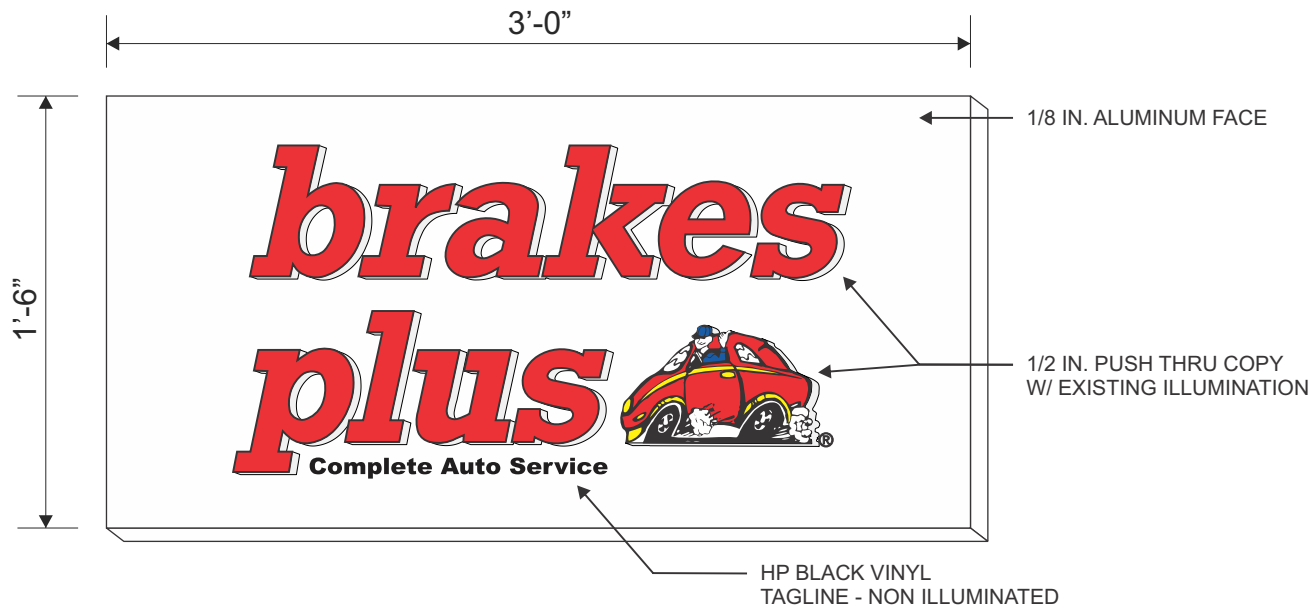
accent**graphics**

COMPLETE **SIGN** SERVICE & FABRICATION

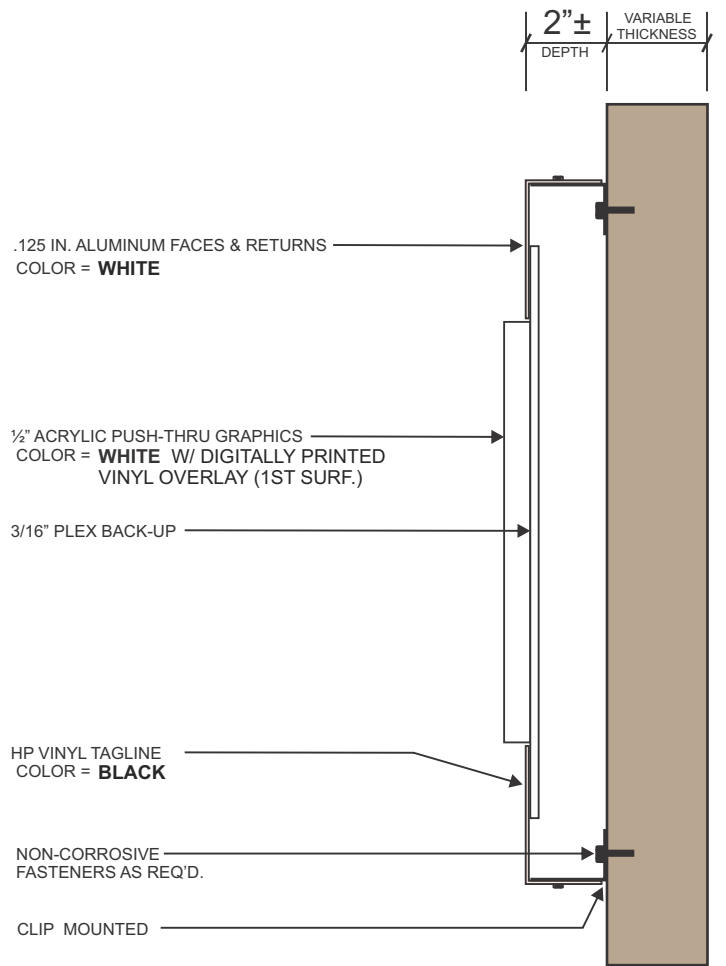
523 E. ROCK ISLAND
GRAND PRAIRIE, TX 75050

TOLL FREE (800) 810-3044
METRO (972) 399-0333
FAX (972) 986-4456
EMAIL
WEBSITE www.accentgraphicsinc.com

FAX (800) 810-3045



PAN SIGN W/ PUSH THRU GRAPHICS **4.5 SQ. FT.**
QTY: (2) REQUIRED Scale: 1 1/2" = 1'-0"



SECTION DETAIL - ALUMINUM PAN w/ PUSH THRU LETTERS
Scale: NTS

INSTALLATION REQUIREMENTS for all signs unless specified otherwise on individual sign specifications.
Variation from this criteria without written approval from Accent Graphics is strictly forbidden.
* All freestanding signs are to be engineered for local conditions by a licensed and registered engineer.

SIGN SIZE	MOUNTING SURFACE							
	SQUARE FOOTAGE	WOOD	SHEET METAL	BRICK	CONCRETE	CONCRETE BLOCK	DRYVIT / EIFS	STUCCO over wire mesh
	UNDER 10 SQ. FT.	3/8" THRU BOLTS w/ 2" angle iron backer A minimum of (4) 3/8" bolts are required.	3/8" THRU BOLTS w/ 2" angle iron backer A minimum of (4) 3/8" bolts are required.	3/8" LEAD ANCHORS A minimum of (4) 3/8" bolts are required.	3/8" LEAD ANCHORS A minimum of (4) 3/8" bolts are required.	3/8" TOGGLE A minimum of (4) 3/8" bolts are required.	3/8" THRU BOLTS w/ 2" angle iron backer A minimum of (4) 3/8" bolts are required.	3/8" THRU BOLTS w/ 2" angle iron backer A minimum of (4) 3/8" bolts are required.
	10 SQ. FT. TO 50 SQ. FT.	3/8" THRU BOLTS w/ 2" angle iron backer A minimum of (4) 3/8" bolts are required.	3/8" THRU BOLTS w/ 2" angle iron backer A minimum of (4) 3/8" bolts are required.	3/8" LEAD ANCHORS A minimum of (4) 3/8" bolts are required.	3/8" LEAD ANCHORS A minimum of (4) 3/8" bolts are required.	3/8" TOGGLE A minimum of (4) 3/8" bolts are required.	3/8" THRU BOLTS w/ 2" angle iron backer A minimum of (4) 3/8" bolts are required.	3/8" THRU BOLTS w/ 2" angle iron backer A minimum of (4) 3/8" bolts are required.
	50 SQ. FT. TO 100 SQ. FT.	3/8" THRU BOLTS w/ 3" angle iron backer A minimum of (10) 3/8" bolts are required.	3/8" THRU BOLTS w/ 3" angle iron backer A minimum of (10) 3/8" bolts are required.	1/2" LEAD ANCHORS A minimum of (10) 1/2" bolts are required.	1/2" LEAD ANCHORS A minimum of (10) 1/2" bolts are required.	3/8" THRU BOLTS w/ 1" angle iron backer A minimum of (10) 3/8" bolts are required.	3/8" THRU BOLTS w/ 3" angle iron backer A minimum of (10) 3/8" bolts are required.	3/8" THRU BOLTS w/ 3" angle iron backer A minimum of (10) 3/8" bolts are required.
	100 SQ. FT. TO 200 SQ. FT.	1/2" THRU BOLTS w/ 3" angle iron backer A minimum of (1) 1/2" bolt per each 15 sq ft. is required.	1/2" THRU BOLTS w/ 3" angle iron backer A minimum of (1) 1/2" bolt per each 15 sq ft. is required.	1/2" WEDGE ANCHOR A minimum of (1) 1/2" bolt per each 15 sq ft. is required.	1/2" WEDGE ANCHOR A minimum of (1) 1/2" bolt per each 15 sq ft. is required.	1/2" THRU BOLTS w/ 3" angle iron backer A minimum of (1) 1/2" bolt per each 15 sq ft. is required.	REQUIRES SPECIAL ENGINEERING	REQUIRES SPECIAL ENGINEERING
	OVER 200 SQ. FT.	REQUIRES SPECIAL ENGINEERING	REQUIRES SPECIAL ENGINEERING	1/2" THRU BOLTS w/ 4" post 3" angle iron backer A minimum of (1) 1/2" bolt per each 15 sq ft. is required.	1/2" THRU BOLTS w/ 4" post 3" angle iron backer A minimum of (1) 1/2" bolt per each 15 sq ft. is required.	REQUIRES SPECIAL ENGINEERING	REQUIRES SPECIAL ENGINEERING	REQUIRES SPECIAL ENGINEERING

Backers = 24" or 36" long steel angle iron (1 1/2" x 1 1/2" min.)

DATE	REVISIONS	NAME	AUTHORIZATION
			CLIENT _____ DATE _____
			ACCOUNT EXECUTIVE _____ DATE _____
			LANDLORD _____ DATE _____
			ALL CHANGES MUST BE INITIALED BY CLIENT AND ACCOUNT EXECUTIVE ON FINAL APPROVED PRINT.

This drawing is the exclusive property of Accent Graphics, Inc. and is the result of the original work of its employees. The plans are provided to your company for the sole purpose of considering the purchase of a sign manufactured by Accent Graphics, Inc. based on these plans. OR the purchase of the plans and design concepts contained therein for manufacture elsewhere. Distribution or exhibition of the plans to anyone outside of your company or the use of the plans by others to manufacture or design a similar sign as displayed in the plans is expressly forbidden. In the event that such exhibition occurs, Accent Graphics will expect payment of a minimum \$2000 design fee in recompense for the time and effort entailed to produce the plans.

CLIENT _____ BRAKES PLUS _____ STORE # _____
INSTALLATION ADDRESS _____
2467 MARKSHEFFEL ROAD COLORADO SPRINGS, CO
DESIGNER _____ KD _____ ACCOUNT EXECUTIVE _____ NT
DATE 03-11-2021 SHEET 6 OF 9 DESIGN # 21-101
Gerber FILE = P:\1-2021-Jobs\3-Brakes Plus\CO\Colorado Springs, CO - 2467 Marksheffel Rd\Production\JOBS
Corel FILE = P:\1-2021-Jobs\3-Brakes Plus\CO\Colorado Springs, CO - 2467 Marksheffel Rd\Drawings

accent **SIGNS** **graphics**
COMPLETE SIGN SERVICE & FABRICATION

523 E. ROCK ISLAND
GRAND PRAIRIE, TX 75050
TOLL FREE (800) 810-3044
METRO (972) 399-0333
FAX (972) 986-4456
EMAIL
WEBSITE www.accentgraphicsinc.com
FAX (800) 810-3045

Manufacture and Install One(1) Internally Illuminated Monument Sign

Scale: 3/8" - 1"-0"

Monument Sign:

- **Structure:** Aluminum Angle Skinned with .090" Aluminum Painted Customer Specified
- **Faces:** Routed .125 Painted Customer Specified
- **Copy:** 1/2" Push Thru Acrylic Backed with 3/16" Acrylic Stud Mounted to the Face
- **Vinyl:** TBD
- **Illumination:** CWHO Fluorescent Lamps
- **Power:** Ballasts in Sign
- **Digital Display:** Daktronics Fuelight
- **Installation:** On ASA Pipe and Footer at Customer Specified Location

MANUFACTURE & INSTALL (2) ALUMINUM
CONST. PAN SIGNS W/ PUSH THRU COPY
AND VINYL TAG ONTO EXISTING MONUMENT.
4.5 SQ. FT.



DATE	REVISIONS	NAME

AUTHORIZATION	
CLIENT	DATE
ACCOUNT EXECUTIVE	DATE
LANDLORD	DATE
ALL CHANGES MUST BE INITIALED BY CLIENT AND ACCOUNT EXECUTIVE ON FINAL APPROVED PRINT.	

This drawing is the exclusive property of Accent Graphics, Inc. and is the result of the original work of its employees. The plans are provided to your company for the sole purpose of considering the purchase of a sign manufactured by Accent Graphics, Inc. based on these plans. OR the purchase of the plans and design concepts contained therein for manufacture elsewhere. Distribution or exhibition of the plans to anyone outside of your company or the use of the plans by others to manufacture or design a similar sign as displayed in the plans is expressly forbidden. In the event that such exhibition occurs, Accent Graphics will expect payment of a minimum \$2000 design fee in recompense for the time and effort entailed to produce the plans.

CLIENT BRAKES PLUS STORE #

INSTALLATION ADDRESS 2467 MARKSHEFFEL ROAD COLORADO SPRINGS, CO

DESIGNER KD ACCOUNT EXECUTIVE NT

DATE 03-11-2021 SHEET 7 OF 9 DESIGN # 21-101

Gerber FILE = P:\1-2021-Jobs\3-Brakes Plus\CO\Colorado Springs, CO - 2467 Marksheffel Rd\Production\JOBS
Corel FILE = P:\1-2021-Jobs\3-Brakes Plus\CO\Colorado Springs, CO - 2467 Marksheffel Rd\Drawings

accent**graphics**

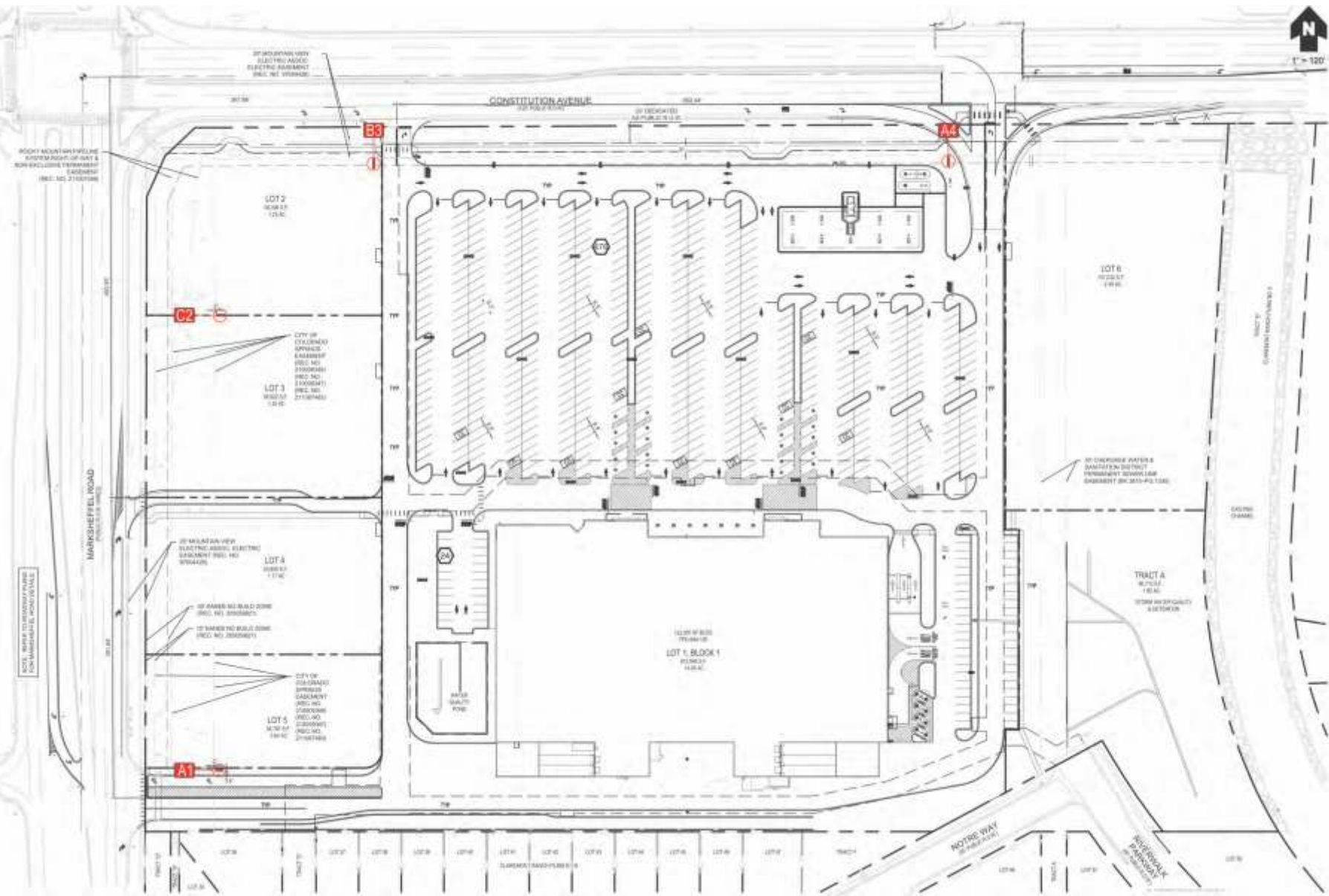
COMPLETE **SIGN** SERVICE & FABRICATION

523 E. ROCK ISLAND
GRAND PRAIRIE, TX 75050

TOLL FREE (800) 810-3044
METRO (972) 399-0333
FAX (972) 986-4456
FAX (800) 810-3045

EMAIL
WEBSITE

www.accentgraphicsinc.com



DATE	REVISIONS	NAME

AUTHORIZATION	
CLIENT	DATE
ACCOUNT EXECUTIVE	DATE
LANDLORD	DATE
ALL CHANGES MUST BE INITIALED BY CLIENT AND ACCOUNT EXECUTIVE ON FINAL APPROVED PRINT.	

This drawing is the exclusive property of Accent Graphics, Inc. and is the result of the original work of its employees. The plans are provided to your company for the sole purpose of considering the purchase of a sign manufactured by Accent Graphics, Inc. based on these plans. **OR** the purchase of the plans and design concepts contained therein for manufacture elsewhere. Distribution or exhibition of the plans to anyone outside of your company or the use of the plans by others to manufacture or design a similar sign as displayed in the plans is expressly forbidden. In the event that such exhibition occurs, Accent Graphics will expect payment of a minimum \$2000 design fee in recompense for the time and effort entailed to produce the plans.

CLIENT BRAKES PLUS STORE #

INSTALLATION ADDRESS 2467 MARKSHEFFEL ROAD COLORADO SPRINGS, CO

DESIGNER KD ACCOUNT EXECUTIVE NT

DATE 03-11-2021 SHEET 8 OF 9 DESIGN # 21-101

Gerber FILE = P:\1-2021-Jobs\3-Brakes Plus\CO\Colorado Springs, CO - 2467 Marksheffel Rd\Production\JOBS
Corel FILE = P:\1-2021-Jobs\3-Brakes Plus\CO\Colorado Springs, CO - 2467 Marksheffel Rd\Drawings

accent

SIGNS

graphics

COMPLETE SIGN SERVICE & FABRICATION

523 E. ROCK ISLAND
GRAND PRAIRIE, TX 75050

TOLL FREE (800) 810-3044
METRO (972) 399-0333
FAX (972) 986-4456
EMAIL
WEBSITE www.accentgraphicsinc.com

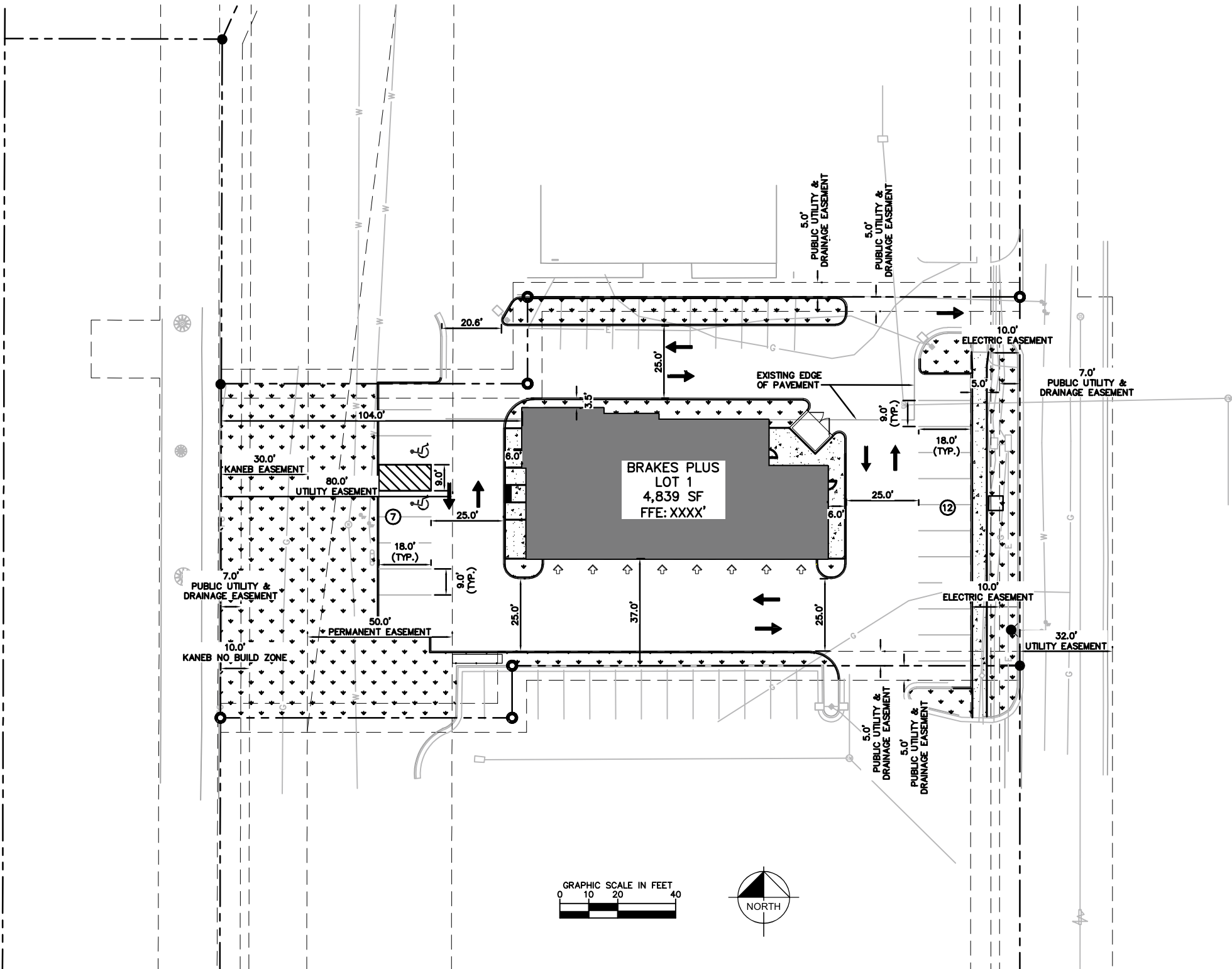
FAX (800) 810-3045

LEGEND

- PROPERTY LINE
- BUILDING SETBACK LINE
- EASEMENT LINE
- AR ACCESSIBLE ROUTE
- PROPOSED FIRE LANE STRIPING
- LANDSCAPE
- PROPOSED HEAVY DUTY CONCRETE PAVEMENT
- PROPOSED SITE LIGHT
- PROPOSED STORM SEWER MANHOLE
- EXISTING STORM SEWER MANHOLE
- PROPOSED CURB INLET
- PROPOSED AREA INLET

KEYNOTE LEGEND

- PROPOSED TYPE A CURB AND GUTTER PER EL PASO COUNTY STD. SD. 2-20
- PROPOSED CONCRETE SIDEWALK PER CDOT STANDARD DRAWING M-609-1 (WIDTH PER PLAN)
- PROPOSED ADA STRIPING, REFER TO SHEET 5 FOR MORE INFORMATION
- PROPOSED ADA SIGN, REFER TO SHEET 5 FOR MORE INFORMATION, SIGN INSTALLATION PER PLAN.
- PROPOSED MONUMENT SIGN, REFER TO ARCHITECTURAL PLANS FOR MORE DETAILS
- PROPOSED TRASH ENCLOSURE, REFER TO ARCHITECTURAL PLANS FOR MORE DETAILS
- PROPOSED PAVEMENT MARKING
- EXISTING FIRE HYDRANT
- PROPOSED LANDSCAPING, REFER TO SHEETS 6-8



DATE	REVISIONS	NAME

AUTHORIZATION	
CLIENT	DATE
ACCOUNT EXECUTIVE	DATE
LANDLORD	DATE

This drawing is the exclusive property of Accent Graphics, Inc. and is the result of the original work of its employees. The plans are provided to your company for the sole purpose of considering the purchase of a sign manufactured by Accent Graphics, Inc. based on these plans. OR the purchase of the plans and design concepts contained therein for manufacture elsewhere. Distribution or exhibition of the plans to anyone outside of your company or the use of the plans by others to manufacture or design a similar sign as displayed in the plans is expressly forbidden. In the event that such exhibition occurs, Accent Graphics will expect payment of a minimum \$2000 design fee in recompense for the time and effort entailed to produce the plans.

CLIENT BRAKES PLUS STORE #

INSTALLATION ADDRESS 2467 MARKSHEFFEL ROAD COLORADO SPRINGS, CO

DESIGNER KD ACCOUNT EXECUTIVE NT

DATE 03-11-2021 SHEET 9 OF 9 DESIGN # 21-101

Gerber FILE = P:\1-2021-Jobs\3-Brakes Plus\CO\Colorado Springs, CO - 2467 Marksheffel Rd\Production\JOBS
Corel FILE = P:\1-2021-Jobs\3-Brakes Plus\CO\Colorado Springs, CO - 2467 Marksheffel Rd\Drawings

accent signs graphics
COMPLETE SIGN SERVICE & FABRICATION

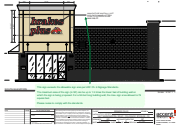
523 E. ROCK ISLAND
GRAND PRAIRIE, TX 75050

EMAIL
WEBSITE www.accentgraphicsinc.com

TOLL FREE (800) 810-3044
METRO (972) 399-0333
FAX (972) 986-4456
FAX (800) 810-3045

Sign Plan_V1.pdf Markup Summary

Sophie Kiepe (1)



Subject: Callout
Page Label: 3
Author: Sophie Kiepe
Date: 4/19/2021 4:13:00 PM
Status:
Color: ■
Layer:
Space:

This sign exceeds the allowable sign area per LDC Ch. 6 Signage Standards.

The maximum area of the sign (in SF) can be up to 1.5 times the linear feet of building wall on which the sign is being proposed. For a 52-foot long building wall, the max. sign area allowed is 78 square feet.

Please revise to comply with the standards.