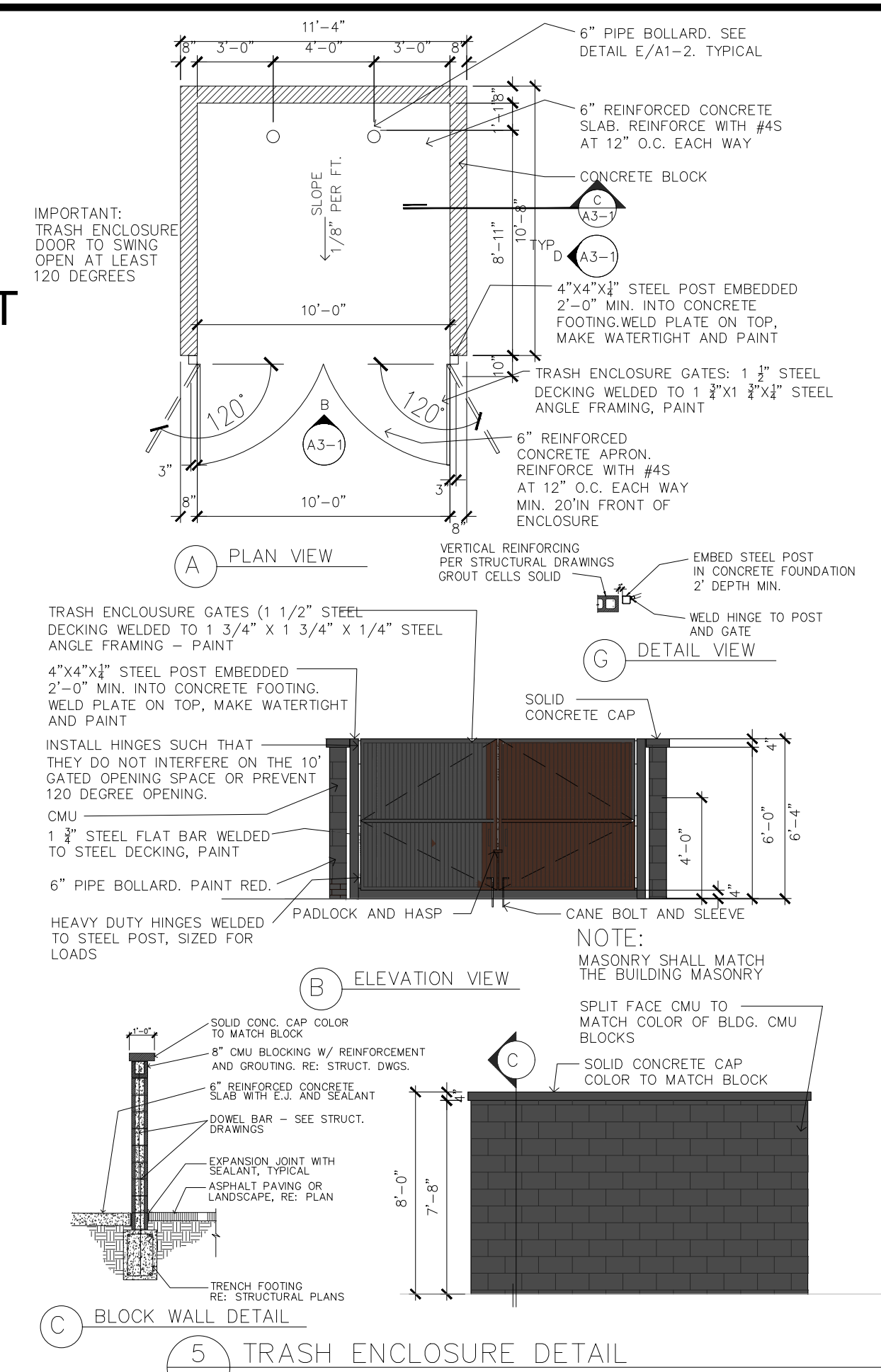
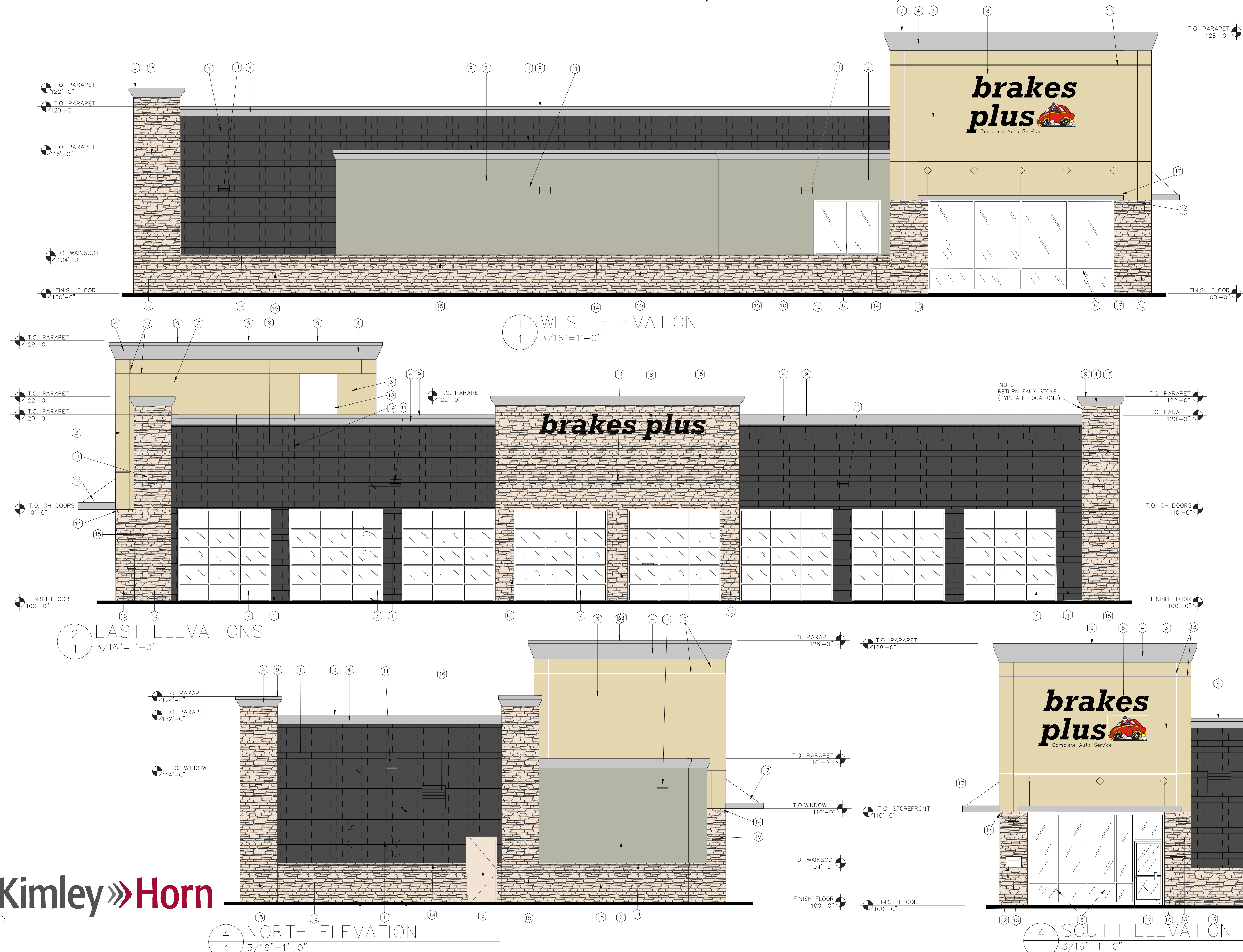


BRAKES PLUS  
SITE DEVELOPMENT PLAN  
2467 MARKSHEFFEL ROAD

SITUATED IN A PORTION OF THE NORTHWEST QUARTER OF SECTION 4, TOWNSHIP 14 SOUTH, RANGE 65 WEST  
OF THE 6TH P.M., COUNTY OF EL PASO, STATE OF COLORADO



- KEYNOTES**
- SPLIT FACE CONCRETE BLOCK - BEST BLOCK CHARCOAL #838 or BASELITE CHARCOAL #807WR
  - EIFS - INTEGRAL COLOR TO MATCH SHERWIN WILLIAMS ANEW GRAY #7030
  - EIFS - INTEGRAL COLOR TO MATCH SHERWIN WILLIAMS BIRDSEYE MAPLE
  - EIFS - INTEGRAL COLOR TO MATCH AWNING COLOR
  - MTL. MAN DOOR. PAINT TO MATCH MASONRY
  - ALUMINUM/GLASS STOREFRONT CLEAR ANODIZED ALUMINUM
  - ALUMINUM SECTIONAL OVERHEAD DOORS CLEAR ANODIZED ALUMINUM
  - INTERNALLY-ILLUMINATED "BRAKES PLUS" SIGNAGE
  - PRE-FINISHED METAL CAP FLASHING FINISHED TO MATCH AWNING COLOR
  - NOT USED
  - DECORATIVE LIGHT FIXTURE.
  - KEY DROP BOX
  - 1 1/2" X 3/4" EIFS REVEAL
  - THIN STONE WATER SILL - TAUPE
  - CULTURED STONE WHITE OAK COUNTRY LEDGESTONE
  - MECH. GRILLE - PAINT TO MATCH BLOCK
  - METAL AWNING - BERRIDGE "CITYSCAPE COLOR"
  - OPEN TO BEYOND
  - DASHED LINE INDICATES HVAC UNIT BEHIND PARAPET