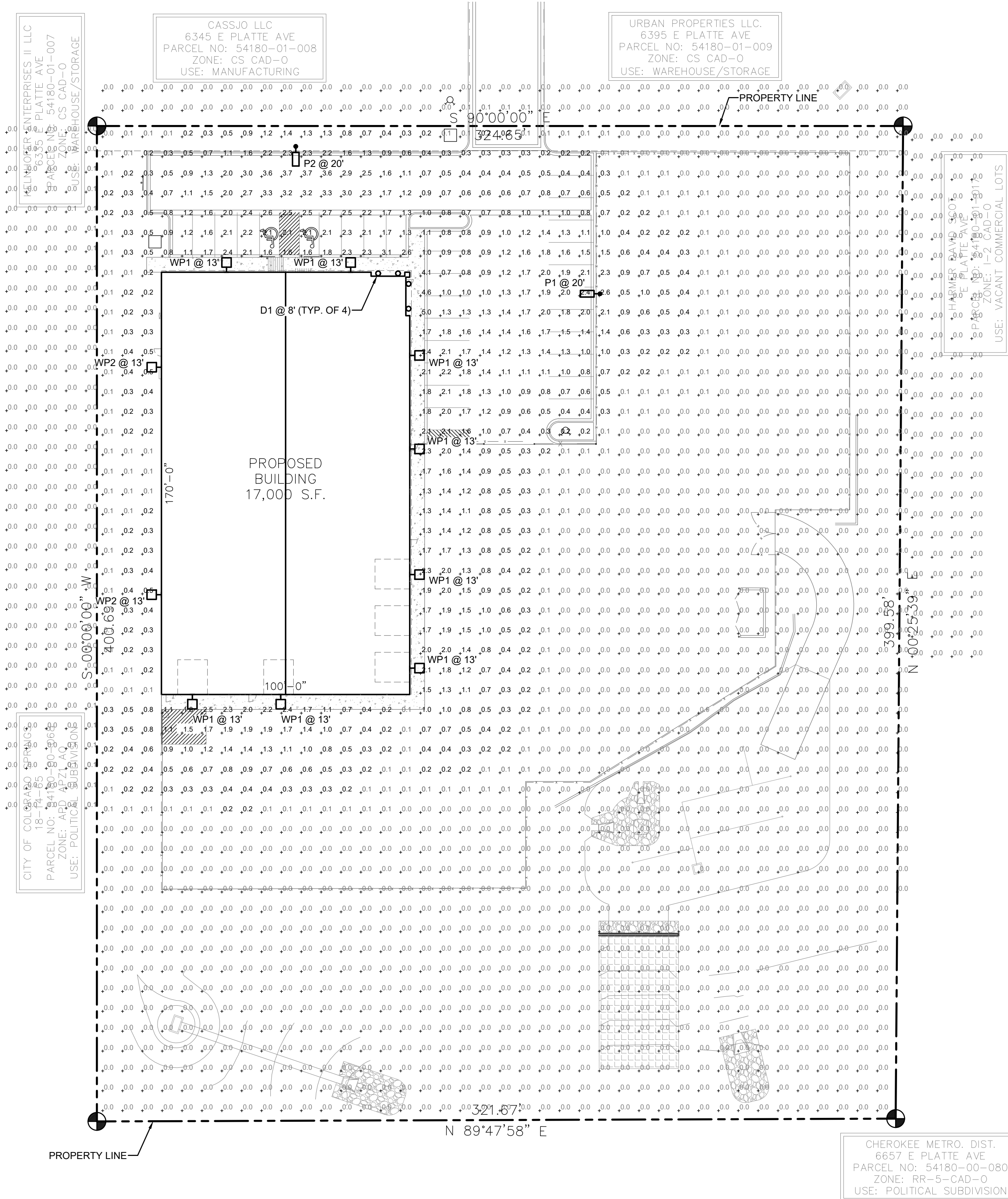


CALCULATION ZONE STATISTICS						
DESCRIPTION	SYMBOL (fc)	AVERAGE (fc)	MAXIMUM (fc)	MINIMUM (fc)	MAX./MIN. (fc)	AVG./MIN. (fc)
PARKING LOT	+	1.4	3.7	0.2	18.5:1	7.0:1
TO PROPERTY LINE	+	0.3	5.0	0.0	N/A	N/A

LIGHT FIXTURE SCHEDULE									
MARK	MANUF.	MODEL	LAMP		MOUNTING	DESCRIPTION	VOLTAGE	TOTAL WATTS	NOTES
			QTY.	WATT					
D1	LITHONIA	LDN6 35/15 L06AR LSS	1	17.5	LED	RECESSED	120/277	17.5	
P1	LITHONIA	DSX1 LED P2 40K TFM MVOLT	1	70.0	LED	POLE @ 20'-0"	120/277	70.0	
P2	LITHONIA	DSX1 LED P2 40K BLC MVOLT	1	70.0	LED	POLE @ 20'-0"	120/277	70.0	
WP1	LITHONIA	WDGE2 LED P3 40K 80CRI T4M	1	32.1	LED	SURFACE	120/277	32.1	
WP2	LITHONIA	WDGE2 LED P0 40K 80CRI T2M	1	6.9	LED	SURFACE	120/277	6.9	



4 LDN6 DOWNLIGHT (D1)
ES0.1 SCALE: NONE

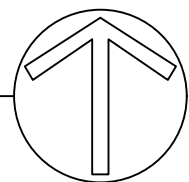


3 WDGE2 WALLPACK (WP1 - WP2)
ES0.1 SCALE: NONE



2 DSX1 AREA LUMINAIRE (P1 - P3)
ES0.1 SCALE: NONE

1 SITE PHOTOMETRIC PLAN
ES0.1 SCALE: 1"=30'-0"



HAMMERS

CONSTRUCTION INC.

COMMERCIAL GENERAL CONTRACTORS SPECIALIZING IN DESIGN/BUILD

PRESIDENT: STEVE R. HAMMERS

VICE PRES: DAVID J. HAMMERS

1411 WOOLSEY HEIGHTS

COLORADO SPRINGS, CO 80915

(719) 570-1599 FAX (719) 570-7008

www.hammersconstruction.com

THIS DRAWING CONTAINS MATERIAL & INFORMATION WHICH MAY NOT BE REPRODUCED WITHOUT WRITTEN CONSENT OF HAMMERS CONSTRUCTION, INC. THESE DRAWINGS ARE INTENDED TO BE USED ONLY BY HAMMERS CONSTRUCTION & ITS REPRESENTATIVES. THESE DRAWINGS HAVE NOT BEEN PREPARED FOR ANY OTHER PURPOSE THAN TO INDICATE THE GENERAL FEATURES AND PLACEMENT OF THE PROPOSED PROJECT. COPYRIGHT © 2023 HAMMERS CONSTRUCTION

WIRENUT

HOME SERVICES

6365 E PLATTE AVE.

COLORADO SPRINGS, CO 80915

EL PASO, COLORADO

mcShea

Consulting, LLC

MECHANICAL • ELECTRICAL • PLUMBING

1800 S. WILLOW STREET, SUITE 200

COLORADO SPRINGS, CO 80907

mcSheaconsulting.com

Project 23-7137

COLORADO REGISTERED PROFESSIONAL ENGINEER

102807

2023/05/15

DATE: MAY 15, 2023

DRAWN BY: C. FORRESTER

PROJ. MNGR: J. BUTLER


SCALE: SEE PLAN

APPROVED BY: MRM

JOB NO: 1280

RESUBMITTALS:

ES0.1



FEATURES & SPECIFICATIONS

INTERIOR USE – Spatial applications include corridors, lobbies, conference rooms and private offices.

CONSTRUCTION – Constructed from extruded aluminum, powder-coated injection blow and extruded diecast anodized zinc alloy components. Reflector is constructed by mirror-tempered.

Interchangeable magnetic ballast with standard ballast hangers provided for 1" and 4" diameters.

Two-dimensional 1" x 4" surface is finished by anodized aluminum construction. Capacity 141, 414, 816, 12, 24, 36, 48, 60, 72, 84, 96, 108, 120, 144, 168, 180, 216, 240, 270, 300, 324, 360, 396, 432, 468, 504, 540, 576, 612, 648, 684, 720, 756, 792, 828, 864, 900, 936, 972, 1008, 1044, 1080, 1116, 1152, 1188, 1224, 1260, 1296, 1332, 1368, 1404, 1440, 1476, 1512, 1548, 1584, 1620, 1656, 1692, 1728, 1764, 1800, 1836, 1872, 1908, 1944, 1980, 2016, 2052, 2088, 2124, 2160, 2196, 2232, 2268, 2304, 2340, 2376, 2412, 2448, 2484, 2520, 2556, 2592, 2628, 2664, 2700, 2736, 2772, 2808, 2844, 2880, 2916, 2952, 2988, 3024, 3060, 3096, 3132, 3168, 3204, 3240, 3276, 3312, 3348, 3384, 3420, 3456, 3492, 3528, 3564, 3600, 3636, 3672, 3708, 3744, 3780, 3816, 3852, 3888, 3924, 3960, 3996, 4032, 4068, 4104, 4140, 4176, 4212, 4248, 4284, 4320, 4356, 4392, 4428, 4464, 4500, 4536, 4572, 4608, 4644, 4680, 4716, 4752, 4788, 4824, 4860, 4896, 4932, 4968, 5004, 5040, 5076, 5112, 5148, 5184, 5220, 5256, 5292, 5328, 5364, 5400, 5436, 5472, 5508, 5544, 5580, 5616, 5652, 5688, 5724, 5760, 5796, 5832, 5868, 5904, 5940, 5976, 6012, 6048, 6084, 6120, 6156, 6192, 6228, 6264, 6300, 6336, 6372, 6408, 6444, 6480, 6516, 6552, 6588, 6624, 6660, 6696, 6732, 6768, 6804, 6840, 6876, 6912, 6948, 6984, 7020, 7056, 7092, 7128, 7164, 7200, 7236, 7272, 7308, 7344, 7380, 7416, 7452, 7488, 7524, 7560, 7596, 7632, 7668, 7704, 7740, 7776, 7812, 7848, 7884, 7920, 7956, 7992, 8028, 8064, 8100, 8136, 8172, 8208, 8244, 8280, 8316, 8352, 8388, 8424, 8460, 8496, 8532, 8568, 8604, 8640, 8676, 8712, 8748, 8784, 8820, 8856, 8892, 8928, 8964, 9000, 9036, 9072, 9108, 9144, 9180, 9216, 9252, 9288, 9324, 9360, 9396, 9432, 9468, 9504, 9540, 9576, 9612, 9648, 9684, 9720, 9756, 9792, 9828, 9864, 9900, 9936, 9972, 10008, 10044, 10080, 10116, 10152, 10188, 10224, 10260, 10296, 10332, 10368, 10404, 10440, 10476, 10512, 10548, 10584, 10620, 10656, 10692, 10728, 10764, 10800, 10836, 10872, 10908, 10944, 10980, 11016, 11052, 11088, 11124, 11160, 11196, 11232, 11268, 11304, 11340, 11376, 11412, 11448, 11484, 11520, 11556, 11592, 11628, 11664, 11700, 11736, 11772, 11808, 11844, 11880, 11916, 11952, 11988, 12024, 12060, 12096, 12132, 12168, 12204, 12240, 12276, 12312, 12348, 12384, 12420, 12456, 12492, 12528, 12564, 12600, 12636, 12672, 12708, 12744, 12780, 12816, 12852, 12888, 12924, 12960, 12996, 13032, 13068, 13104, 13140, 13176, 13212, 13248, 13284, 13320, 13356, 13392, 13428, 13464, 13500, 13536, 13572, 13608, 13644, 13680, 13716, 13752, 13788, 13824, 13860, 13896, 13932, 13968, 14004, 14040, 14076, 14112, 14148, 14184, 14220, 14256, 14292, 14328, 14364, 14400, 14436, 14472, 14508, 14544, 14580, 14616, 14652, 14688, 14724, 14760, 14796, 14832, 14868, 14904, 14940, 14976, 15012, 15048, 15084, 15120, 15156, 15192, 15228, 15264, 15300, 15336, 15372, 15408, 15444, 15480, 15516, 15552, 15588, 15624, 15660, 15696, 15732, 15768, 15804, 15840, 15876, 15912, 15948, 15984, 16020, 16056, 16092, 16128, 16164, 16200, 16236, 16272, 16308, 16344, 16380, 16416, 16452, 16488, 16524, 16560, 16596, 16632, 16668, 16704, 16740, 16776, 16812, 16848, 16884, 16920, 16956, 16992, 17028, 17064, 17100, 17136, 17172, 17208, 17244, 17280, 17316, 17352, 17388, 17424, 17460, 17496, 17532, 17568, 17604, 17640, 17676, 17712, 17748, 17784, 17820, 17856, 17892, 17928, 17964, 18000, 18036, 18072, 18108, 18144, 18180, 18216, 18252, 18288, 18324, 18360, 18396, 18432, 18468, 18504, 18540, 18576, 18612, 18648, 18684, 18720, 18756, 18792, 18828, 18864, 18900, 18936, 18972, 19008, 19044, 19080, 19116, 19152, 19188, 19224, 19260, 19296, 19332, 19368, 19404, 19440, 19476, 19512, 19548, 19584, 19620, 19656, 19692, 19728, 19764, 19800, 19836, 19872, 19908, 19944, 19980, 20016, 20052, 20088, 20124, 20160, 20196, 20232, 20268, 20304, 20340, 20376, 20412, 20448, 20484, 20520, 20556, 20592,

[illegible]


 LITHONIA LIGHTING
© 2014-2021 Acuity Brands Lighting, Inc. All rights reserved. Rev. 05/06/21

LITHNE

Emergency Battery Pack Options - Field Installable

Battery Model/Number	Voltage	Service Interval	Common Output at 120° Ambient Temp	Other
14-029-01.0	12V	120	500	Standby/Alert / Run/Full time
14-029-01.0	12V	60	1000	
14-029-01.0-01.0	12V	60	1000	Tip 24, Self-Diagnose
14-029-01.0-01.0	12V	60	1000	Tip 24, Self-Diagnose
14-029-01.0	220V	60	2000	Tip 25
14-029-01.0	220V	60	2000	Tip 24, Self-Diagnose
14-029-01.0-01.0	12V	60	1000	14-0400-A1, Input, Tip 24, Self-Diagnose
14-029-01.0-01.0	12V	60	1000	14-0400-A1, Input, Tip 24, Self-Diagnose

All the above are UL listed products that are certified for field install and extendable to the future.
 *Minimum difference between output and in put product applies to non-certified future mounting lengths.
 The 220V listed emergency operation requires separate 1000 Watts minimum emergency ballast.
 Please contact us at info@lithonia-lighting.com for any emergency battery related questions.



DOWLING1696 One Lithonia Way Cary, GA 27513 Phone 919-755-5289 (7/17) www.lithonia.com

© 2014-2021 Axay Brack Lighting, Inc. All rights reserved. Doc 6156623

WDGE2 LED

Architectural Wall Sconce

Visual Comfort Optic

Buy American

20

20

20

20

20

20

20

20

20

20

20

20

20

20

20

20

20

20

20

Control panel diagram showing On/Off, Dimmer, and Scene buttons. The diagram is a simplified representation of the physical control panel.

20

20

20

20

20

20

20

20

20

20

20

20

20

20

20

20

20

20

20

20

20

20

20

20

20

20

20

20

20

20

20

20

20

20

20

20

20

20

20

20

20

20

20

20

20

20

20

20

20

20

20

20

20

20

20

20

20

20

20

20

20

20

20

20

20

20

20

20

20

20

20

20

20

20


20

20

[illegible]

Performance Data									
Lumen Ambiance Temperature (L47) Temperatures									
Our Lumen Ambiance is dependent on ambient temperature but is always ambient temperature minus 40°C (104°F)									
Electrical Load									
(watts @ 120V)									
Power Factor		100W	150W	200W	250W	300W	350W	400W	450W
Standard Output (900lm @ 120V)	P1	30	100	24	246	226	223	219	215
	P2	34	70	202	219	218	212	212	210
	P3	36	100	190	206	210	214	218	219
	P4	38	120	192	198	206	212	216	217
	P5	40	140	198	194	207	213	215	215
Standard Output (900lm @ 120V)	P6	40	120	180	194	210	216	219	221
	P7	41	140	192	192	210	216	218	218
	P8	40	120	180	207	214	216	218	218
	P9	40	130	190	202	212	216	218	217
	P10	41	140	192	202	212	216	218	217
Reduced Output (600lm @ 120V)	P11	30	100	175	192	196	198	198	197
	P12	34	70	160	182	186	188	188	187
	P13	36	100	160	182	186	190	192	192
	P14	38	120	162	182	186	190	192	192
	P15	40	140	168	182	186	190	192	192

Projected LED Lumen Maintenance									
At 100% lumen output, Lumen Ambiance will maintain 90% of its initial output at 10,000 hours of use. Lumen Ambiance will maintain 80% of its initial output at 20,000 hours of use. Lumen Ambiance will maintain 70% of its initial output at 30,000 hours of use. Lumen Ambiance will maintain 60% of its initial output at 40,000 hours of use. Lumen Ambiance will maintain 50% of its initial output at 50,000 hours of use. Lumen Ambiance will maintain 40% of its initial output at 60,000 hours of use. Lumen Ambiance will maintain 30% of its initial output at 70,000 hours of use. Lumen Ambiance will maintain 20% of its initial output at 80,000 hours of use. Lumen Ambiance will maintain 10% of its initial output at 90,000 hours of use. Lumen Ambiance will maintain 5% of its initial output at 100,000 hours of use.									
At 100% lumen output, Lumen Ambiance will maintain 90% of its initial output at 10,000 hours of use. Lumen Ambiance will maintain 80% of its initial output at 20,000 hours of use. Lumen Ambiance will maintain 70% of its initial output at 30,000 hours of use. Lumen Ambiance will maintain 60% of its initial output at 40,000 hours of use. Lumen Ambiance will maintain 50% of its initial output at 50,000 hours of use. Lumen Ambiance will maintain 40% of its initial output at 60,000 hours of use. Lumen Ambiance will maintain 30% of its initial output at 70,000 hours of use. Lumen Ambiance will maintain 20% of its initial output at 80,000 hours of use. Lumen Ambiance will maintain 10% of its initial output at 90,000 hours of use. Lumen Ambiance will maintain 5% of its initial output at 100,000 hours of use.									
At 100% lumen output, Lumen Ambiance will maintain 90% of its initial output at 10,000 hours of use. Lumen Ambiance will maintain 80% of its initial output at 20,000 hours of use. Lumen Ambiance will maintain 70% of its initial output at 30,000 hours of use. Lumen Ambiance will maintain 60% of its initial output at 40,000 hours of use. Lumen Ambiance will maintain 50% of its initial output at 50,000 hours of use. Lumen Ambiance will maintain 40% of its initial output at 60,000 hours of use. Lumen Ambiance will maintain 30% of its initial output at 70,000 hours of use. Lumen Ambiance will maintain 20% of its initial output at 80,000 hours of use. Lumen Ambiance will maintain 10% of its initial output at 90,000 hours of use. Lumen Ambiance will maintain 5% of its initial output at 100,000 hours of use.									
At 100% lumen output, Lumen Ambiance will maintain 90% of its initial output at 10,000 hours of use. Lumen Ambiance will maintain 80% of its initial output at 20,000 hours of use. Lumen Ambiance will maintain 70% of its initial output at 30,000 hours of use. Lumen Ambiance will maintain 60% of its initial output at 40,000 hours of use. Lumen Ambiance will maintain 50% of its initial output at 50,000 hours of use. Lumen Ambiance will maintain 40% of its initial output at 60,000 hours of use. Lumen Ambiance will maintain 30% of its initial output at 70,000 hours of use. Lumen Ambiance will maintain 20% of its initial output at 80,000 hours of use. Lumen Ambiance will maintain 10% of its initial output at 90,000 hours of use. Lumen Ambiance will maintain 5% of its initial output at 100,000 hours of use.									
At 100% lumen output, Lumen Ambiance will maintain 90% of its initial output at 10,000 hours of use. Lumen Ambiance will maintain 80% of its initial output at 20,000 hours of use. Lumen Ambiance will maintain 70% of its initial output at 30,000 hours of use. Lumen Ambiance will maintain 60% of its initial output at 40,000 hours of use. Lumen Ambiance will maintain 50% of its initial output at 50,000 hours of use. Lumen Ambiance will maintain 40% of its initial output at 60,000 hours of use. Lumen Ambiance will maintain 30% of its initial output at 70,000 hours of use. Lumen Ambiance will maintain 20% of its initial output at 80,000 hours of use. Lumen Ambiance will maintain 10% of its initial output at 90,000 hours of use. Lumen Ambiance will maintain 5% of its initial output at 100,000 hours of use.									
At 100% lumen output, Lumen Ambiance will maintain 90% of its initial output at 10,000 hours of use. Lumen Ambiance will maintain 80% of its initial output at 20,000 hours of use. Lumen Ambiance will maintain 70% of its initial output at 30,000 hours of use. Lumen Ambiance will maintain 60% of its initial output at 40,000 hours of use. Lumen Ambiance will maintain 50% of its initial output at 50,000 hours of use. Lumen Ambiance will maintain 40% of its initial output at 60,000 hours of use. Lumen Ambiance will maintain 30% of its initial output at 70,000 hours of									

[illegible][illegible][illegible]

HAMMERS
CONSTRUCTION INC.

COMMERCIAL GENERAL CONTRACTORS SPECIALIZING IN DESIGN/BUILD

PRESIDENT: STEVE R. HAMMERS
VICE PRES: DAVID L. HAMMERS
1411 WOODLEY HEIGHTS
COLORADO SPRINGS, CO 80915
(719) 570-1599 FAX (719) 570-7008
www.hammersconstruction.com

THIS DRAWING CONTAINS MATERIAL & INFORMATION WHICH MAY NOT BE REPRODUCED WITHOUT WRITTEN CONSENT OF HAMMERS CONSTRUCTION, INC. THESE DRAWINGS ARE INTENDED TO BE USED ONLY BY HAMMERS CONSTRUCTION & ITS REPRESENTATIVES. THESE DRAWINGS HAVE NOT BEEN PREPARED FOR ANY OTHER PURPOSE THAN TO INDICATE THE GENERAL FEATURES AND PLACEMENT OF THE PROPOSED PROJECT. COPYRIGHT © 2023 HAMMERS CONSTRUCTION

WIRENUT
HOME SERVICES
6365 E PLATTE AVE.
COLORADO SPRINGS, CO 80915
EL PASO, COLORADO

mcShea consulting, LLC
MECHANICAL + ELECTRICAL + PLUMBING
4445 Northpark, Dr., Suite 200
Colorado Springs, CO 80907
mcSheaconsulting.com
Project 23-7137



DATE: MAY 15, 2023
DRAWN BY: C. FORRESTER
PROJ. MNGR: J. BUTLER
SCALE: SEE PLAN
APPROVED BY: MRM
JOB NO: 1280

RESUBMITTALS:

ES0.2