

Lighting Plan_V1.pdf Markup Summary

7/12/2022 4:02:53 PM (1)

LIGHT FIXTURE SCHEDULE			
NO.	SYMBOL	DESCRIPTION	QUANTITY
1	☐	Cloud+	1
2	☐	WireNut - Site Photometric-ES0.1	1

1. Cloud+
2. WireNut - Site Photometric-ES0.1

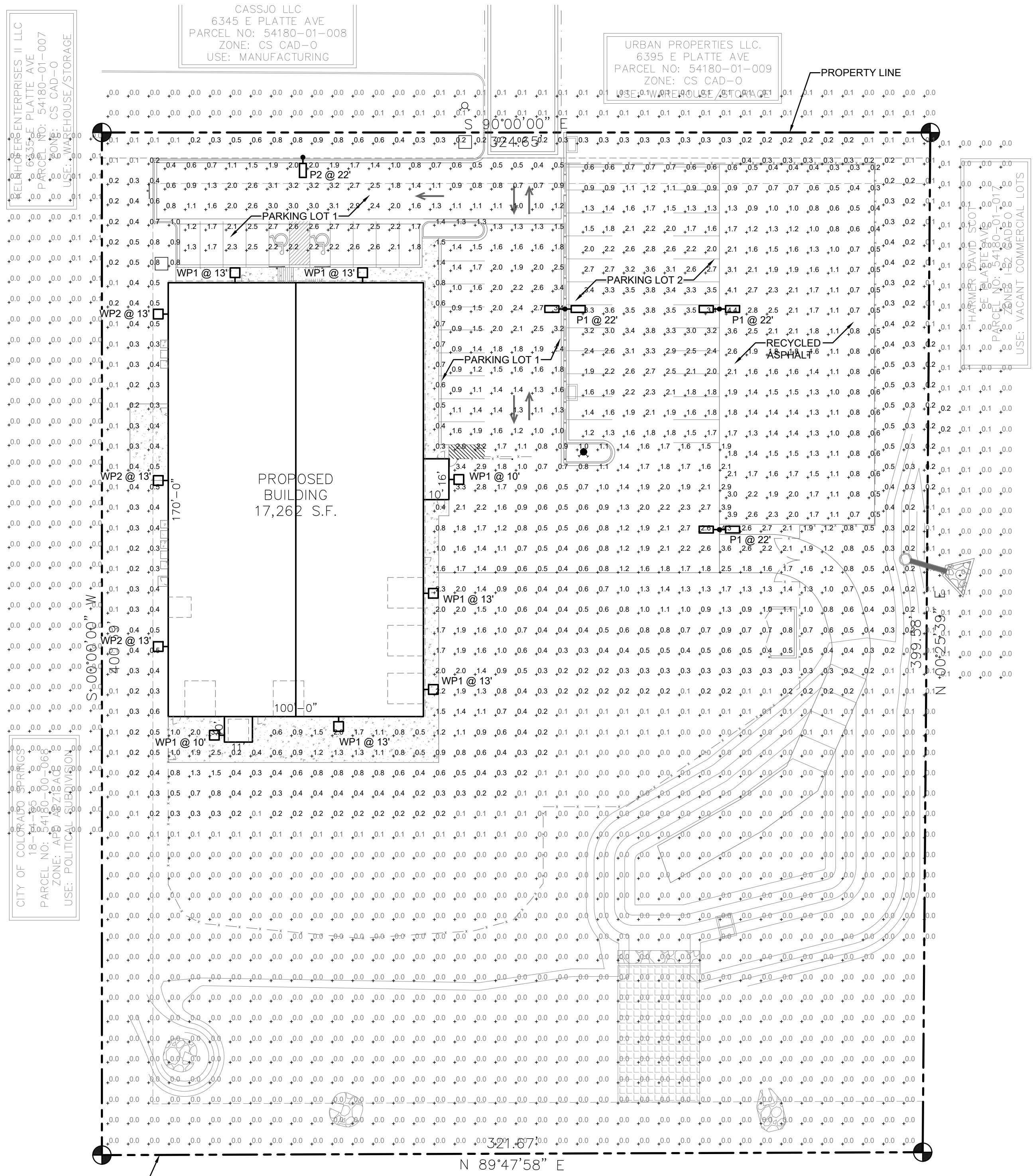
Subject: Cloud+
Page Label: [1] WireNut - Site Photometric-ES0.1
Author: Linda.Nguyen
Date: 7/12/2022 4:02:53 PM
Status:
Color: ■
Layer:
Space:

6.2.3 Lighting Height. No freestanding light fixtures shall be mounted higher than 15 feet, except parking lot light fixtures which shall be mounted no higher than 20 feet unless an alternative lighting proposal is approved in accordance with this Code.

CALCULATION ZONE STATISTICS						
DESCRIPTION	SYMBOL (fc)	AVERAGE (fc)	MAXIMUM (fc)	MINIMUM (fc)	MAX./MIN. (fc)	AVG./MIN. (fc)
PARKING LOT 1	+	1.7	3.4	0.4	8.5:1	4.3:1
PARKING LOT 2	+	2.2	3.8	0.6	6.3:1	3.7:1
RECYCLED ASPHALT	+	1.3	4.4	0.2	22.0:1	6.5:1
TO PROPERTY LINE	+	0.3	4.3	0.0	N/A	N/A

LIGHT FIXTURE SCHEDULE										
MARK	MANUF.	MODEL	QTY.	WATT	LAMP TYPE	MOUNTING	DESCRIPTION	VOLTAGE	TOTAL WATTS	NOTES
P2	LITHONIA	DSX1 LED P2 40K BLC MVOLT	1	70.0	LED	POLE @ 22'-0"	AREA LUMINAIRE	120/277	70.0	
WP1	LITHONIA	WDGE2 LED P3 40K 80CRI T4M	1	32.1	LED	SURFACE	WALLPACK	120/277	32.1	
WP2	LITHONIA	WDGE2 LED P0 40K 80CRI T2M	1	6.9	LED	SURFACE	WALLPACK	120/277	6.9	

6.2.3 Lighting
Height: No freestanding light fixtures shall be mounted higher than 15 feet, except parking lot light fixtures which shall be mounted no higher than 20 feet unless an alternative lighting proposal is approved in accordance with this Code.

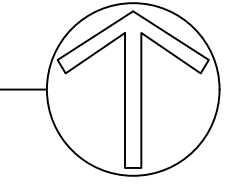


3 WDG2 WALLPACK (WP1 - WP2)
ES0.1 SCALE: NONE



2 DSX1 AREA LUMINAIRE (P1 - P3)
ES0.1 SCALE: NONE

1 SITE PHOTOMETRIC PLAN
ES0.1 SCALE: 1"=30'-0"



CLIENT:

Electric Service of Colorado
Commercial • Residential • Industrial
Service • Design
719-201-5596

THE INFORMATION, DRAWINGS, SPECIFICATIONS AND DESIGN CONTAINED HEREIN ARE PROTECTED BY COLORADO STATUTES AND THE 1976 UNITED STATES COPYRIGHT. THE RECIPIENT ACKNOWLEDGES THAT THE CONTENTS ARE PROPERTY OF ELECTRIC SERVICE OF COLORADO LLC AND THAT THESE SAME CONTENTS SHALL BE USED FOR CONSTRUCTION PURPOSES BY ELECTRIC SERVICE OF COLORADO LLC ONLY AND NOT COPIED, USED OR REPRODUCED IN WHOLE PART, FOR ANY OTHER PURPOSES WITHOUT PERMISSION IN WRITING FROM ELECTRIC SERVICE OF COLORADO LLC. ALL RIGHTS RESERVED.

McShea Consulting, LLC
MECHANICAL + ELECTRICAL + PLUMBING
4445 Northpark Dr. Suite 200
Colorado Springs, CO 80907
mcsheac consulting.com
Project #: 22-6655

PROFESSIONAL ENGINEER
06.13.2022

OWNERSHIP OF INSTRUMENTS OF SERVICE
All Drawings, Reports, Plans, Specifications, Computer Files (including CAD files), field information, notes, sketches, and other design materials prepared by the Engineer and his/her consultants as instruments of service shall remain the property of the Engineer. The Engineer shall retain all common law, statutory and other reserved rights, including the Copyright therein.

WIRENUT
HOME SERVICES
6365 E PLATTE AVE.
COLORADO SPRINGS, CO 80915
EL PASO COUNTY, COLORADO

FULL SET ISSUE HISTORY:

1	CONSTRUCTION DOC.	06.13.22
---	-------------------	----------

SHEET REVISION:

PROJECT #: 22-6655
DRAWN BY: CCF
CHECKED BY: MRM

SHEET
ES0.1

