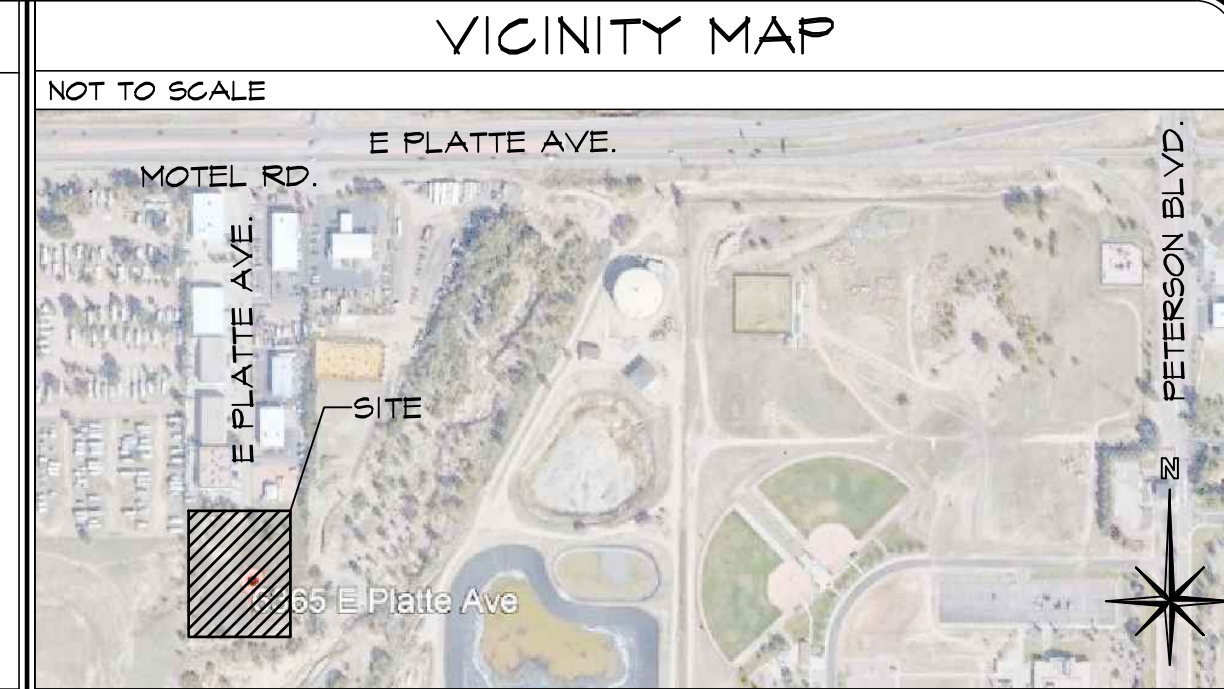


Approved
Kylie Bagley
12/27/2023
El Paso County Planning and Community



DRAWING INDEX	
1 OF 40 - SITE PLAN, PROJECT INFO. & DRAWING INDEX	CN02 - 21 OF 40 - CONSTRUCTION PLAN NOTES & DETAILS
2 OF 40 - SITE PLAN DETAILS	S101 - 22 OF 40 - DEMOLITION PLAN
3 OF 40 - WATER PLAN & USF COVER & INDEX	S102 - 23 OF 40 - STREET IMPROVEMENT PLAN
4 OF 40 - WATER PLAN & PROFILES	S103 - 24 OF 40 - STRIPPING & SIGNAGE PLAN
5 OF 40 - WATER DETAILS	ST01 - 25 OF 40 - STORM SEWER PLAN & PROFILE
6 OF 40 - SEWER PLAN TITLE SHEET	ST02 - 26 OF 40 - STORM SEWER PLAN & PROFILE
7 OF 40 - SANITARY SEWER FORCE MAIN PLAN & PROFILES	ST03 - 27 OF 40 - STORM SEWER PLAN & PROFILE
8 OF 40 - SEWER DETAILS	ST04 - 28 OF 40 - STORM SEWER NOTES & DETAILS
9 OF 40 - GEC PLAN COVER & INDEX	ST05 - 29 OF 40 - STORM SEWER NOTES & DETAILS
10 OF 40 - DETAILED GRADING	ST06 - 30 OF 40 - STORM SEWER DETAILS
11 OF 40 - DETAILED GRADING DETAILS	ST07 - 31 OF 40 - STORM SEWER DETAILS
12 OF 40 - INITIAL GEC PLAN	ST08 - 32 OF 40 - STORM SEWER DETAILS
13 OF 40 - INTERIM GEC PLAN	BMP01 - 33 OF 40 - OUTLET STRUCTURE POND I DETAILS
14 OF 40 - FINAL GEC PLAN	BMP02 - 34 OF 40 - OUTLET STRUCTURE POND I DETAILS
15 OF 40 - GEC PLAN DETAILS	BMP03 - 35 OF 40 - OUTLET STRUCTURE POND I DETAILS
16 OF 40 - GEC PLAN DETAILS	L11 - 36 OF 40 - LANDSCAPE PLAN & SCHEDULE
17 OF 40 - GEC PLAN DETAILS	L12 - 37 OF 40 - LANDSCAPE PLAN & SCHEDULE
18 OF 40 - GEC PLAN DETAILS	ES01 - 38 OF 40 - PHOTOMETRIC LIGHTING SCHEDULES
19 OF 40 - GEC PLAN DETAILS	ES02 - 39 OF 40 - PHOTOMETRIC LIGHTING SCHEDULES
20 OF 40 - CONSTRUCTION PLAN TITLE SHEET	40 OF 40 - BUILDING ELEVATIONS

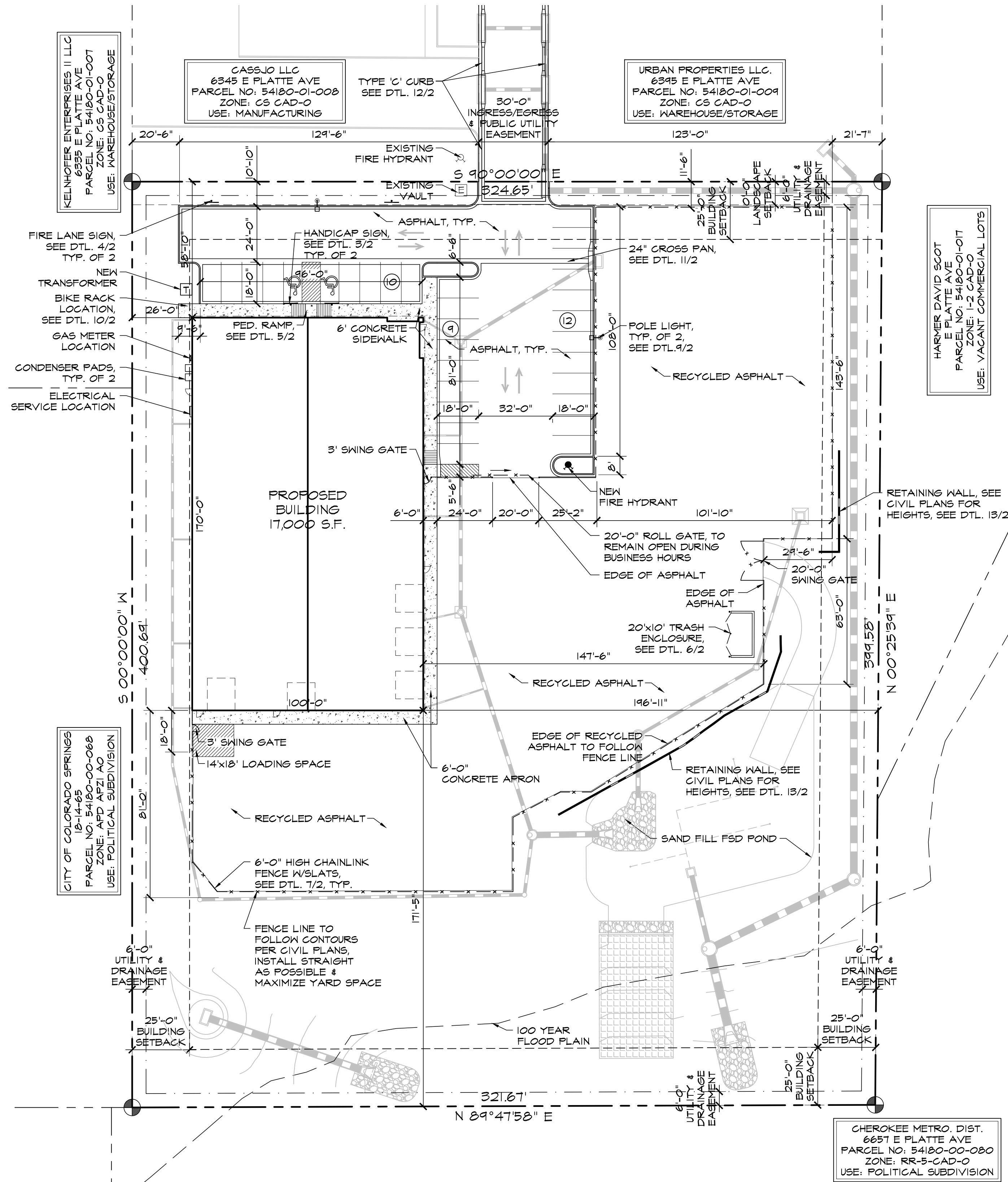


PROJECT INFORMATION	
PROPERTY INFORMATION	
OWNER NAME:	TRENTON B URBAN
	6365 E PLATTE AVE
	COLORADO SPRINGS, CO 80915
LEGAL DESCRIPTION:	
	LOT 5 CLEARWAY
PARCEL NUMBER:	54180-01-005
ZONING:	CS CAD-O
LOT SIZE:	129,304 SF (2.97 ACRES)
CURRENT USE:	VACANT COMMERCIAL LOTS
FLOODPLAIN STATEMENT:	ZONE X (MAP NO: 0804C01546, DATED DECEMBER 01, 2018)
BUILDING INFORMATION	
NEW BUILDING AREA:	17,000 SF
BUILDING OCCUPANCY:	B/S-2
TYPE OF CONSTRUCTION:	II-B
FIRE SYSTEMS:	SPRINKLED
AREA SEPARATION WALLS:	NONE
ZONING CODE STUDY	
EXISTING PRINCIPAL USE:	VACANT OFFICE & WAREHOUSE
PROPOSED USE:	
STRUCTURAL COVERAGE OF LOT:	
PAVEMENT COVERAGE:	13%
NEW BUILDING STRUCTURAL HEIGHT:	54%
FRONT YARD SETBACK:	20'-8"
SIDE YARD SETBACK:	25'-0"
REAR YARD SETBACK:	25'-0"
REQUIRED PARKING SPACES	
WAREHOUSE- 1/1000 SF	
15,200 / 1,000 SF	15
OFFICE- 1/200 SF	
1,800 / 200 SF	9
H.C.-1 SPACE/25 REQ'D	1
TOTAL PARKING SPACES REQUIRED:	24
TOTAL PARKING PROVIDED:	31
STANDARD SPACES PROVIDED:	24
H.C. SPACES PROVIDED:	2
BICYCLE SPACES REQUIRED:	4
LOADING SPACE PROVIDED:	1 (14'x18')
(SEE DETAIL 2/2 FOR DIMENSIONS)	
DEVELOPMENT SCHEDULE	
CONSTRUCTION:	SUMMER 2023
LANDSCAPING:	SPRING 2024
DEVELOPMENT APPLICANT	
COMPANY:	HAMMERS CONSTRUCTION, INC.
	1411 WOOLSEY HEIGHTS
	COLORADO SPRINGS, CO 80915
PHONE NUMBER:	(719)-570-1599
FAX NUMBER:	(719)-570-1008
APPLICANT NAME:	LISA PETERSON
APPLICANT E-MAIL:	lpeterson@hammersconstruction.com

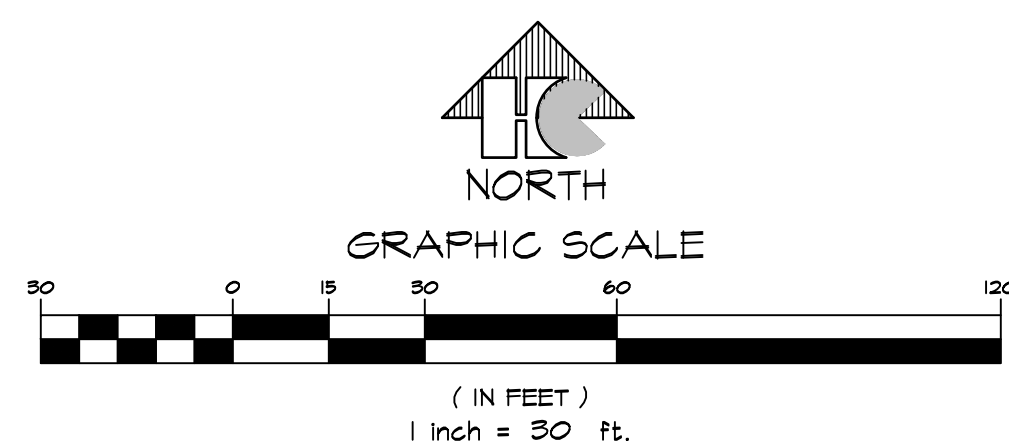
SITE LEGEND	
---	PROPERTY LINE
---	RIGHT OF WAY
---	BUILDING SETBACK
---	LANDSCAPE SETBACK
---	UTILITY/DRAINAGE EASEMENT
---	ELECTRICAL EASEMENT
---	PHONE EASEMENT
---	ACCESS EASEMENT
---	NEW CHAINLINK FENCE
---	STORM SEWER LINE
---	RETAINING WALL
---	NEW SIDEWALK LOCATIONS
---	W/ CONTROL JOINTS @ 5'-0" O.C.
●	PROPERTY CORNER
→	TRAFFIC FLOW
□	WALL PACK LIGHTING
+	SIGN
○	PROPOSED LIGHT POLE
□	ELECTRICAL TRANSFORMER
○	EXISTING FIRE HYDRANT
●	PROPOSED FIRE HYDRANT

PCD DIRECTOR APPROVAL	
DATE: JUN. 13, 2022	
DRAWN BY: J. CANTERBERRY	
PROJ. MGR: J. BUTLER	
SCALE: SEE PLAN	
APPROVED BY:	
JOB NO: 1280	

RESUBMITTALS:	
△	9-23-22/ COMMENTS 1-15-22
△	6-23-23/ COMMENTS 10-23-22
△	
△	
△	
△	



① SITE PLAN
SCALE: 1"=30'-0"



HAMMERS CONSTRUCTION INC.
COMMERCIAL GENERAL CONTRACTORS SPECIALIZING IN DESIGN/BUILD
PRESIDENT: STEVE R. HAMMERS
VICE PRES: DAVID J. HAMMERS
1411 WOOLSEY HEIGHTS
COLORADO SPRINGS, CO 80915
(719) 570-1599 FAX (719) 570-7008
www.hammersconstruction.com

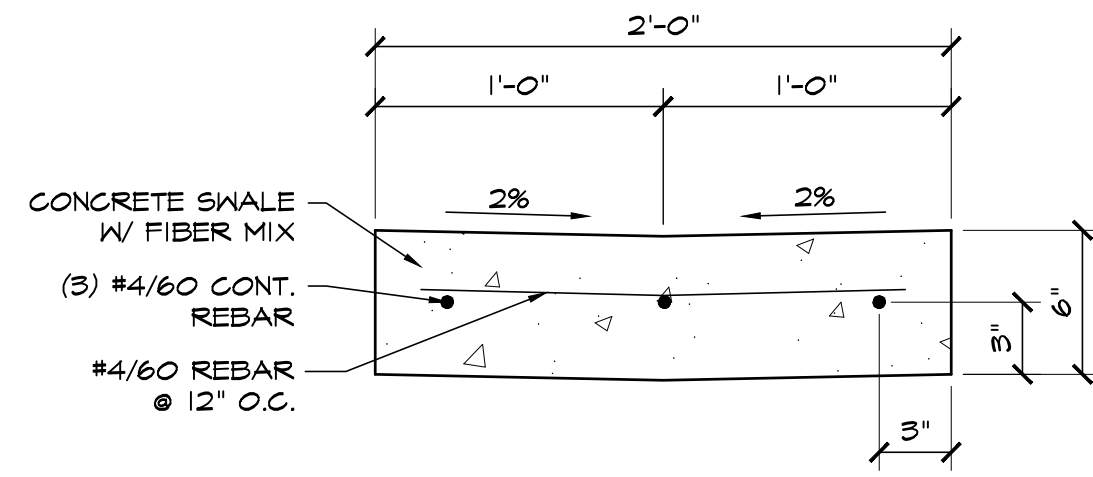
THIS DRAWING CONTAINS MATERIAL & INFORMATION WHICH MAY NOT BE REPRODUCED WITHOUT WRITTEN CONSENT OF HAMMERS CONSTRUCTION, INC. THESE DRAWINGS ARE INTENDED TO BE USED ONLY BY HAMMERS CONSTRUCTION & ITS REPRESENTATIVES. THESE DRAWINGS HAVE NOT BEEN PREPARED FOR ANY OTHER PURPOSE THAN TO INDICATE THE GENERAL FEATURES AND PLACEMENT OF THE PROPOSED PROJECT. COPYRIGHT © 2023 HAMMERS CONSTRUCTION

WIRENUT HOME SERVICES
6365 E PLATTE AVE.
COLORADO SPRINGS, CO 80915
EL PASO, COLORADO

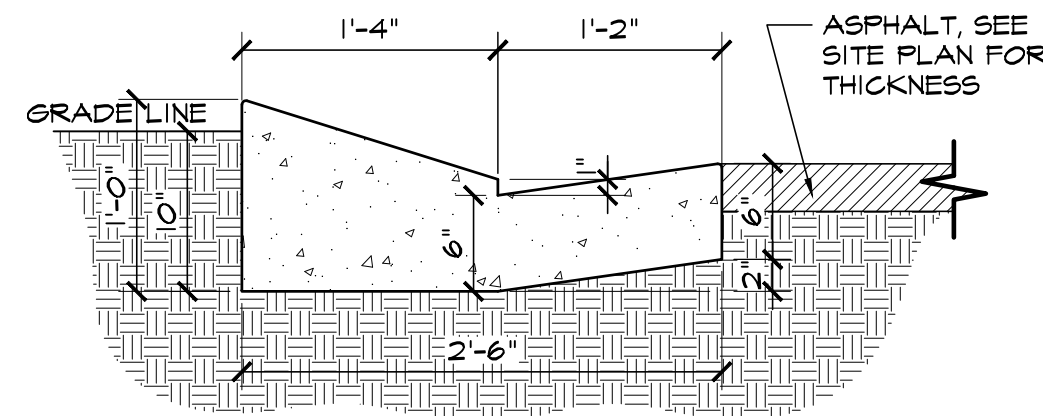
DATE: JUN. 13, 2022
DRAWN BY: J. CANTERBERRY
PROJ. MGR: J. BUTLER
SCALE: SEE PLAN
APPROVED BY:
JOB NO: 1280

DATE: JUN. 13, 2022
DRAWN BY: J. CANTERBERRY
PROJ. MGR: J. BUTLER
SCALE: SEE PLAN
APPROVED BY:
JOB NO: 1280

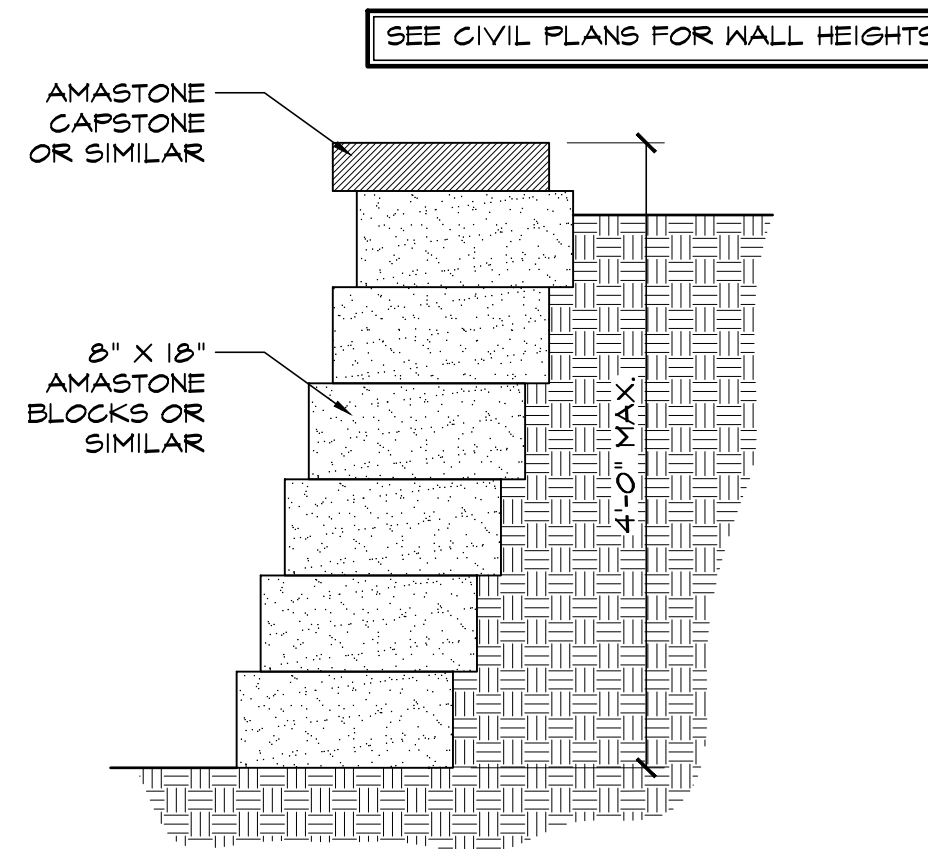
RESUBMITTALS:	
△	9-23-22/ COMMENTS 1-15-22
△	6-23-23/ COMMENTS 10-23-22
△	
△	
△	
△	



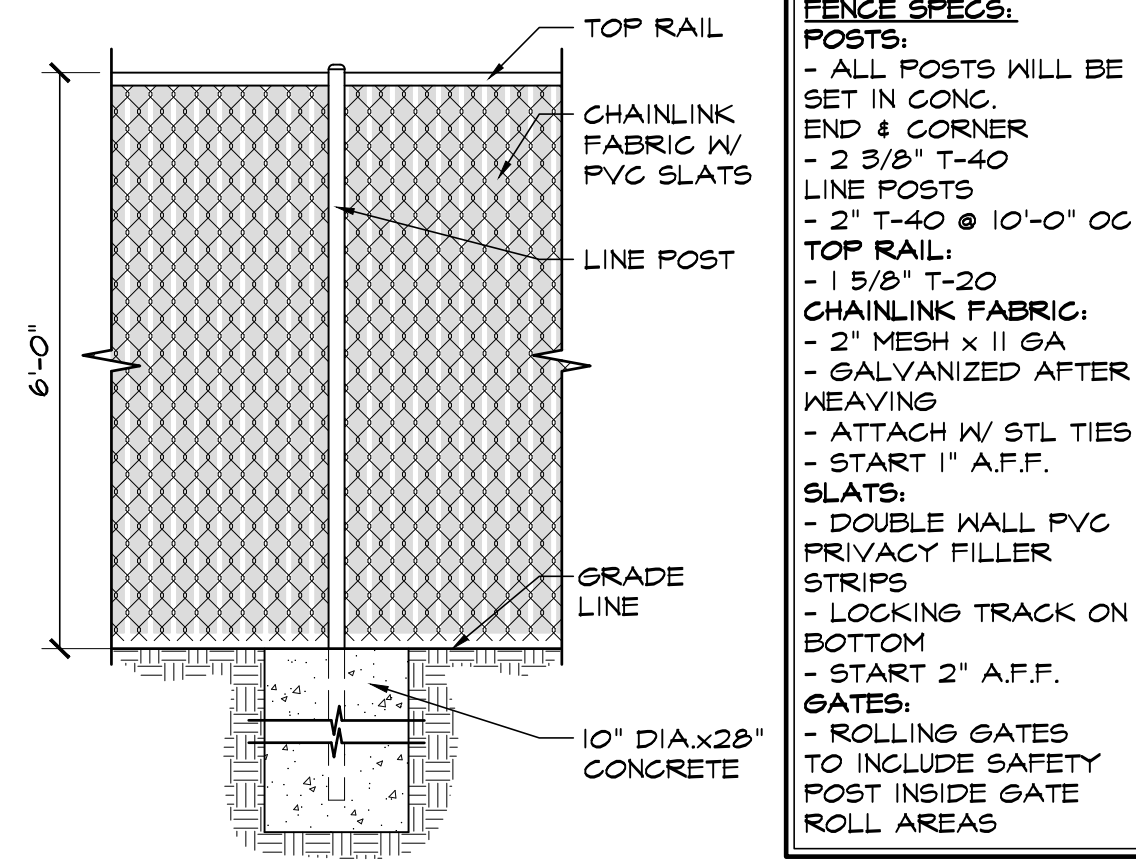
11 2'-0" CROSSSPAN DETAIL
SCALE: 1/2"=1'-0"



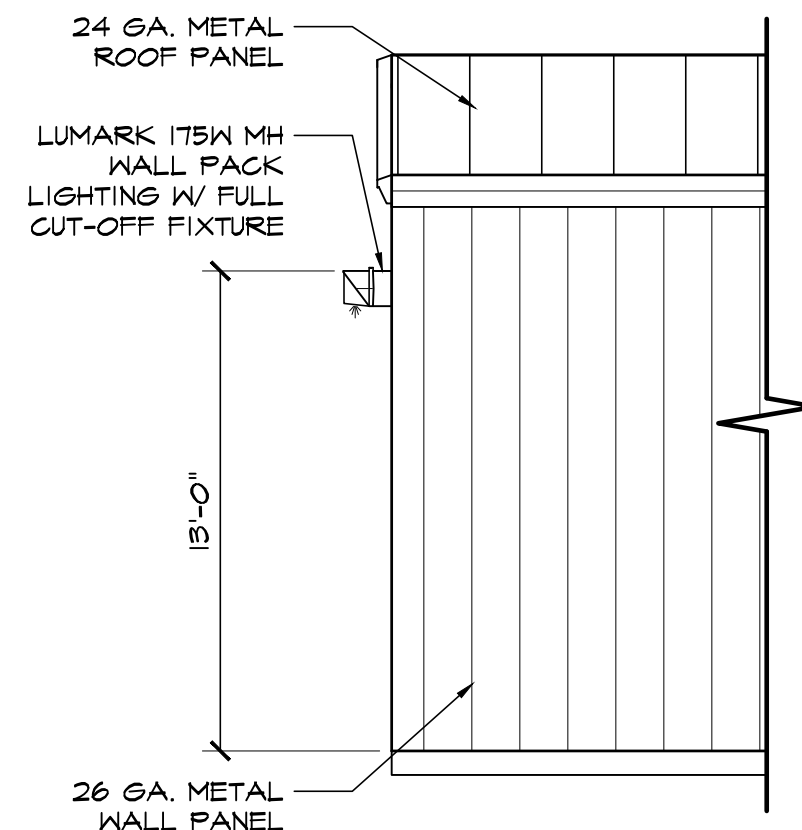
12 EPC TYPE C CURB
SCALE: 1"=1'-0"



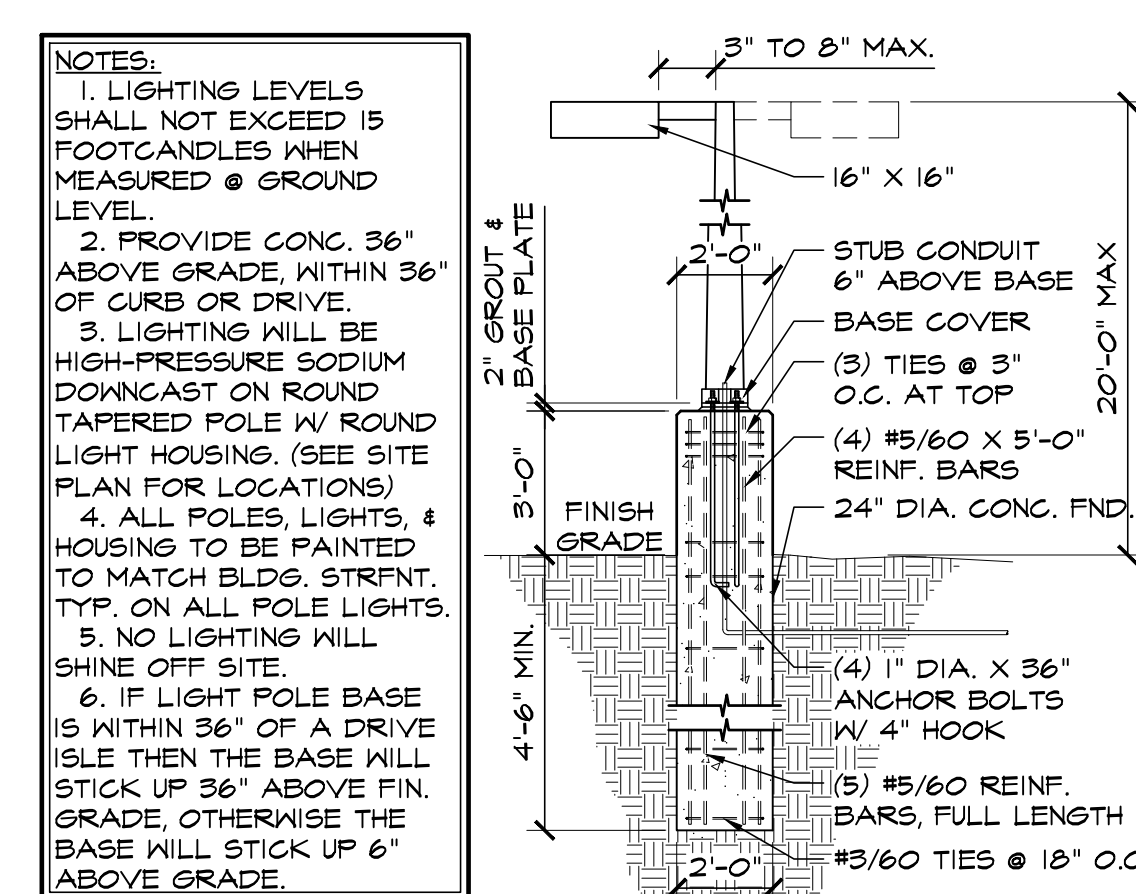
13 RETAINING WALL DETAIL
SCALE: 3/4"=1'-0"



7 CHAINLINK FENCE DETAIL
SCALE: 1/2"=1'-0"

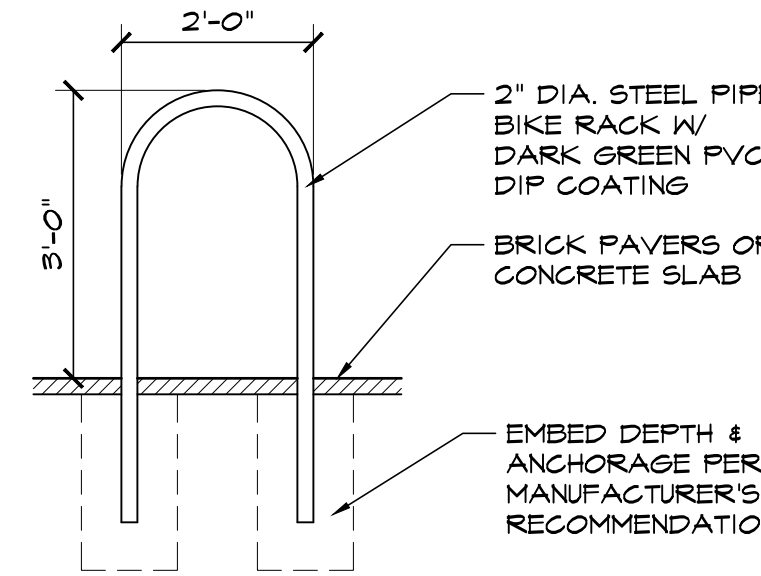


8 WALL PACK LIGHT DETAIL
SCALE: 1/4"=1'-0"

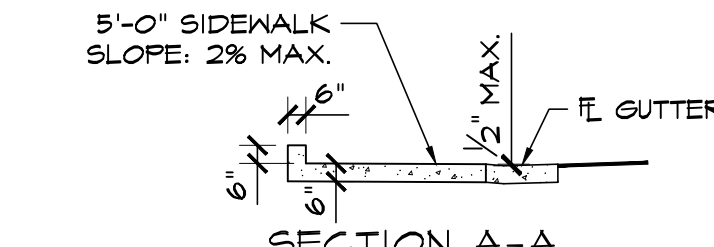
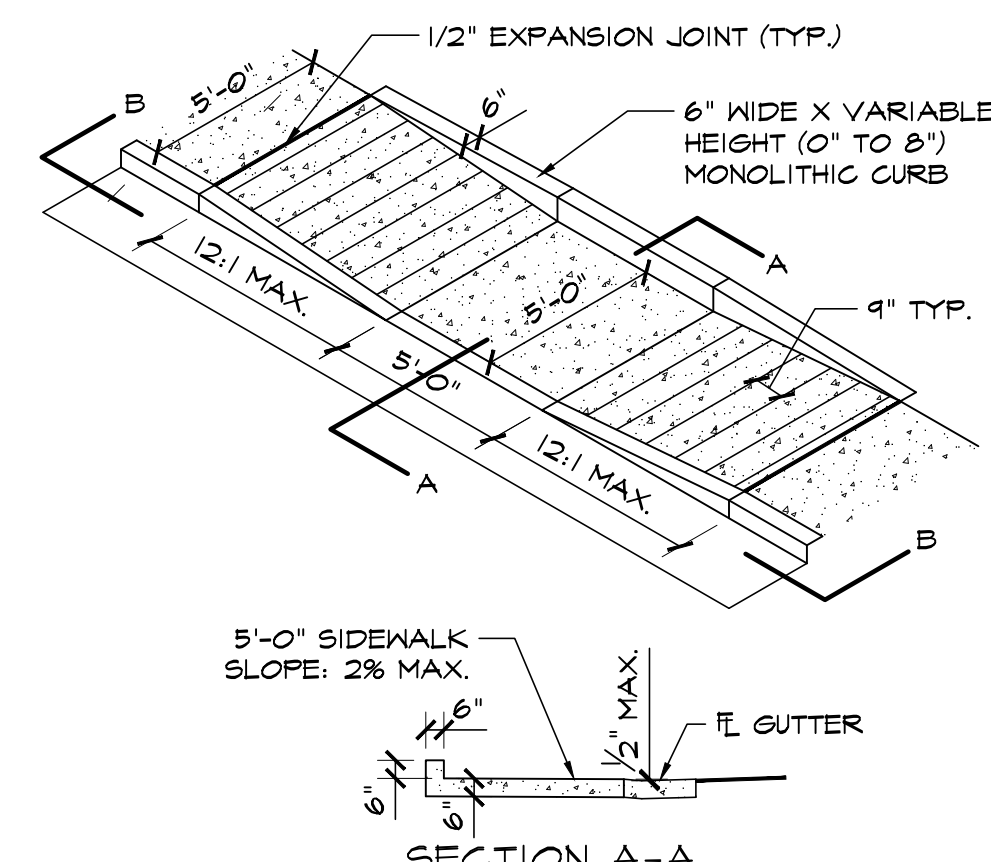


9 LIGHT POLE BASE DETAIL
SCALE: 1/4"=1'-0"

NOTE: PROVIDE RACKS FOR 4 BIKE SPACES, PER EPC REQUIREMENTS

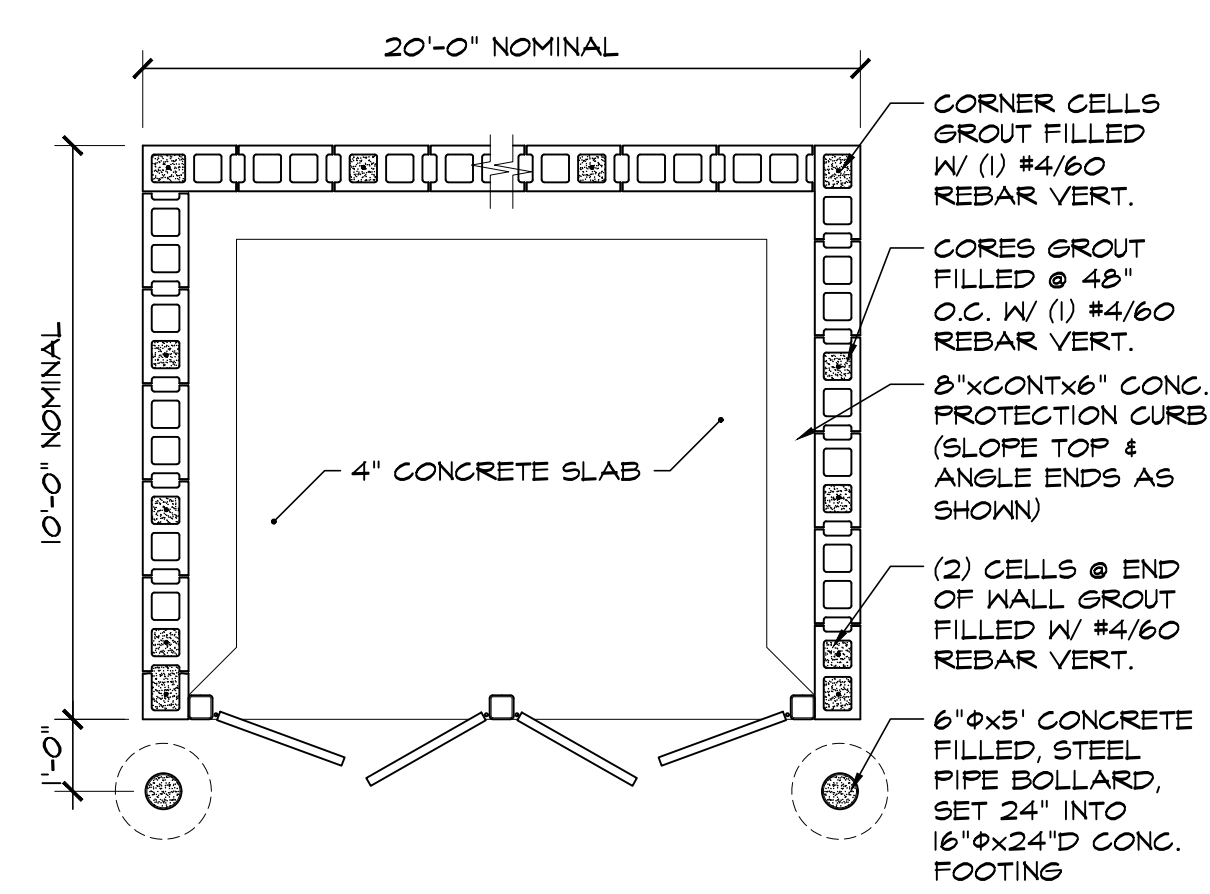


10 BIKE RACK DETAIL
SCALE: 1/2"=1'-0"

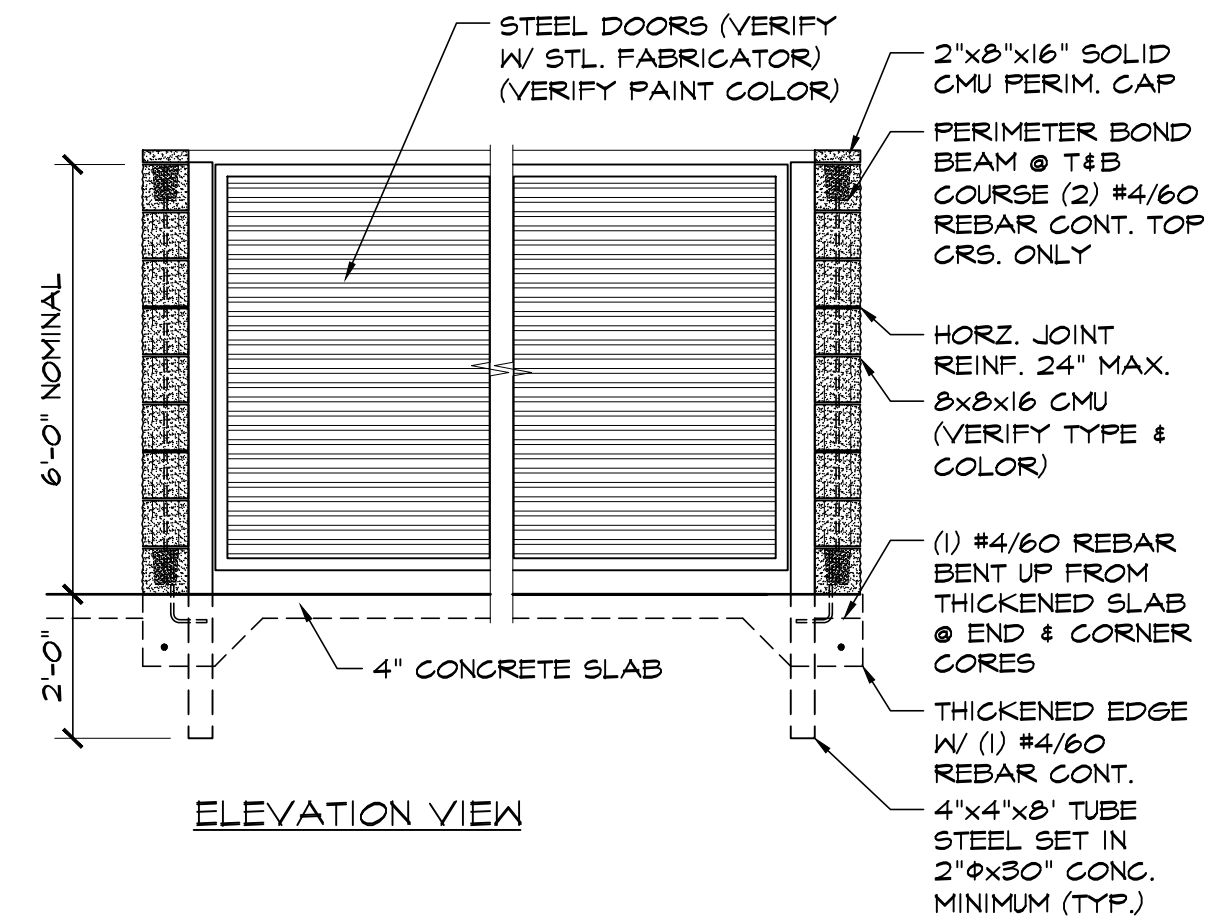


GENERAL NOTES:
1. ALL WORK TO BE DONE IN ACCORDANCE WITH CURRENT EL PASO COUNTY ENGINEERING DIVISION STANDARD SPECIFICATIONS.
2. SIDEWALK CROSS-SLOPE: 1/4"/FT.
3. CONTRACTOR TO OBTAIN REQUIRED CONCRETE PERMIT AND RAMP PERMIT AT ENGINEERING DIVISION INSPECTION OFFICE PRIOR TO CONSTRUCTION.
4. CONTRACTOR TO NOTIFY ENGINEERING DIVISION INSPECTION OFFICE AT LEAST 24 HOURS PRIOR TO PLACEMENT OF ANY CONCRETE.
5. THE RAMP SURFACES SHALL BE FINISHED WITH A COARSE BROOM FINISH, PARALLEL WITH THE SCORING, IN ACCORDANCE WITH SECTION 504.02E OF THE STANDARD SPECIFICATIONS.
6. CONTRACTOR SHALL STAMP THE COMPANY NAME AND CONSTRUCTION DATE WITHIN THE PEDESTRIAN RAMP AREA.
7. PEDESTRIAN TRAVELWAY AND/OR LOCATION OF EXISTING OR FUTURE PEDESTRIAN RAMPS ON OPPOSITE CORNERS SHALL BE REVIEWED BEFORE CONSTRUCTING NEW RAMPS. NEW RAMPS SHALL ALIGN WITH EXISTING RAMPS AND PEDESTRIAN TRAVELWAY.
8. SHADED AREA: 6" THICK CONCRETE

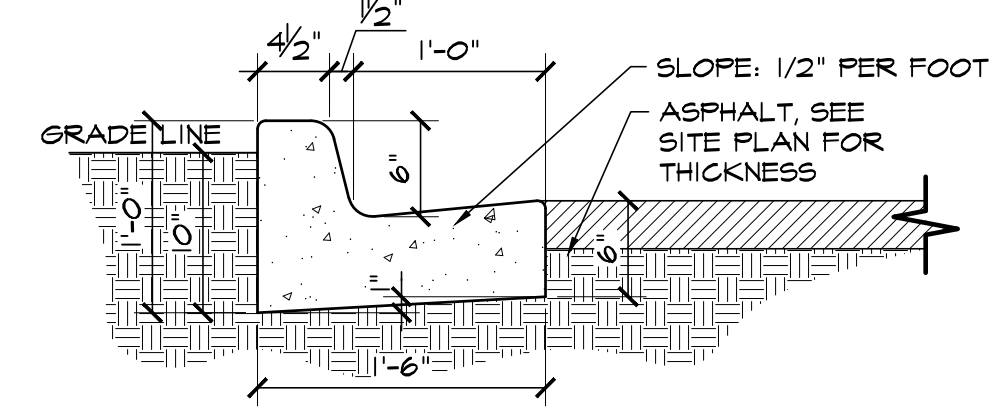
5 PEDESTRIAN RAMP DETAIL D-8J
SCALE: 3/16"=1'-0"



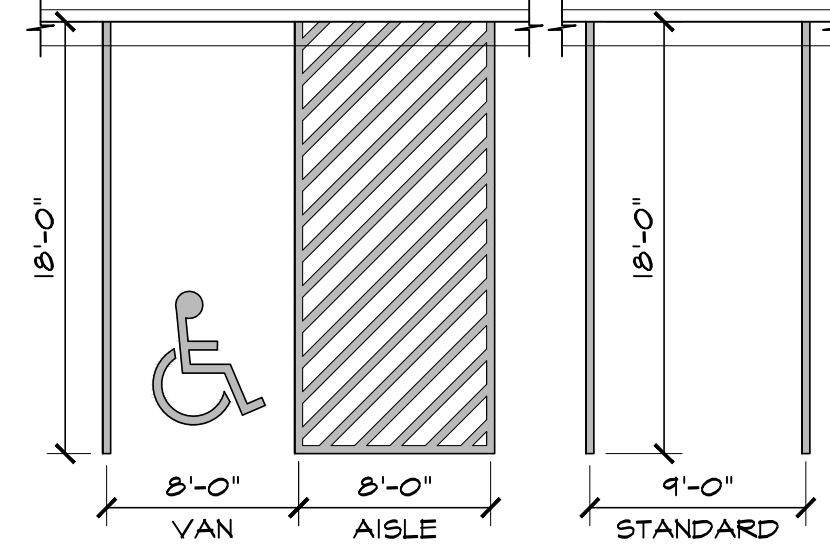
PLAN VIEW



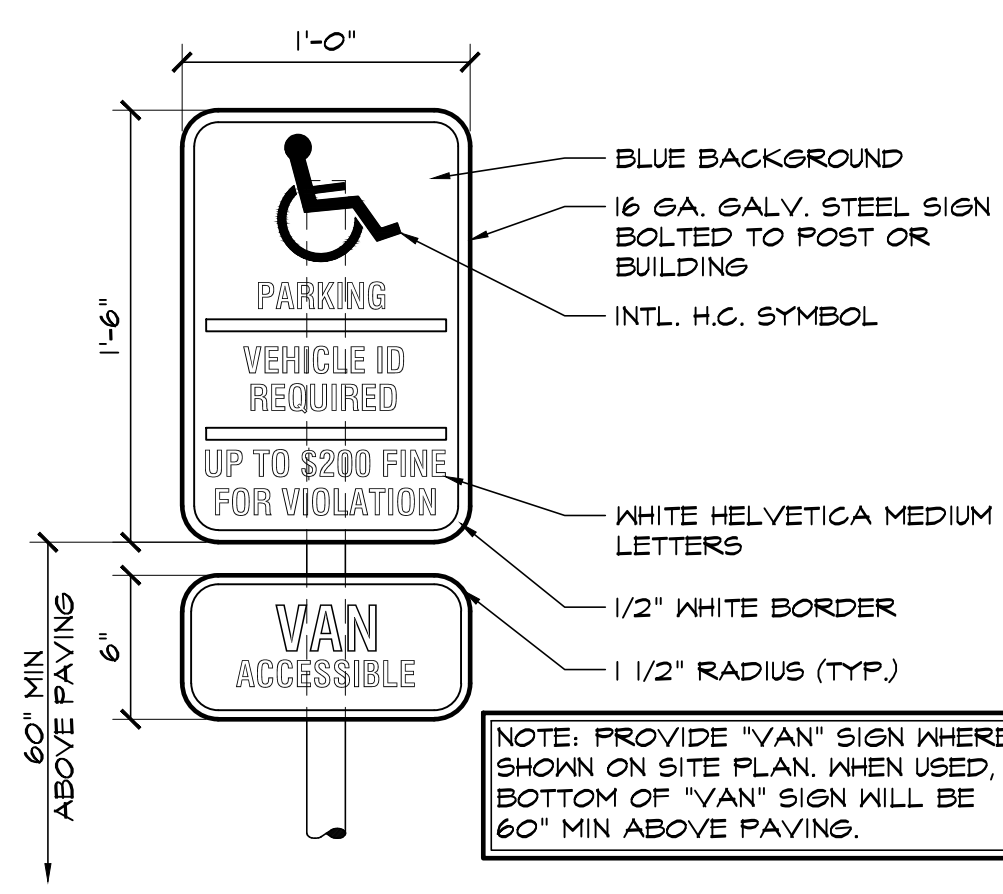
6 CMU TRASH ENCLOSURE DTL
SCALE: 3/8"=1'-0"



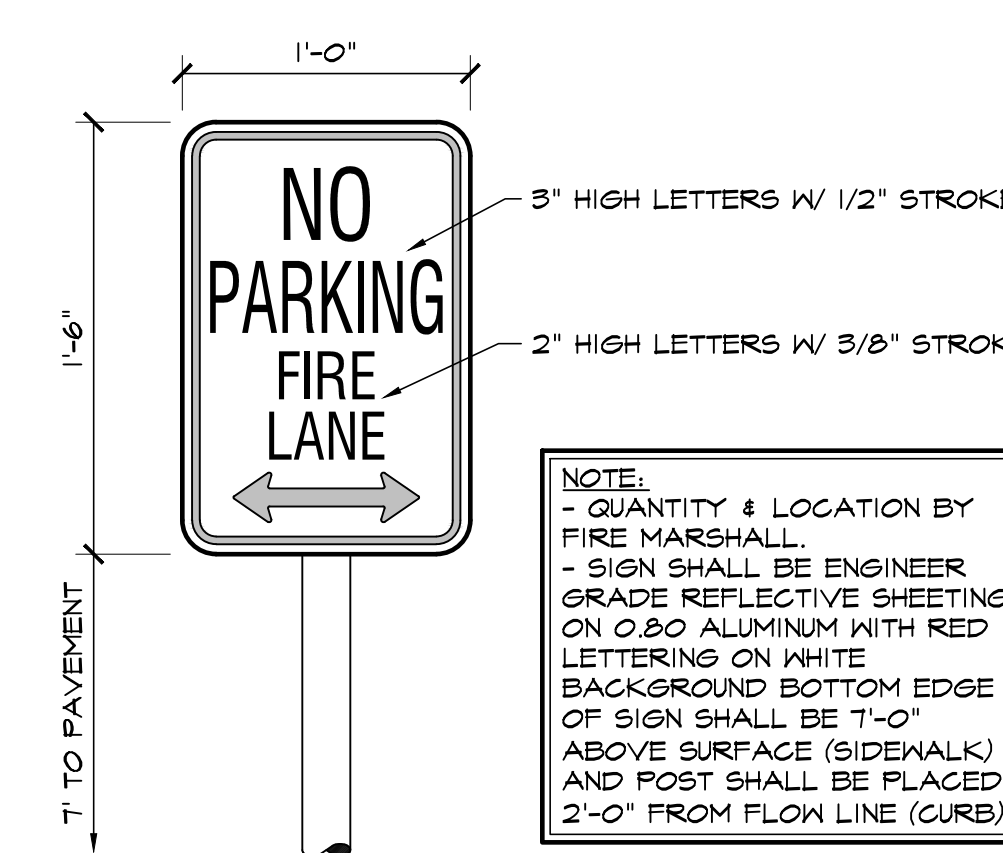
1 EPC TYPE B CURB
SCALE: 1"=1'-0"



2 ADA / STANDARD PARKING
SCALE: 1/8"=1'-0"



3 HANDICAPPED PARKING SIGN
SCALE: 1/2"=1'-0"



4 FIRE LANE SIGN
SCALE: 1/2"=1'-0"

COUNTY FILE NO: PPR-2234

HAMMERS
CONSTRUCTION INC.
COMMERCIAL GENERAL CONTRACTORS SPECIALIZING IN DESIGN/BUILD
PRESIDENT: STEVE R. HAMMERS
VICE PRES: DAVID J. HAMMERS
1411 WOOLSEY HEIGHTS
COLORADO SPRINGS, CO 80915
(719) 570-1599 FAX (719) 570-7008
www.hammersconstruction.com

THIS DRAWING CONTAINS MATERIAL & INFORMATION WHICH MAY NOT BE REPRODUCED WITHOUT WRITTEN CONSENT OF HAMMERS CONSTRUCTION, INC. THESE DRAWINGS ARE INTENDED TO BE USED ONLY BY HAMMERS CONSTRUCTION & ITS REPRESENTATIVES. THESE DRAWINGS HAVE NOT BEEN PREPARED FOR ANY OTHER PURPOSE THAN TO INDICATE THE GENERAL FEATURES AND PLACEMENT OF THE PROPOSED PROJECT. COPYRIGHT © 2023 HAMMERS CONSTRUCTION

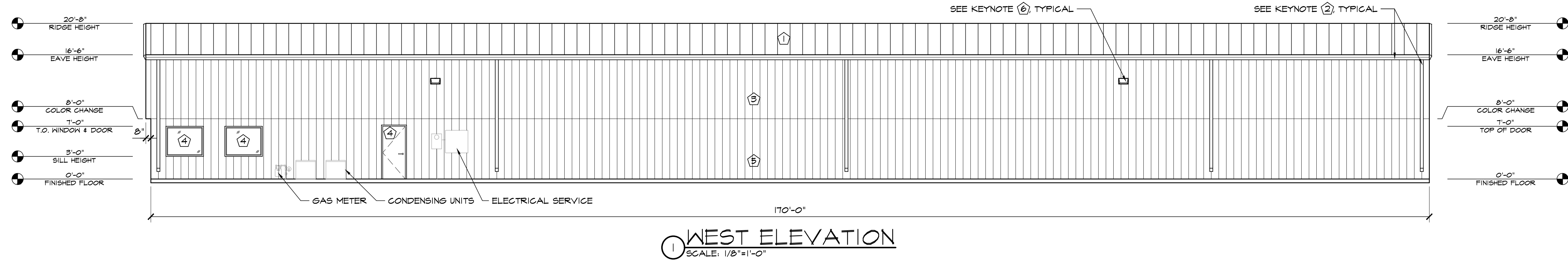
WIRENUT
HOME SERVICES
6365 E PLATTE AVE.
COLORADO SPRINGS, CO 80915
EL PASO, COLORADO

DATE: JUN. 13, 2022
DRAWN BY: J.CANTERBERRY
PROJ. MGR: J. BUTLER
SCALE: SEE PLAN
APPROVED BY:
JOB NO: 1280

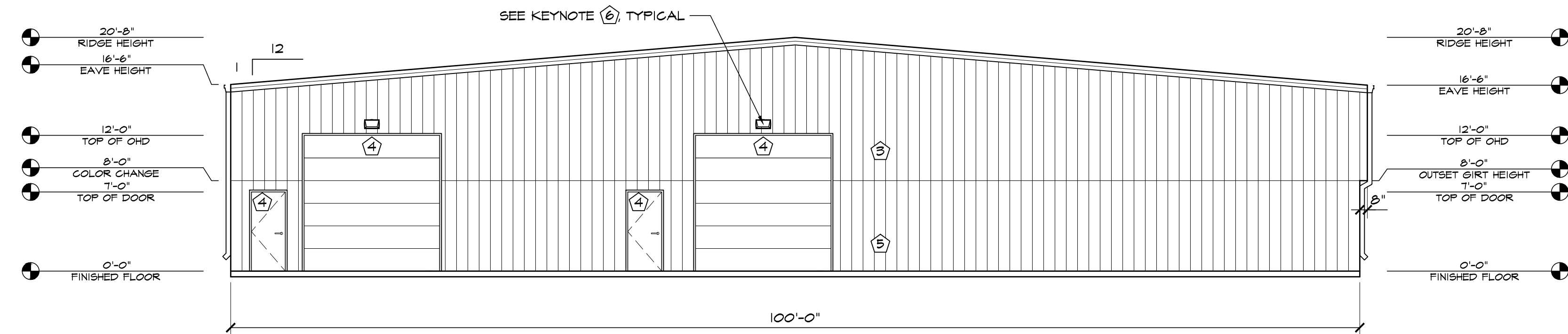
RESUBMITTALS:
A 9-23-22/DP COMMENTS 1-15-22
B 6-23-23/ COMMENTS 10-23-22
C
D
E
F

DATE: JUN. 13, 2022
DRAWN BY: J.CANTERBERRY
PROJ. MGR: J. BUTLER
SCALE: SEE PLAN
APPROVED BY:
JOB NO: 1280

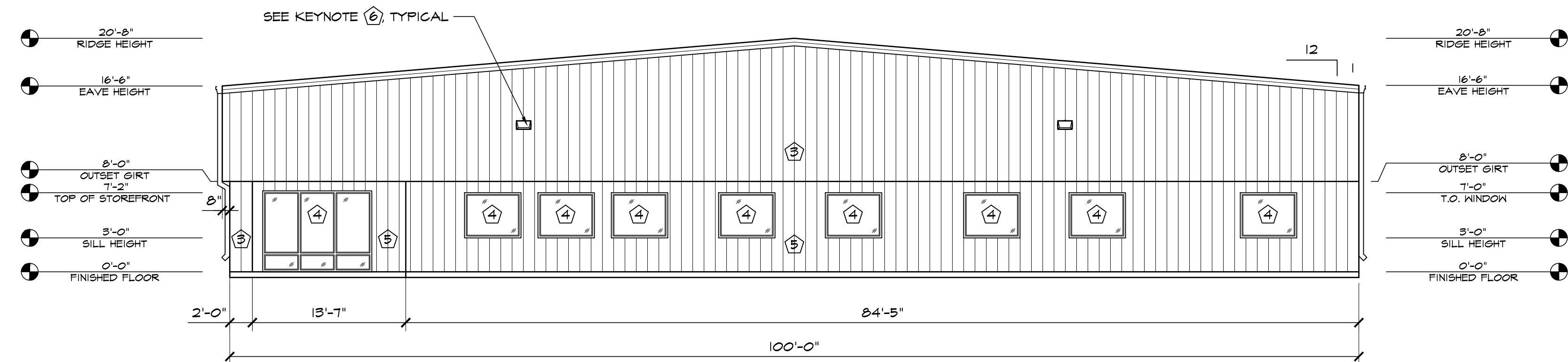
RESUBMITTALS:
A 9-23-22/DP COMMENTS 1-15-22
B 6-23-23/ COMMENTS 10-23-22
C
D
E
F



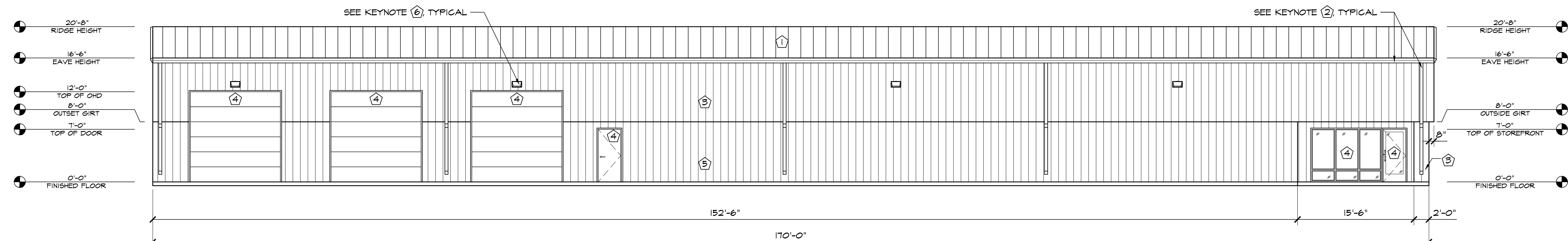
1 WEST ELEVATION
SCALE: 1/8"=1'-0"



2 SOUTH ELEVATION
SCALE: 1/8"=1'-0"



3 NORTH ELEVATION
SCALE: 1/8"=1'-0"



4 EAST ELEVATION
SCALE: 1/8"=1'-0"

ELEVATION KEY NOTES	
1	PREFINISHED 24 GA. "PBR" PANELS BY METAL BUILDING PROVIDER, COBALT BLUE
2	PREFINISHED GUTTER & DOWNSPOUTS BY METAL BUILDING PROVIDER
3	PREFINISHED 26 GA. "PBR" METAL WALL PANELS BY METAL BUILDING PROVIDER, COBALT BLUE
4	SEE SCHEDULES ON "A" SHEETS FOR ALL DOOR INFORMATION
5	PREFINISHED 26 GA. "PBR" METAL WALL PANELS BY METAL BUILDING PROVIDER, SNOW WHITE
6	WALL PACK LIGHT TOP OF LIGHT @ 13'-6" A.F.F. UNLESS OTHERWISE NOTED

COUNTY FILE NO: PPR-2234

HAMMERS
CONSTRUCTION INC.
COMMERCIAL GENERAL CONTRACTORS SPECIALIZING IN DESIGN-BUILD
PRESIDENT: STEVE R. HAMMERS
VICE PRES: DAVID J. HAMMERS
1411 WOOLSEY HEIGHTS
COLORADO SPRINGS, CO 80915
(719) 570-1599 FAX (719) 570-7008
www.hammersconstruction.com

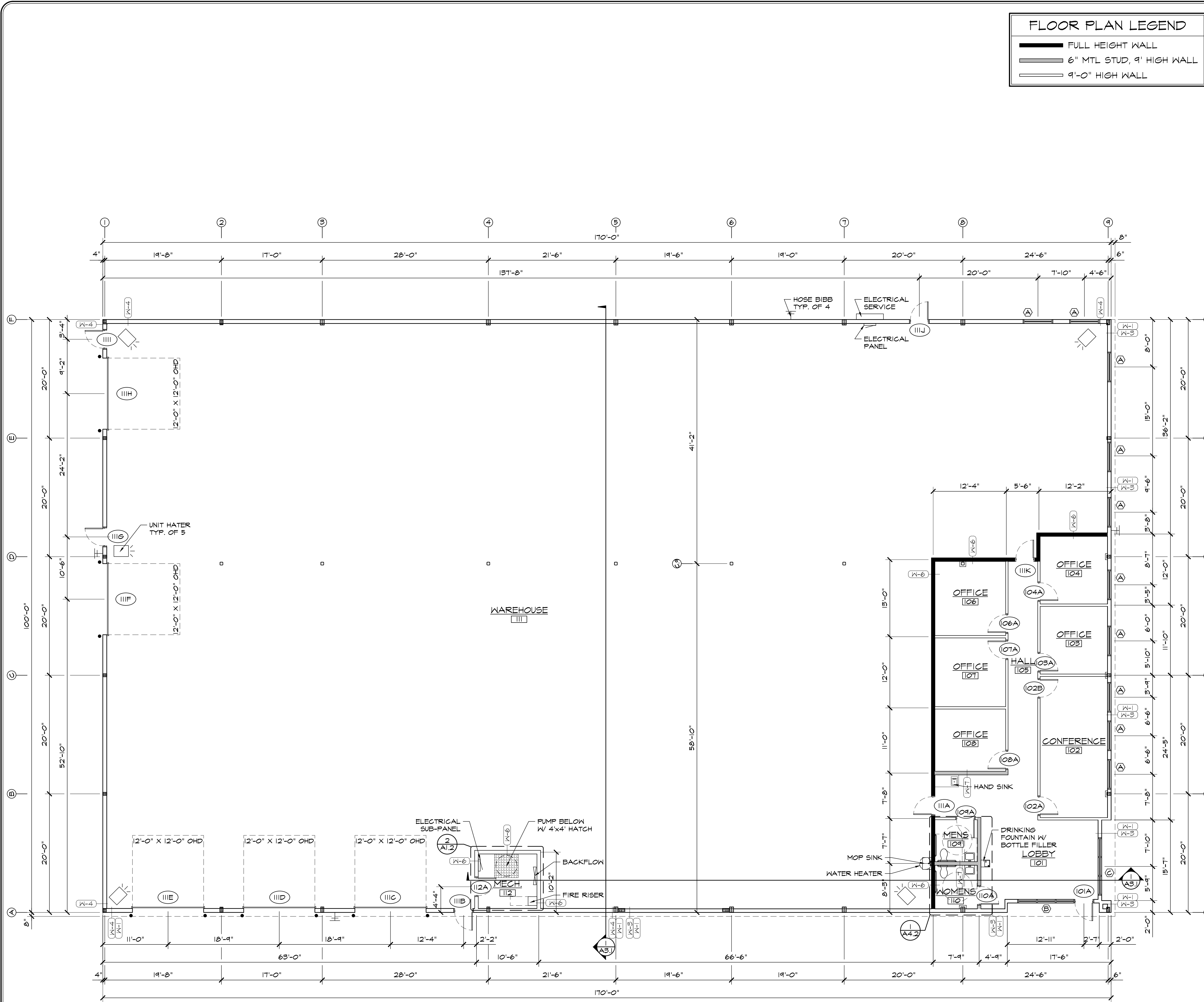
THIS DRAWING CONTAINS MATERIAL & INFORMATION WHICH MAY NOT BE REPRODUCED WITHOUT WRITTEN CONSENT OF HAMMERS CONSTRUCTION, INC. THESE DRAWINGS ARE INTENDED TO BE USED ONLY BY HAMMERS CONSTRUCTION & ITS REPRESENTATIVES. THESE DRAWINGS HAVE NOT BEEN PREPARED FOR ANY OTHER PURPOSE THAN TO INDICATE THE GENERAL FEATURES AND PLACEMENT OF THE PROPOSED PROJECT. COPYRIGHT © 2023 HAMMERS CONSTRUCTION

WIRENUT
HOME SERVICES
6365 E PLATTE AVE.
COLORADO SPRINGS, CO 80915
EL PASO, COLORADO

DATE: JUN. 13, 2022
DRAWN BY: J.CANTERBERRY
PROJ. MGR: J. BUTLER
SCALE: SEE PLAN
APPROVED BY:
JOB NO: 1280

RESUBMITTALS:
4-23-22/DP COMMENTS 1-15-22
6-23-23/COMMENTS 10-23-22

40 of 40
DP BUILDING ELEVATIONS



FLOOR PLAN LEGEND

- FULL HEIGHT WALL
- 6" MTL STUD, 9' HIGH WALL
- 9'-0" HIGH WALL

WALL TYPE DETAILS

W-1
1 1/2" = 1'-0"

8" GIRT (BY MTL BLDG PROVIDER) & R-30 PROLINER
1 1/4" EXT. WALL PANEL BY MTL BLDG PROVIDER

NOTE: THIS DETAIL APPLIES AT 8'-0" AFF

W-2
1 1/2" = 1'-0"

1 1/4" EXT. WALL PANEL BY METAL BUILDING PROVIDER
6" 18 GA. M.S. @ 16" O.C. W/ R-21 BATT. INSULATION
5/8" GWB

W-3
1 1/2" = 1'-0"

1 1/4" EXT. WALL PANEL BY METAL BUILDING PROVIDER
R-5 RIGID FOAM BOARD INSULATION
6" 18 GA. M.S. @ 16" O.C. W/ R-21 BATT. INSULATION
5/8" GWB

W-4
1 1/2" = 1'-0"

8" GIRT (BY MTL BLDG PROVIDER) W/ R-30 PROLINER
METAL LINER PANEL UP TO 8'-0" A.F.F., PROVIDE BACKING TO ATTACH
1 1/4" EXT. WALL PANEL BY MTL BLDG PROVIDER

W-5
1 1/2" = 1'-0"

5/8" GWB
6" 18 GA. M.S. @ 16" O.C. W/ R-11 BATT. INSULATION

NOTE: ALL INTERIOR WALLS ARE THIS WALL TYPE UNLESS NOTED OTHERWISE

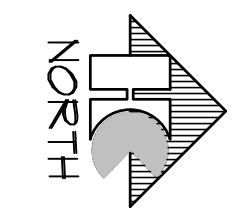
W-6
1 1/2" = 1'-0"

5/8" GWB
6" 20 GA. M.S. @ 16" O.C. W/ R-11 BATT. INSULATION

W-7
1 1/2" = 1'-0"

5/8" GWB
6" 20 GA. M.S. @ 16" O.C. W/ R-11 BATT. INSULATION

1 FLOOR PLAN
SCALE: 1/8"=1'-0"



FOR DP SUBMITTAL ONLY
COUNTY FILE NO: PPR-2234

HAMMERS CONSTRUCTION INC.
COMMERCIAL GENERAL CONTRACTORS SPECIALIZING IN DESIGN/BUILD

PRESIDENT: STEVE R. HAMMERS
VICE PRES: DAVID J. HAMMERS
1411 WOOLSEY HEIGHTS
COLORADO SPRINGS, CO 80915
(719) 570-1599 FAX (719) 570-7008
www.hammersconstruction.com

THIS DRAWING CONTAINS MATERIAL & INFORMATION WHICH MAY NOT BE REPRODUCED WITHOUT WRITTEN CONSENT OF HAMMERS CONSTRUCTION, INC. THESE DRAWINGS ARE INTENDED TO BE USED ONLY BY HAMMERS CONSTRUCTION & ITS REPRESENTATIVES. THESE DRAWINGS HAVE NOT BEEN PREPARED FOR ANY OTHER PURPOSE THAN TO INDICATE THE GENERAL FEATURES AND PLACEMENT OF THE PROPOSED PROJECT. COPYRIGHT © 2023 HAMMERS CONSTRUCTION

WIRENUT HOME SERVICES
6365 E PLATTE AVE.
COLORADO SPRINGS, CO 80915
EL PASO, COLORADO

DATE: JUN. 7, 2022
DRAWN BY: J. CANTERBERRY
PROJ. MGR: J. BUTLER
SCALE: SEE PLAN
APPROVED BY:
JOB NO: 1280

REVISIONS:

1	9-23-22/ COMMENTS 7-15-22
2	6-23-23/ COMMENTS 10-23-22

A1.1
FLOOR PLAN

LAYOUT NOTES

CONTRACTOR IS RESPONSIBLE FOR INSTALLING ALL LANDSCAPE SHOWN ON THIS PLAN. ANY DEVIATIONS FROM THIS PLAN ARE TO BE APPROVED BY OWNER'S REPRESENTATIVE OR LANDSCAPE ARCHITECT. DEVIATIONS FROM THE APPROVED PLAN WILL REQUIRE APPROVAL BY EL PASO COUNTY AND OWNER REPRESENTATIVE.

IRRIGATION SYSTEM DESCRIPTION

SITE IRRIGATION SYSTEM PROVIDED BY A FULLY AUTOMATED SPRINKLER SYSTEM CONSISTING OF DRIP IN PLANTING BEDS. ALL ZONES TO BE OPERATED FROM A SINGLE CONTROLLER LOCATED PER PLAN. COORDINATE INSTALLATION OF ALL IRRIGATION COMPONENTS WITH OWNERS REPRESENTATIVE AND OTHER TRADES. BALL VALVES SHALL BE PROVIDED BEFORE EACH ZONE VALVE FOR SYSTEM MAINTENANCE. POTABLE WATER SHALL BE USED FOR ALL SITE IRRIGATION. ANY DEVIATION FROM THIS PLAN SHALL BE APPROVED BY LANDSCAPE ARCHITECT OR OWNER.

IRRIGATION FOR GRASS SEED AREAS IS NOT REQUIRED BY EL PASO COUNTY AND IS OPTIONAL. CONTRACTOR TO COORDINATE WITH THE OWNER.

CODE REQUIREMENTS









LANDSCAPE SETBACKS (LS)				
STREET NAME OR ZONE BOUNDARY (ELEV.)	STREET CLASSIFICATION	WIDTH (FT.) REQ./PROV.	LINEAR FOOTAGE	TREE FEET REQUIRED
NOT REQUIRED				

MOTOR VEHICLE LOTS (MV)				
NO. OF VEHICLE SPACES PROVIDED	SHADE TREES (1/8 SPACES)	VEHICLE LOT FRONTAGE(S)	FRONTAGE (FT)	2/3 LENGTH OF FRONTAGE (FT)
64	4/4	INDUSTRY	156 LF	105 LF
MIN. 3' HT. SCREENING PLANTS REQ./PROV.	EVERGREEN PLANTS REQ. 50%/PROV.			
21/21	11/4			

INTERNAL LANDSCAPING (IL)				
INTERNAL LANDSCAPE AREA INCLUDES ALL LANDSCAPE AREAS NOT INCLUDING SETBACKS, BUFFERS OR MOTOR VEHICLE ISLANDS.				
NET SITE AREA (SF) (LESS PUBLIC ROW)	PERCENT MINIMUM INTERNAL AREA (5%)	INTERNAL AREA (SF) REQ./PROV.	INTERNAL TREES (1500 SF) (EXCLUDING DRIVEWAYS)	
123,304 SF	NON-RESIDENTIAL 5%	6,165 SF / 6,500 SF	13/8	
SHRUB SUBSTITUTES (50% REQ./PROV.)	INTERNAL PLANT ABBR. DENOTED ON PLAN	PERCENT GROUND PLANE VEG. REQ./PROV.		
50/50	IL	50%/50%		

LANDSCAPE BUFFERS AND SCREENS (LS)				
STREET NAME OR PROPERTY LINE (ELEV.)	LINEAR FOOTAGE: ---	SETBACK BUFFER REQ. / PROV.-FENCE	BUFFER TREES (1/20' REQ./PROV. - NA)	EVERGREEN TREES (1/3 REQ./PROV. - NA)
N/A				

PLANT SCHEDULE

Symbol	Abbr.	Quantity	Botanical Name	Common Name	Colo. spgs Key from App. B	Mature Size w x h	Planting Size
EVERGREEN TREES:							
	PE	6	Pinus edulis	Pinyon Pine	1256D	15'x15'	B & B 6' ht.
DECIDUOUS TREES:							
	GTSM	4	Gleditsia triacanthos 'Shademaster'	Shademaster Honeylocust	AD	30'x25'	B & B 2-1/2' cal.
	MS	2	Malus 'Spring Snow'	Spring Snow Crabapple	467S	15'x15'	2-1/2' cal. Container
EVERGREEN SHRUBS:							
	JL	32	Juniperus sabina	Buffalo Juniper	568A	6-8' x 12-18"	5 gal.
DECIDUOUS SHRUBS AND ORNAMENTAL GRASSES:							
	CA	3	Calamagrostis acutiflora 'Karl Foerster'	Feather Reed Grass	A	1-3' x 2-3'	1 gal.
	SJ	14	Spiraea japonica 'Majic Carpet'	Majic Carpet, Spirea	SA	1-2' / 1-2'	# 5
	POS	4	Viburnum trilobum 'Spring Green'	Spring Green Compact Viburnum	A	3-4' x 5-6'	# 5
	PB	33	Prunus besseyi	Western Sand Cherry	1345A	5-8' x 5-6'	# 5

NOTE: QUANTITIES SHOWN IN LEGEND ARE FOR CONVENIENCE ONLY. CONTRACTOR IS RESPONSIBLE FOR INSTALLING ALL MATERIALS PER PLAN.

GROUND COVER LEGEND

SYMBOL	DESCRIPTION	APPROX. SF
	Denver Granite Decorative Rock: 3/4" Diameter (with weed barrier)	9,190 SF
	Native Seed Mix "A": Refer to notes	34,556 SF

NOTE: QUANTITIES SHOWN IN LEGEND ARE FOR CONVENIENCE ONLY. CONTRACTOR IS RESPONSIBLE FOR INSTALLING ALL MATERIALS PER PLAN.

GRADE NOTE

GRADE SHALL BE ESTABLISHED BASED ON GRADING PLAN BY OTHERS, AND FOR LANDSCAPE MATERIALS PER PLAN. FINAL SOIL GRADE FOR 5-12" DIAMETER ROCK AREAS SHALL BE 4" BELOW TOP OF SIDEWALK/CURB/PAVING. AT ALL OTHER ROCK AREAS GRADE SHALL BE 3" BELOW SIDEWALK/CURB. AT SOD/SEED AREAS GRADE SHALL BE 1" BELOW TOP OF SIDEWALK/CURB.

LONG-TERM MAINTENANCE NOTE

ON-GOING MAINTENANCE DURING CONSTRUCTION:

THE CONTRACTOR SHALL BE RESPONSIBLE FOR PROVIDING ON-GOING MAINTENANCE OF ALL COMPLETED LANDSCAPE AND IRRIGATION WORK AS DEFINED UNDER CONTRACT WITH OWNER.

GREEN MAINTENANCE IMMEDIATELY AFTER PLANTING AND CONTINUE UNTIL LANDSCAPE WORK IS COMPLETED. ACCEPTED BY OWNER, AND IF REQUESTED A FORMAL MAINTENANCE PERIOD IS INITIATED. MAINTAIN LAWNS BY WATERING, FERTILIZING, WEEDING, MOWING, TRIMMING AND OTHER OPERATIONS SUCH AS ROLLING, REGARDING, REPLANTING AS REQUIRED THROUGH CONSTRUCTION PERIOD. REMULCH WITH NEW MULCH IN AREAS WHERE MULCH HAS BEEN DISTURBED BY CONSTRUCTION OPERATIONS SUFFICIENTLY TO NULLIFY ITS PURPOSE. CONTRACTOR SHALL REPAIR SEED AREAS DAMAGED BY TRAFFIC AND/OR VANDALISM DURING THE CONSTRUCTION PERIOD.

IF THE IRRIGATION SYSTEM IS NOT AVAILABLE FOR PROPER WATERING AT THE TIME OF INSTALLATION, PROVIDE AND MAINTAIN TEMPORARY PIPING, HOSES, AND LAWN WATERING EQUIPMENT AS REQUIRED TO CONVEY WATER FROM SOURCES AND TO KEEP THE LAWN AREAS UNIFORMLY MOIST AS REQUIRED FOR PROPER GROWTH. FAILURE OF THE IRRIGATION SYSTEM SHALL NOT RELIEVE THE INSTALLER OF THE RESPONSIBILITY TO PROVIDE THE REQUIRED WATER. COORDINATE WITH OWNER.

ONE-YEAR WARRANTY

AS AGREED WITH OWNER CONTRACTOR SHALL PROVIDE ONE-YEAR WARRANTY ON ALL PLANT MATERIAL, GRASSES AND IRRIGATION SYSTEM. REPLACEMENT OF DEAD, DISEASED OR SUBSTANTIALLY DAMAGED PLANT MATERIALS SHALL BE OF THE SAME OR SIMILAR TYPE AS SET FORTH IN THE LANDSCAPE PLAN. REPLACEMENT SHALL BE MADE IN A TIME PERIOD NOT EXCEEDING 15 DAYS. PLANT MATERIAL NEEDING REPLACEMENT DURING WINTER MONTHS SHALL BE REPLACED AT THE START OF THE NEXT GROWING SEASON.

THE OWNER OF THIS PROPERTY AND ANY FUTURE OWNERS SHALL BE RESPONSIBLE FOR THE PROPER LANDSCAPE AND IRRIGATION SYSTEM MAINTENANCE OF THIS SITE AND ANY RIGHT-OF-WAY AREAS BETWEEN THE CURB AND PROPERTY BOUNDARIES OF THIS SITE. MAINTENANCE OF THIS INCLUDES, BUT IS NOT LIMITED TO, IRRIGATION INSPECTIONS AND ADJUSTMENTS, IRRIGATION SYSTEM SHUT DOWN AND START UP, IRRIGATION LEAK REPAIR, LANDSCAPE WEEDING, MOWING, SEEDING, FERTILIZING, WOOD MULCH AND ROCK ADDITIONS, PRUNING AND PLANT MATERIAL REPLACEMENTS. ALL MAINTENANCE SHALL BE DONE IN ACCORDANCE WITH THE ALCC SPECIFICATIONS HANDBOOK REV EDITION 2007. OWNER SHOULD CONTACT LANDSCAPE CONTRACTOR OR LANDSCAPE ARCHITECT REGARDING ANY QUESTIONS RELATING TO THE LANDSCAPE OR IRRIGATION SYSTEM.

DOCUMENT NOTE

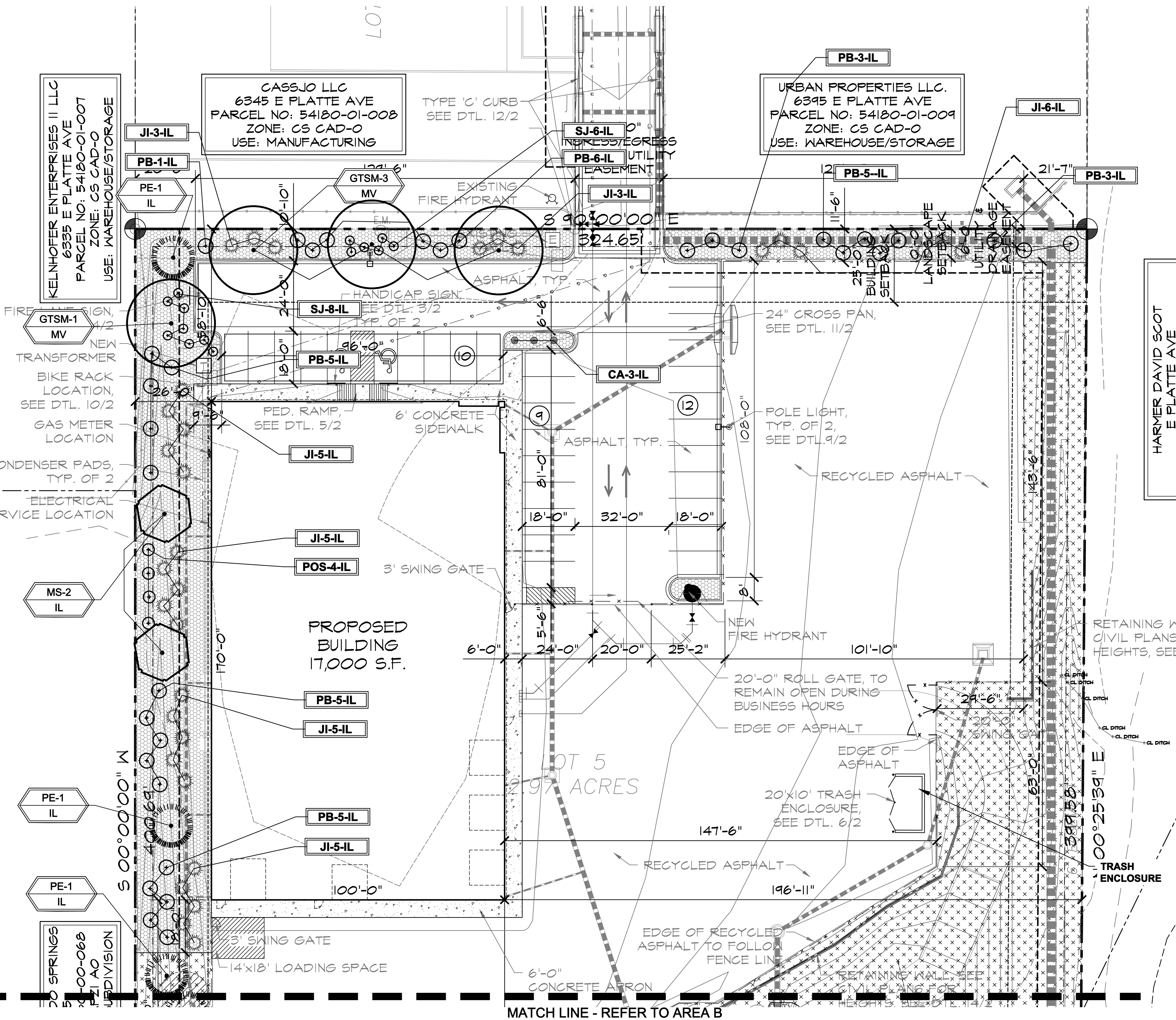
IRRESPECTIVE OF ANY OTHER TERM IN THIS DOCUMENT, LANDSCAPE ARCHITECT SHALL NOT CONTROL, OR BE RESPONSIBLE FOR CONSTRUCTION MEANS, METHODS, TECHNIQUES, SCHEDULES, SEQUENCES OR PROCEDURES, OR FOR CONSTRUCTION SAFETY OR ANY OTHER RELATED PROGRAMS, OR FOR ANOTHER PARTIES' ERRORS OR OMISSIONS OR FOR ANOTHER PARTIES' FAILURE TO COMPLETE THEIR WORK OR SERVICES IN ACCORDANCE WITH LANDSCAPE ARCHITECTS DOCUMENTS.

UTILITIES NOTE

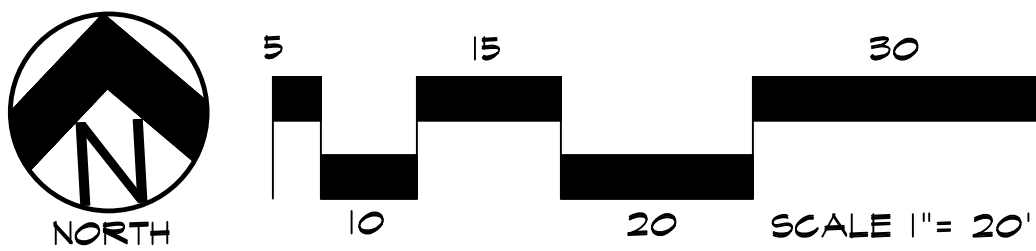
VERIFY LOCATION AND DEPTH OF ALL UNDERGROUND UTILITIES PRIOR TO START OF WORK. CALL 811 FOR UTILITY LOCATES. TREE TRUNK PLACEMENT SHALL BE 6" MINIMUM DISTANCE FROM ANY GAS OR ELECTRIC AND 10' FROM GAS MAINS RATED AT 40" DEPTH. FOR SANITARY SEWER AND WATER MAINLINES TREES SHALL NOT BE LOCATED WITHIN EASEMENTS AND WITHIN 15' OF ANY MAINLINE. ANY CONFLICT BETWEEN TREE LOCATIONS AND UTILITIES SHOWN ON PLANS SHALL BE RESOLVED WITH GENERAL CONTRACTOR PRIOR TO PLANTING. ALL ELECTRICAL VAULTS AND TRANSFORMERS SHALL BE KEPT CLEAR FROM PLANT MATERIAL PER COLORADO SPRINGS UTILITIES GUIDELINES' LANDSCAPING AROUND ELECTRICAL EQUIPMENT. SEE COLORADO SPRINGS UTILITIES CONSTRUCTION STANDARD DRAWINGS 16-302 FOR SPECIFIC CLEARANCE REQUIREMENTS. ALL SHRUBS TO BE LOCATED 3' CLEAR OF ALL FIRE HYDRANTS AT MATURE SIZE.



Know what's below.
Call before you dig.



LANDSCAPE PLAN - AREA 'A'



HIGHER GROUND DESIGNS, INC.

LANDSCAPE ARCHITECTURE, PLANNING & IRRIGATION DESIGN

5350 NORTH ACADEMY BLVD., STE. 207
COLORADO SPRINGS, CO 80916
Phone 719-477-1646
Fax 719-486-1122



THESE DRAWINGS ARE THE PROPERTY OF HIGHER GROUND DESIGNS, INC. AND SHALL NOT BE USED FOR ANY OTHER PROJECT WITHOUT THE AUTHORIZATION BY HIGHER GROUND DESIGNS, INC. THESE DRAWINGS ARE FOR APPROVAL ONLY.

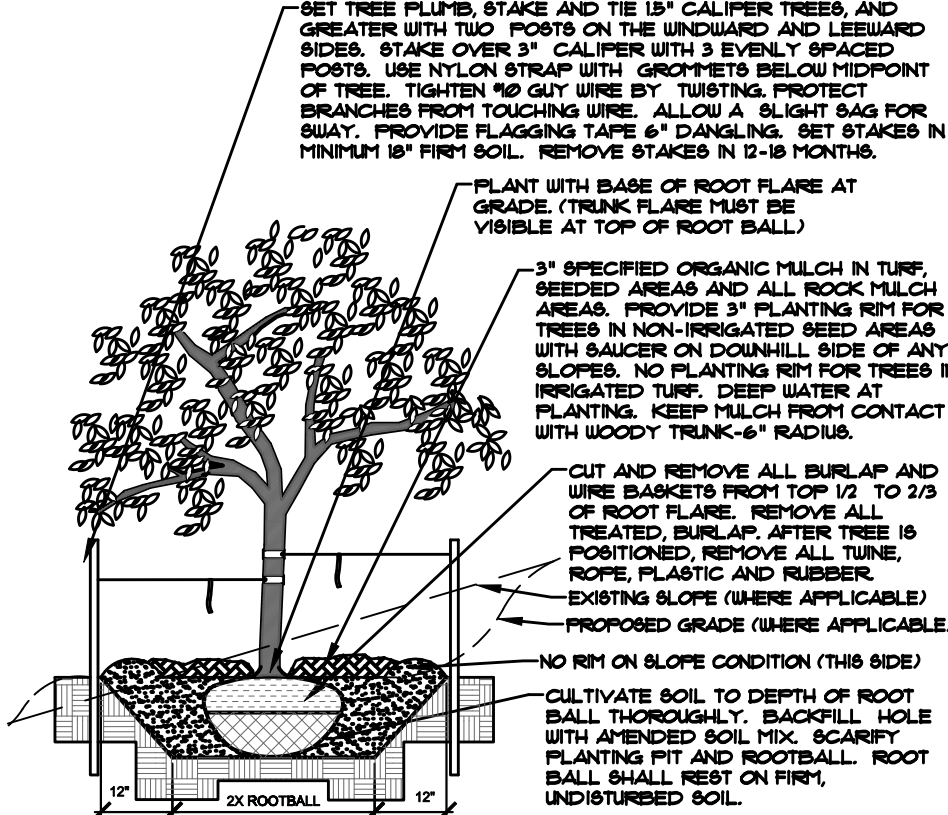
WIRENUT
HOME SERVICES
6365 EAST PLATTE AVE.
EL PASO COUNTY, CO

PREPARED FOR:
HAMMERS CONSTRUCTION

For Approval Only

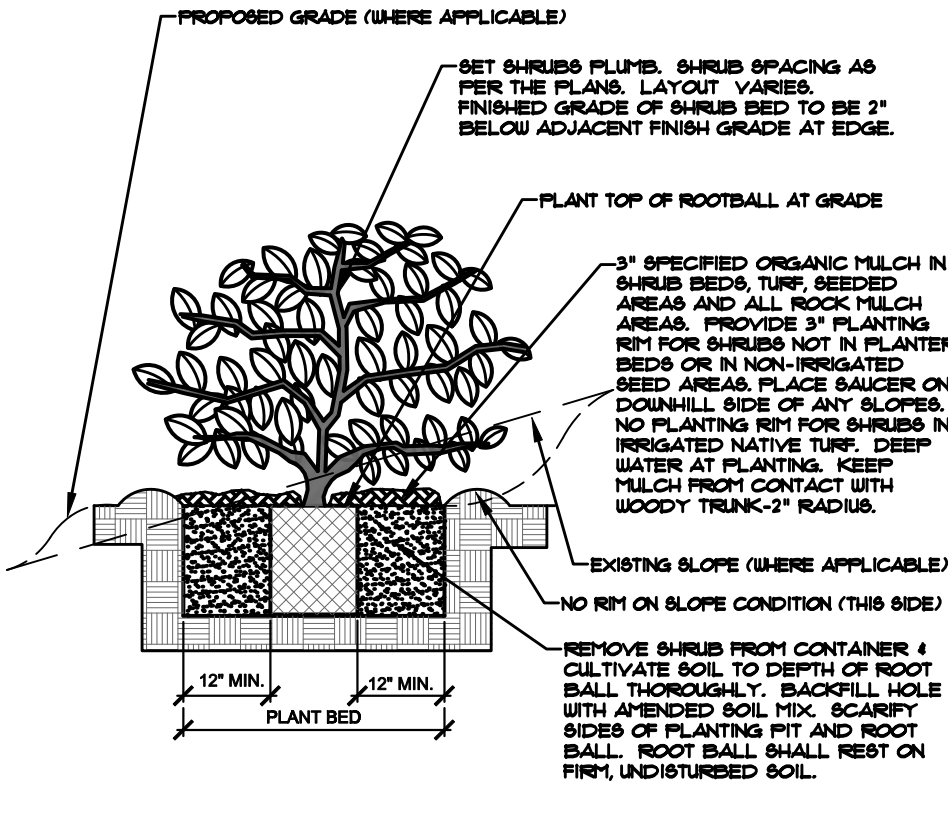
NOT FOR CONSTRUCTION	JOB NUMBER	1082-22
	REVISIONS	
	6-15-22	PER UPDATES
	6-24-22	PER IRRIGATION PLAN
	9-21-22	PER COMMENTS
	6-22-23	PER COMMENTS
ORIGINAL DATE	6-1-22	
	DRAWN BY	
	DESCRIPTION	
LANDSCAPE PLAN - AREA A		
	SHEET NO.	L1.1

- NOTES:
- MARK NORTH SIDE OF TREE AT NURSERY AND ALIGN TREE TO NORTH WHEN PLANTING.
 - DO NOT REMOVE OR CUT LEAVES.
 - PRUNE ONLY DEAD, BROKEN, CROOKING, OR LEAK BRANCHES (OR NARROW CROOKS).
 - IMMEDIATELY PRIOR TO PLANTING. DO NOT REMOVE TERMINAL BUDS THAT EXTEND TO TREE CROWN.
 - NO STRUCTURAL PRUNING OF TREE UNTIL AFTER ESTABLISHMENT PERIOD (2 GROWING SEASONS).
 - REMOVE ANY DOUBLE LEADER, UNLESS OTHERWISE DIRECTED BY OWNER'S REPRESENTATIVE.
 - KEEP PLANTS MOIST AND SHADED UNTIL PLANTING. AVOID FULL PLANTING IF POSSIBLE.
 - ATTENDED BACK FILL SHALL BE 10% SOIL FROM PLANTING PIT AND 30% ORGANIC MATERIAL.
 - WRAP TRUNK ON EXPOSED BRIS OR SPECIES WITH THIN BARK. USE ELECTRICAL TAPE, NOT TYNE.
 - WRAP OCTOBER 9 AND REMOVE BY MARCH 3.
 - DO NOT FERTILIZE TREE DURING THE FIRST GROWING SEASON.
 - COORDINATE WITH CITY FORESTRY FOR CURRENT NECTA DISEASE RECOMMENDATIONS PRIOR TO PLANTING.



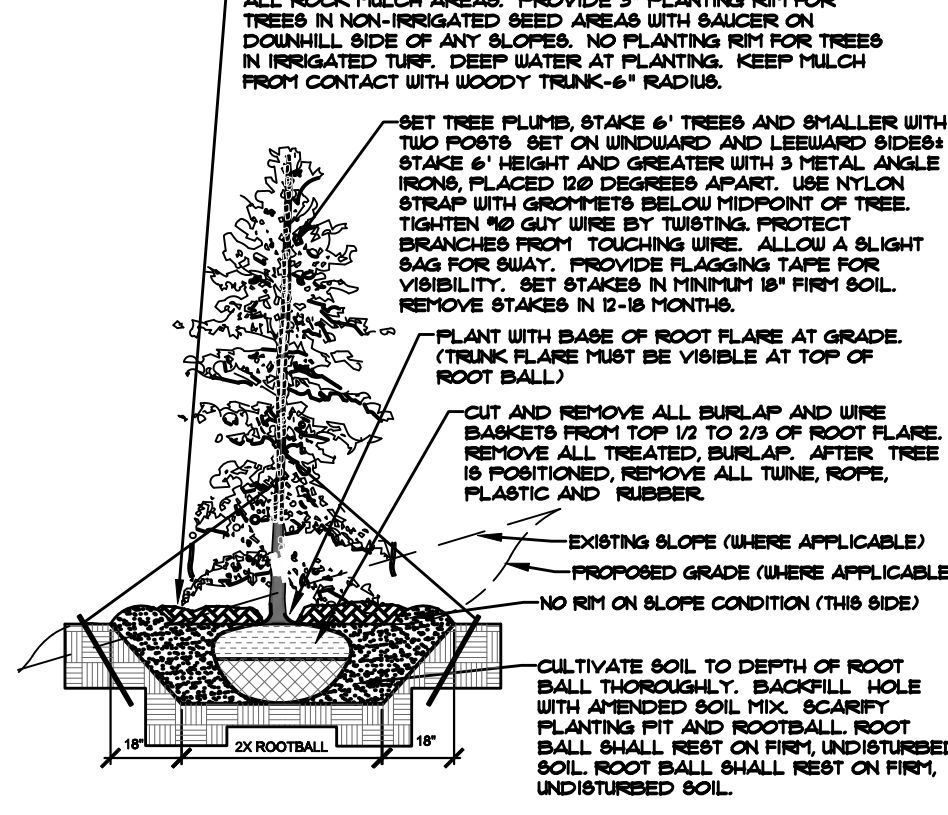
A DECIDUOUS TREE PLANTING DETAIL
NOT TO SCALE

- NOTES:
- PRUNE ONLY DEAD OR BROKEN BRANCHES IMMEDIATELY PRIOR TO PLANTING.
 - KEEP PLANTS MOIST AND SHADED UNTIL PLANTING.
 - DO NOT FERTILIZE FOR AT LEAST ONE GROWING SEASON.
 - ATTENDED BACK FILL SHALL BE 10% SOIL FROM PLANTING PIT AND 30% ORGANIC MATERIAL.
 - FOR ROOT END AT BOTTOM OF BALL SPILT ROOT BALL VERTICALLY FROM BOTTOM HALFWAY TO TOP. SPREAD THE TWO HALVES OVER A MOUND OF SOIL IN PLANTING PIT.
 - FOR POT BOUND PLANTS ONLY: MAKE 4-5 VERTICAL CUTS IN ROOT BALL 1" DEEP. PLANT IMMEDIATELY.



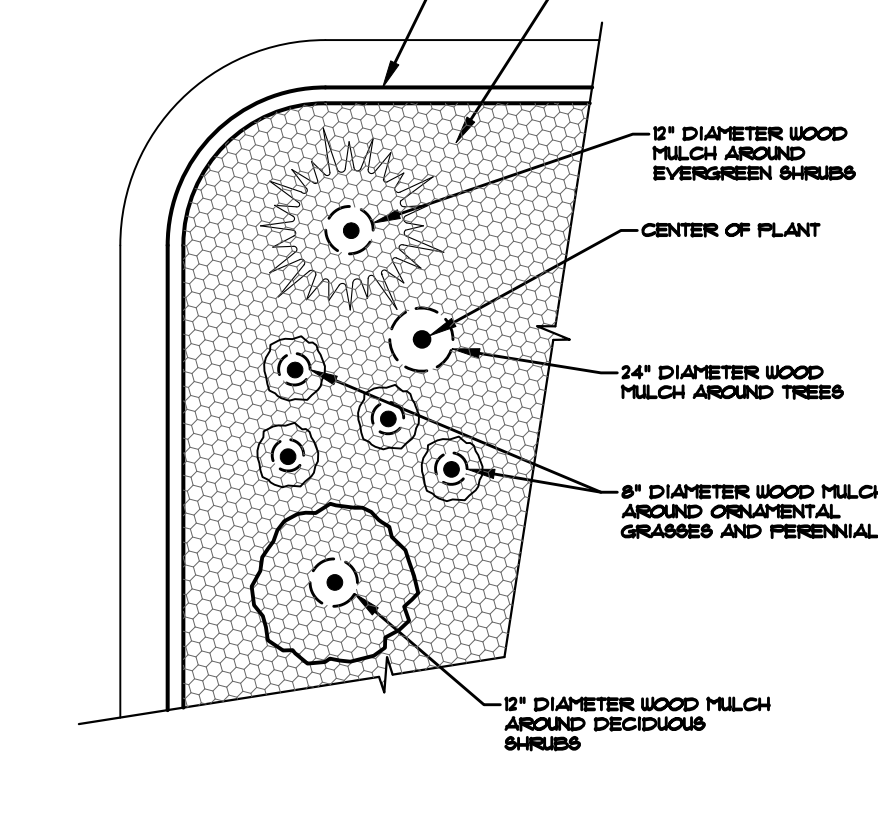
B SHRUB PLANTING DETAIL
NOT TO SCALE

- NOTES:
- MARK NORTH SIDE OF TREE AT NURSERY AND ALIGN TREE TO NORTH WHEN PLANTING.
 - DO NOT REMOVE OR CUT LEAVES.
 - PRUNE ONLY DEAD OR BROKEN BRANCHES IMMEDIATELY PRIOR TO PLANTING.
 - REMOVE ANY DOUBLE LEADER, UNLESS OTHERWISE DIRECTED BY OWNER'S REPRESENTATIVE.
 - KEEP PLANTS MOIST AND SHADED UNTIL PLANTING.
 - ATTENDED BACK FILL SHALL BE 10% SOIL FROM PLANTING PIT AND 30% ORGANIC MATERIAL.
 - PINE AND SPRUCE TREES TO BE SPRAYED FOR IPB BARK BEETLE PRIOR TO PLANTING.
 - SEE CONIFERUS TREE NOTE ON PLANTING NOTES SHEET.



C EVERGREEN TREE PLANTING DETAIL
NOT TO SCALE

- NOTES:
- CONTRACTOR TO INSTALL WOOD MULCH RINGS AROUND LANDSCAPES AS SHOWN BELOW FOR ALL TREES, SHRUBS, PERENNIALS AND ORNAMENTAL GRASSES.
 - INSTALL IN ROCK MULCHED AREAS. ROCK SHALL BE CLEAR FROM MULCH IN UNIFORM CIRCLE AND WOOD MULCH APPLIED AT 2" DEPTH. HOLD WOOD MULCH 2-3" FROM TRUNK.
 - REFER TO LANDSCAPE PLANS FOR ALL TREE, SHRUB AND ORNAMENTAL GRASS LOCATIONS.



D TYPICAL PLANT MATERIAL TREATMENT
NOT TO SCALE

INSTALLATION NOTES

REMOVE EXISTING TREES, DEBRIS AND WEEDS FROM SITE PRIOR TO CONSTRUCTION (AS SHOWN PER PLAN).

LANDSCAPE CONTRACTOR IS RESPONSIBLE FOR MAINTAINING THE SITE DURING CONSTRUCTION. WEEDS AND TRASH SHALL BE REMOVED DAILY AS REQUIRED.

EXISTING TOPSOIL TO BE STOCKPILED ON-SITE AND USED DURING CONSTRUCTION TO ESTABLISH GRADES WITHIN LANDSCAPE AREAS AS SHOWN PER PLAN.

CONTRACTOR SHALL REFER TO ASSOCIATED LANDSCAPE CONTRACTORS OF COLORADO HANDBOOK (ALCO), 2007 REVISED EDITION FOR ALL CONSTRUCTION FOR THIS SITE. CONTACT OWNER/LANDSCAPE ARCHITECT FOR QUESTIONS.

QUANTITIES SHOWN IN PLANT SCHEDULE ARE FOR CONVENIENCE ONLY. CONTRACTOR IS RESPONSIBLE FOR INSTALLING ALL PLANT MATERIAL PER PLAN.

LANDSCAPE ARCHITECT SHALL HAVE OPPORTUNITY TO INSPECT AND APPROVE ALL TREES AND ALL 1-15 GALLON MATERIAL AT JOB SITE PRIOR TO PLANTING, INCLUDING PLACEMENT INSPECTION.

STEEL EDGING TO BE GREEN PRO-STEEL (1/8" x 4" x 10') WITH STAKES OR APPROVED EQUAL. EDGING TO BE EXPOSED 1/2" MAXIMUM ABOVE FINISHED GRADES. INSTALL PER MANUFACTURE RECOMMENDATIONS. SEE PLAN FOR EDGING LOCATIONS.

ALL ROCK COVER AREAS ONLY TO BE PREPARED WITH 3 OZ PROFESSIONAL GRADE POLYSPUN WEED BARRIER WITH STAPLES AT 5" O.C. FABRIC SEAMS TO BE OVERLAPPED 6" MIN. AND SECURED WITH STAPLES.

GROUND COVER SHALL BE CONTINUOUS UNDER ALL SHRUBS THROUGHOUT PROJECT SITE. REFER TO PLANTING DETAILS.

TREES AND SHRUBS TO RECEIVE ORGANIC MULCH PER DETAILS, INCLUDING ROCK AREAS-SEE DETAILS. UNLESS OTHERWISE SPECIFIED, ORGANIC MULCH TO BE 'CASCADE CEDAR' WITH NO LANDSCAPE FABRIC 4" DEPTH.

DO NOT PLANT SHRUBS OR TREES OF INCOMPATIBLE WATER REQUIREMENTS IMMEDIATELY ADJACENT (MINIMUM 5') TO ONE ANOTHER.

PLANT BACKFILL SHALL BE 70% NATIVE ON-SITE SOIL, AND 30% BREW-GRO BIOCOMP CLASS 1 (OR CITY APPROVED EQUAL).

A REPRESENTATIVE SAMPLE OF THE BOTANICAL NAME TAGS, FURNISHED BY THE NURSERY STOCK PROVIDER, SHALL REMAIN ATTACHED TO THE PLANTS UNTIL FINAL INSPECTION.

LANDSCAPE CONTRACTOR SHALL NOTIFY LANDSCAPE ARCHITECT IF STORM DRAINAGE FROM ADJACENT LANDSCAPE AREAS OR BUILDING DOWNSPOUTS WILL ADVERSELY AFFECT LANDSCAPED AREAS PER THE PLAN.

PRIOR TO INSTALLING PLANTS OR GROUND COVER BROADCAST (PLANT SAFE) PREEN WEED PRE-EMERGENT, OR APPROVED EQUAL, IN ALL PLANTING AREAS PER MANUFACTURE RECOMMENDATIONS. WWW.PREEN.COM

FIRE SIGNAGE NOTE

ANY VEGETATION THAT MAY GROW TO OR IMMEDIATELY OBSTRUCT ANY FIRE LANE SIGNAGE WILL BE PLANTED IN SUCH A WAY TO PREVENT ANY FUTURE OBSTRUCTION OF SUCH SIGNAGE.

SEEDING NOTES

SEED MIX 'A': NATIVE SEED TO BE EL PASO COUNTY CONSERVATION DISTRICT ALL-PURPOSE SEED MIX. SOIL PREPARATION AND SEEDING METHODS SHALL FOLLOW ALL GUIDELINES PER CITY OF COLORADO SPRINGS STORMWATER ENTERPRISE CONSTRUCTION MANUAL, SECTION 5, DATED DECEMBER 2020. REFER TO TABLE 5-1 FOR SEED MIX.

DEPENDENT ON WEATHER, SEED SHALL BE INSTALLED WITHIN THE FOLLOWING TIME FRAMES: SEPTEMBER 1 UNTIL CONSISTENT GROUND FREEZE FOR SPRING ESTABLISHMENT (DORMANT SEEDING); SPRING THAW UNTIL JUNE 1 FOR SPRING AND SUMMER ESTABLISHMENT (ACTIVE SEEDING).

FOR HYDRO-SEEDING ALL SEEDED AREAS SHALL RECEIVE NOT LESS THAN 1 TON PER ACRE (2000 LBS) OF VIRGIN WOOD CELLULOSE HYDRO-MULCH AND 100 LBS PER ACRE OF ORGANIC TACKIFIER.

SEEDED LANDSCAPE AREAS SHALL HAVE NO BARE AREAS LARGER THAN SIX (6) SQUARE INCHES 15 DAYS AFTER GERMINATION.

DRILL SEEDING: SEEDING EQUIPMENT USED FOR APPLYING SEED MIXTURES SHALL BE DESIGNED, MODIFIED OR EQUIPPED TO REGULATE THE APPLICATION RATE AND PLANTING DEPTH OF THE SEED MIXTURE. SEED SHALL BE UNIFORMLY DISTRIBUTED IN THE DRILL HOPPER DURING THE DRILLING OPERATION. A RANGELAND DRILL CAPABLE OF MIXING DIFFERENT SIZES AND WEIGHTS OF SEEDS SHALL BE USED. THE DRILL SHALL BE EQUIPPED WITH DOUBLE DISK FURROW OPENERS, DEPTH BANDS, PRESS WHEELS OR DRAG CHAINS.

THE SEED SHALL BE DRILLED APPROXIMATELY 1/2" INCH BELOW THE SOIL SURFACE. HALF OF THE TOTAL RATE OF SEED APPLICATION SHALL BE DRILLED IN 1 DIRECTION, WITH THE REMAINDER OF THE SEED RATE DRILLED AT 90 DEGREES FROM THE FIRST DIRECTION. DO NOT DRILL OR SOW SEED DURING HIGH WINDS OR WHEN THE GROUND IS FROZEN OR OTHERWISE UNABLE TO BE WORKED.

ALL SEEDED AREAS LESS THAN 3:1 SHALL RECEIVE NO LESS THAN 2 TONS PER ACRE (400 LBS) OF CERTIFIED WEED FREE STRAW MULCH. STRAW MULCH SHALL BE APPLIED IN A UNIFORM MANNER BY MULCH SPREADER OR BY HAND. STRAW MULCH SHALL BE CRIMPED OR ANCHORED INTO THE SEEDED IMMEDIATELY FOLLOWING SPREADING BY USING A MULCH TILLER (CRIMPER). MULCH TILLERS SHALL HAVE ROUND, NOTCHED-BLADES SPACED 8-INCHES APART (MIN.) AND SHALL HAVE SUFFICIENT WEIGHT TO FORCE THE VEGETATIVE MULCH A MINIMUM DEPTH OF 3-INCHES INTO THE SOIL. ALL MULCH TILLING SHALL BE DONE PERPENDICULAR TO THE FLOW-LINE OF THE SLOPE (ALONG CONTOURS). HAND CRIMPING SHALL BE PERFORMED ON AREAS WHERE MECHANICAL METHODS CANNOT BE USED.

MULCH SHALL BE APPLIED TO SEEDED AREAS (INCLUDING DAMP GROUND) WITHIN 24 HOURS FOLLOWING THE COMPLETION OF SEEDING OPERATIONS FOR THE AREA. MULCHING SHALL NOT BE PERFORMED DURING ADVERSE WEATHER CONDITIONS OR WHEN WIND PREVENTS UNIFORM DISTRIBUTION. APPLICATION SHALL BE IN A MANNER TO NOT SERIOUSLY DISTURB THE SEEDED SURFACE.

NATIVE GRASS MANAGEMENT NOTE

ON-GOING MAINTENANCE RECOMMENDATIONS FOR NATIVE GRASS

WELL ESTABLISHED SEEDED LAWN SHALL BE A HEALTHY, WELL-ROOTED, EVEN-COLORED, AND FREE OF WEEDS, BARE AREAS, AND SURFACE IRREGULARITIES.

THE MATURE HEIGHT OF ANY SPRING GRASS IS EXPECTED TO BE MAINTAINED AT ABOUT 6" HIGH AND MOWED TO 3" ONCE ANNUALLY IN THE LATE WINTER OR EARLY SPRING, AND IRRIGATED ON REDUCED WATER SCHEDULE.

THE SUCCESS OF PERMANENT NATIVE GRASS SEEDING CAN RARELY BE EVALUATED ACCURATELY PRIOR TO THE END OF ITS SECOND FULL GROWING SEASON. SEEDING SUCCESS DEPENDS UPON CONTROL OF WEED COMPETITION DURING THE FIRST TWO GROWING SEASONS. IN ADDITION, THE SITE SHOULD BE MONITORED ANNUALLY FOR UNDESIRABLE PLANT SPECIES.

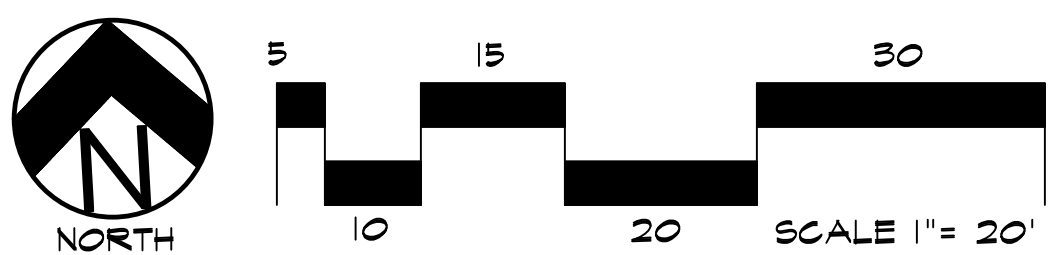
THE SITE SHOULD BE MONITORED FOR UNDESIRABLE PLANT SPECIES. IF WEED CONTROL NEEDS TO BE PERFORMED DURING THE FIRST YEAR OF PLANT GROWTH, UTILIZE ONE OF TWO METHODS. REGARDLESS OF WHICH METHOD OF WEED CONTROL IS USED, COMPLETE BEFORE FLOWERING OF WEED SEED HEADS. SINCE WEED SPECIES MAY DEVELOP MATURE SEED HEADS AT DIFFERENT TIME OF THE GROWING SEASON, WEED CONTROL EFFORTS WILL BE REQUIRED.

- HAND PULL NOXIOUS WEEDS, REMOVING AS MUCH OF THE ROOT SYSTEM AS POSSIBLE.
- USE WEED EATERS TO SELECTIVELY CUT OFF THE SEED HEADS OF NOXIOUS WEEDS. USE SELECTIVE BROADLEAF HERBICIDE SUCH AS 2-4-D WITH A BACKPACK SPRAYER OR WICK APPLICATOR. BE CAREFUL NOT TO APPLY HERBICIDE ON MORE THAN ONE SQUARE FOOT IN ANY GIVEN AREA. CONTRACTOR TO NOTIFY OWNER'S AUTHORIZED REPRESENTATIVE OF ANY SUSPECTED SOIL PROBLEMS AT THE END OF THE FIRST GROWING SEASON. BROADBAND APPLICATIONS OF HERBICIDE CAN BE COMPLETED AFTER NATIVE GRASS SPECIES REACH MATURE HEIGHT.

DOCUMENT NOTE

IRRESPECTIVE OF ANY OTHER TERM IN THIS DOCUMENT, LANDSCAPE ARCHITECT SHALL NOT CONTROL, OR BE RESPONSIBLE FOR CONSTRUCTION MEANS, METHODS, TECHNIQUES, SCHEDULES, SEQUENCES OR PROCEDURES, OR FOR CONSTRUCTION SAFETY OR ANY OTHER RELATED PROGRAMS, OR FOR ANOTHER PARTY'S FAILURE TO COMPLETE THEIR WORK OR SERVICES IN ACCORDANCE WITH LANDSCAPE ARCHITECT'S DOCUMENTS.

LANDSCAPE PLAN - AREA 'B'



SLOPE STABILIZATION

LANDSCAPE CONTRACTOR TO PROVIDE EROSION CONTROL BLANKETS OR EQUAL ON SEEDED SLOPES 3:1 AND STEEPER. BLANKETS TO BE SECURED TO SLOPE PER MANUFACTURE RECOMMENDATIONS FIELD VERIFY SLOPES.

EROSION CONTROL BLANKET SHALL CONSIST OF 100% AGRICULTURAL STRAW BLANKET WITH PHOTODEGRADABLE NETTING ON BOTH SIDES.



Know what's below.
Call before you dig.

GROUND COVER LEGEND

SYMBOL	DESCRIPTION
	Denver Granite Decorative Rock: 3/4" Diameter (with weed barrier)
	Native Seed Mix 'A': Refer to notes
	Protect Existing Landscape

UTILITIES NOTE

VERIFY LOCATION AND DEPTH OF ALL UNDERGROUND UTILITIES PRIOR TO START OF WORK. CALL 811 FOR UTILITY LOCATES. TREE TRUNK PLACEMENT SHALL BE 6" MINIMUM DISTANCE FROM ANY GAS OR ELECTRIC AND 10' FROM GAS MAINS RATED AT 150PSI. FOR SANITARY SEWER AND WATER MAINLINES TREES SHALL NOT BE LOCATED WITHIN EASEMENTS AND WITHIN 15' OF ANY MAINLINE. ANY CONFLICT BETWEEN TREE LOCATIONS AND UTILITIES SHOWN ON PLANS SHALL BE RESOLVED WITH GENERAL CONTRACTOR PRIOR TO PLANTING. ALL ELECTRICAL VAULTS AND TRANSFORMERS SHALL BE KEPT CLEAR FROM PLANT MATERIAL PER COLORADO SPRINGS UTILITIES GUIDELINES LANDSCAPING AROUND ELECTRICAL EQUIPMENT. SEE COLORADO SPRINGS UTILITIES CONSTRUCTION STANDARD DRAWINGS 18-302 FOR SPECIFIC CLEARANCE REQUIREMENTS. ALL SHRUBS TO BE LOCATED 3' CLEAR OF ALL FIRE HYDRANTS AT MATURE SIZE.

HIGHER GROUND DESIGNS, INC.
LANDSCAPE ARCHITECTURE, PLANNING & IRRIGATION DESIGN

5350 NORTH ACADEMY BLVD., STE. 207
COLORADO SPRINGS, CO 80918
Phone 719-477-1646
Fax 719-568-1122



THESE DRAWINGS ARE THE PROPERTY OF HIGHER GROUND DESIGNS, INC. AND SHALL NOT BE USED FOR ANY OTHER PROJECT WITHOUT THE AUTHORIZATION BY HIGHER GROUND DESIGNS, INC. THESE DRAWINGS ARE FOR APPROVAL ONLY.

WIRENUT
HOME SERVICES
6365 EAST PLATTE AVE.
EL PASO COUNTY, CO

PREPARED FOR:
HAMMERS CONSTRUCTION

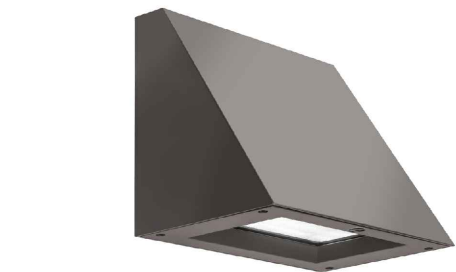
For Approval Only

NOT FOR CONSTRUCTION	1082-22	
	REVISIONS	
	6-15-22	PER UPDATES
	6-24-22	PER IRRIGATION PLAN
	9-21-22	PER COMMENTS
	6-22-23	PER COMMENTS
	ORIGINAL DATE	6-1-22
	DRAWN BY	
DESCRIPTION		
LANDSCAPE PLAN - AREA B		
SHEET NO.		
L1.2		

CALCULATION ZONE STATISTICS						
DESCRIPTION	SYMBOL (fc)	AVERAGE (fc)	MAXIMUM (fc)	MINIMUM (fc)	MAX./MIN. (fc)	AVG./MIN. (fc)
PARKING LOT	+	1.4	3.7	0.2	18.5:1	7.0:1
TO PROPERTY LINE	+	0.3	5.0	0.0	N/A	N/A

LIGHT FIXTURE SCHEDULE									
MARK	MANUF.	MODEL	LAMP		MOUNTING	DESCRIPTION	VOLTAGE	TOTAL WATTS	NOTES
			QTY.	WATT					
D1	LITHONIA	LDN6 35/15 L06AR LSS	1	17.5	LED	RECESSED	120/277	17.5	
P1	LITHONIA	DSX1 LED P2 40K TFM MVOLT	1	70.0	LED	POLE @ 20'-0"	120/277	70.0	
P2	LITHONIA	DSX1 LED P2 40K BLC MVOLT	1	70.0	LED	POLE @ 20'-0"	120/277	70.0	
WP1	LITHONIA	WDGE2 LED P3 40K 80CRI T4M	1	32.1	LED	SURFACE	120/277	32.1	
WP2	LITHONIA	WDGE2 LED P0 40K 80CRI T2M	1	6.9	LED	SURFACE	120/277	6.9	

4 LDN6 DOWNLIGHT (D1)
ES0.1 SCALE: NONE

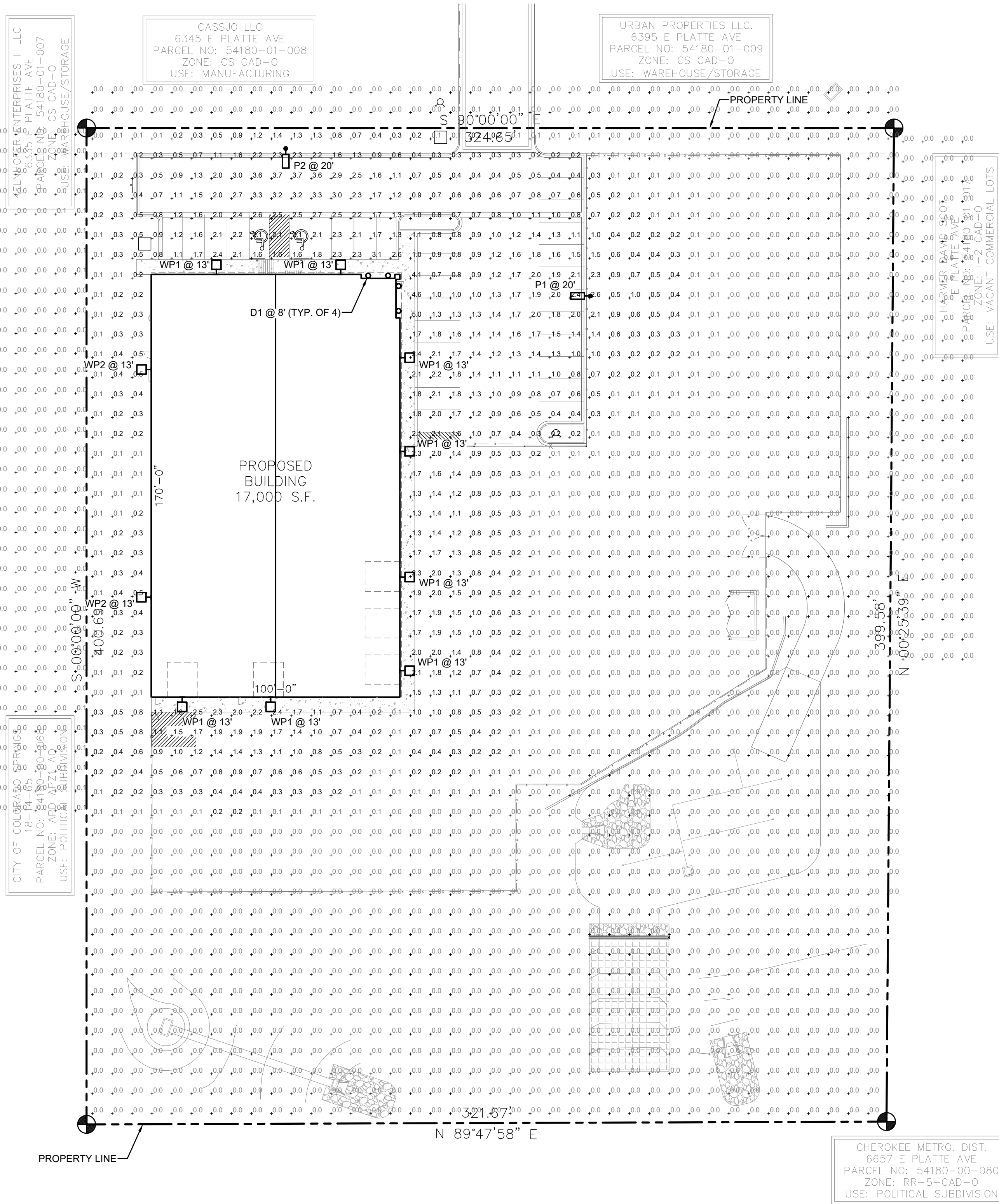


3 WDGE2 WALLPACK (WP1 - WP2)
ES0.1 SCALE: NONE



2 DSX1 AREA LUMINAIRE (P1 - P3)
ES0.1 SCALE: NONE

1 SITE PHOTOMETRIC PLAN
ES0.1 SCALE: 1"=30'-0"



HAMMERS

CONSTRUCTION INC.

COMMERCIAL GENERAL CONTRACTORS SPECIALIZING IN DESIGN/BUILD

PRESIDENT: STEVE R. HAMMERS

VICE PRES: DAVID J. HAMMERS

1411 WOOLSEY HEIGHTS

COLORADO SPRINGS, CO 80915

(719) 570-1599 FAX (719) 570-7008

www.hammersconstruction.com

THIS DRAWING CONTAINS MATERIAL & INFORMATION WHICH MAY NOT BE REPRODUCED WITHOUT WRITTEN CONSENT OF HAMMERS CONSTRUCTION, INC. THESE DRAWINGS ARE INTENDED TO BE USED ONLY BY HAMMERS CONSTRUCTION & ITS REPRESENTATIVES. THESE DRAWINGS HAVE NOT BEEN PREPARED FOR ANY OTHER PURPOSE THAN TO INDICATE THE GENERAL FEATURES AND PLACEMENT OF THE PROPOSED PROJECT. COPYRIGHT © 2023 HAMMERS CONSTRUCTION

WIRENUT

HOME SERVICES

6365 E PLATTE AVE.

COLORADO SPRINGS, CO 80915

EL PASO, COLORADO

McShea Consulting, LLC
MECHANICAL • ELECTRICAL • PLUMBING
1800 S. WILLOW AVE.
COLORADO SPRINGS, CO 80907
mcsheaconsulting.com
Project 23-7137

2023/05/15

DATE: MAY 15, 2023

DRAWN BY: C. FORRESTER

PROJ. MNGR: J. BUTLER

SCALE: SEE PLAN

APPROVED BY: MRM

JOB NO: 1280

RESUBMITTALS:

ES0.1

[illegible][illegible]

 LITHONIA LIGHTING
© 2014-2021 Acuity Brands Lighting, Inc. All rights reserved. Rev. 05/06/21

L1DNE

Emergency Battery Pack Options - Field Installable


Battery Model/Number	Voltage	Service Interval	Common Output at 120° Ambient Heat	Other
14-0292-01.0	12V	120	500	Stays On/Off / Runs first time
14-0292-01.0	12V	60	1000	
14-0292-01.0-01.0	12V	60	1000	Time 24, Self-Diagnose
14-0292-01.0-01.0	12V	60	1000	Time 24, Self-Diagnose
14-0292-01.0	220V	60	2000	Time 20
14-0292-01.0	220V	60	2000	Time 24, Self-Diagnose
14-0292-01.0-01.0	12V	60	1000	14-0400 At Night, Time 20, Self-Diagnose
14-0292-01.0-01.0	12V	60	1000	14-0400 At Night, Time 20, Self-Diagnose

All the above are UL listed products that are certified for field install and extend life to the battery.

*Minimum difference between output and in put product depends on environment/room breathing length.

The 220V battery emergency operation requires separate 240V 50/60Hz emergency battery.

Please contact us at info@lithonia-lighting.com for any emergency battery related questions.



009491296 - One Lithonia Way, Cary, GA 27513 Phone 919-755-5289 (7/17)

www.lithonia.com

© 2014-2021 Axley Bruck Lighting, Inc. All rights reserved. Doc 6156623

L1DNE

[illegible]

Accessories

REKASO D800	REKASO slim universal back panel (back)
REKASO D800-1	REKASO universal mounting hole (front)

NOTES

1. For F1/F20/F20W and F20W, 20W and 20W-1 are available in 20W.
2. 20W and 20W-1 are available in 20W.
3. 30W and 40W are available with 0-10V dimming, SmartSensor with 0-10V dimming.
4. 40W and 40W-1 are available with 0-10V dimming, SmartSensor with 0-10V dimming.
5. 40W and 40W-1 are available with 0-10V dimming, SmartSensor with 0-10V dimming.
6. 40W and 40W-1 are available with 0-10V dimming, SmartSensor with 0-10V dimming.
7. 40W and 40W-1 are available with 0-10V dimming, SmartSensor with 0-10V dimming.
8. 40W and 40W-1 are available with 0-10V dimming, SmartSensor with 0-10V dimming.
9. 40W and 40W-1 are available with 0-10V dimming, SmartSensor with 0-10V dimming.
10. 40W and 40W-1 are available with 0-10V dimming, SmartSensor with 0-10V dimming.

Performance Data

Lumen Output

Lumen output data for photometric tests performed in accordance with IESNA LM-79-08. Data is normalized to the representative of the configurations shown, unless the luminaires include Lighting Facts. Contact Factory for performance data on any configuration not shown here.

		Lumen Output											
		F1/F20W				F1/F20W				F1/F20W			
		10W	15W	20W	30W	10W	15W	20W	30W	10W	15W	20W	30W
F1/F20W	10W	1,036	179	0	0	1,036	179	0	0	1,031	178	0	0
	15W	1,031	122	0	0	1,201	126	0	0	1,201	119	0	0
F1/F20W	15W	1,879	129	1	0	1,967	134	1	0	1,939	139	1	0
	20W	1,879	129	1	0	1,967	134	1	0	1,939	139	1	0
F1/F20W	20W	1,036	129	1	0	1,036	129	1	0	1,031	128	1	0
	30W	1,036	129	1	0	1,031	128	1	0	1,031	128	1	0
F1	10W	1,283	132	0	0	1,283	132	0	0	1,279	132	0	0
	15W	1,283	132	0	0	1,283	132	0	0	1,279	132	0	0
F1	15W	1,436	132	0	0	1,436	132	0	0	1,432	132	0	0
	20W	1,436	132	0	0	1,436	132	0	0	1,432	132	0	0
F1	20W	1,436	132	0	0	1,436	132	0	0	1,432	132	0	0
	30W	1,436	132	0	0	1,436	132	0	0	1,432	132	0	0
F1	30W	1,436	132	0	0	1,436	132	0	0	1,432	132	0	0
	40W	1,436	132	0	0	1,436	132	0	0	1,432	132	0	0
F1	40W	1,436	132	0	0	1,436	132	0	0	1,432	132	0	0
	50W	1,436	132	0	0	1,436	132	0	0	1,432	132	0	0
F1	50W	1,436	132	0	0	1,436	132	0	0	1,432	132	0	0
	60W	1,436	132	0	0	1,436	132	0	0	1,432	132	0	0

Lumen Load

		F1/F20W				F1/F20W				F1/F20W			
		10W	15W	20W	30W	10W	15W	20W	30W	10W	15W	20W	30W
F1/F20W	10W	0.942	0.449	0.541	0.838	—	—	—	—	0.946	0.891	—	—
	15W	—	—	—	—	0.946	0.891	—	—	—	—	—	—
F1/F20W	15W	0.912	0.881	0.872	0.884	—	—	—	—	0.955	0.941	—	—

Performance Data									
Lumen Ambien Temperature (L47) Temperatures									
Our Lumen Ambien is dependent on ambient temperature but is always ambient temperature Range: 40°C to 125°C									
				Candela (cd)					
				100	200	300	400	500	600
40°C	237		1.84						
55°C	237		1.84						
70°C	237		1.84						
85°C	237		1.84						
100°C	237		1.84						
115°C	237		1.84						
130°C	237		1.84						
145°C	237		1.84						
160°C	237		1.84						
175°C	237		1.84						
190°C	237		1.84						
205°C	237		1.84						
220°C	237		1.84						
235°C	237		1.84						
250°C	237		1.84						
265°C	237		1.84						
280°C	237		1.84						
295°C	237		1.84						
310°C	237		1.84						
325°C	237		1.84						
340°C	237		1.84						
355°C	237		1.84						
370°C	237		1.84						
385°C	237		1.84						
400°C	237		1.84						
415°C	237		1.84						
430°C	237		1.84						
445°C	237		1.84						
460°C	237		1.84						
475°C	237		1.84						
490°C	237		1.84						
505°C	237		1.84						
520°C	237		1.84						
535°C	237		1.84						
550°C	237		1.84						
565°C	237		1.84						
580°C	237		1.84						
595°C	237		1.84						
610°C	237		1.84						
625°C	237		1.84						
640°C	237		1.84						
655°C	237		1.84						
670°C	237		1.84						
685°C	237		1.84						
700°C	237		1.84						
715°C	237		1.84						
730°C	237		1.84						
745°C	237		1.84						
760°C	237		1.84						
775°C	237		1.84						
790°C	237		1.84						
805°C	237		1.84						
820°C	237		1.84						
835°C	237		1.84						
850°C	237		1.84						
865°C	237		1.84						
880°C	237		1.84						
895°C	237		1.84						
910°C	237		1.84						
925°C									

D-Series Size 1

LED Area Luminaire

Buy American

Size 1 is not available in 120V or 277V configurations

Options

Specifications

Length	15.0 in.
Width	15.0 in.
Depth	3.5 in.
Weight	13.0 lb
Height H1	12.0 in.
Height H2	3.5 in.
Weight	
Mount	22 lbs.


Introduction

The modern styling of the D-Series is striking yet unobtrusive, making a subtle, progressive statement even as it blends seamlessly with its environment. The D-Series adds the benefits of the latest LED technology into a high performance, efficient, long-life luminaire.

The outstanding photometric performance results in spots with excellent uniformity, greater pole stand and lower power density. It is ideal for replacing up to 750W metal halide in pedestrian and area lighting applications with typical energy savings of 60% and expected service life of over 100,000 hours.

Ordering Information

DSX110				EXAMPLE: DSX1 LED P7 40K TSM MVOLT SPA NLTARZ PIRRN DBXB			
Series	LED	Color Temperature	Wavelength	Beam Angle	Beam Angle	Beam Angle	Beam Angle
DSX110	Advanced optics	50K	705 nm	7° spot 1/40° flood	DSX110	Standard	Standard
P7	P7	50K	4000K	7° spot 1/40° flood	50K2	SPA	Spot/pole mounting
P2	P2	50K	5000K	7° spot 1/40° flood	277R4000	SPA	Recessed pole mount
P3	P3	50K	5000K	7° spot 1/40° flood	277R4000	SPA	Recessed pole mount
P4	P4	50K	5000K	7° spot 1/40° flood	277R4000	SPA	Recessed pole mount
P5	P5	50K	5000K	7° spot 1/40° flood	277R4000	SPA	Recessed pole mount
P6	P6	50K	5000K	7° spot 1/40° flood	277R4000	SPA	Recessed pole mount
P7	P7	50K	5000K	7° spot 1/40° flood	277R4000	SPA	Recessed pole mount
P8	P8	50K	5000K	7° spot 1/40° flood	277R4000	SPA	Recessed pole mount
P9	P9	50K	5000K	7° spot 1/40° flood	277R4000	SPA	Recessed pole mount
P10	P10	50K	5000K	7° spot 1/40° flood	277R4000	SPA	Recessed pole mount
P11	P11	50K	5000K	7° spot 1/40° flood	277R4000	SPA	Recessed pole mount
P12	P12	50K	5000K	7° spot 1/40° flood	277R4000	SPA	Recessed pole mount
P13	P13	50K	5000K	7° spot 1/40° flood	277R4000	SPA	Recessed pole mount
P14	P14	50K	5000K	7° spot 1/40° flood	277R4000	SPA	Recessed pole mount
P15	P15	50K	5000K	7° spot 1/40° flood	277R4000	SPA	Recessed pole mount
P16	P16	50K	5000K	7° spot 1/40° flood	277R4000	SPA	Recessed pole mount
P17	P17	50K	5000K	7° spot 1/40° flood	277R4000	SPA	Recessed pole mount
P18	P18	50K	5000K	7° spot 1/40° flood	277R4000	SPA	Recessed pole mount
P19	P19	50K	5000K	7° spot 1/40° flood	277R4000	SPA	Recessed pole mount
P20	P20	50K	5000K	7° spot 1/40° flood	277R4000	SPA	Recessed pole mount
P21	P21	50K	5000K	7° spot 1/40° flood	277R4000	SPA	Recessed pole mount
P22	P22	50K	5000K	7° spot 1/40° flood	277R4000	SPA	Recessed pole mount
P23	P23	50K	5000K	7° spot 1/40° flood	277R4000	SPA	Recessed pole mount
P24	P24	50K	5000K	7° spot 1/40° flood	277R4000	SPA	Recessed pole mount
P25	P25	50K	5000K	7° spot 1/40° flood	277R4000	SPA	Recessed pole mount
P26	P26	50K	5000K	7° spot 1/40° flood	277R4000	SPA	Recessed pole mount
P27	P27	50K	5000K	7° spot 1/40° flood	277R4000	SPA	Recessed pole mount
P28	P28	50K	5000K	7° spot 1/40° flood	277R4000	SPA	Recessed pole mount
P29	P29	50K	5000K	7° spot 1/40° flood	277R4000	SPA	Recessed pole mount
P30	P30	50K	5000K	7° spot 1/40° flood	277R4000	SPA	Recessed pole mount
P31	P31	50K	5000K	7° spot 1/40° flood	277R4000	SPA	Recessed pole mount
P32	P32	50K	5000K	7° spot 1/40° flood	277R4000	SPA	Recessed pole mount
P33	P33	50K	5000K	7° spot 1/40° flood	277R4000	SPA	Recessed pole mount
P34	P34	50K	5000K	7° spot 1/40° flood	277R4000	SPA	Recessed pole mount
P35	P35	50K	5000K	7° spot 1/40° flood	277R4000	SPA	Recessed pole mount
P36	P36	50K	5000K	7° spot 1/40° flood	277R4000	SPA	

[illegible][illegible]

HAMMERS
CONSTRUCTION INC.

COMMERCIAL GENERAL CONTRACTORS SPECIALIZING IN DESIGN/BUILD

PRESIDENT: STEVE R. HAMMERS
VICE PRES: DAVID L. HAMMERS
1411 WOODLEY HEIGHTS
COLORADO SPRINGS, CO 80915
(719) 570-1599 FAX (719) 570-7008
www.hammersconstruction.com

THIS DRAWING CONTAINS MATERIAL & INFORMATION WHICH MAY NOT BE REPRODUCED WITHOUT WRITTEN CONSENT OF HAMMERS CONSTRUCTION, INC. THESE DRAWINGS ARE INTENDED TO BE USED ONLY BY HAMMERS CONSTRUCTION & ITS REPRESENTATIVES. THESE DRAWINGS HAVE NOT BEEN PREPARED FOR ANY OTHER PURPOSE THAN TO INDICATE THE GENERAL FEATURES AND PLACEMENT OF THE PROPOSED PROJECT. COPYRIGHT © 2023 HAMMERS CONSTRUCTION

WIRENUT
HOME SERVICES
6365 E PLATTE AVE.
COLORADO SPRINGS, CO 80915
EL PASO, COLORADO

mcShea consulting, LLC
MECHANICAL + ELECTRICAL + PLUMBING
4445 Northpark, Dr., Suite 200
Colorado Springs, CO 80907
mcSheaconsulting.com
Project 23-7137



DATE: MAY 15, 2023
DRAWN BY: C. FORRESTER
PROJ. MNGR: J. BUTLER
SCALE: SEE PLAN
APPROVED BY: MRM
JOB NO: 1280

RESUBMITTALS:

ES0.2