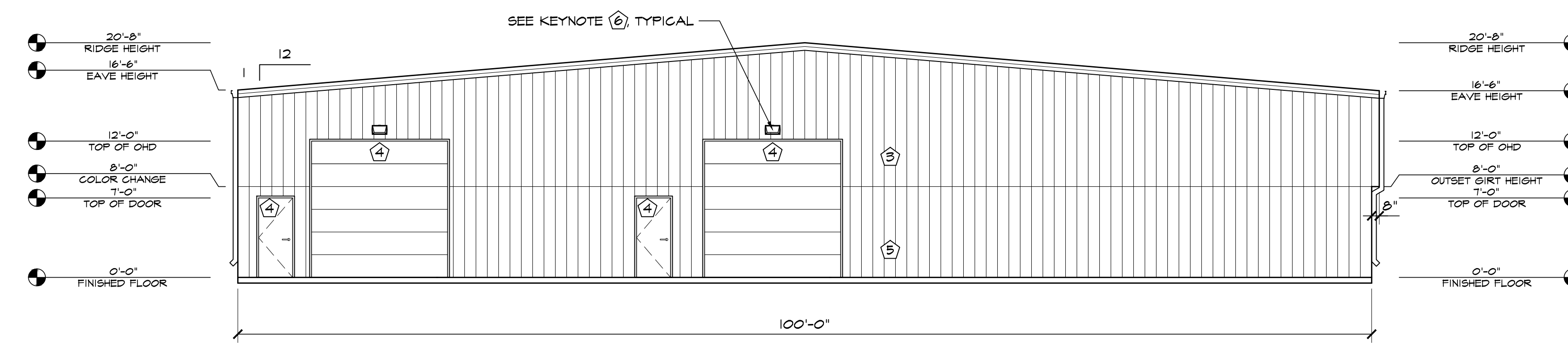


1 WEST ELEVATION
SCALE: 1/8"=1'-0"

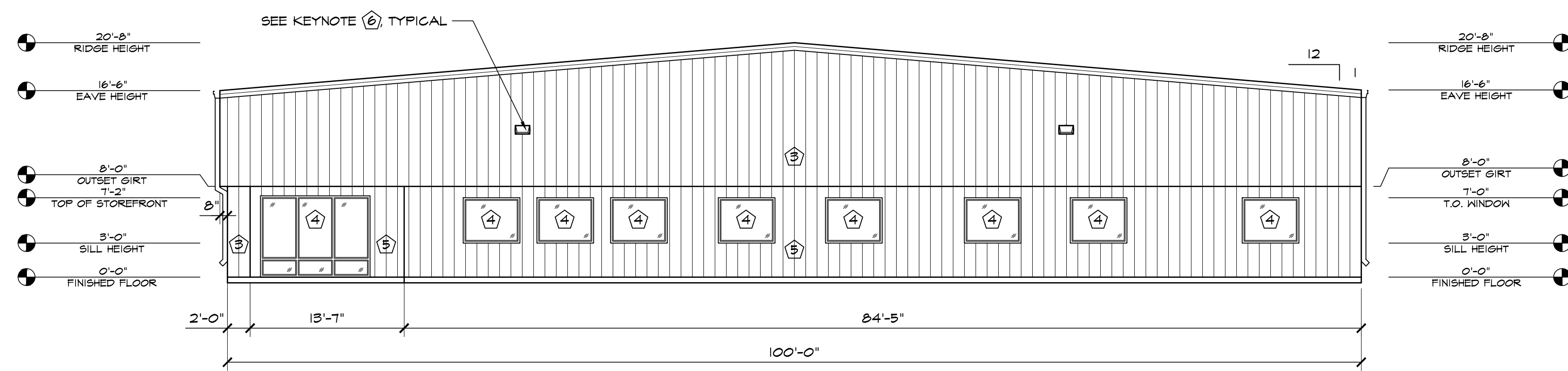
Add note "Gas meters must be a minimum of 3-feet away from any opening in walls".

Confirm location and clearance for electric meters from openings.

For CSU gas and electric contact Field Engineering. Please reach out to Mary Hoaglund at 719-668-4985.

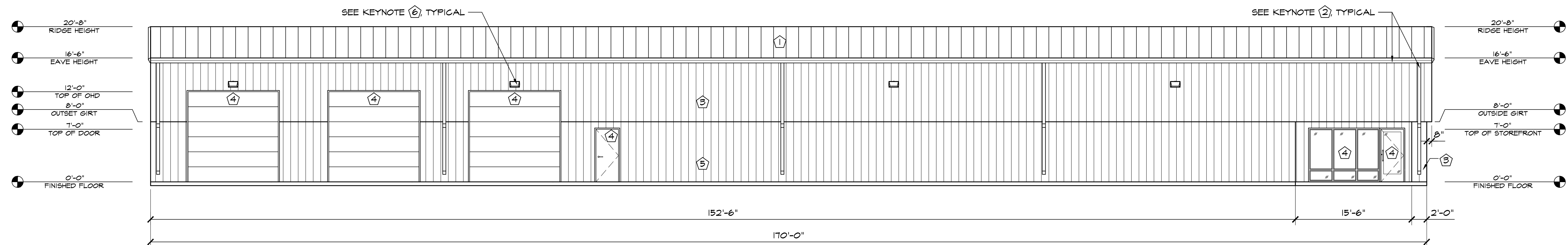


2 SOUTH ELEVATION
SCALE: 1/8"=1'-0"



3 NORTH ELEVATION
SCALE: 1/8"=1'-0"

ELEVATION KEY NOTES	
①	PREFINISHED 24 GA. "PBR" PANELS BY METAL BUILDING PROVIDER, COBALT BLUE
②	PREFINISHED GUTTER & DOWNSPOUTS BY METAL BUILDING PROVIDER
③	PREFINISHED 26 GA. "PBR" METAL WALL PANELS BY METAL BUILDING PROVIDER, COBALT BLUE
④	SEE SCHEDULES ON "A" SHEETS FOR ALL DOOR INFORMATION
⑤	PREFINISHED 26 GA. "PBR" METAL WALL PANELS BY METAL BUILDING PROVIDER, SNOW WHITE
⑥	WALL PACK LIGHT TOP OF LIGHT @ 13'-6" A.F.F. UNLESS OTHERWISE NOTED



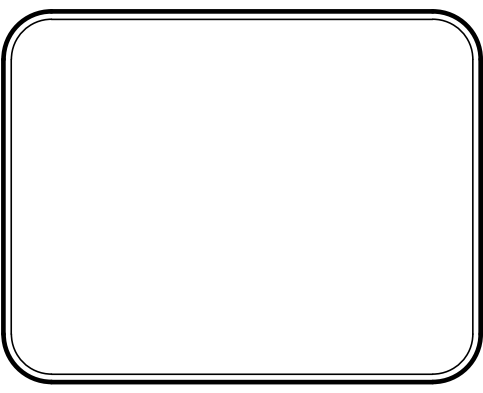
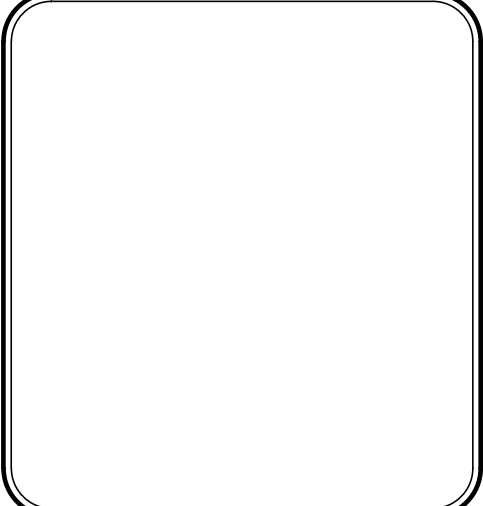
4 EAST ELEVATION
SCALE: 1/8"=1'-0"

COUNTY FILE NO: PPR-2234

HAMMERS CONSTRUCTION INC.
COMMERCIAL GENERAL CONTRACTORS SPECIALIZING IN DESIGN/BUILD
PRESIDENT: STEVE R. HAMMERS
VICE PRES: DAVID J. HAMMERS
1411 WOOLSEY HEIGHTS
COLORADO SPRINGS, CO 80915
(719) 570-1599 FAX (719) 570-7008
www.hammersconstruction.com

THIS DRAWING CONTAINS MATERIAL & INFORMATION WHICH MAY NOT BE REPRODUCED WITHOUT WRITTEN CONSENT OF HAMMERS CONSTRUCTION INC. THESE DRAWINGS ARE INTENDED TO BE USED ONLY BY HAMMERS CONSTRUCTION & ITS REPRESENTATIVES. THESE DRAWINGS HAVE NOT BEEN PREPARED FOR ANY OTHER PURPOSE THAN TO INDICATE THE GENERAL FEATURES AND PLACEMENT OF THE PROPOSED PROJECT. COPYRIGHT © 2023 HAMMERS CONSTRUCTION

WIENUT HOME SERVICES
6365 E PLATTE AVE.
COLORADO SPRINGS, CO 80915
EL PASO, COLORADO



DATE: JUN. 13, 2022
DRAWN BY: J.CANTERBERRY
PROJ. MGR: J. BUTLER
SCALE: SEE PLAN
APPROVED BY:
JOB NO: 1280

RESUBMITTALS:	
▲	4-23-22/DP COMMENTS 1-15-22
▲	6-23-23/COMMENTS 10-23-22
▲	
▲	
▲	