

FLYING HORSE NORTH FILING NO. 1

A PORTION OF SECTIONS 34, 35 AND 36 TOWNSHIP 11 SOUTH, RANGE 66 WEST, AND A PORTION OF SECTIONS 30 AND 31, TOWNSHIP 11 SOUTH, RANGE 65 WEST OF THE SIXTH PRINCIPAL MERIDIAN, EL PASO COUNTY, COLORADO

KNOW ALL MEN BY THESE PRESENTS:

THAT PRI #2, LLC A COLORADO LIMITED LIABILITY COMPANY BEING THE OWNER OF THE FOLLOWING DESCRIBED TRACT OF LAND TO WIT:

LEGAL DESCRIPTION:

2 PARCELS OF LAND BEING A PORTION OF SECTIONS 34, 35 AND 36, TOWNSHIP 11 SOUTH, RANGE 66 WEST OF THE SIXTH PRINCIPAL MERIDIAN, EL PASO COUNTY, COLORADO AND A PORTION OF SECTIONS 30 AND 31, TOWNSHIP 11 SOUTH, RANGE 65 WEST OF THE SIXTH PRINCIPAL MERIDIAN, EL PASO COUNTY, COLORADO, BEING MORE PARTICULARLY DESCRIBED AS FOLLOWS:

BASIS OF BEARINGS: THE EAST LINE OF SECTION 35, TOWNSHIP 11 SOUTH, RANGE 66 WEST OF THE SIXTH PRINCIPAL MERIDIAN, EL PASO COUNTY, COLORADO, BEING MONUMENTED AT THE NORTH END BY A 2 1/2" ALUMINUM CAP STAMPED "22564" AND THE SOUTH END BY A 2 1/2" ALUMINUM CAP STAMPED "9132", IS ASSUMED TO BEAR S00°14'34"E, A DISTANCE OF 5269.38 FEET.

PARCEL 1:

COMMENCING AT THE NORTHWEST CORNER OF SECTION 36, TOWNSHIP 11 SOUTH, RANGE 66 WEST OF THE SIXTH PRINCIPAL MERIDIAN, EL PASO COUNTY, COLORADO, SAID POINT BEING THE POINT OF BEGINNING;

THENCE N89°06'04"E, ON THE SOUTHERLY BOUNDARY OF HIGH FOREST RANCH FILING NO. 2, RECORDED UNDER RECEPTION NO. 202134767, RECORDS OF EL PASO COUNTY, COLORADO AND THE NORTH LINE OF THE NORTHWEST QUARTER OF THE NORTHWEST QUARTER OF SAID SECTION 36, A DISTANCE OF 1332.12 FEET TO THE SOUTHEASTERLY CORNER OF SAID HIGH FOREST RANCH FILING NO. 2, SAID POINT BEING THE WEST SIXTEENTH CORNER OF SAID SECTION 36; THENCE N89°07'00"E, ON THE NORTH LINE OF THE NORTHEAST QUARTER OF THE NORTHWEST QUARTER OF SAID SECTION 36, A DISTANCE OF 1331.92 FEET TO THE NORTH QUARTER CORNER OF SAID SECTION 36;

THENCE N89°01'18"E, ON THE NORTH LINE OF THE NORTHWEST QUARTER OF THE NORTHEAST QUARTER OF SAID SECTION 36, A DISTANCE OF 1331.92 FEET TO THE EAST SIXTEENTH CORNER OF SAID SECTION 36;

THENCE N89°03'58"E, ON THE NORTH LINE OF THE NORTHEAST QUARTER OF THE NORTHEAST QUARTER OF SAID SECTION 36, A DISTANCE OF 840.89 FEET;

THENCE S00°13'46"E, A DISTANCE OF 497.29 FEET TO A POINT ON CURVE;

THENCE ON THE ARC OF A CURVE TO THE LEFT WHOSE CENTER BEARS N16°35'58"W, HAVING A DELTA OF 00°45'53", A RADIUS OF 3460.00 FEET AND A DISTANCE OF 46.18 FEET TO A POINT ON CURVE;

THENCE N72°38'09"E, A DISTANCE OF 400.46 FEET TO A POINT OF CURVE;

THENCE ON THE ARC OF A CURVE TO THE RIGHT HAVING A DELTA OF 32°53'45", A RADIUS OF 1640.00 FEET AND A DISTANCE OF 941.59 FEET TO A POINT OF TANGENT;

THENCE S74°28'06"E, A DISTANCE OF 169.05 FEET TO A POINT OF CURVE;

THENCE ON THE ARC OF A CURVE TO THE LEFT, HAVING A DELTA OF 52°50'29", A RADIUS OF 760.00 FEET AND A DISTANCE OF 700.92 FEET TO A POINT OF TANGENT;

THENCE N52°41'25"E, A DISTANCE OF 1610.12 FEET TO A POINT OF CURVE;

THENCE ON THE ARC OF A CURVE TO THE RIGHT HAVING A DELTA OF 38°46'50", A RADIUS OF 1040.00 FEET AND A DISTANCE OF 703.92 FEET TO A POINT OF TANGENT;

THENCE S88°31'45"E, A DISTANCE OF 8.27 FEET TO A POINT ON CURVE;

THENCE ON THE ARC OF A CURVE TO THE RIGHT WHOSE CENTER BEARS S64°57'04"E, HAVING A DELTA OF 52°02'48", A RADIUS OF 100.00 FEET AND A DISTANCE OF 90.84 FEET TO A POINT ON CURVE;

THENCE ON THE ARC OF A CURVE TO THE RIGHT WHOSE CENTER BEARS S80°31'04"E, HAVING A DELTA OF 24°24'59", A RADIUS OF 530.00 FEET AND A DISTANCE OF 225.86 FEET TO A POINT ON CURVE;

THENCE S56°06'05"E, A DISTANCE OF 60.00 FEET;

THENCE S80°16'16"E, A DISTANCE OF 554.19 FEET;

THENCE N06°27'11"E, A DISTANCE OF 236.35 FEET;

THENCE S82°41'19"E, A DISTANCE OF 492.47 FEET;

THENCE S89°59'04"E, A DISTANCE OF 502.35 FEET TO A POINT ON THE WESTERLY RIGHT OF WAY LINE OF BLACK FOREST ROAD, SAID POINT BEING ON A LINE 30.00 WEST OF AND PARALLEL TO THE EAST LINE OF THE SOUTHEAST QUARTER OF SECTION 30, TOWNSHIP 11 SOUTH, RANGE 65 WEST OF THE SIXTH PRINCIPAL MERIDIAN;

THENCE S00°00'53"W ON SAID WESTERLY RIGHT OF WAY LINE AND SAID PARALLEL LINE, A DISTANCE OF 1136.17 FEET TO A POINT ON THE SOUTH LINE OF THE SOUTHEAST QUARTER OF THE SOUTHEAST QUARTER OF SAID SECTION 30;

THENCE S89°04'37"W, ON SAID SOUTH LINE, A DISTANCE OF 1145.71 FEET;

THENCE N00°00'00"E, A DISTANCE OF 477.97 FEET;

THENCE S89°59'56"W, A DISTANCE OF 505.80 FEET;

THENCE N89°25'32"W, A DISTANCE OF 60.00 FEET TO A POINT ON CURVE;

THENCE ON THE ARC OF A CURVE TO THE RIGHT WHOSE CENTER BEARS S89°25'32"E, HAVING A DELTA OF 00°53'47", A RADIUS OF 5030.00 FEET AND A DISTANCE OF 78.69 FEET TO A POINT OF TANGENT;

THENCE N01°28'15"E, A DISTANCE OF 152.16 FEET TO A POINT ON CURVE;

THENCE ON THE ARC OF A CURVE TO THE RIGHT WHOSE CENTER BEARS N18°55'42"E, HAVING A DELTA OF 48°57'51", A RADIUS OF 100.00 FEET AND A DISTANCE OF 85.46 FEET TO A POINT ON CURVE;

THENCE N88°31'45"W, A DISTANCE OF 8.27 FEET TO A POINT OF CURVE;

THENCE ON THE ARC OF A CURVE TO THE LEFT, HAVING A DELTA OF 38°46'50", A RADIUS OF 960.00 FEET AND A DISTANCE OF 649.77 FEET TO A POINT OF TANGENT;

THENCE S52°41'25"W, A DISTANCE OF 1610.12 FEET TO A POINT OF CURVE;

THENCE ON THE ARC OF A CURVE TO THE RIGHT, HAVING A DELTA OF 52°50'29", A RADIUS OF 840.00 FEET AND A DISTANCE OF 774.70 FEET TO A POINT OF TANGENT;

THENCE N74°28'06"W, A DISTANCE OF 169.05 FEET TO A POINT OF CURVE;

THENCE ON THE ARC OF A CURVE TO THE LEFT, HAVING A DELTA OF 13°40'23", A RADIUS OF 1560.00 FEET AND A DISTANCE OF 372.28 FEET TO A POINT ON CURVE;

THENCE S02°34'45"W, A DISTANCE OF 964.84 FEET;

THENCE S56°12'59"E, A DISTANCE OF 96.82 FEET TO POINT "A";

THENCE S65°45'45"W, A DISTANCE OF 64.75 FEET TO A POINT OF CURVE;

THENCE ON THE ARC OF A CURVE TO THE LEFT, HAVING A DELTA OF 54°21'11", A RADIUS OF 330.00 FEET, AND A DISTANCE OF 313.05 FEET TO A POINT ON CURVE ;

THENCE S83°30'56"W, A DISTANCE OF 43.73 FEET;

THENCE S30°43'19"W, A DISTANCE OF 748.70 FEET TO A POINT OF CURVE;

THENCE ON THE ARC OF A CURVE TO THE LEFT, HAVING A DELTA OF 19°27'35", A RADIUS OF 180.00 FEET AND A DISTANCE OF 61.13 FEET TO A POINT OF TANGENT;

THENCE S11°15'44"W, A DISTANCE OF 449.78 FEET TO A POINT ON CURVE;

THENCE ON THE ARC OF A CURVE TO THE RIGHT WHOSE CENTER BEARS S03°26'35"E, HAVING A DELTA OF 11°34'18", A RADIUS OF 80.00 FEET AND A DISTANCE OF 158.74 FEET TO A POINT ON CURVE;

THENCE S11°16'18"W, A DISTANCE OF 794.70 FEET;

THENCE S10°53'40"W, A DISTANCE OF 511.85 FEET;

THENCE S01°41'01" W, A DISTANCE OF 409.04 FEET TO A POINT OF CURVE;

THENCE ON THE ARC OF A CURVE TO THE RIGHT HAVING A DELTA OF 105°57'32", A RADIUS OF 163.50 FEET AND A DISTANCE OF 339.35 FEET;

THENCE S43°30'36"W, A DISTANCE OF 161.72 FEET;

THENCE S19°16'02"W, A DISTANCE OF 386.88 FEET;

THENCE N88°18'15"W, A DISTANCE OF 1705.84 FEET;

THENCE N02°21'44"W, A DISTANCE OF 263.10 FEET;

THENCE N63°45'49"W, A DISTANCE OF 50.01 FEET TO A POINT ON CURVE;

THENCE ON THE ARC OF A CURVE TO THE LEFT WHOSE CENTER BEARS N18°31'13"W, HAVING A DELTA OF 24°06'18", A RADIUS OF 530.00 FEET AND A DISTANCE OF 222.98 FEET TO A POINT ON CURVE;

THENCE S38°18'58"E, A DISTANCE OF 58.41 FEET;

THENCE N89°54'56"E, A DISTANCE OF 681.31 FEET;

THENCE S78°50'05" E, A DISTANCE OF 682.24 FEET;

THENCE N44°23'58"E, A DISTANCE OF 446.26 FEET TO A POINT ON CURVE;

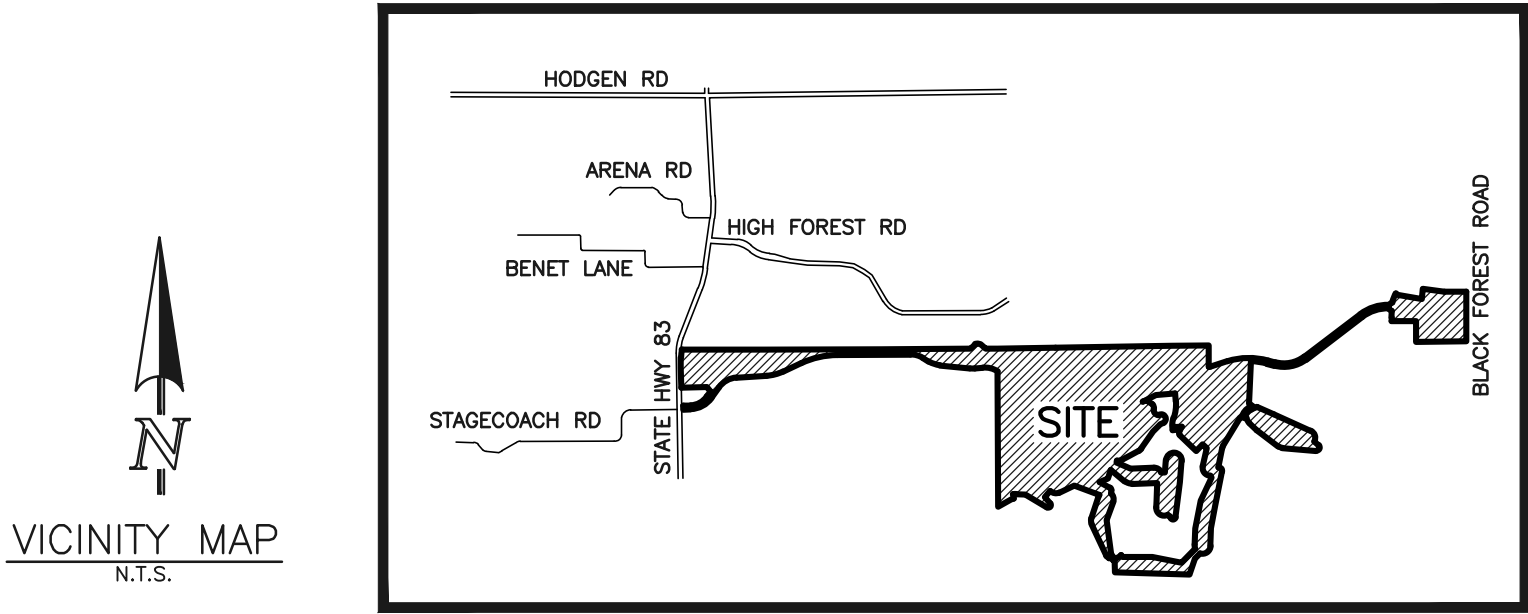
THENCE ON THE ARC OF A CURVE TO THE RIGHT WHOSE CENTER BEARS N70°04'16"E, HAVING A DELTA OF 27°10'25", A RADIUS OF 206.15 FEET AND A DISTANCE OF 97.77 FEET TO A POINT ON CURVE;

THENCE N01°45'55"E, A DISTANCE OF 367.28 FEET;

THENCE N11°05'37"E, A DISTANCE OF 649.91 FEET;

THENCE N25°28'43"E, A DISTANCE OF 583.21 FEET;

THENCE N36°07'10"W, A DISTANCE OF 51.40 FEET TO A POINT ON CURVE;



LEGAL DESCRIPTION: (CONTINUED)

THENCE ON THE ARC OF A CURVE TO THE RIGHT WHOSE CENTER BEARS N00°13'39"E, HAVING A DELTA OF 101°02'05", A RADIUS OF 180.00 FEET, AND A DISTANCE OF 317.41 FEET TO A POINT ON CURVE ;

THENCE N12°39'47"E, A DISTANCE OF 431.89 FEET;

THENCE N47°25'19"W, A DISTANCE OF 125.23 FEET;

THENCE S43°38'05"W, A DISTANCE OF 217.42 FEET;

THENCE N45°19'30"W, A DISTANCE OF 529.41 FEET TO A POINT OF CURVE;

THENCE ON THE ARC OF A CURVE TO THE RIGHT, HAVING A DELTA OF 79°31'17", A RADIUS OF 60.00 FEET AND A DISTANCE OF 83.27 FEET;

THENCE N27°57'38"E, A DISTANCE OF 123.86 FEET;

THENCE S88°03'35"W, A DISTANCE OF 162.46 FEET TO A POINT ON CURVE;

THENCE ON THE ARC OF A CURVE TO THE LEFT WHOSE CENTER BEARS N85°59'29"E, HAVING A DELTA OF 07°44'47", A RADIUS OF 470.00 FEET AND A DISTANCE OF 63.54 FEET;

THENCE S78°14'42"W, A DISTANCE OF 60.00 FEET;

THENCE S75°00'00"W, A DISTANCE OF 81.52 FEET TO A POINT OF CURVE;

THENCE ON THE ARC OF A CURVE TO THE LEFT, HAVING A DELTA OF 32°16'53", A RADIUS OF 330.00 FEET AND A DISTANCE OF 134.09 FEET TO A POINT ON CURVE;

THENCE N38°16'53"W, A DISTANCE OF 216.74 FEET;

THENCE S46°07'49"W, A DISTANCE OF 163.89 FEET;

THENCE S34°25'15"W, A DISTANCE OF 478.77 FEET TO A POINT OF CURVE;

THENCE ON THE ARC OF A CURVE TO THE RIGHT, HAVING A DELTA OF 27°31'13", A RADIUS OF 180.00 FEET AND A DISTANCE OF 86.46 FEET;

THENCE S61°56'28"W, A DISTANCE OF 430.63 FEET TO A POINT OF CURVE;

THENCE ON THE ARC OF A CURVE TO THE RIGHT, HAVING A DELTA OF 37°48'36", A RADIUS OF 180.00 FEET AND A DISTANCE OF 118.90 FEET TO A POINT ON CURVE ;

THENCE S00°25'40"W, A DISTANCE OF 36.95 FEET;

THENCE S66°21'10"E, A DISTANCE OF 348.91 FEET;

THENCE N87°59'49"E, A DISTANCE OF 527.00 FEET TO A POINT OF CURVE;

THENCE ON THE ARC OF A CURVE TO THE RIGHT, HAVING A DELTA OF 68°09'39", A RADIUS OF 180.00 FEET AND A DISTANCE OF 214.13 FEET TO A POINT ON CURVE;

THENCE N89°20'23"E, A DISTANCE OF 87.77 FEET;

THENCE N04°16'45"E, A DISTANCE OF 284.57 FEET TO A POINT OF CURVE;

THENCE ON THE ARC OF A CURVE TO THE RIGHT, HAVING A DELTA OF 180°00'00", A RADIUS OF 180.00 FEET AND A DISTANCE OF 565.49 FEET TO A POINT OF TANGENT;

THENCE S04°16'45"W, A DISTANCE OF 483.65 FEET;

THENCE S07°32'26"W, A DISTANCE OF 809.64 FEET TO A POINT OF CURVE;

THENCE ON THE ARC OF A CURVE TO THE RIGHT, HAVING A DELTA OF 163°01'47", A RADIUS OF 60.00 FEET AND A DISTANCE OF 170.72 FEET TO A POINT OF TANGENT;

THENCE N09°25'47"W, A DISTANCE OF 25.35 FEET;

THENCE N59°17°05"W, A DISTANCE OF 59.71 FEET TO A POINT ON CURVE;

THENCE ON THE ARC OF A CURVE TO THE RIGHT WHOSE CENTER BEARS N28°17'40"W, HAVING A DELTA OF 122°48'28", A RADIUS OF 180.00 FEET AND A DISTANCE OF 385.81 FEET TO A POINT OF TANGENT;

THENCE N04°30'48"E, A DISTANCE OF 138.74 FEET;

THENCE N01°27'54"E, A DISTANCE OF 421.65 FEET;

THENCE S87°34'56"W, A DISTANCE OF 570.22 FEET TO A POINT OF CURVE;

THENCE ON THE ARC OF A CURVE TO THE RIGHT, HAVING A DELTA OF 42°44'34", A RADIUS OF 260.00 FEET AND A DISTANCE OF 193.98 FEET TO A POINT OF TANGENT;

THENCE N49°40'30"W, A DISTANCE OF 407.48 FEET;

THENCE S18°26'34"W, A DISTANCE OF 216.03 FEET;

THENCE S67°30'10"W, A DISTANCE OF 203.94 FEET;

THENCE S60°53'14"E, A DISTANCE OF 270.58 FEET TO A POINT OF CURVE;

THENCE ON THE ARC OF A CURVE TO THE RIGHT, HAVING A DELTA OF 66°48'26", A RADIUS OF 60.00 FEET AND A DISTANCE OF 66.96 FEET TO A POINT OF TANGENT;

THENCE S05°55'12"W, A DISTANCE OF 73.94 FEET TO A POINT ON CURVE;

THENCE ON THE ARC OF A CURVE TO THE RIGHT WHOSE CENTER BEARS S42°03'32"W, HAVING A DELTA OF 65°10'59", A RADIUS OF 180.00 FEET AND A DISTANCE OF 204.78 FEET;

THENCE S19°58'12"W, A DISTANCE OF 445.86 FEET;

THENCE S07°36'57"E, A DISTANCE OF 778.36 FEET;

THENCE S32°14'22"E, A DISTANCE OF 83.48 FEET;

THENCE ON THE ARC OF A CURVE TO THE RIGHT WHOSE CENTER BEARS N22°20'21"W, HAVING A DELTA OF 11°46'40", A RADIUS OF 470.00 FEET AND A DISTANCE OF 96.61 FEET TO A POINT ON CURVE;

THENCE N28°40'51"W, A DISTANCE OF 24.35 FEET TO A POINT ON CURVE;

THENCE ON THE ARC OF A CURVE TO THE RIGHT WHOSE CENTER BEARS N01°53'54"E, HAVING A DELTA OF 62°51'48", A RADIUS OF 60.00 FEET AND A DISTANCE OF 65.83 FEET TO A POINT ON CURVE;

THENCE N24°50'58"W, A DISTANCE OF 794.30 FEET TO A POINT OF CURVE;

THENCE ON THE ARC OF A CURVE TO THE RIGHT, HAVING A DELTA OF 42°54'04", A RADIUS OF 180.00 FEET, AND A DISTANCE OF 134.78 FEET TO A POINT OF TANGENT;

THENCE N18°03'07"E, A DISTANCE OF 513.19 FEET TO A POINT OF CURVE;

THENCE ON THE ARC OF A CURVE TO THE RIGHT, HAVING A DELTA OF 17°58'26", A RADIUS OF 182.00 FEET AND A DISTANCE OF 57.09 FEET TO A POINT ON CURVE;

THENCE N69°37'09"W, A DISTANCE OF 609.64 FEET;

THENCE S64°49'27"W, A DISTANCE OF 387.40 FEET TO A POINT OF CURVE;

THENCE ON THE ARC OF A CURVE TO THE RIGHT, HAVING A DELTA OF 71°05'00", A RADIUS OF 180.00 FEET AND A DISTANCE OF 223.32 FEET TO A POINT ON CURVE;

THENCE S42°12°07"W, A DISTANCE OF 181.16 FEET;

THENCE S40°12'30"E, A DISTANCE OF 188.32 FEET TO A POINT OF CURVE;

THENCE ON THE ARC OF A CURVE TO THE RIGHT, HAVING A DELTA OF 161°01'35", A RADIUS OF 60.00 FEET AND A DISTANCE OF 168.63 FEET TO A POINT OF TANGENT;

THENCE N59°10'55"W, A DISTANCE OF 565.00 FEET;

THENCE N88°12'35"W, A DISTANCE OF 210.24 FEET TO A POINT OF CURVE;

THENCE ON THE ARC OF A CURVE TO THE RIGHT, HAVING A DELTA OF 26°35'09", A RADIUS OF 60.00 FEET AND A DISTANCE OF 27.84 FEET TO A POINT ON CURVE;

THENCE S86°55'25"W, A DISTANCE OF 49.85 FEET TO A POINT ON CURVE;THENCE ON THE ARC OF A CURVE TO THE LEFT WHOSE CENTER BEARS N86°55'25"E, HAVING A DELTA OF 48°03'23", A RADIUS OF 520.00 FEET AND A DISTANCE OF 436.15 FEET TO A POINT ON CURVE;

THENCE S38°52'02"W, A DISTANCE OF 60.00 FEET;

THENCE S40°01'04"W, A DISTANCE OF 569.80 FEET;

THENCE N72°33'10"W, A DISTANCE OF 134.21 FEET TO A POINT ON THE WEST LINE OF SAID SECTION 36;

THENCE N00°14'34"W ON THE WEST LINE OF SAID SECTION 36, A DISTANCE OF 3625.37 FEET TO A POINT ON CURVE;

THENCE ON THE ARC OF A CURVE TO THE LEFT WHOSE CENTER BEARS S33°01'51"W, HAVING A DELTA OF 38°24'48", A RADIUS OF 535.00 FEET AND A DISTANCE OF 358.69 FEET TO A POINT OF TANGENT;

THENCE S84°37'03"W, A DISTANCE OF 175.44 FEET TO A POINT OF CURVE;

THENCE ON THE ARC OF A CURVE TO THE RIGHT HAVING A DELTA OF 11°13'59", A RADIUS OF 615.00 FEET AND A DISTANCE OF 120.57 FEET TO A POINT OF TANGENT;

LEGAL DESCRIPTION: (CONTINUED)

THENCE N84°08'58"W, A DISTANCE OF 684.98 FEET TO A POINT OF CURVE;

THENCE ON THE ARC OF A CURVE TO THE RIGHT HAVING A DELTA OF 25°13'51", A RADIUS OF 615.00 FEET AND A DISTANCE OF 270.82 FEET TO A POINT OF TANGENT;

THENCE N58°55'07"W, A DISTANCE OF 166.51 FEET TO A POINT OF CURVE;

THENCE ON THE ARC OF A CURVE TO THE LEFT HAVING A DELTA OF 31°18'40", A RADIUS OF 535.00 FEET AND A DISTANCE OF 292.37 FEET TO A POINT OF TANGENT;

THENCE S89°46'13"W, A DISTANCE OF 1674.58 FEET TO A POINT OF CURVE;

THENCE ON THE ARC OF A CURVE TO THE LEFT HAVING A DELTA OF 24°52'43", A RADIUS OF 1960.00 FEET AND A DISTANCE OF 851.06 FEET TO A POINT OF TANGENT;

THENCE S64°53'30"W, A DISTANCE OF 459.47 FEET TO A POINT OF CURVE;

THENCE ON THE ARC OF A CURVE TO THE RIGHT HAVING A DELTA OF 21°22'27", A RADIUS OF 1040.00 FEET AND A DISTANCE OF 387.97 FEET TO A POINT OF TANGENT;

THENCE S86°15'57"W, A DISTANCE OF 692.41 FEET TO A POINT OF CURVE;

THENCE ON THE ARC OF A CURVE TO THE LEFT HAVING A DELTA OF 51°05'38", A RADIUS OF 535.00 FEET AND A DISTANCE OF 477.09 FEET TO A POINT OF TANGENT;

THENCE S35°10'18"W, A DISTANCE OF 291.93 FEET TO A POINT OF CURVE;

THENCE ON THE ARC OF A CURVE TO THE RIGHT HAVING A DELTA OF 53°07'49", A RADIUS OF 615.00 FEET AND A DISTANCE OF 570.29 FEET TO A POINT OF TANGENT;

THENCE S88°18'07"W, A DISTANCE OF 160.75 FEET TO A POINT ON THE EASTERLY RIGHT OF WAY LINE OF STATE HIGHWAY 83;

THENCE N01°41'53"W, ON SAID EASTERLY RIGHT OF WAY LINE, A DISTANCE OF 90.00 FEET TO THE SOUTHWESTERLY CORNER OF LOT 1 AS PLATTED IN WESCOTT FIRE STATION NO. 3, RECORDED UNDER RECEPTION NO. 212713192 RECORDS OF EL PASO COUNTY, COLORADO;

THENCE ON THE SOUTHERLY, EASTERLY AND NORTHERLY BOUNDARY OF SAID LOT 1 THE FOLLOWING (5) FIVE COURSES;

1. N88°18'07"E, A DISTANCE OF 165.75 FEET TO A POINT OF CURVE;

2. ON THE ARC OF A CURVE TO THE LEFT HAVING A DELTA OF 54°10'43", A RADIUS OF 460.00 FEET AND A DISTANCE OF 434.97 FEET TO A POINT OF REVERSE CURVE;

3. ON THE ARC OF A CURVE TO THE RIGHT HAVING A DELTA OF 15°19'05", A RADIUS OF 560.00 FEET AND A DISTANCE OF 149.72 FEET TO A POINT ON CURVE;

FLYING HORSE NORTH FILING NO. 1

A PORTION OF SECTIONS 34, 35 AND 36 TOWNSHIP 11 SOUTH, RANGE 66 WEST, AND A PORTION OF SECTIONS 30 AND 31, TOWNSHIP 11 SOUTH, RANGE 65 WEST OF THE SIXTH PRINCIPAL MERIDIAN, EL PASO COUNTY, COLORADO

LEGAL DESCRIPTION(CONT.):

THENCE N89°46'13"E, CONTINUING ON SAID SOUTHERLY BOUNDARY OF HIGH FOREST RANCH FILING NO. 1 AND ON THE NORTH LINE OF THE NORTHWEST QUARTER OF SECTION 35, TOWNSHIP 11 SOUTH, RANGE 66 WEST OF THE SIXTH PRINCIPAL MERIDIAN, EL PASO COUNTY, COLORADO, A DISTANCE OF 2660.56 FEET TO THE NORTH QUARTER CORNER OF SAID SECTION 35;
THENCE N89°45'50"E, CONTINUING ON SAID SOUTHERLY BOUNDARY OF HIGH FOREST RANCH FILING NO. 1, ON THE NORTH LINE OF THE NORTHEAST QUARTER OF SAID SECTION 35 AND THE SOUTHERLY BOUNDARY OF HIGH FOREST RANCH FILING NO. 2, RECORDED UNDER RECEPTION NO. 202134767, A DISTANCE OF 2048.33 FEET;

THENCE ON SAID SOUTHERLY BOUNDARY OF HIGH FOREST RANCH FILING NO. 2, THE FOLLOWING (5) FIVE COURSES:

1. N44°21'15"E, A DISTANCE OF 120.12 FEET;
2. N27°42'44"E, A DISTANCE OF 30.37 FEET;
3. N83°51'56"E, A DISTANCE OF 62.76 FEET;
4. S79°32'21"E, A DISTANCE OF 69.45 FEET;
5. S46°40'23"E, A DISTANCE OF 153.82 FEET TO A POINT ON SAID NORTH LINE OF THE NORTHEAST QUARTER OF SAID SECTION 35;

THENCE N89°48'10"E, ON SAID SOUTHERLY BOUNDARY OF HIGH FOREST RANCH FILING NO. 2 AND SAID NORTH LINE OF THE NORTHEAST QUARTER OF SECTION 35, A DISTANCE OF 270.47 FEET TO THE POINT OF BEGINNING;

CONTAINING A CALCULATED AREA OF 537.252 ACRES.

TOGETHER WITH THE FOLLOWING DESCRIBED PARCEL OF LAND:

PARCEL 2:

COMMENCING AT POINT "A" HEREIN DESCRIBED;

THENCE S77°19'50"E, A DISTANCE OF 99.91 FEET TO THE POINT OF BEGINNING;

THENCE S66°22'10"E, A DISTANCE OF 418.60 FEET;
THENCE S65°50'19"E, A DISTANCE OF 926.31 FEET TO A POINT OF CURVE;
THENCE ON THE ARC OF A CURVE TO THE RIGHT, HAVING A DELTA OF 93°42'48", A RADIUS OF 178.44 FEET AND A DISTANCE OF 291.86 FEET TO A POINT ON CURVE;
THENCE S47°50'38"E, A DISTANCE OF 125.93 FEET TO A POINT OF CURVE;
THENCE ON THE ARC OF A CURVE TO THE RIGHT, HAVING A DELTA OF 141°44'47", A RADIUS OF 74.72 FEET AND A DISTANCE OF 184.84 FEET TO A POINT OF TANGENT;
THENCE N85°14'20"W, A DISTANCE OF 773.82 FEET TO A POINT OF CURVE;
THENCE ON THE ARC OF A CURVE TO THE RIGHT, HAVING A DELTA OF 32°49'43", A RADIUS OF 180.00 FEET AND A DISTANCE OF 103.13 FEET TO A POINT OF TANGENT;
THENCE N52°20'15"W, A DISTANCE OF 614.62 FEET;
THENCE N47°07'47"W, A DISTANCE OF 236.98 FEET TO A POINT OF CURVE;
THENCE ON THE ARC OF A CURVE TO THE RIGHT, HAVING A DELTA OF 35°23'13", A RADIUS OF 222.71 FEET AND A DISTANCE OF 137.55 FEET TO A POINT ON CURVE;
THENCE S89°19'51"W, A DISTANCE OF 44.51 FEET;
THENCE ON THE ARC OF A CURVE TO THE RIGHT WHOSE RADIUS BEARS S78°39'56"E, HAVING A DELTA OF 54°25'41", RADIUS OF 270.00 FEET AND A DISTANCE OF 256.49 FEET TO A POINT OF TANGENT;
THENCE N65°45'45"E, A DISTANCE OF 144.64 FEET TO THE POINT OF BEGINNING;

CONTAINING A CALCULATED AREA OF 20.131 ACRES.

CONTAINING A TOTAL CALCULATED AREA OF 557.383 ACRES.

GENERAL NOTES:

1. THE DATE OF PREPARATION IS NOVEMBER 21, 2017.
2. INDIVIDUAL WELLS ARE THE RESPONSIBILITY OF EACH PROPERTY OWNER. PERMITS FOR INDIVIDUAL DOMESTIC WELLS MUST BE OBTAINED FROM THE STATE ENGINEER WHO BY LAW HAS THE AUTHORITY TO SET CONDITIONS FOR THE ISSUANCE OF THESE PERMITS.
3. SEWAGE TREATMENT IS THE RESPONSIBILITY OF EACH INDIVIDUAL PROPERTY OWNER. THE EL PASO COUNTY HEALTH DEPARTMENT MUST APPROVE EACH SYSTEM AND IN SOME CASES THE DEPARTMENT MAY REQUIRE AN ENGINEER DESIGNED SYSTEM PRIOR TO PERMIT APPROVAL.
4. ALL STRUCTURAL FOUNDATIONS SHALL BE DESIGNED BY A PROFESSIONAL ENGINEER, CURRENTLY LICENSED IN THE STATE OF COLORADO. SOILS REPORT BY ENTECH DATED FEBRUARY 22, 2016.

GENERAL NOTES (CONT.):

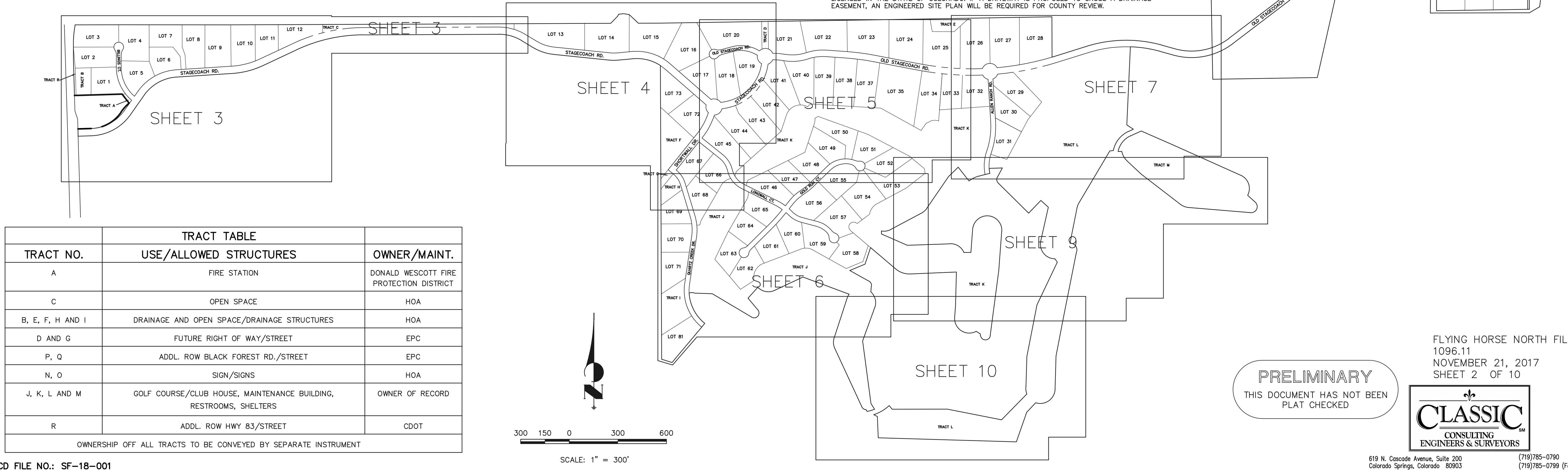
5. THE TRACT OF LAND HEREIN PLATTED LIES WITHIN SECTIONS 34, 35 AND 36, TOWNSHIP 11 SOUTH, RANGE 66 WEST OF THE SIXTH PRINCIPAL MERIDIAN, AND A PORTION OF SECTIONS 30 AND 31, TOWNSHIP 11 SOUTH, RANGE 65 WEST OF THE SIXTH PRINCIPAL MERIDIAN.
6. UNLESS SHOWN OTHERWISE, ALL FRONT LOT LINES ARE HEREBY PLATTED WITH A 5.00 FOOT WIDE PUBLIC UTILITIES, PUBLIC IMPROVEMENT AND DRAINAGE EASEMENT, AND A 10.00 FOOT WIDE PUBLIC UTILITY EASEMENT. ALL SIDE AND REAR LOT LINES ARE HEREBY PLATTED WITH A 10.00 FOOT WIDE PUBLIC UTILITY AND DRAINAGE EASEMENT, WITH THE SOLE RESPONSIBILITY FOR THE SURFACE MAINTENANCE OF EASEMENTS BEING VESTED WITH THE INDIVIDUAL PROPERTY OWNER.
7. THE FOLLOWING REPORTS HAVE BEEN SUBMITTED AND ARE ON FILE AT THE COUNTY PLANNING AND COMMUNITY DEVELOPMENT DEPARTMENT: SOILS AND GEOLOGICAL STUDY; WATER AVAILABILITY STUDY; DRAINAGE REPORTS; EROSION CONTROL REPORT; TRAFFIC IMPACT STUDY.
8. THE TOTAL NUMBER OF LOTS BEING PLATTED IS 80. THE TOTAL NUMBER OF TRACTS BEING PLATTED IS 18.
9. THE ARTICLES OF INCORPORATION FOR FLYING HORSE NORTH HOMEOWNER'S ASSOCIATION, INC., WERE FILED WITH THE COLORADO SECRETARY OF STATE UNDER IDENTIFICATION NUMBER 20171619083. THIS PLAT IS SUBJECT TO THE TERMS AND CONDITIONS AS SET FORTH IN THE RESTRICTIONS AND COVENANTS AS RECORDED AT RECEPTION NO. _____ OF THE RECORDS OF EL PASO COUNTY, COLORADO.
10. DEVELOPER SHALL COMPLY WITH FEDERAL AND STATE LAWS, REGULATIONS, ORDINANCES, REVIEW AND PERMIT REQUIREMENTS, AND OTHER AGENCY REQUIREMENTS, IF ANY, OF A APPLICABLE AGENCIES INCLUDING, BUT NOT LIMITED TO, THE COLORADO DEPARTMENT OF WILDLIFE, COLORADO DEPARTMENT OF TRANSPORTATION, U.S. ARMY CORP. OF ENGINEERS, THE U.S. FISH & WILDLIFE SERVICE AND/OR COLORADO DEPARTMENT OF WILDLIFE REGARDING THE ENDANGERED SPECIES ACT.
11. THE ADDRESSES EXHIBITED ON THIS PLAT ARE FOR INFORMATIONAL PURPOSES ONLY. THEY ARE NOT THE LEGAL DESCRIPTION AND ARE SUBJECT TO CHANGE.
12. PURCHASERS OF LOTS WITHIN THIS SUBDIVISION ARE HEREBY ALERTED THAT THESE LOTS CONTAIN STORM WATER CONVEYANCE PATHS. SAID PURCHASERS ACKNOWLEDGE ACCEPTANCE OF THESE FLOWS ONTO, AND THROUGH, THESE LOTS. THE PURCHASER OF THESE LOTS SHALL BE RESPONSIBLE FOR MAINTAINING THESE PATHS AND FOR PROVIDING MEASURES TO ELIMINATE EROSION, IF SUCH SHOULD OCCUR.
13. WATER IN THE DENVER BASIN AQUIFERS IS ALLOCATED ON A 100 YEAR AQUIFER LIFE: HOWEVER, FOR EL PASO COUNTY PLANNING PURPOSES, WATER IN THE DENVER BASIN AQUIFERS IS EVALUATED BASED ON A 300 YEAR AQUIFER LIFE. APPLICANTS AND ALL FUTURE OWNERS IN THE SUBDIVISION SHOULD BE AWARE THAT THE ECONOMIC LIFE OF A WATER SUPPLY BASED ON WELLS IN A GIVEN DENVER BASIN AQUIFER MAY BE LESS THAN EITHER THE 100 YEARS OR 300 YEARS INDICATED DUE TO ANTICIPATED WATER LEVEL DECLINES.
14. FLOODPLAIN STATEMENT:
THIS SITE, FLYING HORSE NORTH FILING NO. 1, IS NOT WITHIN A DESIGNATED F.E.M.A. FLOODPLAIN AS DETERMINED BY THE FLOOD INSURANCE RATE MAP, MAP NUMBER 08041C0295F AND 08041C0315F DATED MARCH 17, 1997.
15. NO LOT OR INTEREST THEREIN, SHALL BE SOLD, CONVEYED, OR TRANSFERRED WHETHER BY DEED OR BY CONTRACT, NOR SHALL BUILDING PERMITS BE ISSUED, UNTIL AND UNLESS EITHER THE REQUIRED PUBLIC AND COMMON DEVELOPMENT IMPROVEMENTS HAVE BEEN CONSTRUCTED AND COMPLETED AND PRELIMINARILY ACCEPTED IN ACCORDANCE WITH THE SUBDIVISION IMPROVEMENTS AGREEMENT BETWEEN THE APPLICANT/OWNER AND EL PASO COUNTY AS RECORDED UNDER RECEPTION NO. _____ IN THE OFFICE OF THE CLERK AND RECORDER OF EL PASO COUNTY, COLORADO OR, IN THE ALTERNATIVE, OTHER COLLATERAL IS PROVIDED TO MAKE PROVISION FOR THE COMPLETION OF SAID IMPROVEMENTS IN ACCORDANCE WITH THE EL PASO COUNTY LAND DEVELOPMENT CODE AND ENGINEERING CRITERIA MANUAL. ANY SUCH ALTERNATIVE COLLATERAL MUST BE APPROVED BY THE BOARD OF COUNTY COMMISSIONERS OR, IF PERMITTED BY THE SUBDIVISION IMPROVEMENTS AGREEMENT, BY THE DEVELOPMENT SERVICES DEPARTMENT DIRECTOR AND MEET THE POLICY AND PROCEDURE REQUIREMENTS OF EL PASO COUNTY PRIOR TO THE RELEASE BY THE COUNTY OF ANY LOTS FOR SALE, CONVEYANCE OR TRANSFER. THIS PLAT RESTRICTION MAY BE REMOVED OR RESCINDED BY THE BOARD OF COUNTY COMMISSIONERS OR, IF PERMITTED BY THE SUBDIVISION IMPROVEMENTS AGREEMENT, BY THE PLANNING AND COMMUNITY DEVELOPMENT DEPARTMENT DIRECTOR UPON EITHER APPROVAL OF AN ALTERNATIVE FORM OF COLLATERAL OR COMPLETION AND PRELIMINARY ACCEPTANCE BY THE EL PASO BOARD OF COUNTY COMMISSIONERS OF ALL IMPROVEMENTS REQUIRED TO BE CONSTRUCTED AND COMPLETED IN ACCORDANCE WITH SAID SUBDIVISION IMPROVEMENTS AGREEMENT. THE PARTIAL RELEASE OF LOTS FOR SALE, CONVEYANCE OR TRANSFER MAY ONLY BE GRANTED IN ACCORDANCE WITH ANY PLANNED PARTIAL RELEASE OF LOTS AUTHORIZED BY THE SUBDIVISION IMPROVEMENTS AGREEMENT.

GENERAL NOTES (CONT.):

16. DUE TO WILDFIRE CONCERNS, THE APPLICANTS AND SUBSEQUENT HOMEOWNERS ARE ENCOURAGED TO INCORPORATE WILDFIRE FUEL BREAKS PROVISIONS AS RECOMMENDED BY THE COLORADO STATE FOREST SERVICE AND ILLUSTRATED THROUGH PUBLICATIONS AVAILABLE THROUGH THE STATE FOREST SERVICE. A WILDFIRE MITIGATION REPORT WAS PREPARED FOR THIS SITE AND IS ON FILE WITH THE PLANNING AND COMMUNITY DEVELOPMENT DEPARTMENT.
17. THIS PLAT IS REGULATED BY A P.U.D. DEVELOPMENT PLAN AS RECORDED UNDER RECEPTION NO. 217032585.
18. MAILBOXES SHALL BE INSTALLED IN ACCORDANCE WITH ALL EL PASO COUNTY DEPARTMENT OF TRANSPORTATION AND UNITED STATES POSTAL SERVICE REGULATIONS.
19. FIRE PROTECTION IS BY DONALD WESCOTT FIRE PROTECTION DISTRICT AND BLACK FOREST FIRE PROTECTION DISTRICT.
20. THE FLYING HORSE NORTH HOMEOWNER'S ASSOCIATION SHALL MAINTAIN ALL IMPROVEMENTS LYING WITHIN MEDIANS, ISLANDS AND SIMILAR AREAS LYING WITHIN THE PLATTED RIGHT OF WAY, PER THE LANDSCAPE LICENSE AGREEMENT RECORDED UNDER RECEPTION NUMBER _____.
21. ANY PERSON WHO KNOWINGLY REMOVES, ALTERS OR DEFACES ANY PUBLIC LAND SURVEY MONUMENT OR LAND BOUNDARY MONUMENT OR ACCESSORY, COMMITS A CLASS TWO (2) MISDEMEANOR PURSUANT TO STATE STATUE 18-4-508, C.R.S.
22. THIS PLAT DOES NOT CONSTITUTE A TITLE SEARCH TO DETERMINE OWNERSHIP OR EASEMENTS OR RECORD. FOR ALL INFORMATION REGARDING EASEMENTS, RIGHT-OF-WAY AND TITLE OF RECORD, CLASSIC CONSULTING ENGINEERS AND SURVEYORS AND THE SURVEYOR OF RECORD RELIED UPON THE TITLE COMMITMENT ORDER NUMBER 171882-AMENDMENT NO. 1 ISSUED BY CAPSTONE TITLE DATED SEPTEMBER 6, 2017 AT 5:00 P.M.
23. PURSUANT TO RESOLUTION 16-454, APPROVED BY THE BOARD OF DIRECTORS, EL PASO COUNTY PUBLIC IMPROVEMENT DISTRICT AND RECORDED IN THE RECORDS OF THE EL PASO COUNTY CLERK AND RECORDER AT RECEPTION NUMBER 216145945, THE PARCELS WITHIN THE PLATTED BOUNDARIES OF FLYING HORSE NORTH FILING NO. 1 ARE INCLUDED WITHIN THE BOUNDARIES OF THE EL PASO COUNTY PUBLIC IMPROVEMENT DISTRICT NO. 3 AND AS SUCH IS SUBJECT TO APPLICABLE ROAD IMPACT FEES AND MILL LEVY.
24. A DRIVEWAY PERMIT IS REQUIRED TO BE APPLIED FOR AND APPROVED BY EL PASO COUNTY PLANNING AND COMMUNITY DEVELOPMENT DEPARTMENT PRIOR TO THE ESTABLISHMENT OF ANY DRIVEWAY.
25. THERE SHALL BE NO DIRECT LOT ACCESS TO STATE HIGHWAY 83 OR BLACK FOREST ROAD. ONLY LOTS 6 - 15, 73 AND TRACT C SHALL BE PERMITTED ACCESS OFF OF STAGECOACH ROAD, WITH LOTS 6 - 8 HAVING ACCESS ONLY ON THE SHARED PRIVATE ACCESS AND MAINTENANCE EASEMENT, RECORDED UNDER RECEPTION NUMBER _____. DRIVEWAY DESIGN MUST PROVIDE FOR TURNAROUND ON LOT TO PRECLUDE VEHICLES FROM BACKING ONTO STAGECOACH ROAD.
26. APPROVAL OF THIS PLAT HEREBY VACATES AND RELEASES ANY RIGHTS EL PASO COUNTY MAY HAVE ACQUIRED OR BE ENTITLED TO IN THE 30 FEET ON EACH OF THE SECTION LINES RECORDED IN ROAD BOOK A AT PAGE 78 AND BOOK 571 AT PAGE 55, AS THEY MAY AFFECT THIS PLAT.
27. LOT 36 HAS BEEN INTENTIONALLY OMITTED.
28. ONLY LOTS 1, 4-11, 13-15, 17-23, 29, 30, 34, 35, 39, 42, 44-46, 51, 53-56, 63, 64, 70-73 AND 77 SHALL BE ALLOWED BUILDING PERMITS UNTIL SUCH TIME AS (A) CDOT HAS APPROVED CONSTRUCTION PLANS FOR THE IMPROVEMENTS REQUIRED AT STAGECOACH DRIVE AND HIGHWAY 83 ASSOCIATED WITH THIS DEVELOPMENT AND (B) FINANCIAL ASSURANCES HAVE BEEN POSTED WITH CDOT AS REQUIRED. AT SUCH TIME AS (A) AND (B) HAVE BEEN SATISFIED ALL REMAINING LOTS ON THIS FINAL PLAT SHALL BE ALLOWED BUILDING PERMITS. NOTWITHSTANDING THE FOREGOING, NOT MORE THAN 40 DWELLING UNITS MAY BE OCCUPIED UNTIL SUCH TIME AS THE IMPROVEMENTS REQUIRED AT STAGECOACH DRIVE AND HIGHWAY 83 ASSOCIATED WITH THIS DEVELOPMENT HAVE BEEN COMPLETED.
29. ALL PROPERTY OWNERS ARE RESPONSIBLE FOR MAINTAINING PROPER STORM WATER DRAINAGE IN AND THROUGH THEIR PROPERTY. PUBLIC DRAINAGE EASEMENTS AS SPECIFICALLY NOTED ON THE PLAT SHALL BE MAINTAINED BY THE INDIVIDUAL LOT OWNERS UNLESS OTHERWISE INDICATED. STRUCTURES, FENCES, MATERIALS OR LANDSCAPING THAT COULD IMPEDE THE FLOW OF RUNOFF SHALL NOT BE PLACED IN DRAINAGE EASEMENTS.
30. INDIVIDUAL LOT PURCHASERS ARE RESPONSIBLE FOR CONSTRUCTING DRIVEWAYS, INCLUDING NECESSARY DRAINAGE CULVERTS PER LAND DEVELOPMENT CODE SECTION 6.3.3.C.2 AND 6.3.3.C.3. SOME LOTS WITHIN THIS SUBDIVISION WILL REQUIRE LARGER CULVERTS BASED ON THE APPROVED FINAL DRAINAGE REPORT AND SHALL BE SIZED AND DESIGNED BY A PROFESSIONAL ENGINEER LICENSED IN THE STATE OF COLORADO. IF A DRIVEWAY IS PROPOSED TO CROSS A DRAINAGE EASEMENT, AN ENGINEERED SITE PLAN WILL BE REQUIRED FOR COUNTY REVIEW.

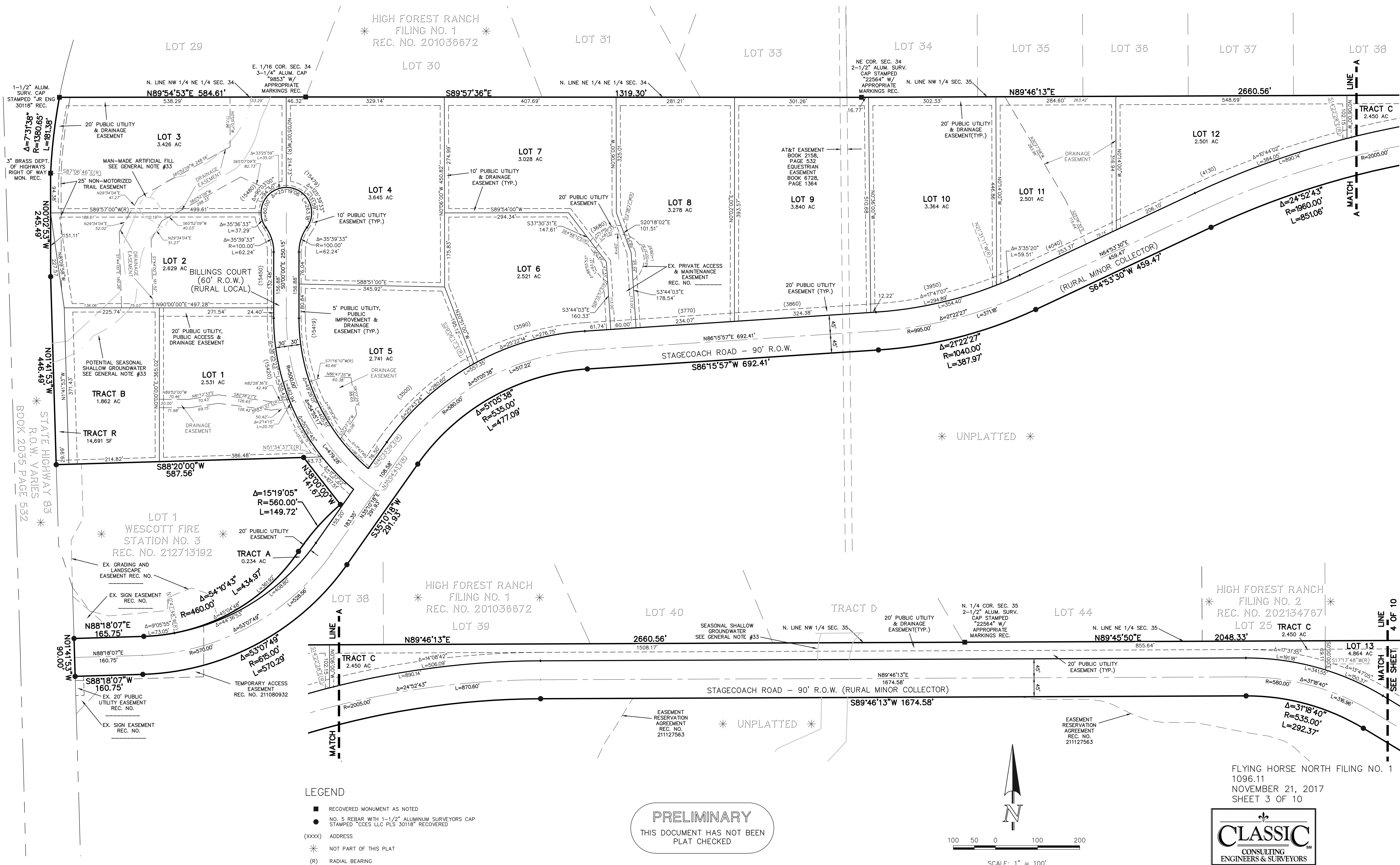
GENERAL NOTES (CONT.):

31. NO IMPROVEMENTS SHALL BE PLACED WITHIN THE HIGHWATER LINE OF THE RESERVOIR OR IN THE SPILLWAY OR SPILLWAY CHANNEL. IF DEVELOPMENT ACTIVITIES ASSOCIATED WITH THIS SUBDIVISION RESULT IN REQUIRED MODIFICATIONS, REPAIRS, ENLARGEMENTS TO, OR REPLACEMENT OF, ANY DAM, SPILLWAY, SPILLWAY CHANNEL, OR OTHER WATER DETENTION FACILITY LOCATED WITHIN, OR ASSOCIATED WITH, THIS DEVELOPMENT, DEVELOPER, FLYING HORSE COUNTRY CLUB LLC, ITS HEIRS, SUCCESSORS AND/OR ASSIGNS, AND/OR THE DAM OWNER SHALL BE RESPONSIBLE OR LIABLE FOR SUCH MODIFICATIONS, REPAIRS, ENLARGEMENTS, OR REPLACEMENT AND THE COSTS THEREOF. HOWEVER, EL PASO COUNTY SHALL NOT BE RESPONSIBLE OR LIABLE FOR SUCH MODIFICATIONS, REPAIRS, ENLARGEMENTS, OR REPLACEMENT AND THE COSTS THEREOF BY VIRTUE OF THIS SUBDIVISION APPROVAL. FURTHERMORE, THE DAM AND RESERVOIR ARE AN AMENITY FOR THIS SUBDIVISION. IF THE HAZARD CLASSIFICATION OF THE DAM LOCATED IN THIS SUBDIVISION CHANGES BECAUSE OF DEVELOPMENT ON PROPERTY ADJACENT AND DOWNSTREAM TO THIS SUBDIVISION RESULTING IN REQUIRED MODIFICATIONS, REPAIRS, ENLARGEMENTS TO, OR REPLACEMENT OF, ANY DAM, SPILLWAY, SPILLWAY CHANNEL, OR OTHER WATER DETENTION FACILITY BECAUSE OF SUCH INCREASE IN HAZARD CLASSIFICATION OF THE DAM, THEN THE DEVELOPER, FLYING HORSE COUNTRY CLUB LLC, ITS HEIRS, SUCCESSORS AND/OR ASSIGNS, AND/OR THE DAM OWNER, BUT NOT EL PASO COUNTY, SHALL BE RESPONSIBLE OR LIABLE FOR SUCH MODIFICATIONS, REPAIRS, ENLARGEMENTS, OR REPLACEMENT OR THE COSTS THEREOF BY VIRTUE OF THIS CHANGED HAZARD CLASSIFICATION.
32. LOTS 45 AND 67 WILL HAVE NO ACCESS TO SHORTWALL DRIVE.
33. LOTS THAT HAVE BEEN FOUND TO BE IMPACTED BY GEOLOGIC HAZARDS ARE GRAPHICALLY DEPICTED. MITIGATION MEASURES AND A MAP OF THE HAZARD AREA CAN BE FOUND IN THE GEOLOGIC HAZARD REPORT PREPARED BY ENTECH ENGINEERING DATED FEBRUARY 22, 2016 IN FLYING HORSE NORTH PRELIMINARY PLAN FILE # SP-17-012 AVAILABLE AT THE EL PASO COUNTY PLANNING AND COMMUNITY DEVELOPMENT DEPARTMENT. IF ANY STRUCTURES ARE PROPOSED IN ANY HAZARD AREA, AN ENGINEERED SITE PLAN WILL BE REQUIRED FOR COUNTY REVIEW.
34. FOR LOTS 41 AND 44, DRIVEWAY ACCESS OFF OF STAGECOACH ROAD IS ALLOWED ONLY IN THE LOCATIONS DEPICTED ON SHEET 5.
35. THE 40' FUTURE ROADWAY EASEMENT ON LOTS 76 AND 77 IS GRANTED TO EL PASO COUNTY. SAID EASEMENTS ARE GRANTED AS A RESERVATION FOR A PUBLIC ROAD, SHOULD THE PUBLIC ROAD BE DEEMED NECESSARY IN THE FUTURE BY THE COUNTY, AT NO COST TO THE COUNTY.
36. IF ANY PORTION OF A BUILDING IS PROPOSED TO ENCROACH INTO A DRAINAGE EASEMENT, AN ENGINEERED SITE PLAN WILL BE REQUIRED FOR COUNTY REVIEW, BUT NO REPLAT OF THE DRAINAGE EASEMENT WILL BE REQUIRED.

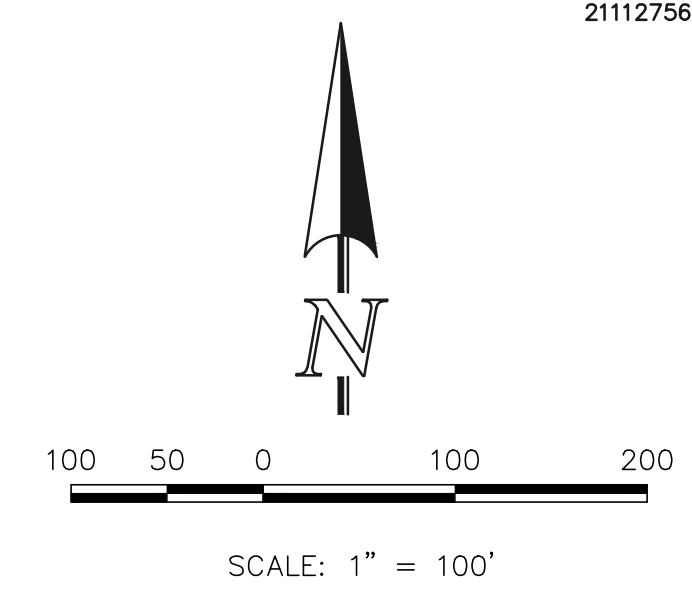


FLYING HORSE NORTH FILING NO. 1

A PORTION OF SECTIONS 34, 35 AND 36 TOWNSHIP 11 SOUTH, RANGE 66 WEST, AND A PORTION OF SECTIONS 30 AND 31, TOWNSHIP 11 SOUTH, RANGE 65 WEST OF THE SIXTH PRINCIPAL MERIDIAN, EL PASO COUNTY, COLORADO



PRELIMINARY
THIS DOCUMENT HAS NOT BEEN
PLAT CHECKED

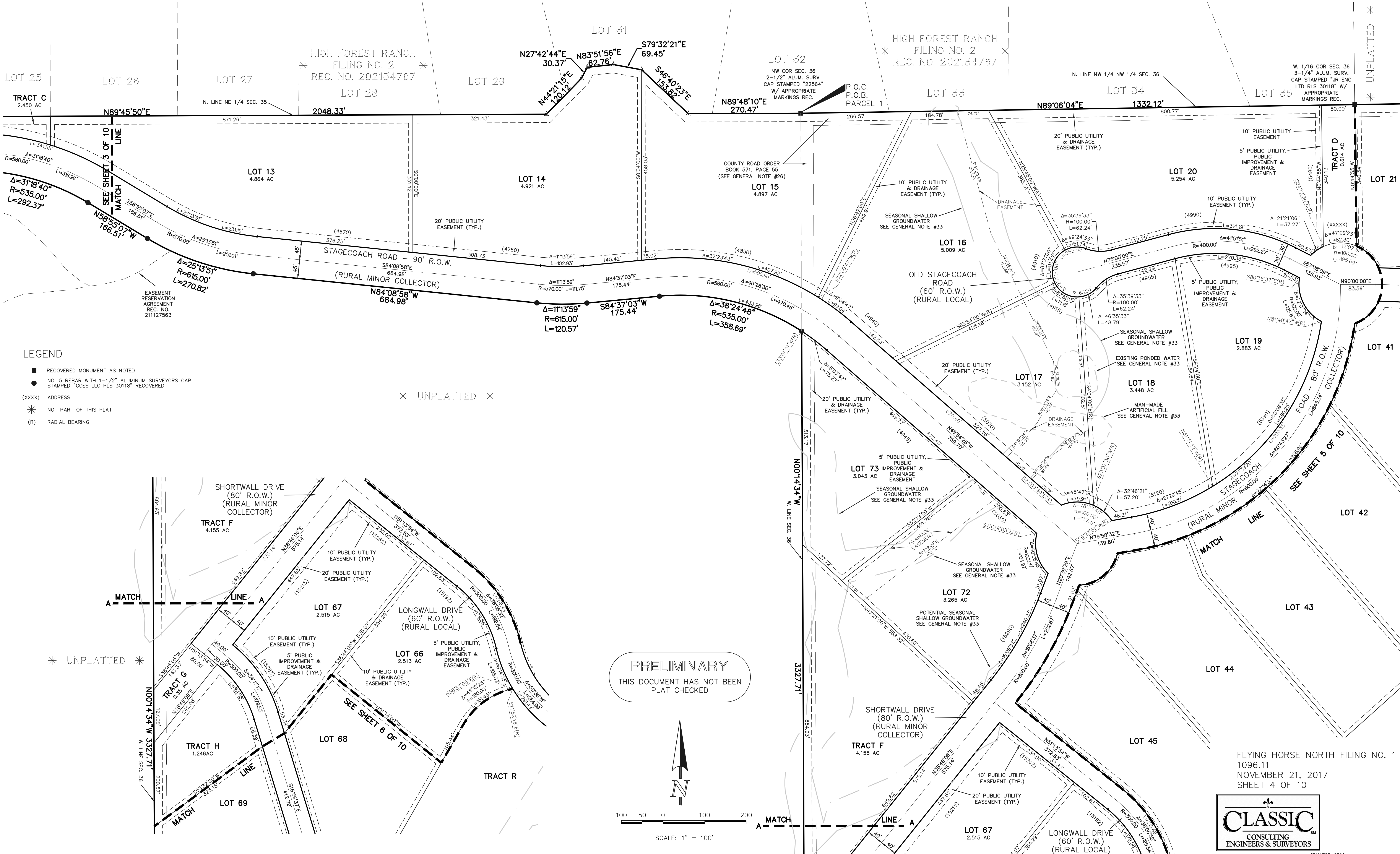


CLASSIC
CONSULTING
ENGINEERS & SURVEYORS

619 N. Cascade Avenue, Suite 200
Colorado Springs, Colorado 80903
(719) 785-0790
(719) 785-0799 (Fax)

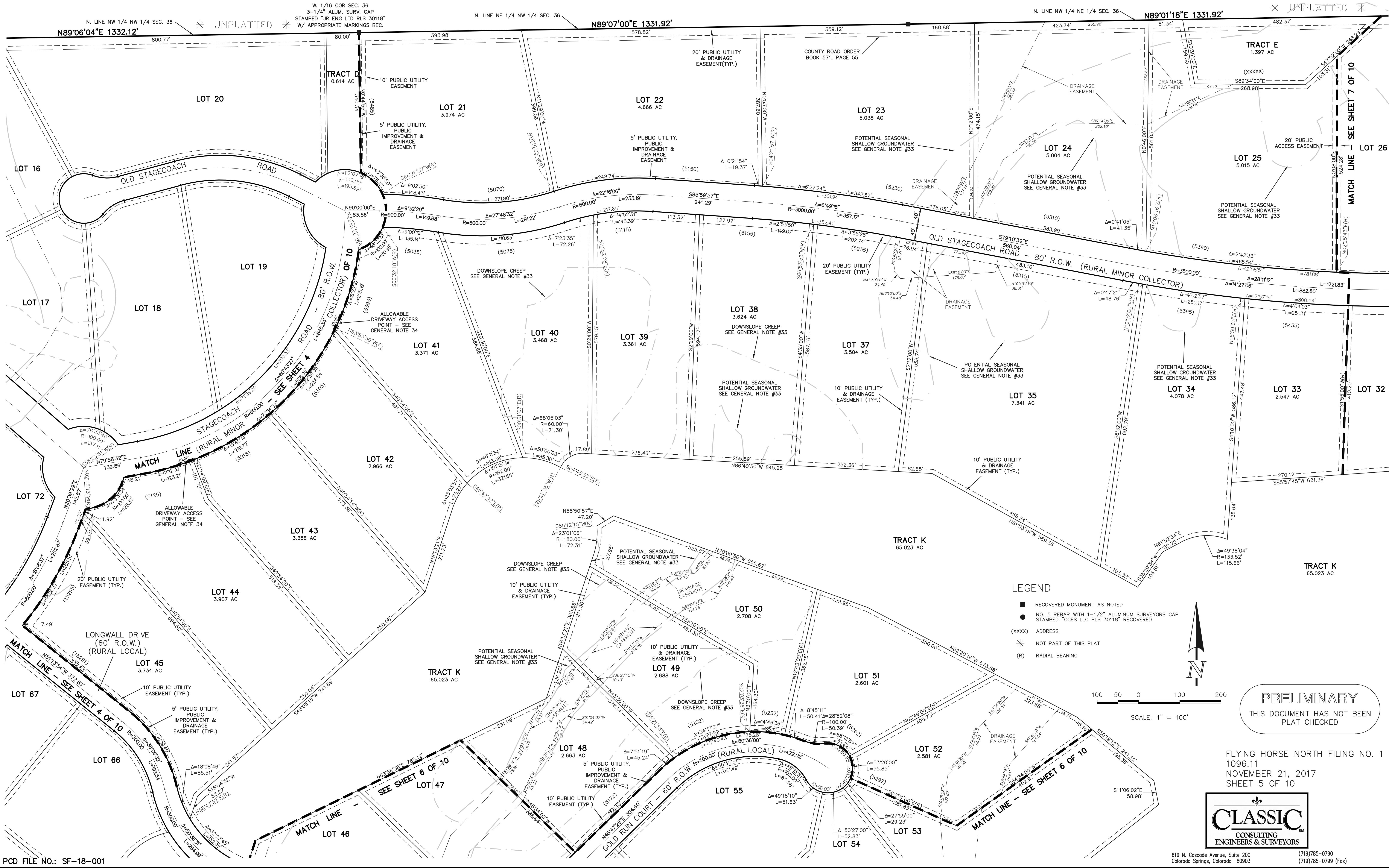
FLYING HORSE NORTH FILING NO. 1

A PORTION OF SECTIONS 34, 35 AND 36 TOWNSHIP 11 SOUTH, RANGE 66 WEST, AND A PORTION OF SECTIONS 30 AND 31, TOWNSHIP 11 SOUTH, RANGE 65 WEST OF THE SIXTH PRINCIPAL MERIDIAN, EL PASO COUNTY, COLORADO



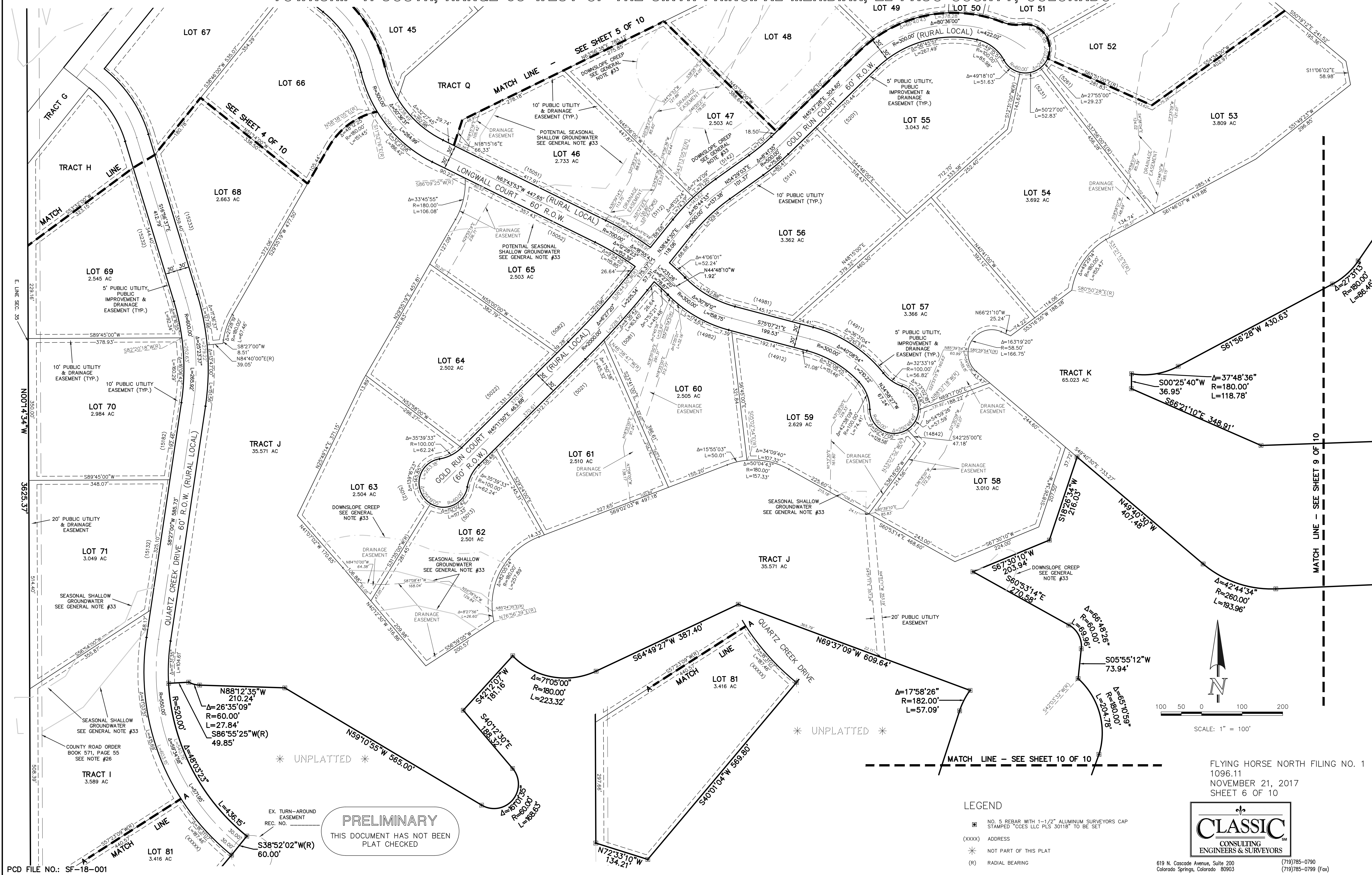
FLYING HORSE NORTH FILING NO. 1

A PORTION OF SECTIONS 34, 35 AND 36 TOWNSHIP 11 SOUTH, RANGE 66 WEST, AND A PORTION OF SECTIONS 30 AND 31, TOWNSHIP 11 SOUTH, RANGE 65 WEST OF THE SIXTH PRINCIPAL MERIDIAN, EL PASO COUNTY, COLORADO



FLYING HORSE NORTH FILING NO. 1

A PORTION OF SECTIONS 34, 35 AND 36 TOWNSHIP 11 SOUTH, RANGE 66 WEST, AND A PORTION OF SECTIONS 30 AND 31, TOWNSHIP 11 SOUTH, RANGE 65 WEST OF THE SIXTH PRINCIPAL MERIDIAN, EL PASO COUNTY, COLORADO



PCD FILE NO.: SF-18-001

PRELIMINARY
THIS DOCUMENT HAS NOT BEEN
PLAT CHECKED

LEGEND

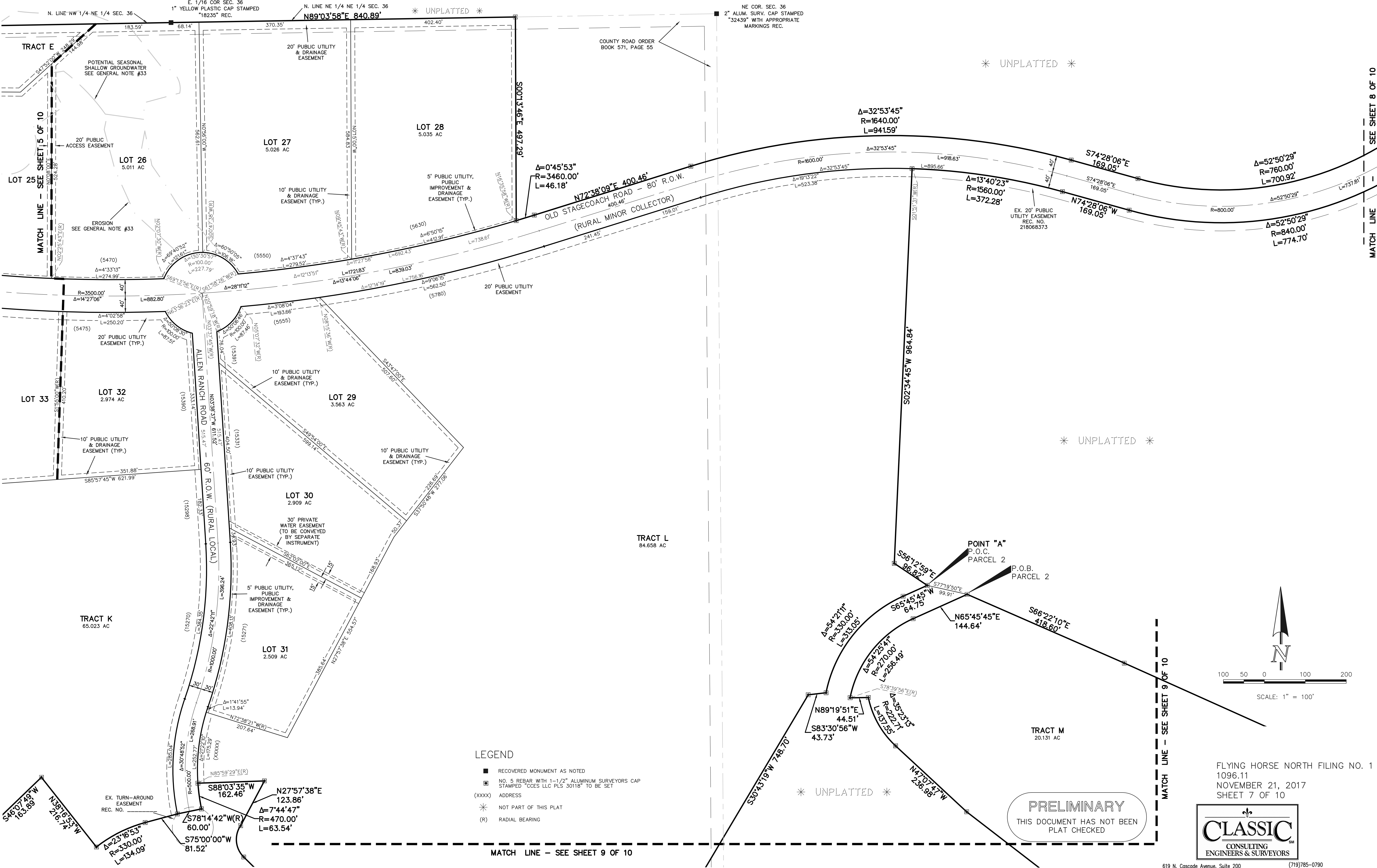
- NO. 5 REBAR WITH 1-1/2" ALUMINUM SURVEYORS CAP STAMPED "CGES LLC PLS 30118" TO BE SET
- (XXXX) ADDRESS
- NOT PART OF THIS PLAT
- (R) RADIAL BEARING

CLASSIC
CONSULTING
ENGINEERS & SURVEYORS

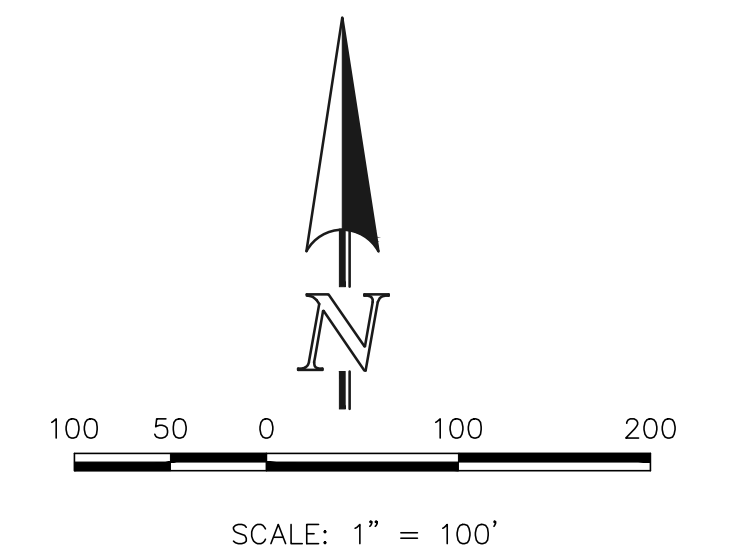
619 N. Cascade Avenue, Suite 200
Colorado Springs, Colorado 80903
(719) 785-0790
(719) 785-0799 (Fax)

FLYING HORSE NORTH FILING NO. 1

A PORTION OF SECTIONS 34, 35 AND 36 TOWNSHIP 11 SOUTH, RANGE 66 WEST, AND A PORTION OF SECTIONS 30 AND 31, TOWNSHIP 11 SOUTH, RANGE 65 WEST OF THE SIXTH PRINCIPAL MERIDIAN, EL PASO COUNTY, COLORADO



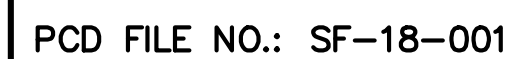
A PORTION OF SECTIONS 34, 35 AND 36 TOWNSHIP 11 SOUTH, RANGE 66 WEST, AND A PORTION OF SECTIONS 30 AND 31,
TOWNSHIP 11 SOUTH, RANGE 65 WEST OF THE SIXTH PRINCIPAL MERIDIAN, EL PASO COUNTY, COLORADO



The logo for Classic Consulting Engineers & Surveyors. It features the word "CLASSIC" in a large, serif font, with a fleur-de-lis symbol above it. Below "CLASSIC" are the words "CONSULTING ENGINEERS & SURVEYORS" in a smaller, sans-serif font. A small "SM" trademark symbol is to the right of "CLASSIC".

619 N. Cascade Avenue, Suite 200 (719)785-0790
Colorado Springs, Colorado 80903 (719)785-0799 (Fax)

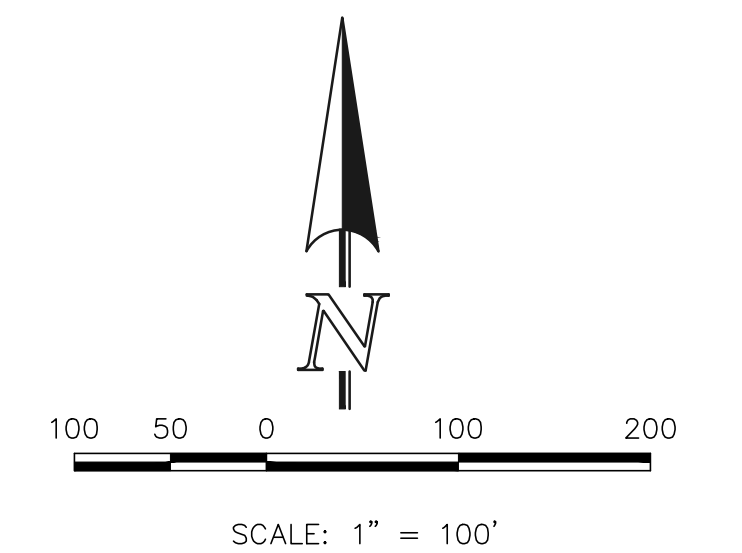
A PORTION OF SECTIONS 34, 35 AND 36 TOWNSHIP 11 SOUTH, RANGE 66 WEST, AND A PORTION OF SECTIONS 30 AND 31, TOWNSHIP 11 SOUTH, RANGE 65 WEST OF THE SIXTH PRINCIPAL MERIDIAN, EL PASO COUNTY, COLORADO



**CLASSICSM**
CONSULTING
ENGINEERS & SURVEYORS

(719)785-0790
(719)785-0799 (Fax)

A PORTION OF SECTIONS 34, 35 AND 36 TOWNSHIP 11 SOUTH, RANGE 66 WEST, AND A PORTION OF SECTIONS 30 AND 31,
TOWNSHIP 11 SOUTH, RANGE 65 WEST OF THE SIXTH PRINCIPAL MERIDIAN, EL PASO COUNTY, COLORADO



(XXXX) ADDRESS
* NOT PART OF THIS PLAT
(R) RADIAL BEARING

* EDMONDS SUBDIVISION
* PLAT BOOK H-3, PAGE 60 *

FLYING HORSE NORTH FILING NO. 1
1096.11
NOVEMBER 21, 2017
SHEET 10 OF 10

