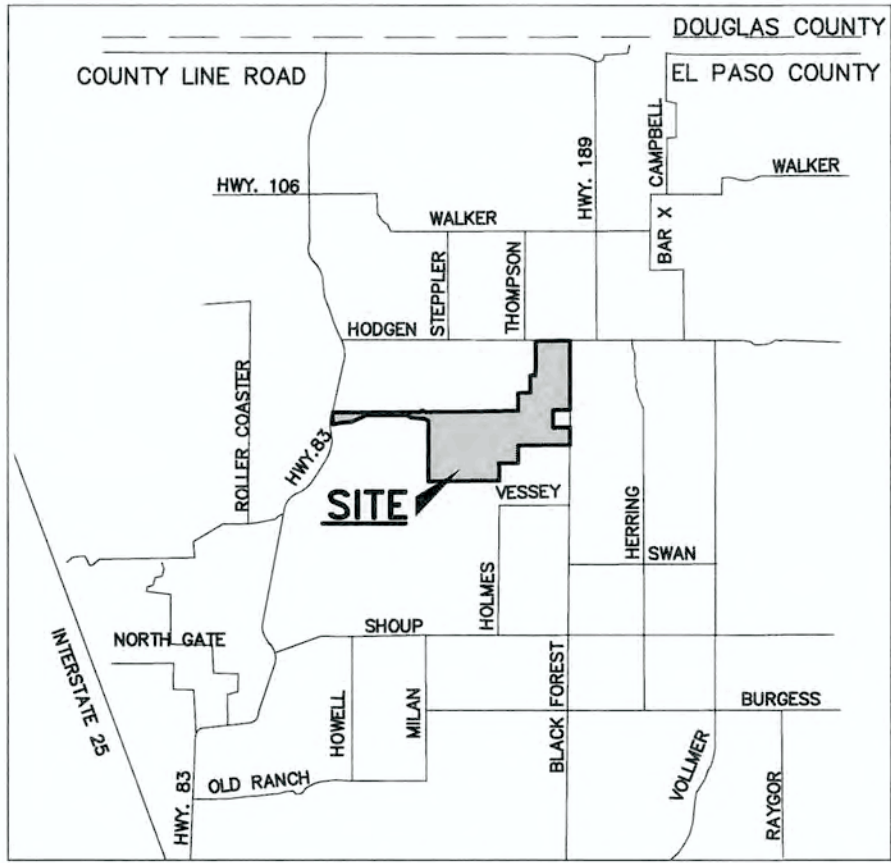


FLYING HORSE NORTH FILING NO. 1  
COUNTY OF EL PASO, STATE OF COLORADO  
GRADING AND EROSION CONTROL PLAN  
DECEMBER 2017

EL PASO COUNTY GRADING AND EROSION CONTROL NOTES:

- CONSTRUCTION MAY NOT COMMENCE UNTIL A CONSTRUCTION PERMIT IS OBTAINED FROM PLANING AND COMMUNITY DEVELOPMENT (PCD) AND A PRE-CONSTRUCTION CONFERENCE IS HELD WITH PCD - INSPECTIONS.
- STORMWATER DISCHARGES FROM CONSTRUCTION SITES SHALL NOT CAUSE OR THREATEN TO CAUSE POLLUTION, CONTAMINATION, OR DEGRADATION OF STATE WATERS. ALL WORK AND EARTH DISTURBANCE SHALL BE DONE IN A MANNER THAT MINIMIZES POLLUTION OF ANY ON-SITE OR OFF SITE WATERS, INCLUDING WETLANDS.
- NOTWITHSTANDING ANYTHING DEPICTED IN THESE PLANS IN WORDS OR GRAPHIC REPRESENTATION, ALL DESIGN AND CONSTRUCTION RELATED TO ROADS, STORM DRAINAGE AND EROSION CONTROL SHALL CONFORM TO THE STANDARDS AND REQUIREMENTS OF THE MOST RECENT VERSION OF THE RELEVANT ADOPTED EL PASO COUNTY STANDARDS, INCLUDING THE LAND DEVELOPMENT CODE, THE ENGINEERING CRITERIA MANUAL, THE DRAINAGE CRITERIA MANUAL, AND THE DRAINAGE CRITERIA MANUAL VOLUME 2. ANY DEVIATIONS TO REGULATIONS AND STANDARDS MUST BE REQUESTED, AND APPROVED, IN WRITING.
- A SEPARATE STORMWATER MANAGEMENT PLAN (SWMP) FOR THIS PROJECT SHALL BE COMPLETED AND AN EROSION AND STORMWATER QUALITY CONTROL PERMIT (ESQP) ISSUED PRIOR TO COMMENCING CONSTRUCTION. DURING CONSTRUCTION THE SWMP IS THE RESPONSIBILITY OF THE DESIGNATED STORMWATER MANAGER, SHALL BE LOCATED ON SITE AT ALL TIMES AND SHALL BE KEPT UP TO DATE WITH WORK PROGRESS AND CHANGES IN THE FIELD.
- ONCE THE ESQP HAS BEEN ISSUED, THE CONTRACTOR MAY INSTALL THE INITIAL STAGE EROSION AND SEDIMENT CONTROL BMPs AS INDICATED ON THE GEC. A PRE-CONSTRUCTION MEETING BETWEEN THE CONTRACTOR, ENGINEER, AND EL PASO COUNTY WILL BE HELD PRIOR TO ANY CONSTRUCTION. IT IS THE RESPONSIBILITY OF THE APPLICANT TO COORDINATE THE MEETING TIME AND PLACE WITH COUNTY PCD INSPECTIONS STAFF.
- SOIL EROSION CONTROL MEASURES FOR ALL SLOPES, CHANNELS, DITCHES, OR ANY DISTURBED LAND AREA SHALL BE COMPLETED WITHIN 21 CALENDAR DAYS AFTER FINAL GRADING, OR FINAL EARTH DISTURBANCE, HAS BEEN COMPLETED. DISTURBED AREAS AND STOCKPILES WHICH ARE NOT AT FINAL GRADE BUT WILL REMAIN DORMANT FOR LONGER THAN 30 DAYS SHALL ALSO BE MULCHED WITHIN 21 DAYS AFTER INTERIM GRADING. AN AREA THAT IS GOING TO REMAIN IN AN INTERIM STATE FOR MORE THAN 60 DAYS SHALL ALSO BE SEEDED. ALL TEMPORARY SOIL EROSION CONTROL MEASURES AND BMPs SHALL BE MAINTAINED UNTIL PERMANENT SOIL EROSION CONTROL MEASURES ARE IMPLEMENTED AND ESTABLISHED.
- TEMPORARY SOIL EROSION CONTROL FACILITIES SHALL BE REMOVED AND EARTH DISTURBANCE AREAS GRADED AND STABILIZED WITH PERMANENT SOIL EROSION CONTROL MEASURES PURSUANT TO STANDARDS AND SPECIFICATION PRESCRIBED IN THE DCM VOLUME II AND THE ENGINEERING CRITERIA MANUAL (ECM) APPENDIX I.
- ALL PERSONS ENGAGED IN EARTH DISTURBANCE SHALL IMPLEMENT AND MAINTAIN ACCEPTABLE SOIL EROSION AND SEDIMENT CONTROL MEASURES INCLUDING BMPs IN CONFORMANCE WITH THE EROSION CONTROL TECHNICAL STANDARDS OF THE DRAINAGE CRITERIA MANUAL (DCM) VOLUME II AND IN ACCORDANCE WITH THE STORMWATER MANAGEMENT PLAN (SWMP).
- ALL TEMPORARY EROSION CONTROL FACILITIES INCLUDING BMPs AND ALL PERMANENT FACILITIES INTENDED TO CONTROL EROSION OF ANY EARTH DISTURBANCE OPERATIONS, SHALL BE INSTALLED AS DEFINED IN THE APPROVED PLANS, THE SWMP AND THE DCM VOLUME II AND MAINTAINED THROUGHOUT THE DURATION OF THE EARTH DISTURBANCE OPERATION.
- ANY EARTH DISTURBANCE SHALL BE CONDUCTED IN SUCH A MANNER SO AS TO EFFECTIVELY REDUCE ACCELERATED SOIL EROSION AND RESULTING SEDIMENTATION. ALL DISTURBANCES SHALL BE DESIGNED, CONSTRUCTED, AND COMPLETED SO THAT THE EXPOSED AREA OF ANY DISTURBED LAND SHALL BE LIMITED TO THE SHORTEST PRACTICAL PERIOD OF TIME.
- ANY TEMPORARY OR PERMANENT FACILITY DESIGNED AND CONSTRUCTED FOR THE CONVEYANCE OF STORMWATER AROUND, THROUGH, OR FROM THE EARTH DISTURBANCE AREA SHALL BE DESIGNED TO LIMIT THE DISCHARGE TO A NON-EROSIVE VELOCITY.
- CONCRETE WASH WATER SHALL BE CONTAINED AND DISPOSED OF IN ACCORDANCE WITH THE SWMP. NO WASH WATER SHALL BE DISCHARGED TO OR ALLOWED TO RUNOFF TO STATE WATERS, INCLUDING ANY SURFACE OR SUBSURFACE STORM DRAINAGE SYSTEM OR FACILITIES.
- EROSION CONTROL BLANKETING IS TO BE USED ON SLOPES STEEPER THAN 3:1.
- BUILDING, CONSTRUCTION, EXCAVATION, OR OTHER WASTE MATERIALS SHALL NOT BE TEMPORARILY PLACED OR STORED IN THE STREET, ALLEY, OR OTHER PUBLIC WAY, UNLESS IN ACCORDANCE WITH AN APPROVED TRAFFIC CONTROL PLAN. BMP'S MAY BE REQUIRED BY EL PASO COUNTY ENGINEERING IF DEEMED NECESSARY, BASED ON SPECIFIC CONDITIONS AND CIRCUMSTANCES.
- VEHICLE TRACKING OF SOILS AND CONSTRUCTION DEBRIS OFF-SITE SHALL BE MINIMIZED. MATERIALS TRACKED OFFSITE SHALL BE CLEANED UP AND PROPERLY DISPOSED OF IMMEDIATELY.
- CONTRACTOR SHALL BE RESPONSIBLE FOR THE REMOVAL OF ALL WASTES FROM THE CONSTRUCTION SITE FOR DISPOSAL IN ACCORDANCE WITH LOCAL AND STATE REGULATORY REQUIREMENTS. NO CONSTRUCTION DEBRIS, TREE SLASH, BUILDING MATERIAL WASTES OR UNUSED BUILDING MATERIALS SHALL BE BURIED, DUMPED, OR DISCHARGED AT THE SITE.
- THE OWNER, SITE DEVELOPER, CONTRACTOR, AND/OR THEIR AUTHORIZED AGENTS SHALL BE RESPONSIBLE FOR THE REMOVAL OF ALL CONSTRUCTION DEBRIS, DIRT, TRASH, ROCK, SEDIMENT, AND SAND THAT MAY ACCUMULATE IN THE STORM SEWER OR OTHER DRAINAGE CONVEYANCE SYSTEM AND STORMWATER APPURTENANCES AS A RESULT OF SITE DEVELOPMENT.
- THE QUANTITY OF MATERIALS STORED ON THE PROJECT SITE SHALL BE LIMITED, AS MUCH AS PRACTICAL, TO THAT QUANTITY REQUIRED TO PERFORM THE WORK IN AN ORDERLY SEQUENCE. ALL MATERIALS STORED ON-SITE SHALL BE STORED IN A NEAT, ORDERLY MANNER, IN THEIR ORIGINAL CONTAINERS, WITH ORIGINAL MANUFACTURER'S LABELS.
- NO CHEMICALS ARE TO BE USED BY THE CONTRACTOR, WHICH HAVE THE POTENTIAL TO BE RELEASED IN STORMWATER UNLESS PERMISSION FOR THE USE OF A SPECIFIC CHEMICAL IS GRANTED IN WRITING BY THE ECM ADMINISTRATOR. IN GRANTING THE USE OF SUCH CHEMICALS, SPECIAL CONDITIONS AND MONITORING MAY BE REQUIRED.
- BULK STORAGE STRUCTURES FOR PETROLEUM PRODUCTS AND OTHER CHEMICALS SHALL HAVE ADEQUATE PROTECTION SO AS TO CONTAIN ALL SPILLS AND PREVENT ANY SPILLED MATERIAL FROM ENTERING STATE WATERS, INCLUDING ANY SURFACE OR SUBSURFACE STORM DRAINAGE SYSTEM OR FACILITIES.
- NO PERSON SHALL CAUSE THE IMPEDIMENT OF STORMWATER FLOW IN THE FLOW LINE OF THE CURB AND GUTTER OR IN THE DITCHLINE.
- INDIVIDUALS SHALL COMPLY WITH THE "COLORADO WATER QUALITY CONTROL ACT" (TITLE 25, ARTICLE 8, CRS), AND THE "CLEAN WATER ACT" (33 USC 1344), IN ADDITION TO THE REQUIREMENTS INCLUDED IN THE DCM VOLUME II AND THE ECM APPENDIX I. ALL APPROPRIATE PERMITS MUST BE OBTAINED BY THE CONTRACTOR PRIOR TO CONSTRUCTION (NPDES, FLOODPLAIN, 404, FUGITIVE DUST, ETC.). IN THE EVENT OF CONFLICTS BETWEEN THESE REQUIREMENTS AND LAWS, RULES, OR REGULATIONS OF OTHER FEDERAL, STATE, OR COUNTY AGENCIES, THE MORE RESTRICTIVE LAWS, RULES, OR REGULATIONS SHALL APPLY.
- ALL CONSTRUCTION TRAFFIC MUST ENTER/EXIT THE SITE AT APPROVED CONSTRUCTION ACCESS POINTS.
- PRIOR TO ACTUAL CONSTRUCTION THE PERMITEE SHALL VERIFY THE LOCATION OF EXISTING UTILITIES.
- A WATER SOURCE SHALL BE AVAILABLE ON SITE DURING EARTHWORK OPERATIONS AND UTILIZED AS REQUIRED TO MINIMIZE DUST FROM EARTHWORK EQUIPMENT AND WIND.
- THE SOILS REPORT FOR THIS SITE HAS BEEN PREPARED BY ENTECH ENGINEERING, INC., TITLED "SOILS, GEOLOGY, GEOLOGIC HAZARD AND WASTEWATER STUDY, FLYING HORSE NORTH PUD SUBMITTAL", DATED FEBRUARY 22, 2016, AND SHALL BE CONSIDERED A PART OF THESE PLANS.
- AT LEAST TEN DAYS PRIOR TO THE ANTICIPATED START OF CONSTRUCTION, FOR PROJECTS THAT WILL DISTURB 1 ACRE OR MORE, THE OWNER OR OPERATOR OF CONSTRUCTION ACTIVITY SHALL SUBMIT A PERMIT APPLICATION FOR STORMWATER DISCHARGE TO THE COLORADO DEPARTMENT OF PUBLIC HEALTH AND ENVIRONMENT, WATER QUALITY DIVISION. THE APPLICATION CONTAINS CERTIFICATION OF COMPLETION OF A STORMWATER MANAGEMENT PLAN (SWMP), OF WHICH THIS GRADING AND EROSION CONTROL PLAN MAY BE A PART. FOR INFORMATION OR APPLICATION MATERIALS CONTACT:

COLORADO DEPARTMENT OF PUBLIC HEALTH AND ENVIRONMENT  
WATER QUALITY CONTROL DIVISION  
WOOD - PERMITS  
4300 CHERRY CREEK DRIVE SOUTH  
DENVER, CO 80246-1530  
ATTN: PERMITS UNIT



VICINITY MAP  
N.T.S.

SHEET INDEX

TITLE SHEET  
SHEET 1 OF 10

INDEX SHEET  
SHEET 2 OF 10

OVERLOT GRADING PLAN INCLUDING EROSION CONTROL  
SHEET 3 OF 10 - SHEET 9 OF 10

GRADING AND EROSION CONTROL DETAILS  
SHEET 10 OF 10

APPROVALS:

DESIGN ENGINEER'S STATEMENT:

THIS GRADING AND EROSION CONTROL PLAN WAS PREPARED UNDER MY DIRECTION AND SUPERVISION AND IS CORRECT TO THE BEST OF MY KNOWLEDGE AND BELIEF. SAID PLAN HAS BEEN PREPARED ACCORDING TO THE CRITERIA ESTABLISHED BY THE COUNTY FOR GRADING AND EROSION CONTROL PLANS. I ACCEPT RESPONSIBILITY FOR ANY LIABILITY CAUSED BY ANY NEGLIGENT ACTS, ERRORS, OR OMISSIONS ON MY PART IN PREPARING THIS PLAN.

MARC A. WHORTON, COLORADO P.E. #37155  
FOR AND ON THE BEHALF OF CLASSIC CONSULTING ENGINEERS & SURVEYORS

OWNER/DEVELOPER STATEMENT:

I, THE OWNER/DEVELOPER HAVE READ AND WILL COMPLY WITH THE REQUIREMENTS OF THE GRADING AND EROSION CONTROL PLAN.

DREW BALSICK, VICE PRESIDENT  
PRI #2 LLC C/O ELITE PROPERTIES OF AMERICA

EL PASO COUNTY:

COUNTY PLAN REVIEW IS PROVIDED ONLY FOR GENERAL CONFORMANCE WITH COUNTY DESIGN CRITERIA. THE COUNTY IS NOT RESPONSIBLE FOR THE ACCURACY AND ADEQUACY OF THE DESIGN, DIMENSIONS, AND/OR ELEVATIONS WHICH SHALL BE CONFIRMED AT THE JOB SITE. THE COUNTY THROUGH THE APPROVAL OF THIS DOCUMENT ASSUMES NO RESPONSIBILITY FOR COMPLETENESS AND/OR ACCURACY OF THIS DOCUMENT.

FILED IN ACCORDANCE WITH THE REQUIREMENTS OF THE EL PASO COUNTY LAND DEVELOPMENT CODE, DRAINAGE CRITERIA MANUAL, VOLUMES 1 AND 2, AND ENGINEERING CRITERIA MANUAL AS AMENDED.

IN ACCORDANCE WITH ECM SECTION 1.12, THESE CONSTRUCTION DOCUMENTS WILL BE VALID FOR CONSTRUCTION FOR A PERIOD OF TWO YEARS FROM THE DATE SIGNED BY THE EL PASO COUNTY ENGINEER. IF CONSTRUCTION HAS NOT STARTED WITHIN THOSE TWO YEARS, THE PLANS WILL NEED TO BE RESUBMITTED FOR APPROVAL, INCLUDING PAYMENT OF REVIEW FEES AT THE PLANNING AND COMMUNITY DEVELOPMENT DIRECTORS DISCRETION.

Approved  
by Elizabeth Nijkamp  
El Paso County Planning and Community Development  
on behalf of Jennifer Irvine, County Engineer, ECM Administrator  
JENNIFER IRVINE, P.E.  
COUNTY ENGINEER / ECM ADMINISTRATOR  
DATE  
09/25/2018 2:43:11 PM

PCD FILE NO. SF-18-001

48 HOURS BEFORE YOU DIG,  
CALL UTILITY LOCATORS  
811

UTILITY NOTIFICATION CENTER OF COLORADO  
IT'S THE LAW

THE LOCATIONS OF EXISTING UNDERGROUND UTILITIES ARE SHOWN IN AN APPROXIMATE WAY ONLY. THE CONTRACTOR SHALL DETERMINE THE EXACT LOCATION OF ALL EXISTING UTILITIES BEFORE COMMENCING WORK. THE CONTRACTOR SHALL BE FULLY RESPONSIBLE FOR ANY AND ALL DAMAGES WHICH MIGHT BE CAUSED BY HIS FAILURE TO EXACTLY LOCATE AND PRESERVE ANY AND ALL UNDERGROUND UTILITIES.

NO.	REVISION	DATE
1	REVISED PER COUNTY COMMENTS	7-29-16
2	UPDATE GRADING PLAN BASED ON FILING 1 DESIGN	12-12-17
3	REVISED PER COUNTY COMMENTS	3-16-18
4	REVISED PER COUNTY COMMENTS	6-7-18

REVIEW:  
PREPARED UNDER MY DIRECT SUPERVISION FOR AND ON BEHALF OF  
CLASSIC CONSULTING ENGINEERS AND SURVEYORS, LLC

MARC A. WHORTON, COLORADO P.E. #37155  
DATE  
6/14/18

CLASSIC  
CONSULTING  
ENGINEERS & SURVEYORS

619 N. Cascade Avenue, Suite 200  
Colorado Springs, Colorado 80903  
(719)785-0790  
(719)785-0799(Fax)

FLYING HORSE NORTH FILING NO. 1  
GRADING AND EROSION CONTROL PLAN

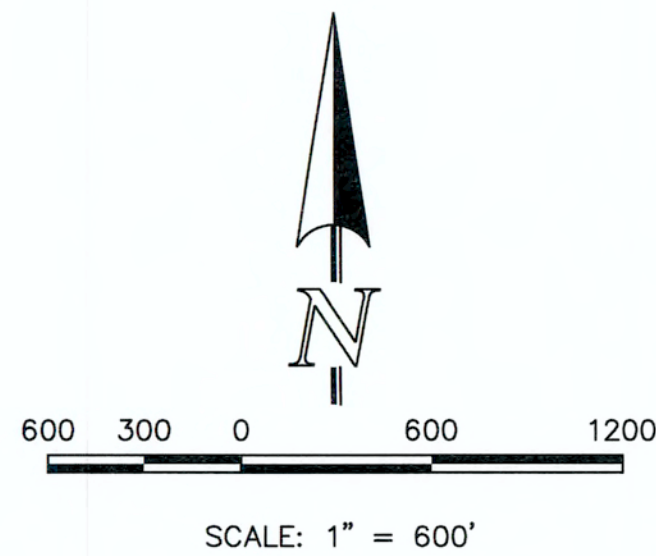
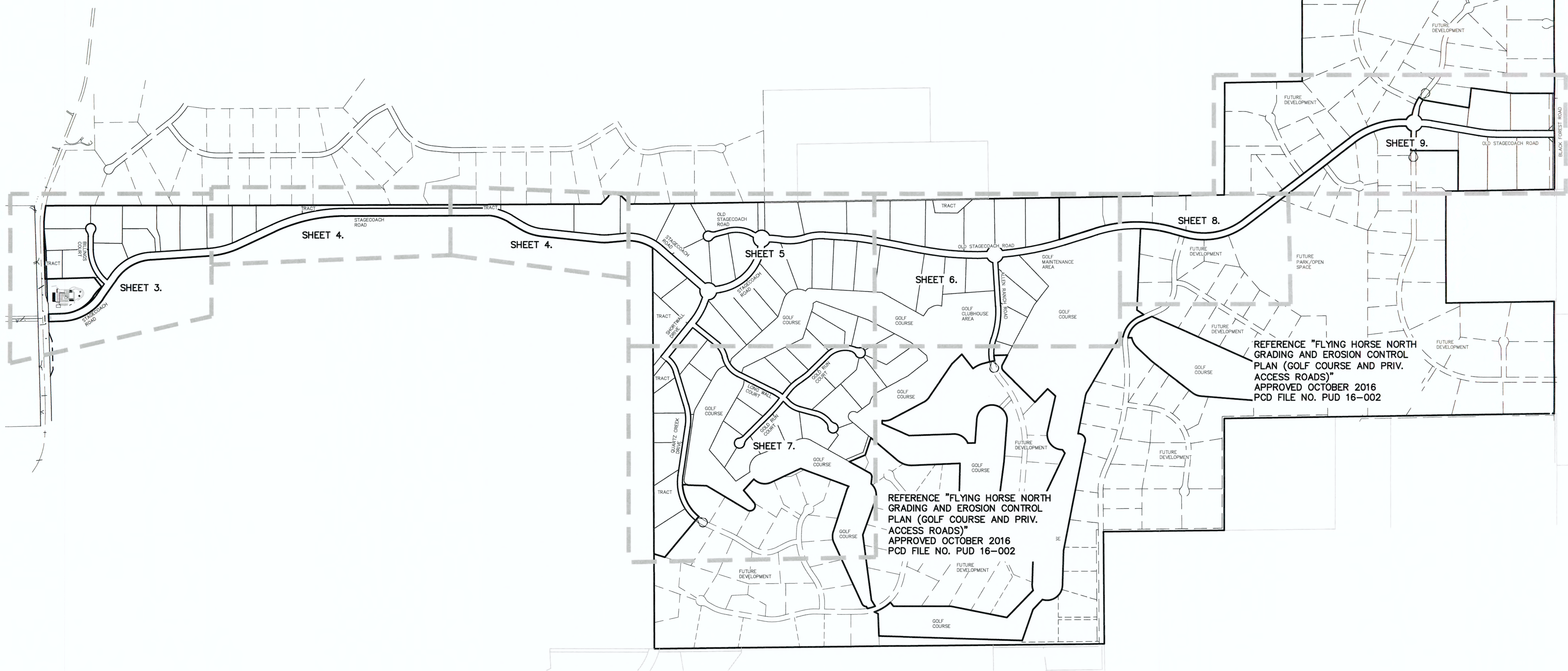
TITLE SHEET

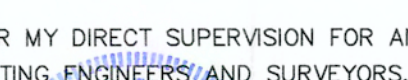


DESIGNED BY	MAW	SCALE	DATE	12-12-17
DRAWN BY	RTT	(H) 1"= N/A	SHEET	1 OF 10
CHECKED BY		(V) 1"= N/A	JOB NO.	1096.11

CLASSIC  
ENGINEERS & SURVEYORS

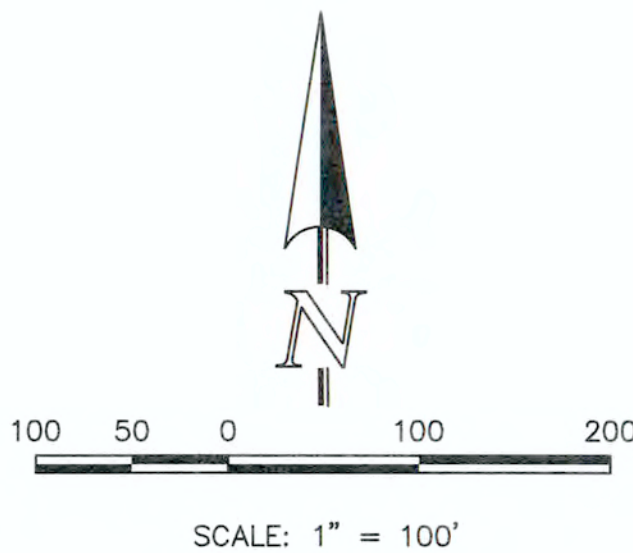
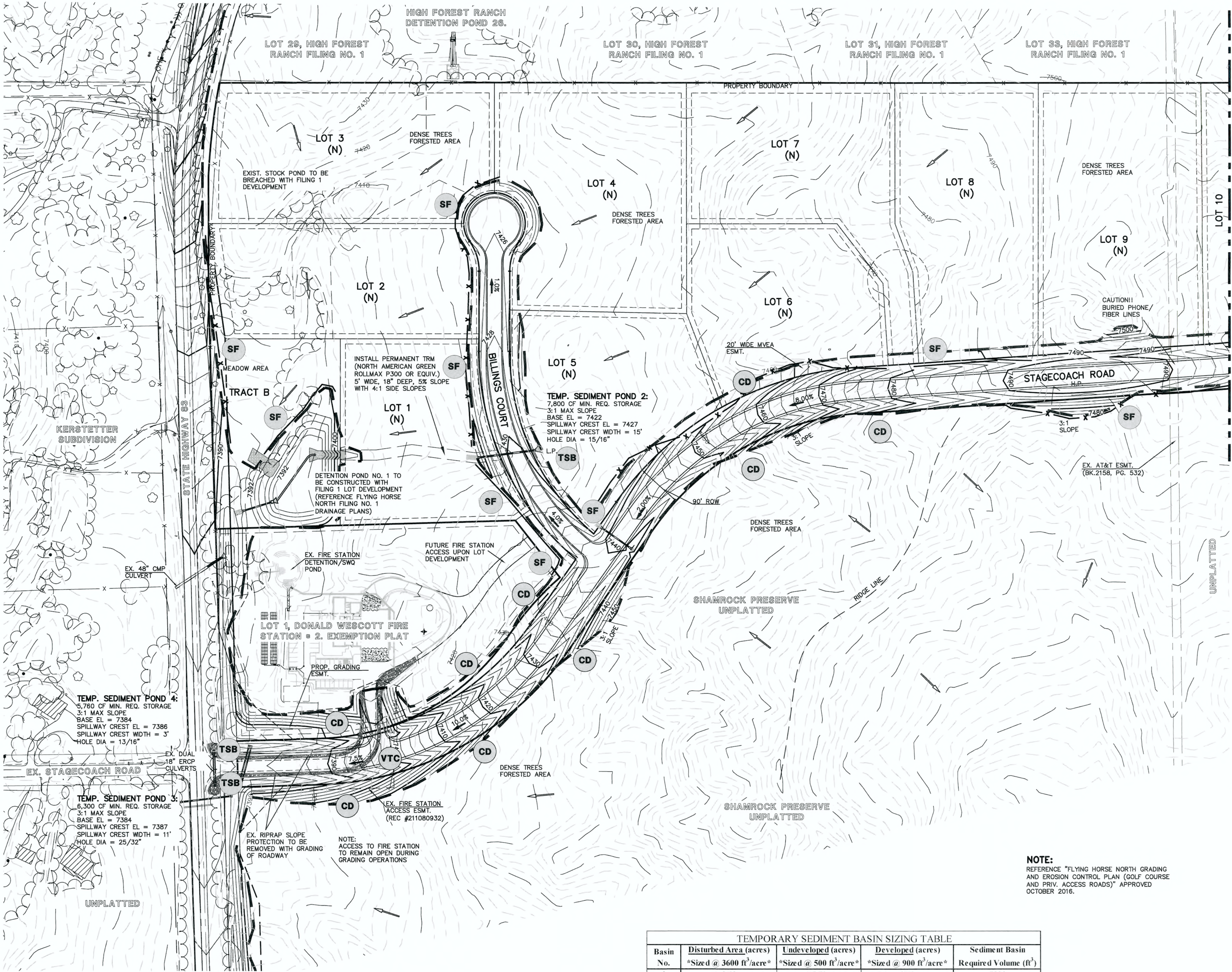


N:\09611\DRAWINGS\CONSTRUCTION\Final Grading Plan\09611- GRADING 02.dwg, 3/28/2018 10:28:39 AM, 1:1



<p>48 HOURS BEFORE YOU DIG, CALL UTILITY LOCATORS</p> <p><b>811</b></p> <p>UTILITY NOTIFICATION CENTER OF COLORADO IT'S THE LAW</p> <p>THE LOCATIONS OF EXISTING UNDERGROUND UTILITIES ARE SHOWN IN AN APPROXIMATE WAY ONLY. THE CONTRACTOR SHALL DETERMINE THE EXACT LOCATION OF ALL EXISTING UTILITIES BEFORE COMMENCING WORK. THE CONTRACTOR SHALL BE FULLY RESPONSIBLE FOR ANY AND ALL DAMAGES WHICH MIGHT BE CAUSED BY HIS FAILURE TO EXACTLY LOCATE AND PRESERVE ANY AND ALL UNDERGROUND UTILITIES.</p>	NO. REVISION		DATE	REVIEW:	<div><p>MARC A. WHORTON, COLORADO, P.E. #37155</p></div> <p>6/11/18</p> <p>DATE</p>	<div><p><b>CLASSIC</b> CONSULTING ENGINEERS &amp; SURVEYORS</p></div> <p>619 N. Cascade Avenue, Suite 200 (719)785-0790 Colorado Springs, Colorado 80903 (719)785-0799(fax)</p>	FLYING HORSE NORTH FILING NO. 1 GRADING AND EROSION CONTROL PLAN			<div><p><b>CLASSIC</b> CONSULTING ENGINEERS &amp; SURVEYORS</p></div>
	1	REVISED PER COUNTY COMMENTS	7-29-16	PREPARED UNDER MY DIRECT SUPERVISION FOR AND ON BEHALF OF CLASSIC CONSULTING ENGINEERS AND SURVEYORS, LLC			INDEX MAP			
	2	REVISED PER STAGECOACH ROW AND MILAM CHANGE	3-26-17							
	3	UPDATE GRADING PLAN PER FILING 1 DESIGN	12-12-17							
	4	REVISED PER COUNTY COMMENTS	3-16-18							
						EPC 9/25/18				
						DESIGNED BY	MAW	SCALE	DATE	12/12/17
						DRAWN BY	MAW	(H) 1"= 600'	SHEET 2 OF 10	
						CHECKED BY		(V) 1"= N/A	JOB NO. 1096.11	





NOTES:

- AT LEAST TEN DAYS PRIOR TO THE ANTICIPATED START OF CONSTRUCTION, FOR PROJECTS THAT WILL DISTURB 1 ACRE OR MORE (ONE ACRE OR MORE AFTER JULY 1, 2002), THE OWNER OR OPERATOR OF THE CONSTRUCTION ACTIVITY SHALL SUBMIT A PERMIT APPLICATION FOR STORMWATER DISCHARGE TO THE COLORADO DEPARTMENT OF PUBLIC HEALTH AND ENVIRONMENT, WATER QUALITY CONTROL DIVISION. THE APPLICATION CONTAINS CERTIFICATION OF COMPLETION OF A STORMWATER MANAGEMENT PLAN (SWMP), OF WHICH THIS GRADING AND EROSION CONTROL PLAN MAY BE A PART. FOR INFORMATION OR APPLICATION MATERIALS CONTACT:  
  
COLORADO DEPARTMENT OF PUBLIC HEALTH AND ENVIRONMENT  
WATER QUALITY CONTROL DIVISION  
WOOD - PERMITS  
4300 CHERRY CREEK DRIVE SOUTH  
DENVER, CO 80246-1530  
ATTN: PERMITS UNIT
- ALL DISTURBED AREAS TO BE RESEEDED UPON COMPLETION OF OVERLOT GRADING AND EROSION CONTROL MEASURES HAVE BEEN INSTALLED OR WITHIN 60 DAYS, WHICHEVER IS LESS TIME.

NOTE:

REFERENCE "FLYING HORSE NORTH GRADING AND EROSION CONTROL PLAN (GOLF COURSE AND PRIV. ACCESS ROADS)" APPROVED OCTOBER 2016.

TEMPORARY SEDIMENT BASIN SIZING TABLE				
Basin No.	Disturbed Area (acres)	Undeveloped (acres)	Developed (acres)	Sediment Basin Required Volume (ft <sup>3</sup> )
	*Size d @ 3600 ft <sup>2</sup> /acre*	*Size d @ 500 ft <sup>2</sup> /acre*	*Size d @ 900 ft <sup>2</sup> /acre*	
2	0.50	5.70	3.50	7800
3	1.00	5.40	0.00	6300
4	1.50	0.00	0.40	5760

REFERENCE URBAN DRAINAGE VOLUME 3 SEDIMENT BASIN DESIGN (SEE SHEET 10 FOR DETAIL)

- TSB** TEMPORARY SEDIMENT BASIN
- SF** SILT FENCE
- SBB** STRAW BALE SEDIMENT BARRIER
- VTC** VEHICLE TRACKING CONTROL
- CD** CHECK DAM

LEGEND

- 6600 EXISTING GROUND CONTOUR
- 6600 PROPOSED FINISHED CONTOUR
- FLOW DIRECTION
- EXISTING FLOW
- X SILT FENCE
- STRAW BALES
- FILING BOUNDARY
- H.P. HIGH POINT
- L.P. LOW POINT
- "A" A LOT
- "B" B LOT
- "W/O" WALKOUT LOT
- "T" TRANSITION LOT
- "G" GARDEN LOT
- x 43.33 FG AT LOT LINE

48 HOURS BEFORE YOU DIG,  
CALL UTILITY LOCATORS  
**811**

UTILITY NOTIFICATION CENTER OF COLORADO  
IT'S THE LAW

THE LOCATIONS OF EXISTING UNDERGROUND UTILITIES ARE SHOWN IN AN APPROXIMATE WAY ONLY. THE CONTRACTOR SHALL DETERMINE THE EXACT LOCATION OF ALL EXISTING UTILITIES BEFORE COMMENCING WORK. THE CONTRACTOR SHALL BE FULLY RESPONSIBLE FOR ANY AND ALL DAMAGES WHICH MIGHT BE CAUSED BY HIS FAILURE TO EXACTLY LOCATE AND PRESERVE ANY AND ALL UNDERGROUND UTILITIES.

NO. REVISION

NO.	REVISION	DATE
1	REVISED PER COUNTY COMMENTS	7-21-16
2	REVISED PER COUNTY COMMENTS	9-12-16
3	REVISED PER 90' ROW FOR STAGECOACH RD.	3-1-17
4	REVISED GRADING TO MINIMIZE EARTHWORKS	7-17-17
5	UPDATE GRADING PLAN BASED ON FILING 1 DESIGN	12-12-17
6	REVISED PER COUNTY COMMENTS	3-16-18
7	REVISED PER COUNTY COMMENTS	7-10-18

REVIEW:

PREPARED UNDER MY DIRECT SUPERVISION FOR AND ON BEHALF OF  
CLASSIC CONSULTING ENGINEERS AND SURVEYORS, LLC

MARC A. WHORTON, COLORADO P.E. #37155

DATE

**CLASSIC**  
CONSULTING  
ENGINEERS & SURVEYORS

619 N. Cascade Avenue, Suite 200  
Colorado Springs, Colorado 80903

(719)785-0790  
(719)785-0799(Fax)

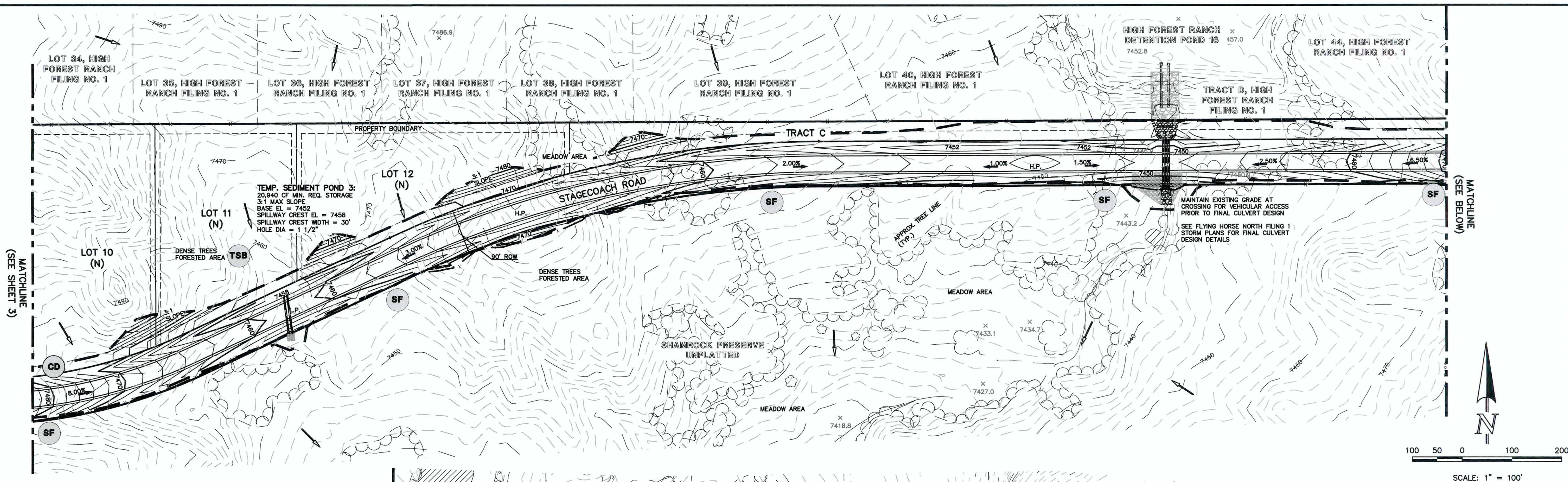
FLYING HORSE NORTH FILING NO. 1  
GRADING AND EROSION CONTROL PLAN

DESIGNED BY	MAW	SCALE	DATE	12/12/17
DRAWN BY	MAW	(H) 1"= 100'	SHEET	3 OF 10
CHECKED BY	(V) 1"= N/A	JOB NO.	1096.11	

EPC 9/25/18

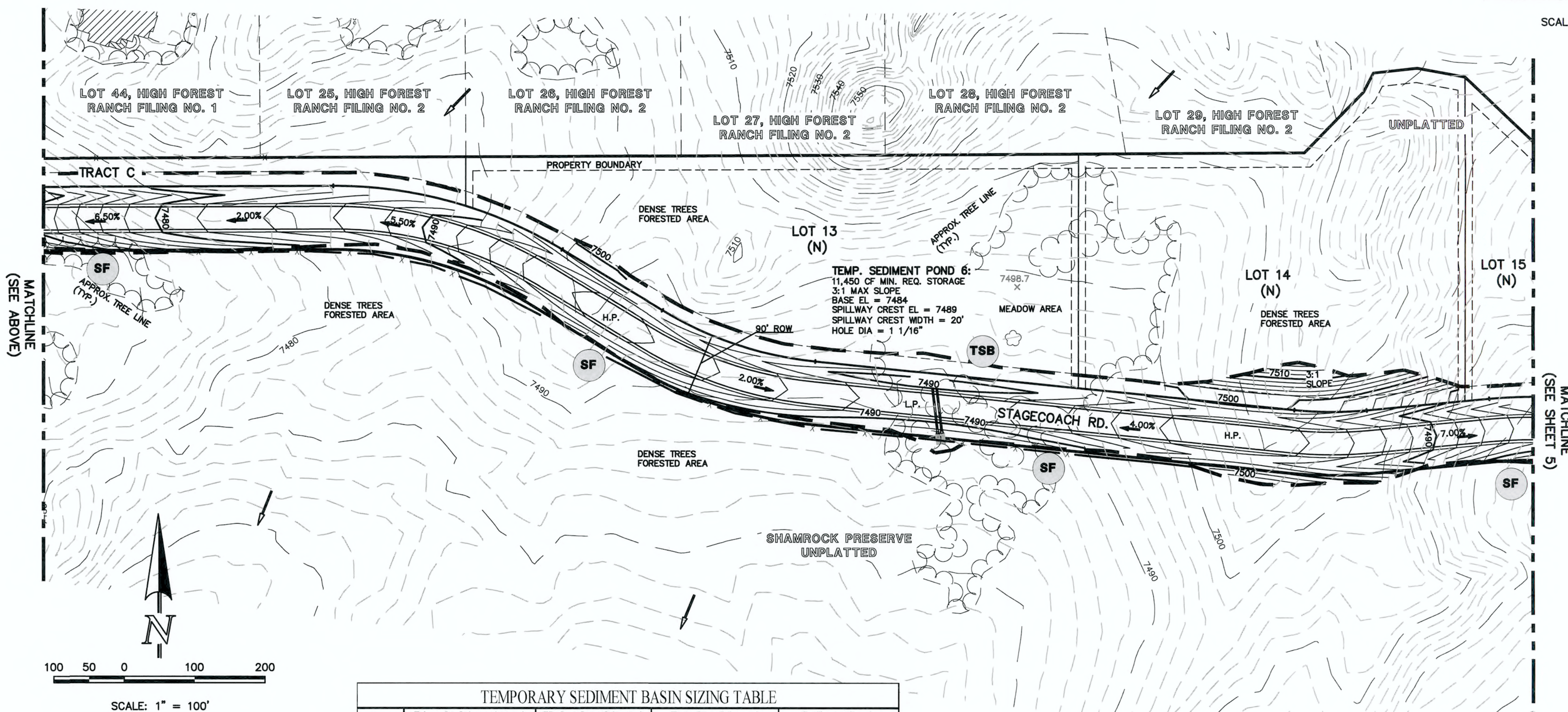
CLASSIC  
ENGINEERS & SURVEYORS





**NOTES:**

1. AT LEAST TEN DAYS PRIOR TO THE ANTICIPATED START OF CONSTRUCTION, FOR PROJECTS THAT WILL DISTURB 1 ACRE OR MORE (ONE ACRE OR MORE AFTER JULY 1, 2002), THE OWNER OR OPERATOR OF THE CONSTRUCTION ACTIVITY SHALL SUBMIT A PERMIT APPLICATION FOR STORMWATER DISCHARGE TO THE COLORADO DEPARTMENT OF PUBLIC HEALTH AND ENVIRONMENT, WATER QUALITY CONTROL DIVISION. THE APPLICATION CONTAINS CERTIFICATION OF COMPLETION OF A STORMWATER MANAGEMENT PLAN (SWMP), OF WHICH THIS GRADING AND EROSION CONTROL PLAN MAY BE A PART. FOR INFORMATION OR APPLICATION MATERIALS CONTACT:  
  
COLORADO DEPARTMENT OF PUBLIC HEALTH AND ENVIRONMENT  
WATER QUALITY CONTROL DIVISION  
WGCD - PERMITS  
4300 CHERRY CREEK DRIVE SOUTH  
DENVER, CO 80246-1530  
ATTN: PERMITS UNIT
2. ALL DISTURBED AREAS TO BE RESEEDED UPON COMPLETION OF OVERLOT GRADING AND EROSION CONTROL MEASURES HAVE BEEN INSTALLED OR WITHIN 60 DAYS, WHICHEVER IS LESS TIME.



- TSB** TEMPORARY SEDIMENT BASIN
- SF** SILT FENCE
- SBB** STRAW BALE SEDIMENT BARRIER
- VTC** VEHICLE TRACKING CONTROL
- CD** CHECK DAM

**LEGEND**

- 6600 EXISTING GROUND CONTOUR
- 6600 PROPOSED FINISHED CONTOUR
- FLOW DIRECTION
- EXISTING FLOW
- X SILT FENCE
- STRAW BALES
- FILING BOUNDARY
- H.P. HIGH POINT
- L.P. LOW POINT
- "A" A LOT
- "B" B LOT
- "W/O" WALKOUT LOT
- "T" TRANSITION LOT
- "G" GARDEN LOT
- x 43.39 FG AT LOT LINE

TEMPORARY SEDIMENT BASIN SIZING TABLE				
Basin No.	Disturbed Area (acres)	Undeveloped (acres)	Developed (acres)	Sediment Basin Required Volume (ft <sup>3</sup> )
	*Sized @ 3600 ft <sup>3</sup> /acre*	*Sized @ 500 ft <sup>3</sup> /acre*	*Sized @ 900 ft <sup>3</sup> /acre*	
3	1.90	9.30	10.50	20940
6	1.00	6.70	5.00	11450

REFERENCE URBAN DRAINAGE VOLUME 3 SEDIMENT BASIN DESIGN (SEE SHEET 14 FOR DETAIL)

48 HOURS BEFORE YOU DIG,  
CALL UTILITY LOCATORS  
**811**

UTILITY NOTIFICATION CENTER OF COLORADO  
IT'S THE LAW  
  
THE LOCATIONS OF EXISTING UNDERGROUND UTILITIES ARE SHOWN IN AN APPROXIMATE WAY ONLY. THE CONTRACTOR SHALL DETERMINE THE EXACT LOCATION OF ALL EXISTING UTILITIES BEFORE COMMENCING WORK. THE CONTRACTOR SHALL BE FULLY RESPONSIBLE FOR ANY AND ALL DAMAGES WHICH MIGHT BE CAUSED BY HIS FAILURE TO EXACTLY LOCATE AND PRESERVE ANY AND ALL UNDERGROUND UTILITIES.

NO.	REVISION	DATE
1	REVISED PER COUNTY COMMENTS	7-25-16
2	REVISED PER 90' ROW FOR STAGECOACH RD.	3-1-17
3	REVISED GRADING TO MINIMIZE EARTHWORKS	7-17-17
4	UPDATE GRADING PLAN PER FILING 1 DESIGN	12-12-17

REVIEW:  
PREPARED UNDER MY DIRECT SUPERVISION FOR AND ON BEHALF OF  
CLASSIC CONSULTING ENGINEERS AND SURVEYORS, LLC

MARC A. WHORTON, COLORADO P.E. #37155

DATE

**CLASSIC**  
CONSULTING  
ENGINEERS & SURVEYORS

619 N. Cascade Avenue, Suite 200  
Colorado Springs, Colorado 80903  
(719) 785-0790  
(719) 785-0799 (Fax)

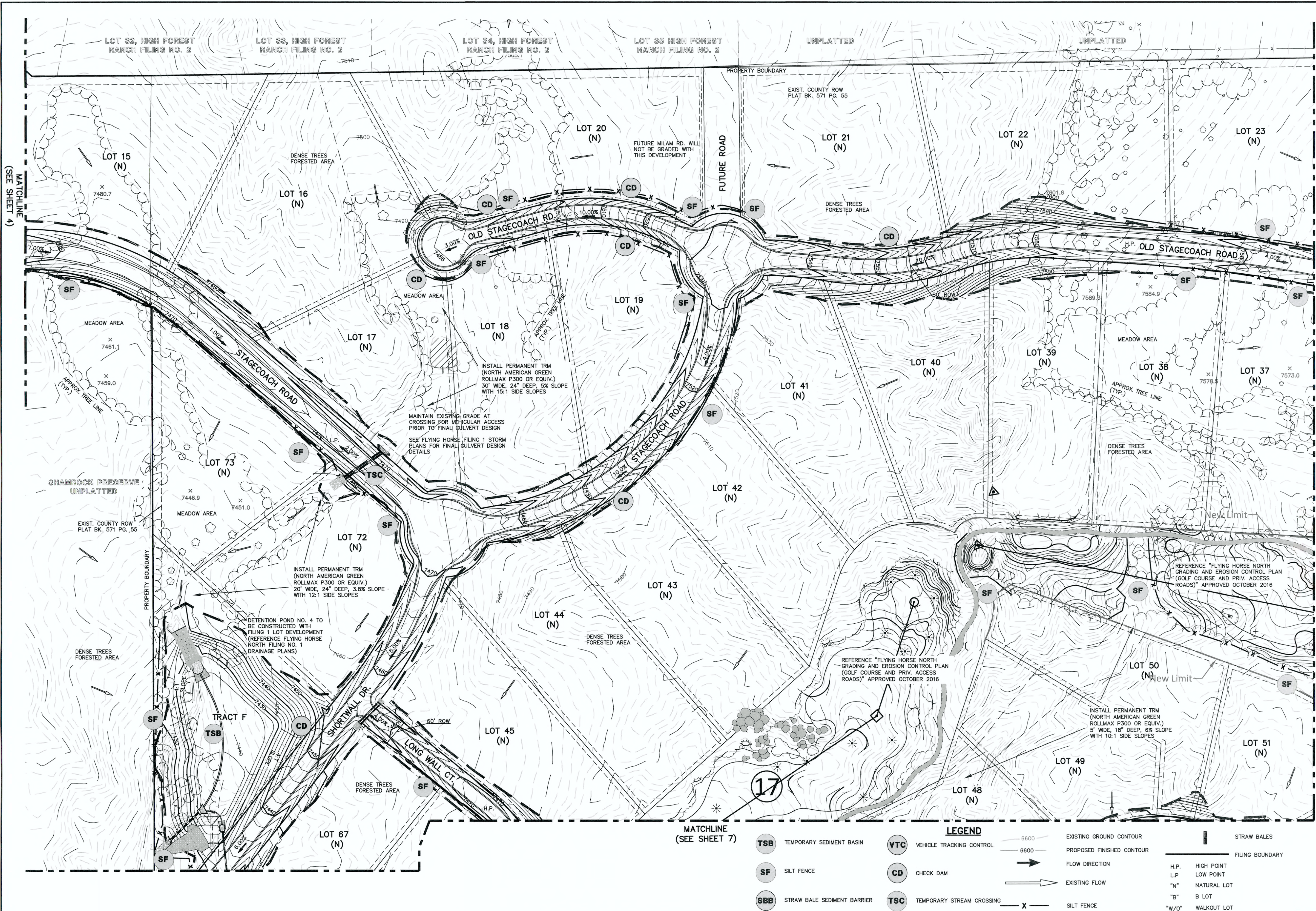
FLYING HORSE NORTH FILING NO. 1  
GRADING AND EROSION CONTROL PLAN

EPC 9/25/18

DESIGNED BY	MAW	SCALE	DATE
DRAWN BY	MAW	(H) 1" = 100'	12/12/17
CHECKED BY		(V) 1" = N/A	SHEET 4 OF 10
			JOB NO. 1096.11

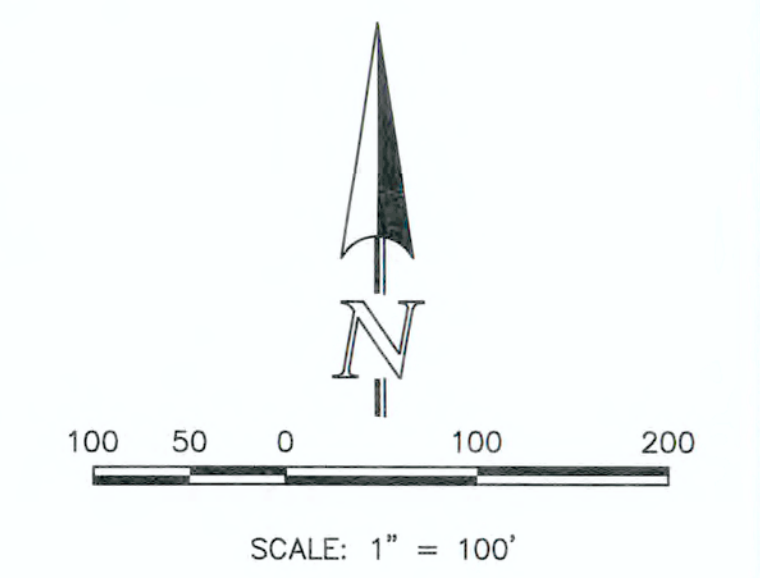
CLASSIC  
ENGINEERS & SURVEYORS





- NOTES:**
1. AT LEAST TEN DAYS PRIOR TO THE ANTICIPATED START OF CONSTRUCTION, FOR PROJECTS THAT WILL DISTURB 1 ACRE OR MORE (ONE ACRE OR MORE AFTER JULY 1, 2002), THE OWNER OR OPERATOR OF THE CONSTRUCTION ACTIVITY SHALL SUBMIT A PERMIT APPLICATION FOR STORMWATER DISCHARGE TO THE COLORADO DEPARTMENT OF PUBLIC HEALTH AND ENVIRONMENT, WATER QUALITY CONTROL DIVISION. THE APPLICATION CONTAINS CERTIFICATION OF COMPLETION OF A STORMWATER MANAGEMENT PLAN (SWMP), OF WHICH THIS GRADING AND EROSION CONTROL PLAN MAY BE A PART. FOR INFORMATION OR APPLICATION MATERIALS CONTACT:
  2. ALL DISTURBED AREAS TO BE RESEEDD UPON COMPLETION OF OVERLOT GRADING AND EROSION CONTROL MEASURES HAVE BEEN INSTALLED OR WITHIN 60 DAYS, WHICHEVER IS LESS TIME.

COLORADO DEPARTMENT OF PUBLIC HEALTH AND ENVIRONMENT  
WATER QUALITY CONTROL DIVISION  
WQCD - PERMITS  
4300 CHERRY CREEK DRIVE SOUTH  
DENVER, CO 80246-1530  
ATTN: PERMITS UNIT

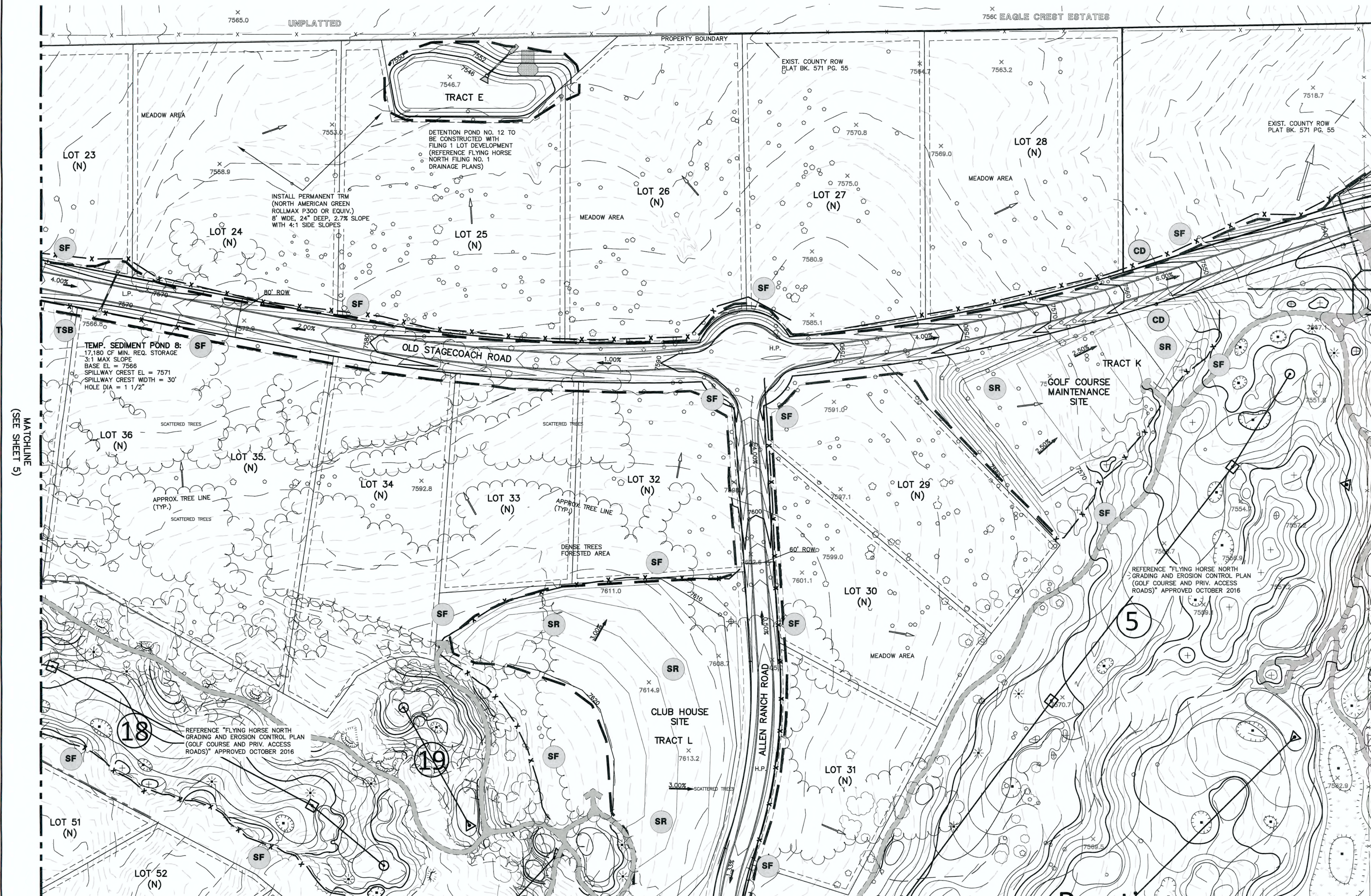


- LEGEND**
- |  |                                      |                                |                   |
|--|--------------------------------------|--------------------------------|-------------------|
| <b>TSB</b> TEMPORARY SEDIMENT BASIN    | <b>VTC</b> VEHICLE TRACKING CONTROL  | 6600 EXISTING GROUND CONTOUR   | STRAW BALES       |
| <b>SF</b> SILT FENCE                   | <b>CD</b> CHECK DAM                  | 6600 PROPOSED FINISHED CONTOUR | FILING BOUNDARY   |
| <b>SBB</b> STRAW BALE SEDIMENT BARRIER | <b>TSC</b> TEMPORARY STREAM CROSSING | → FLOW DIRECTION               | H.P. HIGH POINT   |
|  |                                      | → EXISTING FLOW                | L.P. LOW POINT    |
|  |                                      | X SILT FENCE                   | "N" NATURAL LOT   |
|  |                                      |                                | "B" B LOT         |
|  |                                      |                                | "W/O" WALKOUT LOT |

<p>48 HOURS BEFORE YOU DIG, CALL UTILITY LOCATORS <b>811</b> UTILITY NOTIFICATION CENTER OF COLORADO IT'S THE LAW</p> <p>THE LOCATIONS OF EXISTING UNDERGROUND UTILITIES ARE SHOWN IN AN APPROXIMATE WAY ONLY. THE CONTRACTOR SHALL DETERMINE THE EXACT LOCATION OF ALL EXISTING UTILITIES BEFORE COMMENCING WORK. THE CONTRACTOR SHALL BE FULLY RESPONSIBLE FOR ANY AND ALL DAMAGES WHICH MIGHT BE CAUSED BY HIS FAILURE TO EXACTLY LOCATE AND PRESERVE ANY AND ALL UNDERGROUND UTILITIES.</p>	<table><thead><tr><th>NO.</th><th>REVISION</th><th>DATE</th></tr></thead><tbody><tr><td>1</td><td>REVISED PER COUNTY COMMENTS</td><td>7-25-16</td></tr><tr><td>2</td><td>REVISED PER COUNTY COMMENTS</td><td>9-12-16</td></tr><tr><td>3</td><td>REVISED PER ROAD LAYOUT CHANGE</td><td>3-1-17</td></tr><tr><td>4</td><td>REVISED PER COUNTY COMMENTS</td><td>3-22-17</td></tr><tr><td>5</td><td>REVISED GRADING TO MINIMIZE EARTHWORKS</td><td>7-17-17</td></tr><tr><td>6</td><td>UPDATE GRADING PLAN PER FILING 1 DESIGN</td><td>12-12-17</td></tr><tr><td>7</td><td>REVISED PER COUNTY COMMENTS</td><td>7-10-18</td></tr></tbody></table>	NO.	REVISION	DATE	1	REVISED PER COUNTY COMMENTS	7-25-16	2	REVISED PER COUNTY COMMENTS	9-12-16	3	REVISED PER ROAD LAYOUT CHANGE	3-1-17	4	REVISED PER COUNTY COMMENTS	3-22-17	5	REVISED GRADING TO MINIMIZE EARTHWORKS	7-17-17	6	UPDATE GRADING PLAN PER FILING 1 DESIGN	12-12-17	7	REVISED PER COUNTY COMMENTS	7-10-18	<p>REVIEW:</p> <p>PREPARED UNDER MY DIRECT SUPERVISION FOR AND ON BEHALF OF CLASSIC CONSULTING ENGINEERS AND SURVEYORS, LLC</p> <p>MARC A. WHORTON, COLORADO P.E. #37155</p> <p>7/6/18</p>	<p><b>CLASSIC</b> CONSULTING ENGINEERS &amp; SURVEYORS</p> <p>819 N. Cascade Avenue, Suite 200 Colorado Springs, Colorado 80903</p> <p>(719)785-0790 (719)785-0799(Fax)</p>	<p>FLYING HORSE NORTH FILING NO. 1 GRADING AND EROSION CONTROL PLAN</p> <p>EPC 9/25/18</p> <table><tbody><tr><td>DESIGNED BY</td><td>MAW</td><td>SCALE</td><td>DATE</td></tr><tr><td>DRAWN BY</td><td>MAW</td><td>(H) 1"= 100'</td><td>12/12/17</td></tr><tr><td>CHECKED BY</td><td></td><td>(V) 1"= N/A</td><td>SHEET 5 OF 10</td></tr><tr><td></td><td></td><td></td><td>JOB NO. 1096.11</td></tr></tbody></table>	DESIGNED BY	MAW	SCALE	DATE	DRAWN BY	MAW	(H) 1"= 100'	12/12/17	CHECKED BY		(V) 1"= N/A	SHEET 5 OF 10				JOB NO. 1096.11
	NO.	REVISION	DATE																																									
1	REVISED PER COUNTY COMMENTS	7-25-16																																										
2	REVISED PER COUNTY COMMENTS	9-12-16																																										
3	REVISED PER ROAD LAYOUT CHANGE	3-1-17																																										
4	REVISED PER COUNTY COMMENTS	3-22-17																																										
5	REVISED GRADING TO MINIMIZE EARTHWORKS	7-17-17																																										
6	UPDATE GRADING PLAN PER FILING 1 DESIGN	12-12-17																																										
7	REVISED PER COUNTY COMMENTS	7-10-18																																										
DESIGNED BY	MAW	SCALE	DATE																																									
DRAWN BY	MAW	(H) 1"= 100'	12/12/17																																									
CHECKED BY		(V) 1"= N/A	SHEET 5 OF 10																																									
			JOB NO. 1096.11																																									

\\s:\shared\1\2018\09\01\1096.11\1096.11.dwg - GRADING, 05/18/2018 3:18:27 PM, 1:1





MATCHLINE  
(SEE SHEET 8)

MATCHLINE  
(SEE SHEET 5)

- NOTES:**
1. AT LEAST TEN DAYS PRIOR TO THE ANTICIPATED START OF CONSTRUCTION, FOR PROJECTS THAT WILL DISTURB 1 ACRE OR MORE (ONE ACRE OR MORE AFTER JULY 1, 2002), THE OWNER OR OPERATOR OF THE CONSTRUCTION ACTIVITY SHALL SUBMIT A PERMIT APPLICATION FOR STORMWATER DISCHARGE TO THE COLORADO DEPARTMENT OF PUBLIC HEALTH AND ENVIRONMENT, WATER QUALITY CONTROL DIVISION. THE APPLICATION CONTAINS CERTIFICATION OF COMPLETION OF A STORMWATER MANAGEMENT PLAN (SWMP), OF WHICH THIS GRADING AND EROSION CONTROL PLAN MAY BE A PART. FOR INFORMATION OR APPLICATION MATERIALS CONTACT:  
  
COLORADO DEPARTMENT OF PUBLIC HEALTH AND ENVIRONMENT  
WATER QUALITY CONTROL DIVISION  
WQCD - PERMITS  
4300 CHERRY CREEK DRIVE SOUTH  
DENVER, CO 80246-1530  
ATTN: PERMITS UNIT
  2. ALL DISTURBED AREAS TO BE RESEED UPON COMPLETION OF OVERLOT GRADING AND EROSION CONTROL MEASURES HAVE BEEN INSTALLED OR WITHIN 60 DAYS, WHICHEVER IS LESS TIME.

- TSB** TEMPORARY SEDIMENT BASIN
- SR** SURFACE ROUGHENING
- SF** SILT FENCE
- SBB** STRAW BALE SEDIMENT BARRIER
- VTC** VEHICLE TRACKING CONTROL
- CD** CHECK DAM

**LEGEND**

- 6600 EXISTING GROUND CONTOUR  
6600 PROPOSED FINISHED CONTOUR  
FLOW DIRECTION  
EXISTING FLOW  
SILT FENCE  
STRAW BALES  
FILING BOUNDARY
- H.P. HIGH POINT  
L.P. LOW POINT  
"A" A LOT  
"B" B LOT  
"W/O" WALKOUT LOT  
"T" TRANSITION LOT  
"G" GARDEN LOT  
"FG" FG AT LOT LINE

TEMPORARY SEDIMENT BASIN SIZING TABLE				
Basin No.	Disturbed Area (acres) *Sized @ 3600 ft <sup>2</sup> /acre*	Undeveloped (acres) *Sized @ 500 ft <sup>2</sup> /acre*	Developed (acres) *Sized @ 900 ft <sup>2</sup> /acre*	Sediment Basin Required Volume (ft <sup>3</sup> )
8	1.80	21.40	0.00	17180

REFERENCE URBAN DRAINAGE VOLUME 3 SEDIMENT BASIN DESIGN (SEE SHEET 14 FOR DETAIL)

48 HOURS BEFORE YOU DIG,  
CALL UTILITY LOCATORS  
**811**  
UTILITY NOTIFICATION CENTER OF COLORADO  
IT'S THE LAW

THE LOCATIONS OF EXISTING UNDERGROUND UTILITIES ARE SHOWN IN AN APPROXIMATE WAY ONLY. THE CONTRACTOR SHALL DETERMINE THE EXACT LOCATION OF ALL EXISTING UTILITIES BEFORE COMMENCING WORK. THE CONTRACTOR SHALL BE FULLY RESPONSIBLE FOR ANY AND ALL DAMAGES WHICH MIGHT BE CAUSED BY HIS FAILURE TO EXACTLY LOCATE AND PRESERVE ANY AND ALL UNDERGROUND UTILITIES.

NO.	REVISION	DATE
1	REVISED PER COUNTY COMMENTS	7-25-16
2	REVISED PER COUNTY COMMENTS	9-8-16
3	UPDATE GRADING PLAN PER FILING 1 DESIGN	12-12-17
4	REVISED PER COUNTY COMMENTS	3-16-98
5	REVISED PER COUNTY COMMENTS	7-10-18

REVIEW:  
PREPARED UNDER MY DIRECT SUPERVISION FOR AND ON BEHALF OF  
CLASSIC CONSULTING ENGINEERS AND SURVEYORS, LLC

MARC A. WHORTON, COLORADO P.E. #37155  
DATE 7/10/18

**CLASSIC**  
CONSULTING  
ENGINEERS & SURVEYORS

619 N. Cascade Avenue, Suite 200  
Colorado Springs, Colorado 80903  
(719)785-0790  
(719)785-0799(Fax)

FLYING HORSE NORTH FILING NO. 1 GRADING AND EROSION CONTROL PLAN			
DESIGNED BY	MAW	SCALE	DATE 12/12/17
DRAWN BY	MAW	(H) 1"= 100'	SHEET 6 OF 10
CHECKED BY		(V) 1"= N/A	JOB NO. 1096.11

EPC 9/25/18

CLASSIC  
CONSULTING  
ENGINEERS & SURVEYORS



MATCHLINE (SEE SHEET 5)

NOTES:

1. AT LEAST TEN DAYS PRIOR TO THE ANTICIPATED START OF CONSTRUCTION, FOR PROJECTS THAT WILL DISTURB 1 ACRE OR MORE (ONE ACRE OR MORE AFTER JULY 1, 2002), THE OWNER OR OPERATOR OF THE CONSTRUCTION ACTIVITY SHALL SUBMIT A PERMIT APPLICATION FOR STORMWATER DISCHARGE TO THE COLORADO DEPARTMENT OF PUBLIC HEALTH AND ENVIRONMENT, WATER QUALITY CONTROL DIVISION. THE APPLICATION CONTAINS CERTIFICATION OF COMPLETION OF A STORMWATER MANAGEMENT PLAN (SWMP), OF WHICH THIS GRADING AND EROSION CONTROL PLAN MAY BE A PART. FOR INFORMATION OR APPLICATION MATERIALS CONTACT:

COLORADO DEPARTMENT OF PUBLIC HEALTH AND ENVIRONMENT  
WATER QUALITY CONTROL DIVISION  
WCDC - PERMITS  
4300 CHERRY CREEK DRIVE SOUTH  
DENVER, CO 80246-1530  
ATTN: PERMITS UNIT

2. ALL DISTURBED AREAS TO BE RESEEDD UPON COMPLETION OF OVERLOT GRADING AND EROSION CONTROL MEASURES HAVE BEEN INSTALLED OR WITHIN 60 DAYS, WHICHEVER IS LESS TIME.



60 30 0 60 120

SCALE: 1" = 60'

TEMPORARY SEDIMENT BASIN SIZING TABLE				
Basin No.	Disturbed Area (acres)	Undeveloped (acres)	Developed (acres)	Sediment Basin Required Volume (ft <sup>3</sup> )
	*Sized @ 3600 ft <sup>3</sup> /acre*	*Sized @ 500 ft <sup>3</sup> /acre*	*Sized @ 900 ft <sup>3</sup> /acre*	
9	5.00	10.20	18.60	39840
10	1.40	0.00	4.90	9450
10A	1.00	0.00	4.20	7380

REFERENCE URBAN DRAINAGE VOLUME 3 SEDIMENT BASIN DESIGN (SEE SHEET 14 FOR DETAIL)

48 HOURS BEFORE YOU DIG,  
CALL UTILITY LOCATORS  
**811**

UTILITY NOTIFICATION CENTER OF COLORADO  
IT'S THE LAW

THE LOCATIONS OF EXISTING UNDERGROUND UTILITIES ARE SHOWN IN AN APPROXIMATE WAY ONLY. THE CONTRACTOR SHALL DETERMINE THE EXACT LOCATION OF ALL EXISTING UTILITIES BEFORE COMMENCING WORK. THE CONTRACTOR SHALL BE FULLY RESPONSIBLE FOR ANY AND ALL DAMAGES WHICH MIGHT BE CAUSED BY HIS FAILURE TO EXACTLY LOCATE AND PRESERVE ANY AND ALL UNDERGROUND UTILITIES.

NO. REVISION

NO.	REVISION	DATE
1	REVISED PER COUNTY COMMENTS	7-25-16
2	REVISED PER ROADWAY LAYOUT CHANGE	3-1-17
3	REVISED GRADING TO MINIMIZE EARTHWORKS	7-17-17
4	UPDATE GRADING PLAN PER FILING 1 DESIGN	12-12-17
5	REVISED PER COUNTY COMMENTS	3-16-18
6	REVISED PER COUNTY COMMENTS	7-10-18

REVIEW:

PREPARED UNDER MY DIRECT SUPERVISION FOR AND ON BEHALF OF  
CLASSIC CONSULTING ENGINEERS AND SURVEYORS, LLC

MARC A. WHORTON, COLORADO P.E. #37155  
DATE 7/10/16

**CLASSIC**  
CONSULTING  
ENGINEERS & SURVEYORS

619 N. Cascade Avenue, Suite 200 (719)785-0790  
Colorado Springs, Colorado 80903 (719)785-0799(Fax)

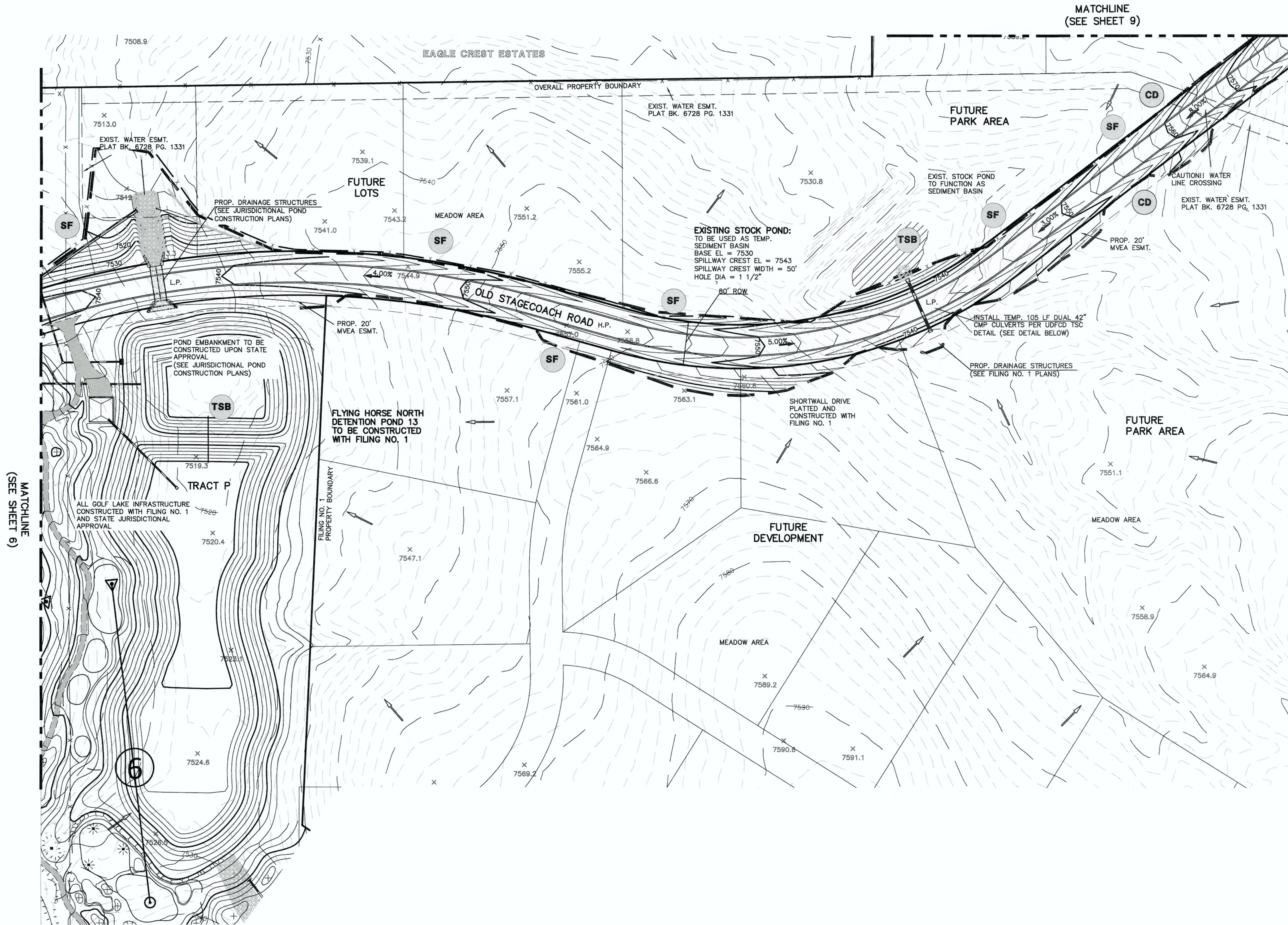
FLYING HORSE NORTH FILING NO. 1  
GRADING AND EROSION CONTROL PLAN

DESIGNED BY	MAW	SCALE	DATE
DRAWN BY	MAW	(H) 1"= 100'	12/12/17
CHECKED BY	(V) 1"= N/A	JOB NO.	1096.11

EPC 9/25/18

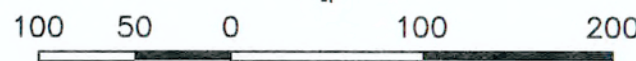
CLASSIC  
ENGINEERS & SURVEYORS





- NOTES:**
- AT LEAST TEN DAYS PRIOR TO THE ANTICIPATED START OF CONSTRUCTION, FOR PROJECTS THAT WILL DISTURB 1 ACRE OR MORE (ONE ACRE OR MORE AFTER JULY 1, 2002), THE OWNER OR OPERATOR OF THE CONSTRUCTION ACTIVITY SHALL SUBMIT A PERMIT APPLICATION FOR STORMWATER DISCHARGE TO THE COLORADO DEPARTMENT OF PUBLIC HEALTH AND ENVIRONMENT, WATER QUALITY CONTROL DIVISION. THE APPLICATION CONTAINS CERTIFICATION OF COMPLETION OF A STORMWATER MANAGEMENT PLAN (SWMP), OF WHICH THIS GRADING AND EROSION CONTROL PLAN MAY BE A PART. FOR INFORMATION OR APPLICATION MATERIALS CONTACT:
  - ALL DISTURBED AREAS TO BE RESEED UPON COMPLETION OF OVERLOT GRADING AND EROSION CONTROL MEASURES HAVE BEEN INSTALLED OR WITHIN 60 DAYS, WHICHEVER IS LESS TIME.

COLORADO DEPARTMENT OF PUBLIC HEALTH AND ENVIRONMENT  
WATER QUALITY CONTROL DIVISION  
WQCD - PERMITS  
4300 CHERRY CREEK DRIVE SOUTH  
DENVER, CO 80246-1530  
ATTN: PERMITS UNIT



SCALE: 1" = 100'

TSB

TEMPORARY SEDIMENT BASIN

SF

SILT FENCE

SBB

STRAW BALE SEDIMENT BARRIER

VTC

VEHICLE TRACKING CONTROL

CD

CHECK DAM

LEGEND

6600

EXISTING GROUND CONTOUR

6600

PROPOSED FINISHED CONTOUR

→

FLOW DIRECTION

→

EXISTING FLOW

X

SILT FENCE

|||||

STRAW BALES

---

FILING BOUNDARY

H.P.

HIGH POINT

L.P.

LOW POINT

"A"

A LOT

"B"

B LOT

"W/O"

WALKOUT LOT

"T"

TRANSITION LOT

"G"

GARDEN LOT

x 43.39

FG AT LOT LINE

48 HOURS BEFORE YOU DIG,  
CALL UTILITY LOCATORS  
**811**  
UTILITY NOTIFICATION CENTER OF COLORADO  
IT'S THE LAW

THE LOCATIONS OF EXISTING UNDERGROUND UTILITIES ARE SHOWN IN AN APPROXIMATE WAY ONLY. THE CONTRACTOR SHALL DETERMINE THE EXACT LOCATION OF ALL EXISTING UTILITIES BEFORE COMMENCING WORK. THE CONTRACTOR SHALL BE FULLY RESPONSIBLE FOR ANY AND ALL DAMAGES WHICH MIGHT BE CAUSED BY HIS FAILURE TO EXACTLY LOCATE AND PRESERVE ANY AND ALL UNDERGROUND UTILITIES.

NO.	REVISION	DATE
1	REVISED PER COUNTY COMMENTS	7-25-16
2	GOLF COURSE MINOR GRADING CHANGE	3-15-17
3	REVISED PER 90' ROW FOR STAGECOACH RD.	3-1-17
4	REVISED GRADING TO MINIMIZE EARTHWORKS	7-17-17
5	UPDATE GRADING PLAN PER FILING 1 DESIGN	12-12-17

REVIEW:

PREPARED UNDER MY DIRECT SUPERVISION FOR AND ON BEHALF OF  
CLASSIC CONSULTING ENGINEERS AND SURVEYORS, LLC

MARC A. WHORTON, COLORADO, P.E. #37155

DATE 6/14/18

CLASSIC

CONSULTING ENGINEERS & SURVEYORS

619 N. Cascade Avenue, Suite 200  
Colorado Springs, Colorado 80903

(719)785-0790  
(719)785-0799(Fax)

FLYING HORSE NORTH FILING NO. 1  
GRADING AND EROSION CONTROL PLAN

EPC 9/25/18

DESIGNED BY

MAW

SCALE

(H) 1"= 100'

(V) 1"= N/A

DATE

12/12/17

SHEET

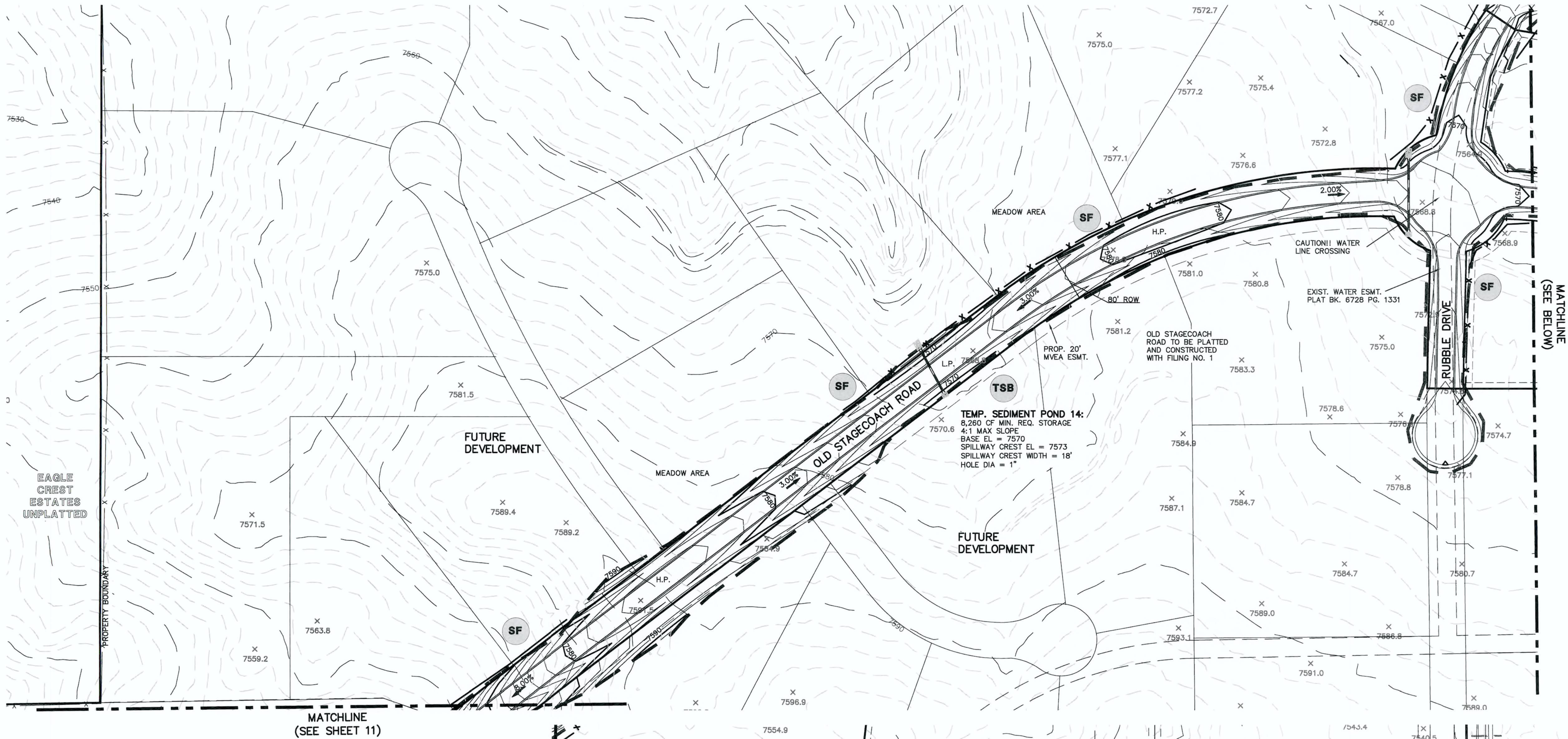
8 OF 10

JOB NO.

1096.11

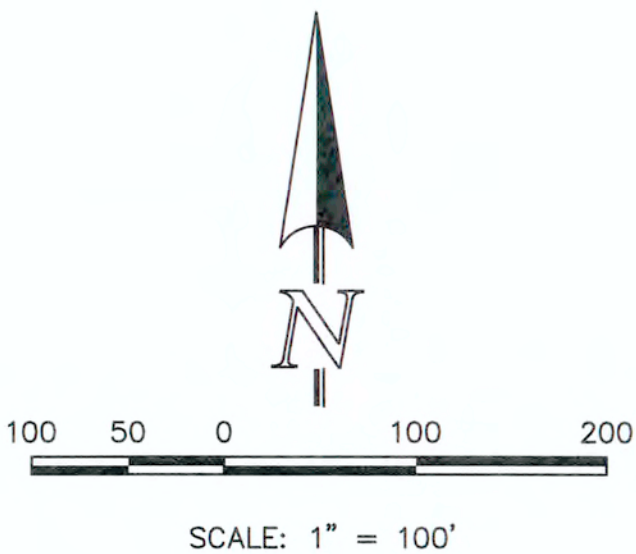
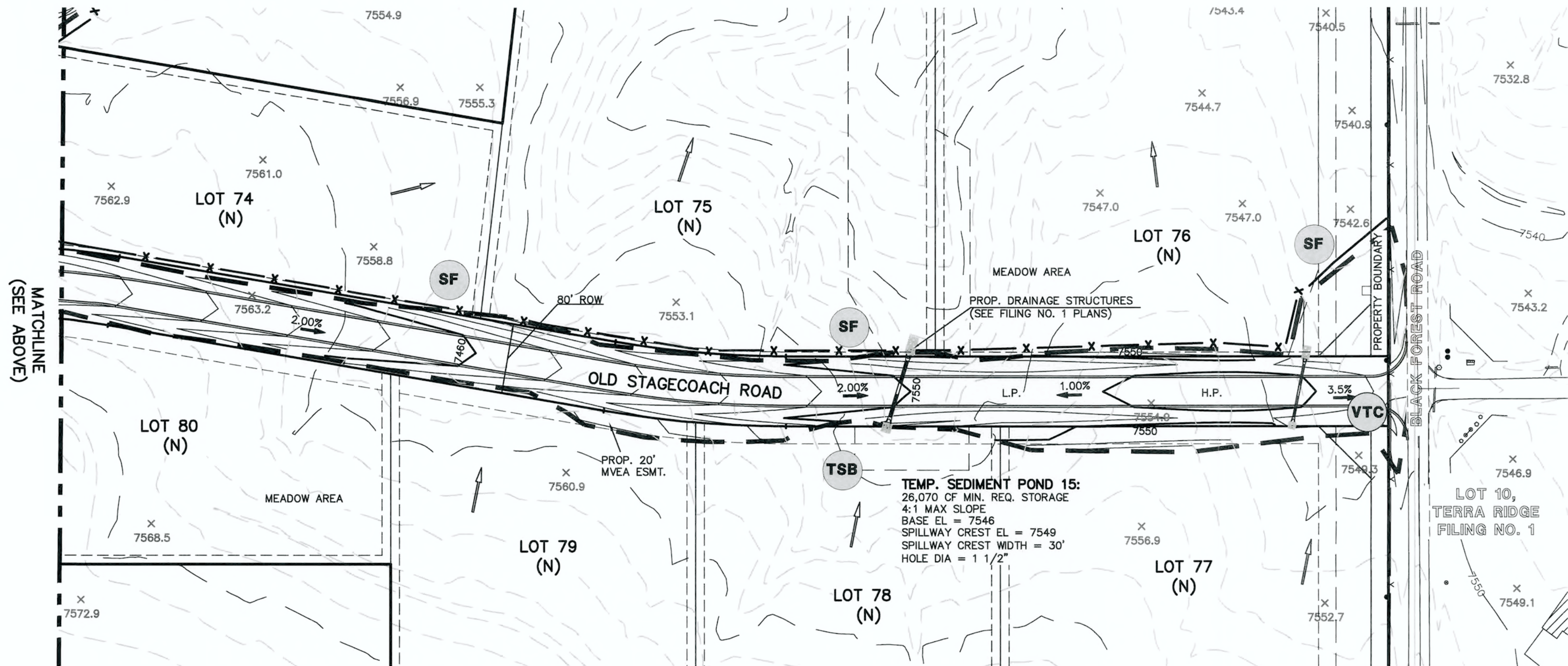
N:\109611\DRAWINGS\CONSTRUCTION\Plan Grading Plan\109611- GRADING 06.dwg, 3/28/2018 12:42:44 PM, 1:1





TEMPORARY SEDIMENT BASIN SIZING TABLE				
Basin No.	*Disturbed Area (acres)	*Undeveloped (acres)	*Developed (acres)	Sediment Basin Required Volume (ft³)
14	0.60	12.20	0.00	8260
15	1.20	43.50	0.00	26070

REFERENCE URBAN DRAINAGE VOLUME 3 SEDIMENT BASIN DESIGN (SEE SHEET 14 FOR DETAIL)



- TSB** TEMPORARY SEDIMENT BASIN
- SF** SILT FENCE
- SBB** STRAW BALE SEDIMENT BARRIER
- VTC** VEHICLE TRACKING CONTROL
- CD** CHECK DAM

**LEGEND**

- 6600 EXISTING GROUND CONTOUR
- 6600 PROPOSED FINISHED CONTOUR
- FLOW DIRECTION
- EXISTING FLOW
- X SILT FENCE
- STRAW BALES
- FILING BOUNDARY

- H.P. HIGH POINT
- L.P. LOW POINT
- "A" A LOT
- "B" B LOT
- "W/O" WALKOUT LOT
- "T" TRANSITION LOT
- "G" GARDEN LOT
- x 43.39 FG AT LOT LINE

48 HOURS BEFORE YOU DIG,  
CALL UTILITY LOCATORS  
**811**

UTILITY NOTIFICATION CENTER OF COLORADO  
IT'S THE LAW

THE LOCATIONS OF EXISTING UNDERGROUND UTILITIES ARE SHOWN IN AN APPROXIMATE WAY ONLY. THE CONTRACTOR SHALL DETERMINE THE EXACT LOCATION OF ALL EXISTING UTILITIES BEFORE COMMENCING WORK. THE CONTRACTOR SHALL BE FULLY RESPONSIBLE FOR ANY AND ALL DAMAGES WHICH MIGHT BE CAUSED BY HIS FAILURE TO EXACTLY LOCATE AND PRESERVE ANY AND ALL UNDERGROUND UTILITIES.

NO.	REVISION	DATE
1	REVISED PER COUNTY COMMENTS	7-26-16
2	REVISED PER COUNTY COMMENTS	9-7-16
3	REVISED PER 90' ROW FOR STAGECOACH RD.	3-1-17
4	REVISED GRADING TO MINIMIZE EARTHWORKS	7-17-17
5	UPDATE GRADING PLAN PER FILING 1 DESIGN	12-12-17

REVIEW:

PREPARED UNDER MY DIRECT SUPERVISION FOR AND ON BEHALF OF  
CLASSIC CONSULTING ENGINEERS AND SURVEYORS, LLC

MARC A. WHORTON, COLORADO P.E. #37155

DATE 6/14/18

**CLASSIC**  
CONSULTING  
ENGINEERS & SURVEYORS

619 N. Cascade Avenue, Suite 200  
Colorado Springs, Colorado 80903

(719)785-0790  
(719)785-0799(Fax)

FLYING HORSE NORTH FILING NO. 1 GRADING AND EROSION CONTROL PLAN			
DESIGNED BY	MAW	SCALE	DATE 12/12/17
DRAWN BY	MAW	(H) 1"= 100'	SHEET 9 OF 10
CHECKED BY		(V) 1"= N/A	JOB NO. 1096.11

EPC 9/25/18

**CLASSIC**  
CONSULTING  
ENGINEERS & SURVEYORS

**NOTES:**

- AT LEAST TEN DAYS PRIOR TO THE ANTICIPATED START OF CONSTRUCTION, FOR PROJECTS THAT WILL DISTURB 1 ACRE OR MORE (ONE ACRE OR MORE AFTER JULY 1, 2002), THE OWNER OR OPERATOR OF THE CONSTRUCTION ACTIVITY SHALL SUBMIT A PERMIT APPLICATION FOR STORMWATER DISCHARGE TO THE COLORADO DEPARTMENT OF PUBLIC HEALTH AND ENVIRONMENT, WATER QUALITY CONTROL DIVISION. THE APPLICATION CONTAINS CERTIFICATION OF COMPLETION OF A STORMWATER MANAGEMENT PLAN (SWMP), OF WHICH THIS GRADING AND EROSION CONTROL PLAN MAY BE A PART. FOR INFORMATION OR APPLICATION MATERIALS CONTACT:  
  
COLORADO DEPARTMENT OF PUBLIC HEALTH AND ENVIRONMENT  
WATER QUALITY CONTROL DIVISION  
WQCD - PERMITS  
4300 CHERRY CREEK DRIVE SOUTH  
DENVER, CO 80246-1530  
ATTN: PERMITS UNIT
- ALL DISTURBED AREAS TO BE RESEEDDED UPON COMPLETION OF OVERLOT GRADING AND EROSION CONTROL MEASURES HAVE BEEN INSTALLED OR WITHIN 60 DAYS, WHICHEVER IS LESS TIME.



SEEDING GUIDELINES

1. SEEDBED PREPARATION

THE SEEDBED SHOULD BE WELL-SETTLED AND FIRM, BUT FRIABLE ENOUGH THAT THE SEED CAN BE PLACED AT THE SPECIFIED DEPTHS. COMPETITIVE STANDS OF WEEDS THAT ARE PRESENT BEFORE SEEDING MUST BE CONTROLLED BY SHALLOW TILLAGE OR BY APPLICATION OF HERBICIDES. SOILS THAT HAVE BEEN OVER-COMPACTED BY TRAFFIC OR EQUIPMENT, ESPECIALLY WHEN WET, SHOULD BE TILLED TO BREAK UP ROOTING-RESTRICTIVE LAYERS, THAN HARROWED, ROLLED, OR PACKED TO PREPARE THE REQUIRED FIRM SEEDBED.

2. FERTILIZER

FERTILIZER SHOULD BE APPLIED AT A RATE OF 50 POUNDS OF AVAILABLE NITROGEN PER ACRE AND 40 POUNDS OF AVAILABLE PHOSPHATE PER ACRE. THE TIME OF APPLICATION SHOULD BE IMMEDIATELY PRIOR TO SEEDING, AT THE TIME OF SEEDING, OR IMMEDIATELY FOLLOWING SEEDING, DEPENDING ON THE KIND OF FERTILIZER AND TYPE OF EQUIPMENT USED.

3. SEEDING

SEED SHOULD BE PLANTED WITH A GRASS DRILL ON ALL SLOPES OF 3:3% (3:1) OR FLATTER. SEED MAY BE BROADCAST BY HAND, BY MECHANICAL SPREADER, OR BY HYDRAULIC EQUIPMENT ON AREAS THAT ARE SMALL, TOO STEEP, OR NOT ACCESSIBLE FOR SEED DRILL OPERATIONS. SEED PLANTED WITH A DRILL SHOULD BE COVERED WITH SOIL TO A DEPTH OF 1/4 TO 3/4 INCH. SEED PLANTED BY THE BROADCAST METHOD SHALL BE INCORPORATED INTO THE SOIL SURFACE, NOT TO EXCEED A DEPTH OF 3/4 INCH, BY RAKING, HARROWING, OR OTHER PROVEN METHOD.

THE TIME OF SEEDING IS FROM OCTOBER 15TH – MAY 31ST. SEED PLANTED IN THE LATE FALL WILL REMAIN DORMANT UNTIL SPRING, WHEN IT WILL GERMINATE.

4. MULCHING

SEEDED AREAS SHOULD BE MULCHED TO CONSERVE MOISTURE; PREVENT SURFACE COMPACTION OR CRUSTING; REDUCE RUNOFF AND EROSION; CONTROL INSECTS; AND HELP ESTABLISH PLANT COVER.

NATIVE HAY OR STRAW SHOULD BE APPLIED AT A RATE OF 4,000 POUNDS PER ACRE AND CRIMPED INTO THE GROUND. ON SLOPES GREATER THAN 3:1, AN AGRONOMY BLANKET SHOULD BE USED.

5. SUPPLEMENTAL WATER

IN LOW RAINFALL AREAS, WHERE WATER IS AVAILABLE AND WHERE RAPID ESTABLISHMENT IS NEEDED, IRRIGATION OF NEW SEEDING SHOULD BE PERFORMED DURING THE FIRST GROWING SEASON. WATER SHOULD BE APPLIED AT APPROXIMATELY ONE WEEK INTERVALS, AT A RATE OF 3/4 TO 1 INCH PER APPLICATION, WHEN RAINFALL IS DEFICIENT FOR PLANT DEVELOPMENT.

EROSION PROTECTION & REVEGETATION REQUIREMENTS  
"PER U.S.D.A. NATURAL RESOURCES CONSERVATION SERVICE GUIDELINES"

1. PRACTICE NO. & NAME  
B - LOAMY SAND

2. PLANNED:  
SEED PREP:  
A METHOD:  
B DATES: OCT 15 - MAY 31  
C CLEAN TILLED: XX  
D FIRM SEEDING: XX  
E INTERSEED: XX  
F STERILE COVER: XX  
G OTHER: XX

SEEDING OPERATION:  
A METHOD:  
B DATES: OCT 15 - MAY 31  
C CLEAN TILLED: XX  
D FIRM SEEDING: XX  
E INTERSEED: XX  
F STERILE COVER: XX  
G OTHER: XX

FERTILIZER:  
POUNDS ACTUAL PER ACRE: 40  
N2 (AVAILABLE): 40  
P205: 40  
K: N/A

WEED CONTROL: N/A  
MOWING: XX  
CHEMICAL: XX  
DATES: SEE S.C.S. FOR SPECIFIC RECOMMENDATIONS AT HERBICIDE APPLICATION TIME

MULCH: LONG - STEM NATIVE HAY  
KIND: 4,000 POUNDS/ACRE  
AMOUNT: 4,000  
HOW-APPLIED: N/A  
HOW-ANCHORED: CRIMPED  
ANCHORAGE DEPTH: 4"

VARIETY	SPECIES	REQUIRED PLS RATES PER ACRES (1000s)
KAW	BIG BLUE STEM	5.5
HOLT	YELLOW INDIAN GRASS	5.0
GOSHEN	PRAIRIE SANDREED	3.5
VAUGHN	SIDEQATS GRAMMA	4.5
NEBRASKA 28	SMITH GRASS	2.5
ARRIBA	PRAIRIE SANDREED	8.0

% OF SPECIES IN MIXTURE	(2) PLS SEEDING RATE PER SPECIES/ACRE (1) x (2)	(3) PLANNED ACRE	(4) TOTAL PLS LBS/ SPECIES PLANNED (3) x (4)
25	1.4	75	105.0
25	1.3	75	97.5
15	0.5	75	37.5
5	0.2	75	15.0
25	0.6	75	45.0
5	0.4	75	30.0

EROSION CONTROL CRITERIA:

EROSION CONTROL MEASURES SHALL BE IMPLEMENTED IN A MANNER THAT WILL PROTECT PROPERTIES AND PUBLIC FACILITIES FROM THE ADVERSE EFFECTS OF EROSION AND SEDIMENTATION AS A RESULT OF CONSTRUCTION AND EARTHWORK ACTIVITIES WITHIN THE PROJECT SITE.

- THE OMISSION FROM OR THE INCLUSION OF UTILITY LOCATIONS ON THE PLANS IS NOT TO BE CONSIDERED AS THE NON-EXISTENCE OF OR A DEFINITE LOCATION OF EXISTING UNDERGROUND UTILITIES.
- DURING GRADING OPERATIONS, LOCATE AND SET THE STRAW BALE CHECK DAMS AND SILT FENCES AS SHOWN ON THE EROSION CONTROL PLAN. AT THIS TIME RESEED ALL DISTURBED AREAS WITH AN EL PASO COUNTY APPROVED SEED MIX.
- SEEDING APPLICATION: DRILLED TO A DEPTH OF .25" TO .50" INTO SOIL WHERE POSSIBLE. BROADCAST AND RAKED TO COVER ON STEEPER THAN 3:1 SLOPES WHERE ACCESS IS LIMITED OR UNSAFE FOR EQUIPMENT.
- MULCHING REQUIREMENT AND APPLICATION: 1.5 TONS PER ACRE NATIVE HAY MECHANICALLY CRIMPED INTO SOIL.
- THE STRAW BALE CHECK DAMS AND SILT FENCES SHALL BE KEPT IN PLACE AND MAINTAINED UNTIL EROSION AND SEDIMENTATION POTENTIAL IS MITIGATED. REMOVAL OF SILT AND SEDIMENT COLLECTED BY THE STRAW BALES IS REQUIRED ONCE IT REACHES HALF THE HEIGHT OF THE STRAW BALES OR SILT FENCE.
- DISTURBED SOIL SHALL BE VEGETATED WITHIN 60 DAYS AFTER SUBSTANTIAL FINAL GRADING IS COMPLETE. PROVIDE TEMPORARY VEGETATION TO DISTURBED AREAS THAT WILL HAVE A PERIOD OF EXPOSURE OF 6 MONTHS OR LONGER PRIOR TO FINAL STABILIZATION.
- ALL FACILITIES, VEGETATION AND OTHER ITEMS REQUIRED BY THE APPROVED FINAL GRADING, EROSION CONTROL AND RECLAMATION PLAN SHALL BE PROPERLY MAINTAINED BY THE OWNERS OF THE PROPERTY. SUCH MAINTENANCE SHALL INCLUDE, BUT NOT BE LIMITED TO, KEEPING ALL EROSION CONTROL FACILITIES IN GOOD ORDER AND FUNCTIONAL, REPAIRING ANY EROSION DAMAGE THAT OCCURS, KEEPING ALL VEGETATION HEALTHY AND IN GROWING CONDITION AND REPLACING ANY DEAD VEGETATION AS SOON AS PRACTICABLE.

- ALL SILT FENCES ARE TO BE REGULARLY INSPECTED AND REPAIRED AS NEEDED.
- THE CONTRACTOR SHALL PROVIDE VEHICLE TRACKING CONTROL FACILITIES FOR EACH ENTRANCE/EXIT TO THE SITE. THE CONTRACTOR SHALL SUBMIT A PLAN WHICH WILL ASSURE USAGE OF THIS FACILITY BY ALL VEHICLES LEAVING THE SITE.
- EROSION CONTROL MEASURES SHALL BE CHECKED AFTER EACH STORM EVENT AND REPAIRED WHEN NECESSARY.
- CONTRACTOR SHALL MAINTAIN ALL TEMPORARY EROSION CONTROL FACILITIES IN GOOD WORKING ORDER UNTIL SUCH TIME AS PERMANENT FACILITIES ARE IN PLACE AND THE CONSTRUCTION MANAGER HAS APPROVED THEIR REMOVAL.
- ADDITIONAL EROSION CONTROL STRUCTURES MAY BE REQUIRED AT THE TIME OF CONSTRUCTION.
- THE EROSION CONTROL MEASURES OUTLINED ON THE PLAN ARE THE RESPONSIBILITY OF THE DEVELOPER TO MONITOR AND REPLACE, REGRADE AND REBUILD AS NECESSARY UNTIL VEGETATION IS ESTABLISHED.
- MAXIMUM ACREAGE OPEN AT ANY GIVEN TIME IS TO BE 30 ACRES.

48 HOURS BEFORE YOU DIG,  
CALL UTILITY LOCATORS  
**811**  
UTILITY NOTIFICATION CENTER OF COLORADO  
IT'S THE LAW

THE LOCATIONS OF EXISTING UNDERGROUND UTILITIES ARE SHOWN IN AN APPROXIMATE WAY ONLY. THE CONTRACTOR SHALL DETERMINE THE EXACT LOCATION OF ALL EXISTING UTILITIES BEFORE COMMENCING WORK. THE CONTRACTOR SHALL BE FULLY RESPONSIBLE FOR ANY AND ALL DAMAGES WHICH MIGHT BE CAUSED BY HIS FAILURE TO EXACTLY LOCATE AND PRESERVE ANY AND ALL UNDERGROUND UTILITIES.

NO. REVISION

DATE

REVIEW:

PREPARED UNDER MY DIRECT SUPERVISION FOR AND ON BEHALF OF  
CLASSIC CONSULTING ENGINEERS AND SURVEYORS, LLC

MARC A. WHORTON, COLORADO P.E. #37155

DATE

CLASSIC CONSULTING ENGINEERS & SURVEYORS

619 N. Cascade Avenue, Suite 200  
Colorado Springs, Colorado 80903

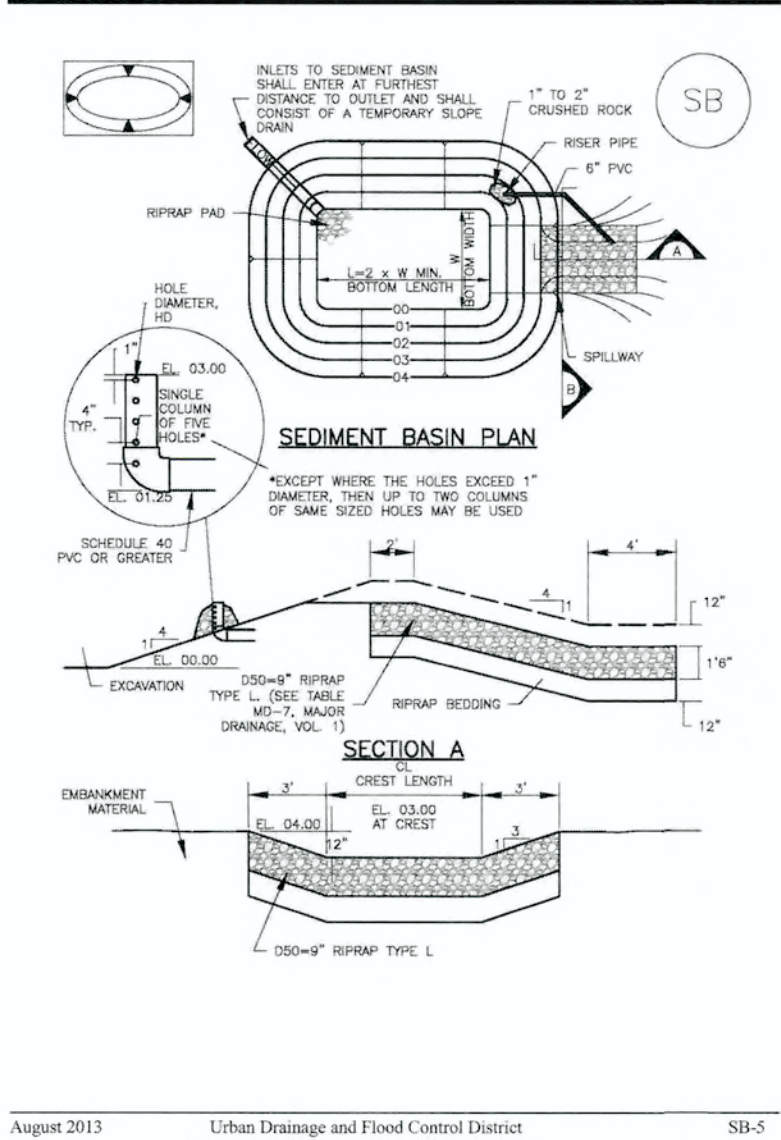
FLYING HORSE NORTH FILING NO. 1  
GRADING AND EROSION CONTROL PLAN

DETAIL SHEET

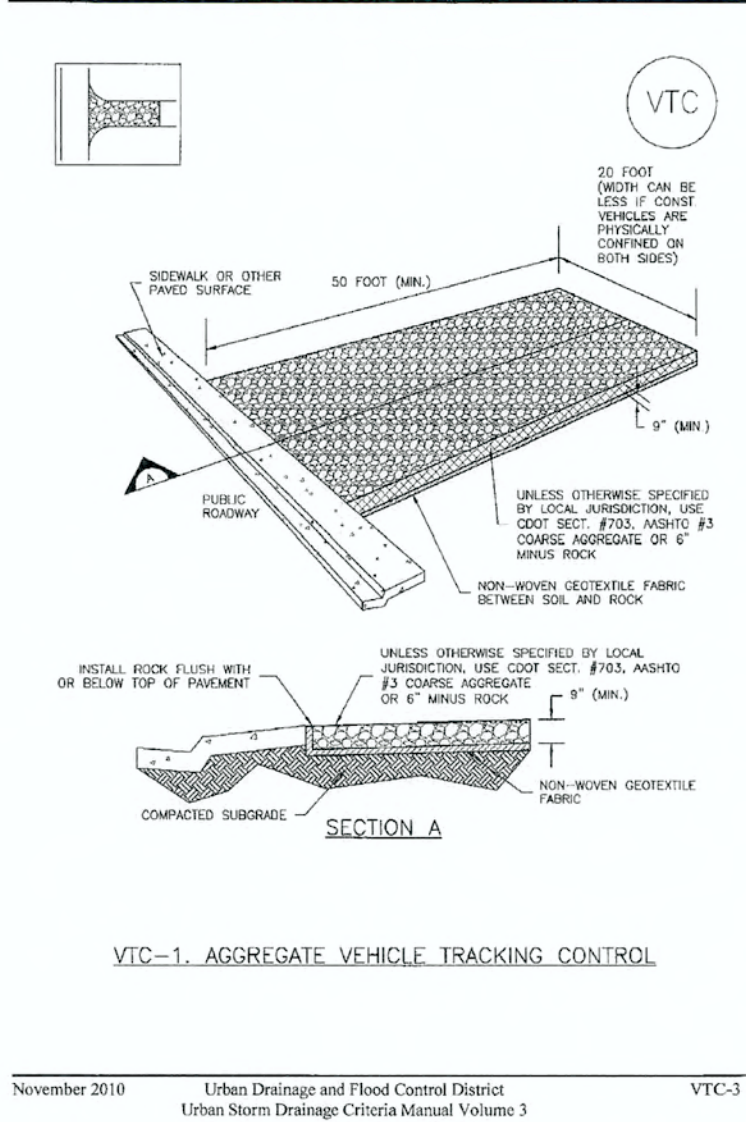
EPC 9/25/18

DESIGNED BY	MAW	SCALE	DATE	12/12/17
DRAWN BY	MAW	(H) 1" = 100'	SHEET	10 OF 10
CHECKED BY	(V) 1" = N/A	JOB NO.	1096.11	

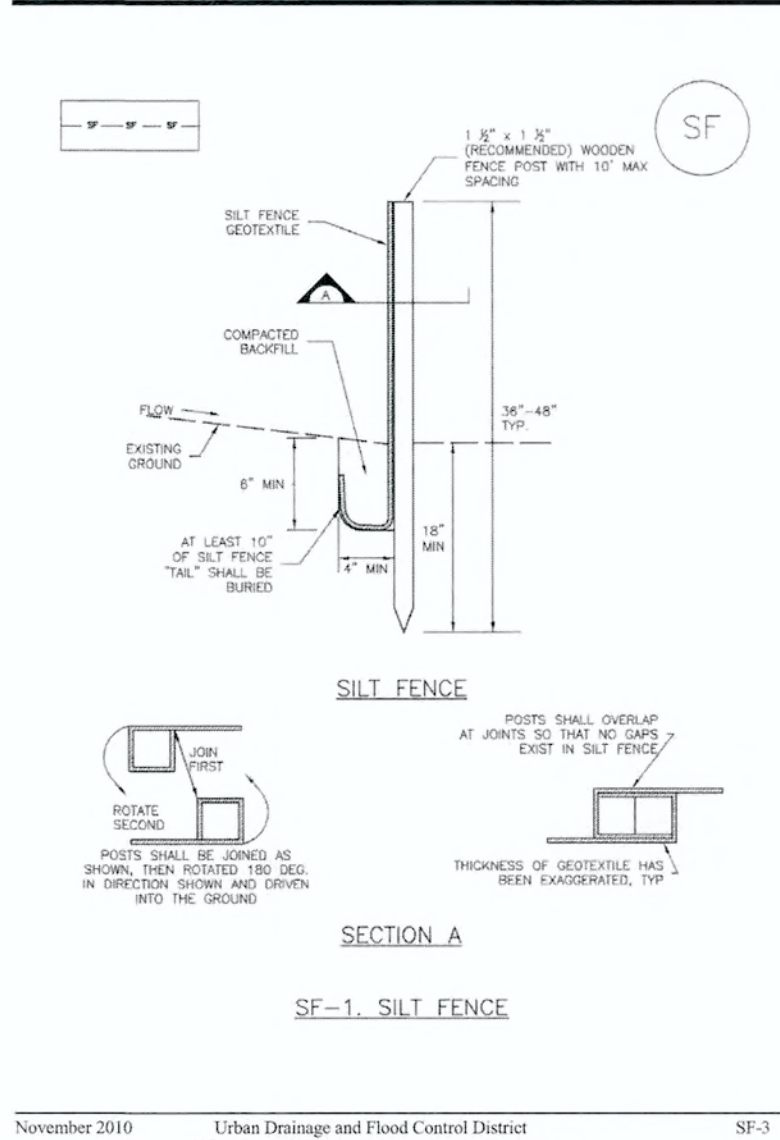
Sediment Basin (SB) SC-7



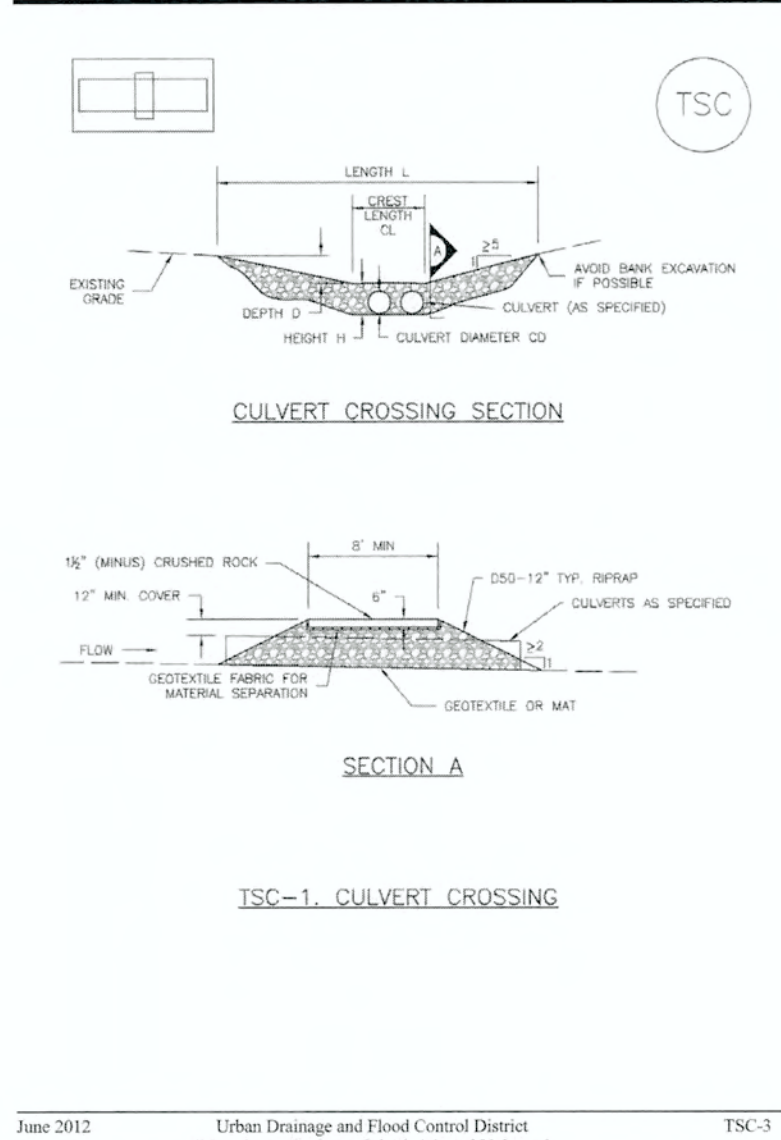
Vehicle Tracking Control (VTC) SM-4



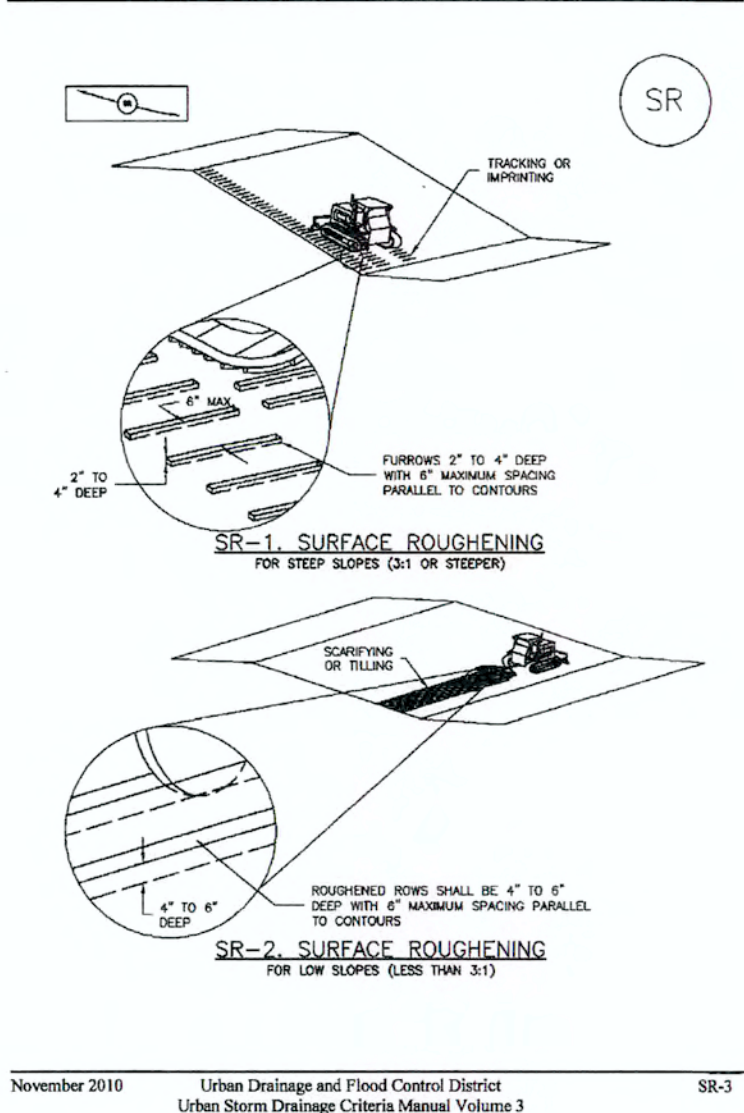
Silt Fence (SF) SC-1



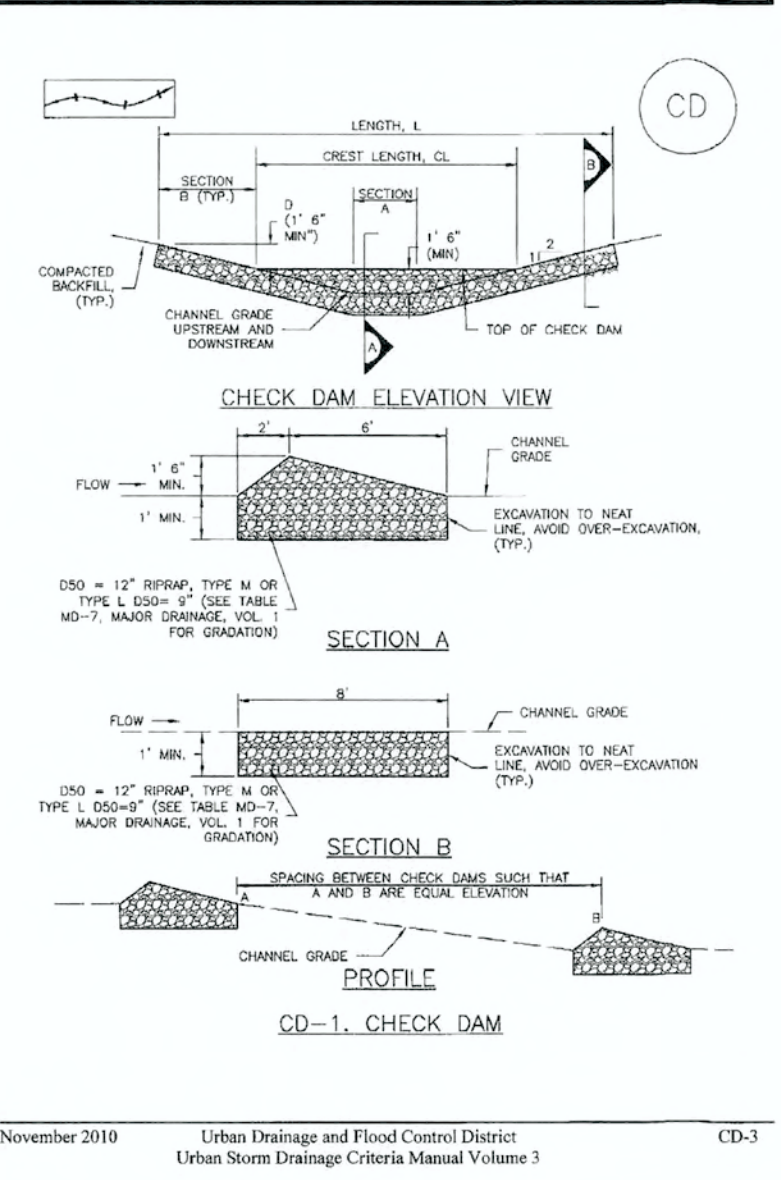
Temporary Stream Crossing (TSC) SM-10



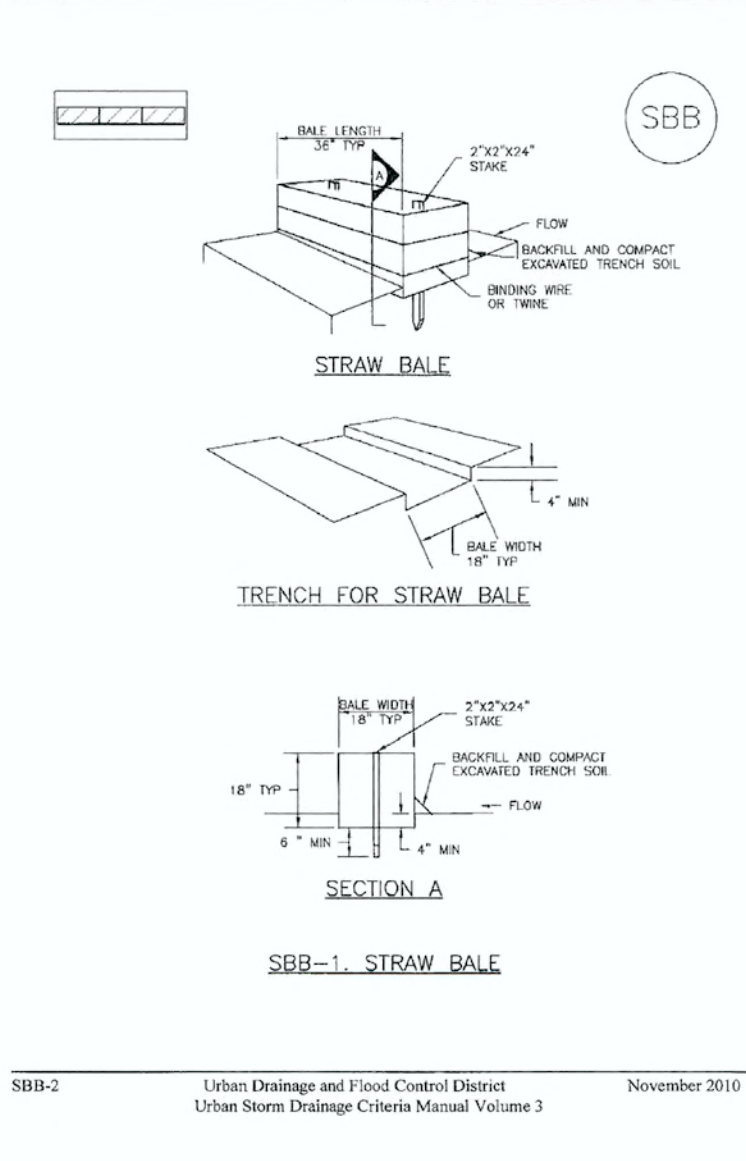
Surface Roughening (SR) EC-1



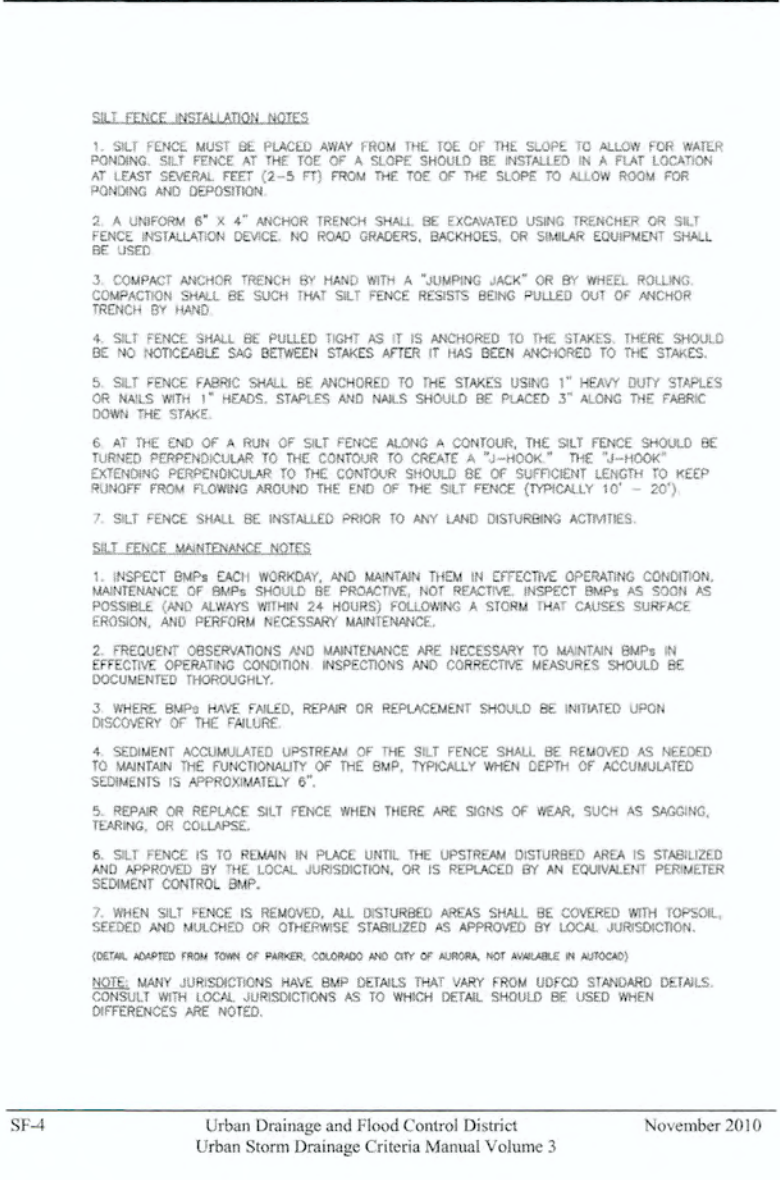
Check Dams (CD) EC-12



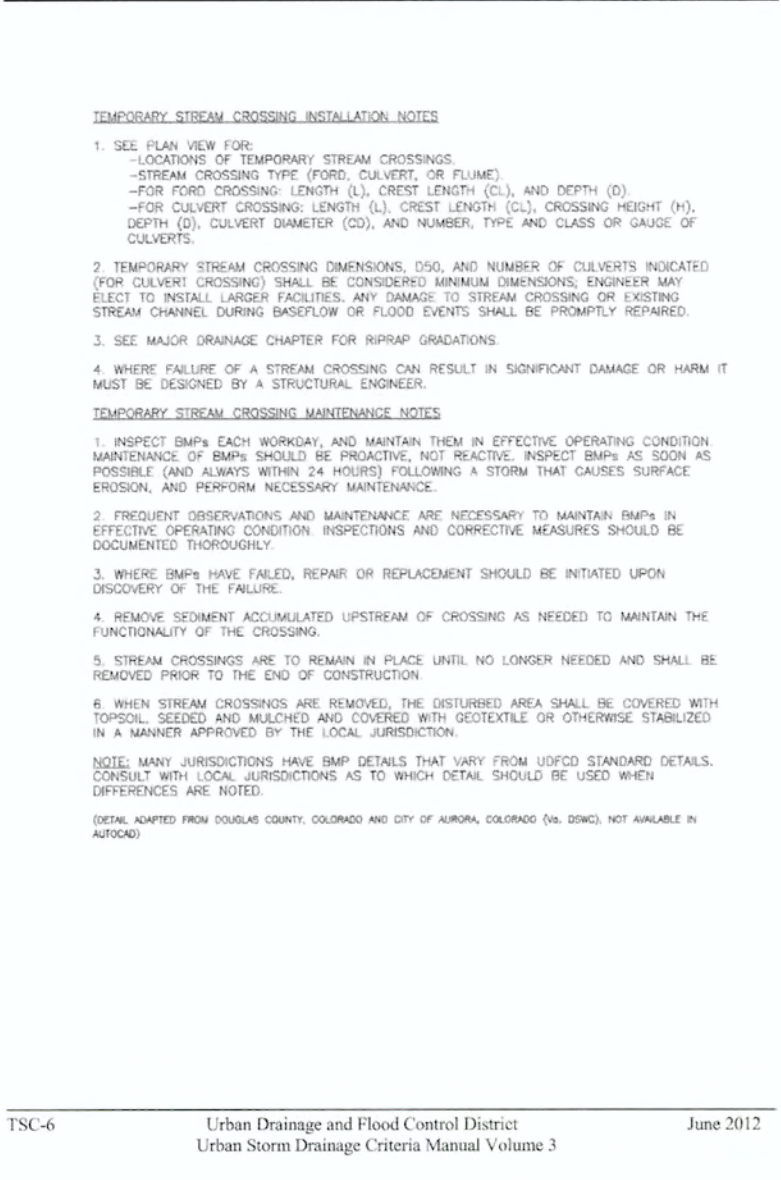
Straw Bale Barrier (SBB) SC-3



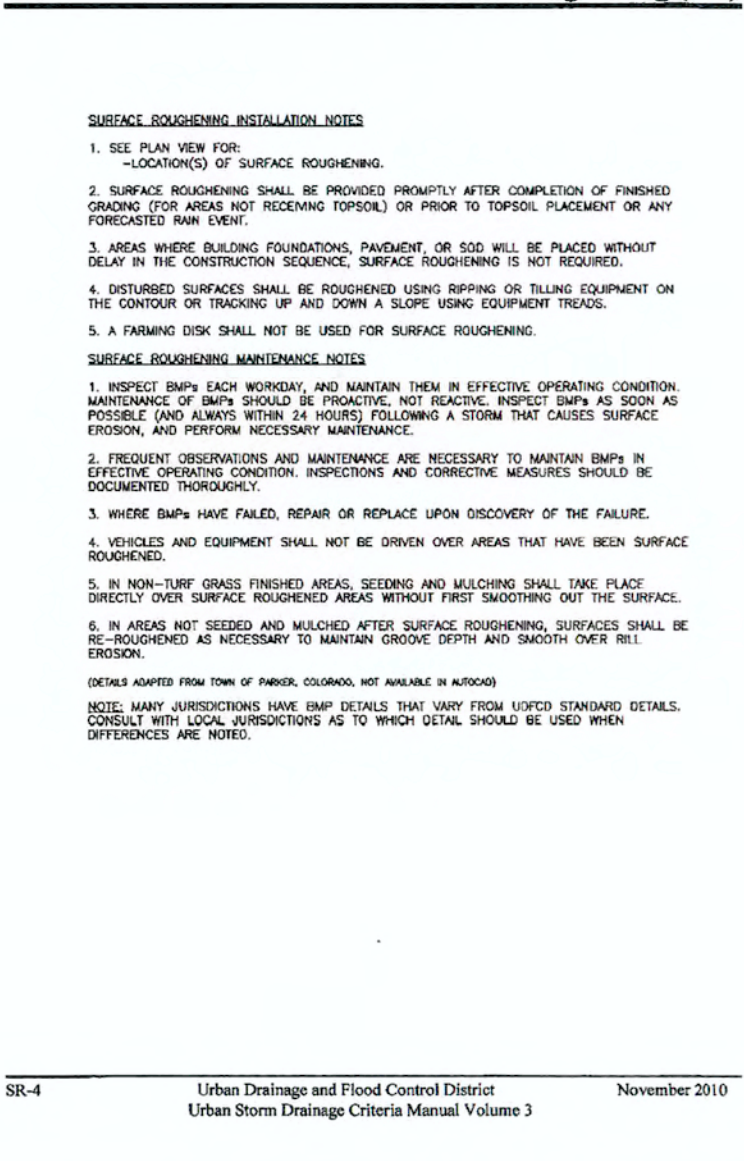
Silt Fence (SF) SC-1



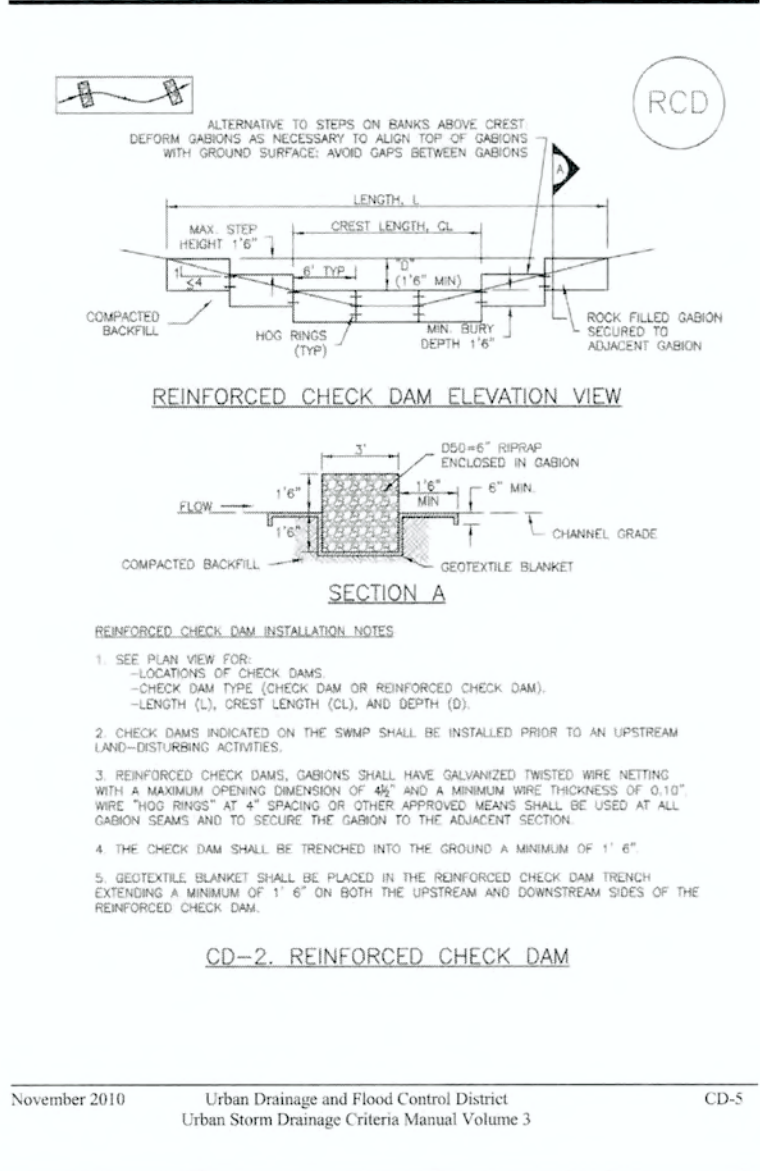
Temporary Stream Crossing (TSC) SM-10



Surface Roughening (SR) EC-1



Check Dams (CD) EC-12



Check Dams (CD) EC-12

