

GRANDWOOD RANCH

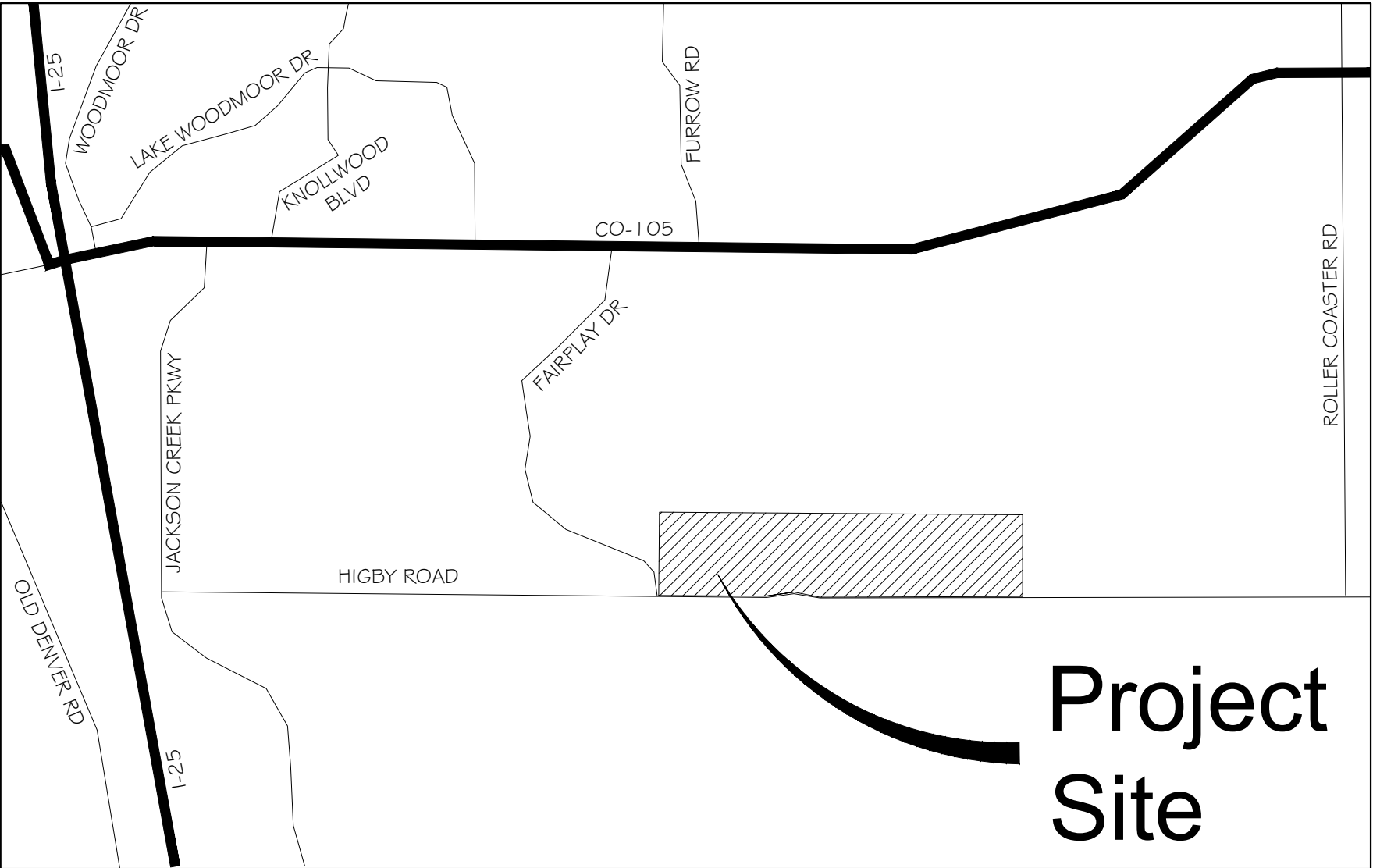
EL PASO COUNTY, CO

FINAL GRADING & EROSION CONTROL PLANS

SEPTEMBER, 2020

INDEX OF SHEETS		SHEET No.
TS01	TITLE SHEET	1
GEN01	LEGEND & ABBREVIATION NOTES	2
GN01	GENERAL NOTES	3
GEC01-GEC03	GRADING & EROSION CONTROL PLAN	4-6
ECD01-ECD03	EROSION CONTROL DETAILS	7-9

THIS FINAL GRADING AND EROSION CONTROL PLAN IS AN ACCURATE REPRESENTATION OF THE GENERAL DRAINAGE PATTERNS ON THE SITE, BUT IS NOT A COMPREHENSIVE DETAILED GRADING PLAN THAT ADDRESSES ALL CONDITIONS THAT MAY OCCUR. THE GRADING OF EACH LOT SHOULD BE CHECKED BY THE HOMEBUILDER TO ENSURE THAT DRAINAGE WILL NOT BE COMPROMISED ON THE LOT OR THE ADJACENT LOTS. CONTRACTOR TO CONTACT DESIGN ENGINEER IF FIELD CONDITIONS DIFFER FROM WHAT IS SHOWN WITHIN THESE PLANS.



OWNER'S STATEMENT:

THE OWNER WILL COMPLY WITH THE REQUIREMENTS OF THE GRADING AND EROSION CONTROL PLAN.

WILLIAM F. HEREBIC II
14160 GLENEAGLE DRIVE
COLORADO SPRINGS, CO 80921

DATE

ENGINEER'S STATEMENT:

THIS GRADING AND EROSION CONTROL PLAN WAS PREPARED UNDER MY DIRECTION AND SUPERVISION AND IS CORRECT TO THE BEST OF MY KNOWLEDGE AND BELIEF. SAID PLAN HAS BEEN PREPARED ACCORDING TO THE CRITERIA ESTABLISHED BY THE COUNTY FOR GRADING AND EROSION CONTROL PLANS. I ACCEPT RESPONSIBILITY FOR ANY LIABILITY CAUSED BY ANY NEGLIGENT ACTS, ERRORS OR OMISSIONS ON MY PART IN PREPARING THIS REPORT.

NICOLE SCHANEL, PE #52434

DATE

EL PASO COUNTY:

COUNTY PLAN REVIEW IS PROVIDED ONLY FOR GENERAL CONFORMANCE WITH COUNTY DESIGN CRITERIA. THE COUNTY IS NOT RESPONSIBLE FOR THE ACCURACY AND ADEQUACY OF THE DESIGN, DIMENSIONS, AND/ OR ELEVATIONS WHICH SHALL BE CONFIRMED AT THE JOB SITE. THE COUNTY THROUGH THE APPROVAL OF THIS DOCUMENT ASSUMES NO RESPONSIBILITY FOR COMPLETENESS AND/ OR ACCURACY OF THIS DOCUMENT.

FILED IN ACCORDANCE WITH THE REQUIREMENTS OF THE EL PASO COUNTY LAND DEVELOPMENT CODE, DRAINAGE CRITERIA MANUAL, VOLUMES 1 AND 2, AND ENGINEERING CRITERIA MANUAL AS AMENDED.

IN ACCORDANCE WITH ECM SECTION 1.12, THESE CONSTRUCTION DOCUMENTS WILL BE VALID FOR CONSTRUCTION FOR A PERIOD OF 2 YEARS FROM THE DATE SIGNED BY THE EL PASO COUNTY ENGINEER. IF CONSTRUCTION HAS NOT STARTED WITHIN THOSE 2 YEARS, THE PLANS WILL NEED TO BE RESUBMITTED FOR APPROVAL, INCLUDING PAYMENT OF REVIEW FEES AT THE PLANNING AND COMMUNITY DEVELOPMENT DIRECTORS DISCRETION.

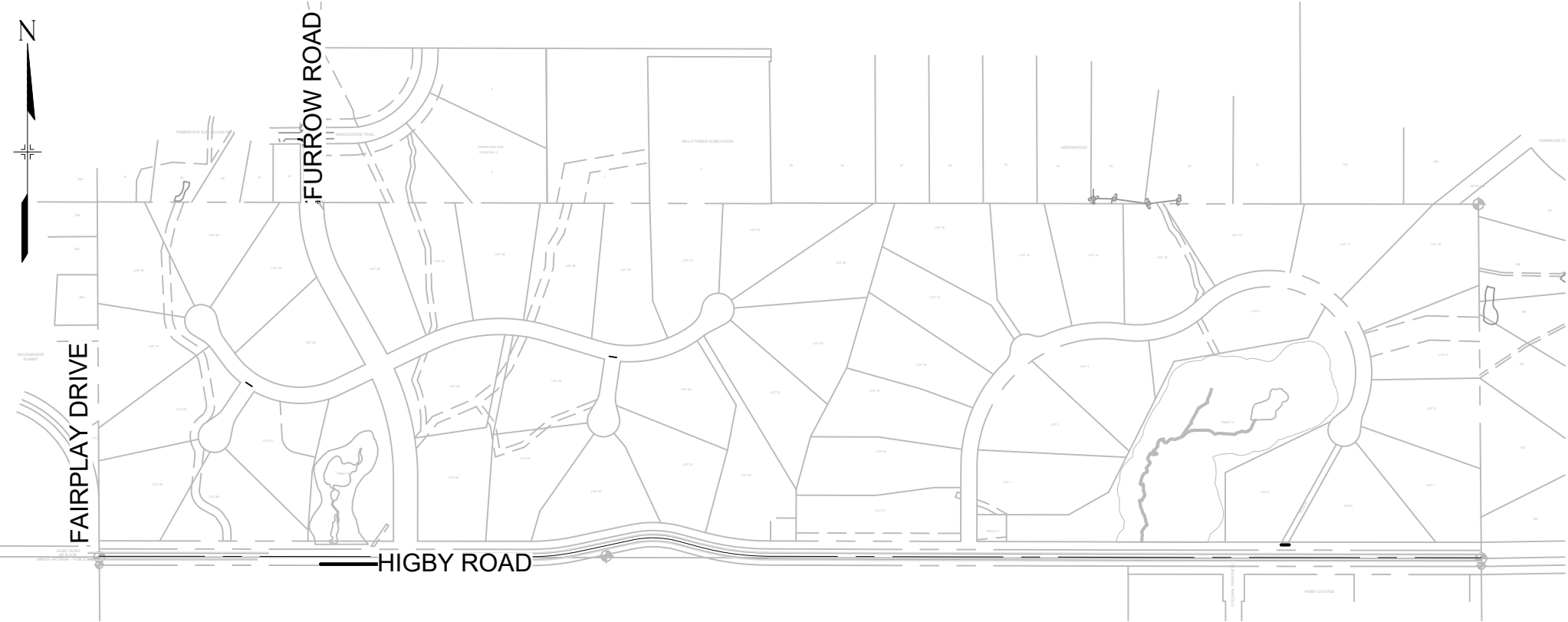
JENNIFER IRVINE, P.E.

COUNTY ENGINEER / ECM ADMINISTRATOR

DATE

TRAFFIC CONTROL NOTE:

THE CONTRACTOR SHOULD PROVIDE ALL TRAFFIC CONTROL DEVICES AND MONITORING NECESSARY TO SAFELY COMPLETE THE WORK SHOWN IN THESE CONSTRUCTION DOCUMENTS IN CONFORMANCE WITH M.U.T.C.D. GUIDELINES. THE CONTRACTOR SHALL COMPLETE ALL NECESSARY WORK FOR PLAN REVIEW, PERMITS, AND PROCESSING. TRAFFIC CONTROL WILL NOT BE PAID SEPARATELY BUT IS INCLUDED IN THE COST OF THE PROJECT.



SITE MAP

N.T.S.


VICINITY MAP

N.T.S.

OWNER/DEVELOPER	SYLVAN VISTA, INC. 14160 GLENEAGLE DRIVE COLORADO SPRINGS, CO 80921
CIVIL ENGINEER	MATRIX DESIGN GROUP 2435 RESEARCH PARKWAY, SUITE 300 COLORADO SPRINGS, CO 80920
ELECTRIC	MOUNTAINVIEW ELECTRIC ASSOCIATION (719) 495-2283
GAS	BLACK HILLS ENERGY 105 SOUTH VICTORIA AVENUE PUEBLO, CO (888) 890-5554
STREET	EL PASO COUNTY PLANNING AND COMMUNITY DEVELOPMENT INSPECTIONS 2880 INTERNATIONAL CIRCLE, SUITE 110 COLORADO SPRINGS, CO 80910 (719) 520-6819
DRAINAGE	EL PASO COUNTY DEPARTMENT OF PUBLIC WORKS STORMWATER TEAM 3275 AKERS DRIVE COLORADO SPRINGS, CO 80922 (719) 520-6877
FIRE DEPARTMENT	TRI-LAKES MONUMENT FIRE RESCUE 16055 OLD FOREST POINT, SUITE 103 MONUMENT, CO 80132 (719) 484-0911

REFERENCE DRAWINGS	###	###	###	###
	###	###	###	###
	###	###	###	###
	###	###	###	###
	###	###	###	###
	###	###	###	###
	###	###	###	###
X-Title-W-Final X-1105-EX SITE DESIGN	No.	DATE	DESCRIPTION	BY
REVISIONS				
COMPUTER FILE MANAGEMENT				
FILE NAME: S:\20.1105.004 Grandwood Ranch\100 Dwg\104 Plan Sets\Construction Plans\GEC Plan\Final\TS01.dwg				
CTB FILE: ----				
PLOT DATE: September 21, 2020 11:07:33 AM				
THIS DRAWING IS CURRENT AS OF PLOT DATE AND MAY BE SUBJECT TO CHANGE.				

SHEET KEY	BENCHMARK	NGS T 294 ELEVATION - 7247.10' NAVD 88
	BASIS OF BEARING:	A LINE THAT IS 20' NORTH OF AND PARALLEL WITH THE EAST-WEST CENTER LINE OF SECTION 19, T11S, R66W, N89°56'32"W - 5135.84'. THE DIRECTION IS A GRID BEARING OF THE COLORADO STATION PLANE COORDINATE SYSTEM, CENTRAL ZONE, N.A.D. 1983. THE LINE IS MONUMENTED BY 5/8" DIAMETER REBAR, 18" IN LENGTH WITH 1-1/2" ALUMINUM CAPS "LWA PLS 28658"

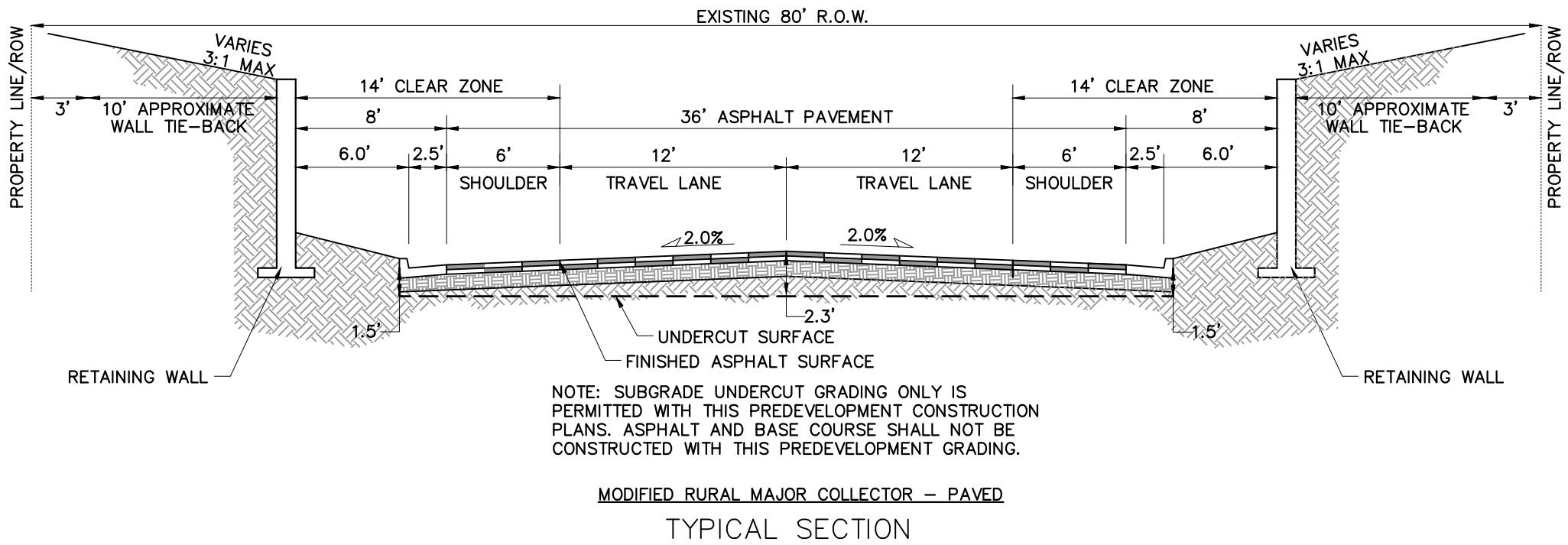
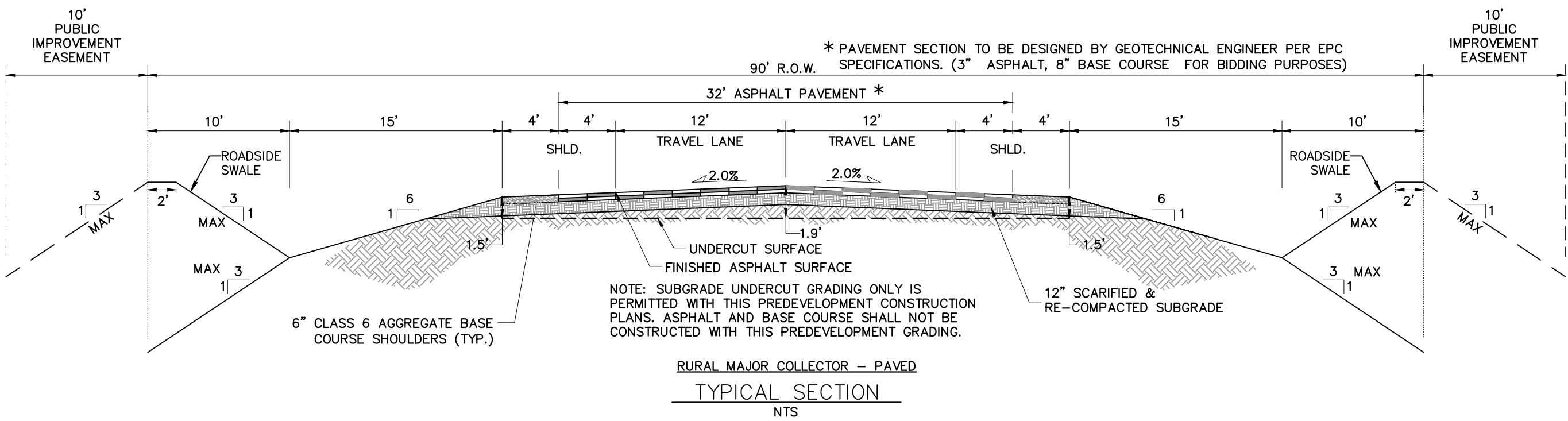
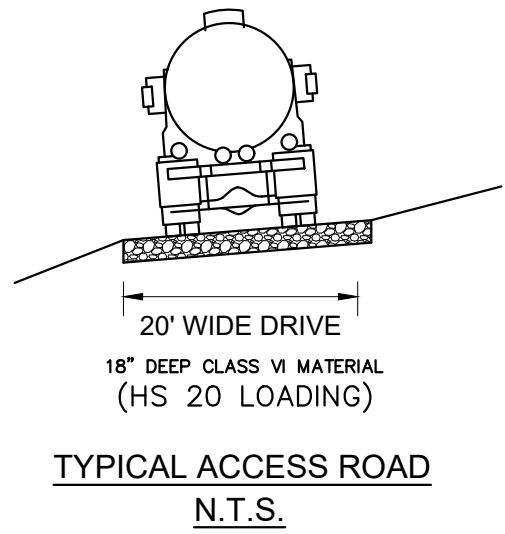
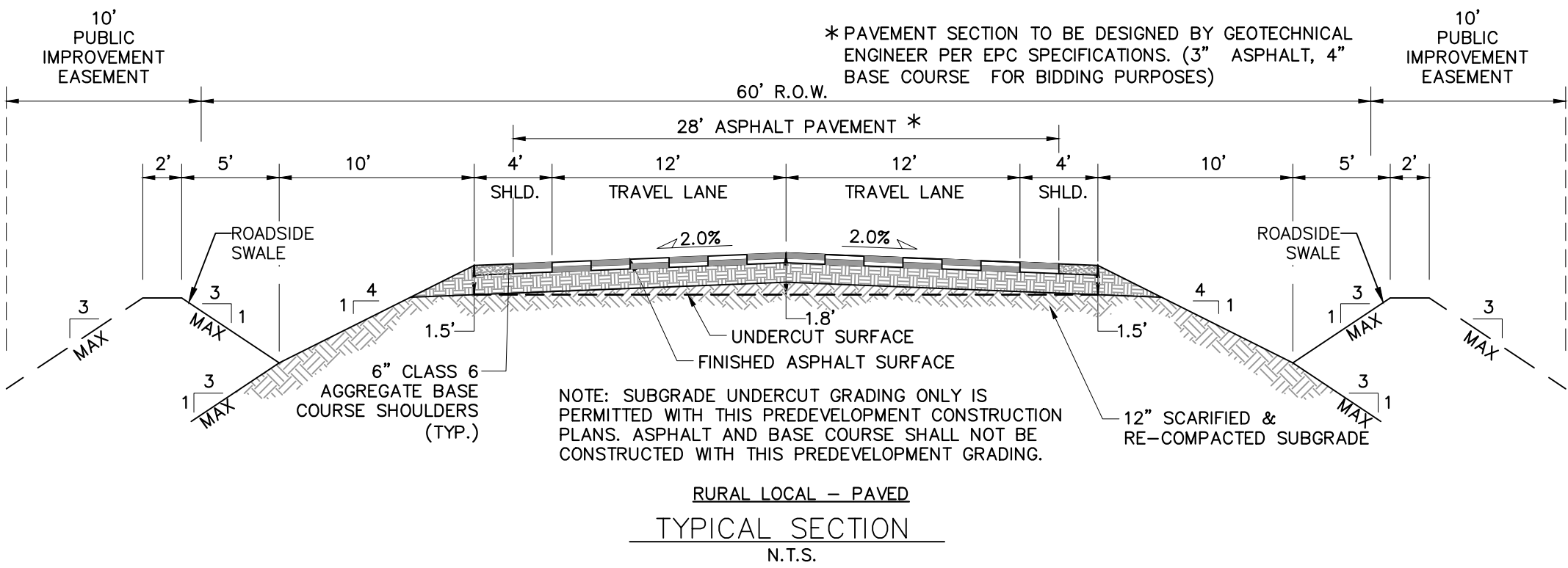
<div>OWNER: SYLVAN VISTA, INC. WILLIAM F. HEREBIC II, MANAGER 14160 GLENEAGLE DRIVE COLORADO SPRINGS, CO 80921</div> <div>PREPARED BY:</div> <div></div>	<div>SEAL</div>	GRANDWOOD RANCH					
		EL PASO COUNTY FINAL GRADING & EROSION CONTROL PLANS					
		TITLE SHEET					
		FOR AND ON BEHALF OF MATRIX DESIGN GROUP, INC. PROJECT No. 20.1105.004			DESIGNED BY: TS DRAWN BY: CP CHECKED BY: NS		
			SCALE HORIZ. N/A VERT. N/A		DATE ISSUED: SEPTEMBER, 2020 SHEET 1 OF 9		DRAWING No. TS01

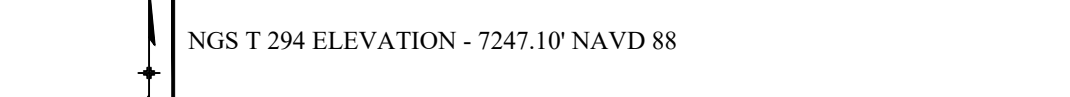

ABBREVIATIONS

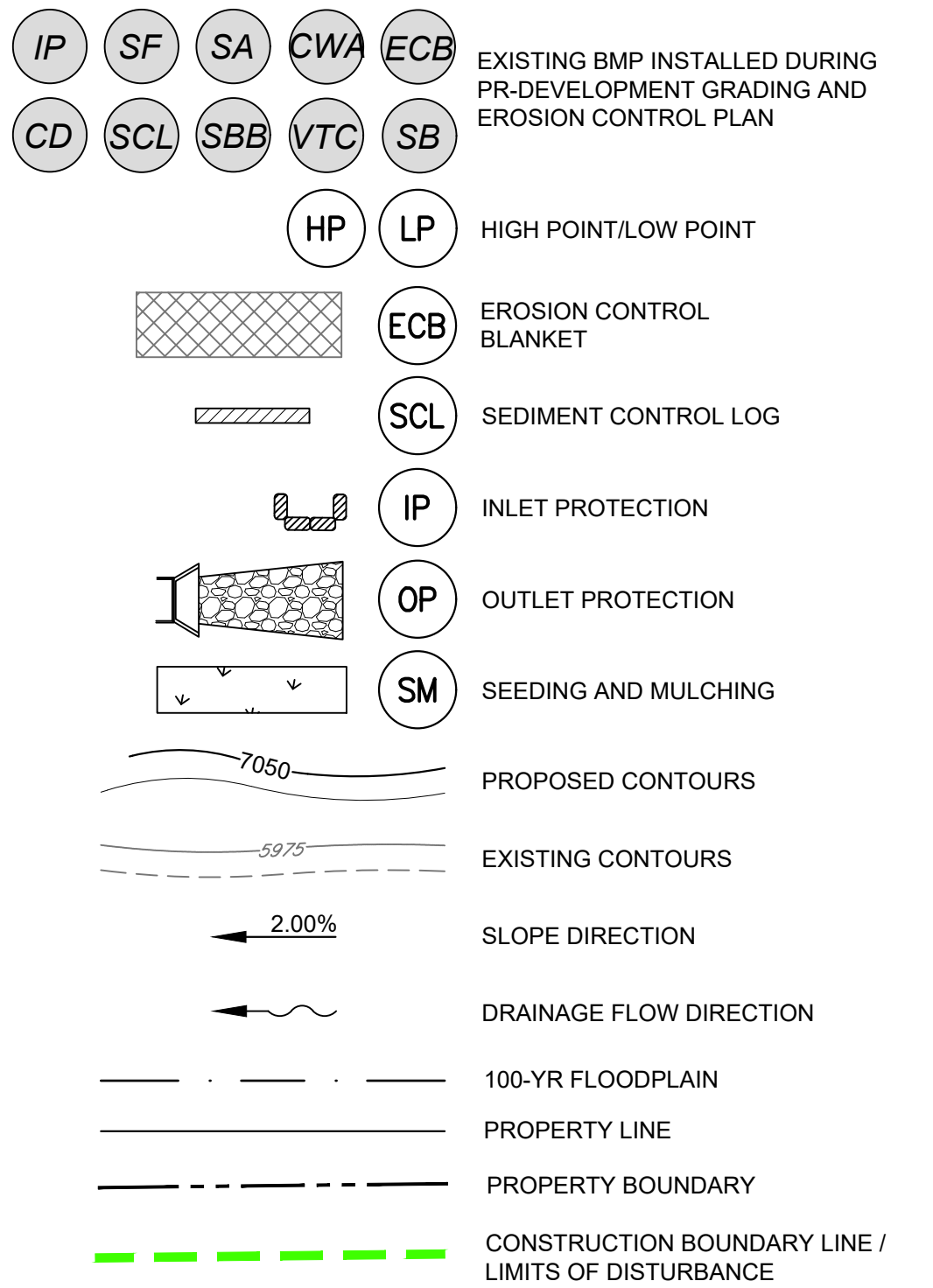
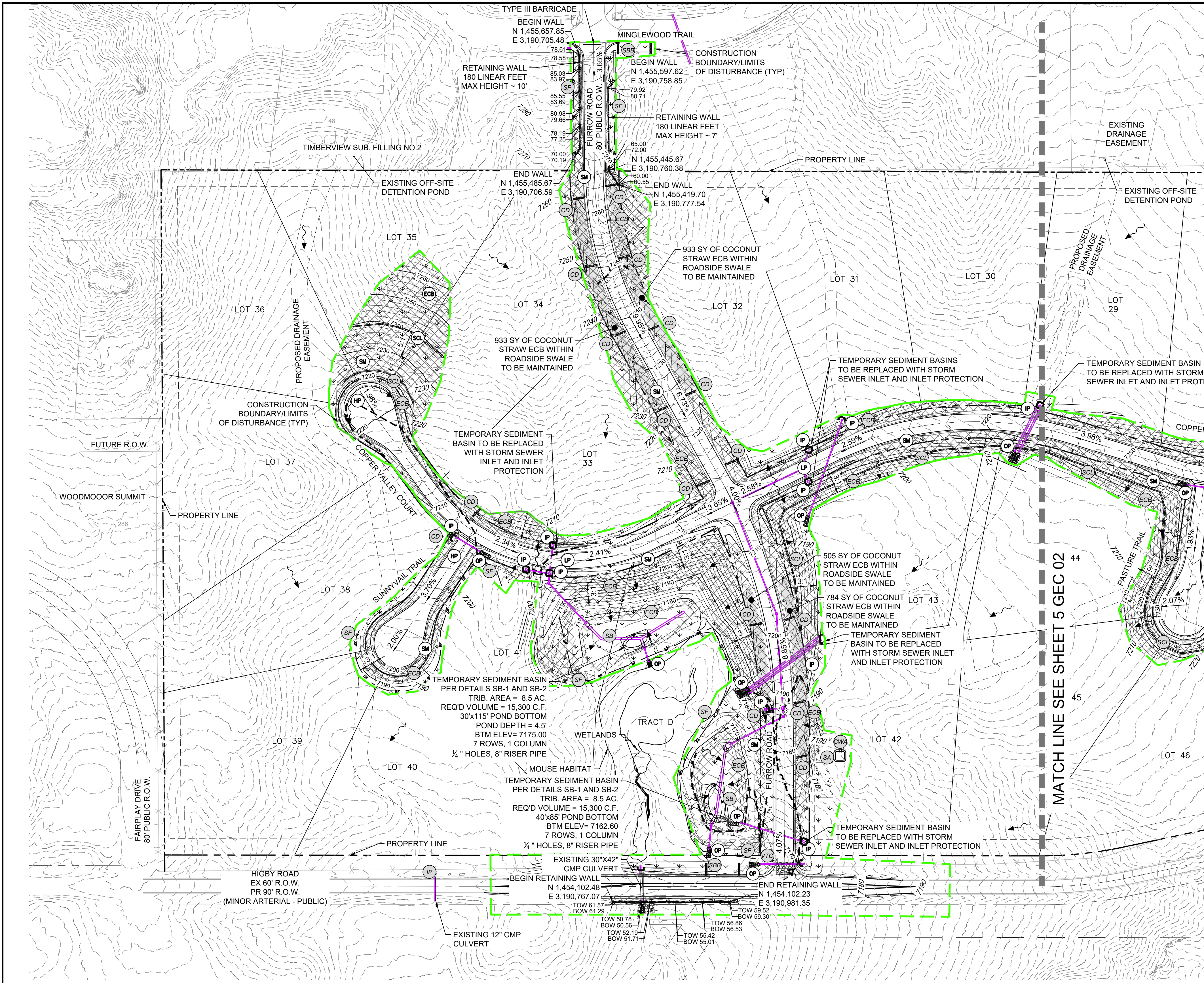
ASSY	ASSEMBLY	MAX	MAXIMUM
ASTM	AMERICAN SOCIETY OF TESTING AND MATERIALS	MH	MANHOLE
APPROX	APPROXIMATE or APPROXIMATELY	MIN	MINIMUM
AVE	AVENUE	MJ	MECHANICAL JOINT
AVG	AVERAGE	NTS	NOT TO SCALE
BLVD	BOULEVARD	O/S	OFFSET
BTM	BOTTOM	PR	PROPOSED
CDOT	COLORADO DEPARTMENT OF TRANSPORTATION	PC	POINT OF CURVATURE
CEN	CENTER	PCC	POINT OF COMPOUND CURVE
C or CL	CENTERLINE	PCR	POINT OF CURB RETURN
CFS	CUBIC FEET PER SECOND	R _c or P/L	PROPERTY LINE
CONC	CONCRETE	PRC	POINT OF REVERSE CURVE
CONST	CONSTRUCTION	PT	POINT OF TANGENCY
CONT	CONTINUOUS	PVC	POINT OF VERTICAL CURVE or POLYVINYL CHLORIDE
DIA	DIAMETER	PVI	POINT OF VERTICAL INTERSECTION
DWG	DRAWING	PVMT	PAVEMENT
EA	EACH	PVT	POINT OF VERTICAL TANGENT
EGL	ENERGY GRADE LINE	RCP	REINFORCED CONCRETE PIPE
ELEV or EL	ELEVATION	RED	REDUCER
ESMT	EASEMENT	REF	REFERENCE
EX or EXIST	EXISTING	REQ	REQUIRED
FES	FLARED END SECTION	REV	REVISION
F or FL	FLOWLINE	ROW	RIGHT-OF-WAY
FLG	FLANGE	RT	RIGHT
FT	FOOT/FEET	SD	STORM SEWER
HGL	HYDRAULIC GRADE LINE	ST	STREET
HP	HIGH POINT	STA	STATION
HORIZ	HORIZONTAL	STD	STANDARD
HCL	HORIZONTAL CONTROL LINE	SS	SANITARY SEWER
INV	INVERT	SW or S/W	SIDEWALK
	VERTICAL CURVE FACTOR	TAN	TANGENT
LF	LINEAR FEET	TBC	TOP BACK OF CURB
LN	LANE	TYP	TYPICAL
LP	LOW POINT	UG	UNDERGROUND
LT	LEFT	UTIL	UTILITY
		VERT	VERTICAL
		W	WIDTH
		w/	WITH

SYMBOLS

	PROPOSED CENTERLINE
	EXISTING PAVED ROAD
	EXISTING UNDERGROUND UTILITY
	PROPOSED UNDERGROUND UTILITY
	RIGHT OF WAY
	EASEMENT
	EXISTING CURB & GUTTER
	PROPOSED CURB & GUTTER
	EXISTING CONTOUR
	PROPOSED CONTOUR
	LIMITS OF CONSTRUCTION

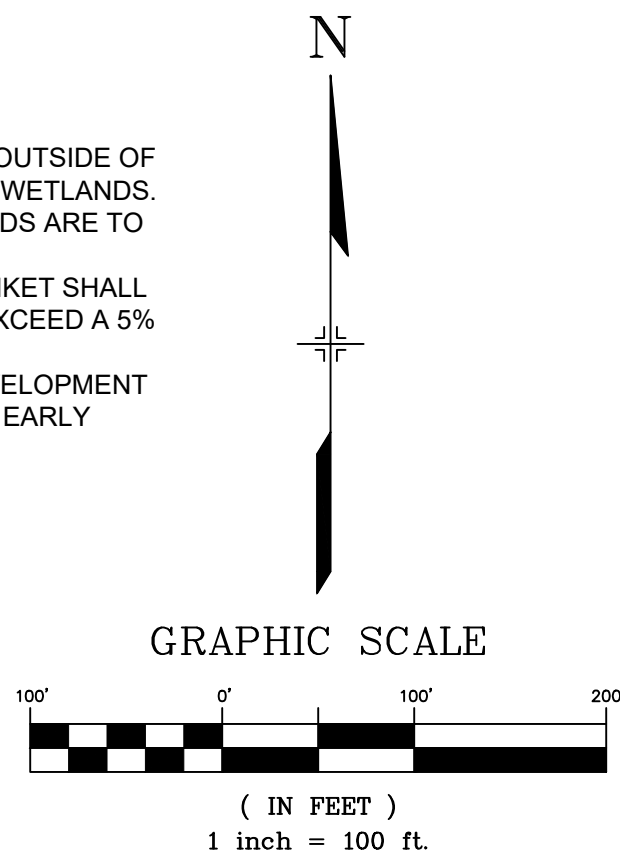


REFERENCE DRAWINGS X-Title-W-Final X-1105-EX SITE DESIGN	###	###	###	###	SHEET KEY BENCHMARK NGS T 294 ELEVATION - 7247.10' NAVD 88 BASIS OF BEARING: A LINE THAT IS 20' NORTH OF AND PARALLEL WITH THE EAST-WEST CETNER LINE OF SECTION 19, T11S, R66W, N89°56'32"W - 5135.84'. THE DIRECTION IS A GRID BEARING OF THE COLORADO STATION PLANE COORDINATE SYSTEM, CENTRAL ZONE, N.A.D. 1983. THE LINE IS MONUMENTED BY 5/8" DIAMETER REBAR, 18" IN LENGTH WITH 1-1/2" ALUMINUM CAPS "LWA PLS 28658"		OWNER: SYLVAN VISTA, INC. WILLIAM F. HEREBIC II, MANAGER 14160 GLENEAGLE DRIVE COLORADO SPRINGS, CO 80921 PREPARED BY: 	SEAL FOR AND ON BEHALF OF MATRIX DESIGN GROUP, INC. PROJECT No. 20.1105.004	GRANDWOOD RANCH						
	###	###	###	###					EL PASO COUNTY FINAL GRANDING & EROSION CONTROL PLANS						
	###	###	###	###					LEGEND AND ABBREVIATION NOTES						
	###	###	###	###											
	###	###	###	###											
	###	###	###	###											
	No.	DATE	DESCRIPTION						BY						
	COMPUTER FILE MANAGEMENT														
	FILE NAME: S:\20.1105.004 Grandwood Ranch\100 Dwg\104 Plan Sets\Construction Plans\GEC Plan\Final\GEN01.dwg														
	CTB FILE: ---														
PLOT DATE: September 21, 2020 11:07:39 AM															
THIS DRAWING IS CURRENT AS OF PLOT DATE AND MAY BE SUBJECT TO CHANGE.															



BMP SEQUENCING	
INITIAL	SILT FENCE, CONCRETE WASHOUT, VEHICLE TRACKING, TEMP SEDIMENT BASINS, INLET/OUTLET PROTECTION
INTERIM	CHECK DAMS, COCONUT STRAW ECB, STRAW BARRIERS, STOCKPILES, STAGING
FINAL	EROSION CONTROL BLANKETS, SEEDING & MULCHING

- CONSTRUCTION NOTES:
- ALL GRADING OPERATIONS SHALL REMAIN OUTSIDE OF DESIGNATED PREBLE MOUSE HABITAT AND WETLANDS. DESIGNATED MOUSE HABITAT AND WETLANDS ARE TO REMAIN UNDISTURBED.
 - COCONUT STRAW EROSION CONTROL BLANKET SHALL BE USED IN ALL ROADSIDE SWALES THAT EXCEED A 5% LONGITUDINAL SLOPE.
 - REFERENCE GRANDWOOD RANCH PRE-DEVELOPMENT GRADING & EROSION CONTROL PLANS FOR EARLY OVERLOT GRADING BMP'S.



REFERENCE DRAWINGS		SHEET KEY	
X-Title-W-Final	###	###	###
X-1105-PR-SITE	###	###	###
	###	###	###
	###	###	###
	###	###	###
	###	###	###
No.	DATE	DESCRIPTION	BY
		REVISIONS	
COMPUTER FILE MANAGEMENT			
FILE NAME: S:\20.1105.004 Grandwood Ranch\100 Dwg\104 Plan Sets\Construction Plans\GEC Plan\Final\GEC01.dwg			
CTB FILE:			
PLOT DATE: September 21, 2020 11:07:55 AM			
THIS DRAWING IS CURRENT AS OF PLOT DATE AND MAY BE SUBJECT TO CHANGE.			

BENCHMARK	
NGS T 294 ELEVATION - 7247.10' NAVD 88	
BASIS OF BEARING:	
A LINE THAT IS 20' NORTH OF AND PARALLEL WITH THE EAST-WEST CETER LINE OF SECTION 19, T11S, R66W, N89°56'32" W - 5135.84'. THE DIRECTION IS A GRID BEARING OF THE COLORADO STATION PLANE COORDINATE SYSTEM, CENTRAL ZONE, N.A.D. 1983. THE LINE IS MONUMENTED BY 5/8" DIAMETER REBAR, 18" IN LENGTH WITH 1-1/2" ALUMINUM CAPS "LWA PLS 28658"	

OWNER: SYLVAN VISTA, INC. WILLIAM F. HEREBIC II, MANAGER 14160 GLENEAGLE DRIVE COLORADO SPRINGS, CO 80921	PREPARED BY:
Matrix	

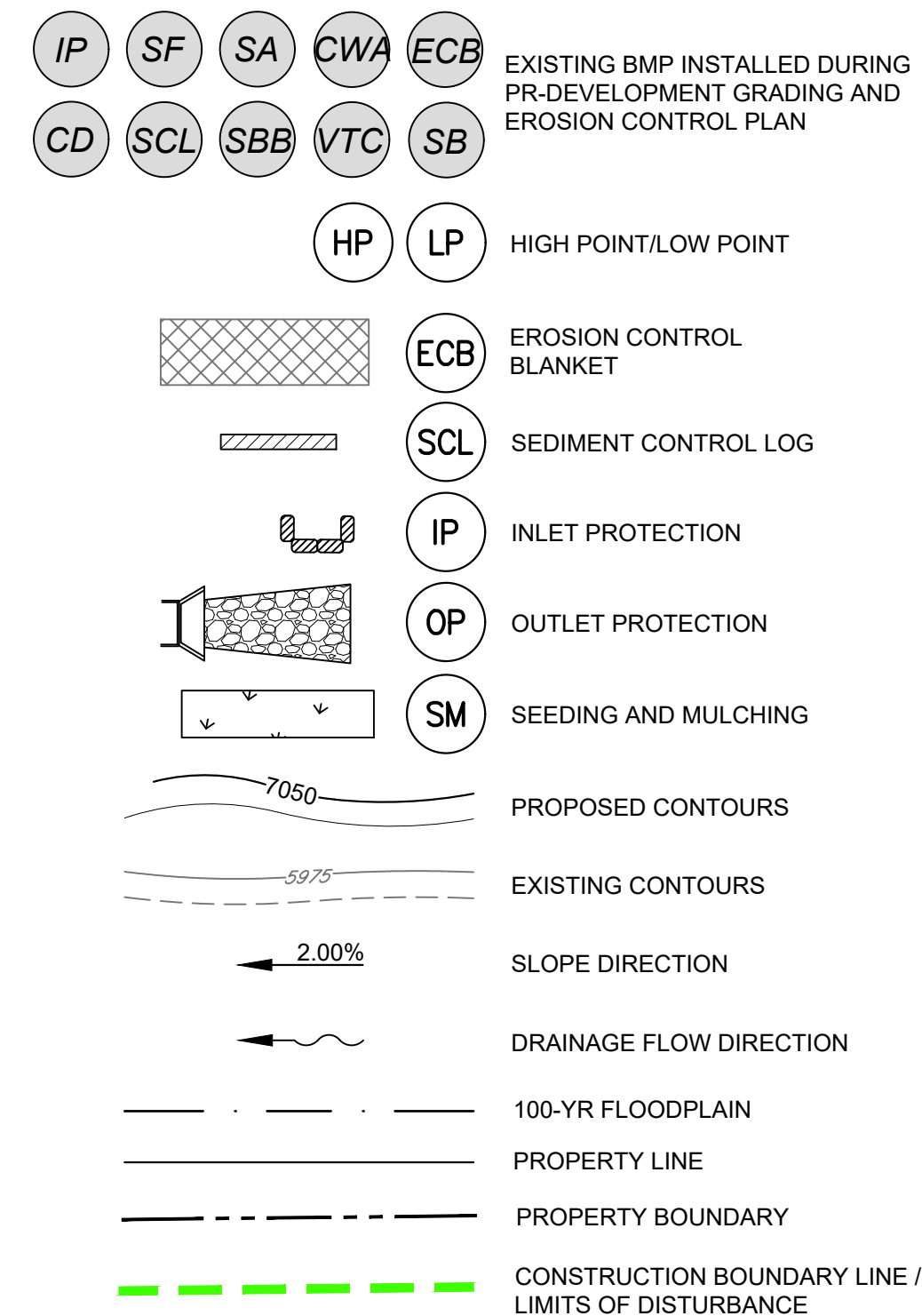
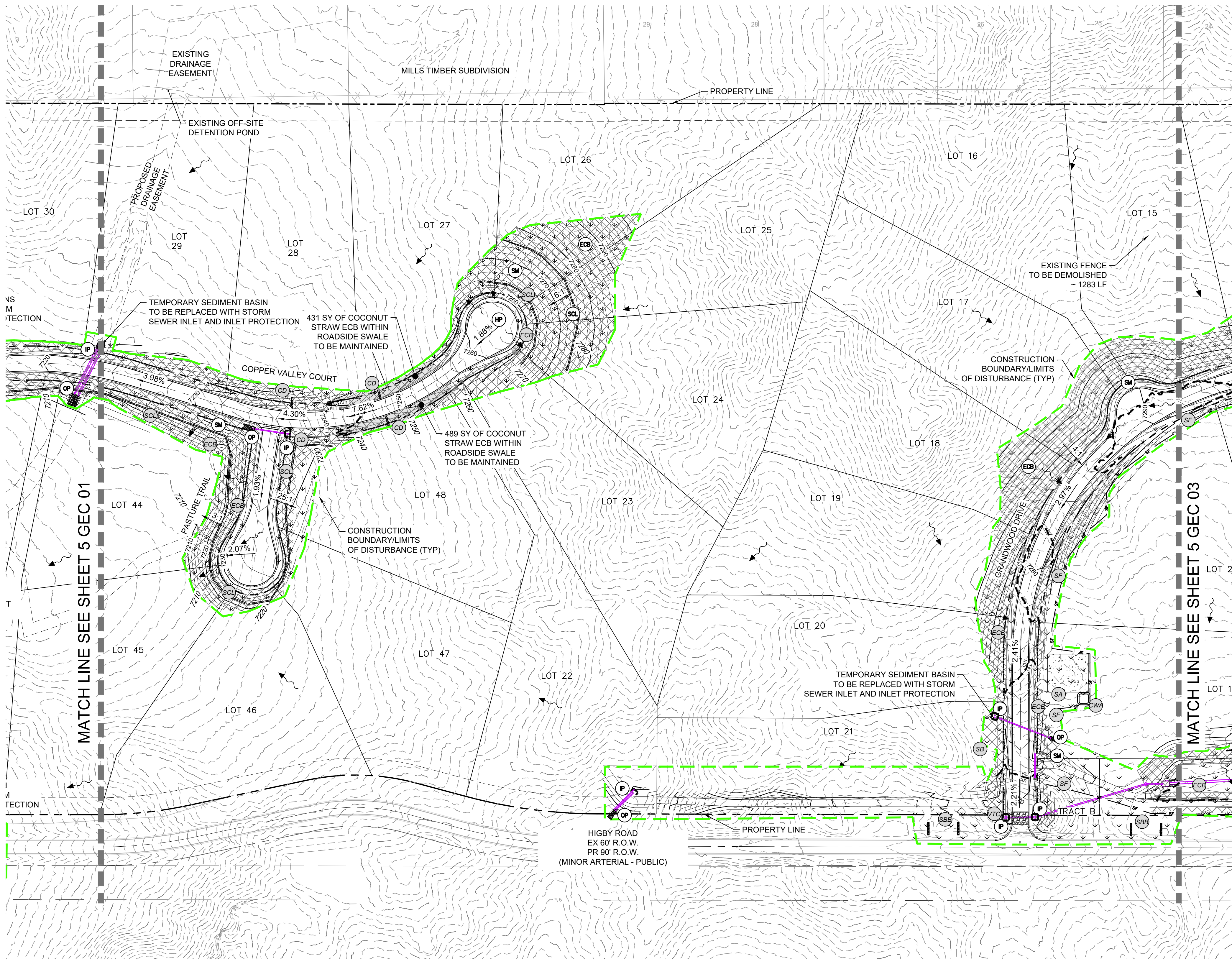
SEAL	FOR AND ON BEHALF OF MATRIX DESIGN GROUP, INC. PROJECT No. 20.1105.004
------	--

GRANDWOOD RANCH			
EL PASO COUNTY			
FINAL GRADING & EROSION CONTROL PLANS			
GRADING & EROSION CONTROL PLAN			
DESIGNED BY: CP	SCALE: 1"=100'	DATE ISSUED: SEPTEMBER, 2020	DRAWING No. GEC01
DRAWN BY: TS	HORIZ: N/A	SHEET 4 OF 9	
CHECKED BY: NS	VERT: N/A		



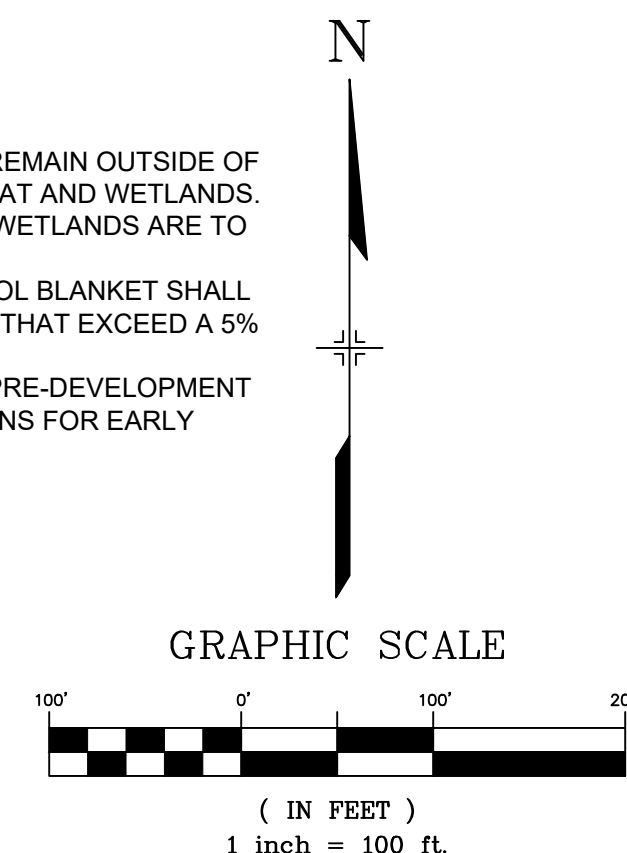
Know what's below.
Call before you dig.

5



BMP SEQUENCING	
INITIAL	SILT FENCE, CONCRETE WASHOUT, VEHICLE TRACKING, TEMP SEDIMENT BASINS, INLET/OUTLET PROTECTION
INTERIM	CHECK DAMS, COCONUT WASHOUT, STRAW BARRIERS, STOCKPILES, STAGING
FINAL	EROSION CONTROL BLANKETS, SEEDING & MULCHING

- CONSTRUCTION NOTES :
- ALL GRADING OPERATIONS SHALL REMAIN OUTSIDE OF DESIGNATED PREBLE MOUSE HABITAT AND WETLANDS. DESIGNATED MOUSE HABITAT AND WETLANDS ARE TO REMAIN UNDISTURBED.
 - COCONUT STRAW EROSION CONTROL BLANKET SHALL BE USED IN ALL ROADSIDE SWALES THAT EXCEED A 5% LONGITUDINAL SLOPE.
 - REFERENCE GRANDWOOD RANCH PRE-DEVELOPMENT GRADING & EROSION CONTROL PLANS FOR EARLY OVERLOT GRADING BMP'S.



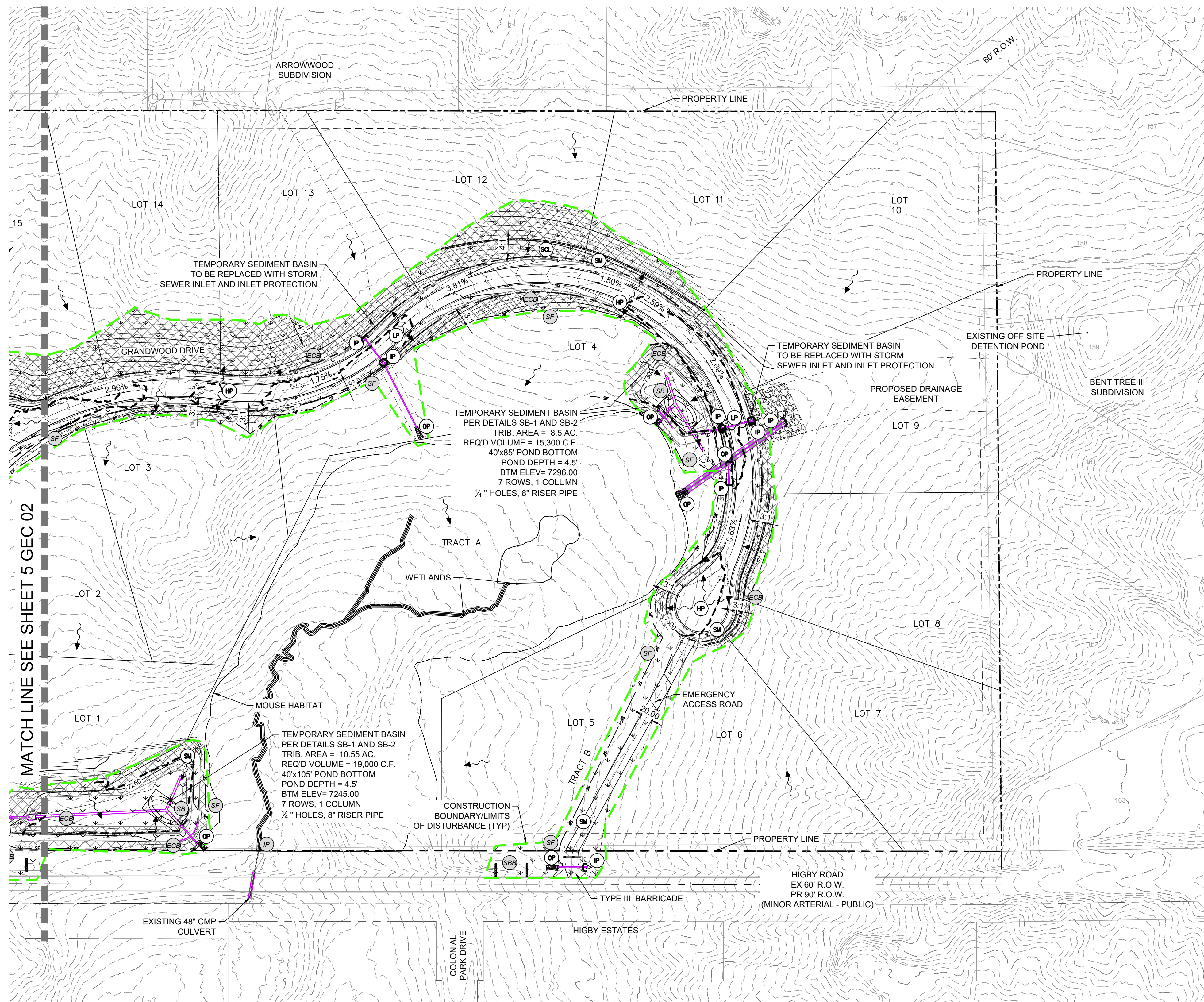
REFERENCE DRAWINGS			SHEET KEY
X-Title-W-Final	###	###	
X-1105-PR-SITE	###	###	###
	###	###	###
	###	###	###
	###	###	###
	###	###	###
No.	DATE	DESCRIPTION	BY
COMPUTER FILE MANAGEMENT			
FILE NAME: S:\20.1105.004 Grandwood Ranch\100 Dwg\104 Plan Sets\Construction Plans\GEC Plan\Final\GEC01.dwg			
CTB FILE:			
PLOT DATE: September 21, 2020 11:08:02 AM			
THIS DRAWING IS CURRENT AS OF PLOT DATE AND MAY BE SUBJECT TO CHANGE.			

BENCHMARK	
NGS T 294 ELEVATION - 7247.10' NAVD 88	
BASIS OF BEARING:	
A LINE THAT IS 20' NORTH OF AND PARALLEL WITH THE EAST-WEST CETER LINE OF SECTION 19, T11S, R66W, N89°56:32"W - 5135.84'. THE DIRECTION IS A GRID BEARING OF THE COLORADO STATION PLANE COORDINATE SYSTEM, CENTRAL ZONE, N.A.D. 1983. THE LINE IS MONUMENTED BY 5/8" DIAMETER REBAR, 18" IN LENGTH WITH 1-1/2" ALUMINUM CAPS "LWA PLS 28658"	

OWNER:
SYLVAN VISTA, INC.
WILLIAM F. HEREBIC II, MANAGER
14160 GLENEAGLE DRIVE
COLORADO SPRINGS, CO 80921
PREPARED BY:
Matrix

SEAL
FOR AND ON BEHALF OF
MATRIX DESIGN GROUP, INC.
PROJECT No. 20.1105.004

GRANDWOOD RANCH			
EL PASO COUNTY			
FINAL GRADING & EROSION CONTROL PLANS			
GRADING & EROSION CONTROL PLAN			
DESIGNED BY:	CP	SCALE	DATE ISSUED: SEPTEMBER, 2020
DRAWN BY:	TS	HORIZ 1" = 100'	DRAWING No.
CHECKED BY:	NS	VERT. N/A	SHEET
			5 OF 9
			GEC02



EXISTING BMP INSTALLED DURING PR-DEVELOPMENT GRADING AND EROSION CONTROL PLAN

IP SF SA CWA ECB
CD SCL SBB VTC SB

HP LP HIGH POINT/LOW POINT

ECB EROSION CONTROL BLANKET

SCL SEDIMENT CONTROL LOG

IP INLET PROTECTION

OP OUTLET PROTECTION

SM SEEDING AND MULCHING

PROPOSED CONTOURS

EXISTING CONTOURS

SLOPE DIRECTION

DRAINAGE FLOW DIRECTION

100-YR FLOODPLAIN

PROPERTY LINE

PROPERTY BOUNDARY

CONSTRUCTION BOUNDARY LINE / LIMITS OF DISTURBANCE

BMP SEQUENCING	
INITIAL	SILT FENCE, CONCRETE WASHOUT, VEHICLE TRACKING, TEMP SEDIMENT BASINS, INLET/OUTLET PROTECTION
INTERIM	CHECK DAMS, COCONUT WASHOUT, STRAW BARRIERS, STOCKPILES, STAGING
FINAL	EROSION CONTROL BLANKETS, SEEDING & MULCHING

CONSTRUCTION NOTES:

- ALL GRADING OPERATIONS SHALL REMAIN OUTSIDE OF DESIGNATED PREBLE MOUSE HABITAT AND WETLANDS. DESIGNATED MOUSE HABITAT AND WETLANDS ARE TO REMAIN UNDISTURBED.
- COCONUT STRAW EROSION CONTROL BLANKET SHALL BE USED IN ALL ROADSIDE SWALES THAT EXCEED A 5% LONGITUDINAL SLOPE.
- REFERENCE GRANDWOOD RANCH PRE-DEVELOPMENT GRADING & EROSION CONTROL PLANS FOR EARLY OVERLOT GRADING BMP'S.

N

GRAPHIC SCALE



(IN FEET)
1 inch = 100 ft.

REFERENCE DRAWINGS			SHEET KEY
X-Title-W-Final	###	###	
X-1105-PR-SITE	###	###	###
	###	###	###
	###	###	###
	###	###	###
	###	###	###
No.	DATE	DESCRIPTION	BY
REVISIONS			
COMPUTER FILE MANAGEMENT			
FILE NAME: S:\20.1105.004 Grandwood Ranch\100 Dwg\104 Plan Sets\Construction Plans\GEC Plan\Final\GEC01.dwg			
CTB FILE:			
PLOT DATE: September 29, 2020 8:20:14 PM			
THIS DRAWING IS CURRENT AS OF PLOT DATE AND MAY BE SUBJECT TO CHANGE.			

BENCHMARK
NGS T 294 ELEVATION - 7247.10' NAVD 88

BASIS OF BEARING:

A LINE THAT IS 20° NORTH OF AND PARALLEL WITH THE EAST-WEST CENTER LINE OF SECTION 19, T11S, R66W, N89°56'32"W - 5135.84'. THE DIRECTION IS A GRID BEARING OF THE COLORADO STATION PLANE COORDINATE SYSTEM, CENTRAL ZONE, N.A.D. 1983. THE LINE IS MONUMENTED BY 5/8" DIAMETER REBAR, 18" IN LENGTH WITH 1-1/2" ALUMINUM CAPS "LWA PLS 28658"

OWNER:
SYLVAN VISTA, INC.
WILLIAM F. HEREBIC II, MANAGER
14160 GLENEAGLE DRIVE
COLORADO SPRINGS, CO 80921

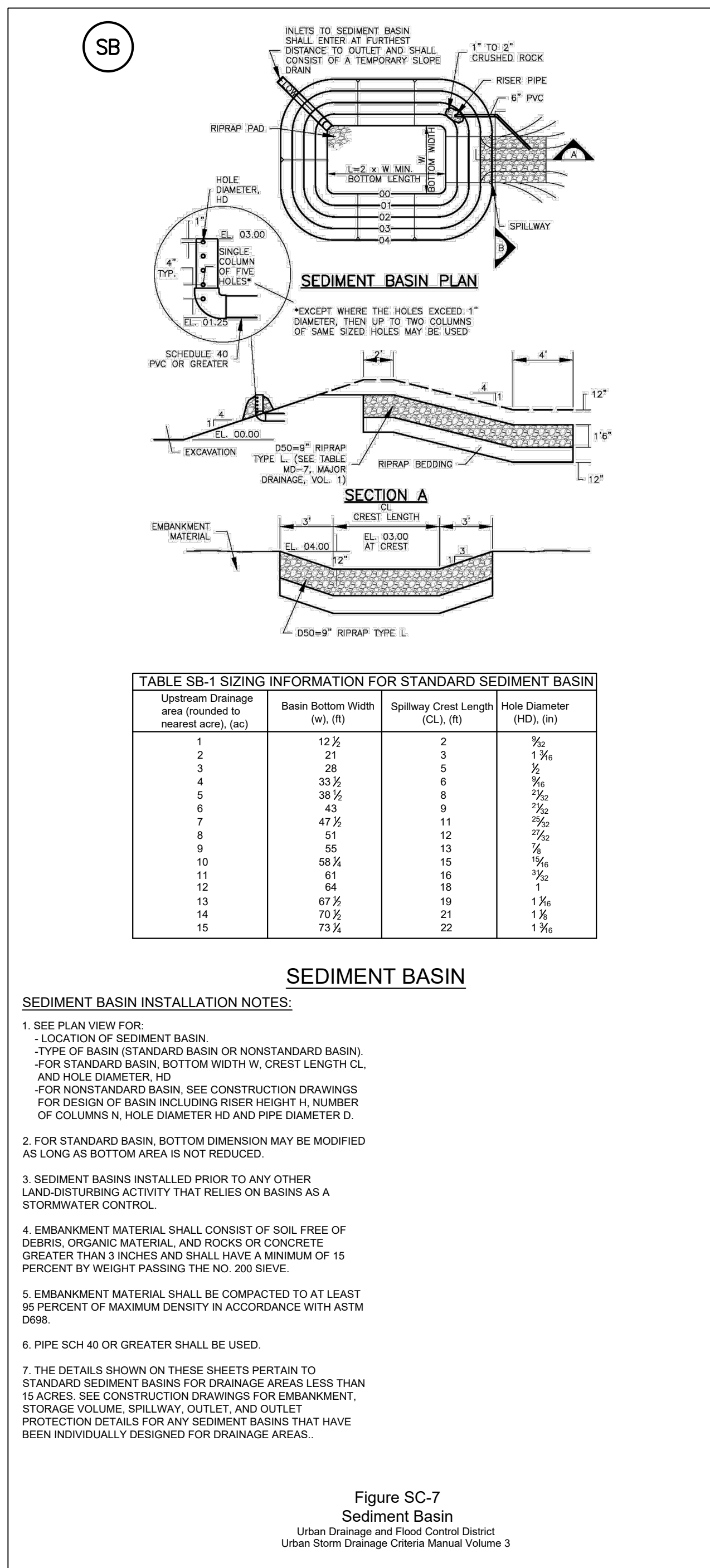
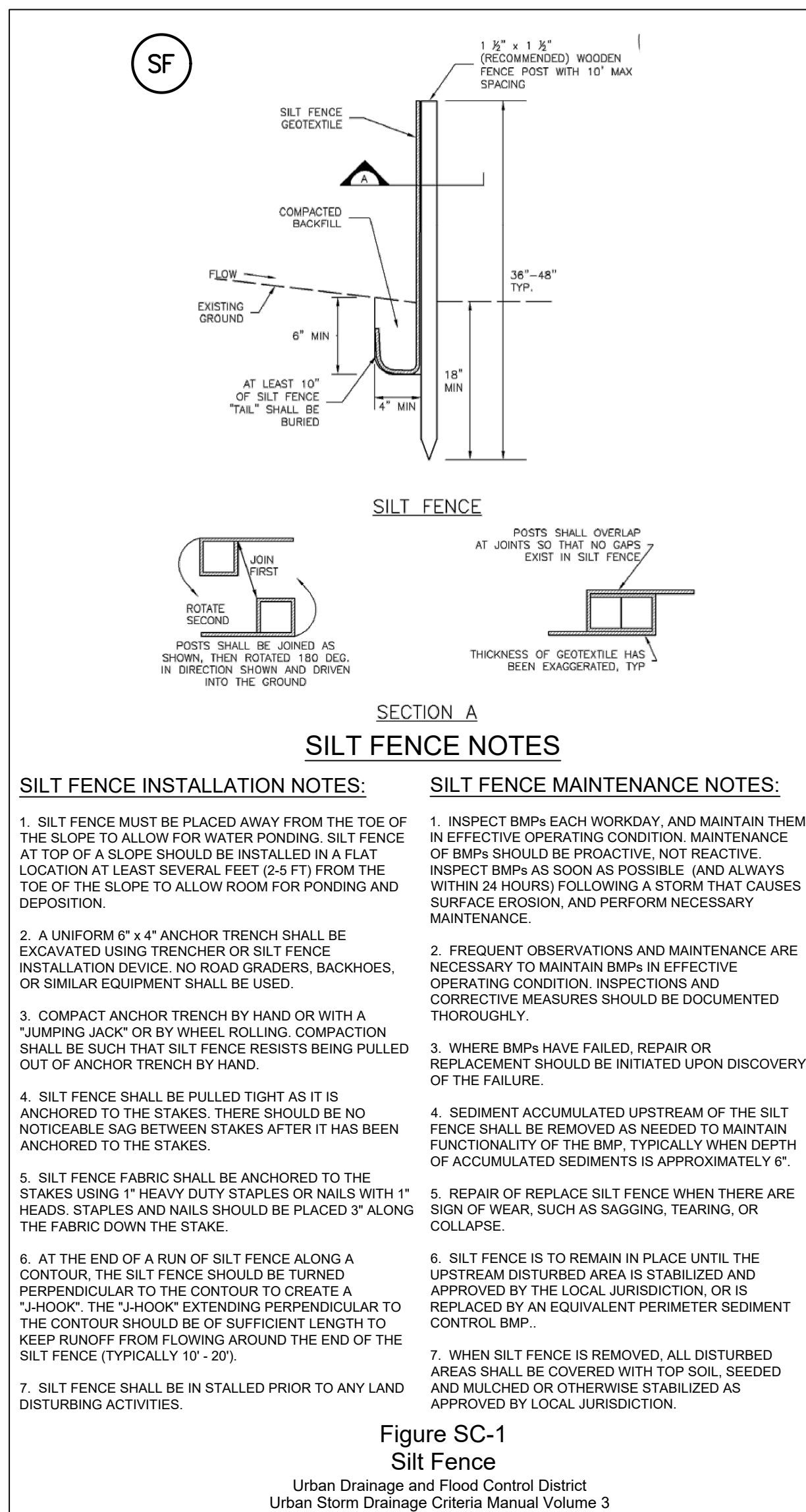
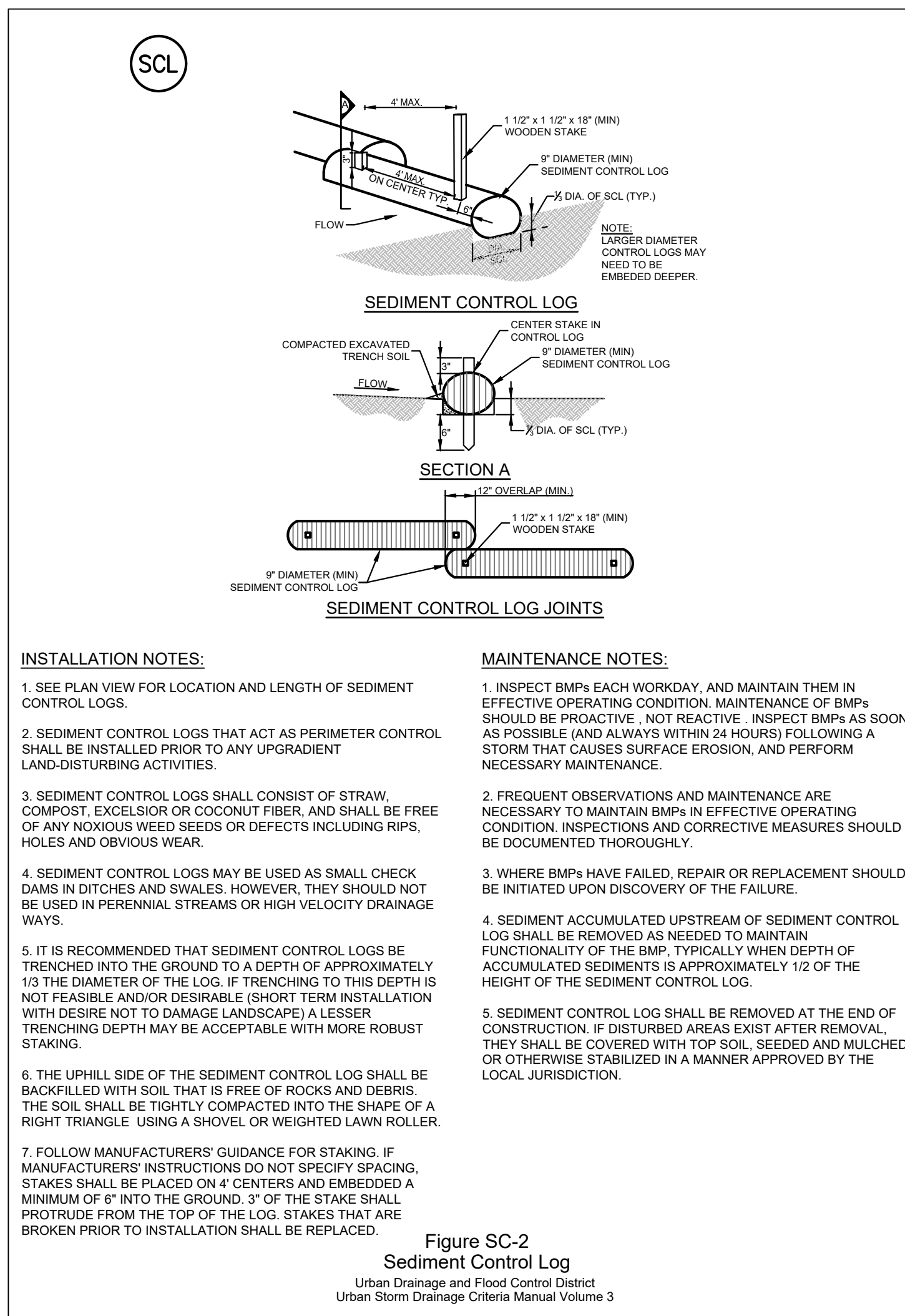
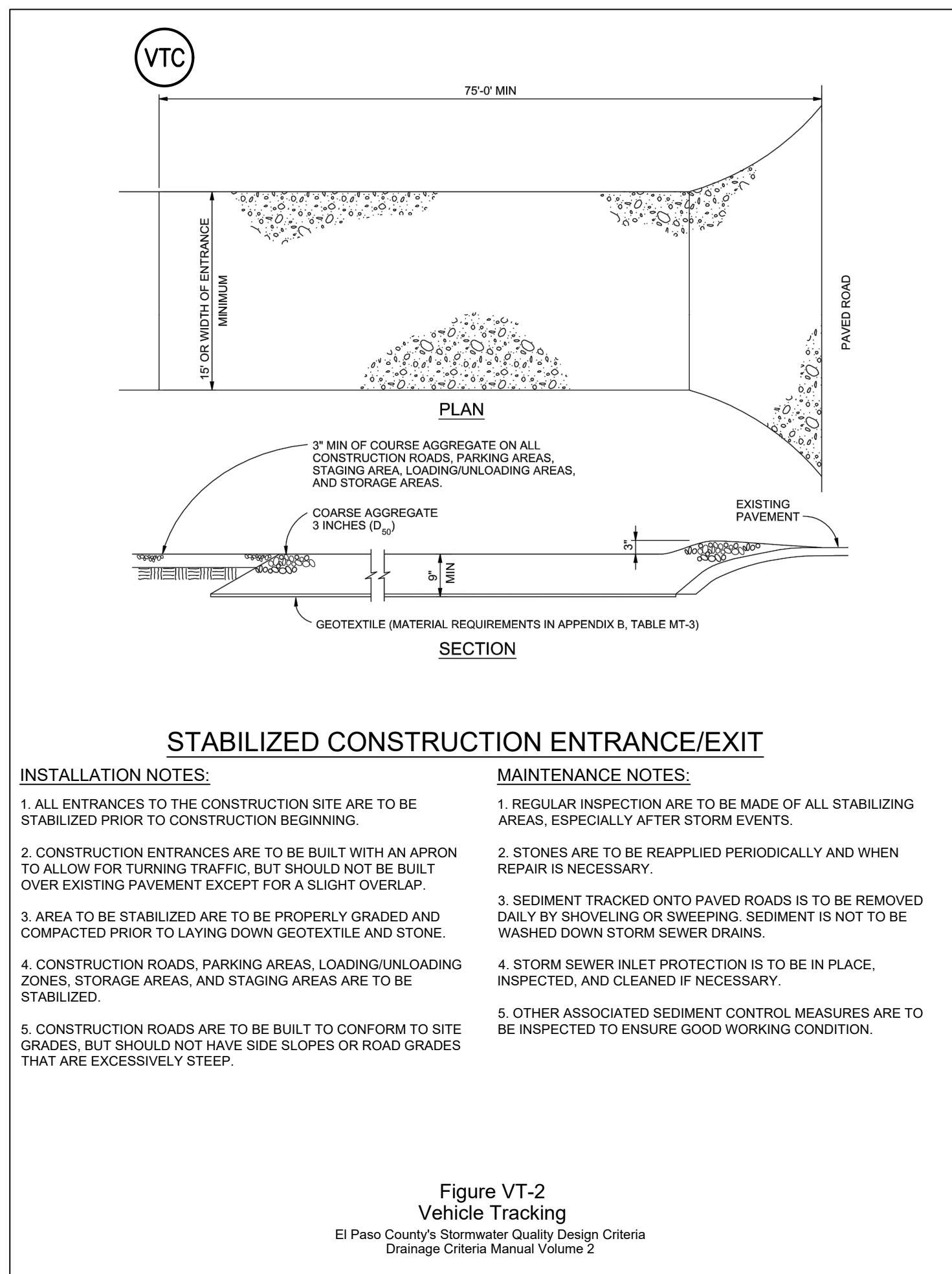
PREPARED BY:



SEAL

FOR AND ON BEHALF OF
MATRIX DESIGN GROUP, INC.
PROJECT No. 20.1105.004

GRANDWOOD RANCH			
EL PASO COUNTY FINAL GRADING & EROSION CONTROL PLANS			
GRADING & EROSION CONTROL PLAN			
DESIGNED BY:	CP	SCALE	DATE ISSUED: SEPTEMBER, 2020
DRAWN BY:	TS	HORIZ 1" = 100'	DRAWING No.
CHECKED BY:	NS	VERT. N/A	SHEET
			6 OF 9
			GEC03

Table 14-10. Recommended Seed Mix for Transition Areas¹

Common Name (Variety)	Scientific Name	Growth Season	Growth Form	Seeds/Lb	Lbs PLS/Acre Drilled	Lbs PLS/Acre Broadcast or Hydrosseeded
Sheep fescue (Dura)	<i>Festuca ovina</i>	Cool	Bunch	680,000	1.3	2.6
Western wheatgrass (Armba)	<i>Pascopyrum smithii</i>	Cool	Sod	110,000	7.9	15.8
Alkali sacaton	<i>Spolobolus airoides</i>	Warm	Bunch	1,758,000	0.5	1.0
Slender wheatgrass	<i>Elymus trachycaulis</i>	Cool	Bunch	159,000	5.5	11.0
Canadian bluegrass (Ruebens)	<i>Poa compressa</i>	Cool	Sod	2,500,000	0.3	0.6
Switchgrass (Pathfinder)	<i>Panicum virgatum</i>	Warm	Sod/Bunch	389,000	1.3	2.6
Annual rye	<i>Lolium multiflorum</i>	Cool	Cover crop	227,000	10.0	20.0
			TOTAL	26.8	53.6	
Wildflowers						
Blanket flower	<i>Faillardia aristata</i>	---	---	132,000	0.25	0.50
Prairie coneflower	<i>Ratibida columnaris</i>	---	---	1,230,000	0.20	0.40
Purple prairie clover	<i>Petalostemum purpurea</i>	---	---	210,000	0.20	0.40
Gayfeather	<i>Liatris punctata</i>	---	---	138,000	0.06	0.12
Flax	<i>Linum lewisii</i>	---	---	293,000	0.20	0.40
Penstemon	<i>Penstemon strictus</i>	---	---	592,000	0.20	0.40
Yarrow	<i>Achillea millefolium</i>	---	---	2,770,000	0.03	0.06
			TOTAL	1.14	2.28	

¹For side slopes or between wet and dry areas.
²Substitute 1.7 lbs PLS/acre of inland saltgrass (*Distichlis spicata*) in salty soils.

SEED MIX NOTES:

A MIXTURE DEVELOPED FOR ELEVATIONS 3,000 TO 8,000 FEET TO PROVIDE NATURAL COVER UNDER DRYLAND CONDITIONS. CONTAINS BOTH COOL AND WARM SEASON GRASSES ADAPTED TO THE WESTERN GREAT PLAINS AND SOUTHWESTERN REGION. HAS EXCELLENT COLD AND DROUGHT TOLERANCE. GOOD FOR SOIL STABILIZATION ON POOR SOILS.

CHARACTERISTICS:

GROWS 30-60 INCHES WITH AVERAGE RAINFALL.

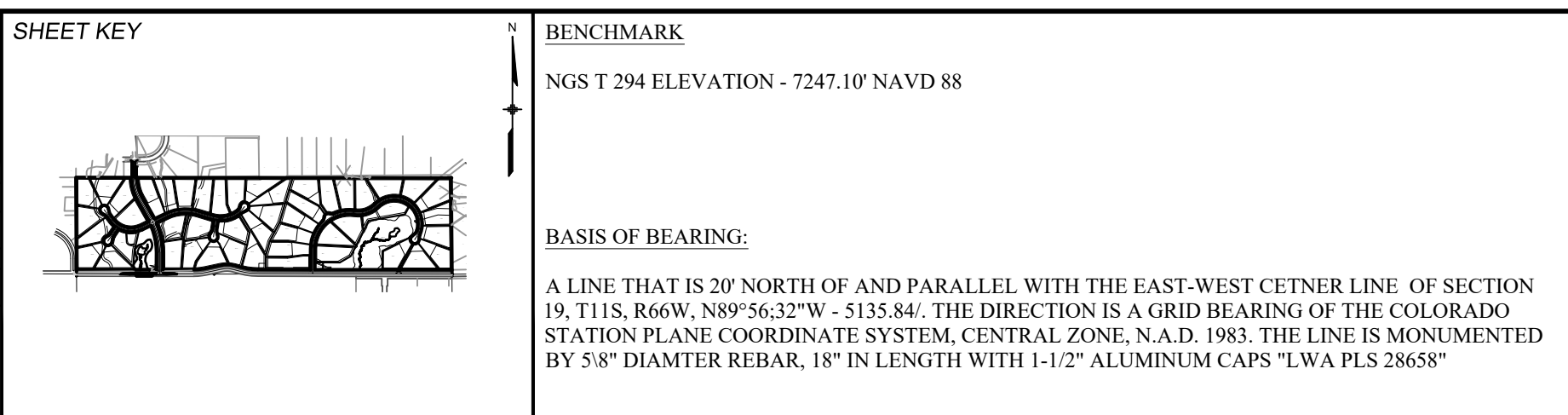
SEEDING RATE:

BROADCAST: 20-25 LBS/ACRE
 DRILLED: 15-20 LBS/ACRE
 OVERSEEDING
 BROADCAST: 10-15 LBS/ACRE
 DRILLED: 5-10 LBS/ACRE

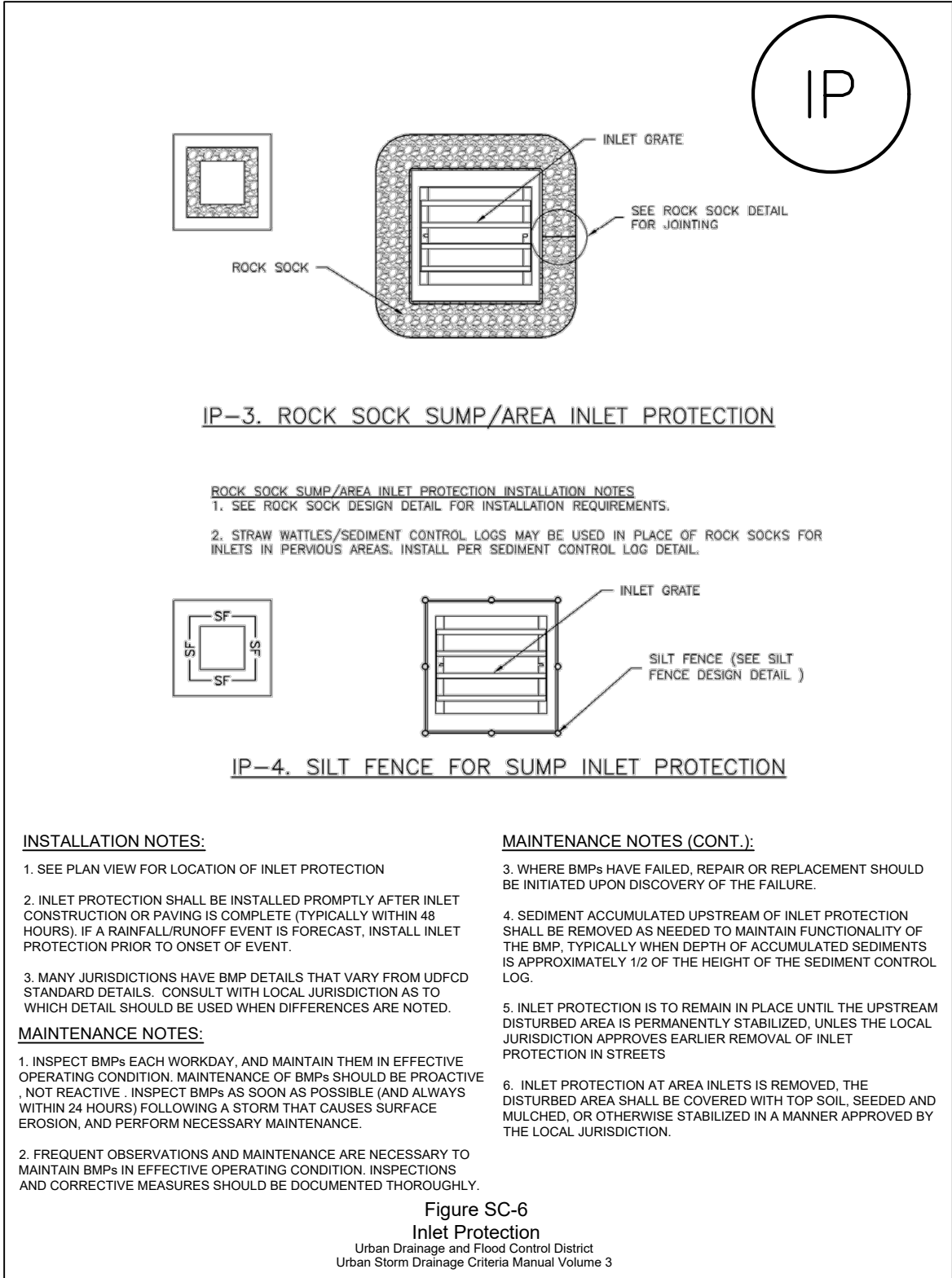
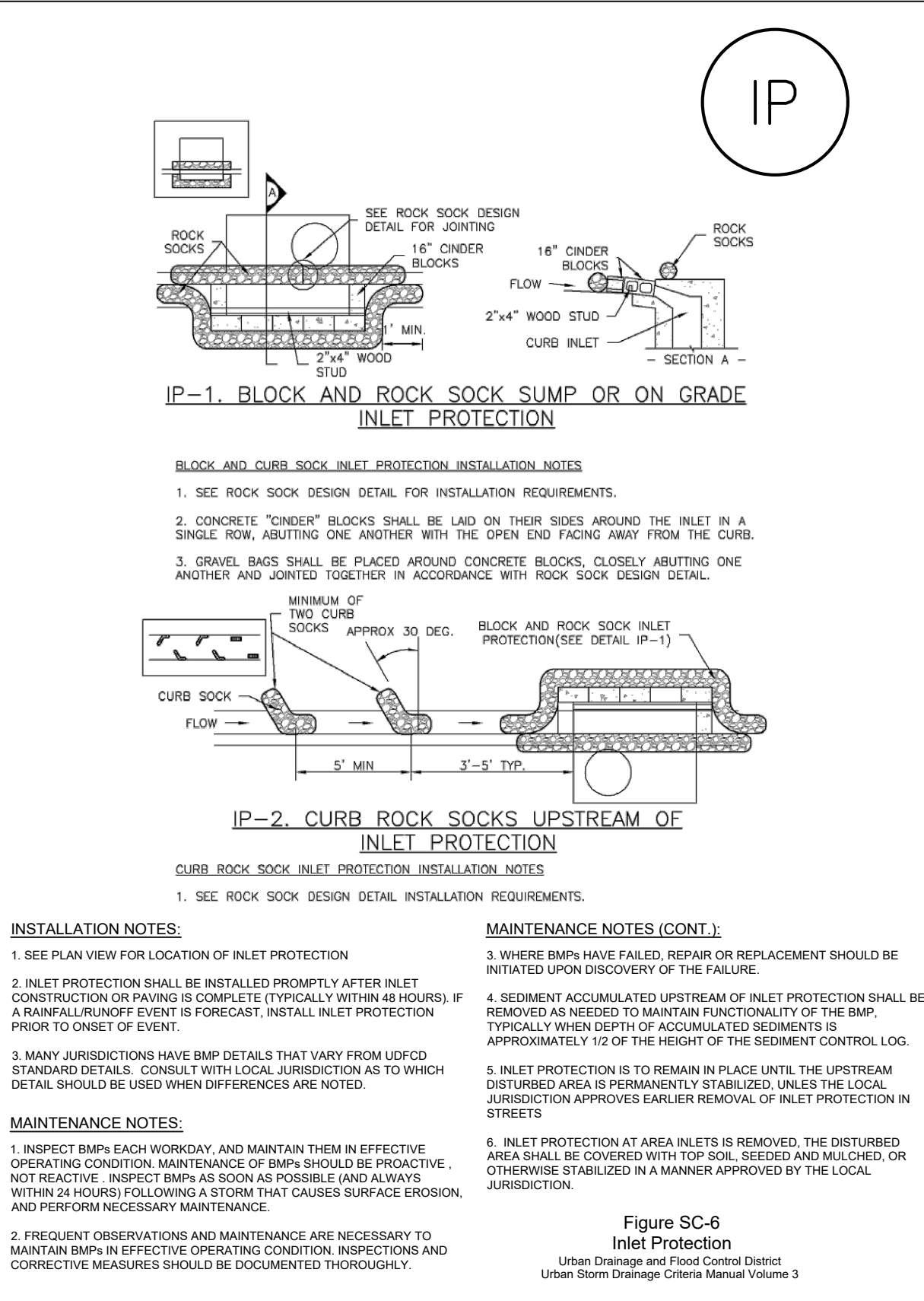
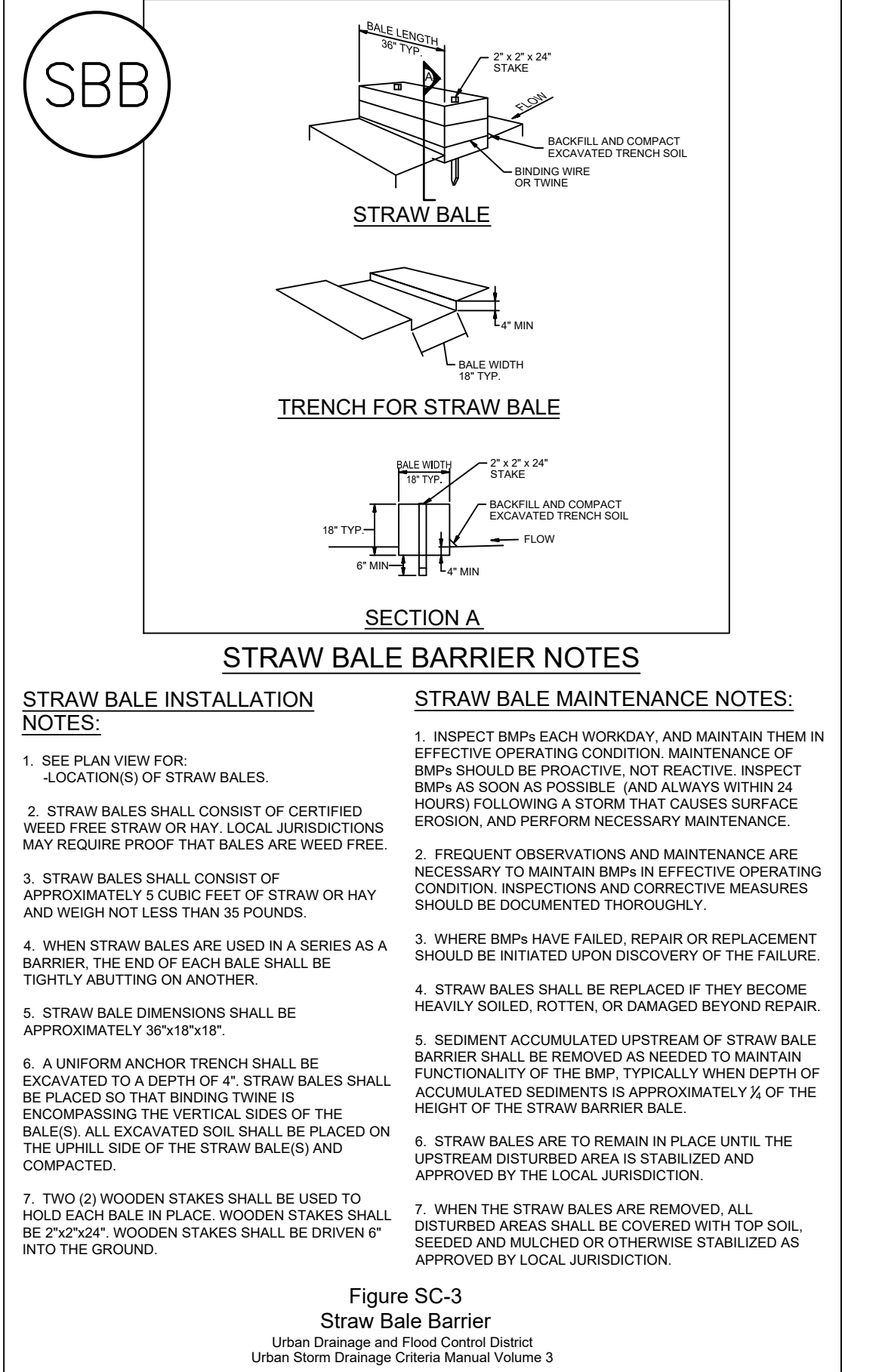
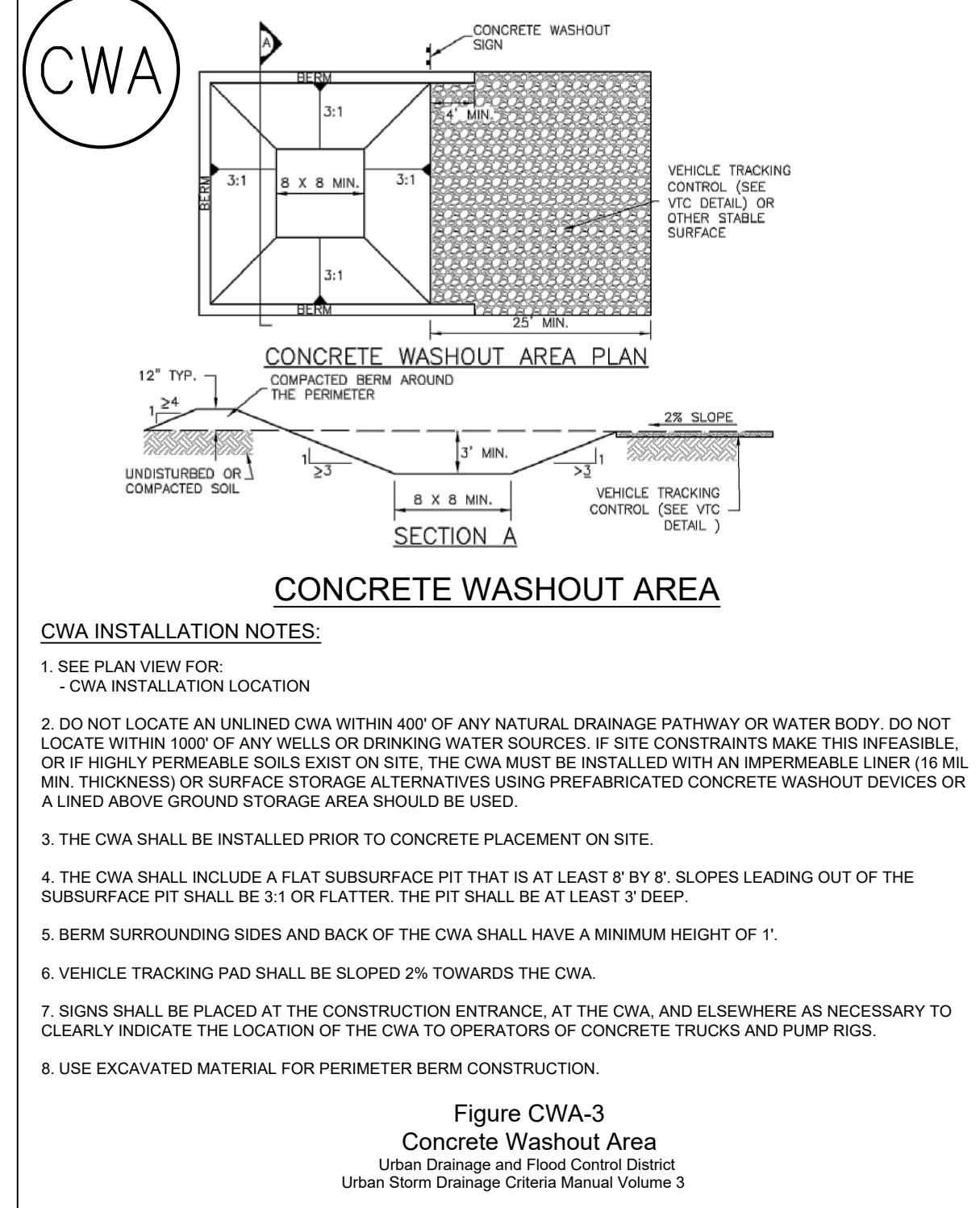
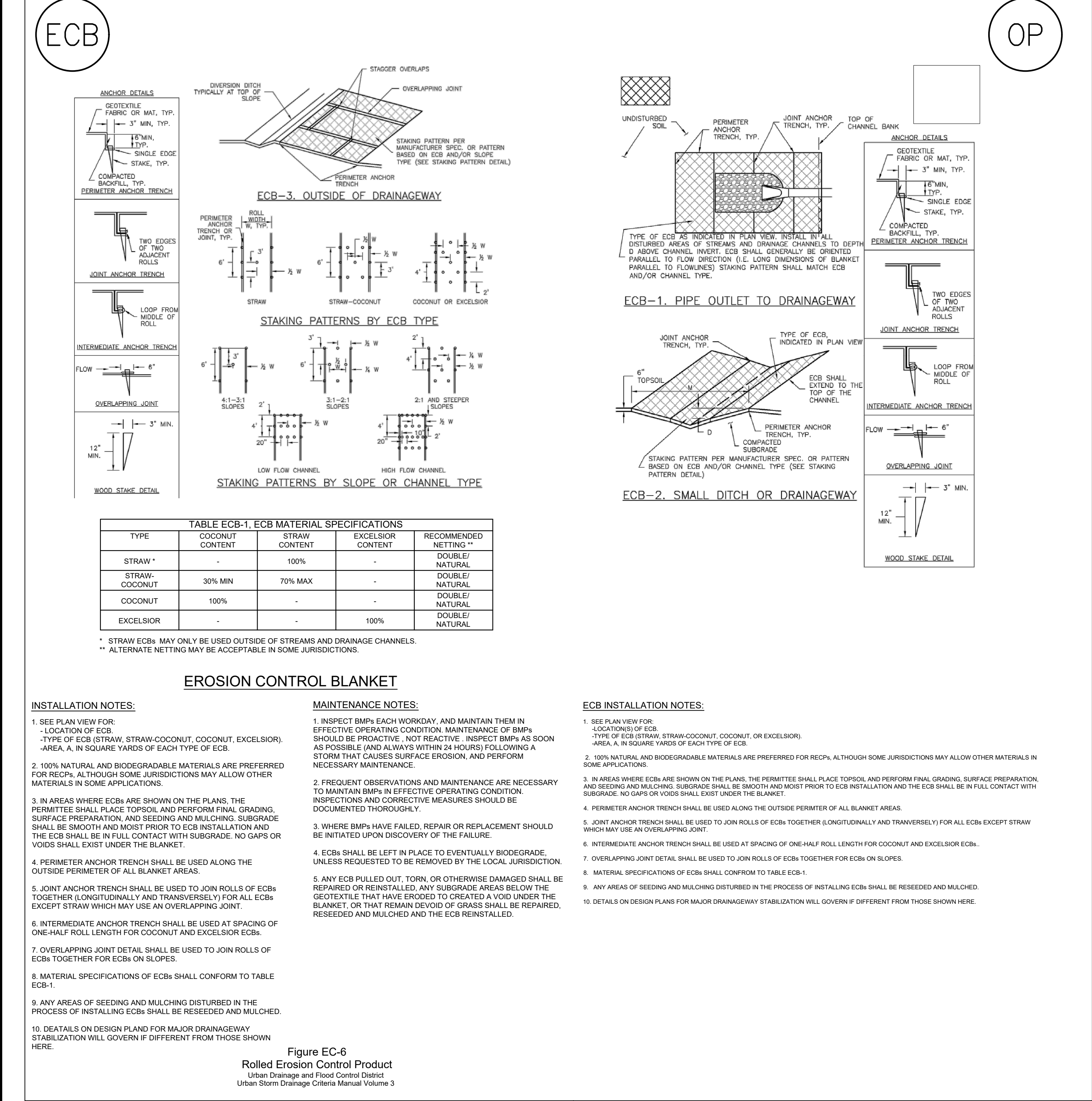
MIX CONTAINS:

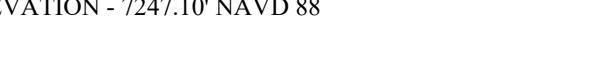



KIND AND VARIETY:	PURE	GERM	ORIGIN
ANNUAL RYEGRASS	15.72	97	OR
SLENDER WHEATGRASS	14.75	98	WA
CRESTED WHEATGRASS	10.91	96	SD
MOUNTAIN BROME	9.91	97	WY
CANADA BLUEGRASS	9.80	87	WA
HARD FESCUE	9.78	86	MT
SIDE OATS GRAMA	5.78	80	TX
SWITCHGRASS	4.99	93	MN
BIG BLUESTEM	4.55	95	KS
BLUE GRAMA	2.37	95	MN
SAND DROPSEED	0.99	95	CO

REFERENCE DRAWINGS	####	####	####	####
	####	####	####	####
	####	####	####	####
	####	####	####	####
	####	####	####	####
	####	####	####	####
	####	####	####	####
	####	####	####	####
	####	####	####	####
	No.	DATE	DESCRIPTION	
REVISIONS				
COMPUTER FILE MANAGEMENT				
FILE NAME: S:\20.1105.004 Grandwood Ranch\100 Dwg\104 Plan Sets\Construction Plans\GEC Plan\Final\ECN01.dwg				
CTB FILE:				
PLOT DATE: September 21, 2020 11:08:16 AM				
THIS DRAWING IS CURRENT AS OF PLOT DATE AND MAY BE SUBJECT TO CHANGE.				



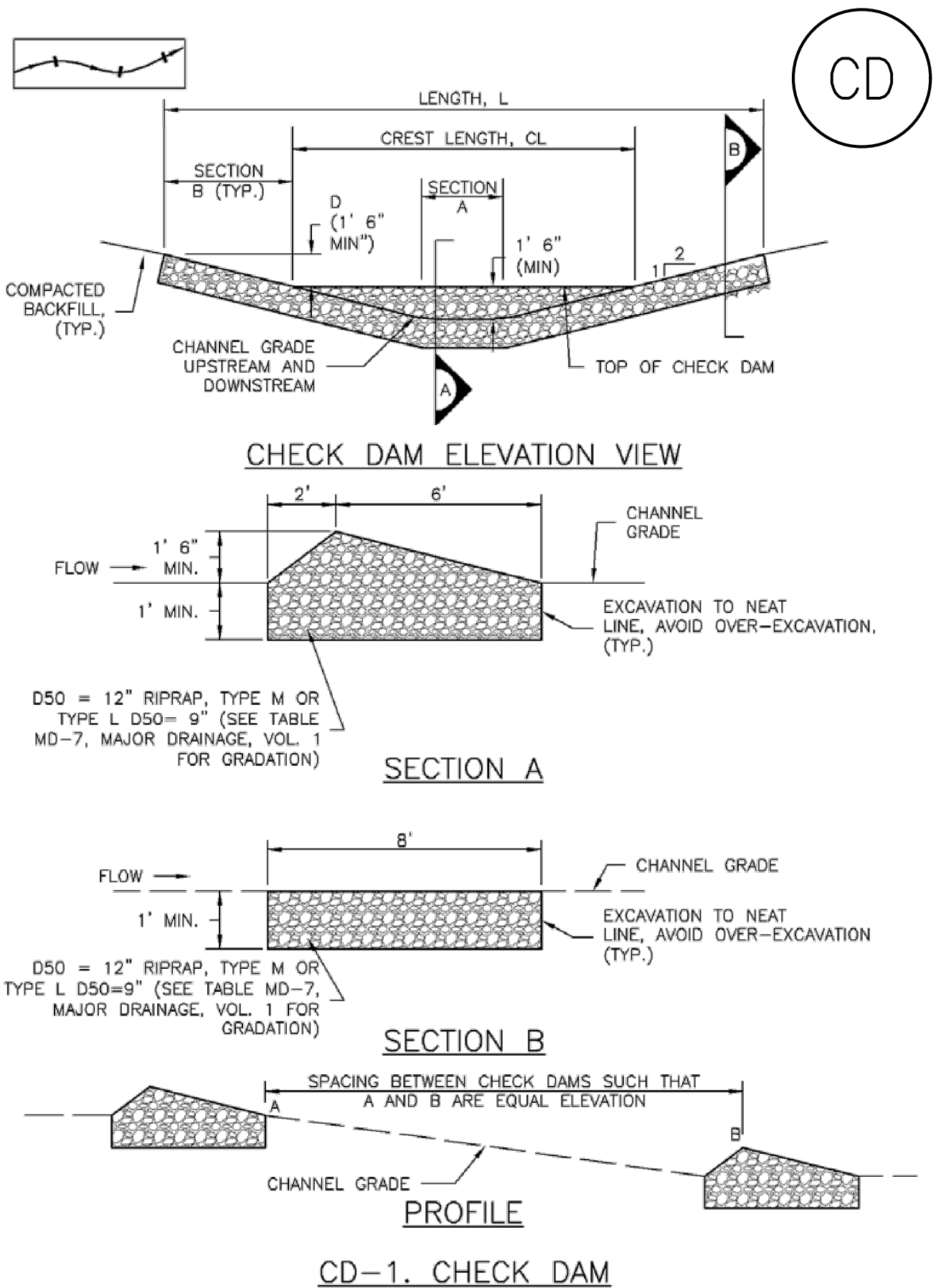
OWNER: SYLVAN VISTA, INC. WILLIAM F. HEREBIC II, MANAGER 14160 GLENEAGLE DRIVE COLORADO SPRINGS, CO 80921	SEAL		GRANDWOOD RANCH	
			EL PASO COUNTY FINAL GRANDING & EROSION CONTROL PLANS	
			EROSION CONTROL DETAILS	
PREPARED BY: 	FOR AND ON BEHALF OF MATRIX DESIGN GROUP, INC. PROJECT No. 20.1105.004		DESIGNED BY: CP DRAWN BY: TS CHECKED BY: NS	SCALE HORIZ N/A VERT. N/A
			DATE ISSUED: SEPTEMBER, 2020	DRAWING No. ECD01
			7 OF 9	



REFERENCE DRAWINGS X-Title-W-Final X-1105-EX SITE DESIGN	####	####	####	####	SHEET KEY 	BENCHMARK NGS T 294 ELEVATION - 7247.10' NAVD 88 	OWNER: SYLVAN VISTA, INC. WILLIAM F. HEREBIC II, MANAGER 14160 GLENEAGLE DRIVE COLORADO SPRINGS, CO 80921 PREPARED BY: 	SEAL	GRANDWOOD RANCH			
	####	####	####	####					CITY OF FOUNTAIN FINAL GRADING & EROSION CONTROL PLANS			
	####	####	####	####					EROSION CONTROL DETAILS			
	####	####	####	####					DESIGNED BY: CP SCALE DATE ISSUED: SEPTEMBER, 2020			
	####	####	####	####					DRAWN BY: TS HORIZ N/A			
	####	####	####	####					CHECKED BY: NS VERT. N/A			
	####	####	####	####					PROJECT No. 20-1105-004			
	####	####	####	####					8 OF 9			
	####	####	####	####					ECD02			
	No. DATE DESCRIPTION BY									BASIS OF BEARING: A LINE THAT IS 20' NORTH OF AND PARALLEL WITH THE EAST-WEST CETNER LINE OF SECTION 19, T11S, R66W, N89°56.32'W - 5135.84'. THE DIRECTION IS A GRID BEARING OF THE COLORADO STATION PLANE COORDINATE SYSTEM, CENTRAL ZONE, N.A.D. 1983. THE LINE IS MONUMENTED BY 5/8" DIAMETER REBAR, 18" IN LENGTH WITH 1-1/2" ALUMINUM CAPS "LWA PLS 28658"	FOR AND ON BEHALF OF MATRIX DESIGN GROUP, INC. PROJECT No. 20-1105-004	EROSION CONTROL DETAILS
COMPUTER FILE MANAGEMENT					DRAWING No.							
FILE NAME: S:\20-1105-004 Grandwood Ranch\100 Dwg\104 Plan Sets\Construction Plans\GEC Plan\Final\ECN01.dwg					ECD02							
CTB FILE: ---												
PLOT DATE: September 21, 2020 11:08:22 AM												
THIS DRAWING IS CURRENT AS OF PLOT DATE AND MAY BE SUBJECT TO CHANGE												

Check Dams (CD)

EC-12



CHECK DAM INSTALLATION NOTES

- SEE PLAN VIEW FOR:
 - LOCATION OF CHECK DAMS.
 - CHECK DAM TYPE (CHECK DAM OR REINFORCED CHECK DAM).
 - LENGTH (L), CREST LENGTH (CL), AND DEPTH (D).
- CHECK DAMS INDICATED ON INITIAL SWMP SHALL BE INSTALLED AFTER CONSTRUCTION FENCE, BUT PRIOR TO ANY UPSTREAM LAND DISTURBING ACTIVITIES.
- RIPRAP UTILIZED FOR CHECK DAMS SHOULD BE OF APPROPRIATE SIZE FOR THE APPLICATION. TYPICAL TYPES OF RIPRAP USED FOR CHECK DAMS ARE TYPE M (D50 12") OR TYPE L (D50 9").
- RIPRAP PAD SHALL BE TRENCHED INTO THE GROUND A MINIMUM OF 1'.
- THE ENDS OF THE CHECK DAM SHALL BE A MINIMUM OF 1' 6" HIGHER THAN THE CENTER OF THE CHECK DAM.

CHECK DAM MAINTENANCE NOTES

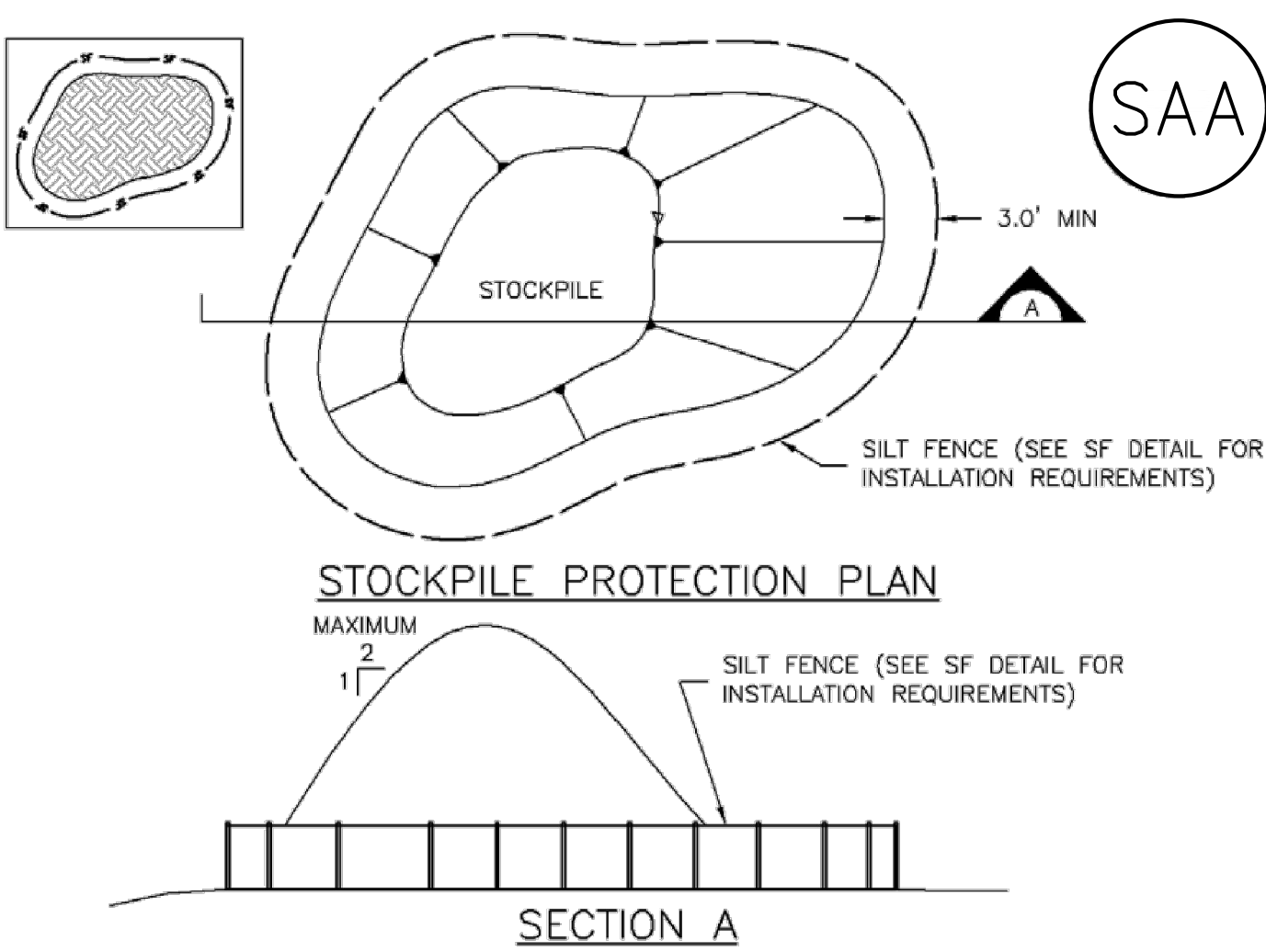
- INSPECT BMPs EACH WORKDAY, AND MAINTAIN THEM IN EFFECTIVE OPERATING CONDITION. MAINTENANCE OF BMPs SHOULD BE PROACTIVE, NOT REACTIVE. INSPECT BMPs AS SOON AS POSSIBLE (AND ALWAYS WITHIN 24 HOURS) FOLLOWING A STORM THAT CAUSES SURFACE EROSION, AND PERFORM NECESSARY MAINTENANCE.
- FREQUENT OBSERVATIONS AND MAINTENANCE ARE NECESSARY TO MAINTAIN BMPs IN EFFECTIVE OPERATING CONDITION. INSPECTIONS AND CORRECTIVE MEASURES SHOULD BE DOCUMENTED THOROUGHLY.
- WHERE BMPs HAVE FAILED, REPAIR OR REPLACEMENT SHOULD BE INITIATED UPON DISCOVERY OF THE FAILURE.
- SEDIMENT ACCUMULATED UPSTREAM OF THE CHECK DAMS SHALL BE REMOVED WHEN THE SEDIMENT DEPTH IS WITHIN 1/2 OF THE HEIGHT OF THE CREST.
- CHECK DAMS ARE TO REMAIN IN PLACE UNTIL THE UPSTREAM DISTURBED AREA IS STABILIZED AND APPROVED BY THE LOCAL JURISDICTION.
- WHEN CHECK DAMS ARE REMOVED, EXCAVATIONS SHALL BE FILLED WITH SUITABLE COMPACTED BACKFILL. DISTURBED AREA SHALL BE SEEDED AND MULCHED AND COVERED WITH GEOTEXTILE OR OTHERWISE STABILIZED IN A MANNER APPROVED BY THE LOCAL JURISDICTION.

(DETAILS ADAPTED FROM DOUGLAS COUNTY, COLORADO, NOT AVAILABLE IN AUTOCAD)

NOTE: MANY JURISDICTIONS HAVE BMP DETAILS THAT VARY FROM UDFCO STANDARD DETAILS. CONSULT WITH LOCAL JURISDICTIONS AS TO WHICH DETAIL SHOULD BE USED WHEN DIFFERENCES ARE NOTED.

Stockpile Management (SP)

MM-2



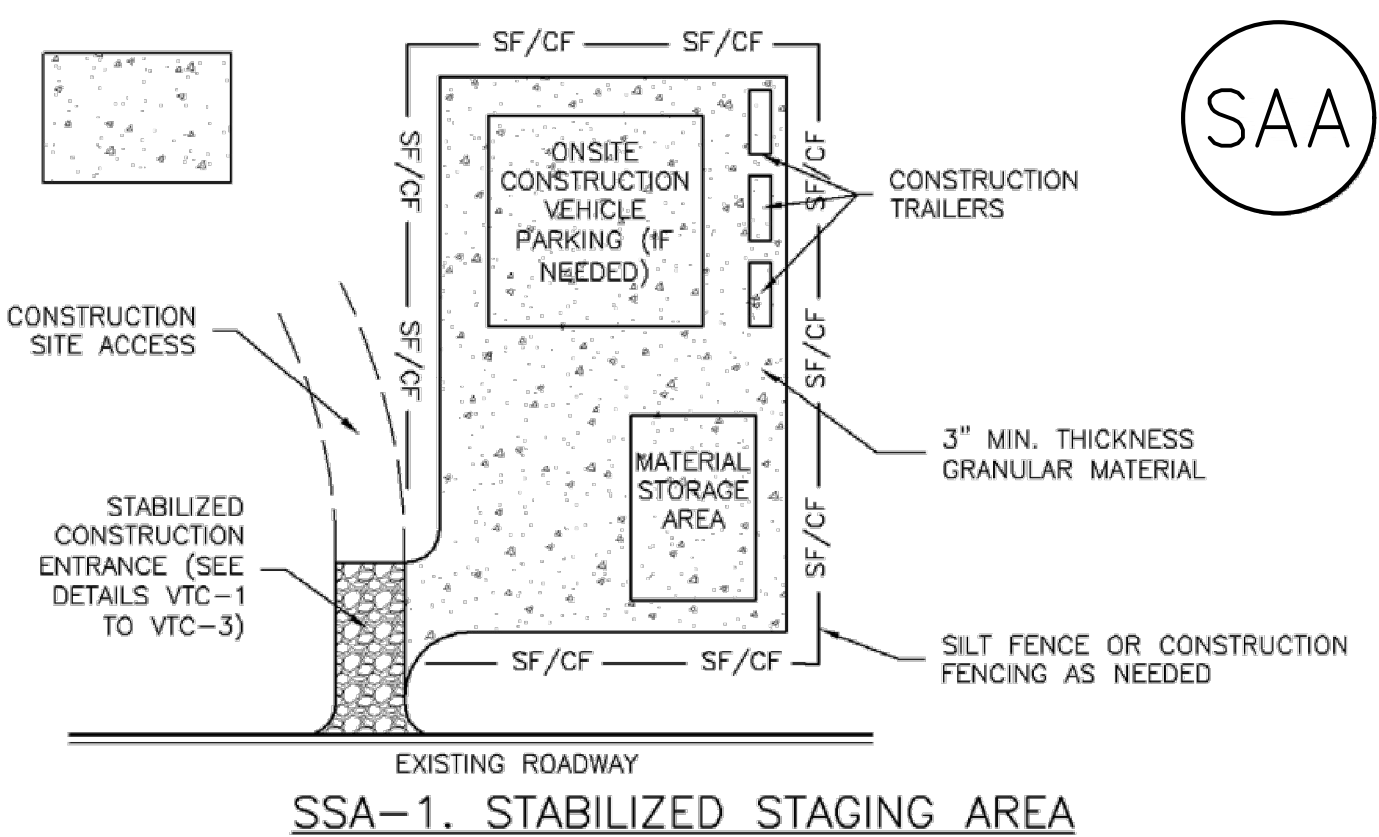
SP-1. STOCKPILE PROTECTION

STOCKPILE PROTECTION INSTALLATION NOTES

- SEE PLAN VIEW FOR:
 - LOCATION OF STOCKPILES.
 - TYPE OF STOCKPILE PROTECTION.
- INSTALL PERIMETER CONTROLS IN ACCORDANCE WITH THEIR RESPECTIVE DESIGN DETAILS. SILT FENCE IS SHOWN IN THE STOCKPILE PROTECTION DETAILS; HOWEVER, OTHER TYPES OF PERIMETER CONTROLS INCLUDING SEDIMENT CONTROL LOGS OR ROCK SOCKS MAY BE SUITABLE IN SOME CIRCUMSTANCES. CONSIDERATIONS FOR DETERMINING THE APPROPRIATE TYPE OF PERIMETER CONTROL FOR A STOCKPILE INCLUDE WHETHER THE STOCKPILE IS LOCATED ON A PERVIOUS OR IMPERVIOUS SURFACE, THE RELATIVE HEIGHTS OF THE PERIMETER CONTROL AND STOCKPILE, THE ABILITY OF THE PERIMETER CONTROL TO CONTAIN THE STOCKPILE WITHOUT FAILING IN THE EVENT THAT MATERIAL FROM THE STOCKPILE SHIFTS OR SLUMPS AGAINST THE PERIMETER, AND OTHER FACTORS.
- STABILIZE THE STOCKPILE SURFACE WITH SURFACE ROUGHENING, TEMPORARY SEEDING AND MULCHING, EROSION CONTROL BLANKETS, OR SOIL BINDERS. SOILS STOCKPILED FOR AN EXTENDED PERIOD (TYPICALLY FOR MORE THAN 60 DAYS) SHOULD BE SEEDED AND MULCHED WITH A TEMPORARY GRASS COVER ONCE THE STOCKPILE IS PLACED (TYPICALLY WITHIN 14 DAYS). USE OF MULCH ONLY OR A SOIL BINDER IS ACCEPTABLE IF THE STOCKPILE WILL BE IN PLACE FOR A MORE LIMITED TIME PERIOD (TYPICALLY 30-60 DAYS).
- FOR TEMPORARY STOCKPILES ON THE INTERIOR PORTION OF A CONSTRUCTION SITE, WHERE OTHER DOWNGRADEMENT CONTROLS, INCLUDING PERIMETER CONTROL, ARE IN PLACE, STOCKPILE PERIMETER CONTROLS MAY NOT BE REQUIRED.

Stabilized Staging Area (SSA)

SM-6

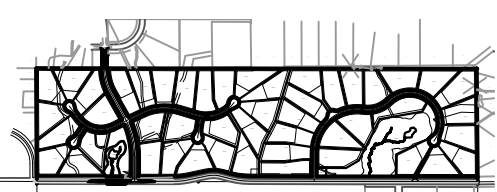



STABILIZED STAGING AREA INSTALLATION NOTES

- SEE PLAN VIEW FOR:
 - LOCATION OF STAGING AREA(S).
 - CONTRACTOR MAY ADJUST LOCATION AND SIZE OF STAGING AREA WITH APPROVAL FROM THE LOCAL JURISDICTION.
- STABILIZED STAGING AREA SHOULD BE APPROPRIATE FOR THE NEEDS OF THE SITE. OVERSIZING RESULTS IN A LARGER AREA TO STABILIZE FOLLOWING CONSTRUCTION.
- STAGING AREA SHALL BE STABILIZED PRIOR TO OTHER OPERATIONS ON THE SITE.
- THE STABILIZED STAGING AREA SHALL CONSIST OF A MINIMUM 3" THICK GRANULAR MATERIAL.
- UNLESS OTHERWISE SPECIFIED BY LOCAL JURISDICTION, ROCK SHALL CONSIST OF DOT SECT. #703, AASHTO #3 COARSE AGGREGATE OR 6" (MINUS) ROCK.
- ADDITIONAL PERIMETER BMPs MAY BE REQUIRED INCLUDING BUT NOT LIMITED TO SILT FENCE AND CONSTRUCTION FENCING.

STABILIZED STAGING AREA MAINTENANCE NOTES

- INSPECT BMPs EACH WORKDAY, AND MAINTAIN THEM IN EFFECTIVE OPERATING CONDITION. MAINTENANCE OF BMPs SHOULD BE PROACTIVE, NOT REACTIVE. INSPECT BMPs AS SOON AS POSSIBLE (AND ALWAYS WITHIN 24 HOURS) FOLLOWING A STORM THAT CAUSES SURFACE EROSION, AND PERFORM NECESSARY MAINTENANCE.
- FREQUENT OBSERVATIONS AND MAINTENANCE ARE NECESSARY TO MAINTAIN BMPs IN EFFECTIVE OPERATING CONDITION. INSPECTIONS AND CORRECTIVE MEASURES SHOULD BE DOCUMENTED THOROUGHLY.
- WHERE BMPs HAVE FAILED, REPAIR OR REPLACEMENT SHOULD BE INITIATED UPON DISCOVERY OF THE FAILURE.
- ROCK SHALL BE REAPPLIED OR REGRADED AS NECESSARY IF RUTTING OCCURS OR UNDERLYING SUBGRADE BECOMES EXPOSED.

REFERENCE DRAWINGS X-Title-W-Final X-1105-EX SITE DESIGN	####	####	####	####	SHEET KEY BENCHMARK NGS T 294 ELEVATION - 7247.10' NAVD 88  BASIS OF BEARING: A LINE THAT IS 20° NORTH OF AND PARALLEL WITH THE EAST-WEST CENETNER LINE OF SECTION 19, T11S, R66W, N89°56:32" W - 5135.84'. THE DIRECTION IS A GRID BEARING OF THE COLORADO STATION PLANE COORDINATE SYSTEM, CENTRAL ZONE, N.A.D. 1983. THE LINE IS MONUMENTED BY 5/8" DIAMETER REBAR, 18" IN LENGTH WITH 1-1/2" ALUMINUM CAPS "LWA PLS 28658"	OWNER: SYLVAN VISTA, INC. WILLIAM F. HEREBIC II, MANAGER 14160 GLENEAGLE DRIVE COLORADO SPRINGS, CO 80921 PREPARED BY: 	SEAL	GRANDWOOD RANCH			
	####	####	####	####				EL PASO COUNTY FINAL GRANDING & EROSION CONTROL PLANS			
	####	####	####	####				EROSION CONTROL DETAILS			
	####	####	####	####				FOR AND ON BEHALF OF MATRIX DESIGN GROUP, INC. PROJECT No. 20.1105.004			
	####	####	####	####				DESIGNED BY: CP DRAWN BY: TS CHECKED BY: NS			
	####	####	####	####				SCALE HORIZ N/A VERT. N/A			
	####	####	####	####				DATE ISSUED: SEPTEMBER, 2020 SHEET 9 OF 9			
	####	####	####	####				DRAWING No. ECD03			
	####	####	####	####							
	####	####	####	####							
No. DATE DESCRIPTION REVISIONS BY											
COMPUTER FILE MANAGEMENT											
FILE NAME: S:\20.1105.004 Grandwood Ranch\100 Dwg\104 Plan Sets\Construction Plans\GEC Plan\Final\ECN01.dwg											
CTB FILE: ---											
PLOT DATE: September 21, 2020 11:08:27 AM											
THIS DRAWING IS CURRENT AS OF PLOT DATE AND MAY BE SUBJECT TO CHANGE.											