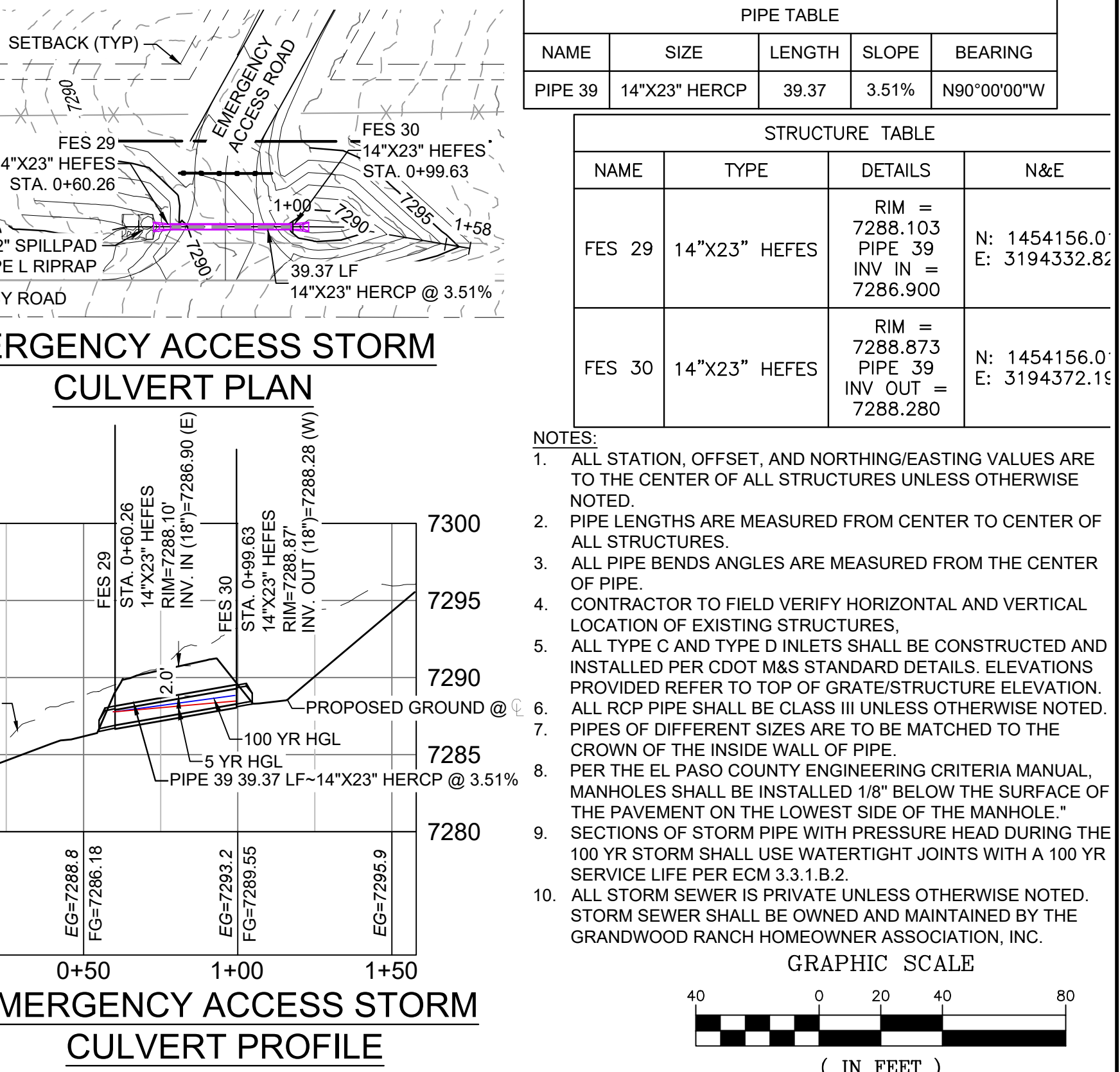
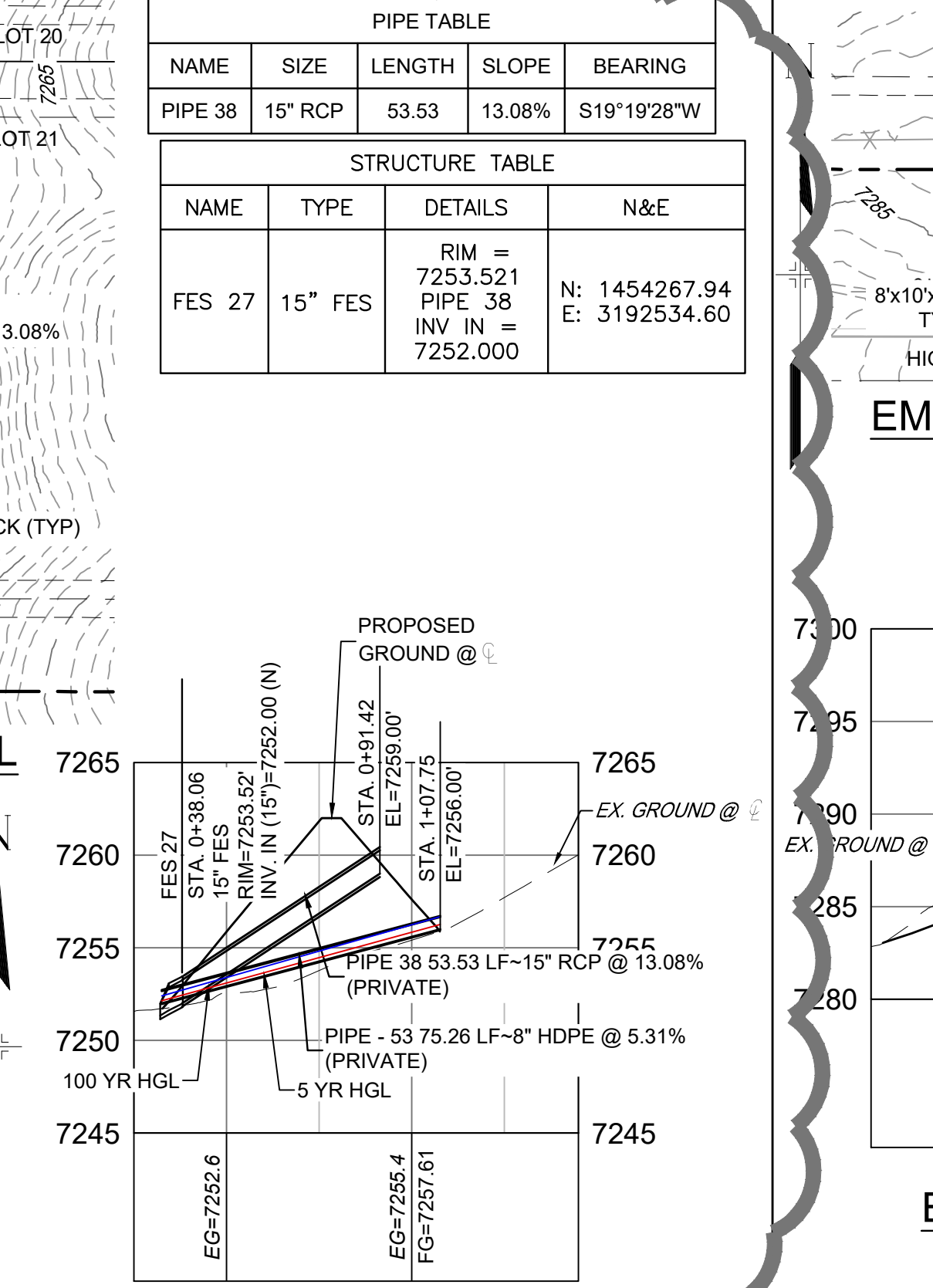
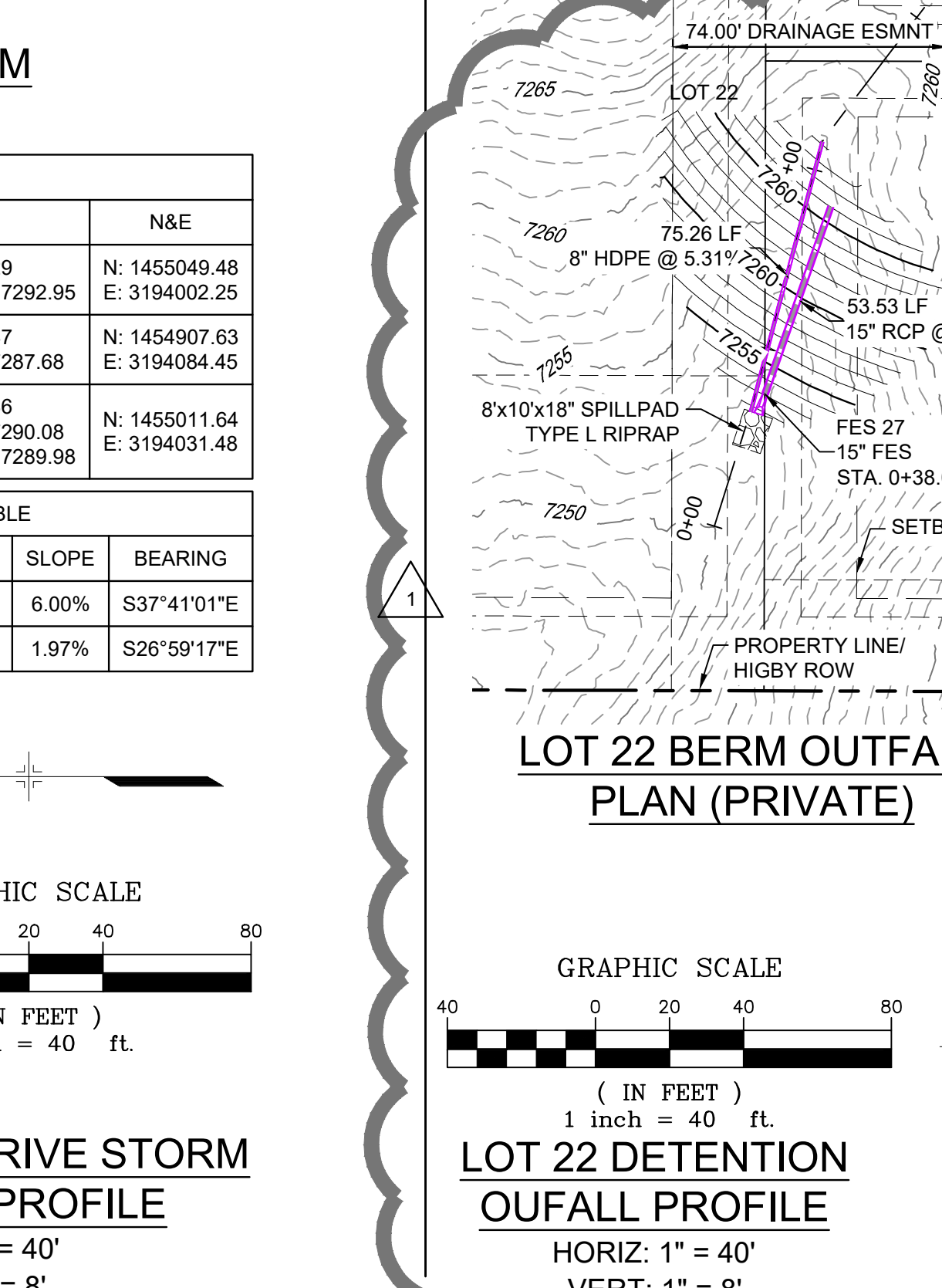
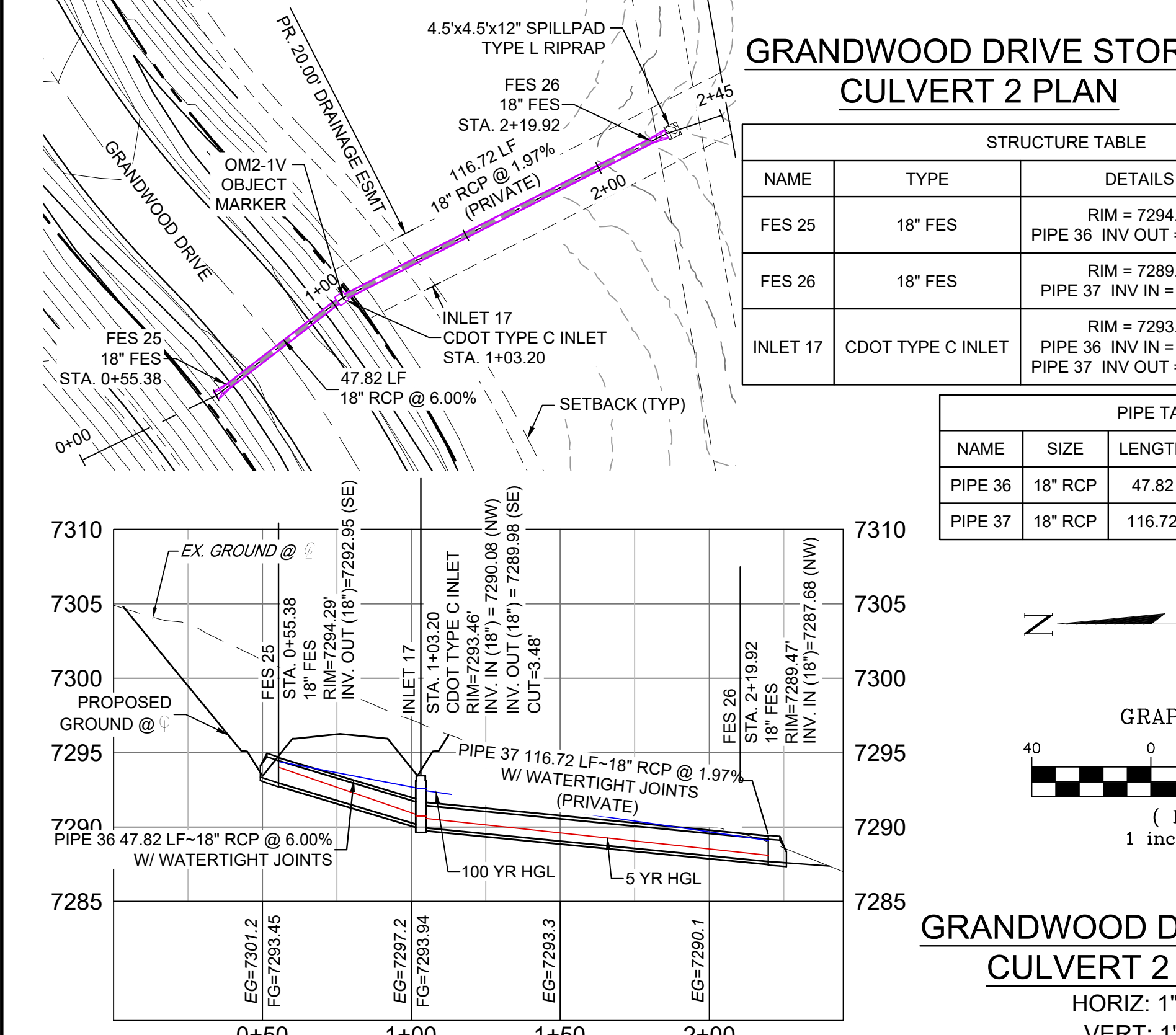
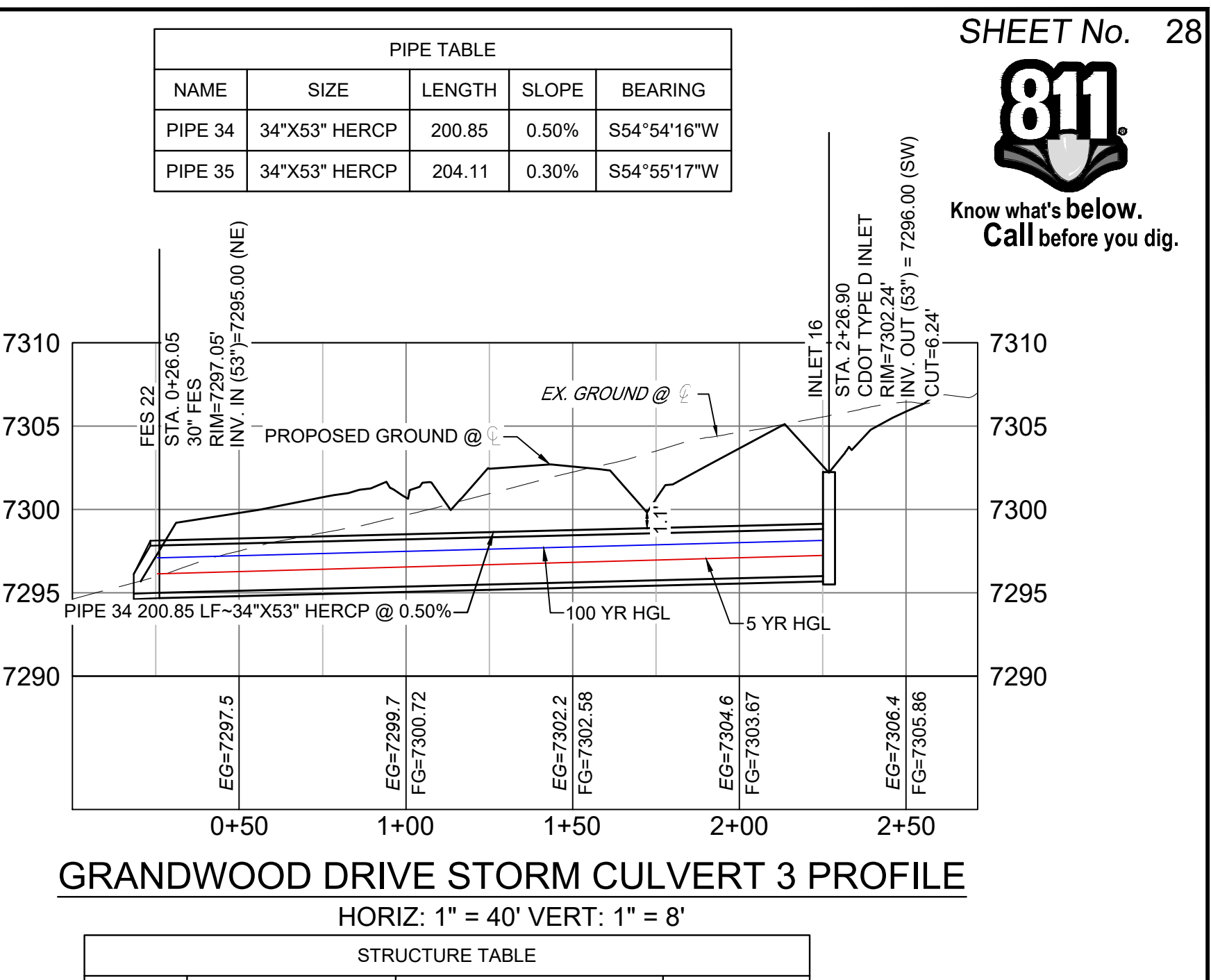
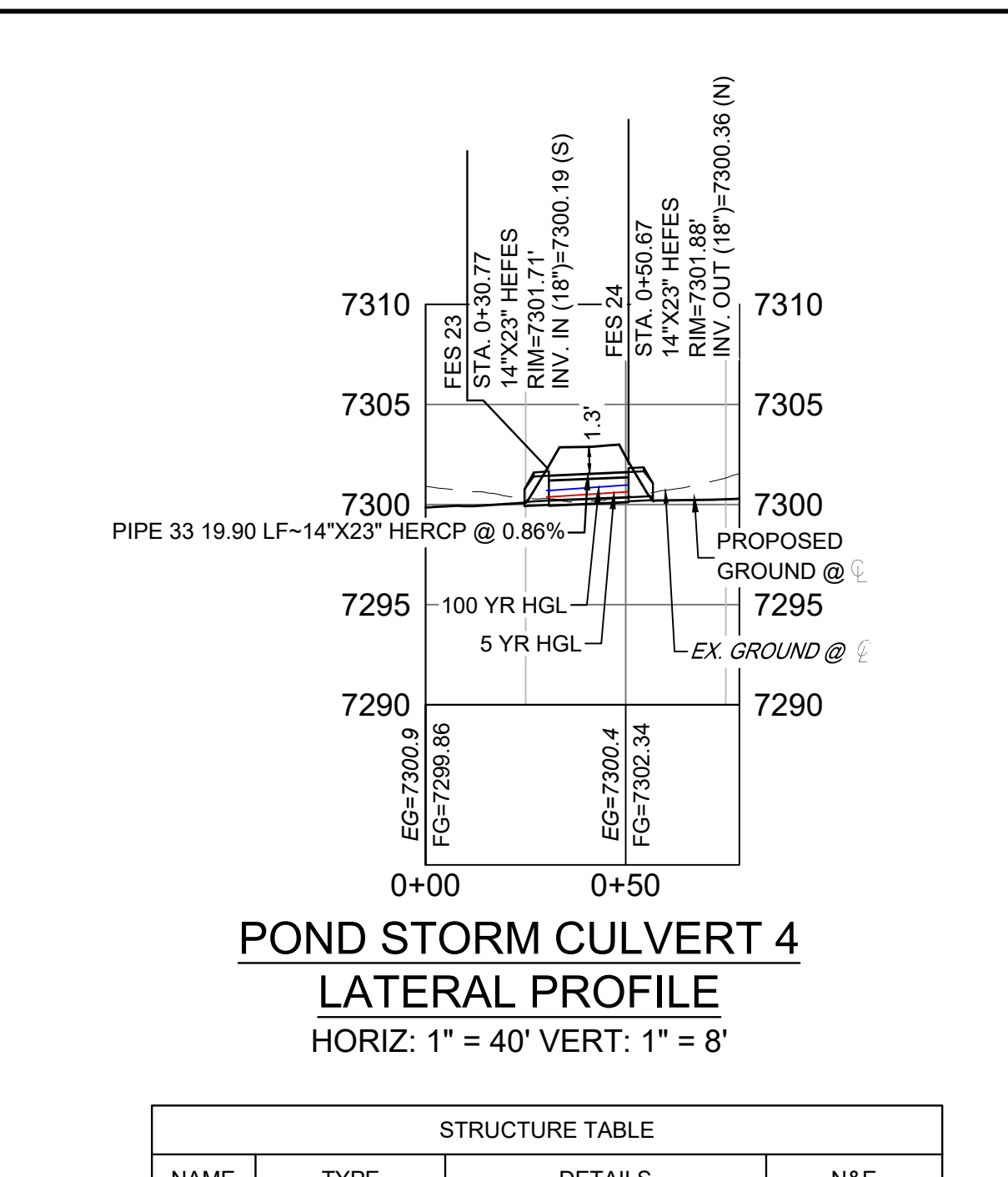
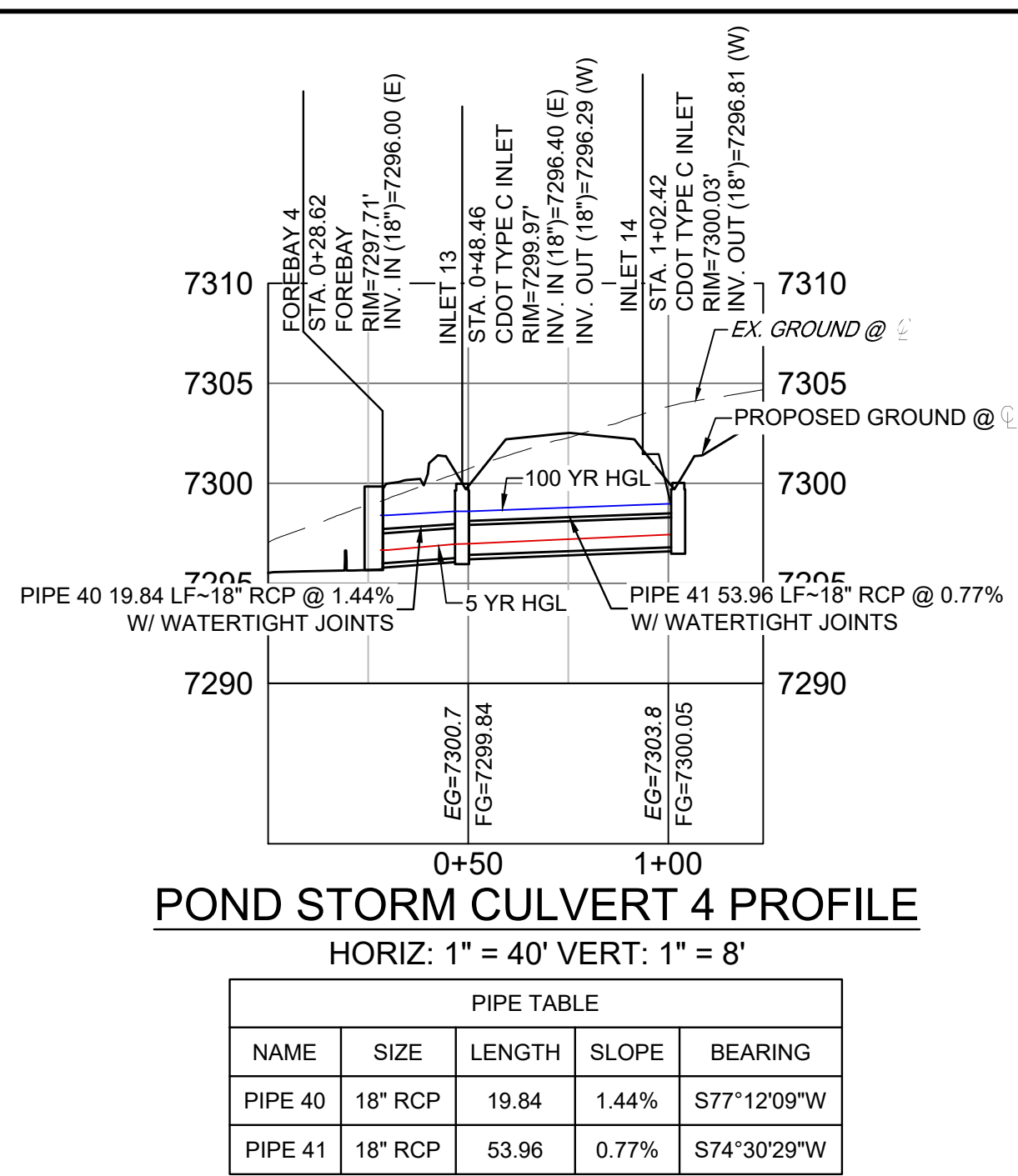
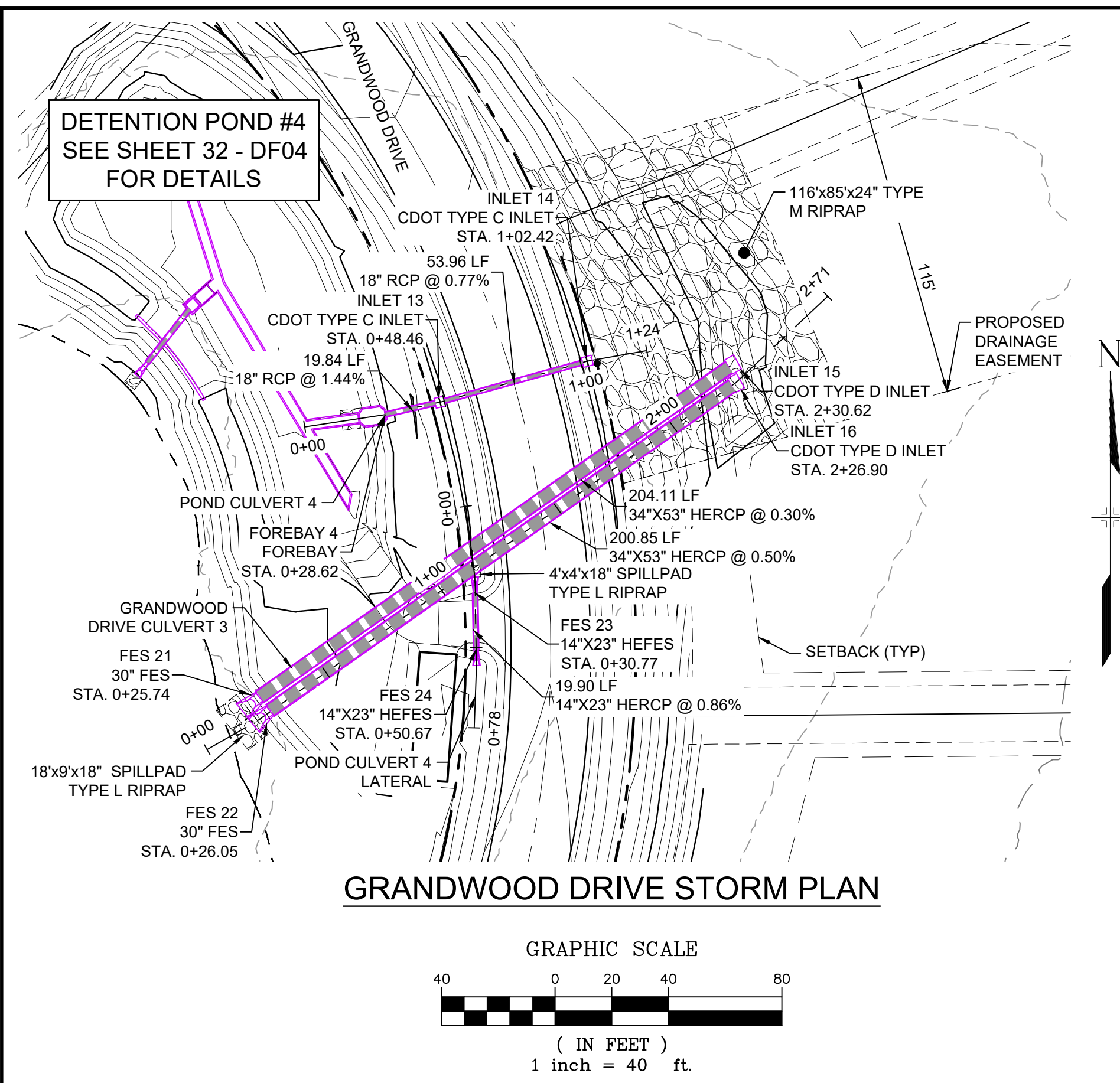




Know what's below. Call before you dig.



No.	DATE	DESCRIPTION	BY
1	7/15/21	LOT 22 BERM REVISION	

COMPUTER FILE MANAGEMENT

FILE NAME: S:\20.1105.004 Grandwood Ranch\100 Dwg\104 Plan Sets\Construction Plans\Road & Storm Plans\SD02.dwg
 CTB FILE:
 PLOT DATE: July 23, 2021 5:11:16 PM
 THIS DRAWING IS CURRENT AS OF PLOT DATE AND MAY BE SUBJECT TO CHANGE.

SHEET KEY

NGS T 294 ELEVATION - 7247.10 NAVD 88

BASIS OF BEARING:
A LINE THAT IS 20° NORTH OF AND PARALLEL WITH THE EAST-WEST CENTER LINE OF SECTION 19, T11S, R66W, N89°56'32"W - 5135.84'. THE DIRECTION IS A GRID BEARING OF THE COLORADO STATION PLANE COORDINATE SYSTEM, CENTRAL ZONE, N.A.D. 1983. THE LINE IS MONUMENTED BY 5/8" DIAMETER REBAR, 18" IN LENGTH WITH 1-1/2" ALUMINUM CAPS "LWA PLS 28658"

OWNER:
SYLVAN VISTA, INC.
WILLIAM F. HEREBIC II,
MANAGER
14160 GLENEAGLE DRIVE,
COLORADO SPRINGS, CO 80921

PREPARED BY:
Matrix

GRANDWOOD RANCH
EL PASO COUNTY - SF 2026
ROAD AND STORM PLANS

STORM PLAN AND PROFILE

DESIGNED BY: CAP
DRAWN BY: CAP
CHECKED BY: NMS

SCALE: 1" = 40'
1" = 8'

DATE ISSUED: FEBRUARY, 2021
SHEET: 28 OF 40

DRAWING No. SD06