



THE LOCATIONS OF EXISTING ABOVE GROUND AND UNDERGROUND UTILITIES ARE SHOWN IN AN APPROXIMATE WAY ONLY. THE CONTRACTOR SHALL DETERMINE THE EXACT LOCATION OF ALL EXISTING UTILITIES BEFORE COMMENCING WORK. THE CONTRACTOR SHALL BE FULLY RESPONSIBLE FOR ANY AND ALL DAMAGES WHICH MIGHT BE CAUSED BY HIS FAILURE TO EXACTLY LOCATE AND PRESERVE ANY AND ALL ABOVE GROUND AND UNDERGROUND UTILITIES.

HAY CREEK VALLEY

EL PASO COUNTY, COLORADO

FINAL GRADING & EROSION CONTROL PLANS

SEPTEMBER 2023

INDEX OF SHEETS		SHEET No.
TS01	TITLE SHEET	01
GN01	KEY MAP	02
GN02	GENERAL NOTES	03
GEC01-GEC06	GRADING & EROSION CONTROL PLAN	04-09
ECN01-ECN02	DETAILS	10-11

EPC STORMWATER REVIEW COMMENTS
IN ORANGE BOXES WITH BLACK TEXT

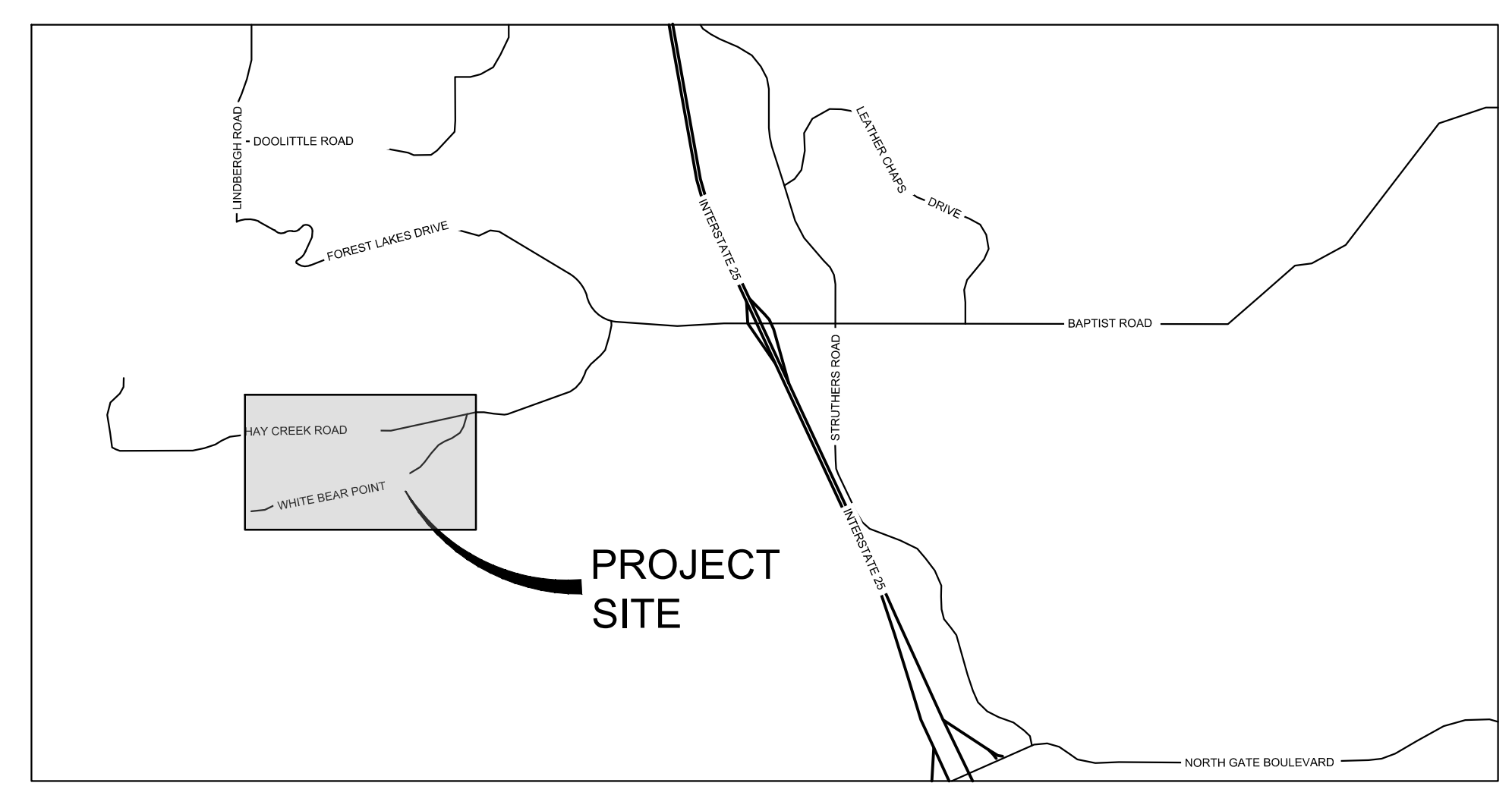
NOTED

AGENCY CONTACT INFO

OWNER/DEVELOPER	VIEW HOMES, INC. 555 MIDDLE CREEK PARKWAY, SUITE 500 COLORADO SPRINGS, CO 80921 TIM BUSCHAR, (719)-382-9433
CIVIL ENGINEER	MATRIX DESIGN GROUP 2435 RESEARCH PARKWAY, SUITE 300 COLORADO SPRINGS, CO 80920 (719)-575-0100
ELECTRIC	MOUNTAIN VIEW ELECTRIC ASSOCIATION 15706 JACKSON CREEK PARKWAY, SUITE 100 MONUMENT, CO 80132 GINA PERRY, (719) 494-2636
GAS	BLACK HILLS ENERGY 105 S VICTORIA AVENUE PUEBLO, CO 81003 (800) 303-0752
ENGINEERING	EL PASO COUNTY PUBLIC WORKS DEPARTMENT 3275 AKERS DRIVE COLORADO SPRINGS, CO 80922 (719) 520-6460
TRAFFIC	EL PASO COUNTY PUBLIC WORKS DEPARTMENT 3275 AKERS DRIVE COLORADO SPRINGS, CO 80922 (719) 520-6460
DRAINAGE	EL PASO COUNTY PUBLIC WORKS DEPARTMENT 3275 AKERS DRIVE COLORADO SPRINGS, CO 80922 (719) 520-6460
FIRE DEPARTMENT	MONUMENT FIRE DISTRICT 16055 OLD FOREST POINT, SUITE 102 MONUMENT, CO 80132 (719)-484-0911



SITE MAP
1" = 500'



VICINITY MAP
N.T.S.

OWNER/DEVELOPER'S STATEMENT:

I, THE OWNER/DEVELOPER HAVE READ AND WILL COMPLY WITH THE REQUIREMENTS OF THE GRADING AND EROSION CONTROL PLAN.

NAME _____ DATE _____

TIM BUSCHAR, (719)-382-9433
VIEW HOMES, INC.
555 MIDDLE CREEK PARKWAY, SUITE 500
COLORADO SPRINGS, CO 80921

DESIGN ENGINEER'S STATEMENT:

THIS GRADING AND EROSION CONTROL PLAN WAS PREPARED UNDER MY DIRECTION AND SUPERVISION AND IS CORRECT TO THE BEST OF MY KNOWLEDGE AND BELIEF. SAID PLAN HAS BEEN PREPARED ACCORDING TO THE CRITERIA ESTABLISHED BY THE COUNTY FOR GRADING AND EROSION CONTROL PLANS. I ACCEPT RESPONSIBILITY FOR ANY LIABILITY CAUSED BY ANY NEGLIGENT ACTS, ERRORS OR OMISSIONS ON MY PART IN PREPARING THIS PLAN.

BY: _____ DATE: _____

JEFFREY A. ODOR, PE #39265
FOR AND ON BEHALF OF MATRIX DESIGN GROUP, INC.

EL PASO COUNTY:

COUNTY PLAN REVIEW IS PROVIDED ONLY FOR GENERAL CONFORMANCE WITH COUNTY DESIGN CRITERIA. THE COUNTY IS NOT RESPONSIBLE FOR THE ACCURACY AND ADEQUACY OF THE DESIGN, DIMENSIONS, AND/OR ELEVATIONS WHICH SHALL BE CONFIRMED AT THE JOB SITE. THE COUNTY THROUGH THE APPROVAL OF THIS DOCUMENT ASSUMES NO RESPONSIBILITY FOR COMPLETENESS AND/OR ACCURACY OF THIS DOCUMENT.

FILED IN ACCORDANCE WITH THE REQUIREMENTS OF THE EL PASO COUNTY LAND DEVELOPMENT CODE, DRAINAGE CRITERIA MANUAL VOLUMES 1 AND 2, AND ENGINEERING CRITERIA MANUAL, AS AMENDED.

IN ACCORDANCE WITH ECM SECTION 1.12, THESE CONSTRUCTION DOCUMENTS WILL BE VALID FOR CONSTRUCTION FOR A PERIOD OF 2 YEARS FROM THE DATE SIGNED BY THE EL PASO COUNTY ENGINEER. IF CONSTRUCTION HAS NOT STARTED WITHIN THOSE 2 YEARS, THE PLANS WILL NEED TO BE RESUBMITTED FOR APPROVAL, INCLUDING PAYMENT OF REVIEW FEES AT THE PLANNING AND COMMUNITY DEVELOPMENT DIRECTOR'S DISCRETION.

JOSHUA PALMER, P.E. _____ DATE _____
COUNTY ENGINEER / ECM ADMINISTRATOR

ADDRESSED

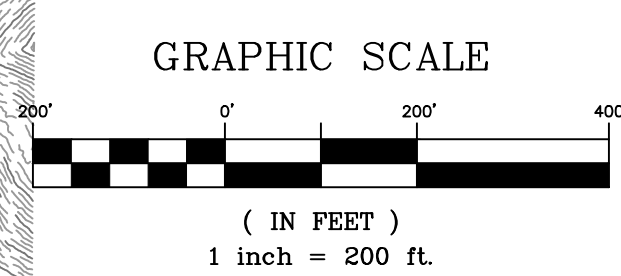
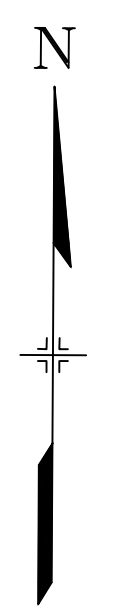
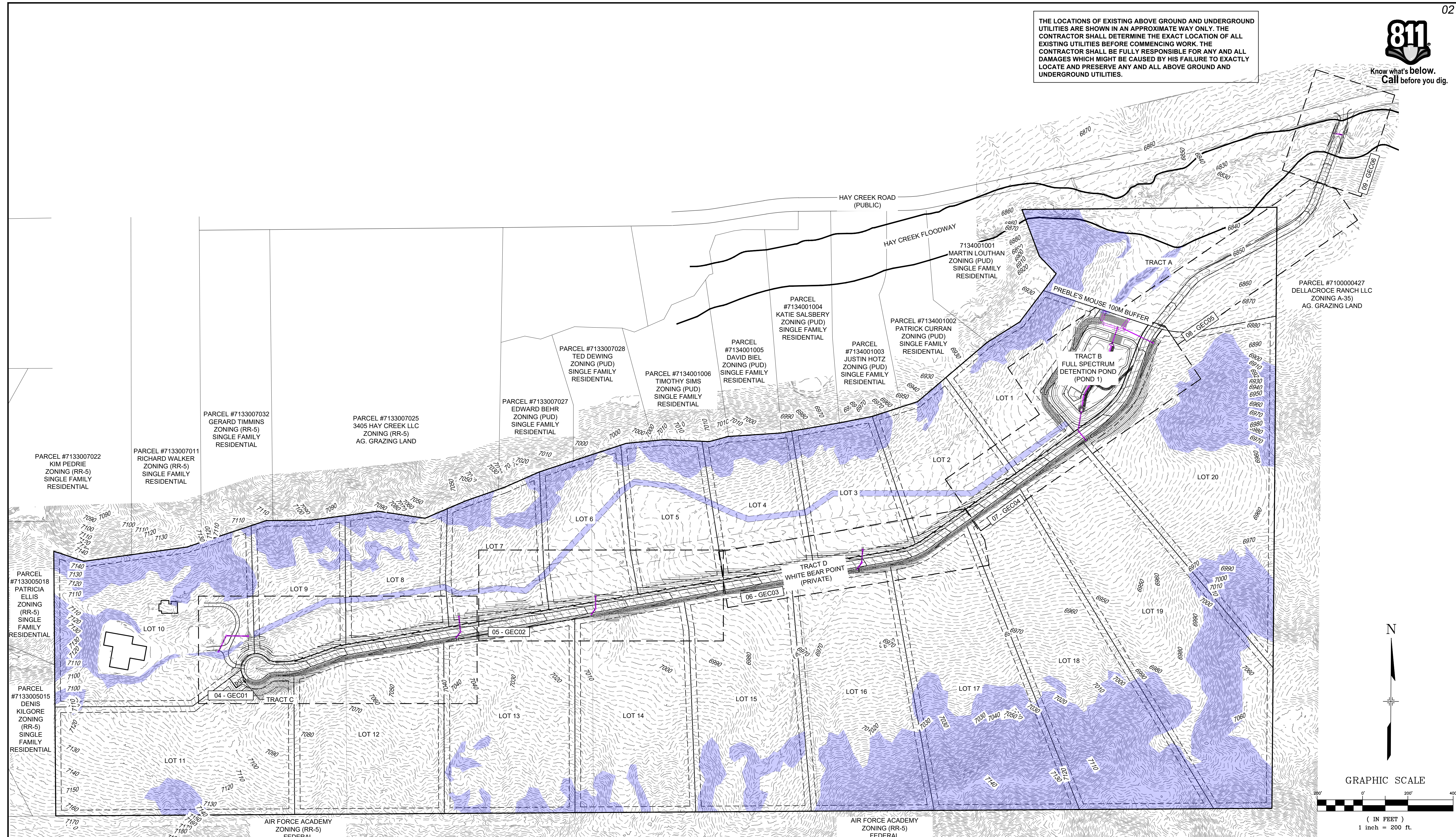
Add text:
EPC's EDARP File Number: SF2324

REFERENCE DRAWINGS	No.	DATE	DESCRIPTION	BY	SHEET KEY	BENCHMARK	SEAL	TITLE SHEET		
X-TITLE-CD X-886-PR-SITE FEMA_X3 X-886-066-EX-MAP-1 164022-01 Hay Creek Road BMDY X-886-ALTA-SURVEY Hay Creek BFEs						BENCHMARK PROJECT ELEVATIONS ARE NAVD 88 ELEVATIONS BASED ON AN OPUS DERIVED ELEVATION ON CONTROL POINT 10, A NO. 5 REBAR HAVING AN ELEVATION OF 5769.92.	PRELIMINARY THIS DRAWING HAS NOT BEEN APPROVED BY GOVERNING AGENCIES AND IS SUBJECT TO CHANGE	HAY CREEK VALLEY EL PASO COUNTY, COLORADO FINAL GRADING & EROSION CONTROL PLANS TITLE SHEET		
COMPUTER FILE MANAGEMENT FILE NAME: S:\22.886.076 Hay Creek-Forest Manor-O'Leary Properties\500 CADD\504 Plan Sets\Construction Plans\GEC Plan\TS01.dwg CTB FILE: Matrix.ctb PLOT DATE: 9/22/2023 2:32 PM THIS DRAWING IS CURRENT AS OF PLOT DATE AND MAY BE SUBJECT TO CHANGE.						BASIS OF BEARING THE SOUTH LINE OF THE NORTHWEST QUARTER OF SECTION 22, TOWNSHIP 15 SOUTH, RANGE 65 WEST OF THE 6TH PRINCIPAL MERIDIAN, COUNTY OF EL PASO, STATE OF COLORADO, BEING MONUMENTED ON THE EASTERLY END BY A 2-1/2" ALUMINUM CAP STAMPED "NOLTE PLS25955 C1/4 S22 T16S, R65W 1999, "AND THE WESTERLY END BY A2-1/2" ALUMINUM CAP STAMPED "SSS PLS 16154 1/4 S21 S22 T15S, R65W 2000, "BEING ASSUMED TO BEAR S89°54'42"W, A DISTANCE OF 2,627.78 FEET.	PREPARED BY: Excellence by Design	FOR AND ON BEHALF OF MATRIX DESIGN GROUP, INC. PROJECT No. 22.886.076		
							DESIGNED BY: CVW DRAWN BY: CVW CHECKED BY: JAO	SCALE: HORIZ. N/A VERT. N/A	DATE ISSUED: SEPTEMBER 2023 SHEET: 01 OF 11	DRAWING No. TS01

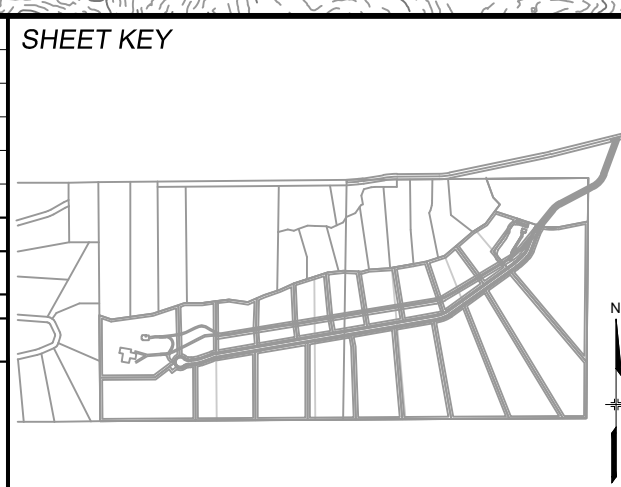


Know what's below. Call before you dig.

THE LOCATIONS OF EXISTING ABOVE GROUND AND UNDERGROUND UTILITIES ARE SHOWN IN AN APPROXIMATE WAY ONLY. THE CONTRACTOR SHALL DETERMINE THE EXACT LOCATION OF ALL EXISTING UTILITIES BEFORE COMMENCING WORK. THE CONTRACTOR SHALL BE FULLY RESPONSIBLE FOR ANY AND ALL DAMAGES WHICH MIGHT BE CAUSED BY HIS FAILURE TO EXACTLY LOCATE AND PRESERVE ANY AND ALL ABOVE GROUND AND UNDERGROUND UTILITIES.



No.	DATE	DESCRIPTION	BY
REVISIONS			
COMPUTER FILE MANAGEMENT			
FILE NAME: S:\22.886.076 Hay Creek-Forest Manor-O'Leary Properties\500 CADD\504 Plan Sets\Construction Plans\GEC Plan\TS01.dwg			
CTB FILE: Matrix.ctb			
PLOT DATE: 9/22/2023 2:32 PM			
THIS DRAWING IS CURRENT AS OF PLOT DATE AND MAY BE SUBJECT TO CHANGE.			



BENCHMARK
PROJECT ELEVATIONS ARE NAVD 88 ELEVATIONS BASED ON AN OPUS DERIVED ELEVATION ON CONTROL POINT 10, A NO. 5 REBAR HAVING AN ELEVATION OF 5769.92.

BASIS OF BEARING
THE SOUTH LINE OF THE NORTHWEST QUARTER OF SECTION 22, TOWNSHIP 15 SOUTH, RANGE 65 WEST OF THE 6TH PRINCIPAL MERIDIAN, COUNTY OF EL PASO, STATE OF COLORADO, BEING MONUMENTED ON THE EASTERLY END BY A 2-1/2" ALUMINUM CAP STAMPED "NOLTE PLS25955 C1/4 S22 T16S, R65W 1999, "AND THE WESTERLY END BY A 2-1/2" ALUMINUM CAP STAMPED "SSS PLS 16154 1/4 S21 S22 T15S, R65W 2000, "BEING ASSUMED TO BEAR S89°54'42"W, A DISTANCE OF 2,627.78 FEET.

PREPARED BY:

Excellence by Design

SEAL

PRELIMINARY
THIS DRAWING HAS NOT BEEN APPROVED BY GOVERNING AGENCIES AND IS SUBJECT TO CHANGE

FOR AND ON BEHALF OF
MATRIX DESIGN GROUP, INC.
PROJECT No. 22.886.076

HAY CREEK VALLEY

EL PASO COUNTY, COLORADO
FINAL GRADING & EROSION CONTROL PLANS

KEY MAP

DESIGNED BY: CVW	SCALE: 1"=200'	DATE ISSUED: SEPTEMBER 2023	DRAWING No. GN01
DRAWN BY: CVW	HORIZ. N/A	SHEET 02 OF 11	
CHECKED BY: JAO	VERT. N/A		



Know what's below. Call before you dig.

GENERAL CONSTRUCTION NOTES:

- 1. STORMWATER DISCHARGES FROM CONSTRUCTION SITES SHALL NOT CAUSE OR THREATEN TO CAUSE POLLUTION, CONTAMINATION, OR DEGRADATION OF STATE WATERS. ALL WORK AND EARTH DISTURBANCE SHALL BE DONE IN A MANNER THAT MINIMIZES POLLUTION OF ANY ON-SITE OR OFF-SITE WATERS, INCLUDING WETLANDS.
2. NOTWITHSTANDING ANYTHING DEPICTED IN THESE PLANS IN WORDS OR GRAPHIC REPRESENTATION, ALL DESIGN AND CONSTRUCTION RELATED TO ROADS, STORM DRAINAGE AND EROSION CONTROL SHALL CONFORM TO THE STANDARDS AND REQUIREMENTS OF THE MOST RECENT VERSION OF THE RELEVANT ADOPTED EL PASO COUNTY STANDARDS, INCLUDING THE LAND DEVELOPMENT CODE, THE ENGINEERING CRITERIA MANUAL, THE DRAINAGE CRITERIA MANUAL, AND THE DRAINAGE CRITERIA MANUAL VOLUME 2. ANY DEVIATIONS FROM REGULATIONS AND STANDARDS MUST BE REQUESTED, AND APPROVED, IN WRITING.
3. A SEPARATE STORMWATER MANAGEMENT PLAN (SMWP) FOR THIS PROJECT SHALL BE COMPLETED AND AN EROSION AND STORMWATER QUALITY CONTROL PERMIT (ESQCP) ISSUED PRIOR TO COMMENCING CONSTRUCTION. MANAGEMENT OF THE SWMP DURING CONSTRUCTION IS THE RESPONSIBILITY OF THE DESIGNATED QUALIFIED STORMWATER MANAGER OR CERTIFIED EROSION CONTROL INSPECTOR. THE SWMP SHALL BE LOCATED ON SITE AT ALL TIMES DURING CONSTRUCTION AND SHALL BE KEPT UP TO DATE WITH WORK PROGRESS AND CHANGES IN THE FIELD.
4. ONCE THE ESQCP IS APPROVED AND A "NOTICE TO PROCEED" HAS BEEN ISSUED, THE CONTRACTOR MAY INSTALL THE INITIAL STAGE EROSION AND SEDIMENT CONTROL MEASURES AS INDICATED ON THE APPROVED GEC. A PRECONSTRUCTION MEETING BETWEEN THE CONTRACTOR, ENGINEER, AND EL PASO COUNTY WILL BE HELD PRIOR TO ANY CONSTRUCTION. IT IS THE RESPONSIBILITY OF THE APPLICANT TO COORDINATE THE MEETING TIME AND PLACE WITH COUNTY STAFF.
5. CONTROL MEASURES MUST BE INSTALLED PRIOR TO COMMENCEMENT OF ACTIVITIES THAT COULD CONTRIBUTE POLLUTANTS TO STORMWATER. CONTROL MEASURES FOR ALL SLOPES, CHANNELS, DITCHES, AND DISTURBED LAND AREAS SHALL BE INSTALLED IMMEDIATELY UPON COMPLETION OF THE DISTURBANCE.
6. ALL TEMPORARY SEDIMENT AND EROSION CONTROL MEASURES SHALL BE MAINTAINED AND REMAIN IN EFFECTIVE OPERATING CONDITION UNTIL PERMANENT SOIL EROSION CONTROL MEASURES ARE IMPLEMENTED AND FINAL STABILIZATION IS ESTABLISHED. ALL PERSONS ENGAGED IN LAND DISTURBANCE ACTIVITIES SHALL ASSESS THE ADEQUACY OF CONTROL MEASURES AT THE SITE AND IDENTIFY IF CHANGES TO THOSE CONTROL MEASURES ARE NEEDED TO ENSURE THE CONTINUED EFFECTIVE PERFORMANCE OF THE CONTROL MEASURES. ALL CHANGES TO TEMPORARY SEDIMENT AND EROSION CONTROL MEASURES MUST BE INCORPORATED INTO THE STORMWATER MANAGEMENT PLAN.
7. TEMPORARY STABILIZATION SHALL BE IMPLEMENTED ON DISTURBED AREAS AND STOCKPILES WHERE GROUND DISTURBING CONSTRUCTION ACTIVITY HAS PERMANENTLY CEASED OR TEMPORARILY CEASED FOR LONGER THAN 14 DAYS.
8. FINAL STABILIZATION MUST BE IMPLEMENTED AT ALL APPLICABLE CONSTRUCTION SITES. FINAL STABILIZATION IS ACHIEVED WHEN ALL GROUND DISTURBING ACTIVITIES ARE COMPLETE AND ALL DISTURBED AREAS EITHER HAVE A UNIFORM VEGETATIVE COVER WITH INDIVIDUAL PLANT DENSITY OF 70 PERCENT OF PRE-DISTURBANCE LEVELS ESTABLISHED OR EQUIVALENT PERMANENT ALTERNATIVE STABILIZATION METHOD IS IMPLEMENTED. ALL TEMPORARY SEDIMENT AND EROSION CONTROL MEASURES SHALL BE REMOVED UPON FINAL STABILIZATION AND BEFORE PERMIT CLOSURE.
9. ALL PERMANENT STORMWATER MANAGEMENT FACILITIES SHALL BE INSTALLED AS DESIGNED IN THE APPROVED PLANS. ANY PROPOSED CHANGES THAT EFFECT THE DESIGN OR FUNCTION OF PERMANENT STORMWATER MANAGEMENT STRUCTURES MUST BE APPROVED BY THE ECM ADMINISTRATOR PRIOR TO IMPLEMENTATION.
10. EARTH DISTURBANCES SHALL BE CONDUCTED IN SUCH A MANNER SO AS TO EFFECTIVELY MINIMIZE ACCELERATED SOIL EROSION AND RESULTING SEDIMENTATION. ALL DISTURBANCES SHALL BE DESIGNED, CONSTRUCTED, AND COMPLETED SO THAT THE EXPOSED AREA OF ANY DISTURBED LAND SHALL BE LIMITED TO THE SHORTEST PRACTICAL PERIOD OF TIME. PRE-EXISTING VEGETATION SHALL BE PROTECTED AND MAINTAINED WITHIN 50 HORIZONTAL FEET OF A WATERS OF THE STATE UNLESS SHOWN TO BE INFEASIBLE AND SPECIFICALLY REQUESTED AND APPROVED.
11. COMPACTION OF SOIL MUST BE PREVENTED IN AREAS DESIGNATED FOR INFILTRATION CONTROL MEASURES OR WHERE FINAL STABILIZATION WILL BE ACHIEVED BY VEGETATIVE COVER. AREAS

- DESIGNATED FOR INFILTRATION CONTROL MEASURES SHALL ALSO BE PROTECTED FROM SEDIMENTATION DURING CONSTRUCTION UNTIL FINAL STABILIZATION IS ACHIEVED. IF COMPACTION PREVENTION IS NOT FEASIBLE DUE TO SITE CONSTRAINTS, ALL AREAS DESIGNATED FOR INFILTRATION AND VEGETATION CONTROL MEASURES MUST BE LOOSENED PRIOR TO INSTALLATION OF THE CONTROL MEASURE(S).
12. ANY TEMPORARY OR PERMANENT FACILITY DESIGNED AND CONSTRUCTED FOR THE CONVEYANCE OF STORMWATER AROUND, THROUGH, OR FROM THE EARTH DISTURBANCE AREA SHALL BE A STABILIZED CONVEYANCE DESIGNED TO MINIMIZE EROSION AND THE DISCHARGE OF SEDIMENT OFF SITE.
13. CONCRETE WASH WATER SHALL BE CONTAINED AND DISPOSED OF IN ACCORDANCE WITH THE SWMP. NO WASH WATER SHALL BE DISCHARGED TO OR ALLOWED TO ENTER STATE WATERS, INCLUDING ANY SURFACE OR SUBSURFACE STORM DRAINAGE SYSTEM OR FACILITIES. CONCRETE WASHOUTS SHALL NOT BE LOCATED IN AN AREA WHERE SHALLOW GROUNDWATER MAY BE PRESENT, OR WITHIN 50 FEET OF A SURFACE WATER BODY, CREEK OR STREAM.
14. DURING DEWATERING OPERATIONS OF UNCONTAMINATED GROUND WATER MAY BE DISCHARGED ON SITE, BUT SHALL NOT LEAVE THE SITE IN THE FORM OF SURFACE RUNOFF UNLESS AN APPROVED STATE DEWATERING PERMIT IS IN PLACE.
15. EROSION CONTROL BLANKETING OR OTHER PROTECTIVE COVERING SHALL BE USED ON SLOPES STEEPER THAN 3:1.
16. CONTRACTOR SHALL BE RESPONSIBLE FOR THE REMOVAL OF ALL WASTES FROM THE CONSTRUCTION SITE FOR DISPOSAL IN ACCORDANCE WITH LOCAL AND STATE REGULATORY REQUIREMENTS. NO CONSTRUCTION DEBRIS, TREE SLASH, BUILDING MATERIAL WASTES OR UNUSED BUILDING MATERIALS SHALL BE BURIED, DUMPED, OR DISCHARGED AT THE SITE.
17. WASTE MATERIALS SHALL NOT BE TEMPORARILY PLACED OR STORED IN THE STREET, ALLEY, OR OTHER PUBLIC WAY, UNLESS IN ACCORDANCE WITH AN APPROVED TRAFFIC CONTROL PLAN. CONTROL MEASURES MAY BE REQUIRED BY EL PASO COUNTY ENGINEERING IF DEEMED NECESSARY, BASED ON SPECIFIC CONDITIONS AND CIRCUMSTANCES.
18. TRACKING OF SOILS AND CONSTRUCTION DEBRIS OFF-SITE SHALL BE MINIMIZED. MATERIALS TRACKED OFF-SITE SHALL BE CLEANED UP AND PROPERLY DISPOSED OF IMMEDIATELY.
19. THE OWNER/DEVELOPER SHALL BE RESPONSIBLE FOR THE REMOVAL OF ALL CONSTRUCTION DEBRIS, DIRT, TRASH, ROCK, SEDIMENT, SOIL, AND SAND THAT MAY ACCUMULATE IN ROADS, STORM DRAINS AND OTHER DRAINAGE CONVEYANCE SYSTEMS AND STORMWATER APPURTENANCES AS A RESULT OF SITE DEVELOPMENT.
20. THE QUANTITY OF MATERIALS STORED ON THE PROJECT SITE SHALL BE LIMITED, AS MUCH AS PRACTICAL, TO THAT QUANTITY REQUIRED TO PERFORM THE WORK IN AN ORDERLY SEQUENCE. ALL MATERIALS STORED ON-SITE SHALL BE STORED IN A NEAT, ORDERLY MANNER, IN THEIR ORIGINAL CONTAINERS, WITH ORIGINAL MANUFACTURER'S LABELS.
21. NO CHEMICAL(S) HAVING THE POTENTIAL TO BE RELEASED IN STORMWATER ARE TO BE STORED OR USED ONSITE UNLESS PERMISSION FOR THE USE OF SUCH CHEMICAL(S) IS GRANTED IN WRITING BY THE ECM ADMINISTRATOR. IN GRANTING APPROVAL FOR THE USE OF SUCH CHEMICAL(S), SPECIAL CONDITIONS AND MONITORING MAY BE REQUIRED.
22. BULK STORAGE OF ALLOWED PETROLEUM PRODUCTS OR OTHER ALLOWED LIQUID CHEMICALS IN EXCESS OF 55 GALLONS SHALL REQUIRE ADEQUATE SECONDARY CONTAINMENT PROTECTION TO CONTAIN ALL SPILLS ONSITE AND TO PREVENT ANY SPILLED MATERIALS FROM ENTERING STATE WATERS, ANY SURFACE OR SUBSURFACE STORM DRAINAGE SYSTEM OR OTHER FACILITIES.
23. NO PERSON SHALL CAUSE THE IMPEDIMENT OF STORMWATER FLOW IN THE CURB AND GUTTER OR DITCH EXCEPT WITH APPROVED SEDIMENT CONTROL MEASURES.
24. OWNER/DEVELOPER AND THEIR AGENTS SHALL COMPLY WITH THE "COLORADO WATER QUALITY CONTROL ACT" (TITLE 25, ARTICLE 8, CRS), AND THE "CLEAN WATER ACT" (33 USC 1344), IN ADDITION TO THE REQUIREMENTS OF THE LAND DEVELOPMENT CODE, DCM VOLUME II AND THE ECM APPENDIX I. ALL APPROPRIATE PERMITS MUST BE OBTAINED BY THE CONTRACTOR PRIOR TO CONSTRUCTION (1041, NPDES, FLOODPLAIN, 404, FUGITIVE DUST, ETC.). IN THE EVENT OF CONFLICTS BETWEEN THESE REQUIREMENTS AND OTHER LAWS, RULES, OR REGULATIONS OF OTHER FEDERAL, STATE, LOCAL, OR COUNTY AGENCIES, THE MOST RESTRICTIVE LAWS, RULES, OR REGULATIONS SHALL APPLY.

- ALL CONSTRUCTION TRAFFIC MUST ENTER/EXIT THE SITE ONLY AT APPROVED CONSTRUCTION ACCESS POINTS.
26. PRIOR TO CONSTRUCTION THE PERMITTEE SHALL VERIFY THE LOCATION OF EXISTING UTILITIES.
27. A WATER SOURCE SHALL BE AVAILABLE ON SITE DURING EARTHWORK OPERATIONS AND SHALL BE UTILIZED AS REQUIRED TO MINIMIZE DUST FROM EARTHWORK EQUIPMENT AND WIND.
28. THE SOILS REPORT FOR THIS SITE HAS BEEN PREPARED BY CTL THOMPSON, DATED SEPTEMBER 19, 2023, AND SHALL BE CONSIDERED A PART OF THESE PLANS.

AT LEAST TEN (10) DAYS PRIOR TO THE ANTICIPATED START OF CONSTRUCTION, FOR PROJECTS THAT WILL DISTURB ONE (1) ACRE OR MORE, THE OWNER OR OPERATOR OF CONSTRUCTION ACTIVITY SHALL SUBMIT A PERMIT APPLICATION FOR STORMWATER DISCHARGE TO THE COLORADO DEPARTMENT OF PUBLIC HEALTH AND ENVIRONMENT, WATER QUALITY DIVISION. THE APPLICATION CONTAINS CERTIFICATION OF COMPLETION OF A STORMWATER MANAGEMENT PLAN (SWMP), OF WHICH THIS GRADING AND EROSION CONTROL PLAN MAY BE A PART. FOR INFORMATION OR APPLICATION MATERIALS CONTACT:

COLORADO DEPARTMENT OF PUBLIC HEALTH AND ENVIRONMENT
WATER QUALITY CONTROL DIVISION
WQCD - PERMITS
4300 CHERRY CREEK DRIVE SOUTH
DENVER, CO 80246-1530
ATTN: PERMITS UNIT

NRCS SOIL SURVEY FOR EL PASO COUNTY

Table with 3 columns: SOIL ID NO., SOIL TYPE, HYDROLOGIC CLASSIFICATION. Rows include 38 JARRE-TECOLOTE COMPLEX (8%-65% SLOPES) B, 71 PRING COARSE SANDY LOAM (3%-8% SLOPES) B, 93 TOMAH-CROWFOOT COMPLEX (8%-15% SLOPES) B.

TIMING

ANTICIPATED STARTING AND COMPLETION TIME PERIOD OF SITE GRADING:
SEPTEMBER 2023 THRU DECEMBER 2023

EXPECTED DATE ON WHICH THE FINAL STABILIZATION WILL BE COMPLETED:
JULY 2024

Update to future dates.

AREAS

TOTAL DISTURBED AREA

ADDRESSED

RECEIVING WATERS

NAME OF RECEIVING WATERS
HAY CREEK (ULTIMATE)

ENGINEER'S NOTES:

THE EXISTING VEGETATION CONSISTS OF MODERATELY DENSE NATIVE GRASSES AND SHRUBS. BASED ON SITE VISITS AND A REVIEW OF AERIAL PHOTOGRAPHY, THE VEGETATIVE COVER AT HAY CREEK VALLEY IS APPROXIMATELY 80%.

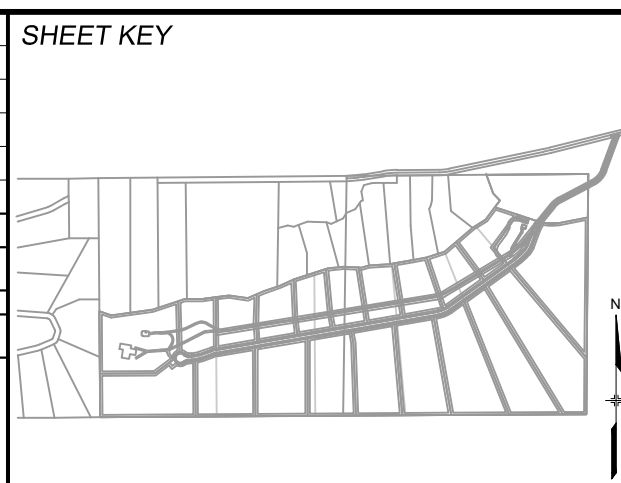
ABBREVIATIONS

Table listing abbreviations for various construction materials and components such as ASSY, BOP, BOV, BOW, CPLNG, (INS), (RED), (STR), CRA, CTRB, DEFLECT, DUCTILE IRON PIPE, ELEVATION, EXISTING, FLANGE, FIRE HYDRANT, GPM, V.P.I. GRADE BREAK, HIGH DEFLECTION, HORIZONTAL, INCLUDES FIRE HYDRANT, LATERAL VALVE, TIE RODS, AND REVERSE ANCHOR, INVERT, LEFT OF CENTER LINE, MINIMUM, MECHANICAL JOINT, NORTH,SOUTH,EAST,WEST PROPERTY LINE, POUNDS PER SQUARE INCH, POLYVINYL CHLORIDE PIPE, REINFORCED CONCRETE PIPE, REDUCER, MU RESTRAINT (I.E. MEGALUG), RIGHT OF CENTER LINE, SHOULDER, SLIP JOINT, SLEEVE, SANITARY SEWER STATION, STORM SEWER, TOP OF PIPE, TOP OF WALL, TYPICAL, WATER LINE.

LEGEND

Legend table showing symbols for PROPERTY BOUNDARY, EXISTING FENCE, EXISTING STORM DRAIN, PROPOSED STORM DRAIN, MATCHLINE, PROPOSED LOT/TRACT LINE, EASEMENT, PROPOSED BUILDING SETBACK, NO BUILD ZONE (SLOPE GREATER THAN 29.99 %).

REFERENCE DRAWINGS table with columns No., DATE, DESCRIPTION, BY. Includes entries for X-TITLE-CD, X-886-PR-SITE, FEBA_13, X-886,066-EX-MAP-1, 164022-01 Hay Creek Road BNSW, X-886-ALTA-SURVEY, Hay Creek BFEs. Also includes COMPUTER FILE MANAGEMENT section with FILE NAME, CTB FILE, and PLOT DATE.



BENCHMARK
PROJECT ELEVATIONS ARE NAVD 88 ELEVATIONS BASED ON AN OPUS DERIVED ELEVATION ON CONTROL POINT 10, A NO. 5 REBAR HAVING AN ELEVATION OF 5769.92.
BASIS OF BEARING
THE SOUTH LINE OF THE NORTHWEST QUARTER OF SECTION 22, TOWNSHIP 15 SOUTH, RANGE 65 WEST OF THE 6TH PRINCIPAL MERIDIAN, COUNTY OF EL PASO, STATE OF COLORADO, BEING MONUMENTED ON THE EASTERLY END BY A 2-1/2" ALUMINUM CAP STAMPED "NOLTE PL2525955 C1/4 S22 T16S, R65W 1999, "AND THE WESTERLY END BY A2-1/2" ALUMINUM CAP STAMPED "SSS PLS 16154 1/4 S21 S22 T15S, R65W 2000, "BEING ASSUMED TO BEAR S89°54'42"W, A DISTANCE OF 2,627.78 FEET.

PREPARED BY: Matrix Excellence by Design logo.

SEAL
PRELIMINARY
THIS DRAWING HAS NOT BEEN APPROVED BY GOVERNING AGENCIES AND IS SUBJECT TO CHANGE
FOR AND ON BEHALF OF MATRIX DESIGN GROUP, INC. PROJECT No. 22.886.076

HAY CREEK VALLEY
EL PASO COUNTY, COLORADO
FINAL GRADING & EROSION CONTROL PLANS
GENERAL NOTES
DESIGNED BY: CVW SCALE: DATE ISSUED: SEPTEMBER 2023 DRAWING No. GN02
DRAWN BY: CVW HORIZ: N/A VERT: N/A SHEET: 03 OF 11

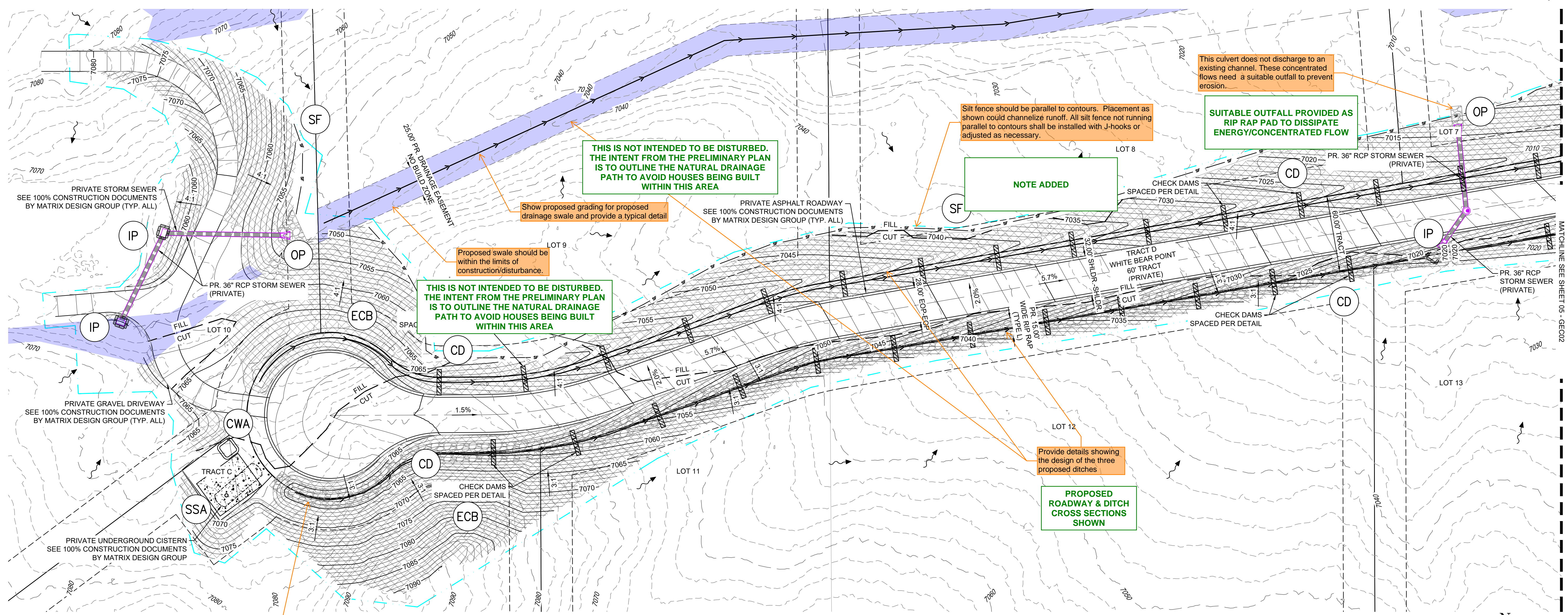


Know what's below. Call before you dig.

GEC Checklist Item j - show FEMA floodplain areas in legend and on plans, clearly define.

ADDRESSED

THE LOCATIONS OF EXISTING ABOVE GROUND AND UNDERGROUND UTILITIES ARE SHOWN IN AN APPROXIMATE WAY ONLY. THE CONTRACTOR SHALL DETERMINE THE EXACT LOCATION OF ALL EXISTING UTILITIES BEFORE COMMENCING WORK. THE CONTRACTOR SHALL BE FULLY RESPONSIBLE FOR ANY AND ALL DAMAGES WHICH MIGHT BE CAUSED BY HIS FAILURE TO EXACTLY LOCATE AND PRESERVE ANY AND ALL ABOVE GROUND AND UNDERGROUND UTILITIES.



THIS IS NOT INTENDED TO BE DISTURBED. THE INTENT FROM THE PRELIMINARY PLAN IS TO OUTLINE THE NATURAL DRAINAGE PATH TO AVOID HOUSES BEING BUILT WITHIN THIS AREA

THIS IS NOT INTENDED TO BE DISTURBED. THE INTENT FROM THE PRELIMINARY PLAN IS TO OUTLINE THE NATURAL DRAINAGE PATH TO AVOID HOUSES BEING BUILT WITHIN THIS AREA

NOTE ADDED

SUITABLE OUTFALL PROVIDED AS RIP RAP PAD TO DISSIPATE ENERGY/CONCENTRATED FLOW

PROPOSED ROADWAY & DITCH CROSS SECTIONS SHOWN

This rock hatching is labeled as VTC in the legend, will these proposed ditches be riprap lined? If so add to the legend

VTC HATCHING REVISED TO DIFFERENTIATE BETWEEN RIP RAP

BMP SEQUENCING	
INITIAL	SILT FENCE, VEHICLE TRACKING, TEMP SEDIMENT BASINS
INTERIM	CHECK DAMS, CONCRETE WASHOUT, INLET/OUTLET PROTECTION, STOCKPILES, STAGING, ROUGH CUT STREET CONTROL
FINAL	EROSION CONTROL BLANKETS, PERMANENT CONTROL MEASURE(S)

seeding/mulching also should be included in the final stage and in the legend. All disturbed areas should be seeded.

ADDRESSED

EROSION CONTROL LEGEND

	(SF) SILT FENCE		(TSB) TEMPORARY SEDIMENT BASIN		EXISTING CONTOURS
	(ECB) EROSION CONTROL BLANKET		(CWA) CONCRETE WASHOUT		DRAINAGE SWALE SLOPE LABEL
	(OP) OUTLET PROTECTION		(SSA) STOCKPILE MANAGEMENT / STABILIZED STAGING AREA		OVERLAND FLOW
	(IP) INLET PROTECTION		(HP) (LP) HIGH POINT / LOW POINT		LIMITS OF DISTURBANCE/ CONSTRUCTION SITE BOUNDARY
	(VTC) VEHICLE TRACKING CONTROL				PROJECT BOUNDARY
					OVERFLOW CUT/FILL LINE

Show check dams in legend.

ADDRESSED

NOTED, SIGNATURES & STAMPS WILL BE PROVIDED UPON PRELIMINARY ACCEPTANCE

GEC Checklist Item ee - Plan must be certified by a Colorado Registered PE prior to approval.

N

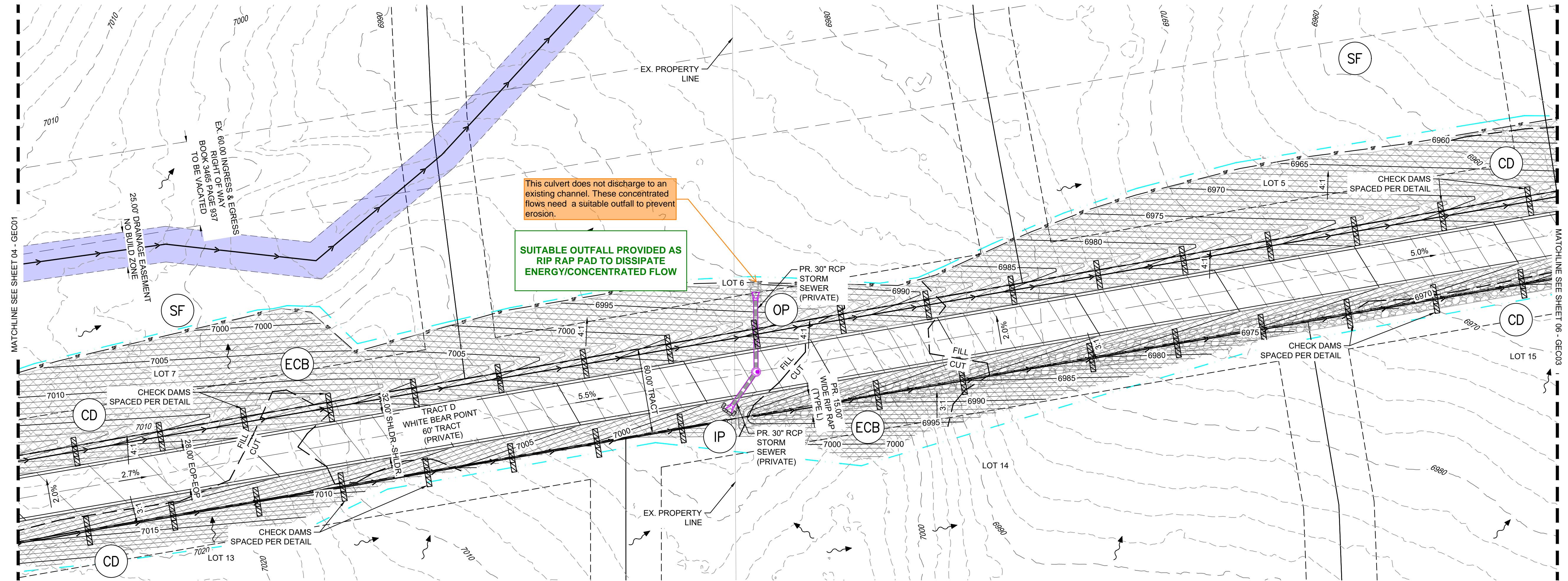
GRAPHIC SCALE
(IN FEET)
1 inch = 40 ft.

REFERENCE DRAWINGS X-TITLE-CD X-886-PR-SITE FEMA_XS X-886-066-EX-MAP-1 164022-01 Hay Creek Road BNDY X-886-ALTA-SURVEY Hay Creek BFEs 2023-02-28 TOPO 164022-01	COMPUTER FILE MANAGEMENT FILE NAME: S:\22.886.076 Hay Creek-Forest Manor-O'Leary Properties\500 CADD\504 Plan Sets\Construction Plans\GEC Plan\GEC01.dwg CTB FILE: Matrix.ctb PLOT DATE: 9/22/2023 2:33 PM THIS DRAWING IS CURRENT AS OF PLOT DATE AND MAY BE SUBJECT TO CHANGE.		SHEET KEY 	BENCHMARK PROJECT ELEVATIONS ARE NAVD 88 ELEVATIONS BASED ON AN OPUS DERIVED ELEVATION ON CONTROL POINT 10, A NO. 5 REBAR HAVING AN ELEVATION OF 5769.92.	BASIS OF BEARING THE SOUTH LINE OF THE NORTHWEST QUARTER OF SECTION 22, TOWNSHIP 15 SOUTH, RANGE 65 WEST OF THE 6TH PRINCIPAL MERIDIAN, COUNTY OF EL PASO, STATE OF COLORADO, BEING MONUMENTED ON THE EASTERLY END BY A 2-1/2" ALUMINUM CAP STAMPED "NOLTE PL25955 C1/4 S22 T16S, R65W 1999," AND THE WESTERLY END BY A 2-1/2" ALUMINUM CAP STAMPED "SSS PLS 16154 1/4 S21 S22 T15S, R65W 2000," BEING ASSUMED TO BEAR S89°54'2"W, A DISTANCE OF 2,627.78 FEET.	SEAL <div style="border: 1px solid black; padding: 5px; display: inline-block;"> PRELIMINARY THIS DRAWING HAS NOT BEEN APPROVED BY GOVERNING AGENCIES AND IS SUBJECT TO CHANGE </div>	HAY CREEK VALLEY EL PASO COUNTY, COLORADO FINAL GRADING & EROSION CONTROL PLANS GRADING & EROSION CONTROL PLAN												
	<table border="1"> <thead> <tr> <th>No.</th> <th>DATE</th> <th>DESCRIPTION</th> <th>BY</th> </tr> </thead> <tbody> <tr> <td colspan="4" style="text-align: center;">REVISIONS</td> </tr> </tbody> </table>	No.	DATE	DESCRIPTION	BY	REVISIONS				PREPARED BY: 	FOR AND ON BEHALF OF: MATRIX DESIGN GROUP, INC. PROJECT No. 22.886.076	<table border="1"> <tr> <td>DESIGNED BY: CVW</td> <td>SCALE: HORIZ 1"=40'</td> <td>DATE ISSUED: SEPTEMBER 2023</td> <td>DRAWING No. GEC01</td> </tr> <tr> <td>CHECKED BY: JAO</td> <td>VERT. N/A</td> <td>SHEET 04 OF 11</td> <td></td> </tr> </table>	DESIGNED BY: CVW	SCALE: HORIZ 1"=40'	DATE ISSUED: SEPTEMBER 2023	DRAWING No. GEC01	CHECKED BY: JAO	VERT. N/A	SHEET 04 OF 11
No.	DATE	DESCRIPTION	BY																
REVISIONS																			
DESIGNED BY: CVW	SCALE: HORIZ 1"=40'	DATE ISSUED: SEPTEMBER 2023	DRAWING No. GEC01																
CHECKED BY: JAO	VERT. N/A	SHEET 04 OF 11																	



Know what's below.
Call before you dig.

THE LOCATIONS OF EXISTING ABOVE GROUND AND UNDERGROUND UTILITIES ARE SHOWN IN AN APPROXIMATE WAY ONLY. THE CONTRACTOR SHALL DETERMINE THE EXACT LOCATION OF ALL EXISTING UTILITIES BEFORE COMMENCING WORK. THE CONTRACTOR SHALL BE FULLY RESPONSIBLE FOR ANY AND ALL DAMAGES WHICH MIGHT BE CAUSED BY HIS FAILURE TO EXACTLY LOCATE AND PRESERVE ANY AND ALL ABOVE GROUND AND UNDERGROUND UTILITIES.



This culvert does not discharge to an existing channel. These concentrated flows need a suitable outfall to prevent erosion.

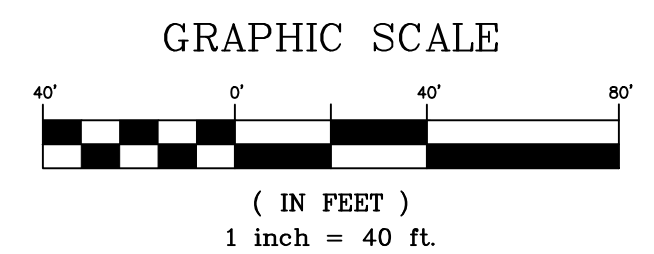
SUITABLE OUTFALL PROVIDED AS RIP RAP PAD TO DISSIPATE ENERGY/CONCENTRATED FLOW

BMP SEQUENCING	
INITIAL	SILT FENCE, VEHICLE TRACKING, TEMP SEDIMENT BASINS
INTERIM	CHECK DAMS, CONCRETE WASHOUT, INLET/OUTLET PROTECTION, STOCKPILES, STAGING, ROUGH CUT STREET CONTROL
FINAL	EROSION CONTROL BLANKETS, PERMANENT CONTROL MEASURE(S)

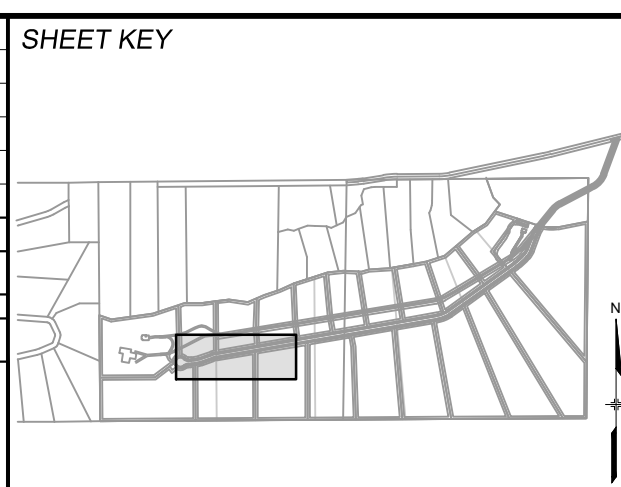
- SF SILT FENCE
- ECB EROSION CONTROL BLANKET
- OP OUTLET PROTECTION
- IP INLET PROTECTION
- VTC VEHICLE TRACKING CONTROL

EROSION CONTROL LEGEND

- TSB TEMPORARY SEDIMENT BASIN
- CWA CONCRETE WASHOUT
- SSA STOCKPILE MANAGEMENT / STABILIZED STAGING AREA
- HP HIGH POINT / LOW POINT
- LP LOW POINT / HIGH POINT
- PROPOSED CONTOURS
- EXISTING CONTOURS
- DRAINAGE SWALE
- SLOPE LABEL
- OVERLAND FLOW
- LIMITS OF DISTURBANCE/ CONSTRUCTION SITE BOUNDARY
- PROJECT BOUNDARY LINE
- OVERFLOW ROUTE
- CUT/FILL LINE



No.	DATE	DESCRIPTION	BY
REVISIONS			
COMPUTER FILE MANAGEMENT			
FILE NAME: S:\22.886.076 Hay Creek-Forest Manor-O'Leary Properties\500 CADD\504 Plan Sets\Construction Plans\GEC Plan\GEC01.dwg			
CTB FILE: Matrix.ctb			
PLOT DATE: 9/22/2023 2:33 PM			
THIS DRAWING IS CURRENT AS OF PLOT DATE AND MAY BE SUBJECT TO CHANGE.			



BENCHMARK
PROJECT ELEVATIONS ARE NAVD 88 ELEVATIONS BASED ON AN OPUS DERIVED ELEVATION ON CONTROL POINT 10, A NO. 5 REBAR HAVING AN ELEVATION OF 5769.92.

BASIS OF BEARING
THE SOUTH LINE OF THE NORTHWEST QUARTER OF SECTION 22, TOWNSHIP 15 SOUTH, RANGE 65 WEST OF THE 6TH PRINCIPAL MERIDIAN, COUNTY OF EL PASO, STATE OF COLORADO, BEING MONUMENTED ON THE EASTERLY END BY A 2-1/2" ALUMINUM CAP STAMPED "NOLTE PLS25955 C1/4 S22 T16S, R65W 1999," AND THE WESTERLY END BY A 2-1/2" ALUMINUM CAP STAMPED "SSS PLS 16154 1/4 S21 S22 T15S, R65W 2000," BEING ASSUMED TO BEAR S89°54'42"W, A DISTANCE OF 2,627.78 FEET.

PREPARED BY:
Matrix
Excellence by Design

SEAL
PRELIMINARY
THIS DRAWING HAS NOT BEEN APPROVED BY GOVERNING AGENCIES AND IS SUBJECT TO CHANGE

FOR AND ON BEHALF OF
MATRIX DESIGN GROUP, INC.
PROJECT No. 22.886.076

HAY CREEK VALLEY
EL PASO COUNTY, COLORADO
FINAL GRADING & EROSION CONTROL PLANS

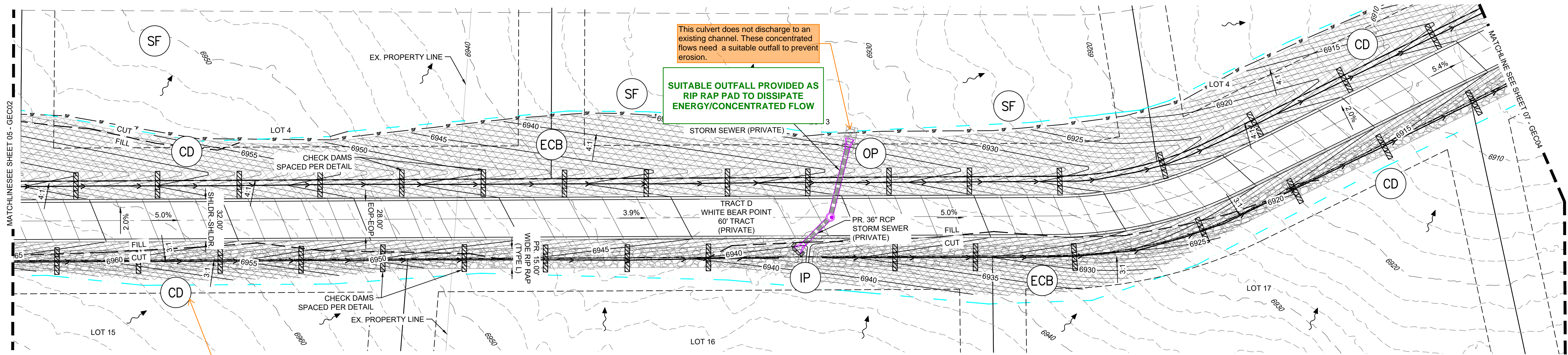
GRADING & EROSION CONTROL PLAN

DESIGNED BY: CVW	SCALE: HORIZ 1" = 40'	DATE ISSUED: SEPTEMBER 2023	DRAWING No. GEC02
DRAWN BY: CVW	VERT. N/A	SHEET 05 OF 11	
CHECKED BY: JAO			



Know what's below.
Call before you dig.

THE LOCATIONS OF EXISTING ABOVE GROUND AND UNDERGROUND UTILITIES ARE SHOWN IN AN APPROXIMATE WAY ONLY. THE CONTRACTOR SHALL DETERMINE THE EXACT LOCATION OF ALL EXISTING UTILITIES BEFORE COMMENCING WORK. THE CONTRACTOR SHALL BE FULLY RESPONSIBLE FOR ANY AND ALL DAMAGES WHICH MIGHT BE CAUSED BY HIS FAILURE TO EXACTLY LOCATE AND PRESERVE ANY AND ALL ABOVE GROUND AND UNDERGROUND UTILITIES.



This culvert does not discharge to an existing channel. These concentrated flows need a suitable outfall to prevent erosion.
SUITABLE OUTFALL PROVIDED AS RIP RAP PAD TO DISSIPATE ENERGY/CONCENTRATED FLOW

Check dams to be installed a minimum of every 1.5' of vertical fall. Notate spacing and/or include a table for multiple slopes, based on your selected detail, per the example table shown below.

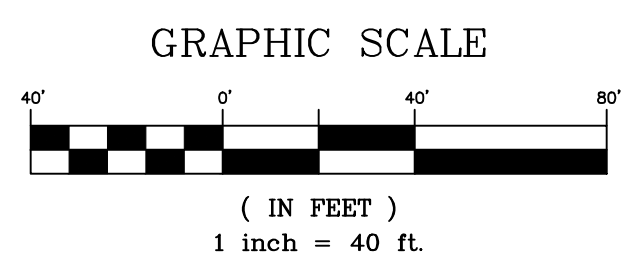
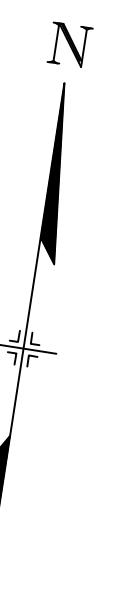
CHECK DAMS OF HEIGHT = 3.5' ESTABLISHED

Space temporary check dams in ditches per the following table:							
Slope of Ditch Flow Line	2%	3%	4%	5%	6%	Reference	Type
Spacing (ft) (H = 0.5ft)	25	16.7	12.5	10	8.3	CDOT, MHFD, DCMv2	SCL (9" Straw Wattle, buried 3")
Spacing (ft) (H = 1.5ft)	75	50	37.5	30	25	MHFD	Rock
Spacing (ft) (H = 2.0ft)	100	67	50	40	33	CDOT	Rock
Spacing (ft) (H = to convey 2-yr flow)	TBD	TBD	TBD	TBD	TBD	DCMv2	Rock

BMP SEQUENCING	
INITIAL	SILT FENCE, VEHICLE TRACKING, TEMP SEDIMENT BASINS
INTERIM	CHECK DAMS, CONCRETE WASHOUT, INLET/OUTLET PROTECTION, STOCKPILES, STAGING, ROUGH CUT STREET CONTROL
FINAL	EROSION CONTROL BLANKETS, PERMANENT CONTROL MEASURE(S)

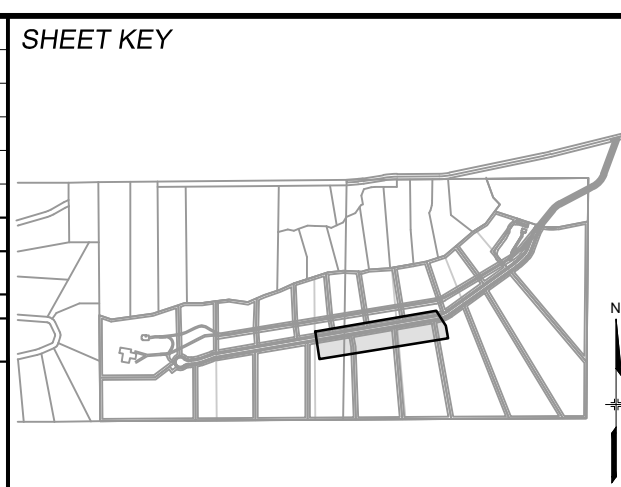
EROSION CONTROL LEGEND

- SF SILT FENCE
- ECB EROSION CONTROL BLANKET
- OP OUTLET PROTECTION
- IP INLET PROTECTION
- VTC VEHICLE TRACKING CONTROL
- TSB TEMPORARY SEDIMENT BASIN
- CWA CONCRETE WASHOUT
- SSA STOCKPILE MANAGEMENT / STABILIZED STAGING AREA
- HP HP HIGH POINT / LOW POINT
- LP LP LOW POINT
- EXISTING CONTOURS
- DRAINAGE SWALE
- SLOPE LABEL
- OVERLAND FLOW
- LIMITS OF DISTURBANCE/ CONSTRUCTION SITE BOUNDARY
- PROJECT BOUNDARY LINE
- OVERFLOW ROUTE
- CUT/FILL LINE



No.	DATE	DESCRIPTION	BY
REVISIONS			

COMPUTER FILE MANAGEMENT
 FILE NAME: S:\22.886.076 Hay Creek-Forest Manor-O'Leary Properties\500 CADD\504 Plan Sets\Construction Plans\GEC Plan\GEC01.dwg
 CTB FILE: Matrix.ctb
 PLOT DATE: 9/22/2023 2:33 PM
 THIS DRAWING IS CURRENT AS OF PLOT DATE AND MAY BE SUBJECT TO CHANGE.



BENCHMARK
 PROJECT ELEVATIONS ARE NAVD 88 ELEVATIONS BASED ON AN OPUS DERIVED ELEVATION ON CONTROL POINT 10, A NO. 5 REBAR HAVING AN ELEVATION OF 5769.92.

BASIS OF BEARING
 THE SOUTH LINE OF THE NORTHWEST QUARTER OF SECTION 22, TOWNSHIP 15 SOUTH, RANGE 65 WEST OF THE 6TH PRINCIPAL MERIDIAN, COUNTY OF EL PASO, STATE OF COLORADO, BEING MONUMENTED ON THE EASTERLY END BY A 2-1/2" ALUMINUM CAP STAMPED "NOLTE PLS25955 C1/4 S22 T16S, R65W 1999," AND THE WESTERLY END BY A 2-1/2" ALUMINUM CAP STAMPED "SSS PLS 16154 1/4 S21 S22 T15S, R65W 2000," BEING ASSUMED TO BEAR S89°54'42"W, A DISTANCE OF 2,627.78 FEET.

PREPARED BY:
Matrix
 Excellence by Design

SEAL
PRELIMINARY
 THIS DRAWING HAS NOT BEEN APPROVED BY GOVERNING AGENCIES AND IS SUBJECT TO CHANGE

FOR AND ON BEHALF OF
 MATRIX DESIGN GROUP, INC.
 PROJECT No. 22.886.076

HAY CREEK VALLEY
 EL PASO COUNTY, COLORADO
 FINAL GRADING & EROSION CONTROL PLANS

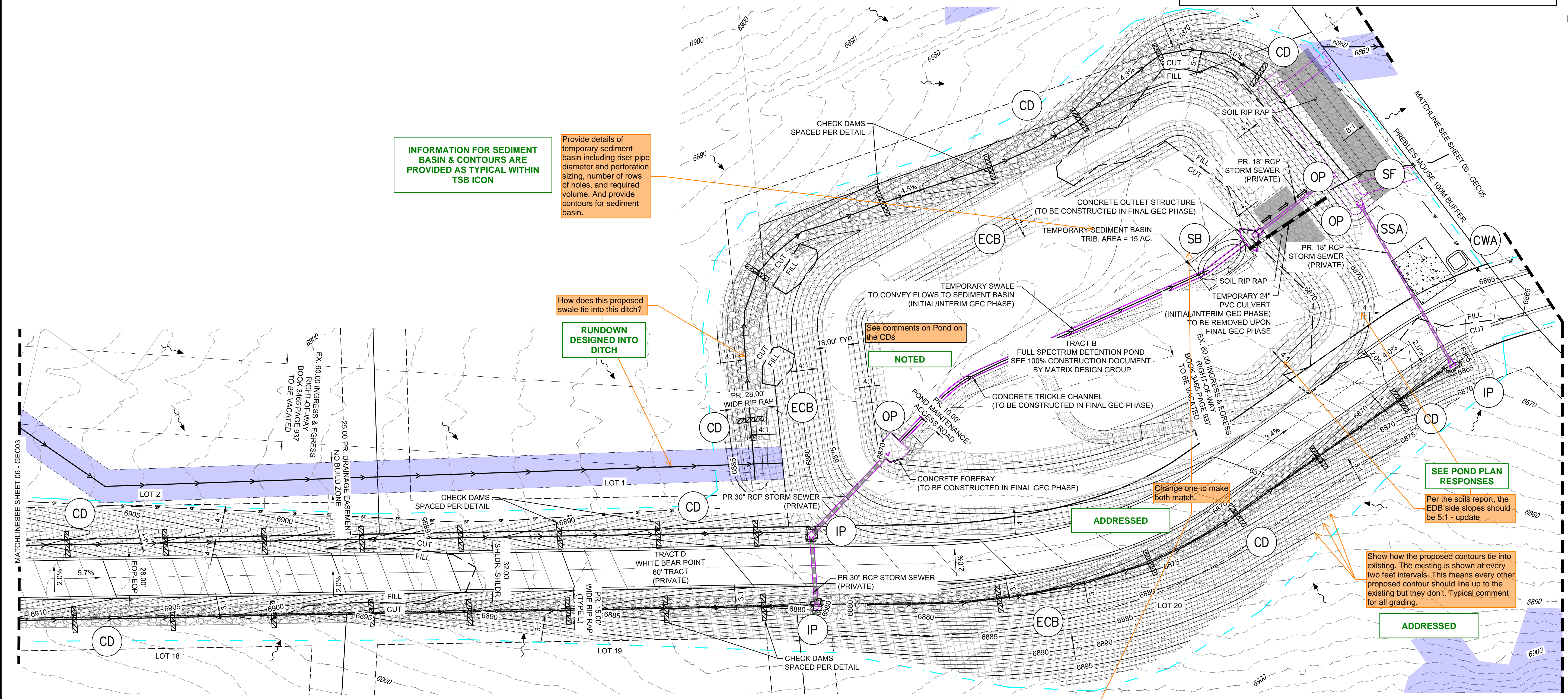
GRADING & EROSION CONTROL PLAN

DESIGNED BY: CVW	SCALE: HORIZ. 1" = 40'	DATE ISSUED: SEPTEMBER 2023	DRAWING No. GEC03
DRAWN BY: CVW	VERT. N/A	SHEET 06 OF 11	
CHECKED BY: JAO			



Know what's below. Call before you dig.

THE LOCATIONS OF EXISTING ABOVE GROUND AND UNDERGROUND UTILITIES ARE SHOWN IN AN APPROXIMATE WAY ONLY. THE CONTRACTOR SHALL DETERMINE THE EXACT LOCATION OF ALL EXISTING UTILITIES BEFORE COMMENCING WORK. THE CONTRACTOR SHALL BE FULLY RESPONSIBLE FOR ANY AND ALL DAMAGES WHICH MIGHT BE CAUSED BY HIS FAILURE TO EXACTLY LOCATE AND PRESERVE ANY AND ALL ABOVE GROUND AND UNDERGROUND UTILITIES.



INFORMATION FOR SEDIMENT BASIN & CONTOURS ARE PROVIDED AS TYPICAL WITHIN TSB ICON

Provide details of temporary sediment basin including riser pipe diameter and perforation sizing, number of rows of holes, and required volume. And provide contours for sediment basin.

How does this proposed swale tie into this ditch?
RUNDOWN DESIGNED INTO DITCH

See comments on Pond on the CDs
NOTED

Change one to make both match.
ADDRESSED

SEE POND PLAN RESPONSES

Per the soils report, the EDB side slopes should be 5:1 - update

Show how the proposed contours tie into existing. The existing is shown at every two feet intervals. This means every other proposed contour should line up to the existing but they don't. Typical comment for all grading.
ADDRESSED

BMP SEQUENCING	
INITIAL	SILT FENCE, VEHICLE TRACKING, TEMP SEDIMENT BASINS
INTERIM	CHECK DAMS, CONCRETE WASHOUT, INLET/OUTLET PROTECTION, STOCKPILES, STAGING, ROUGH CUT STREET CONTROL
FINAL	EROSION CONTROL BLANKETS, PERMANENT CONTROL MEASURE(S)

EROSION CONTROL LEGEND

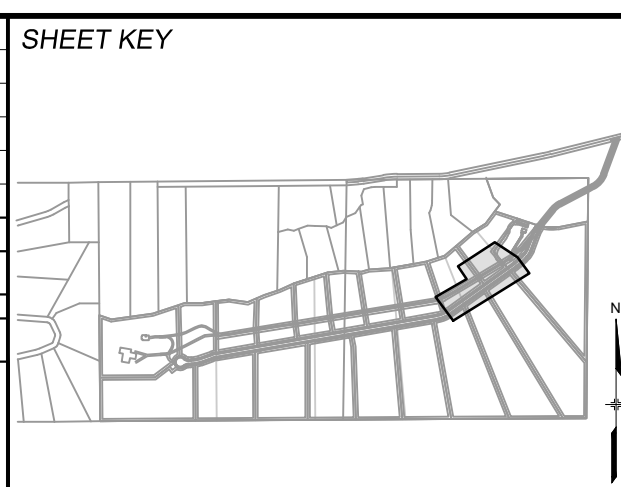
	SF	SILT FENCE		TSB	TEMPORARY SEDIMENT BASIN
	ECB	EROSION CONTROL BLANKET		CWA	CONCRETE WASHOUT
	OP	OUTLET PROTECTION		SSA	STOCKPILE MANAGEMENT / STABILIZED STAGING AREA
	IP	INLET PROTECTION		HP	HIGH POINT / LOW POINT
	VTC	VEHICLE TRACKING CONTROL		LP	LOW POINT

	EXISTING CONTOURS
	DRAINAGE SWALE SLOPE LABEL
	OVERLAND FLOW
	LIMITS OF DISTURBANCE/ CONSTRUCTION SITE BOUNDARY
	PROJECT BOUNDARY LINE
	OVERFLOW ROUTE
	CUT/FILL LINE

GRAPHIC SCALE
(IN FEET)
1 inch = 40 ft.

No.	DATE	DESCRIPTION REVISIONS	BY

COMPUTER FILE MANAGEMENT
FILE NAME: S:\22.886.076 Hay Creek-Forest Manor-O'Leary Properties\500 CADD\504 Plan Sets\Construction Plans\GEC Plan\GEC01.dwg
CTB FILE: Matrix.ctb
PLOT DATE: 9/22/2023 2:33 PM
THIS DRAWING IS CURRENT AS OF PLOT DATE AND MAY BE SUBJECT TO CHANGE.



BENCHMARK
PROJECT ELEVATIONS ARE NAVD 88 ELEVATIONS BASED ON AN OPUS DERIVED ELEVATION ON CONTROL POINT 10, A NO. 5 REBAR HAVING AN ELEVATION OF 5769.92.

BASIS OF BEARING
THE SOUTH LINE OF THE NORTHWEST QUARTER OF SECTION 22, TOWNSHIP 15 SOUTH, RANGE 65 WEST OF THE 6TH PRINCIPAL MERIDIAN, COUNTY OF EL PASO, STATE OF COLORADO, BEING MONUMENTED ON THE EASTERLY END BY A 2-1/2" ALUMINUM CAP STAMPED "NOLTE PL325955 C1/4 S22 T16S, R65W 1999, "AND THE WESTERLY END BY A 2-1/2" ALUMINUM CAP STAMPED "SSS PLS 16154 1/4 S21 S22 T15S, R65W 2000, "BEING ASSUMED TO BEAR S89°54'42"W, A DISTANCE OF 2,627.78 FEET.

PREPARED BY:
Matrix
Excellence by Design

SEAL
PRELIMINARY
THIS DRAWING HAS NOT BEEN APPROVED BY GOVERNING AGENCIES AND IS SUBJECT TO CHANGE

FOR AND ON BEHALF OF
MATRIX DESIGN GROUP, INC.
PROJECT No. 22.886.076

HAY CREEK VALLEY
EL PASO COUNTY, COLORADO
FINAL GRADING & EROSION CONTROL PLANS

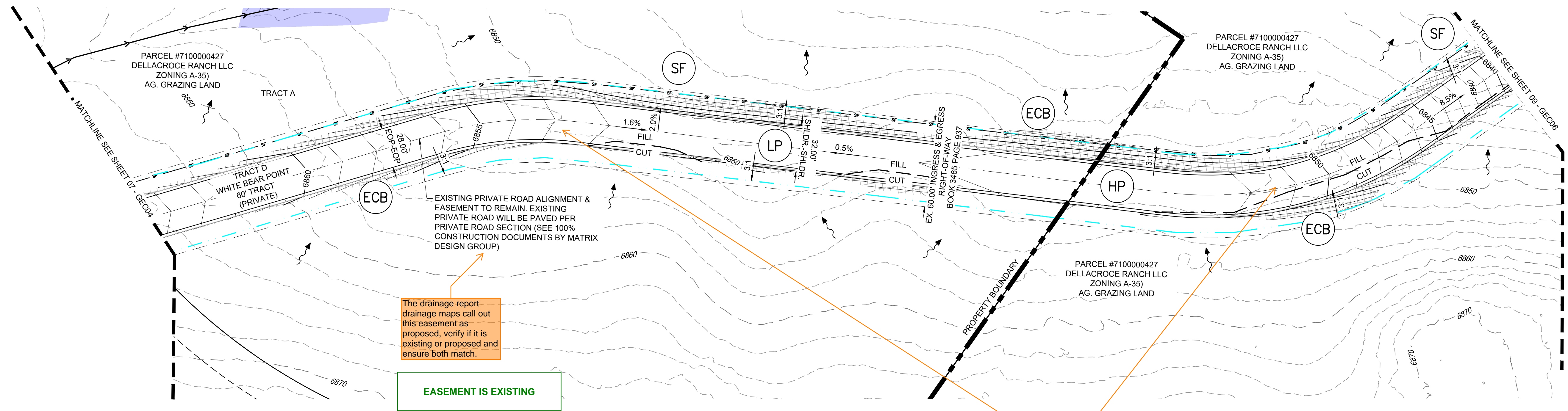
GRADING & EROSION CONTROL PLAN

DESIGNED BY: CVW	SCALE: HORIZ 1"=40'	DATE ISSUED: SEPTEMBER 2023	DRAWING No. GEC04
DRAWN BY: CVW	VERT. N/A	SHEET 07 OF 11	
CHECKED BY: JAO			



Know what's below.
Call before you dig.

THE LOCATIONS OF EXISTING ABOVE GROUND AND UNDERGROUND UTILITIES ARE SHOWN IN AN APPROXIMATE WAY ONLY. THE CONTRACTOR SHALL DETERMINE THE EXACT LOCATION OF ALL EXISTING UTILITIES BEFORE COMMENCING WORK. THE CONTRACTOR SHALL BE FULLY RESPONSIBLE FOR ANY AND ALL DAMAGES WHICH MIGHT BE CAUSED BY HIS FAILURE TO EXACTLY LOCATE AND PRESERVE ANY AND ALL ABOVE GROUND AND UNDERGROUND UTILITIES.



The drainage report drainage maps call out this easement as proposed, verify if it is existing or proposed and ensure both match.

EASEMENT IS EXISTING

How is this pavement and grading accounted for regarding treatment?

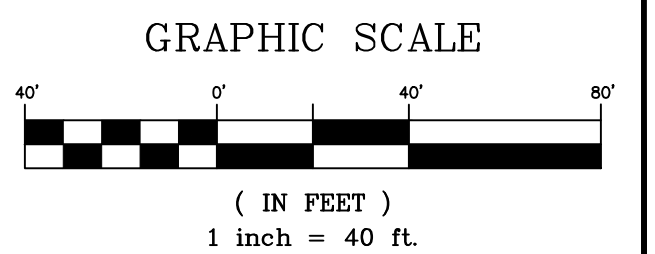
REFER TO FDR EXHIBITS FOR RUNOFF REDUCTION PLANNING & TREATMENT AREAS

BMP SEQUENCING	
INITIAL	SILT FENCE, VEHICLE TRACKING, TEMP SEDIMENT BASINS
INTERIM	CHECK DAMS, CONCRETE WASHOUT, INLET/OUTLET PROTECTION, STOCKPILES, STAGING, ROUGH CUT STREET CONTROL
FINAL	EROSION CONTROL BLANKETS, PERMANENT CONTROL MEASURE(S)

- SF SILT FENCE
- ECB EROSION CONTROL BLANKET
- OP OUTLET PROTECTION
- IP INLET PROTECTION
- VTC VEHICLE TRACKING CONTROL

EROSION CONTROL LEGEND

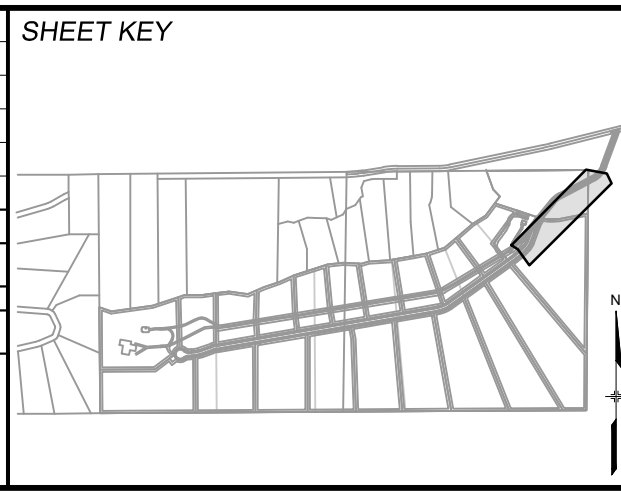
- TSB TEMPORARY SEDIMENT BASIN
- CWA CONCRETE WASHOUT
- SSA STOCKPILE MANAGEMENT / STABILIZED STAGING AREA
- HP HIGH POINT / LOW POINT
- LP PROPOSED CONTOURS
- 5975 EXISTING CONTOURS
- 4:1 DRAINAGE SWALE
- OVERLAND FLOW
- LIMITS OF DISTURBANCE/ CONSTRUCTION SITE BOUNDARY
- PROJECT BOUNDARY LINE
- OVERFLOW ROUTE
- CUT/FILL LINE



No.	DATE	DESCRIPTION	BY
REVISIONS			

COMPUTER FILE MANAGEMENT

FILE NAME: S:\22.886.076 Hay Creek-Forest Manor-O'Leary Properties\500 CADD\504 Plan Sets\Construction Plans\GEC Plan\GEC01.dwg
 CTB FILE: Matrix.ctb
 PLOT DATE: 9/22/2023 2:33 PM
 THIS DRAWING IS CURRENT AS OF PLOT DATE AND MAY BE SUBJECT TO CHANGE.



BENCHMARK
 PROJECT ELEVATIONS ARE NAVD 88 ELEVATIONS BASED ON AN OPUS DERIVED ELEVATION ON CONTROL POINT 10, A NO. 5 REBAR HAVING AN ELEVATION OF 5769.92.

BASIS OF BEARING
 THE SOUTH LINE OF THE NORTHWEST QUARTER OF SECTION 22, TOWNSHIP 15 SOUTH, RANGE 65 WEST OF THE 6TH PRINCIPAL MERIDIAN, COUNTY OF EL PASO, STATE OF COLORADO, BEING MONUMENTED ON THE EASTERLY END BY A 2-1/2" ALUMINUM CAP STAMPED "NOLTE PLS25955 C1/4 S22 T16S, R65W 1999, "AND THE WESTERLY END BY A2-1/2" ALUMINUM CAP STAMPED "SSS PLS 16154 1/4 S21 S22 T15S, R65W 2000, "BEING ASSUMED TO BEAR S89°54'42"W, A DISTANCE OF 2,627.78 FEET.

SEAL

PRELIMINARY
 THIS DRAWING HAS NOT BEEN APPROVED BY GOVERNING AGENCIES AND IS SUBJECT TO CHANGE

FOR AND ON BEHALF OF
 MATRIX DESIGN GROUP, INC.
 PROJECT No. 22.886.076

DESIGNED BY: CVW
 DRAWN BY: CVW
 CHECKED BY: JAO

SCALE
 HORIZ. 1" = 40'
 VERT. N/A

DATE ISSUED: SEPTEMBER 2023
 SHEET 08 OF 11

DRAWING No. GEC05

HAY CREEK VALLEY
 EL PASO COUNTY, COLORADO
 FINAL GRADING & EROSION CONTROL PLANS

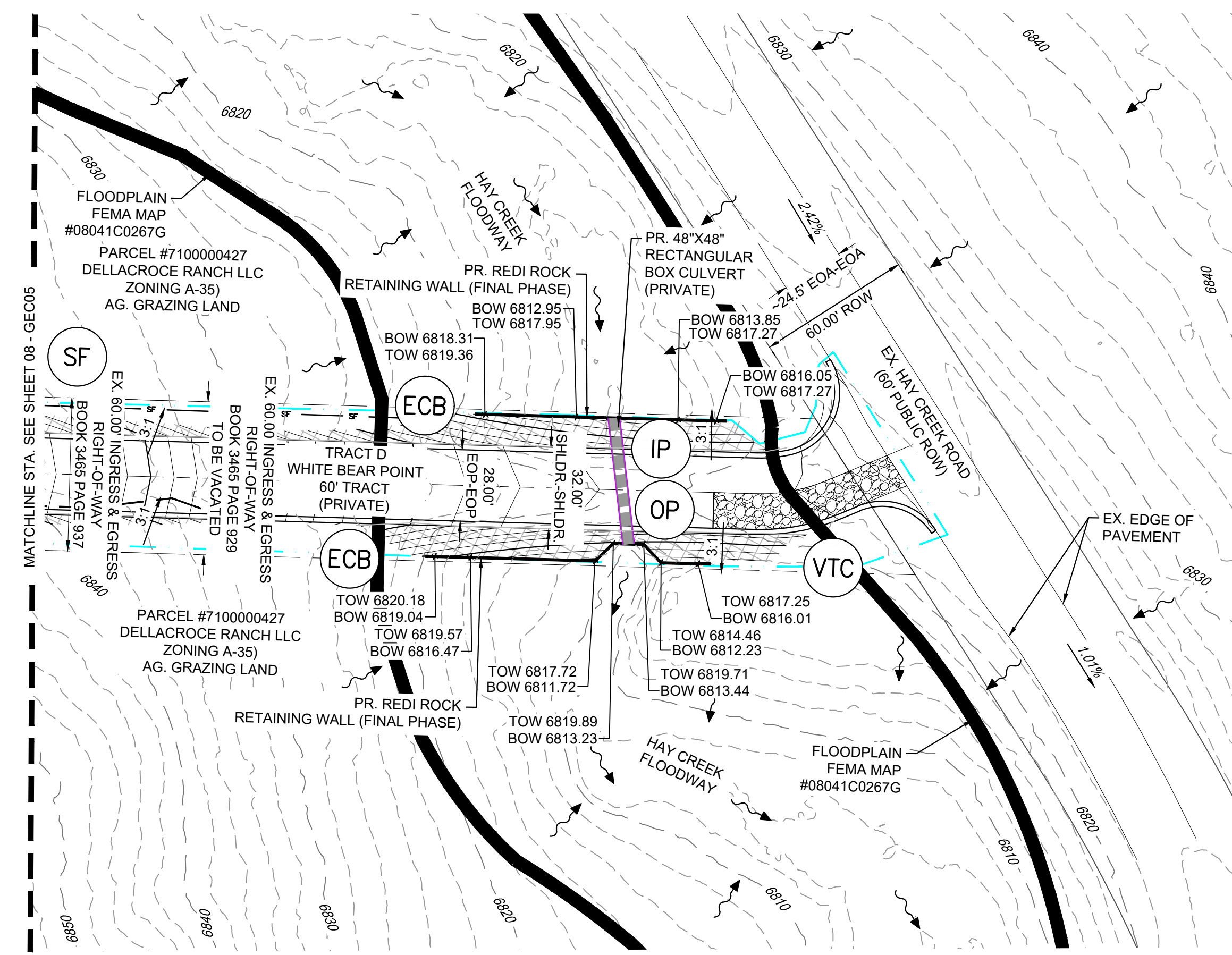
GRADING & EROSION CONTROL PLAN



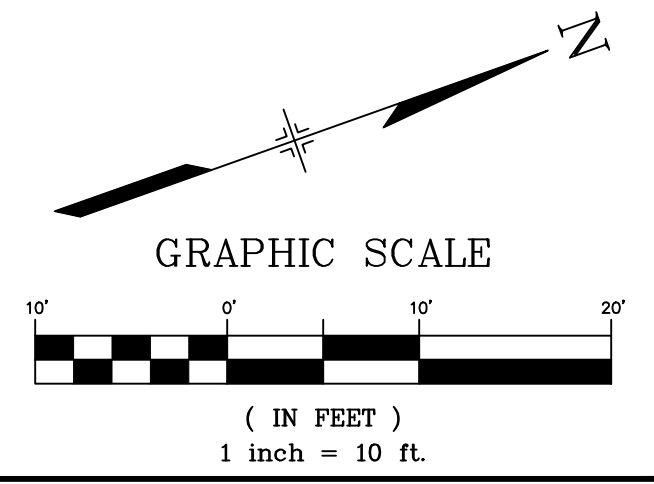
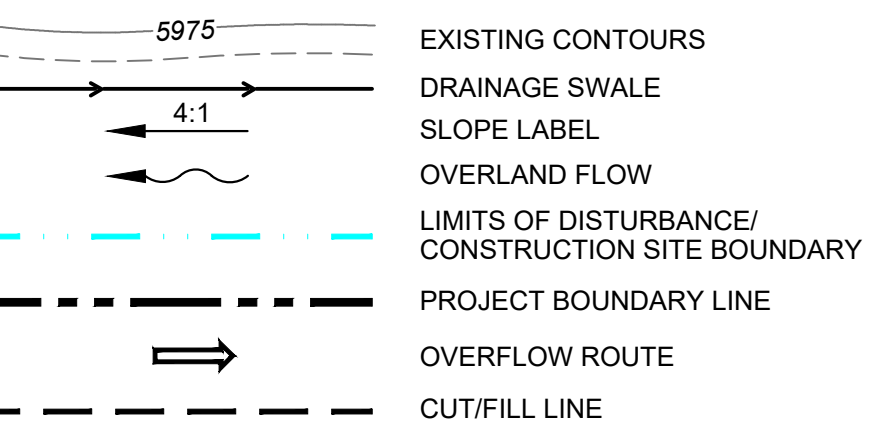
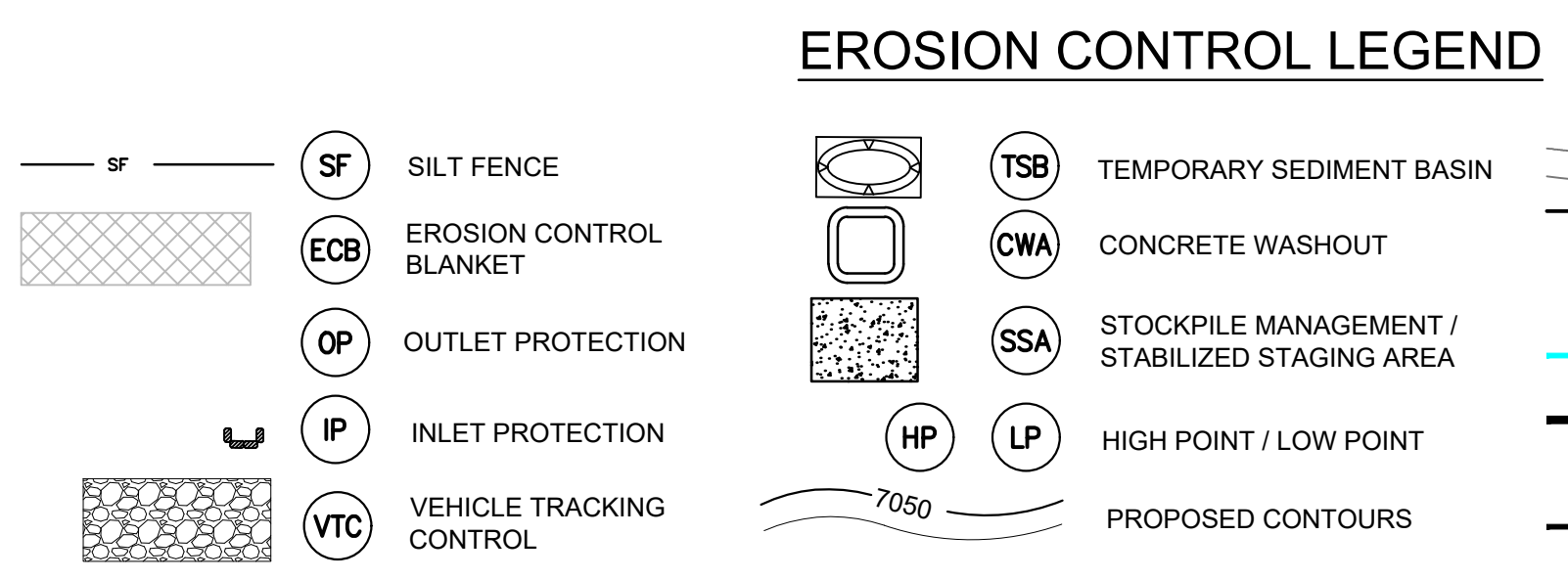


Know what's below.
Call before you dig.

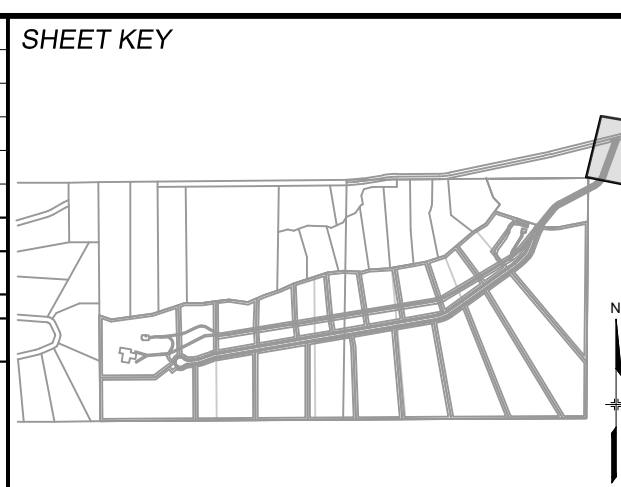
THE LOCATIONS OF EXISTING ABOVE GROUND AND UNDERGROUND UTILITIES ARE SHOWN IN AN APPROXIMATE WAY ONLY. THE CONTRACTOR SHALL DETERMINE THE EXACT LOCATION OF ALL EXISTING UTILITIES BEFORE COMMENCING WORK. THE CONTRACTOR SHALL BE FULLY RESPONSIBLE FOR ANY AND ALL DAMAGES WHICH MIGHT BE CAUSED BY HIS FAILURE TO EXACTLY LOCATE AND PRESERVE ANY AND ALL ABOVE GROUND AND UNDERGROUND UTILITIES.



BMP SEQUENCING	
INITIAL	SILT FENCE, VEHICLE TRACKING, TEMP SEDIMENT BASINS
INTERIM	CHECK DAMS, CONCRETE WASHOUT, INLET/OUTLET PROTECTION, STOCKPILES, STAGING, ROUGH CUT STREET CONTROL
FINAL	EROSION CONTROL BLANKETS, PERMANENT CONTROL MEASURE(S)



NO.	DATE	DESCRIPTION	BY
REVISIONS			
COMPUTER FILE MANAGEMENT			
FILE NAME: S:\22.886.076 Hay Creek-Forest Manor-O'Leary Properties\500 CADD\504 Plan Sets\Construction Plans\GEC Plan\GEC01.dwg			
CTB FILE: Matrix.ctb			
PLOT DATE: 9/22/2023 2:34 PM			
THIS DRAWING IS CURRENT AS OF PLOT DATE AND MAY BE SUBJECT TO CHANGE.			



BENCHMARK
PROJECT ELEVATIONS ARE NAVD 88 ELEVATIONS BASED ON AN OPUS DERIVED ELEVATION ON CONTROL POINT 10, A NO. 5 REBAR HAVING AN ELEVATION OF 5769.92.

BASIS OF BEARING
THE SOUTH LINE OF THE NORTHWEST QUARTER OF SECTION 22, TOWNSHIP 15 SOUTH, RANGE 65 WEST OF THE 6TH PRINCIPAL MERIDIAN, COUNTY OF EL PASO, STATE OF COLORADO, BEING MONUMENTED ON THE EASTERLY END BY A 2-1/2" ALUMINUM CAP STAMPED "NOLTE PLS25955 C1/4 S22 T16S, R65W 1999, "AND THE WESTERLY END BY A2-1/2" ALUMINUM CAP STAMPED "SSS PLS 16154 1/4 S21 S22 T15S, R65W 2000, "BEING ASSUMED TO BEAR S89°54'42"W, A DISTANCE OF 2,627.78 FEET.

PREPARED BY:
 Matrix
Excellence by Design

SEAL
PRELIMINARY
THIS DRAWING HAS NOT BEEN APPROVED BY GOVERNING AGENCIES AND IS SUBJECT TO CHANGE

HAY CREEK VALLEY			
EL PASO COUNTY, COLORADO FINAL GRADING & EROSION CONTROL PLANS			
GRADING & EROSION CONTROL PLAN			
DESIGNED BY: CVW	SCALE: HORIZ. 1" = 40'	DATE ISSUED: SEPTEMBER 2023	DRAWING No. GEC06
DRAWN BY: CVW	VERT. N/A	SHEET 09 OF 11	
CHECKED BY: JAO			

