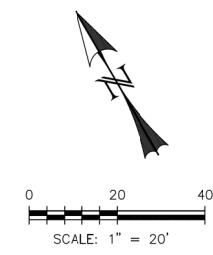
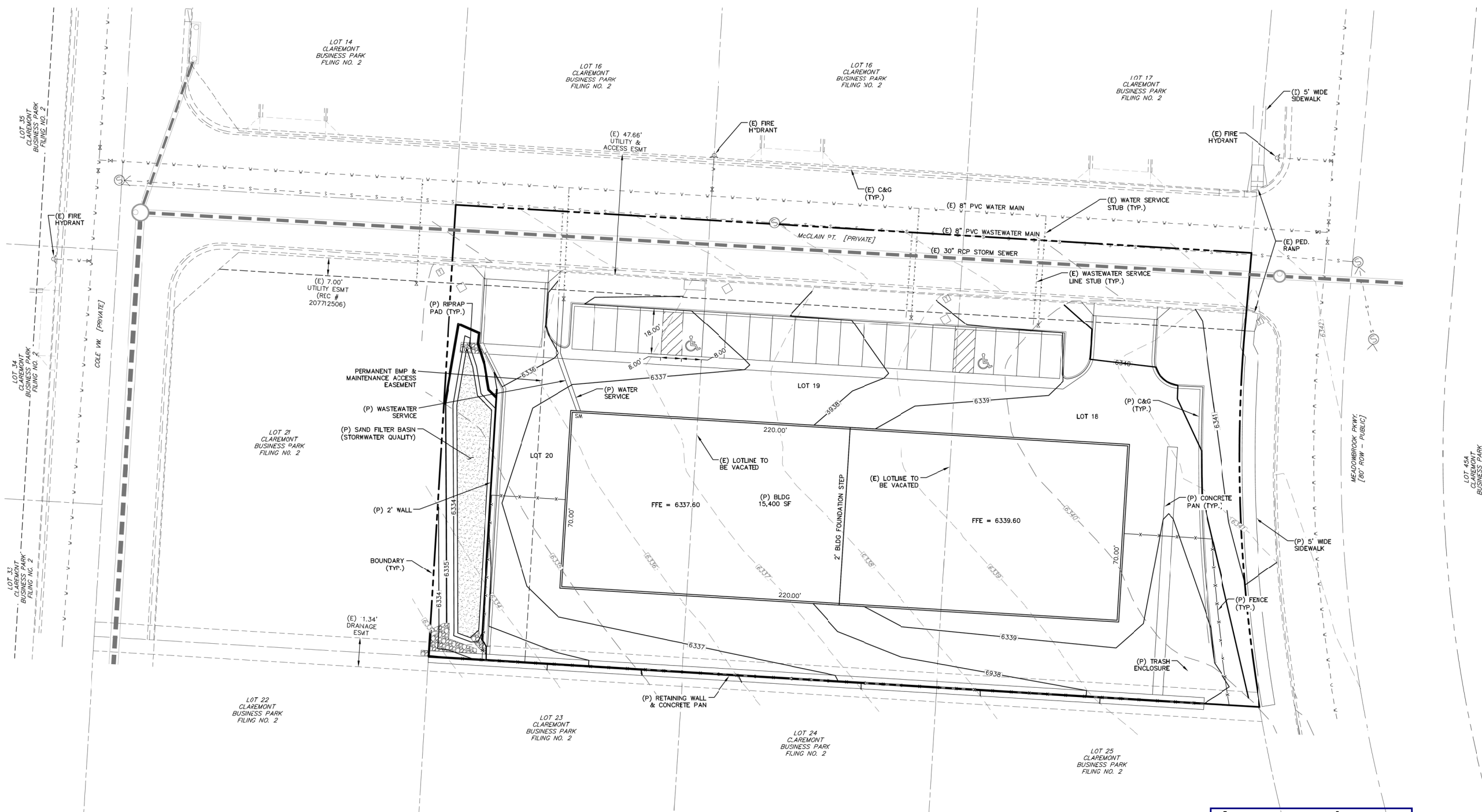


LOTS 18-20 CLAREMONT BUSINESS PARK FILING NO. 2

SITE DEVELOPMENT PLAN - GRADING & UTILITY PLAN



LEGEND	
EXISTING	(E)
PROPOSED	(P)
FUTURE	(F)
ADDRESS	(1234)
CURB AND GUTTER	C&G
BOUNDARY	---
ROW	---
LOT LINE	---
EASEMENT	---
(E) CONTOUR, INDEX	---
(E) CONTOUR	---
(E) SANITARY MAIN, MH	---
(E) WATER MAIN, BOV, VALVE, FH	---
(E) ELECTRIC	---
(E) GAS MAIN	---
(E) STORM SEWER, MH	---
(P) CONTOUR, INDEX	---
(P) CONTOUR	---
(P) SANITARY MAIN, MH	---
(P) SANITARY SEWER SERVICE	---
(P) UNDERDRAIN MAIN	---
(P) UNDERDRAIN SERVICE	---
(P) WATER MAIN BOV, VALVE, FH	---
(P) WATER SERVICE	---
(P) FIRE LINE	---
(P) STORM SEWER, MH	---
(P) STORM INLET	---

Approved
 By: **Nina Ruiz**
 Date: **10/16/2017**
 El Paso County Planning & Community Development

REV.	DESCRIPTION	DATE
1	ADDRESS AGENCY COMMENTS	01/30/17
2	ADDRESS AGENCY COMMENTS	03/02/17
3	ADDRESS AGENCY COMMENTS	03/25/17
1	ADDRESS AGENCY COMMENTS	04/07/17

PREPARED FOR:
WYKOTA CONSTRUCTION
 430 BEACON LITE ROAD, SUITE 130
 MONUMENT, CO 80132



LOTS 18-20 CLAREMONT
 BUSINESS PARK FILING NO. 2

SITE DEVELOPMENT PLAN
 GRADING & UTILITY PLAN

DRAWN BY:	CDK
DATE:	04/07/17
SCALE:	1" = 20'
JOB NUMBER	91616
SHEET	DP-C1

PPR-17-002