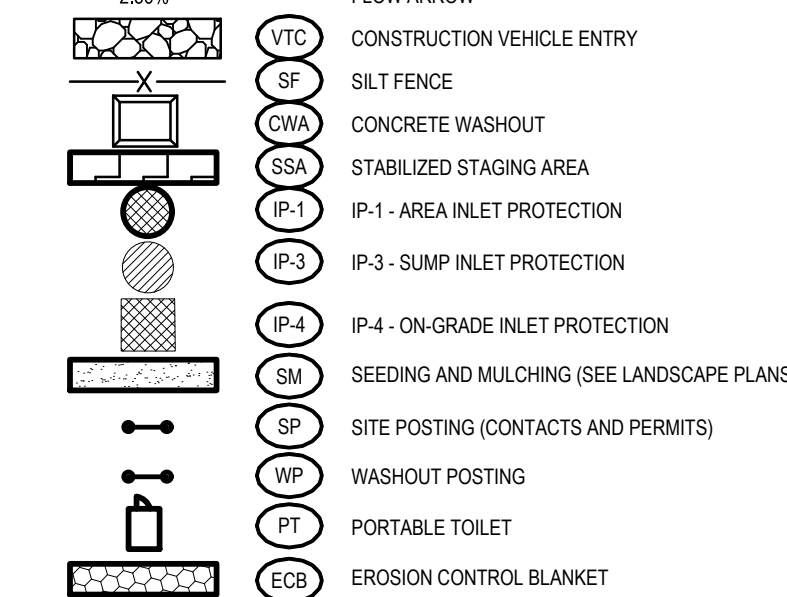
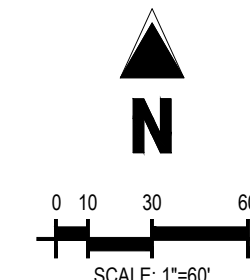
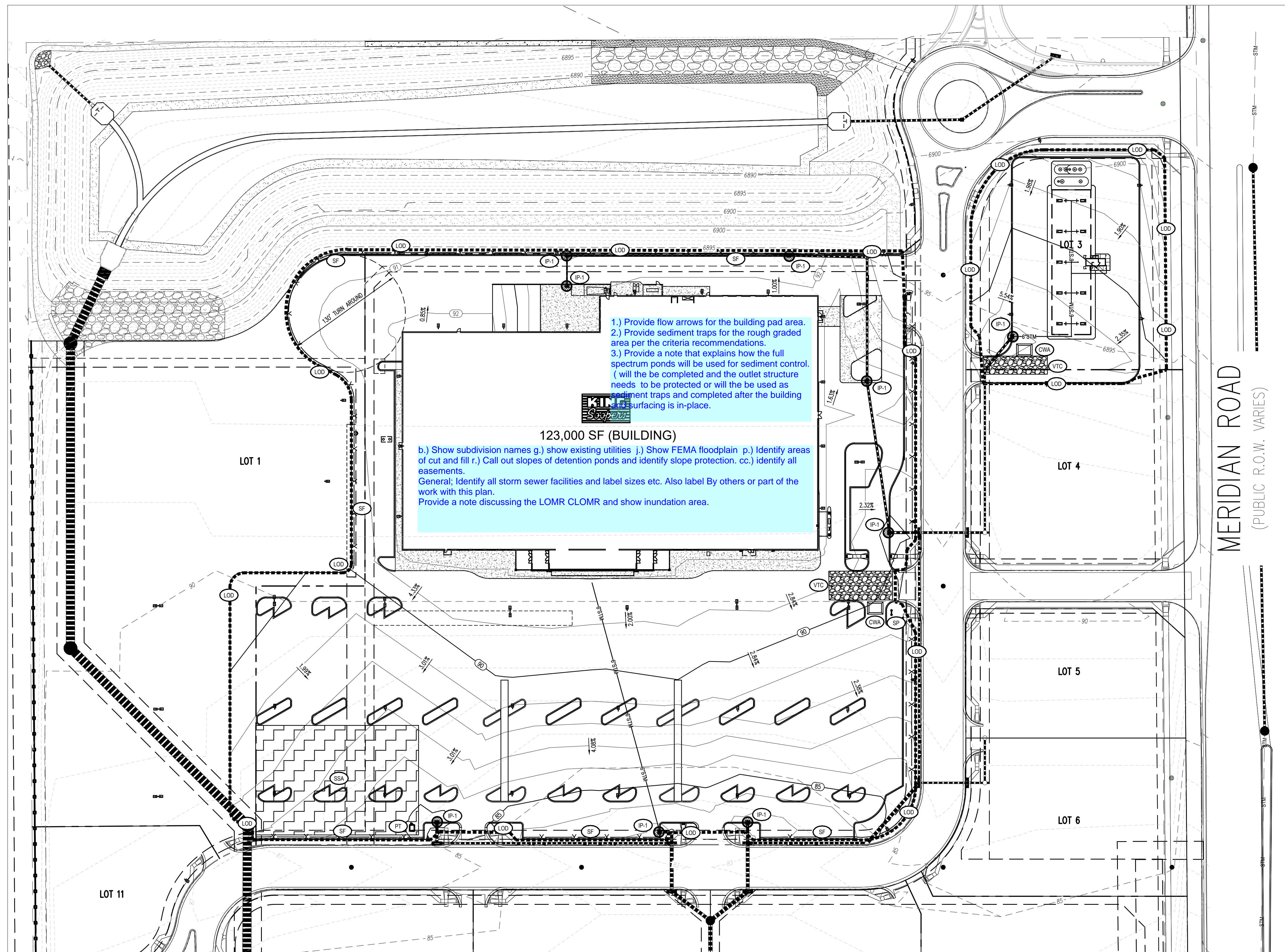


The map shows the project location in Woodmen Hills. A black arrow points to a shaded rectangular area labeled "SITE" at the intersection of E Woodmen Rd and McLaughlin Rd. The map includes major roads like Highway 24, and local streets such as Falcon Meadows Blvd, Rolling Thunder Way, and Judge Orr Rd. A north arrow is in the bottom right corner.

[illegible]

KING SOOPERS #147
ALCON MARKETPLACE LOTS 2 & 3, BLOCK
ION OF SECTION 1, TOWNSHIP 13 SOUTH, RANGE 6S
OF THE 6TH P.M., EL PASO COUNTY, COLORADO
GRADING AND EROSION CONTROL PLAN



GRADING SUMMARY TABLE	
TOTAL DISTURBED AREA	500,798 SQ. FT. (11.50 AC)
TOTAL IMPORT	474 CUBIC YD.

NOTE:

THE PLAN SHALL NOT SUBSTANTIALLY CHANGE THE DEPTH OF COVER, OR ACCESS TO UTILITY FACILITIES. ADDITIONALLY, THE PLAN SHALL NOT INCREASE OR DIVERT WATER TOWARDS UTILITY FACILITIES. ANY CHANGES TO UTILITY FACILITIES TO ACCOMMODATE THE PLAN, MUST BE DISCUSSED AND AGREED TO BY THE AFFECTED UTILITY PRIOR TO IMPLEMENTING THE PLAN. THE RESULTING COST TO RELOCATE OR PROTECT UTILITIES, OR PROVIDE INTERIM ACCESS IS AT THE EXPENSE OF THE PLAN APPLICANT.

- Ensure notes are per the checklist, website provided on the cover sheet.

EL PASO COUNTY GRADING AND EROSION CONTROL NOTES:

2. SEE OVERALL CD EROSION CONTROL DETAIL, SHEET.
3. STORMWATER DISCHARGES FROM CONSTRUCTION SITES SHALL NOT CAUSE OR THREATEN TO CAUSE POLLUTION, CONTAMINATION, OR DEGRADATION OF STATE WATERS. ALL WORK AND EARTH DISTURBANCE SHALL BE CONDUCTED IN A MANNER THAT MINIMIZES POLLUTION OF ANY ON-SITE OR OFF SITE WATERS, INCLUDING WETLANDS.
4. NOTWITHSTANDING ANYTHING DEPICTED IN THESE PLANS IN WORDS OR GRAPHIC REPRESENTATION, ALL DESIGN AND CONSTRUCTION RELATED TO ROADS, STORM DRAINAGE AND EROSION CONTROL SHALL COMPLY WITH THE LATEST EDITIONS OF THE STANDARDS AND SPECIFICATIONS OF THE EROSION CONTROL REGULATORY ADOPTED BY EL PASO COUNTY STANDARDS, INCLUDING THE LAND DEVELOPMENT CODE, THE ENGINEERING CRITERIA MANUAL, THE DRAINAGE CRITERIA MANUAL, AND THE DRAINAGE CRITERIA MANUAL, VOLUME 2. THE CONTRACTOR SHALL BE RESPONSIBLE FOR OBTAINING THE LATEST EDITIONS OF THE STANDARDS. IN WRITING, A SEPARATE STORMWATER MANAGEMENT PLAN (SWMP) FOR THIS PROJECT SHALL BE COMPLETED AND AN EROSION AND STORMWATER QUALITY CONTROL PERMIT (ESQCP) ISSUED PRIOR TO COMMENCING CONSTRUCTION. DURING CONSTRUCTION THE SWMP IS THE SUPERSEDING DOCUMENT FOR THE DESIGNATED EROSION AND STORMWATER MANAGER, SHALL BE MAINTAINED ON-SITE, AND SHALL BE KEPT UP TO DATE WITH WORK PROGRESS AND CHANGES IN THE FIELD.
5. ONCE THE ESQCP HAS BEEN ISSUED, THE CONTRACTOR MAY INSTALL THE INITIAL STAGE EROSION AND STORMWATER CONTROL, SUCH AS EROSION CONTROL MATS, EROSION CONTROL BUNDLES, OR EROSION CONTROL STRUCTURES. THE CONTRACTOR, ENGINEER, AND EL PASO COUNTY WILL BE HELD PRIOR TO ANY CONSTRUCTION. IT IS THE RESPONSIBILITY OF THE APPLICANT TO COORDINATE THE MEETING TIME AND PLACE WITH COUNTY DSD INSPECTIONS STAFF.
6. SOIL EROSION CONTROL MEASURES FOR ALL SLOPES, CHANNELS, DITCHES, OR ANY DISTURBED LAND AREA SHALL BE COMPLETED WITHIN 21 CALENDAR DAYS AFTER FINAL GRADING, OR FINAL EARTH DISTURBANCE, HAS BEEN COMPLETED. DISTURBED AREAS AND STOCKPILES WHICH ARE NOT AT FINAL GRADE SHALL REMAIN COVERED WITH EROSION CONTROL MEASURES UNTIL THE EROSION CONTROL MEASURES ARE IN PLACE AFTER INTERIM GRADING. AN AREA THAT IS GOING TO REMAIN IN AN INTERIM STATE FOR MORE THAN 60 DAYS SHALL ALSO BE SEEDDED. ALL TEMPORARY SOIL EROSION CONTROL MEASURES AND BMPs SHALL BE MAINTAINED UNTIL PERMANENT SOIL EROSION CONTROL MEASURES ARE IMPLEMENTED AND ESTABLISHED.
7. TEMPORARY SOIL EROSION CONTROL FACILITIES SHALL BE REMOVED AND EARTH DISTURBANCE AREAS GRADED AND STABILIZED WITH PERMANENT SOIL EROSION CONTROL MEASURES PURSUANT TO STANDARDS AND SPECIFICATION PRESCRIBED IN THE DCM VOLUME II AND THE ENGINEERING CRITERIA MANUAL, APPENDIX I.
8. ALL PERSONS ENGAGED IN EARTH DISTURBANCE SHALL IMPLEMENT AND MAINTAIN ACCEPTABLE SOIL EROSION AND SEDIMENT CONTROL MEASURES INCLUDING BMPs IN CONFORMANCE WITH THE EROSION CONTROL CRITERIA MANUAL, VOLUMES I AND II, AND THE DRAINAGE CRITERIA MANUAL, DCM VOLUME I AND II, IN ACCORDANCE WITH THE STORMWATER MANAGEMENT PLAN (SWMP).
9. ALL TEMPORARY EROSION CONTROL FACILITIES INCLUDING BMPs AND ALL PERMANENT FACILITIES INSTALLED TO CONTROL EROSION OF ANY EARTH DISTURBANCE OPERATIONS, SHALL BE MAINTAINED AS SPECIFIED IN THE APPROVED PLANS. THE CONTRACTOR SHALL BE RESPONSIBLE FOR THE INSTALLATION DURING THE DURATION OF THE EARTH DISTURBANCE OPERATION.
10. ANY EARTH DISTURBANCE SHALL BE CONDUCTED IN SUCH A MANNER AS TO AS EFFECTIVELY REDUCE THE EROSION AND SOIL EROSION. EROSION CONTROL MEASURES SHALL BE MAINTAINED THROUGHOUT CONSTRUCTION, AND COMPLETED SO THAT THE EXPOSED AREA OF ANY DISTURBED LAND SHALL BE LIMITED TO THE SHORTEST PRACTICAL PERIOD OF TIME.
11. ANY TEMPORARY OR PERMANENT FACILITY DESIGNED AND CONSTRUCTED FOR THE CONVEYANCE OF STORMWATER AROUNDING THROUGH THE EARTH DISTURBANCE AREA SHALL BE DESIGNED TO LIMIT THE DISCHARGE TO A NON-EROSIVE VELOCITY.
12. CONCRETE WASH WATER SHALL BE CONTAINED AND DISPOSED OF IN ACCORDANCE WITH THE SWMP. NO DISCHARGE OF WASH WATER SHALL BE DISCHARGED TO ANY OF THE SURFACE STATE WATERS, INCLUDING ANY SURFACE OR SUBSURFACE STORM DRAINAGE SYSTEM OR FACILITIES.
13. EROSION CONTROL BLANKETING IS TO BE USED ON SLOPES STEEPER THAN 3:1.
14. BUILDING, CONSTRUCTION, EXCAVATION, OR OTHER WASTE MATERIALS SHALL NOT BE DEPOSITED IN OR STORED IN STREET OR ALLEYWAYS. WASTE MATERIALS SHALL BE INSTALLED WITH AN APPROVED FACTORY CONTROL PLAN. BMPs MAY BE REQUIRED BY EL PASO COUNTY ENGINEERING IF DETERMINED NECESSARY BASED ON SPECIFIC CONDITIONS AND CIRCUMSTANCES.
15. THE WASHING OF SOILS AND CONSTRUCTION DEBRIS SHALL BE MINIMIZED. MATERIALS VENDED OFFSITE SHALL BE CLEANED AND PROPERLY DISPOSED OF IMMEDIATELY.
16. CONTRACTOR SHALL BE RESPONSIBLE FOR THE REMOVAL OF ALL WASTES FROM THE CONSTRUCTION SITE FOR DISPOSAL IN ACCORDANCE WITH LOCAL AND STATE REGULATORY REQUIREMENTS. NO CONSTRUCTION DEBRIS OR FREE LANDING WASTE OR UNUSED BUILDING MATERIALS SHALL BE BURIED, DUMPED, OR DISCHARGED AT THE SITE.
17. THE OWNER, SITE DEVELOPER, CONTRACTOR, AND THEIR AUTHORIZED AGENTS SHALL BE RESPONSIBLE FOR THE REMOVAL OF ALL CONSTRUCTION DEBRIS, DIRT, TRASH, ROCK, SEDIMENT, AND MATERIALS THAT MAY ACCUMULATE IN THE EROSION CONTROL FACILITIES CONVEYANCE SYSTEM AND STORMWATER APPURTENANCES AS A RESULT OF SITE DEVELOPMENT.
18. THE QUANTITY OF MATERIALS STORED ON THE PROJECT SITE SHALL BE LIMITED, AS MUCH AS PRACTICAL, TO THE QUANTITY REQUIRED TO COMPLETE THE PROJECT. EXCESS MATERIALS SHALL BE STORED OFF-SITE. STORED ON-SITE SHALL BE STORED IN A NEAT, ORDERLY MANNER, IN THEIR ORIGINAL CONTAINERS, WITH ORIGINAL MANUFACTURER'S LABELS.
19. NO CHEMICALS ARE TO BE USED BY THE CONTRACTOR, WHICH HAVE THE POTENTIAL TO BE RELEASED TO THE ENVIRONMENT, UNLESS PERMISSION FOR THE USE OF A SPECIFIC CHEMICAL IS GRANTED IN WRITING BY THE ECOM ADMINISTRATOR. IN GRANTING THE USE OF SUCH CHEMICALS, SPECIFIC CONDITIONS AND MONITORING MAY BE REQUIRED.
20. BULK STORAGE STRUCTURES FOR PETROLEUM PRODUCTS AND OTHER CHEMICALS SHALL HAVE ADEQUATE PROTECTION SO AS TO CONTAIN ALL SPILLS AND PREVENT ANY SPILLED MATERIAL FROM ENTERING STATE WATERS, INCLUDING ANY SURFACE OR SUBSURFACE STORM DRAINAGE SYSTEM OR FACILITIES.
21. NO PERSON SHALL CAUSE THE IMPEDIMENT OF STORMWATER FLOW IN THE FLOW LINE OF THE CURB AND GUTTER OR IN THE DITCHLINE.
22. INDIVIDUALS SHALL COMPLY WITH THE "COLORADO WATER QUALITY CONTROL ACT" (TITLE 25, ARTICLE 6, SECTION 2) AND "CLEAN WATER ACT" (33 USC 1362). THE CONTRACTOR SHALL BE RESPONSIBLE FOR THE DCM VOLUME II AND THE ECOM APPENDIX I. ALL APPROPRIATE PERMITS MUST BE OBTAINED BY THE CONTRACTOR PRIOR TO CONSTRUCTION (NPDES, FLOODPLAIN, 404, FUGITIVE DUST, ETC.). IN THE EVENT OF CONFLICTS BETWEEN THESE REQUIREMENTS AND LAWS, RULES, OR REGULATIONS OF OTHER FEDERAL, STATE, OR COUNTY AGENCIES, THE MORE RESTRICTIVE LAWS, RULES, OR REGULATIONS SHALL APPLY.
23. ALL CONSTRUCTION TRAFFIC MUST ENTER/EXIT THE SITE AT APPROVED CONSTRUCTION ACCESS POINTS. THE TEMPORAL CONSTRUCTION TRAFFIC SHALL BE LIMITED TO THE APPROVED ACCESS POINTS. A WATER SOURCE SHALL BE AVAILABLE ON SITE DURING EARTHWORK OPERATIONS AND UTILIZED AS REQUIRED TO MINIMIZE DUST-LOOSE EARTHWORK EQUIPMENT AND WIND.
24. THE SOILS REPORT FOR THIS SITE HAS BEEN PREPARED BY SCUDING AND SHALL BE CONSIDERED A PART OF THESE PLANS.
25. AT LEAST TEN DAYS PRIOR TO THE ANTICIPATED START OF CONSTRUCTION, FOR PROJECTS THAT WILL

RUNOFF COEFFICIENT TABLE				
	EXISTING COEFFICIENTS		PROPOSED COEFFICIENTS	
	5-YEAR	100-YEAR	5-YEAR	100-YEAR
COMPOSITE COEFFICIENT	0.75	0.84	0.75	0.84

6162 S. Willow Drive, Suite 320
Greenwood Village, CO 80111
303.770.8884
GallowayUS.com

COPYRIGHT
THESE PLANS ARE AN INSTRUMENT OF SERVICE AND ARE THE PROPERTY OF GALLOWAY, AND MAY NOT BE DUPLICATED, DISCLOSED, OR REPRODUCED WITHOUT THE WRITTEN CONSENT OF GALLOWAY. COPYRIGHTS AND INFRINGEMENTS WILL BE ENFORCED AND PROSECUTED.

KING Scopers

King Soopers
Supermarket / Petroleum
65 Tejon Street
Denver, CO 80223
Phone (303) 778-3053
Fax (303) 871-9262

KING SOOPERS #147
FALCON MARKETPLACE
LOTS 2 & 3, BLOCK 1

E. WOODMEN ROAD & MERIDIAN ROAD
FALCON, CO

[illegible]

Project No:	KSS000147
Drawn By:	ACJ
Checked By:	JRR
Date:	8/29/19

GRADING AND EROSION CONTROL PLAN

C2.1

GRADING AND EROSION CONTROL PLAN

GEC V_1 redlines.pdf Markup Summary

[1] 1 COVER SHEET (7)



Subject: text box
Page Label: [1] 1 COVER SHEET
Author: Steve Kuehster
Date: 11/5/2019 11:48:49 AM
Status:
Color: ■
Layer:
Space:

Provide with the next submittal. Instructions are provided below the list of attachments. Checklists can be found at:
https://planningdevelopment.elpasoco.com/wp-content/uploads/Engineering/EngineeringDocuments/Copy-of-GEC-SWMP_Checklists.xlsx

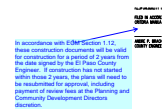
Engineering Review
11/05/2019 11:49:14 AM
dskuehster@elpasoco.com
(719) 583-6413
EPC Planning & Community
Development Department

Subject: EPC ENG Review
Page Label: [1] 1 COVER SHEET
Author: Steve Kuehster
Date: 11/5/2019 11:49:14 AM
Status:
Color: ■
Layer:
Space:

CRITERIA MANUAL, VOLUMES 1

ANDRE P. BRACKIN, P.E.,
COUNTY ENGINEER / ECM ADM

Subject: Pen
Page Label: [1] 1 COVER SHEET
Author: Steve Kuehster
Date: 11/5/2019 11:52:00 AM
Status:
Color: ■
Layer:
Space:



Subject: arrow & box
Page Label: [1] 1 COVER SHEET
Author: Steve Kuehster
Date: 11/5/2019 11:56:42 AM
Status:
Color: ■
Layer:
Space:

In accordance with ECM Section 1.12, these construction documents will be valid for construction for a period of 2 years from the date signed by the El Paso County Engineer. If construction has not started within those 2 years, the plans will need to be resubmitted for approval, including payment of review fees at the Planning and Community Development Directors discretion.

ADMINISTRATOR

Jennifer Irvine, P.E

Subject: text box
Page Label: [1] 1 COVER SHEET
Author: Steve Kuehster
Date: 11/5/2019 11:57:05 AM
Status:
Color: ■
Layer:
Space:

Jennifer Irvine, P.E

ADMINISTRATOR

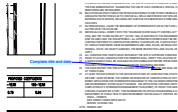
Subject: text box
Page Label: [1] 1 COVER SHEET
Author: Steve Kuehster
Date: 11/5/2019 11:57:16 AM
Status:
Color: ■
Layer:
Space:

Further comments will be provided with a complete submittal including the checklist, etc.

Subject: text box
Page Label: [1] 1 COVER SHEET
Author: Steve Kuehster
Date: 11/5/2019 12:37:19 PM
Status:
Color: ■
Layer:
Space:

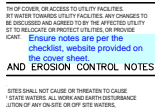
Further comments will be provided with a complete submittal including the checklist, etc.

[3] 3 GRADING AND EROSION CONTROL DETAILS (4)



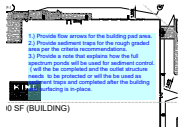
Subject: arrow & box
Page Label: [3] 3 GRADING AND EROSION CONTROL DETAILS
Author: Steve Kuehster
Date: 11/4/2019 1:03:03 PM
Status:
Color: ■
Layer:
Space:

Complete title and date



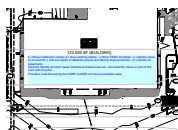
Subject: text box
Page Label: [3] 3 GRADING AND EROSION CONTROL DETAILS
Author: Steve Kuehster
Date: 11/5/2019 12:00:18 PM
Status:
Color: ■
Layer:
Space:

Ensure notes are per the checklist, website provided on the cover sheet.



Subject: text box
Page Label: [3] 3 GRADING AND EROSION CONTROL DETAILS
Author: Steve Kuehster
Date: 11/5/2019 12:16:40 PM
Status:
Color: ■
Layer:
Space:

1.) Provide flow arrows for the building pad area.
2.) Provide sediment traps for the rough graded area per the criteria recommendations.
3.) Provide a note that explains how the full spectrum ponds will be used for sediment control. (will the be completed and the outlet structure needs to be protected or will the be used as sediment traps and completed after the building and surfacing is in-place.



Subject: text box
Page Label: [3] 3 GRADING AND EROSION CONTROL DETAILS
Author: Steve Kuehster
Date: 11/5/2019 12:34:30 PM
Status:
Color: ■
Layer:
Space:

b.) Show subdivision names g.) show existing utilities j.) Show FEMA floodplain p.) Identify areas of cut and fill r.) Call out slopes of detention ponds and identify slope protection. cc.) identify all easements.

General; Identify all storm sewer facilities and label sizes etc. Also label By others or part of the work with this plan.

Provide a note discussing the LOMR CLOMR and show inundation area.