

The map shows the area around Meadow Lake Airport. A hatched rectangle labeled 'SITE' is located on E Woodmen Rd, north of the airport. Major roads include Highway 24, Woodmen Hills Dr, and various local streets like Falcon Meadows Blvd, Rolling Thunder Way, and Birch Hollow Way. A north arrow is in the bottom right corner.

6 Western Blvd

UNIT 2

UNIT 1

10

6 Western Blvd

UNIT 1

UNIT 2

UNIT 3

UNIT 4

UNIT 5

UNIT 6

UNIT 7

UNIT 8

UNIT 9

UNIT 10

UNIT 11

UNIT 12

UNIT 13

UNIT 14

UNIT 15

UNIT 16

UNIT 17

UNIT 18

UNIT 19

UNIT 20

UNIT 21

UNIT 22

UNIT 23

UNIT 24

UNIT 25

UNIT 26

UNIT 27

UNIT 28

UNIT 29

UNIT 30

UNIT 31

UNIT 32

UNIT 33

UNIT 34

UNIT 35

UNIT 36

UNIT 37

UNIT 38

UNIT 39

UNIT 40

UNIT 41

UNIT 42

UNIT 43

UNIT 44

UNIT 45

UNIT 46

UNIT 47

UNIT 48

UNIT 49

UNIT 50

UNIT 51

UNIT 52

UNIT 53

UNIT 54

UNIT 55

UNIT 56

UNIT 57

UNIT 58

UNIT 59

UNIT 60

UNIT 61

UNIT 62

UNIT 63

UNIT 64

UNIT 65

UNIT 66

UNIT 67

UNIT 68

UNIT 69

UNIT 70

UNIT 71

UNIT 72

UNIT 73

UNIT 74

UNIT 75

UNIT 76

UNIT 77

UNIT 78

UNIT 79

UNIT 80

UNIT 81

UNIT 82

UNIT 83

UNIT 84

UNIT 85

UNIT 86

UNIT 87

UNIT 88

UNIT 89

UNIT 90

UNIT 91

UNIT 92

UNIT 93

UNIT 94

UNIT 95

UNIT 96

UNIT 97

UNIT 98

UNIT 99

UNIT 100

UNIT 101

UNIT 102

UNIT 103

UNIT 104

UNIT 105

UNIT 106

UNIT 107

UNIT 108

UNIT 109

UNIT 110

UNIT 111

UNIT 112

UNIT 113

UNIT 114

UNIT 115

UNIT 116

UNIT 117

UNIT 118

UNIT 119

UNIT 120

UNIT 121

UNIT 122

UNIT 123

UNIT 124

UNIT 125

UNIT 126

UNIT 127

UNIT 128

UNIT 129

UNIT 130

UNIT 131

UNIT 132

UNIT 133

UNIT 134

UNIT 135

UNIT 136

UNIT 137

UNIT 138

UNIT 139

UNIT 140

UNIT 141

UNIT 142

UNIT 143

UNIT 144

UNIT 145

UNIT 146

UNIT 147

UNIT 148

UNIT 149

UNIT 150

UNIT 151

UNIT 152

UNIT 153

UNIT 154

UNIT 155

UNIT 156

UNIT 157

UNIT 158

UNIT 159

UNIT 160

UNIT 161

UNIT 162

UNIT 163

UNIT 164

UNIT 165

UNIT 166

UNIT 167

UNIT 168

UNIT 169

UNIT 170

UNIT 171

UNIT 172

UNIT 173

UNIT 174

UNIT 175

UNIT 176

UNIT 177

UNIT 178

UNIT 179

UNIT 180

UNIT 181

UNIT 182

UNIT 183

UNIT 184

UNIT 185

UNIT 186

UNIT 187

UNIT 188

UNIT 189

UNIT 190

UNIT 191

UNIT 192

UNIT 193

UNIT 194

UNIT 195

UNIT 196

UNIT 197

UNIT 198

UNIT 199

UNIT 200

UNIT 201

UNIT 202

UNIT 203

UNIT 204

UNIT 205

UNIT 206

UNIT 207

UNIT 208

UNIT 209

UNIT 210

UNIT 211

UNIT 212

UNIT 213

UNIT 214

UNIT 215

UNIT 216

UNIT 217

UNIT 218

UNIT 219

UNIT 220

UNIT 221

UNIT 222

UNIT 223

UNIT 224

UNIT 225

UNIT 226

UNIT 227

UNIT 228

UNIT 229

UNIT 230

UNIT 231

UNIT 232

UNIT 233

UNIT 234

UNIT 235

UNIT 236

UNIT 237

UNIT 238

UNIT 239

UNIT 240

UNIT 241

UNIT 242

UNIT 243

UNIT 244

UNIT 245

UNIT 246

UNIT 247

UNIT 248

UNIT 249

UNIT 250

UNIT 251

UNIT 252

UNIT 253

UNIT 254

UNIT 255

UNIT 256

UNIT 257

UNIT 258

UNIT 259

UNIT 260

UNIT 261

UNIT 262

UNIT 263

UNIT 264

UNIT 265

UNIT 266

UNIT 267

UNIT 268

UNIT 269

UNIT 270

UNIT 271

UNIT 272

UNIT 273

UNIT 274

UNIT 275

UNIT 276

UNIT 277

UNIT 278

UNIT 279

UNIT 280

UNIT 281

UNIT 282

UNIT 283

UNIT 284

UNIT 285

UNIT 286

UNIT 287

UNIT 288

UNIT 289

UNIT 290

UNIT 291

UNIT 292

UNIT 293

UNIT 294

UNIT 295

UNIT 296

UNIT 297

UNIT 298

UNIT 299

UNIT 300

UNIT 301

UNIT 302

UNIT 303

UNIT 304

UNIT 305

UNIT 306

UNIT 307

UNIT 308

UNIT 309

UNIT 310

UNIT 311

UNIT 312

UNIT 313

UNIT 314

UNIT 315

UNIT 316

UNIT 317

UNIT 318

UNIT 319

UNIT 320

UNIT 321

UNIT 322

UNIT 323

UNIT 324

UNIT 325

UNIT 326

UNIT 327

UNIT 328

UNIT 329

UNIT 330

UNIT 331

UNIT 332

UNIT 333

UNIT 334

UNIT 335

UNIT 336

UNIT 337

UNIT 338

UNIT 339

UNIT 340

UNIT 341

UNIT 342

UNIT 343

UNIT 344

UNIT 345

UNIT 346

UNIT 347

UNIT 348

UNIT 349

UNIT 350

UNIT 351

UNIT 352

UNIT 353

UNIT 354

UNIT 355

UNIT 356

UNIT 357

UNIT 358

UNIT 359

UNIT 360

UNIT 361

UNIT 362

UNIT 363

UNIT 364

UNIT 365

UNIT 366

UNIT 367

UNIT 368

UNIT 369

UNIT 37







# GRADING AND EROSION CONTROL PLAN

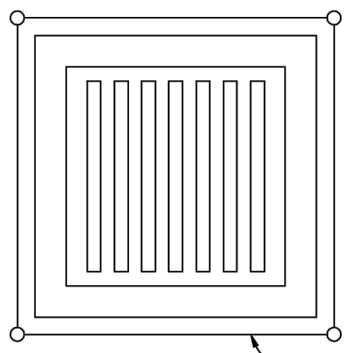


## C2.2

Wing Scoopers - City Market/CO, Falcon - K35000147 Woodman & Merdian/DADO2-251m/KS147\_COX-B-4/CP/FINAL.dwg - Aaron Johnston - 12/11/20



KING SOOPERS #147  
FALCON MARKETPLACE LOTS 2 & 3, BLOCK 1  
A PORTION OF SECTION 1, TOWNSHIP 13 SOUTH, RANGE 65 WEST  
OF THE 6TH P.M., EL PASO COUNTY, COLORADO  
GRADING AND EROSION CONTROL PLAN



Filter Fabric Inlet Protection  
NTS

Filter Fabric Inlet Protection Notes

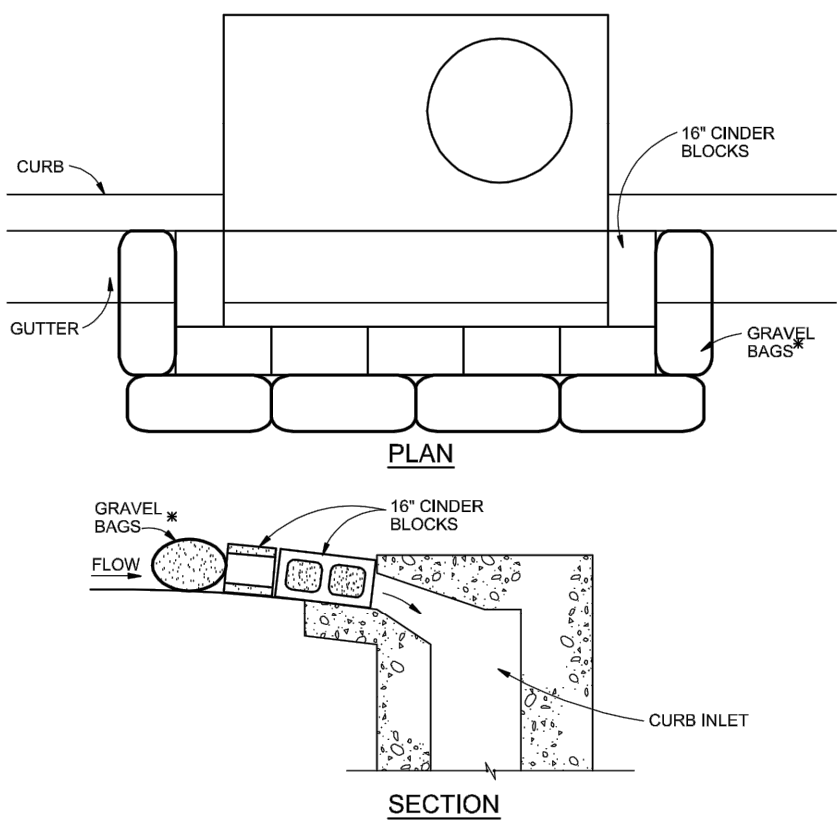
- INSTALLATION REQUIREMENTS**
1. INLET PROTECTION SHALL BE INSTALLED IMMEDIATELY AFTER CONSTRUCTION OF INLET.
  2. SEE SILT FENCE FIGURE SF-2 FOR INSTALLATION REQUIREMENTS.
  3. POSTS ARE TO BE PLACED AT EACH CORNER OF THE INLET AND AROUND THE EDGES AT A MAXIMUM SPACING OF 3 FEET.

- MAINTENANCE REQUIREMENTS**
1. CONTRACTOR SHALL INSPECT INLET PROTECTION IMMEDIATELY AFTER EACH RAINFALL, AT LEAST DURING PROLONGED RAINFALL, AND WEEKLY DURING PERIODS NO RAINFALL.
  2. DAMAGED, COLLAPSED, UNENTRENCHED OR INEFFECTIVE INLET PROTECTION SHALL BE PROMPTLY REPAIRED OR REPLACED.
  3. SEDIMENT SHALL BE REMOVED FROM BEHIND FILTER FABRIC WHEN IT ACCUMULATES TO HALF THE EXPOSED GEOTEXTILE HEIGHT.
  4. FILTER FABRIC PROTECTION SHALL BE REMOVED WHEN ADEQUATE VEGETATIVE COVER IS ATTAINED IN THE DRAINAGE AREA AS APPROVED BY THE CITY.

City of Colorado Springs  
Stormwater Quality

Figure IP-1  
Filter Fabric Inlet Protection  
Construction Detail and Maintenance  
Requirements

3-25



Block and Gravel Bag Curb Inlet Protection  
NTS

Block and Gravel Bag Curb Inlet Protection Notes

INSTALLATION REQUIREMENTS

1. INLET PROTECTION SHALL BE INSTALLED IMMEDIATELY AFTER CONSTRUCTION OF INLET.
2. CONCRETE BLOCKS ARE TO BE LAID AROUND THE INLET IN A SINGLE ROW ON THEIR SIDES ABUTTING ONE ANOTHER WITH THE OPEN ENDS OF THE BLOCK FACING OUTWARD.
3. GRAVEL BAGS ARE TO BE PLACED AROUND THE CONCRETE BLOCKS CLOSELY ABUTTING ONE ANOTHER SO THERE ARE NO GAPS.
4. GRAVEL BAGS ARE TO CONTAIN WASHED SAND OR GRAVEL APPROXIMATELY 3/4 INCH IN DIAMETER.
5. BAGS ARE TO BE MADE OF 1/4" INCH WIRE MESH (USED WITH GRAVEL ONLY OR GEOTEXTILE).

MAINTENANCE REQUIREMENTS

1. CONTRACTOR SHALL INSPECT INLET PROTECTION IMMEDIATELY AFTER EACH RAINFALL, AT LEAST DURING PROLONGED RAINFALL, AND WEEKLY DURING PERIODS NO RAINFALL.
2. DAMAGED OR INEFFECTIVE INLET PROTECTION SHALL PROMPTLY BE REPAIRED OR REPLACED.
3. SEDIMENT SHALL BE REMOVED WHEN SEDIMENT HAS ACCUMULATED TO APPROXIMATELY 1/2 THE DESIGN DEPTH OF THE TRAP.
4. INLET PROTECTION SHALL BE REMOVED WHEN ADEQUATE VEGETATIVE COVER IS ATTAINED WITHIN THE DRAINAGE AREA AS APPROVED BY THE CITY.

- AN ALTERNATE 3/4" TO 1" GRAVEL FILTER OVER A WIRE SCREEN MAY BE USED IN PLACE OF GRAVEL BAGS. THE WIRE MESH SHALL EXTEND ABOVE THE TOP OF THE CONCRETE BLOCKS AND THE GRAVEL PLACED OVER THE WIRE SCREEN TO THE TOP OF THE CONCRETE BLOCKS.

City of Colorado Springs  
Stormwater Quality

Figure IP-3  
Block & Gravel Bag Curb Inlet Protection  
Construction Detail and Maintenance  
Requirements

3-27

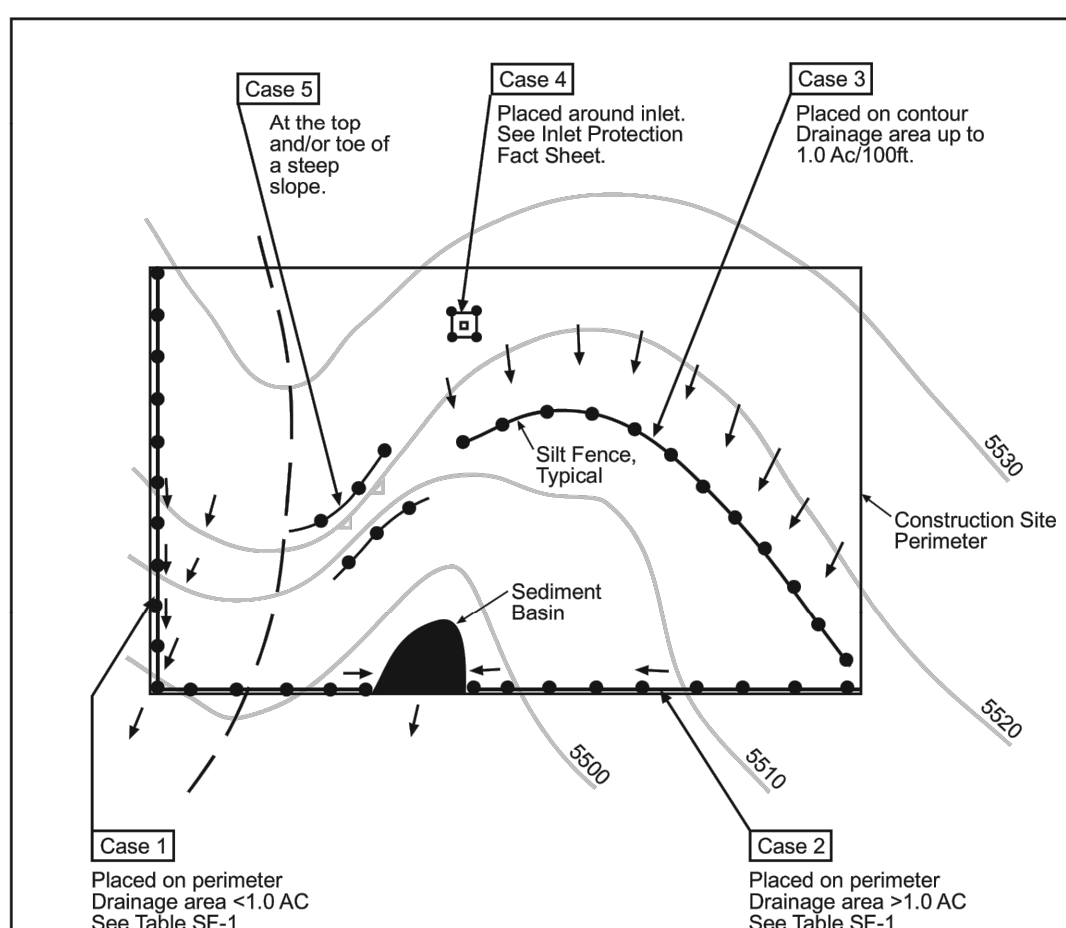


Table SF-1

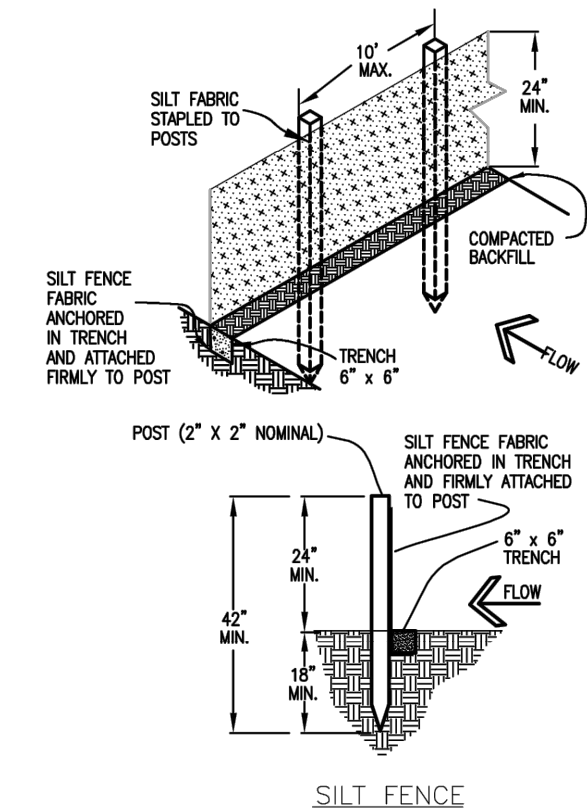
Silt Fence Used as	Case 1		Case 2
	DA < 0.25 AC	0.25 < DA < 1 AC	DA > 1.0 AC
Continuous Grade	OK <sup>(1)</sup>	OK <sup>(1)</sup>	OK <sup>(1)</sup>
Area of Concentrated Flow	OK	NO <sup>(2)</sup>	NO <sup>(3)</sup>

- (1) Temporary Swale or Straw Bale Barrier may be used as alternative to a Silt Fence.  
(2) Check Dam may also be used as alternative to Silt Fence at low point.  
(3) Sediment Basin is required for concentrated flow from drainage areas > 1.0 AC.

City of Colorado Springs  
Storm Water Quality

Figure SF-1  
Silt Fence  
Application Examples

3-35



SILT FENCE

SILT FENCE NOTES

INSTALLATION REQUIREMENTS

1. SILT FENCES SHALL BE INSTALLED PRIOR TO ANY LAND DISTURBING ACTIVITIES.
2. WHEN JOINTS ARE NECESSARY, SILT FENCE GEOTEXTILE SHALL BE SPUN TOGETHER ONLY AT SUPPORT POST AND SECURELY SEALED.
3. METAL POSTS SHALL BE "STUDDED TEE" OR "J" TYPE WITH MINIMUM WEIGHT OF 133 POUNDS PER LINEAL FOOT. WOOD POSTS SHALL HAVE A MINIMUM DIAMETER OR CROSS SECTION DIMENSION OF 2 INCHES.
4. THE FILTER MATERIAL SHALL BE FASTENED SECURELY TO METAL OR WOOD POSTS USING WIRE TIES OR TO WOOD POSTS WITH 3/4" LONG #9 HEAVY-DUTY STAPLES. THE SILT FENCE GEOTEXTILE SHALL NOT BE STAPLED TO EXISTING TREES.
5. WHILE NOT REQUIRED, WIRE MESH FENCE MAY BE USED TO SUPPORT THE GEOTEXTILE. WIRE FENCE SHALL BE FASTENED SECURELY TO THE UPSLOPE SIDE OF THE POSTS USING HEAVY-DUTY WIRE STAPLES AT LEAST 3/4" LONG. TIE WIRE OR HOE RINGS. THE WIRE SHALL EXTEND INTO THE TRENCH A MINIMUM OF 6" AND SHALL NOT EXTEND MORE THAN 3' ABOVE THE ORIGINAL GROUND SURFACE.

6. ALONG THE TOE OF FILLS, INSTALL THE SILT FENCE ALONG A LEVEL CONTOUR AND PROVIDE AN AREA BEHIND THE FENCE FOR RUNOFF TO POND AND SEDIMENT TO SETTLE. A MINIMUM DISTANCE OF 3 FEET FROM THE TOE OF THE FILL IS RECOMMENDED.
7. THE HEIGHT OF THE SILT FENCE FROM THE GROUND SURFACE SHALL BE MINIMUM OF 24 INCHES AND SHALL NOT EXCEED 36 INCHES. HIGHER FENCES MAY IMPOUND VOLUMES OF WATER SUFFICIENT TO CAUSE FAILURE OF THE STRUCTURE.

- MAINTENANCE REQUIREMENTS**
1. CONTRACTOR SHALL INSPECT SILT FENCES IMMEDIATELY AFTER EACH RAINFALL, AT LEAST DURING PROLONGED RAINFALL, AND WEEKLY DURING PERIODS OF NO RAINFALL. DAMAGED, COLLAPSED, UNENTRENCHED OR INEFFECTIVE SILT FENCES SHALL BE PROMPTLY REPAIRED OR REPLACED.
  2. SEDIMENT SHALL BE REMOVED FROM BEHIND SILT FENCE WHEN IT ACCUMULATES TO HALF THE EXPOSED GEOTEXTILE HEIGHT.
  3. SILT FENCES SHALL BE REMOVED WHEN ADEQUATE VEGETATIVE COVER IS ATTAINED AS APPROVED BY THE CITY.

City of Colorado Springs  
Stormwater Quality

Figure SF-2  
Silt Fence  
Construction Detail and Maintenance  
Requirements

3-36

GENERAL NOTES

1. AT ALL TIMES DURING CONSTRUCTION, THE CONTRACTOR SHALL BE RESPONSIBLE FOR PREVENTING AND CONTROLLING EROSION DUE TO WIND AND RUNOFF. THE CONTRACTOR SHALL ALSO BE RESPONSIBLE FOR MAINTAINING EROSION CONTROL FACILITIES SHOWN.
2. ADDITIONAL EROSION CONTROL MEASURES MAY BE REQUIRED DUE TO UNFORESEEN PROBLEMS OR IF THE PLAN DOES NOT FUNCTION AS INTENDED.
3. CONTRACTOR SHALL BE RESPONSIBLE FOR CLEANING DRAINAGE AND EROSION CONTROL FACILITIES AS REQUIRED. STREETS SHALL BE KEPT CLEAN OF DEBRIS FROM TRAFFIC FROM THIS SITE.
4. ALL AREAS DISTURBED DURING CONSTRUCTION SHALL BE PAVED, SEEDED WITH NATIVE VEGETATION, OR LANDSCAPED. REFER TO LANDSCAPE PLANS FOR PERMANENT SEED MIX AND PLANTING SPECIFICATIONS.
5. EROSION CONTROL STRUCTURES BELOW SODDED AREAS MAY BE REMOVED ONCE SOD AND FINAL LANDSCAPING IS IN PLACE. EROSION CONTROL STRUCTURES BELOW SEEDED AREAS MUST REMAIN IN PLACE UNTIL THE ENTIRE AREA HAS ESTABLISHED A MATURE COVERING OF HEALTHY VEGETATION. EROSION CONTROL IN PROPOSED PAVED AREAS SHALL REMAIN IN PLACE UNTIL PAVEMENT IS COMPLETE.
6. THIS PLAN IS ONLY TO BE USED FOR INSTALLATION OF EROSION CONTROL FACILITIES. DO NOT USE THIS PLAN FOR GRADING OR STORM SEWER CONSTRUCTION.
7. CONTRACTOR SHALL USE VEHICLE TRACKING CONTROL AT ALL LOCATIONS WHERE VEHICLES WILL EXIT THE SITE. CONTROL FACILITIES WILL BE MAINTAINED WHILE CONSTRUCTION IS IN PROGRESS, MOVED WHEN NECESSARY, AND REMOVED WHEN SITE IS PAVED.

MANAGEMENT STRATEGIES

1. VEHICLE TRACKING CONTROL SHALL BE PROVIDED AND MAINTAINED THROUGHOUT THE ENTIRE DURATION OF THE PROJECT.
2. THE INLET PROTECTION SHOWN ON THE ENCLOSED EROSION CONTROL PLAN SHALL BE SECURED AND PLACED ACCORDING TO THE DETAILS CONTAINED ON THIS PLAN.
3. THE CONSTRUCTION SUPERINTENDENT SHALL HAVE OVERALL RESPONSIBILITY FOR PLAN IMPLEMENTATION. SUPERINTENDENT RESPONSIBLE FOR SEEING THAT APPROPRIATE CONSTRUCTION WORKERS AND SUBCONTRACTORS ARE AWARE OF ALL PROVISIONS OF THE PLAN.
4. CONTRACTOR SHALL ESTABLISH FINAL LANDSCAPING STABILIZATION PER THE LANDSCAPING PLANS & EROSION CONTROL PLAN IN THIS SET AT THE COMPLETION OF THE PROJECT.
5. CLEANUP:  
A. TRANSPORT TRASH AND DEBRIS, AND SURPLUS AND UNACCEPTABLE SOIL MATERIALS FROM PROJECT SITE AND LEGALLY DISPOSE OF THEM.  
B. REMOVE ALL TEMPORARY SHORING, BRACING, EROSION CONTROL, AND OTHER PROTECTION DEVICES WHEN NO LONGER REQUIRED BY CITY.

MAINTENANCE

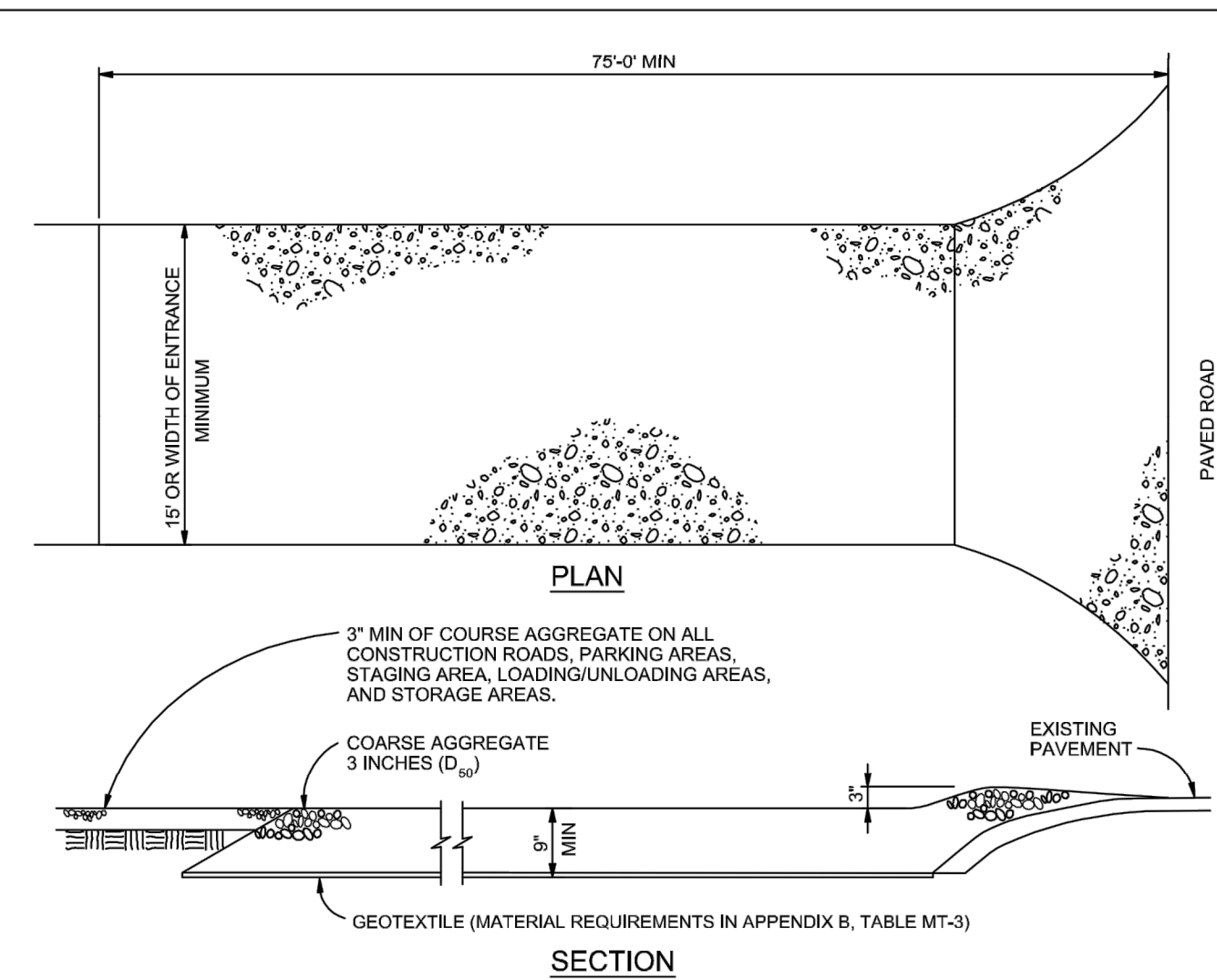
IN GENERAL, ALL EROSION AND SEDIMENT CONTROL MEASURES WILL BE CHECKED WEEKLY AND AFTER EACH SIGNIFICANT RAINFALL. THE FOLLOWING ITEMS WILL BE CHECKED IN PARTICULAR:

1. THE CONSTRUCTION ENTRANCE SHALL BE MAINTAINED IN A CONDITION WHICH WILL PREVENT TRACKING AND FLOW OF MUD ONTO PUBLIC RIGHTS-OF-WAY. ALL MATERIALS SPILLED, DROPPED, WASHED, OR TRACKED FROM VEHICLE OR SITE ONTO ROADWAY MUST BE REMOVED IMMEDIATELY.
2. GRAVEL FILTERS, GRAVEL SOCKS OR OTHER INLET PROTECTION WILL BE CHECKED REGULARLY FOR SEDIMENTATION BUILDUP AND CLEANED AS REQUIRED.

PERFORMANCE STANDARDS

THE GENERAL REQUIREMENTS FOR EROSION CONTROL WORK SHALL BE AS FOLLOWS:

1. ANY LAND DISTURBING ACTIVITY SHALL BE CONDUCTED IN SUCH A MANNER SO AS TO EFFECTIVELY REDUCE ACCELERATED SOIL EROSION AND RESULTING SEDIMENTATION.
2. STRUCTURAL EROSION CONTROL MEASURES INCLUDED IN THE APPROVED PLAN ARE TO BE INSTALLED PRIOR TO SOIL DISTURBANCE. INSTALLATION WILL MEET SPECIFICATIONS SHOWN ON THE DETAIL SHEET. CONTROL MEASURES NECESSARY FOR CONTINUING PHASES OF CONSTRUCTION SHALL BE INSTALLED AS DETAILED IN THE SUBMITTED CONSTRUCTION SCHEDULE OR AS NEEDED IN PROGRESSION TO THE FINAL EROSION CONTROL PLAN.
3. ALL LAND DISTURBING ACTIVITIES SHALL BE DESIGNED, CONSTRUCTED AND COMPLETED IN SUCH A MANNER THAT THE EXPOSURE TIME OF DISTURBED LAND SHALL BE LIMITED TO THE SHORTEST POSSIBLE PERIOD OF TIME. SEDIMENT CAUSED BY ACCELERATED SOIL EROSION SHALL BE REMOVED FROM RUNOFF WATER BEFORE LEAVING THE SITE.
4. ANY TEMPORARY OR PERMANENT FACILITY DESIGNED AND CONSTRUCTED FOR THE CONVEYANCE OF WATER AROUND, THROUGH OR FROM THE LAND DISTURBING ACTIVITY SHALL BE DESIGNED TO LIMIT THE WATER FLOW TO A NON-EROSIVE VELOCITY.
5. TEMPORARY SOIL EROSION CONTROL FACILITIES SHALL BE REMOVED AND AREAS OF LAND DISTURBANCE GRADED AND STABILIZED WITH PERMANENT SOIL EROSION CONTROL MEASURES PURSUANT TO APPROVED PLANS AND SPECIFICATIONS.
6. THE PERMITTEE IS RESPONSIBLE FOR MAINTENANCE OF ALL EROSION CONTROL STRUCTURES. THESE STRUCTURES ARE TO BE INSPECTED BY THE PERMITTEE EVERY 14 DAYS AND AFTER EVERY PRECIPITATION EVENT TO INSURE THEIR EFFICIENCY AND TO EVALUATE MAINTENANCE NEEDS OR PER LOCAL INSPECTION REQUIREMENTS. MAINTENANCE OF THESE STRUCTURES MAY BE DIRECTED AT ANY TIME BY A CITY OR STATE REPRESENTATIVE.
7. THESE STANDARDS DO NOT SUPPLANT ANY CITY, STATE OR FEDERAL REQUIREMENTS. CONTRACTOR SHALL ALWAYS ADHERE TO THE STRICTER STANDARD SHOULD ANY DISCREPANCY ARISE.



Vehicle Tracking  
NTS

VEHICLE TRACKING NOTES

INSTALLATION REQUIREMENTS

1. ALL ENTRANCES TO THE CONSTRUCTION SITE ARE TO BE STABILIZED PRIOR TO CONSTRUCTION BEGINNING.
2. CONSTRUCTION ENTRANCES ARE TO BE BUILT WITH AN APRON TO ALLOW FOR TURNING TRAFFIC, BUT SHOULD NOT BE BUILT OVER EXISTING PAVEMENT EXCEPT FOR A SLIGHT OVERLAP.
3. AREAS TO BE STABILIZED ARE TO BE PROPERLY GRADED AND COMPACTED PRIOR TO LAYING DOWN GEOTEXTILE AND STONE.
4. CONSTRUCTION ROADS, PARKING AREAS, LOADING/UNLOADING ZONES, STORAGE AREAS, AND STAGING AREAS ARE TO BE STABILIZED.
5. CONSTRUCTION ROADS ARE TO BE BUILT TO CONFORM TO SITE GRADES, BUT SHOULD NOT HAVE SIDE SLOPES OR ROAD GRADES THAT ARE EXCESSIVELY STEEP.

MAINTENANCE REQUIREMENTS

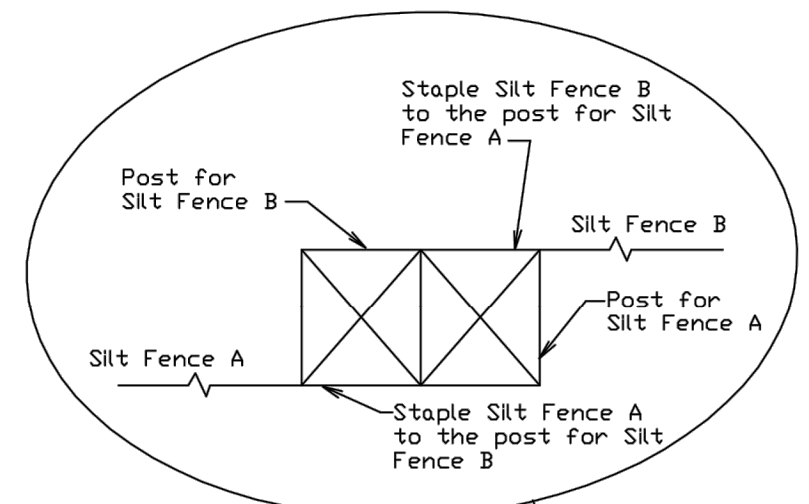
1. REGULAR INSPECTIONS ARE TO BE MADE OF ALL STABILIZED AREAS, ESPECIALLY AFTER STORM EVENTS.
2. STONES ARE TO BE REAPPLIED PERIODICALLY AND WHEN REPAIR IS NECESSARY.
3. SEDIMENT TRACKED ONTO PAVED ROADS IS TO BE REMOVED DAILY BY SHOVELING OR SWEEPING. SEDIMENT IS NOT TO BE WASHED DOWN STORM SEWER DRAINS.
4. STORM SEWER INLET PROTECTION IS TO BE IN PLACE, INSPECTED, AND CLEANED IF NECESSARY.
5. OTHER ASSOCIATED SEDIMENT CONTROL MEASURES ARE TO BE INSPECTED TO ENSURE GOOD WORKING CONDITION.

City of Colorado Springs  
Stormwater Quality

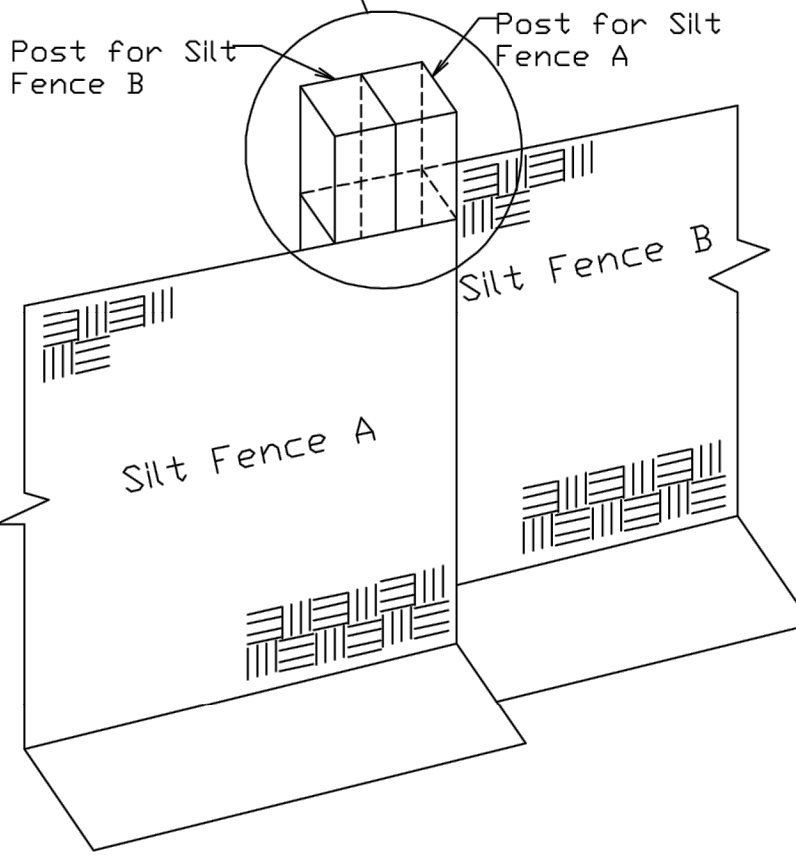
Figure VT-2  
Vehicle Tracking  
Application Examples

3-54

Top View of Silt Fence Posts Detail



Refer to "Top View of Silt Fence Posts Detail"



City of Colorado Springs  
Stormwater Quality

Figure SF-3  
Silt Fence Joint Tying  
Construction Detail and Maintenance  
Requirements

3-37

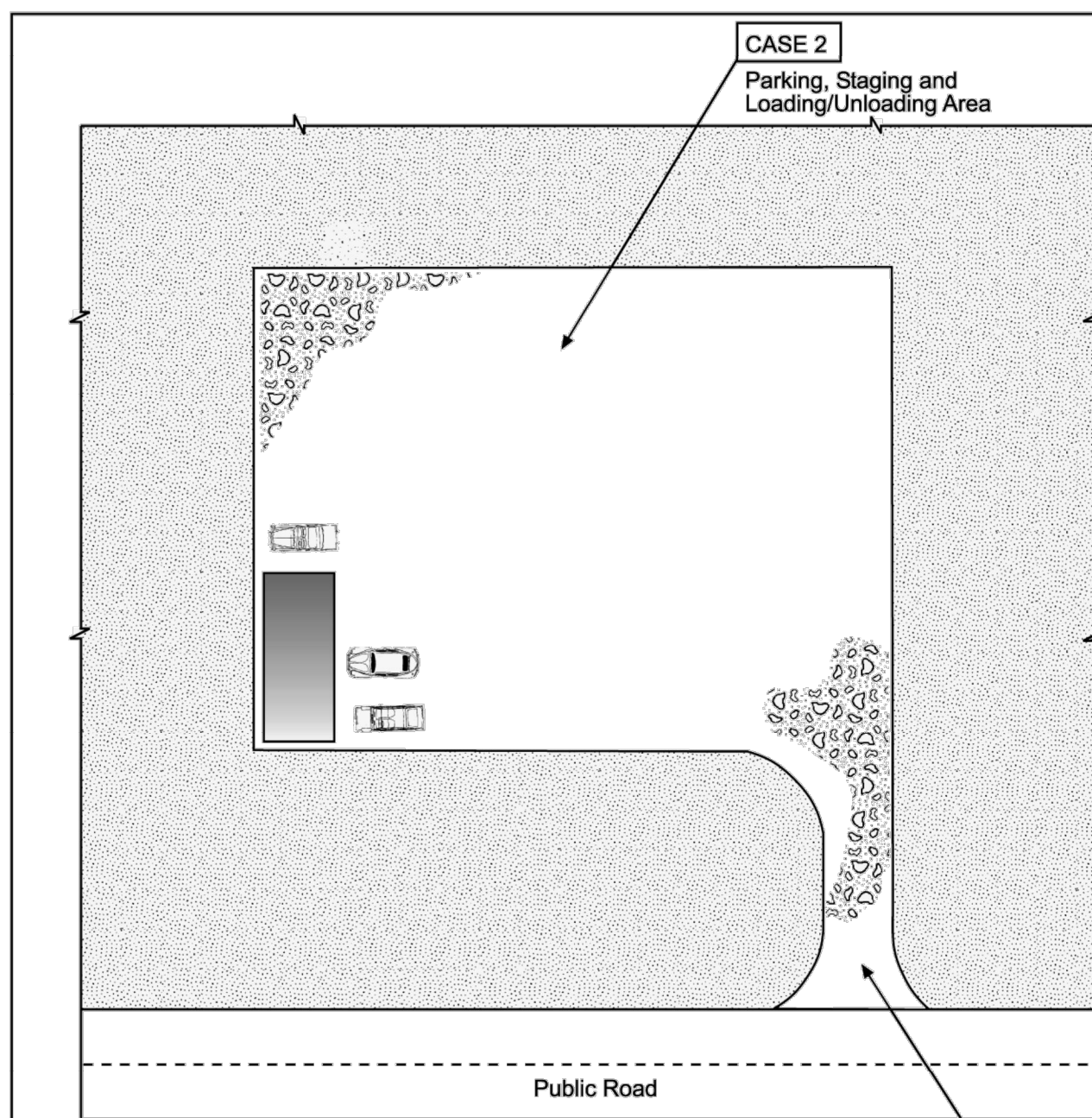


Table VT-1

	Case 1	Case 2
Gravel Thickness	9"	3"
Filter Fabric	YES	NO

City of Colorado Springs  
Storm Water Quality

Figure VT-1  
Vehicle Tracking  
Application Examples

DENM153722.CS.CBPGVT-19-09

3-53

COPYRIGHT

THESE PLANS ARE AN INSTRUMENT OF SERVICE AND ARE THE PROPERTY OF GALLOWAY, AND MAY NOT BE DUPLICATED, DISCLOSED, OR REPRODUCED WITHOUT THE WRITTEN CONSENT OF GALLOWAY. COPYRIGHTS AND INFRINGEMENTS WILL BE ENFORCED AND PROSECUTED.



King Soopers / Petroleum  
65 Tejon Street  
Denver, CO 80223  
Phone (303) 778-3053  
Fax (303) 871-9262

KING SOOPERS #147  
FALCON MARKETPLACE  
LOTS 2 & 3, BLOCK 1  
E. WOODMEN ROAD & MERIDIAN ROAD  
FALCON, CO

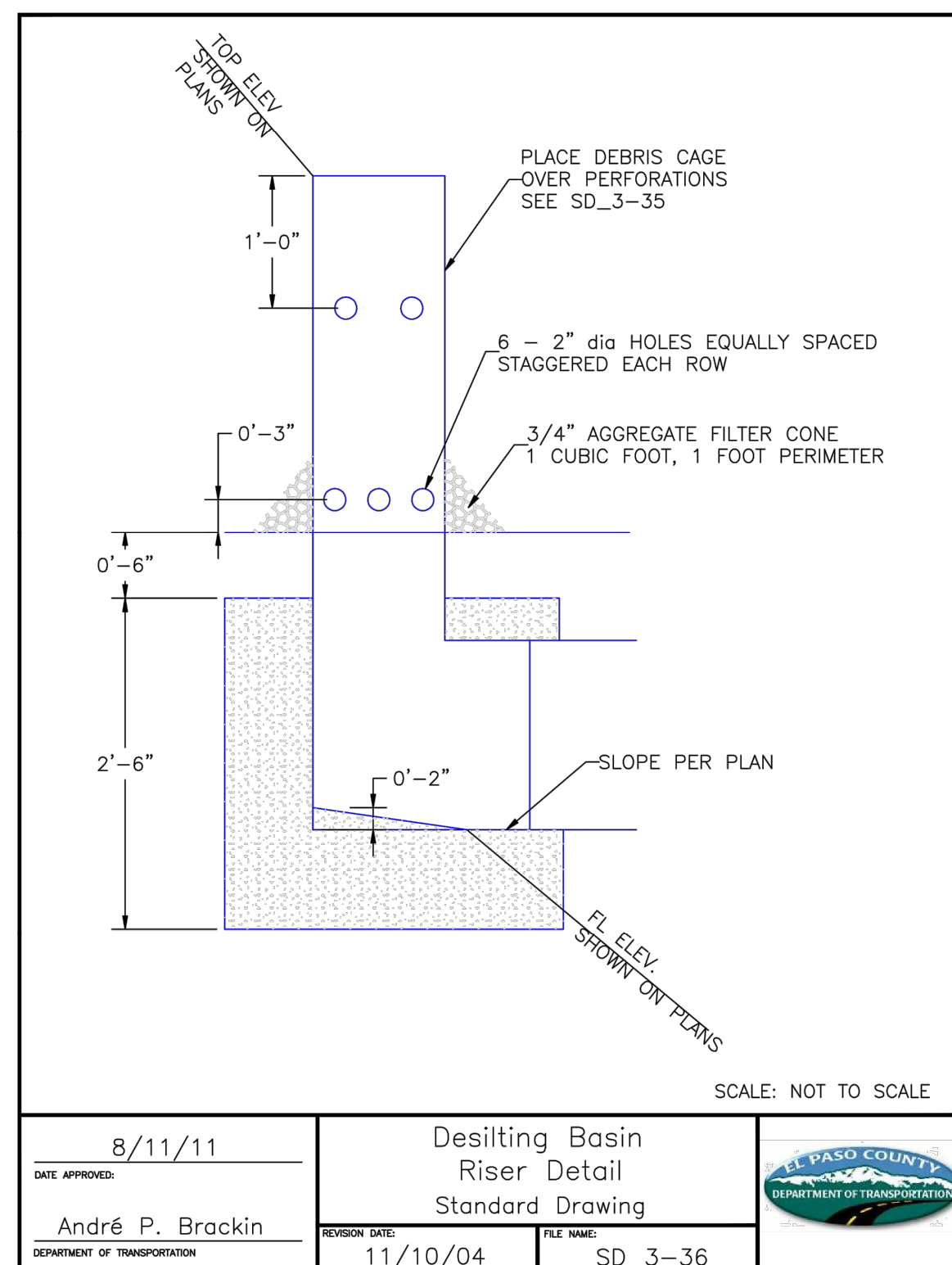
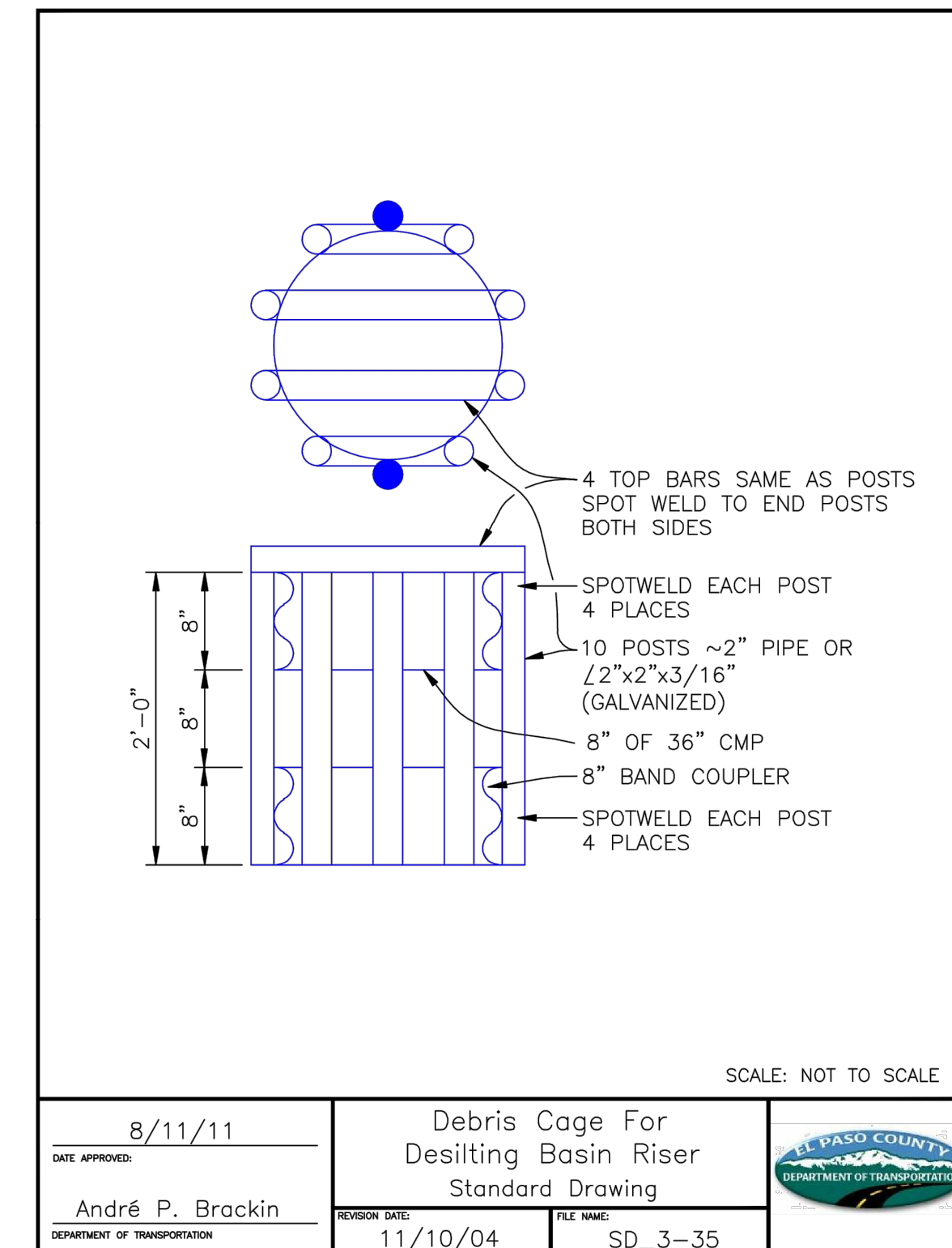
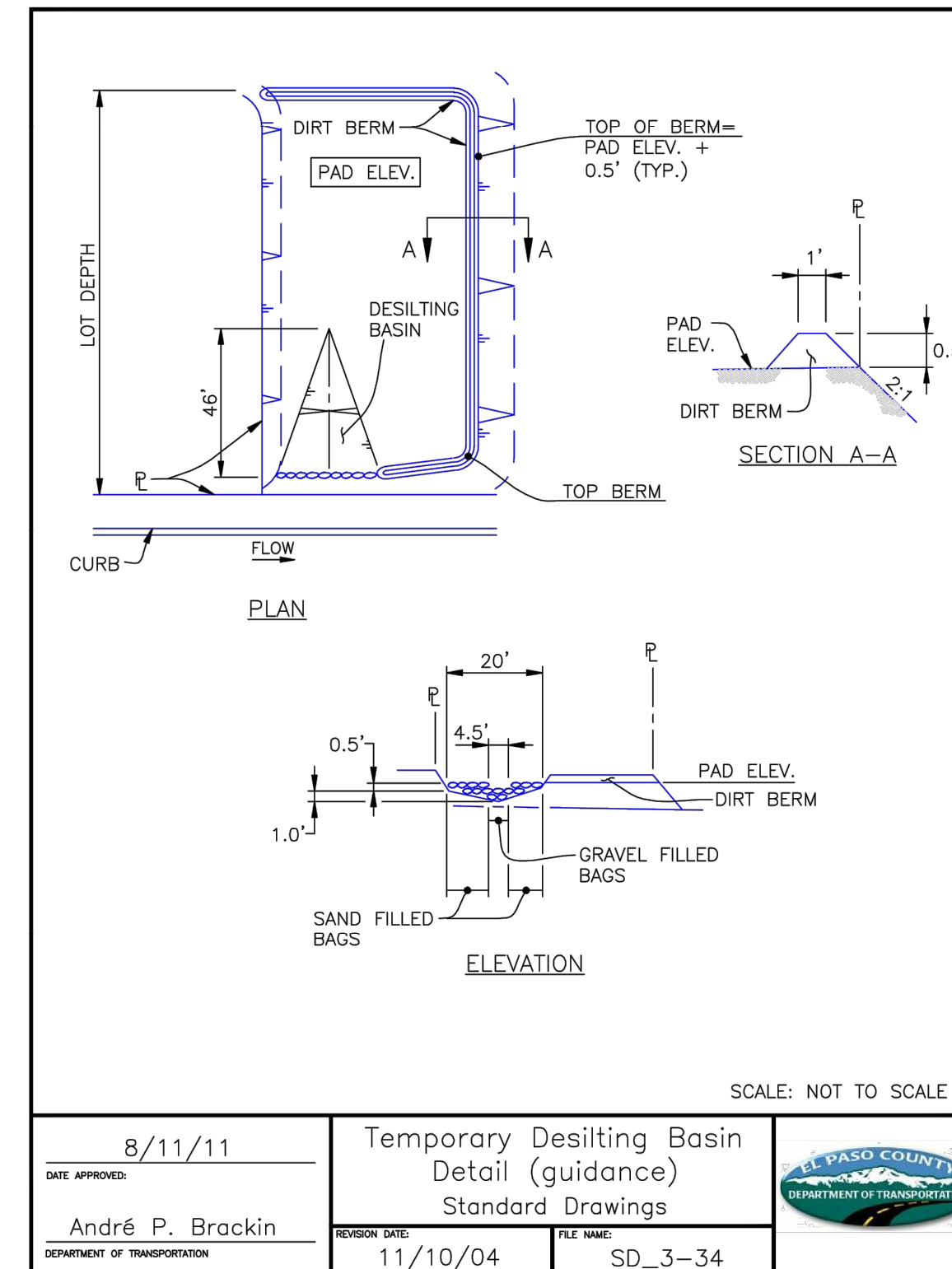
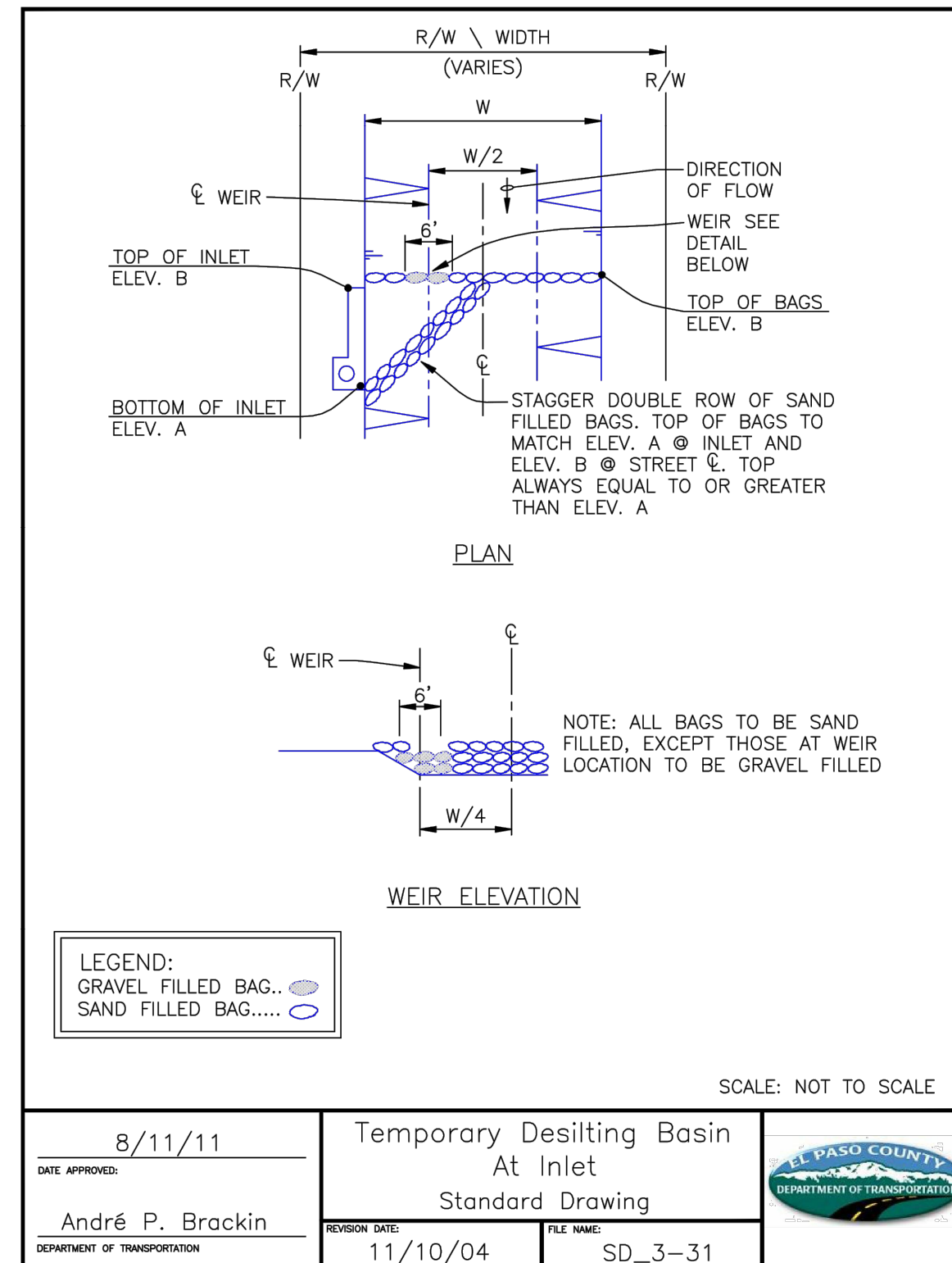
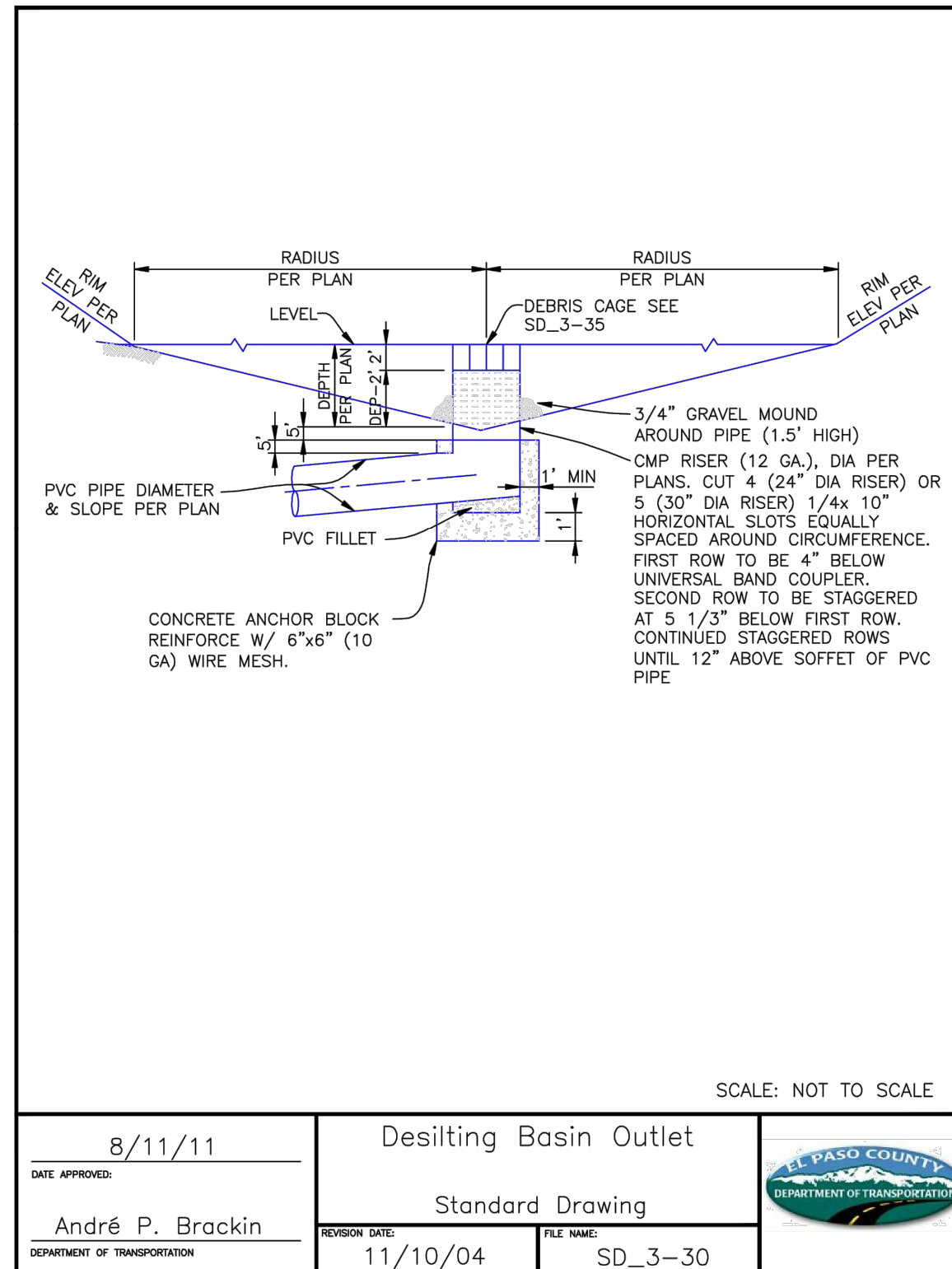
#	Date	Issue / Description	Init.
1	12/19/19	2nd SDP SUBMITTAL	ACJ
2			
3			
4			
5			
6			
7			
8			
9			
10			
11			
12			
13			
14			
15			
16			
17			
18			
19			
20			

Project No: KSS000147  
Drawn By: ACJ  
Checked By: JRR  
Date: 8/29/19

GRADING AND EROSION CONTROL  
DETAILS



**KING SOOPERS #147  
FALCON MARKETPLACE LOTS 2 & 3, BLOCK 1  
A PORTION OF SECTION 1, TOWNSHIP 13 SOUTH, RANGE 65 WEST  
OF THE 6TH P.M., EL PASO COUNTY, COLORADO  
GRADING AND EROSION CONTROL PLAN**



Provide Erosion Control Blanket Detail - if proposed

Provide CWA Detail.

Provide Sediment Basin Detail.

**COPYRIGHT**  
THESE PLANS ARE AN INSTRUMENT OF SERVICE AND ARE THE PROPERTY OF GALLOWAY, AND MAY NOT BE DUPLICATED, DISCLOSED, OR REPRODUCED WITHOUT THE WRITTEN CONSENT OF GALLOWAY. COPYRIGHTS AND INFRINGEMENTS WILL BE ENFORCED AND PROSECUTED.



King Soopers  
Supermarket / Petroleum  
65 Tejon Street  
Denver, CO 80223  
Phone (303) 778-3053  
Fax (303) 871-9262

KING SOOPERS #147  
FALCON MARKETPLACE  
LOTS 2 & 3, BLOCK 1  
  
E. WOODMEN ROAD & MERIDIAN ROAD  
FALCON, CO

[illegible]

Project No:	KSS000147
Drawn By:	ACJ
Checked By:	JRR
Date:	8/29/19

## GRADING AND EROSION CONTROL DETAILS

C2.4



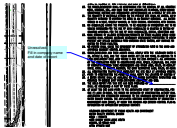
# GEC V\_2 redlines.pdf Markup Summary

CFurchak (11)



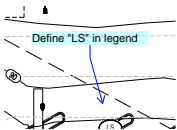
**Subject:** Engineer  
**Page Label:** [2] 2 EROSION CONTROL PLAN - INITIAL & INTERIM  
**Author:** CFurchak  
**Date:** 3/5/2020 11:13:35 AM  
**Status:**  
**Color:** ■  
**Layer:**  
**Space:**

Move GEC notes to cover page. Do not need to duplicate on each sheet



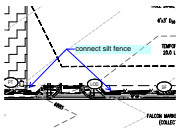
**Subject:** Engineer  
**Page Label:** [2] 2 EROSION CONTROL PLAN - INITIAL & INTERIM  
**Author:** CFurchak  
**Date:** 3/5/2020 11:13:49 AM  
**Status:**  
**Color:** ■  
**Layer:**  
**Space:**

Unresolved.  
Fill in company name and date of report



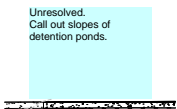
**Subject:** Engineer  
**Page Label:** [3] 3 EROSION CONTROL PLAN - FINAL  
**Author:** CFurchak  
**Date:** 3/5/2020 11:15:07 AM  
**Status:**  
**Color:** ■  
**Layer:**  
**Space:**

Define "LS" in legend



**Subject:** Engineer  
**Page Label:** [2] 2 EROSION CONTROL PLAN - INITIAL & INTERIM  
**Author:** CFurchak  
**Date:** 3/5/2020 11:35:32 AM  
**Status:**  
**Color:** ■  
**Layer:**  
**Space:**

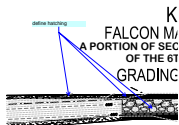
connect silt fence



**Subject:** Engineer  
**Page Label:** [2] 2 EROSION CONTROL PLAN - INITIAL & INTERIM  
**Author:** CFurchak  
**Date:** 3/5/2020 11:55:11 AM  
**Status:**  
**Color:** ■  
**Layer:**  
**Space:**

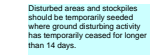
Unresolved.  
Call out slopes of detention ponds.





**Subject:** Engineer  
**Page Label:** [2] 2 EROSION CONTROL PLAN - INITIAL & INTERIM  
**Author:** CFurchak  
**Date:** 3/5/2020 11:57:09 AM  
**Status:**  
**Color:** ■  
**Layer:**  
**Space:**

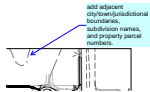
define hatching



ST

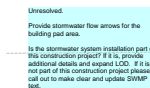
**Subject:** Engineer  
**Page Label:** [2] 2 EROSION CONTROL PLAN - INITIAL & INTERIM  
**Author:** CFurchak  
**Date:** 3/5/2020 2:44:39 PM  
**Status:**  
**Color:** ■  
**Layer:**  
**Space:**

Disturbed areas and stockpiles should be temporarily seeded where ground disturbing activity has temporarily ceased for longer than 14 days.



**Subject:** Engineer  
**Page Label:** [1] 1 COVER SHEET  
**Author:** CFurchak  
**Date:** 3/5/2020 4:59:08 PM  
**Status:**  
**Color:** ■  
**Layer:**  
**Space:**

add adjacent city/town/jurisdictional boundaries, subdivision names, and property parcel numbers.



**Subject:** Engineer  
**Page Label:** [2] 2 EROSION CONTROL PLAN - INITIAL & INTERIM  
**Author:** CFurchak  
**Date:** 3/9/2020 7:01:30 AM  
**Status:**  
**Color:** ■  
**Layer:**  
**Space:**

Unresolved.

Provide stormwater flow arrows for the building pad area.

Is the stormwater system installation part of this construction project? If it is, provide additional details and expand LOD. If it is not part of this construction project please call out to make clear and update SWMP text.



**Subject:** Engineer  
**Page Label:** [2] 2 EROSION CONTROL PLAN - INITIAL & INTERIM  
**Author:** CFurchak  
**Date:** 3/9/2020 8:02:26 AM  
**Status:**  
**Color:** ■  
**Layer:**  
**Space:**

Call out work that is not associated with this filing (i.e., detention ponds, stormwater lines, etc.)



**Subject:** Engineer  
**Page Label:** [5] 5 GRADING AND EROSION CONTROL DETAILS  
**Author:** CFurchak  
**Date:** 3/9/2020 8:02:58 AM  
**Status:**  
**Color:** ■  
**Layer:**  
**Space:**

Provide Erosion Control Blanket Detail - if proposed

Provide CWA Detail.

Provide Sediment Basin Detail.