



September 14, 2021

EPC - Planning  
2880 International Circle  
Colorado Springs, CO 80910

**SUBJECT:** Administrative Determination Request Letter  
Mountain View Electric Association, Inc. (MVEA)  
EPC County File No. TBD

Dear EPC Planning:

Mountain View Electric Association, Inc (MVEA) will be constructing a 12.5 kV underground electrical distribution feeder line running along the east side of Vollmer Road. The underground installation will be approximately 1.75 miles in length and will begin near the intersection of Vollmer Road and Poco Road. The installation will run south parallel to Vollmer Road within a platted 20' utility easement until reaching Briargate Parkway. It continues southeast along the southeast side of Briargate Parkway in a platted 20' utility easement. The line then crosses and terminates along the southeast side of Wheatland Drive.

The utility line is located in sections 28 and 33, 12S, 65W of the 6<sup>th</sup> P.M., El Paso County, Colorado. Site maps are attached.

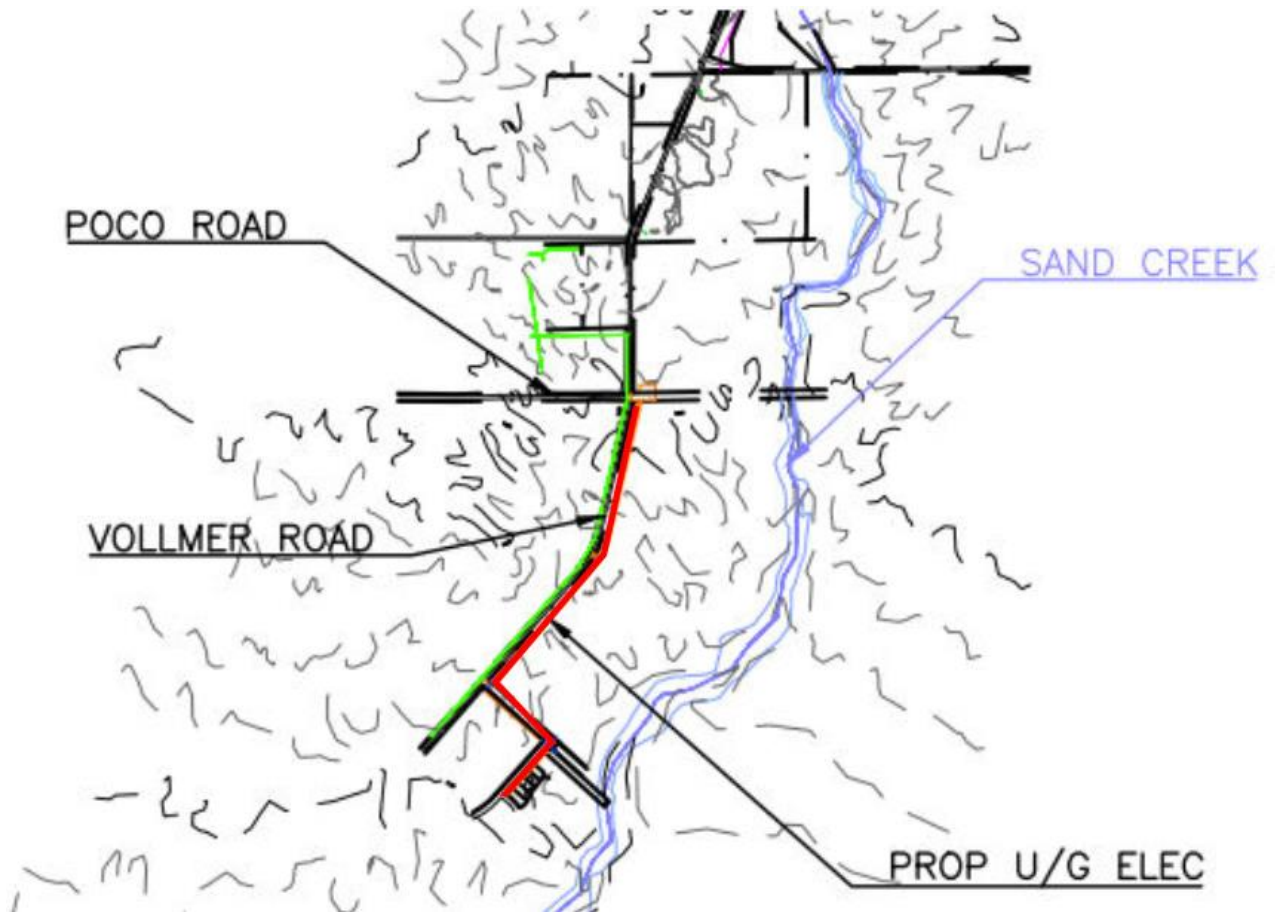
MVEA is requesting an exemption for these projects per section 5.104 (4) of the EPC Land Development Code. 1041 Regulations are not applicable to this project due to the utility installation being a 12.5kv lower-voltage distribution line, not 115 kV or more. This is not construction of a transmission line, nor construction of a major facility of a public utility.

Sincerely,

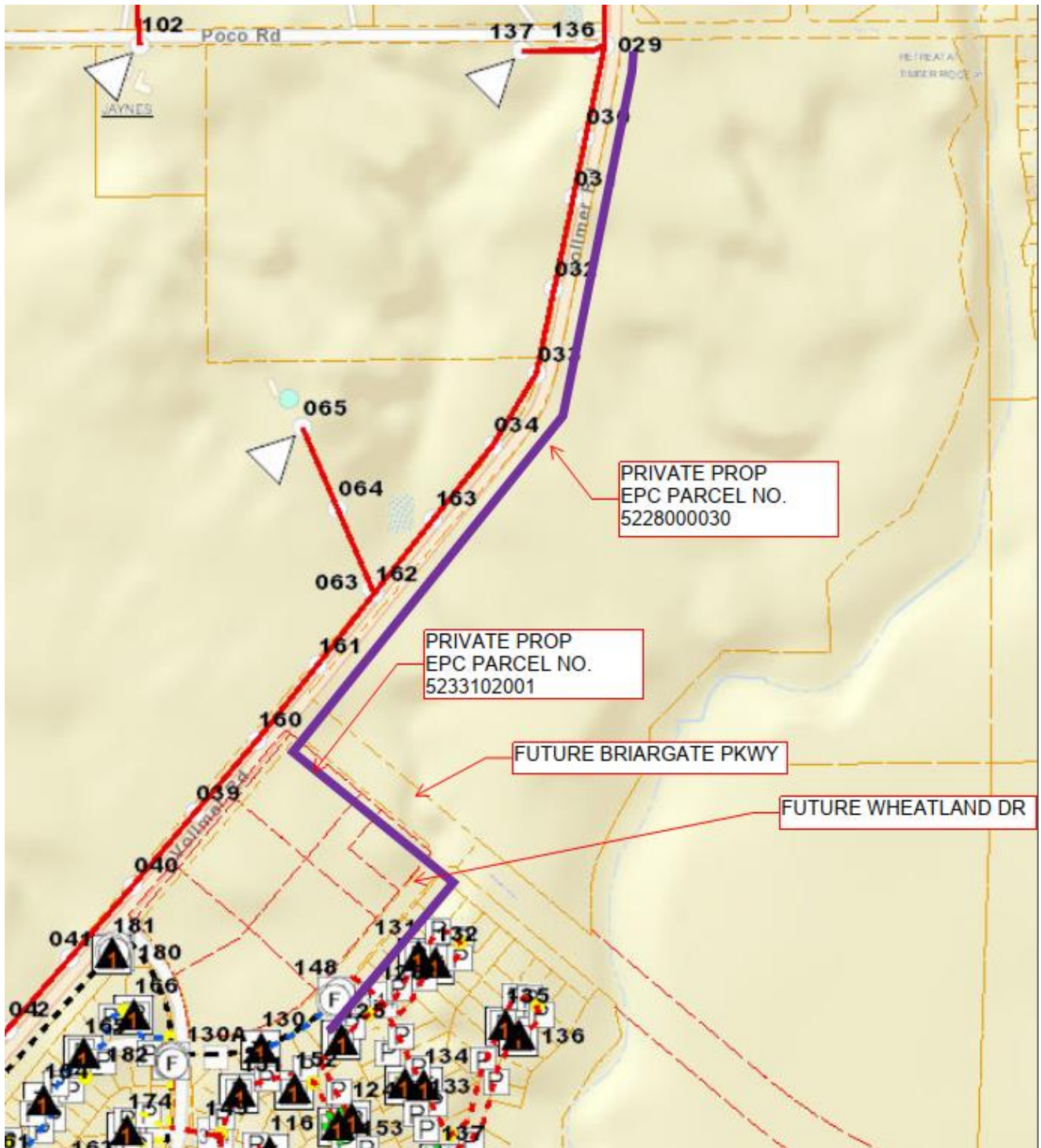
Amy Carlsen  
Right of Way Specialist

This Association is an equal opportunity provider and employer.





MVEA Vollmer South - Vicinity Map



MVEA Vollmer South - MVEA System Map New (12.5 kv) Distribution Line (shown in purple)