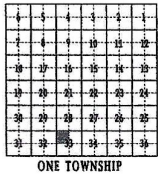
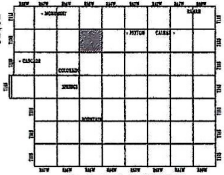


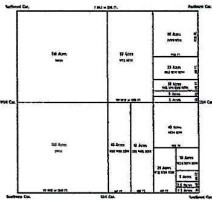
52332



ASSESSOR

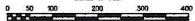


El Paso County Colorado



December 28, 2022

SCALE OF FEET



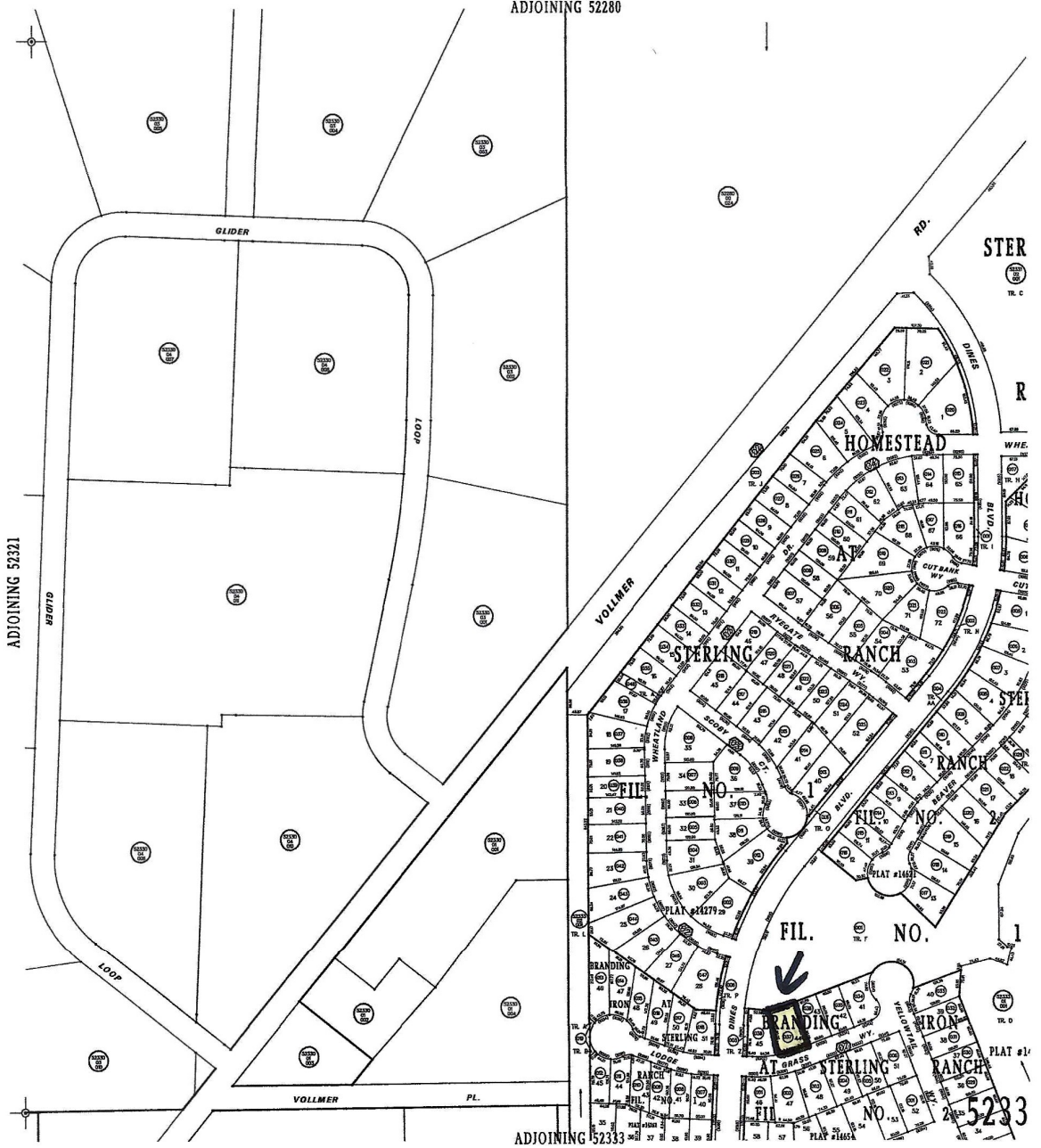
- © Copyright 2015 El Paso County
- © Copyright 2015 Colorado Springs Utilities

All Rights Reserved

*This document is prepared for internal use only and El Paso County makes no claim as to the accuracy or completeness of this document.*

52332

ADJOINING 52280



STER

R

WHE

CU

CU

CU

CU

CU

CU

CU

CU

CU

CU

CU

CU

CU

CU

CU

CU

CU

CU

CU

CU

CU

CU

CU

CU

CU

CU

CU

5233