

PROJECT DESCRIPTION

AT&T WIRELESS PROPOSES TO MODIFY AN EXISTING WIRELESS INSTALLATION. THE SCOPE WILL CONSIST OF THE FOLLOWING:

ROOFTOP WORK:

- REMOVE (12) RRHs
- REMOVE (9) ANTENNAS
- REMOVE (3) TMAs
- INSTALL (12) ANTENNAS
- INSTALL (9) RRHs
- INSTALL (1) DC9
- INSTALL (1) FIBER TRUNK
- INSTALL (1) POWER TRUNK

GROUND WORK:

- REMOVE (6) CONVERTERS
- INSTALL (10) CONVERTERS
- INSTALL (2) CONVERTER KITS
- INSTALL (2) RECTIFIERS
- INSTALL (8) BATTERIES
- INSTALL (1) FLEX 42
- INSTALL (1) GENERIC BBU
- INSTALL (1) DC12-48-60-0-25E

SITE NAME: FONTAINE & POWERS

SITE NUMBER: COLO2099



NOKIA MARKETS MODERNIZATION

IWM NUMBER: WSUTH0033975

FA #: 10115180

ROOFTOP

ENGINEERING

2021 INTERNATIONAL FIRE CODE
 2021 INTERNATIONAL BUILDING CODE OR LATEST ADOPTED EDITION
 2020 NATIONAL ELECTRIC CODE OR LATEST ADOPTED EDITION
 TIA/EIA-222-H OR LATEST EDITION

GENERAL NOTES

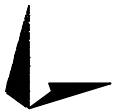
THE FACILITY IS UNMANNED AND NOT FOR HUMAN HABITATION. A TECHNICIAN WILL VISIT THE SITE AS REQUIRED FOR ROUTINE MAINTENANCE. THE PROJECT WILL NOT RESULT IN ANY SIGNIFICANT DISTURBANCE OR EFFECT ON DRAINAGE. NO SANITARY SEWER SERVICE, POTABLE WATER, OR TRASH DISPOSAL IS REQUIRED AND NO COMMERCIAL SIGNAGE IS PROPOSED.



188 INVERNESS DRIVE WEST
 SUITE 400
 ENGLEWOOD, CO 80112



BLACK & VEATCH
 4600 SOUTH SYRACUSE STREET
 SUITE 800
 DENVER, COLORADO 80237



TOWER ENGINEERING PROFESSIONALS
 326 TRYON RD. RALEIGH, NC
 27603 OFFICE: (919) 661-6351

PROJECT#:	314248
DRAWN BY:	KRS
CHECKED BY:	KOO
RFDS:	N/A

REV	DATE	DESCRIPTION
0	07/23/24	ISSUED FOR CONSTRUCTION
A	06/24/24	ISSUED FOR REVIEW



July 23, 2024

IT IS A VIOLATION OF LAW FOR ANY PERSON, UNLESS THEY ARE ACTING UNDER THE DIRECTION OF A LICENSED PROFESSIONAL ENGINEER, TO ALTER THIS DOCUMENT.

FONTAINE & POWERS
 COLO2099
 7923 FONTAINE BLVD
 COLORADO SPRINGS, CO 80925
 NOKIA MARKETS MODERNIZATION

SHEET TITLE
TITLE SHEET

SHEET NUMBER

T-1

SITE INFORMATION

PROPERTY OWNER: Pikes Peak Baptist Temple
 ADDRESS: 7925 FONTAINE BLVD
 COLORADO SPRINGS, CO 80901
 SITE ADDRESS: 7923 FONTAINE BLVD
 COLORADO SPRINGS, CO 80925
 FA: 10115180
 ROOFTOP OWNER: DIAMOND
 COUNTY: EL PASO
 LATITUDE (NAD83): 38° 44' 10.65" N
 LONGITUDE (NAD83): 104° 40' 48.65" W
 GROUND ELEVATION: 5,874' AMSL
 ZONING JURISDICTION: EL PASO COUNTY
 ZONING DISTRICT: PF
 PARCEL NUMBER: 5521002016
 OCCUPANCY GROUP: U
 CONSTRUCTION TYPE: V-B
 POWER COMPANY: COLORADO SPRINGS UTILITIES
 TELEPHONE COMPANY: N/A
 SITE ACQUISITION MANAGER: CORY HAMMEN
 (414) 455-2289
 CONSTRUCTION MANAGER: JOHN RUTKOWITZ
 (303) 264-0523
 RON BLEDSOE
 (913) 458-8114
 RF ENGINEER:

VICINITY MAP



LOCAL MAP



NO SCALE

SHEET NO.	SHEET TITLE	DRAWING INDEX
T-1	TITLE SHEET	
C-1	SITE PLAN	
C-1.1	ENLARGED SITE PLAN	
C-2	EQUIPMENT LAYOUTS	
C-3	ELEVATIONS	
C-4	ANTENNA LAYOUTS	
C-5	ANTENNA SCHEDULE	
C-6	EQUIPMENT DETAILS	
C-6.1	EQUIPMENT DETAILS	
E-1	ELECTRICAL AC ONE-LINE DIAGRAM	
E-2	ELECTRICAL DC ONE-LINE DIAGRAM	
G-1	GROUNDING ONE-LINE DIAGRAM	
G-2	GROUNDING DETAILS	
GN-1	LEGEND & ABBREVIATIONS	
GN-2	GENERAL CONSTRUCTION NOTES	
GN-3	GENERAL SITE WORK & DRAINAGE NOTES	
GN-4	GENERAL CONCRETE WORK NOTES	
GN-5	GENERAL STRUCTURAL STEEL NOTES	
GN-6	GENERAL ELECTRICAL NOTES	
GN-7	BATTERY SAFETY NOTES	

11"x17" PLOT WILL BE HALF SCALE UNLESS OTHERWISE NOTED

CONTRACTOR SHALL VERIFY ALL PLANS, EXISTING DIMENSIONS, AND CONDITIONS ON THE JOB SITE, AND SHALL IMMEDIATELY NOTIFY THE ENGINEER IN WRITING OF ANY DISCREPANCIES BEFORE PROCEEDING WITH THE WORK.



UNDERGROUND SERVICE ALERT
 UTILITY NOTIFICATION CENTER OF COLORADO
 (800) 922-1987
 WWW.UNCC.ORG

3 WORKING DAYS UTILITY NOTIFICATION PRIOR TO CONSTRUCTION

CONTACT INFORMATION

ENGINEER: BLACK & VEATCH CORPORATION
 4600 SOUTH SYRACUSE STREET, SUITE 800
 DENVER, CO 80237
 CONTACT: DAN GRUMAN
 PHONE: (913) 458-6112

DRIVING DIRECTIONS

DIRECTIONS FROM COLORADO SPRINGS AIRPORT


HEAD NORTH ON MILTON E PROBY PKWY. KEEP LEFT TO CONTINUE ON MILTON E PROBY PARKWAY AIRPORT EXIT. USE THE RIGHT LANE TO TURN SLIGHTLY LEFT ONTO MILTON E PROBY PKWY. TURN LEFT ONTO PEAK INNOVATION PKWY. AT THE ROUNDABOUT, TAKE THE 2ND EXIT AND STAY ON PEAK INNOVATION PKWY. TURN LEFT ONTO CO-21 S. SLIGHT LEFT TOWARD FONTAINE BLVD. TURN LEFT ONTO FONTAINE BLVD. TURN RIGHT. TURN RIGHT.

NOTES

1. PASSING STRUCTURAL ANALYSIS (CONFORMING TO TIA-222-H) FOR THE EXISTING ROOFTOP WAS COMPLETED BY ACCELERATED TOWER ENGINEERING ON 05/16/2024. ACCORDING TO THIS ANALYSIS, THE EXISTING ROOFTOP HAS SUFFICIENT CAPACITY TO SUPPORT THE LOADING INDICATED.
2. A PASSING ANTENNA MOUNT ANALYSIS (CONFORMING TO TIA-222-H) FOR THE EXISTING MOUNT WAS COMPLETED BY ATE ON 05/16/2024. ACCORDING TO THIS ANALYSIS, THE EXISTING MOUNT HAS SUFFICIENT CAPACITY TO SUPPORT THE LOADING INDICATED.

COAX & CABLE INFORMATION


- ALL EXISTING CABLES/COAX TO REMAIN UNLESS NOTED OTHERWISE
- (1) PROPOSED 24 PAIR FIBER TRUNK
- (1) PROPOSED 6AWG DC TRUNK
- (1) EXISTING 18 PAIR FIBER TRUNK
- (4) EXISTING 8AWG DC TRUNKS
- (12) EXISTING 7/8" COAX CABLES



188 INVERNESS DRIVE WEST
SUITE 400
ENGLEWOOD, CO 80112




BLACK & VEATCH
4600 SOUTH SYRACUSE STREET
SUITE 800
DENVER, COLORADO 80237



TOWER ENGINEERING PROFESSIONALS
326 TRYON RD. RALEIGH, NC
27603 OFFICE: (919) 661-6351

PROJECT#:	314248
DRAWN BY:	KRS
CHECKED BY:	KOO
RFDS:	N/A

REV	DATE	DESCRIPTION
0	07/23/24	ISSUED FOR CONSTRUCTION
A	06/24/24	ISSUED FOR REVIEW



July 23, 2024

IT IS A VIOLATION OF LAW FOR ANY PERSON, UNLESS THEY ARE ACTING UNDER THE DIRECTION OF A LICENSED PROFESSIONAL ENGINEER, TO ALTER THIS DOCUMENT.

FONTAINE & POWERS
COLO2099
7923 FONTAINE BLVD
COLORADO SPRINGS, CO 80925
NOKIA MARKETS MODERNIZATION

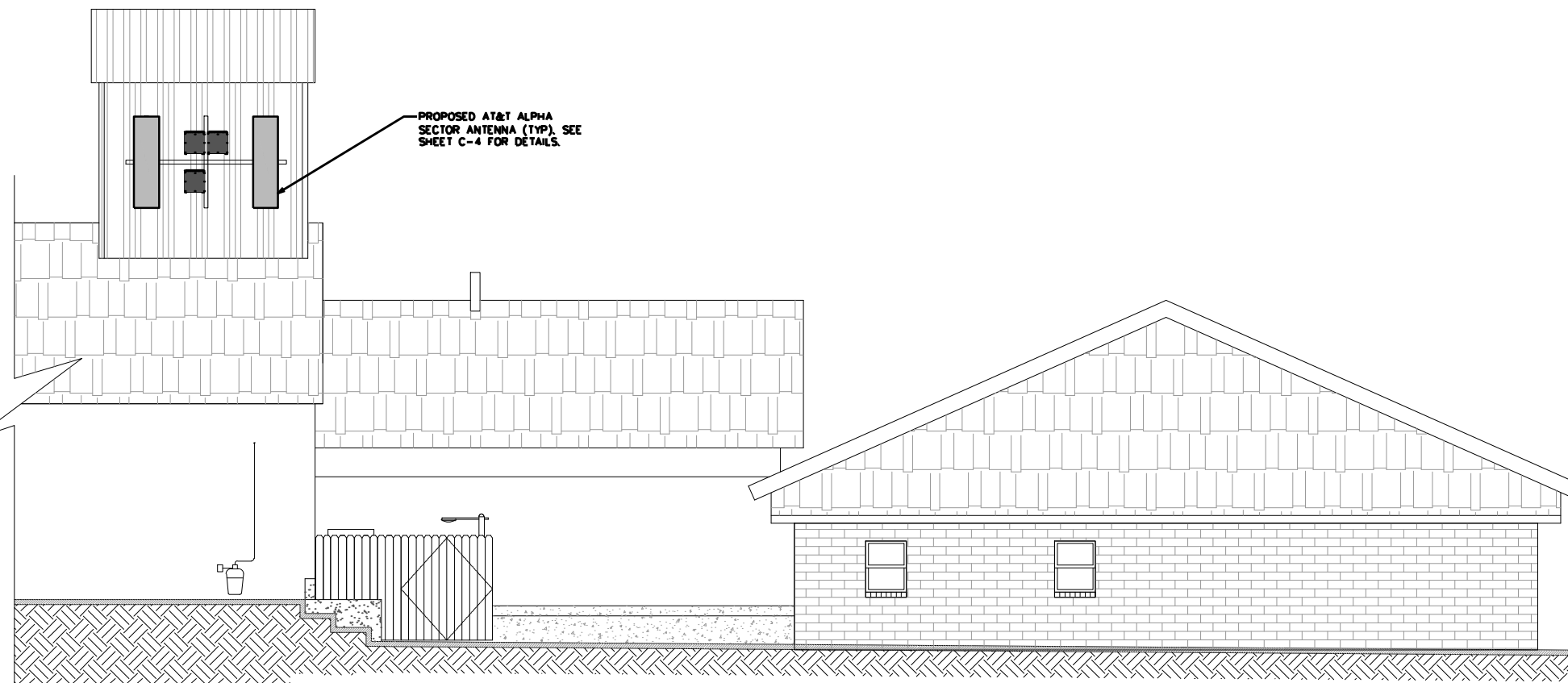
SHEET TITLE
FINAL ELEVATIONS

SHEET NUMBER
C-3

43'-0"±
T/BUILDING

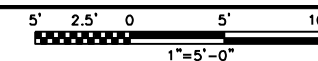
36'-0"±
TIP/AT&T ANTENNAS

0'-0"±
T/CONCRETE



PROPOSED AT&T ALPHA SECTOR ANTENNA (TYP). SEE SHEET C-4 FOR DETAILS.

FINAL NORTH ELEVATION

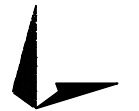




188 INVERNESS DRIVE WEST
SUITE 400
ENGLEWOOD, CO 80112



BLACK & VEATCH
4600 SOUTH SYRACUSE STREET
SUITE 800
DENVER, COLORADO 80237



TOWER ENGINEERING PROFESSIONALS
326 TRYON RD. RALEIGH, NC
27603 OFFICE: (919) 661-6351

PROJECT#:	314248
DRAWN BY:	KRS
CHECKED BY:	KOO
RFDS:	N/A

REV	DATE	DESCRIPTION
0	07/23/24	ISSUED FOR CONSTRUCTION
A	06/24/24	ISSUED FOR REVIEW



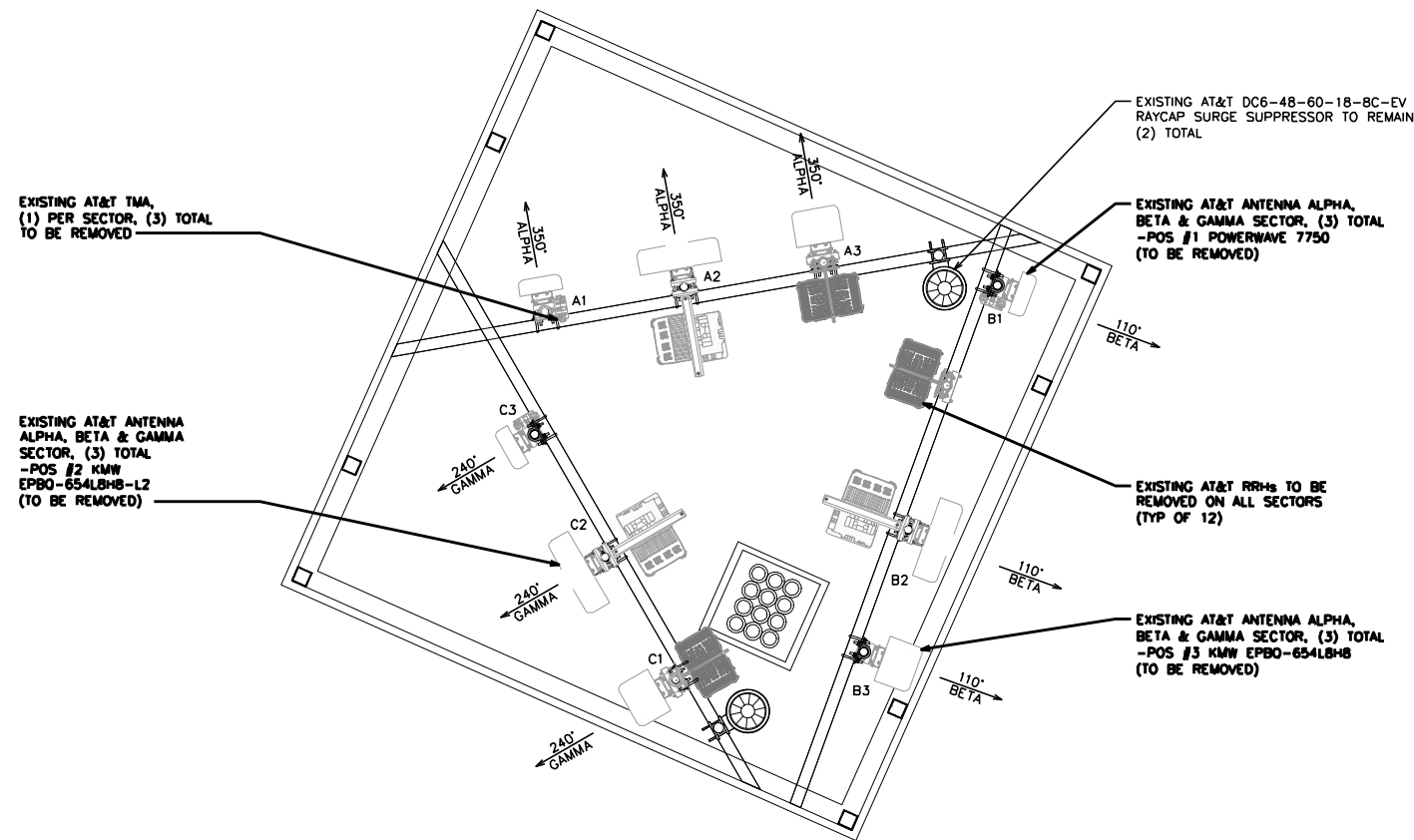
July 23, 2024

IT IS A VIOLATION OF LAW FOR ANY PERSON, UNLESS THEY ARE ACTING UNDER THE DIRECTION OF A LICENSED PROFESSIONAL ENGINEER, TO ALTER THIS DOCUMENT.

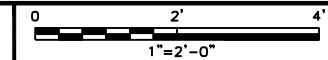
FONTAINE & POWERS
COLO2099
7923 FONTAINE BLVD
COLORADO SPRINGS, CO 80925
NOKIA MARKETS MODERNIZATION

SHEET TITLE
ELEVATIONS

SHEET NUMBER
C-4



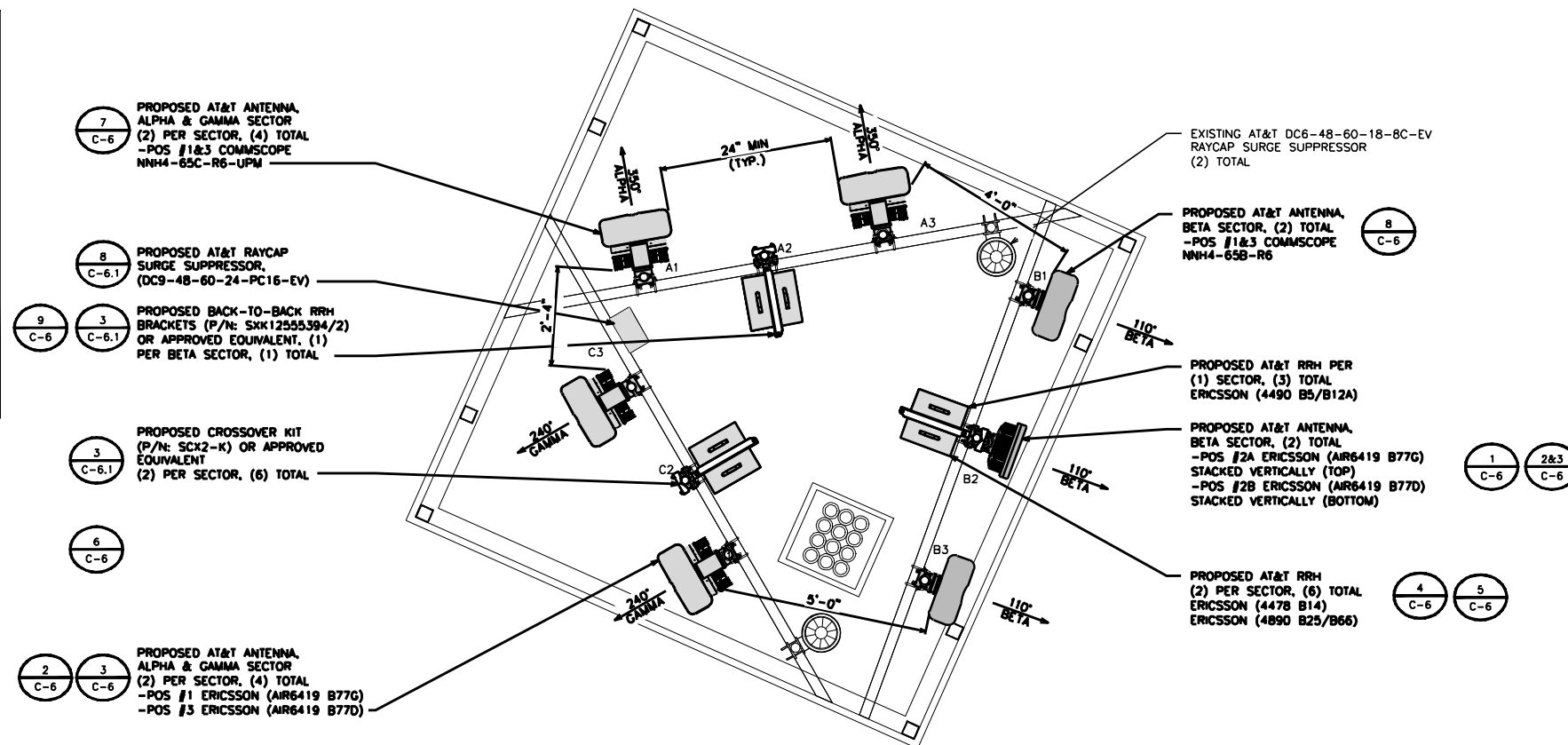
EXISTING ANTENNA LAYOUT



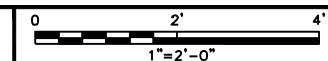
1

NOTE

- PASSING STRUCTURAL ANALYSIS (CONFORMING TO TIA-222-H) FOR THE EXISTING ROOFTOP WAS COMPLETED BY ACCELERATED TOWER ENGINEERING ON 05/16/2024. ACCORDING TO THIS ANALYSIS, THE EXISTING ROOFTOP HAS SUFFICIENT CAPACITY TO SUPPORT THE LOADING INDICATED.
- A PASSING ANTENNA MOUNT ANALYSIS (CONFORMING TO TIA-222-H) FOR THE EXISTING MOUNT WAS COMPLETED BY ATE ON 05/16/2024. ACCORDING TO THIS ANALYSIS, THE EXISTING MOUNT HAS SUFFICIENT CAPACITY TO SUPPORT THE LOADING INDICATED.
- CONTRACTOR TO REWORK EXISTING MOUNTS TO EVENLY SPACE 3 MOUNT PIPES AS FAR AS POSSIBLE. FIELD FABRICATE MOUNT HOLES FOR ANTENNA PIPE POSITIONS AS NEEDED.
- ANTENNA PIPE MOUNTS TO BE EVENLY SPACED (PER SECTOR). ENSURE 24" MIN SPACING IS MAINTAINED BETWEEN ANTENNAS.



PROPOSED ANTENNA LAYOUT



2