

**PROJECT DESCRIPTION**

AT&T WIRELESS PROPOSES TO MODIFY AN EXISTING WIRELESS INSTALLATION. THE SCOPE WILL CONSIST OF THE FOLLOWING:

**ROOFTOP WORK:**

- REMOVE (12) RRHs
- REMOVE (9) ANTENNAS
- REMOVE (3) TMs
- INSTALL (12) ANTENNAS
- INSTALL (9) RRHs
- INSTALL (1) DC9
- INSTALL (1) FIBER TRUNK
- INSTALL (1) POWER TRUNK

**GROUND WORK:**

- REMOVE (6) CONVERTERS
- INSTALL (10) CONVERTERS
- INSTALL (2) CONVERTER KITS
- INSTALL (2) RECTIFIERS
- INSTALL (8) BATTERIES
- INSTALL (1) FLEX 42
- INSTALL (1) GENERIC BBU
- INSTALL (1) DC12-48-60-0-25E

# SITE NAME: FONTAINE & POWERS

## SITE NUMBER: COLO2099



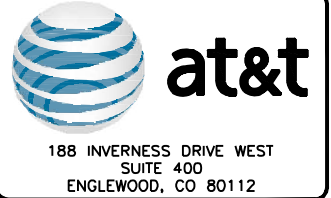
### NOKIA MARKETS MODERNIZATION

#### IWM NUMBER: WSUTH0033975

#### FA #: 10115180

#### ROOFTOP

File No.  
TWR2417



PROJECT#:	314248
DRAWN BY:	KRS
CHECKED BY:	KOO
RFDS:	N/A

**ENGINEERING**

2021 INTERNATIONAL FIRE CODE  
2021 INTERNATIONAL BUILDING CODE OR LATEST ADOPTED EDITION  
2020 NATIONAL ELECTRIC CODE OR LATEST ADOPTED EDITION  
TIA/EIA-222-H OR LATEST EDITION

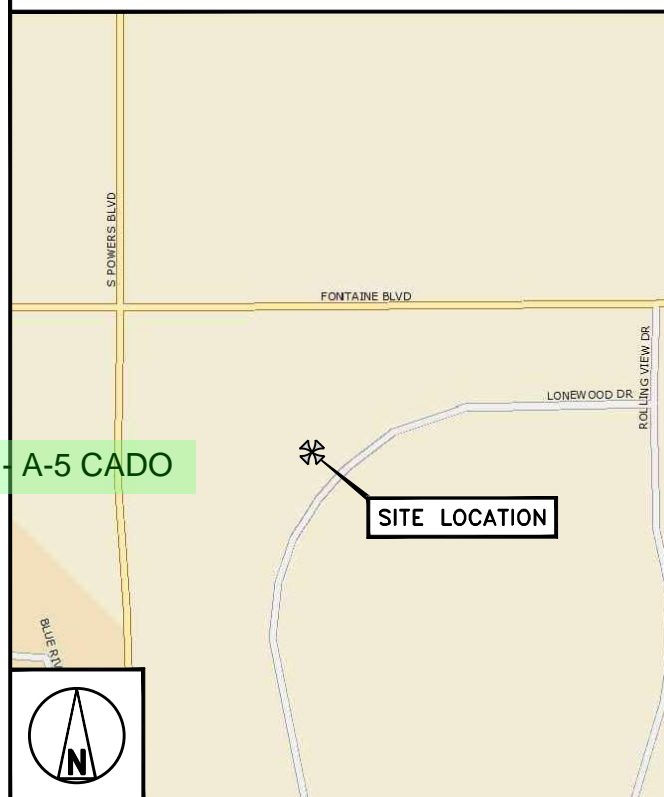
**GENERAL NOTES**

THE FACILITY IS UNMANNED AND NOT FOR HUMAN HABITATION. A TECHNICIAN WILL VISIT THE SITE AS REQUIRED FOR ROUTINE MAINTENANCE. THE PROJECT WILL NOT RESULT IN ANY SIGNIFICANT DISTURBANCE OR EFFECT ON DRAINAGE. NO SANITARY SEWER SERVICE, POTABLE WATER, OR TRASH DISPOSAL IS REQUIRED AND NO COMMERCIAL SIGNAGE IS PROPOSED.

**SITE INFORMATION**

PROPERTY OWNER: Pikes Peak Baptist Temple  
ADDRESS: 7925 FONTAINE BLVD COLORADO SPRINGS, CO 80901  
SITE ADDRESS: 7923 FONTAINE BLVD COLORADO SPRINGS, CO 80925  
FA: 10115180  
ROOFTOP OWNER: DIAMOND  
COUNTY: EL PASO  
LATITUDE (NAD83): 38° 44' 10.65" N  
LONGITUDE (NAD83): 104° 40' 48.65" W  
GROUND ELEVATION: 5,874' AMSL  
ZONING JURISDICTION: EL PASO COUNTY  
ZONING DISTRICT: PF incorrect - A-5 CADO  
PARCEL NUMBER: 5521002016  
OCCUPANCY GROUP: U  
CONSTRUCTION TYPE: V-B  
POWER COMPANY: COLORADO SPRINGS UTILITIES  
TELEPHONE COMPANY: N/A  
SITE ACQUISITION MANAGER: CORY HAMMEN (414) 455-2289  
CONSTRUCTION MANAGER: JOHN RUTKOWITZ (303) 264-0523  
RF ENGINEER: RON BLEDSOE (913) 458-8114

**VICINITY MAP**



**LOCAL MAP**



NO SCALE

**SHEET NO. SHEET TITLE DRAWING INDEX**

T-1	TITLE SHEET	
C-1	SITE PLAN	
C-1.1	ENLARGED SITE PLAN	
C-2	EQUIPMENT LAYOUTS	
C-3	ELEVATIONS	
C-4	ANTENNA LAYOUTS	
C-5	ANTENNA SCHEDULE	
C-6	EQUIPMENT DETAILS	
C-6.1	EQUIPMENT DETAILS	
E-1	ELECTRICAL AC ONE-LINE DIAGRAM	
E-2	ELECTRICAL DC ONE-LINE DIAGRAM	
G-1	GROUNDING ONE-LINE DIAGRAM	
G-2	GROUNDING DETAILS	
GN-1	LEGEND & ABBREVIATIONS	
GN-2	GENERAL CONSTRUCTION NOTES	
GN-3	GENERAL SITE WORK & DRAINAGE NOTES	
GN-4	GENERAL CONCRETE WORK NOTES	
GN-5	GENERAL STRUCTURAL STEEL NOTES	
GN-6	GENERAL ELECTRICAL NOTES	
GN-7	BATTERY SAFETY NOTES	

11"x17" PLOT WILL BE HALF SCALE UNLESS OTHERWISE NOTED

CONTRACTOR SHALL VERIFY ALL PLANS, EXISTING DIMENSIONS, AND CONDITIONS ON THE JOB SITE, AND SHALL IMMEDIATELY NOTIFY THE ENGINEER IN WRITING OF ANY DISCREPANCIES BEFORE PROCEEDING WITH THE WORK.



UNDERGROUND SERVICE ALERT  
UTILITY NOTIFICATION CENTER OF COLORADO  
(800) 922-1987  
WWW.UNCC.ORG

3 WORKING DAYS UTILITY NOTIFICATION PRIOR TO CONSTRUCTION

0	07/23/24	ISSUED FOR CONSTRUCTION
A	06/24/24	ISSUED FOR REVIEW
REV	DATE	DESCRIPTION



July 23, 2024  
IT IS A VIOLATION OF LAW FOR ANY PERSON, UNLESS THEY ARE ACTING UNDER THE DIRECTION OF A LICENSED PROFESSIONAL ENGINEER, TO ALTER THIS DOCUMENT.

**FONTAINE & POWERS**  
COLO2099  
7923 FONTAINE BLVD  
COLORADO SPRINGS, CO 80925  
NOKIA MARKETS MODERNIZATION

SHEET TITLE  
TITLE SHEET

SHEET NUMBER  
**T-1**

**CONTACT INFORMATION**

ENGINEER: BLACK & VEATCH CORPORATION  
4600 SOUTH SYRACUSE STREET, SUITE 800  
DENVER, CO 80237  
CONTACT: DAN GRUMAN  
PHONE: (913) 458-6112

**DRIVING DIRECTIONS**

**DIRECTIONS FROM COLORADO SPRINGS AIRPORT**

HEAD NORTH ON MILTON E PROBY PKWY. KEEP LEFT TO CONTINUE ON MILTON E PROBY PARKWAY AIRPORT EXIT. USE THE RIGHT LANE TO TURN SLIGHTLY LEFT ONTO MILTON E PROBY PKWY. TURN LEFT ONTO PEAK INNOVATION PKWY. AT THE ROUNDABOUT, TAKE THE 2ND EXIT AND STAY ON PEAK INNOVATION PKWY. TURN LEFT ONTO CO-21 S. SLIGHT LEFT TOWARD FONTAINE BLVD. TURN LEFT ONTO FONTAINE BLVD. TURN RIGHT. TURN RIGHT.

**NOTES**

1. PASSING STRUCTURAL ANALYSIS (CONFORMING TO TIA-222-H) FOR THE EXISTING ROOFTOP WAS COMPLETED BY ACCELERATED TOWER ENGINEERING ON 05/16/2024. ACCORDING TO THIS ANALYSIS, THE EXISTING ROOFTOP HAS SUFFICIENT CAPACITY TO SUPPORT THE LOADING INDICATED.
2. A PASSING ANTENNA MOUNT ANALYSIS (CONFORMING TO TIA-222-H) FOR THE EXISTING MOUNT WAS COMPLETED BY ATE ON 05/16/2024. ACCORDING TO THIS ANALYSIS, THE EXISTING MOUNT HAS SUFFICIENT CAPACITY TO SUPPORT THE LOADING INDICATED.

**COAX & CABLE INFORMATION**

- ALL EXISTING CABLES/COAX TO REMAIN UNLESS NOTED OTHERWISE
- (1) PROPOSED 24 PAIR FIBER TRUNK
- (1) PROPOSED 6AWG DC TRUNK
- (1) EXISTING 18 PAIR FIBER TRUNK
- (4) EXISTING 8AWG DC TRUNKS
- (12) EXISTING 7/8" COAX CABLES



188 INVERNESS DRIVE WEST  
SUITE 400  
ENGLEWOOD, CO 80112



**BLACK & VEATCH**  
4600 SOUTH SYRACUSE STREET  
SUITE 800  
DENVER, COLORADO 80237



TOWER ENGINEERING PROFESSIONALS  
326 TRYON RD. RALEIGH, NC  
27603 OFFICE: (919) 661-6351

PROJECT#: 314248

DRAWN BY: KRS

CHECKED BY: KOO

RFDS: N/A

REV	DATE	DESCRIPTION
0	07/23/24	ISSUED FOR CONSTRUCTION
A	06/24/24	ISSUED FOR REVIEW



July 23, 2024

IT IS A VIOLATION OF LAW FOR ANY PERSON, UNLESS THEY ARE ACTING UNDER THE DIRECTION OF A LICENSED PROFESSIONAL ENGINEER, TO ALTER THIS DOCUMENT.

FONTAINE & POWERS  
COLO2099  
7923 FONTAINE BLVD  
COLORADO SPRINGS, CO 80925  
NOKIA MARKETS MODERNIZATION

SHEET TITLE  
FINAL ELEVATIONS

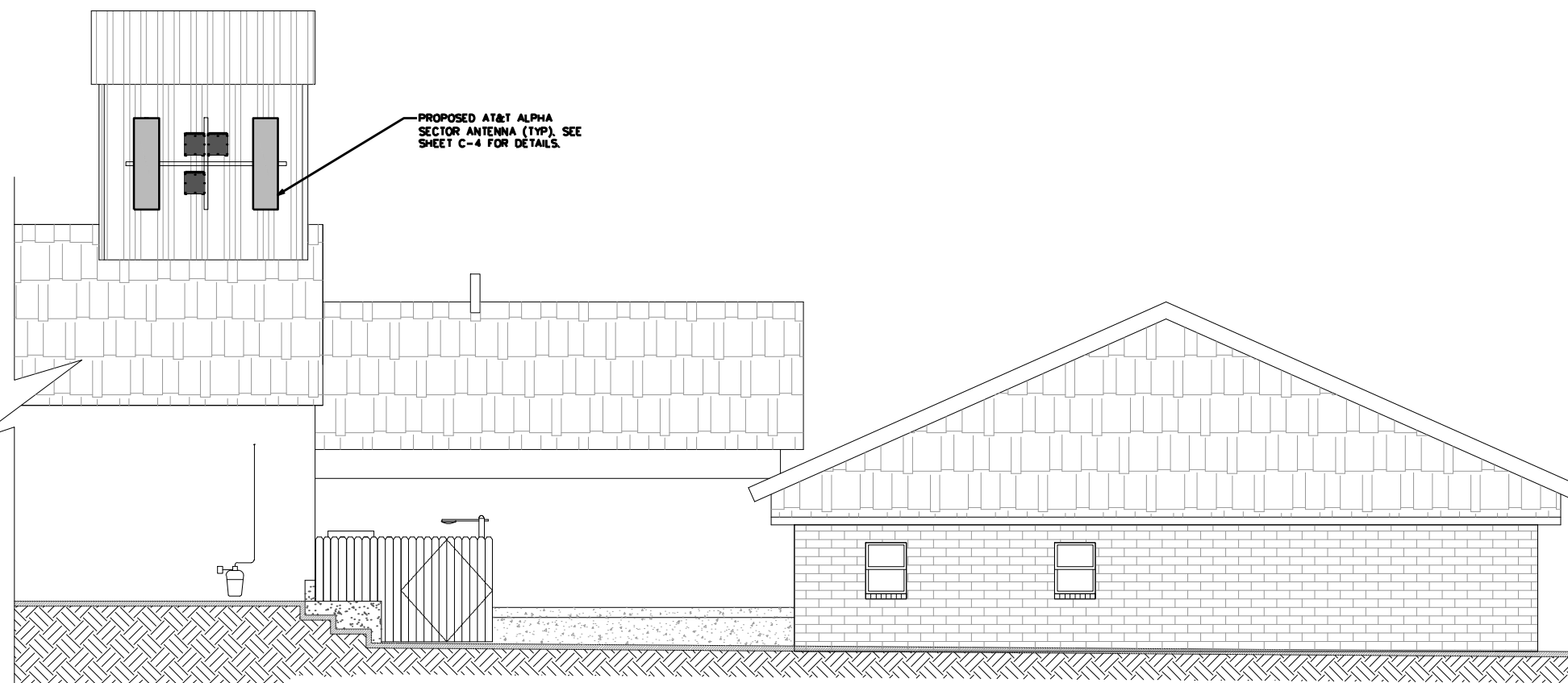
SHEET NUMBER

**C-3**

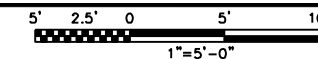
43'-0"±  
T/BUILDING

36'-0"±  
TIP/AT&T ANTENNAS

0'-0"±  
T/CONCRETE



FINAL NORTH ELEVATION



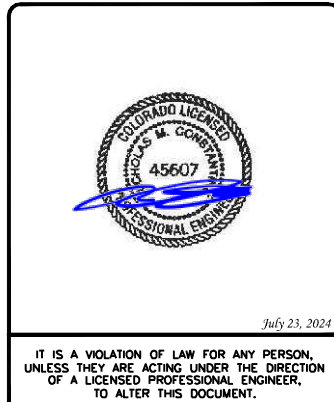


188 INVERNESS DRIVE WEST  
SUITE 400  
ENGLEWOOD, CO 80112



PROJECT#: 314248  
DRAWN BY: KRS  
CHECKED BY: KOO  
RFDS: N/A

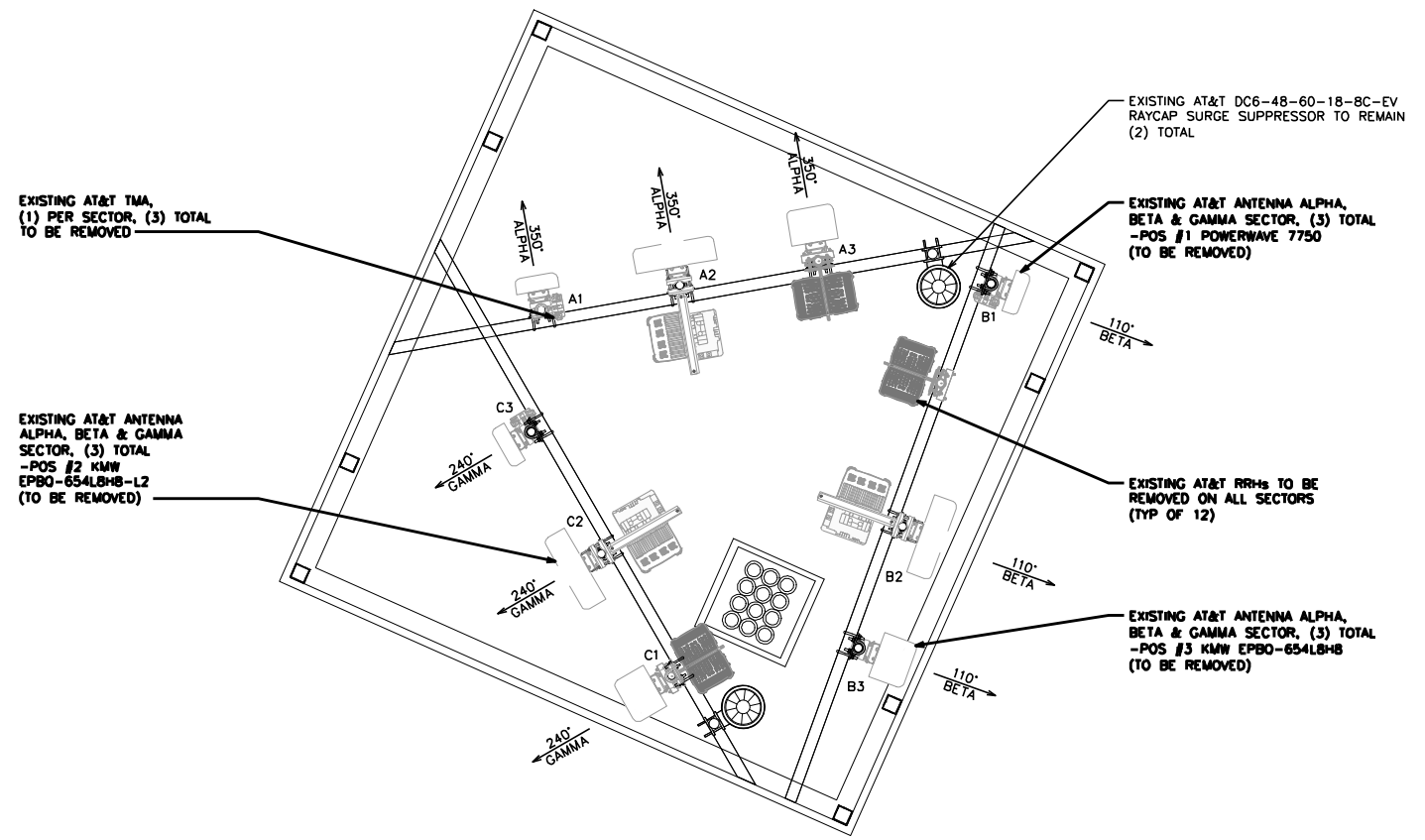
REV	DATE	DESCRIPTION
0	07/23/24	ISSUED FOR CONSTRUCTION
A	06/24/24	ISSUED FOR REVIEW



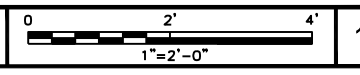
FONTAINE & POWERS  
COLO2099  
7923 FONTAINE BLVD  
COLORADO SPRINGS, CO 80925  
NOKIA MARKETS MODERNIZATION

SHEET TITLE  
ELEVATIONS

SHEET NUMBER  
**C-4**

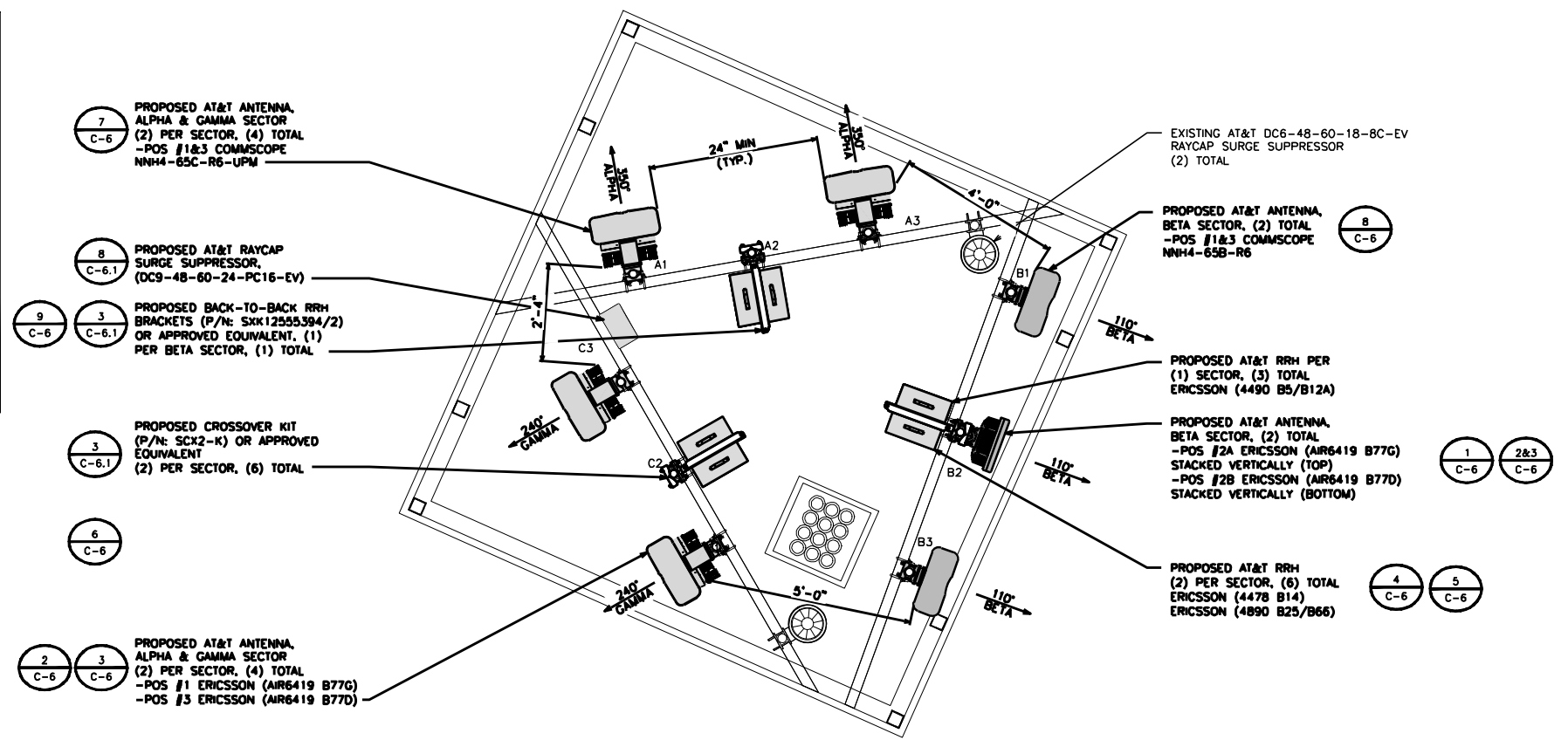


EXISTING ANTENNA LAYOUT



NOTE

- PASSING STRUCTURAL ANALYSIS (CONFORMING TO TIA-222-H) FOR THE EXISTING ROOFTOP WAS COMPLETED BY ACCELERATED TOWER ENGINEERING ON 05/16/2024. ACCORDING TO THIS ANALYSIS, THE EXISTING ROOFTOP HAS SUFFICIENT CAPACITY TO SUPPORT THE LOADING INDICATED.
- A PASSING ANTENNA MOUNT ANALYSIS (CONFORMING TO TIA-222-H) FOR THE EXISTING MOUNT WAS COMPLETED BY ATE ON 05/16/2024. ACCORDING TO THIS ANALYSIS, THE EXISTING MOUNT HAS SUFFICIENT CAPACITY TO SUPPORT THE LOADING INDICATED.
- CONTRACTOR TO REWORK EXISTING MOUNTS TO EVENLY SPACE 3 MOUNT PIPES AS FAR AS POSSIBLE. FIELD FABRICATE MOUNT HOLES FOR ANTENNA PIPE POSITIONS AS NEEDED.
- ANTENNA PIPE MOUNTS TO BE EVENLY SPACED (PER SECTOR). ENSURE 24" MIN SPACING IS MAINTAINED BETWEEN ANTENNAS.



PROPOSED ANTENNA LAYOUT

