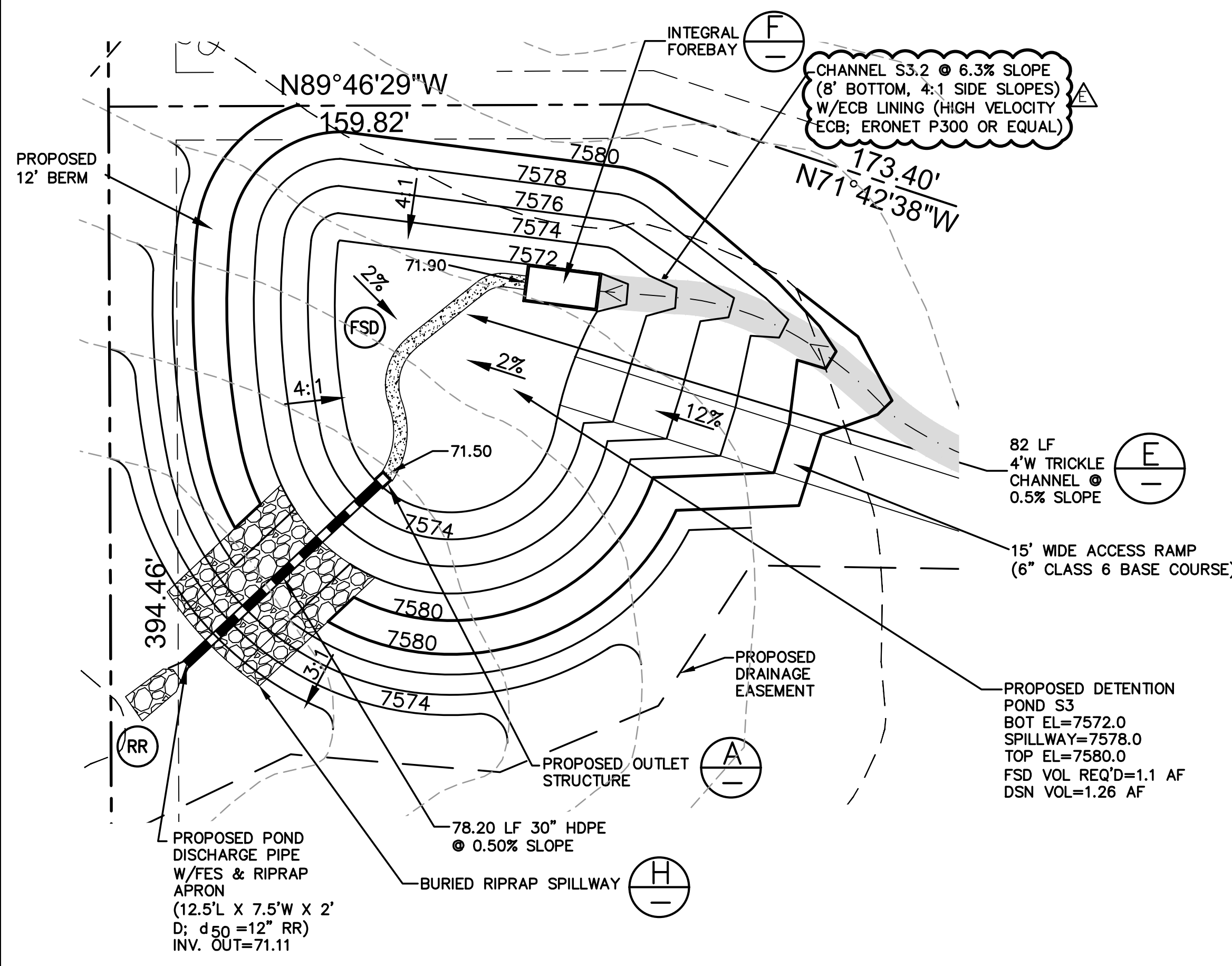
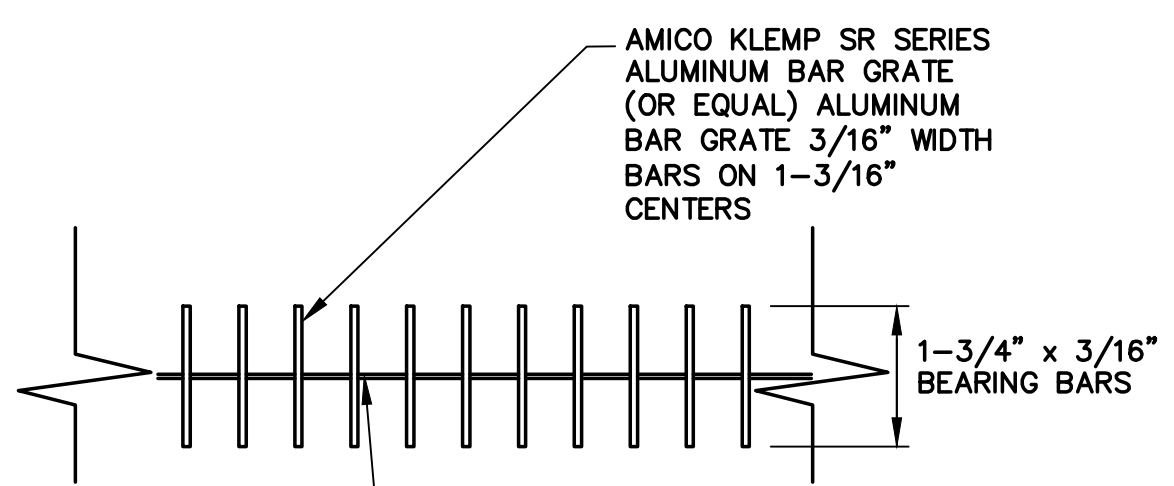


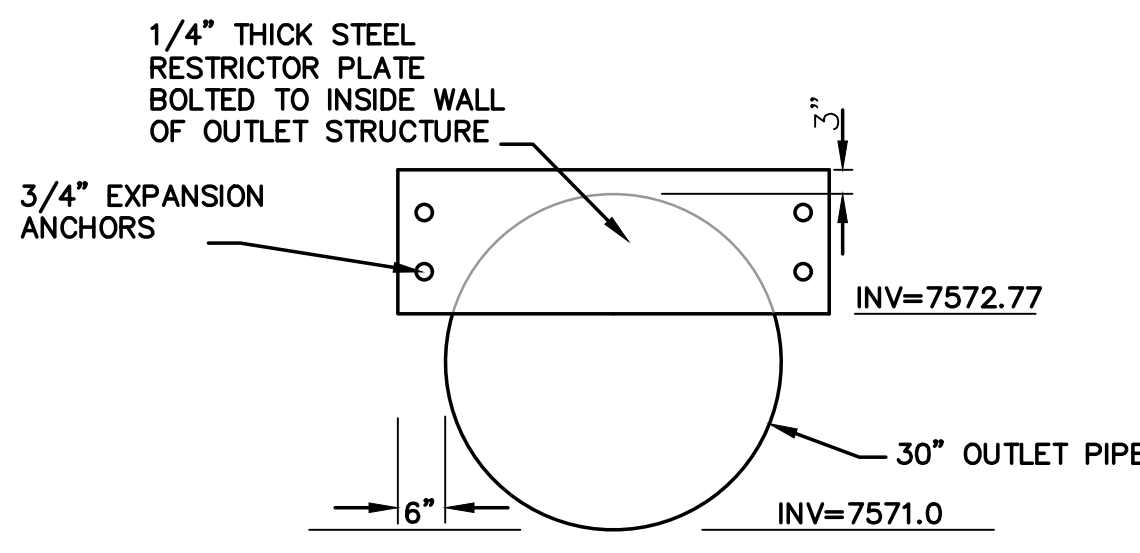
C:\Users\Owner\Desktop\p3proj\111603\settlers-view.dwg Civil 3D Apr. 29, 2020 - 11:48am



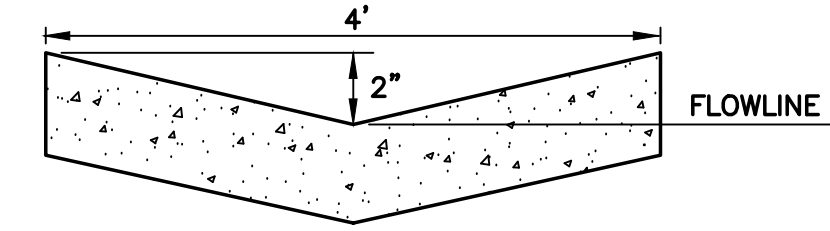
DETENTION POND S3 PLAN  
SCALE: 1" = 30"



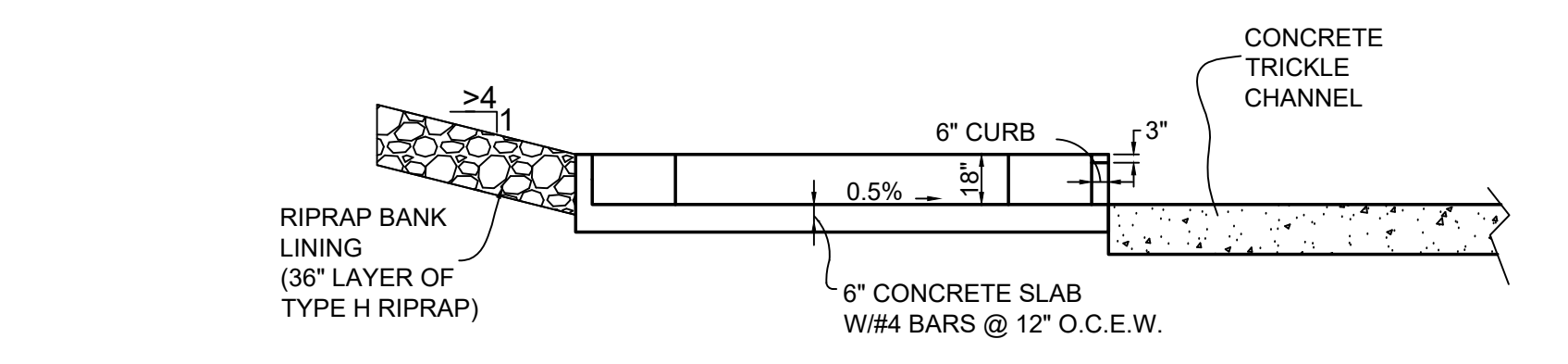
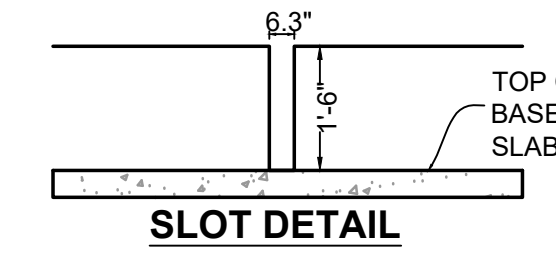
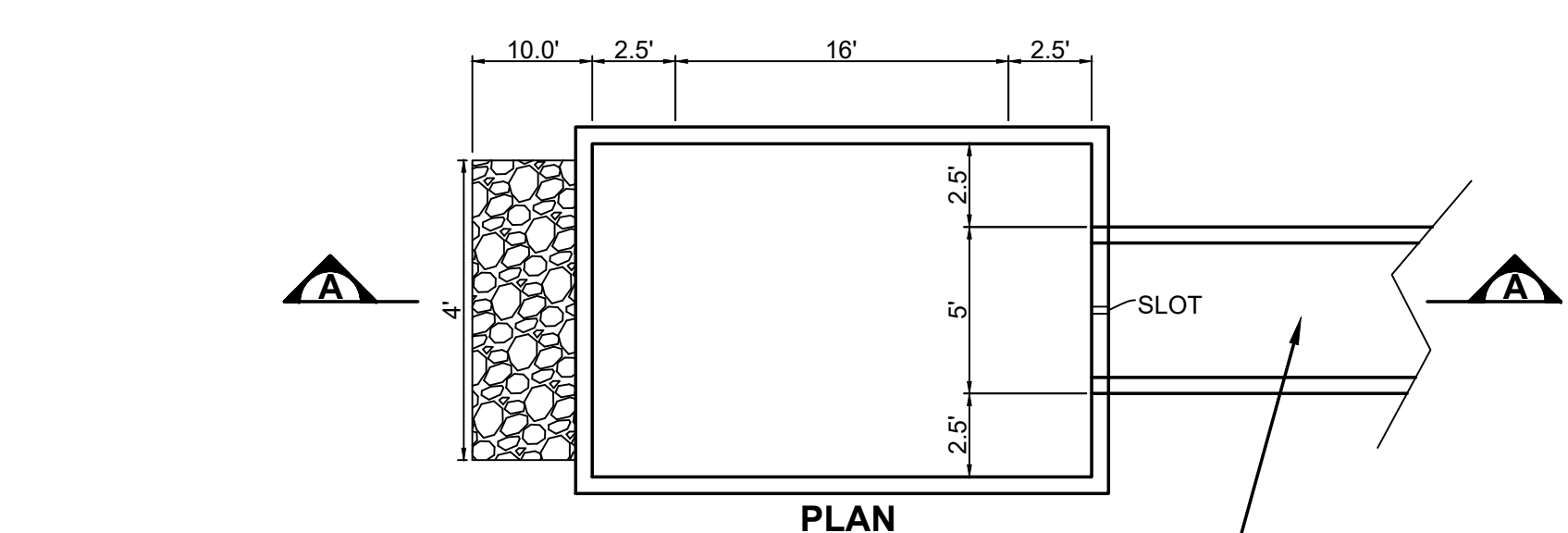
TRASH GRATE SECTION  
NTS



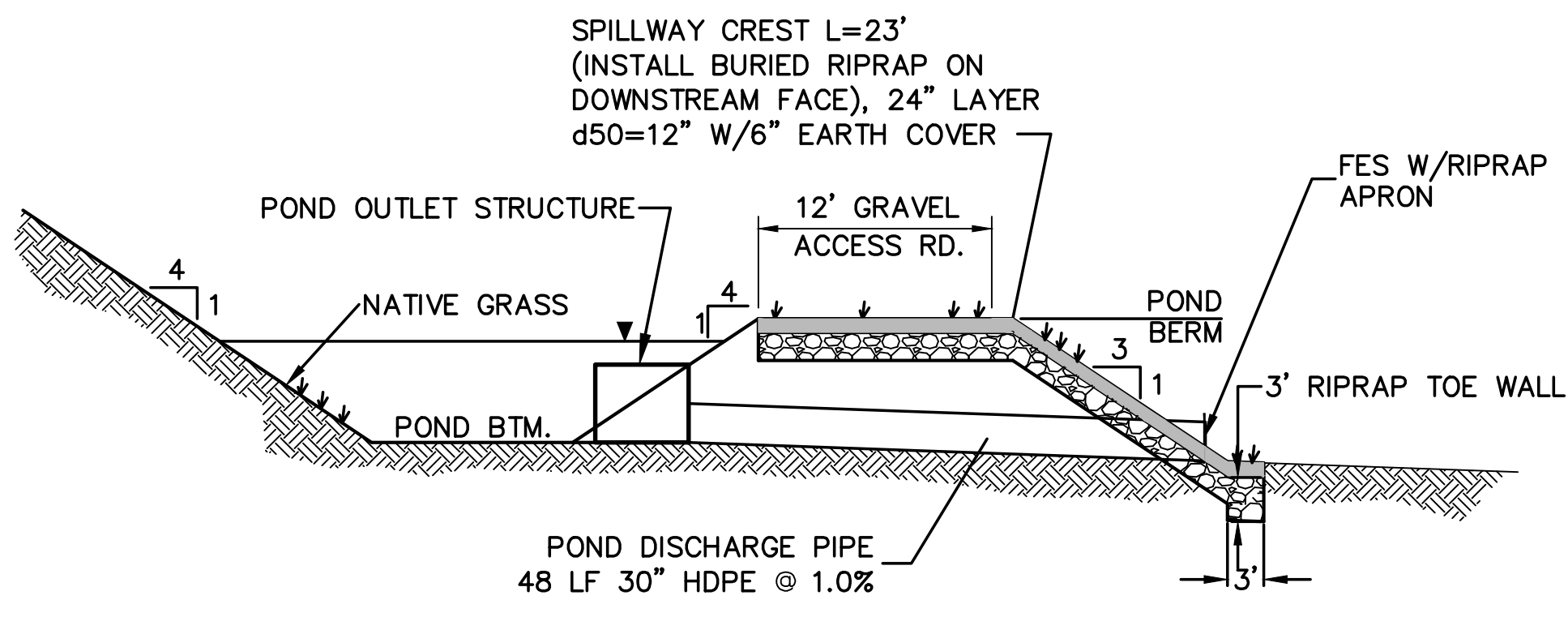
RESTRICTOR PLATE DETAIL  
NTS



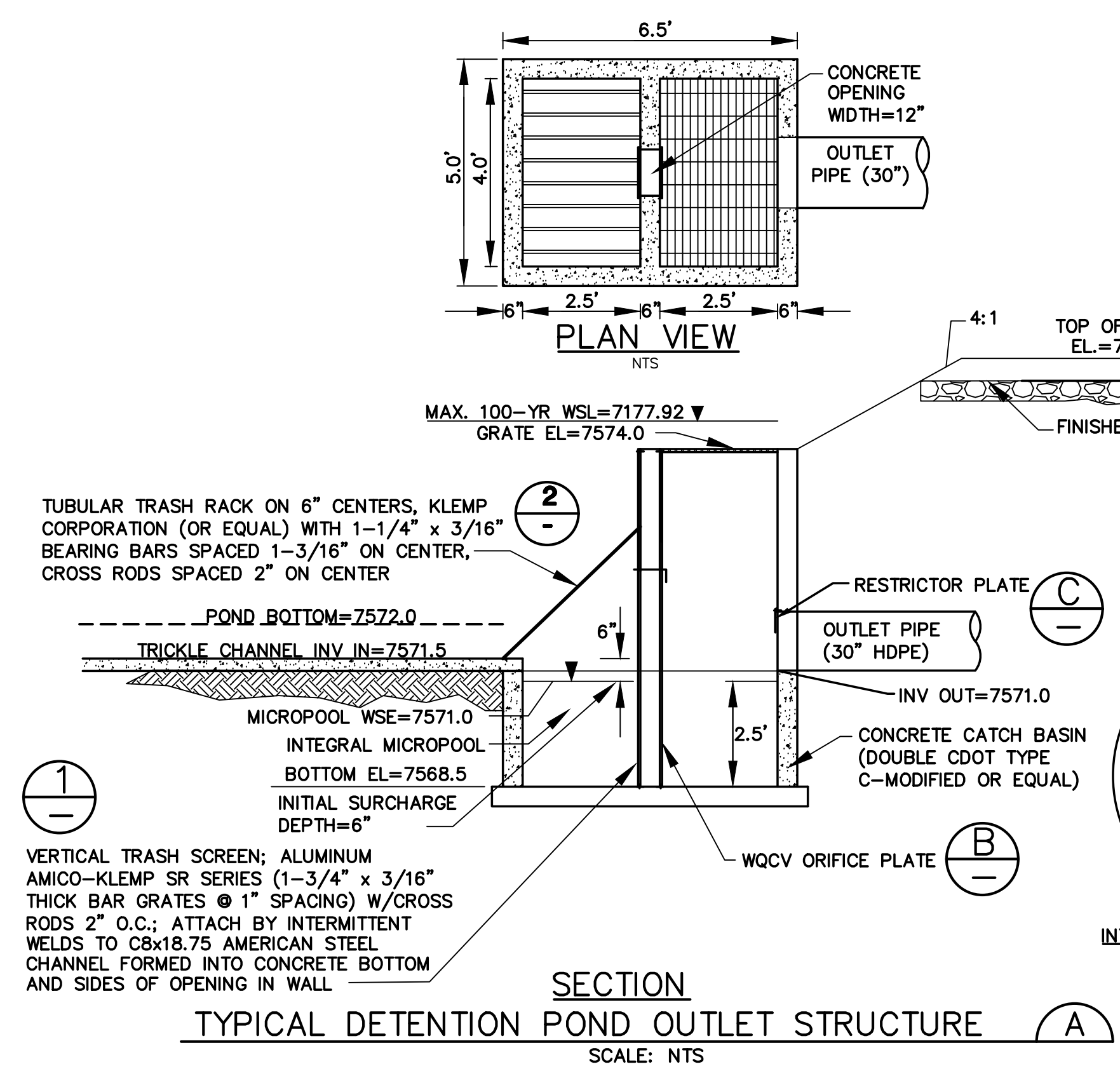
TYPICAL CONCRETE TRICKLE CHANNEL  
E



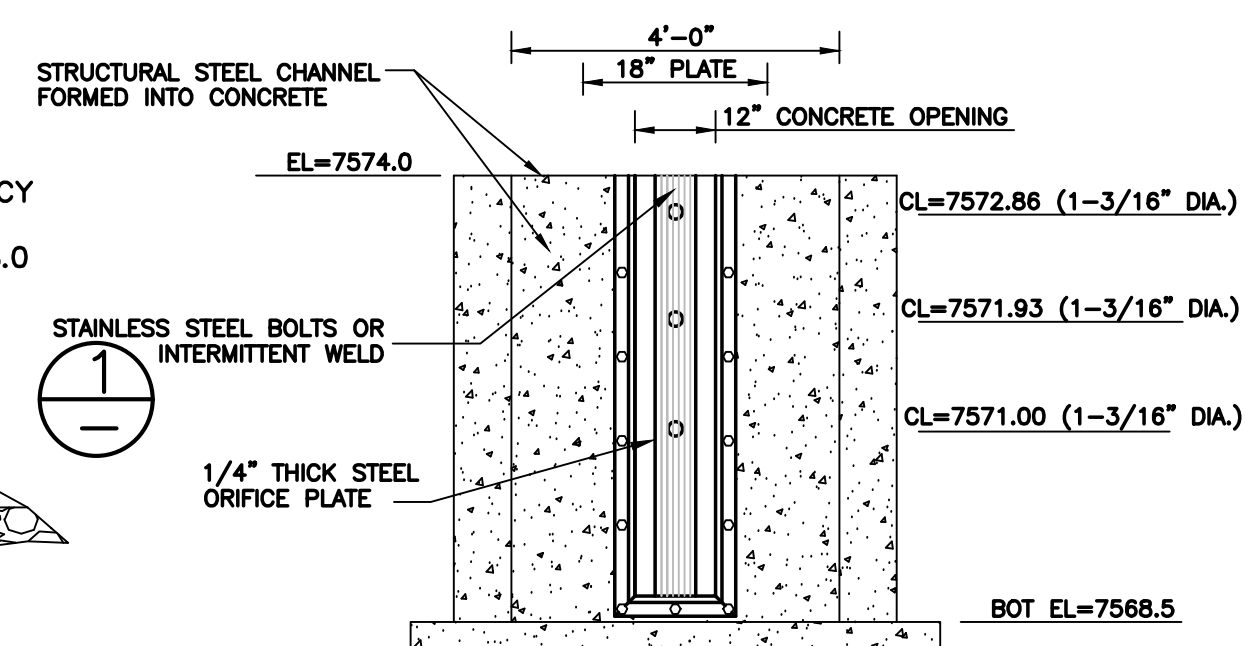
INTEGRAL FOREBAY DETAIL  
SCALE: NTS



TYPICAL SECTION DETENTION POND S3  
SCALE: NTS

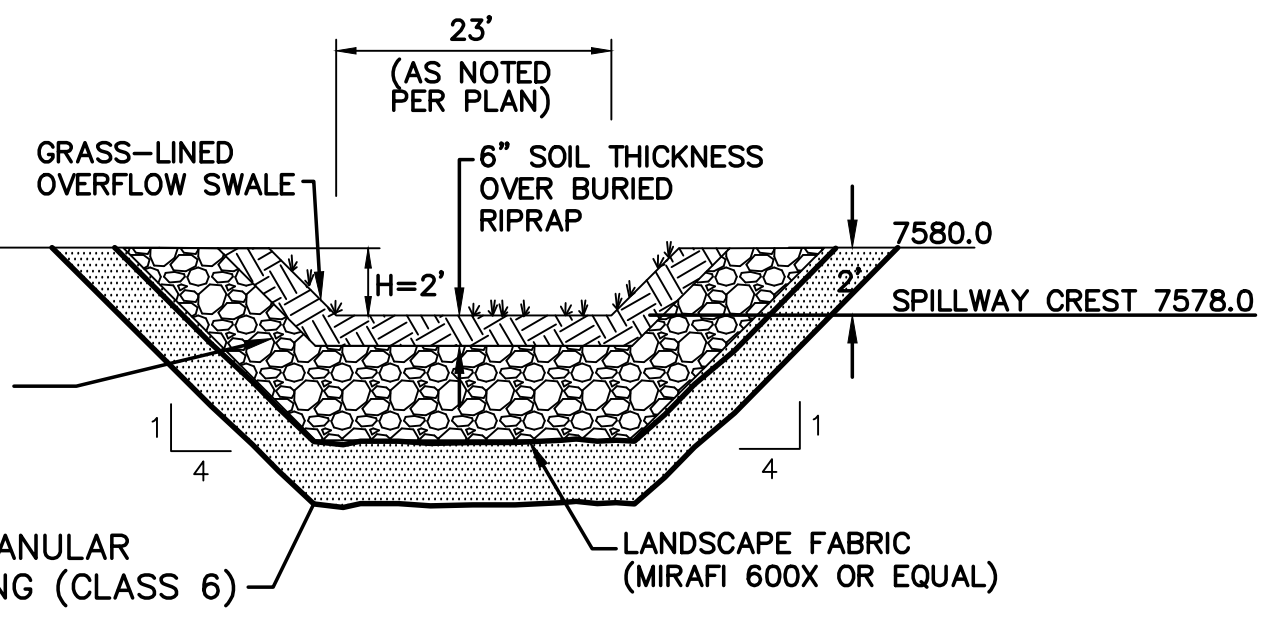


TYPICAL DETENTION POND OUTLET STRUCTURE  
SCALE: NTS



ORIFICE PLATE AND TRASH RACK  
DETAILS AND NOTES  
NTS

- ORIFICE PLATE NOTES:**
1. MINIMIZE THE NUMBER OF COLUMNS.
  2. PROVIDE GASKET MATERIAL BETWEEN THE ORIFICE PLATE AND CONCRETE.
  3. BOLT PLATE TO CONCRETE 12" MAX. ON CENTER.
- EURY AND WQCV TRASH RACKS:**
1. WELL-SCREEN TRASH RACKS (FOR CIRCULAR ORIFICES) SHALL BE STAINLESS STEEL AND SHALL BE ATTACHED BY INTERMITTENT WELDS ALONG THE MOUNTING FRAME.
  2. STRUCTURAL DESIGN OF TRASH RACKS SHALL BE BASED ON FULL HYDROSTATIC HEAD WITH ZERO HEAD DOWNSTREAM OF THE RACK.
- OVERFLOW TRASH RACKS:**
1. ALL TRASH RACKS SHALL BE MOUNTED USING STAINLESS STEEL HARDWARE AND PROVIDED WITH HINGED AND LOCKABLE OR BOLTABLE ACCESS PANELS.
  2. TRASH RACKS SHALL BE STAINLESS STEEL, ALUMINUM, OR STEEL. STEEL TRASH RACKS SHALL BE HOT DIP GALVANIZED AND MAY BE HOT POWDER COATED AFTER GALVANIZING.
  3. TRASH RACKS SHALL BE DESIGNED SUCH THAT THE DIAGONAL DIMENSION OF EACH OPENING IS SMALLER THAN THE DIAMETER OF THE OUTLET PIPE.
  4. STRUCTURAL DESIGN OF TRASH RACKS SHALL BE BASED ON FULL HYDROSTATIC HEAD WITH ZERO HEAD DOWNSTREAM OF THE RACK.



PROPOSED SPILLWAY DETAIL  
SCALE: NTS

- RIPRAP NOTES:**
1. RIPRAP SHALL HAVE A MINIMUM SPECIFIC GRAVITY OF 2.6.
  2. RIPRAP GRADATION SHALL CONFORM TO TABLE 10-7 AND 10-8 OF THE EPC DRAINAGE CRITERIA MANUAL.
  3. CONTRACTOR SHALL SUBMIT RIPRAP GRADATION TO ENGINEER FOR APPROVAL PRIOR TO DELIVERY.

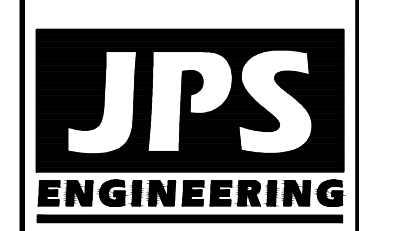
SETTLERS VIEW SUBDIVISION

DETENTION POND  
DETAILS

HORZ. SCALE:	N/A	DRAWN:	MSP
VERT. SCALE:	N/A	DESIGNED:	JPS
SURVEYED:	HANNIGAN	CHECKED:	JPS
CREATED:	7/27/18	LAST MODIFIED:	4/29/20
PROJECT NO.:	111603	MODIFIED BY:	BJJ
SHEET:			

C3

PCD File No. SF-18-041



19 E. Willamette Ave.  
Colorado Springs, CO  
80903  
PH: 719-477-9429  
FAX: 719-471-0766  
www.jpsegr.com



CALL UTILITY NOTIFICATION  
CENTER OF COLORADO  
1-800-922-1987  
CALL OR VISIT US IN ADVANCE  
BEFORE YOU DIG, GRADE, OR EXCAVATE  
FOR THE MARKING OF UNDERGROUND  
MEMBER UTILITIES.

NO.	REVISION	DATE	BY
1	COUNTY COMMENTS	2/13/18	JPS
2	FINAL PLAT SUBMITTAL	7/31/18	JPS
3	COUNTY COMMENTS	1/30/19	JPS
4	COUNTY COMMENTS	3/05/19	JPS
5	CHANNEL S3.2 EGB	4/29/20	JPS