

BOCC

Chuck Broerman
01/19/2021 01:39:32 PM
Doc \$0.00
Rec \$0.00

El Paso County, CO



4
Pages 221010081

RESOLUTION NO. 21-15

BOARD OF COUNTY COMMISSIONERS
COUNTY OF EL PASO, STATE OF COLORADO

RESOLUTION TO APPROVE APPLICATION FOR PRELIMINARY ACCEPTANCE OF CERTAIN STREETS WITHIN SETTLERS VIEW SUBDIVISION INTO THE EL PASO COUNTY ROAD MAINTENANCE SYSTEM.

WHEREAS, the Board of County Commissioners of El Paso County, Colorado, has received an application for final acceptance of certain streets located within the unincorporated area of El Paso County, more particularly described herein, for addition and maintenance into the El Paso County Highway System; and

WHEREAS, the same have been inspected by El Paso County, and the investigations reveal the County should accept and maintain such streets;

NOW, THEREFORE, BE IT RESOLVED the Board of County Commissioners of El Paso County, Colorado, hereby approves the preliminary acceptance for maintenance of streets within the unincorporated area of El Paso County as described in Exhibit A, which is attached hereto and incorporated by reference, effective as of this date.

DONE THIS 19th day of JANUARY, 2021, at Colorado Springs, Colorado.

BOARD OF COUNTY COMMISSIONERS
OF EL PASO COUNTY, COLORADO

ATTEST:



By: Stan VanderWeef
CHAIR

EL PASO COUNTY



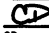
APPLICATION FOR PRELIMINARY ACCEPTANCE INTO THE EL PASO COUNTY MAINTENANCE SYSTEM

SUBDIVISION SETTLERS VIEW SUBDIVISION R - T - S PLAT 14379
 APPLICANT GARY BRINKMAN 66-11-23 DATE PLAT RECORDED 4/9/2019
 FILE REFERENCE SF-18-041 BOCC HEARING 01/19/2021

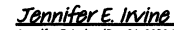

NOTES

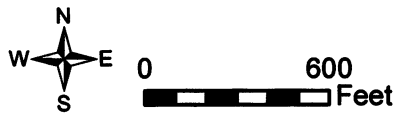
ROAD NO.	ROAD NAME	FROM	TO	LENGTH FT/MI	ROW WIDTH	SURFACE TYPE	SURF WDTH	F/F CG	CURB TYPE
4120	SILVER NELL DR	END	ELK BASIN CT	640'/0.12 mi	60'	3" HMA/6" ABC	28'	N/A'	N/A
4120	SILVER NELL DR	ELK BASIN CT	TEMP CDS	259'/0.05 mi	60'	3" HMA/6" ABC	28'	N/A'	N/A
4531	ELK BASIN CT	CDS	SILVER NELL DR	881'/0.17 mi	60'	3" HMA/6" ABC	28'	N/A'	N/A
TOTAL LENGTH ACCEPTED				1780'/0.34 mi					

APPROVALS

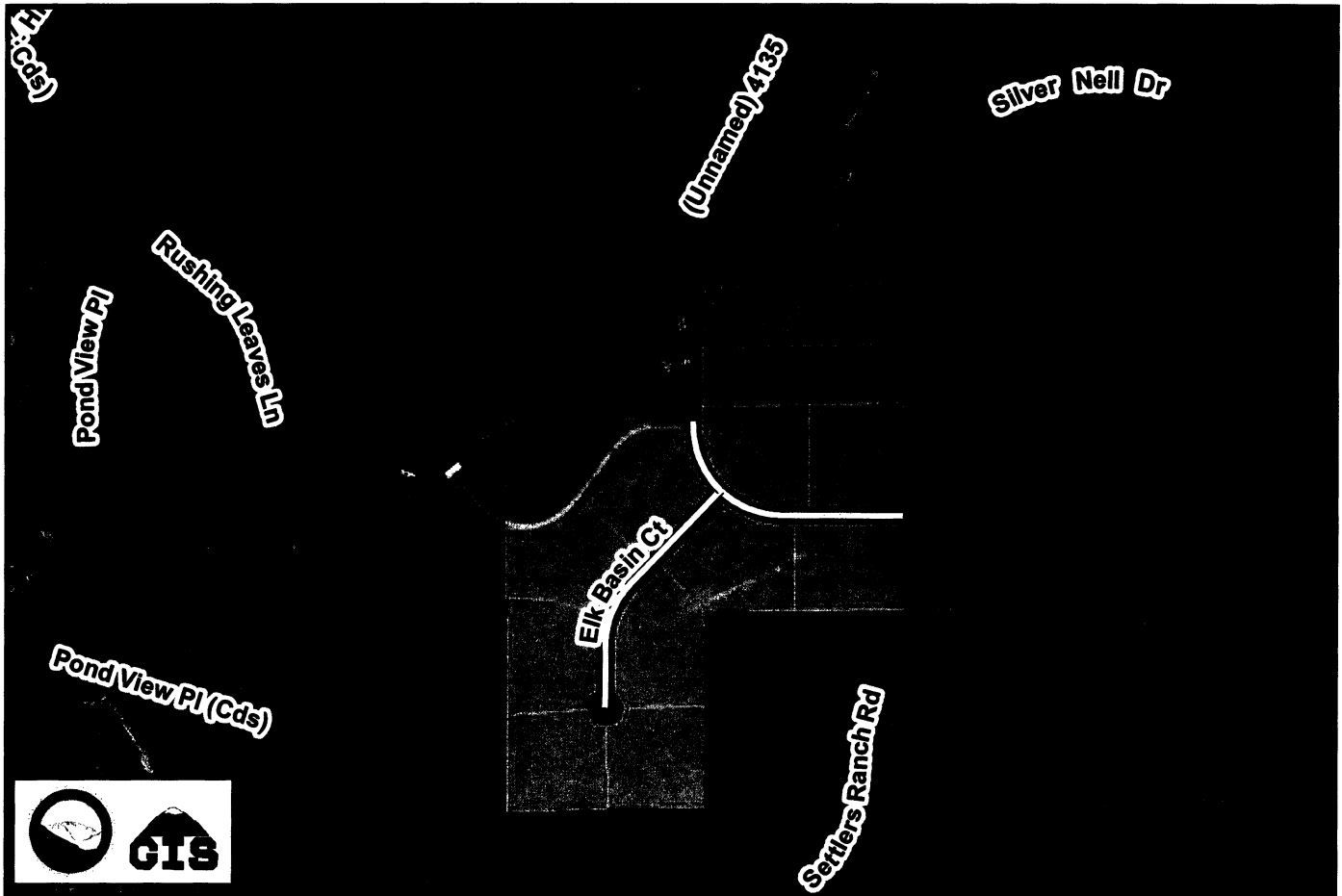

BK ROADS DATABASE TECHNICIAN

BW INSPECTION SUPERVISOR (DSD)

CD DEVELOPMENT SERVICES DIR

ACCEPTANCE RECOMMENDED


Jennifer E. Irvine (Dec 21, 2020 16:33 MST)
 COUNTY ENGINEER

Scot Cuthbertson (Dec 18, 2020 15:22 MST)
 PUBLIC WORKS DIR



**Settlers View Subdivision
Preliminary Acceptance, Plat 14379**



Silver Nell Dr
From End
(W) Westerly
to Elk Basin Ct
Approx. Length: 640' - 0.12 mi

Silver Nell Dr
From Elk Basin Ct
(N) Northerly
to Temp Cds
Approx. Length: 259' - 0.05 mi

Elk Basin Ct
From Cds
(NE) Northeasterly
to Silver Nell Dr
Approx. Length: 881' - 0.17 mi

Legend

- Roads Accepted for Maint.
- Paved and Maintained
- Gravel and Maintained
- Not Accepted for Maintenance
- Private Roads - Private Maintenance
- Other Government Maintenance
- Future Roads and Proposed Roads
- Settlers View Subdivision
- Parcels

Signature: Brad Walters
Brad Walters (Jan 5, 2021 07:10 MST)

Email: bradwalters@elpasoco.com

Signature: Brian Kay
Brian Kay (Dec 16, 2020 06:09 MST)

Email: briankay@elpasoco.com

Signature: C. D.
Craig Dossey (Dec 18, 2020 11:08 MST)

Email: craigdossey@elpasoco.com