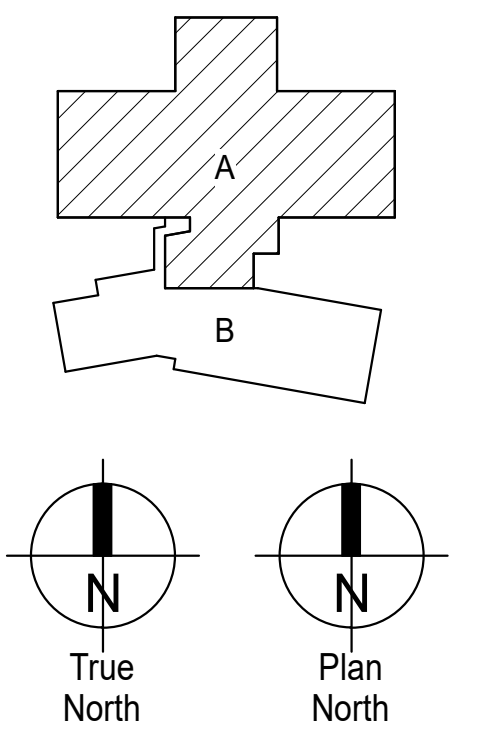


**Construction Documents**

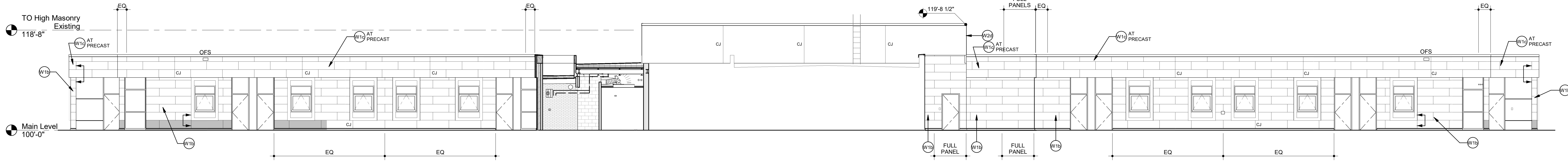
Drawn: \_\_\_\_\_ TAH  
Checked: \_\_\_\_\_ JMS  
Issued: \_\_\_\_\_ 11 January 2022  
Revised: \_\_\_\_\_

**Area Key Plan**



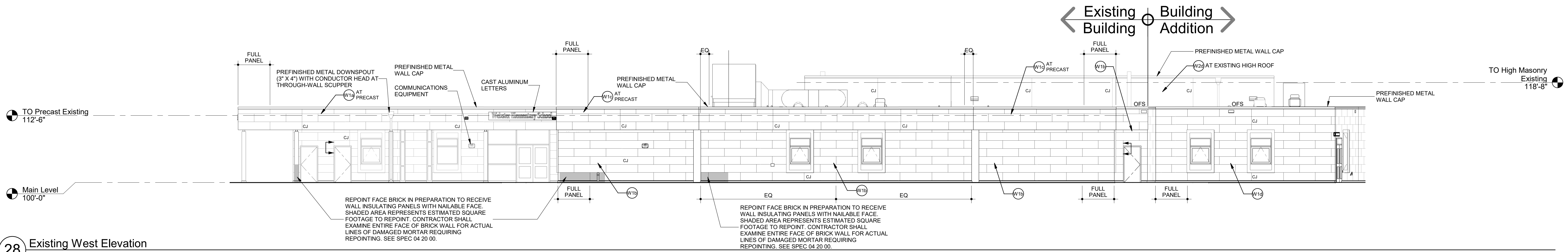
**EXISTING BUILDING  
EXTERIOR ELEVATIONS**

**A5.1**  
Project No. 21-003  
The LKA Partners Incorporated



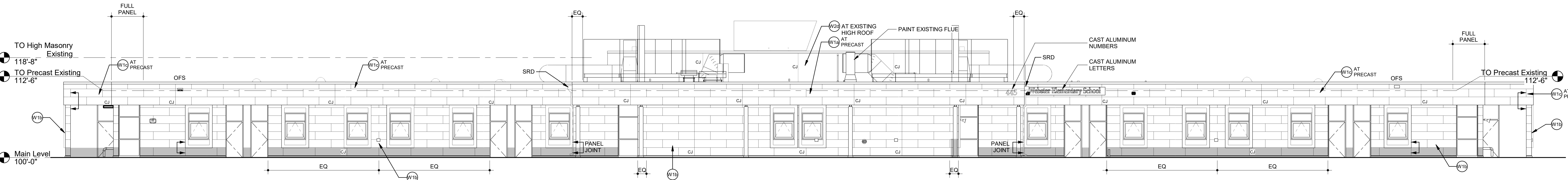
**29 Existing South Elevation**

Scale: 1/8" = 1'-0"



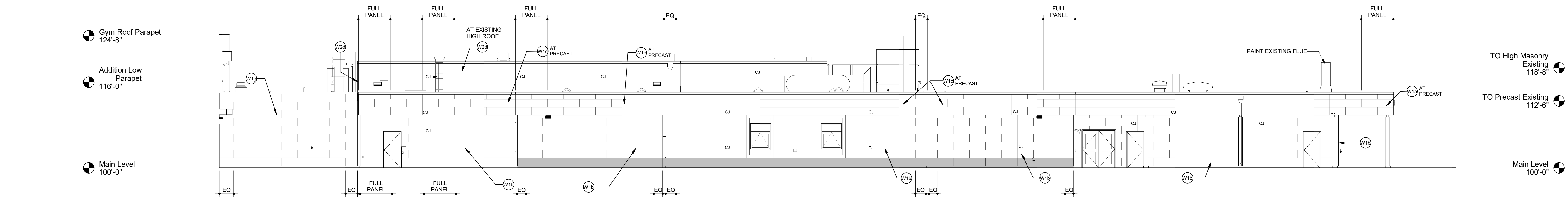
**28 Existing West Elevation**

Scale: 1/8" = 1'-0"



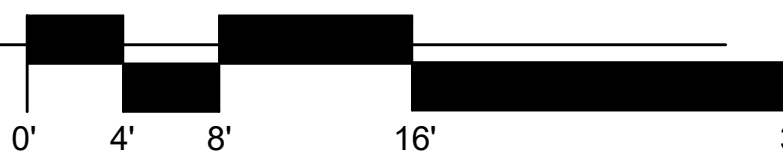
**27 Existing North Elevation**

Scale: 1/8" = 1'-0"

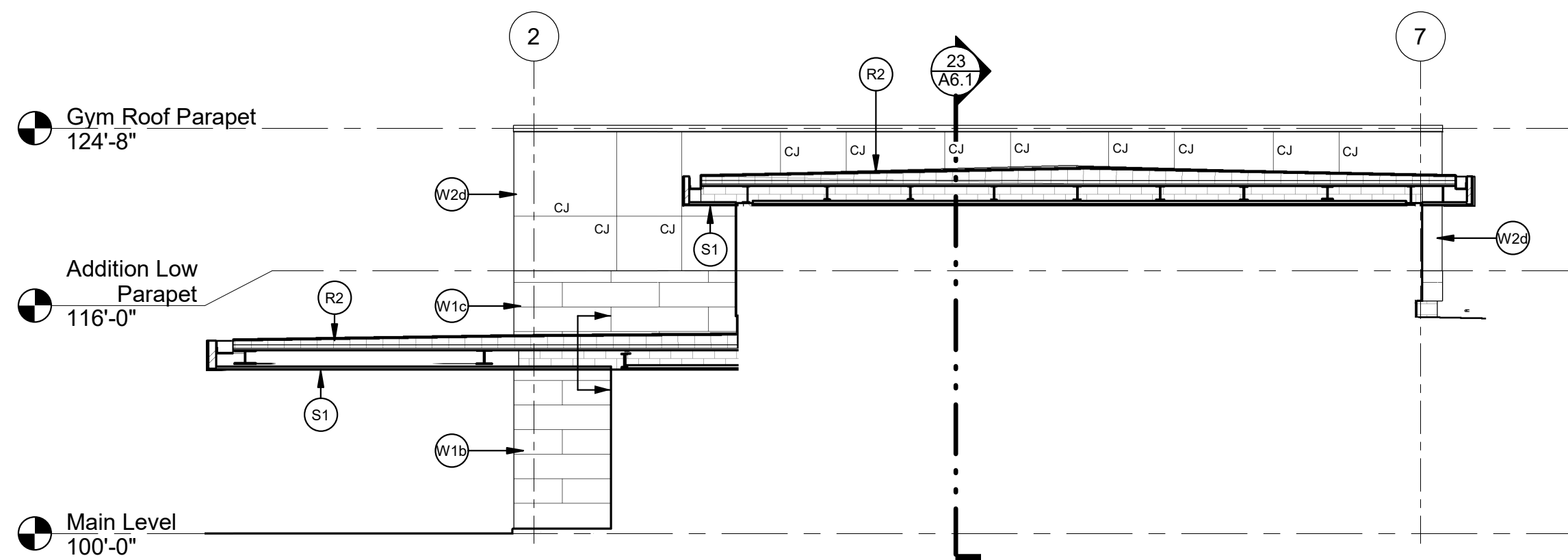


**26 Existing East Elevation**

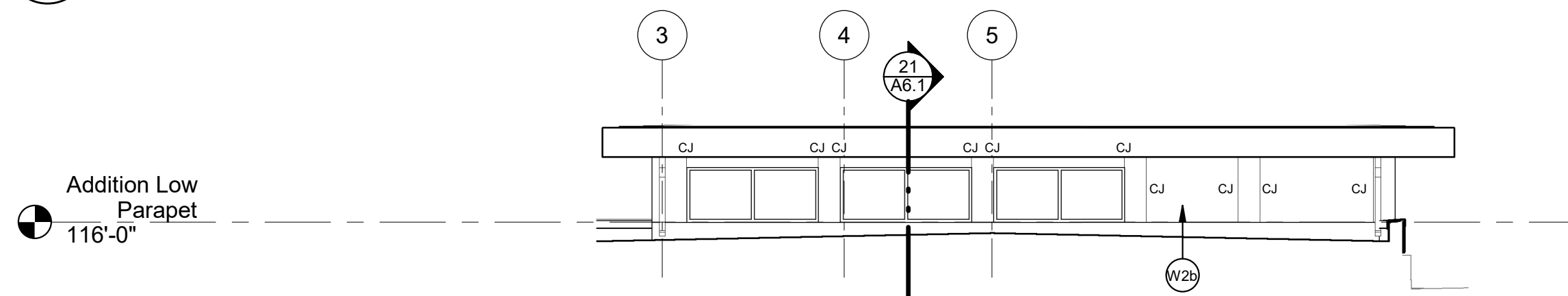
Scale: 1/8" = 1'-0"



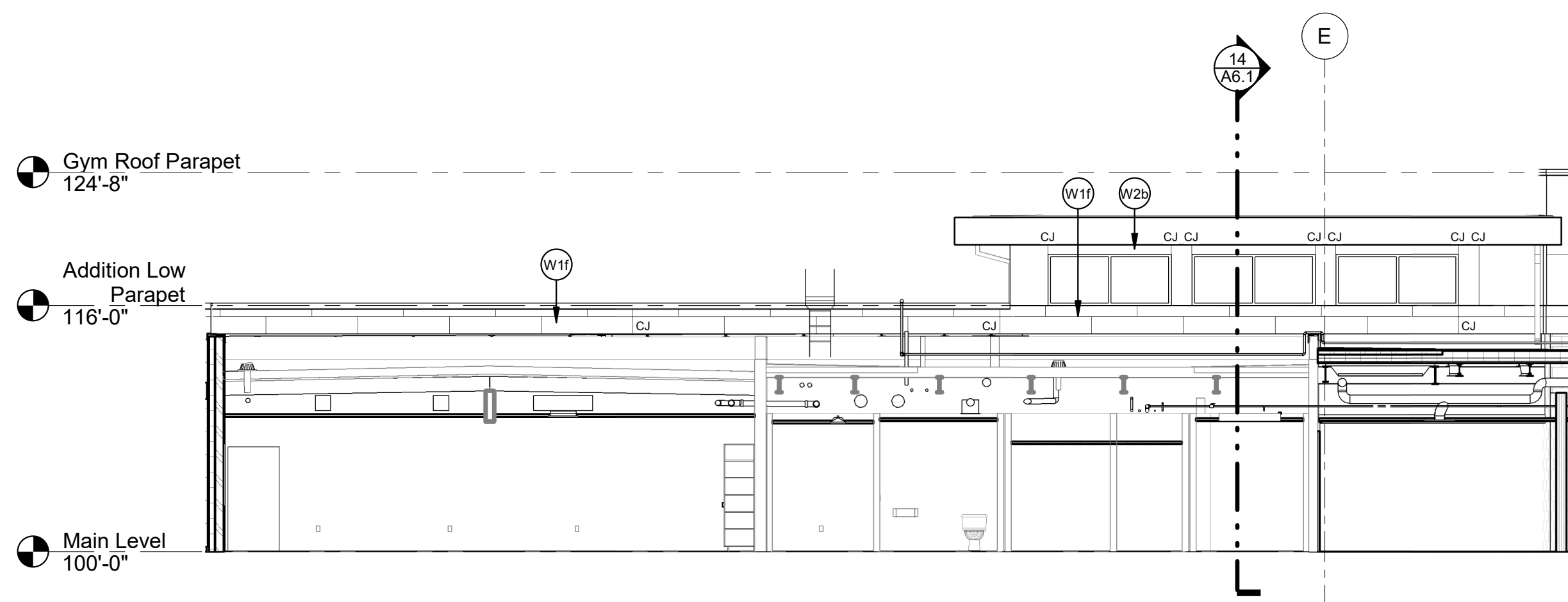




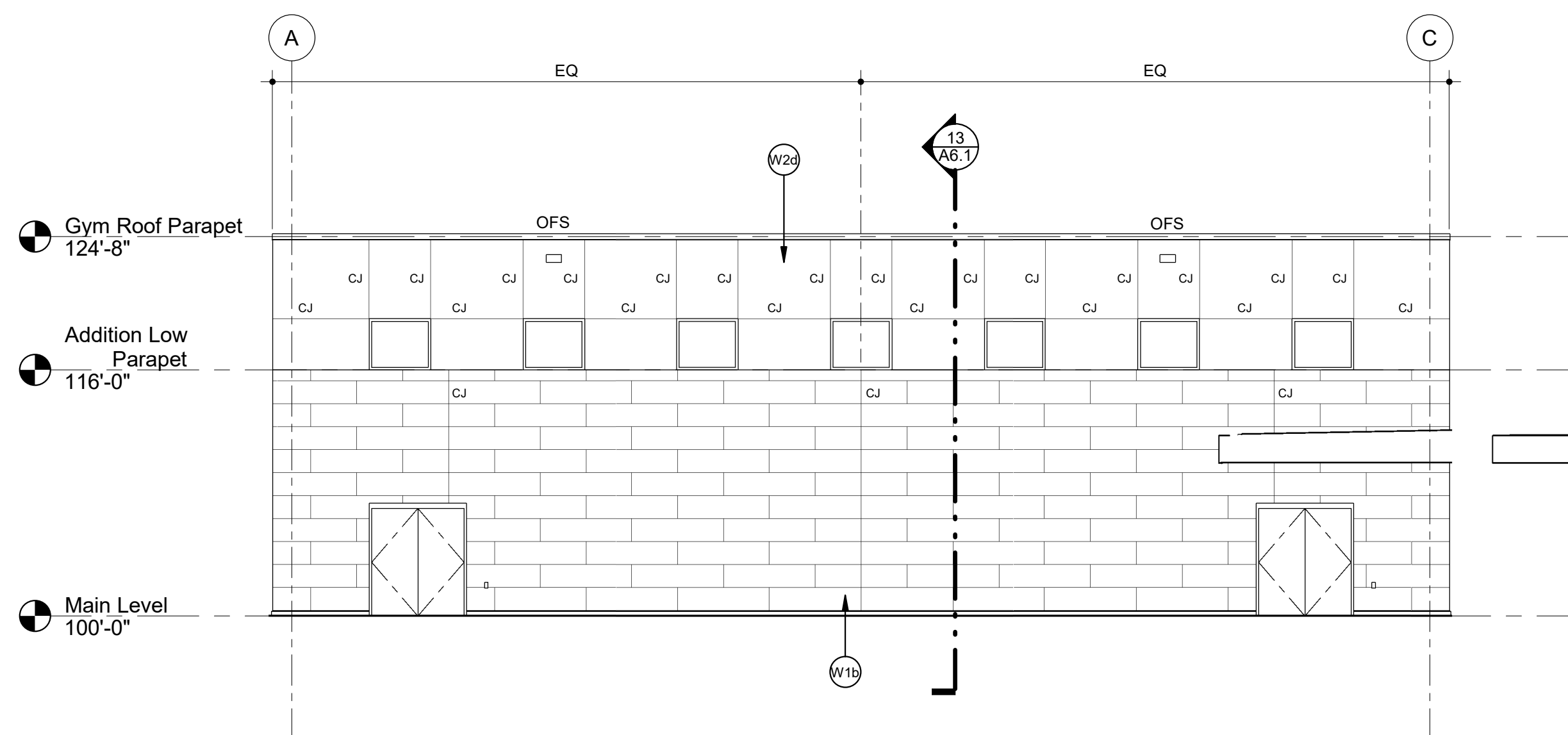
30 Addition Gym East Elevation  
Scale: 1/8" = 1'-0"



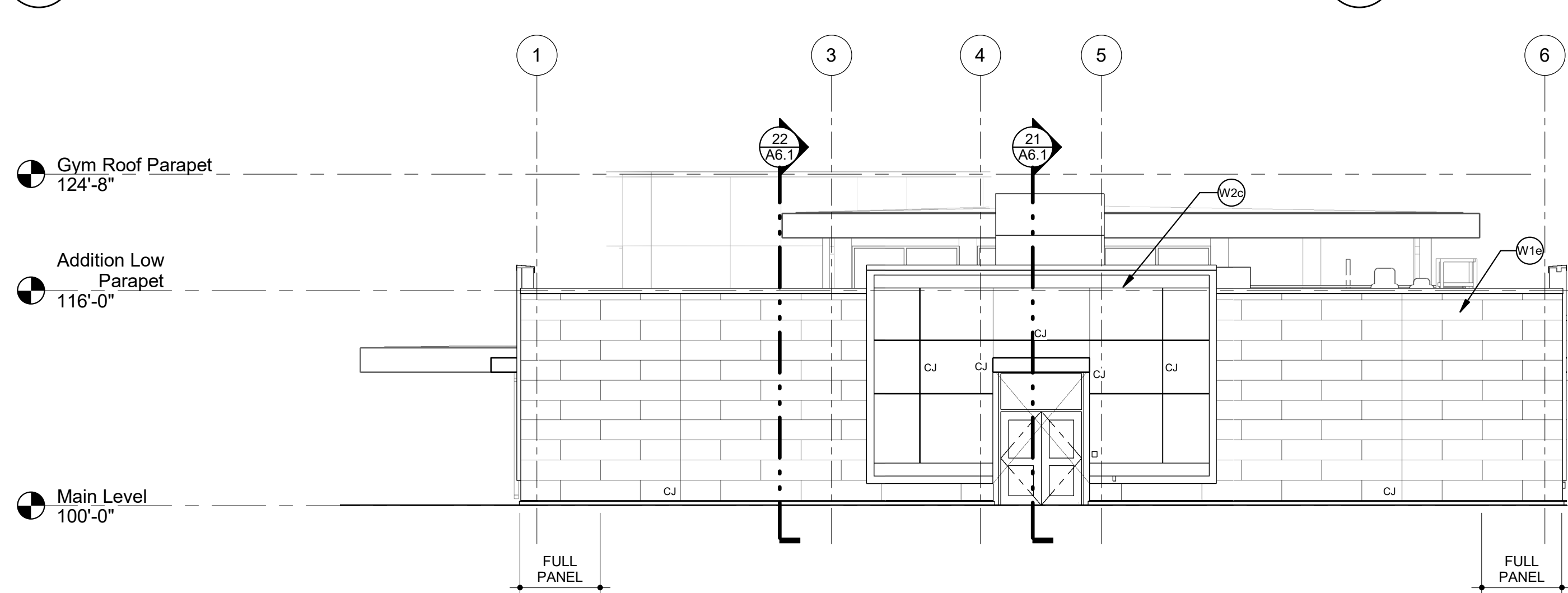
29 Addition Lobby South Elevation  
Scale: 1/8" = 1'-0"



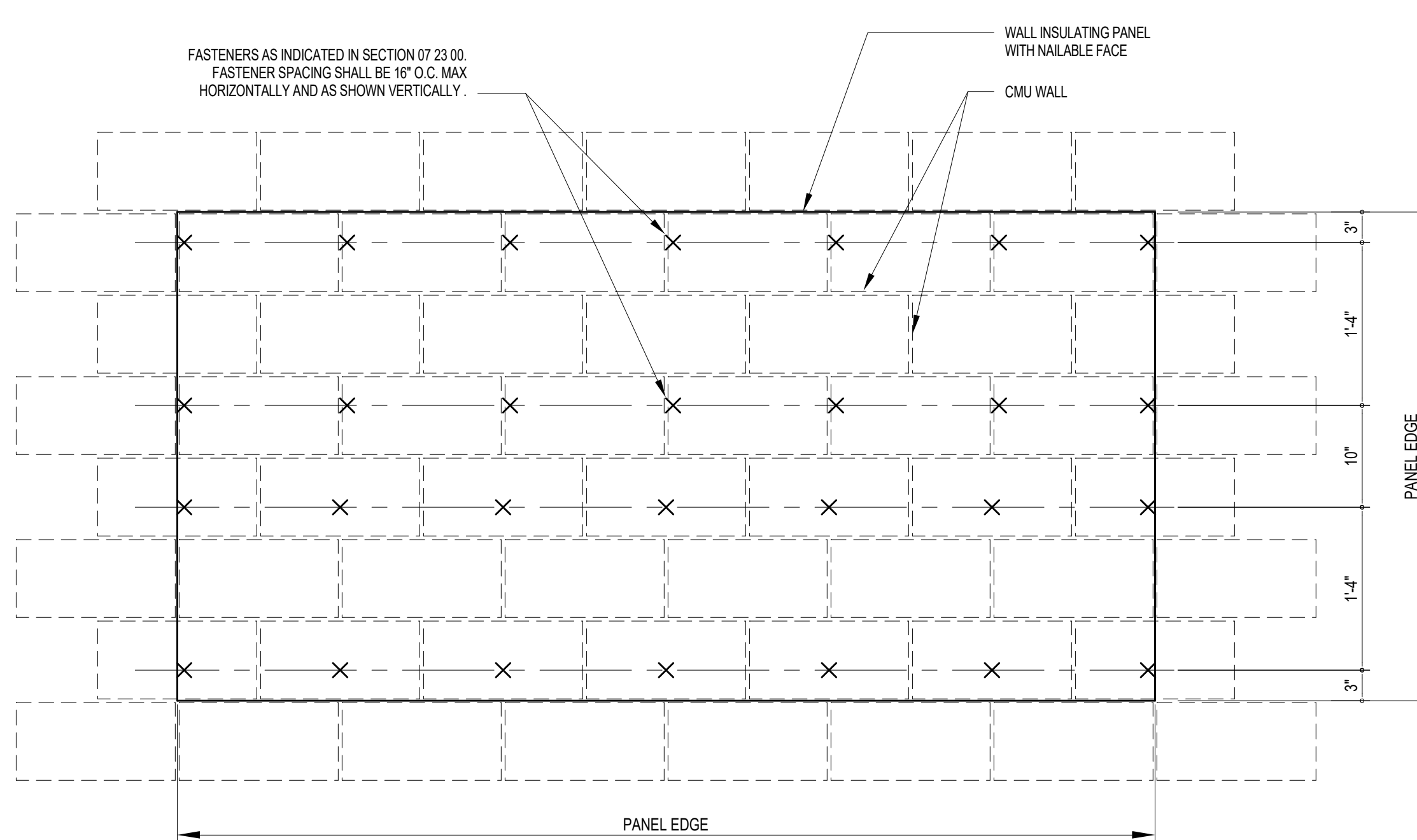
28 Addition Lobby & Classroom North Elevation  
Scale: 1/8" = 1'-0"



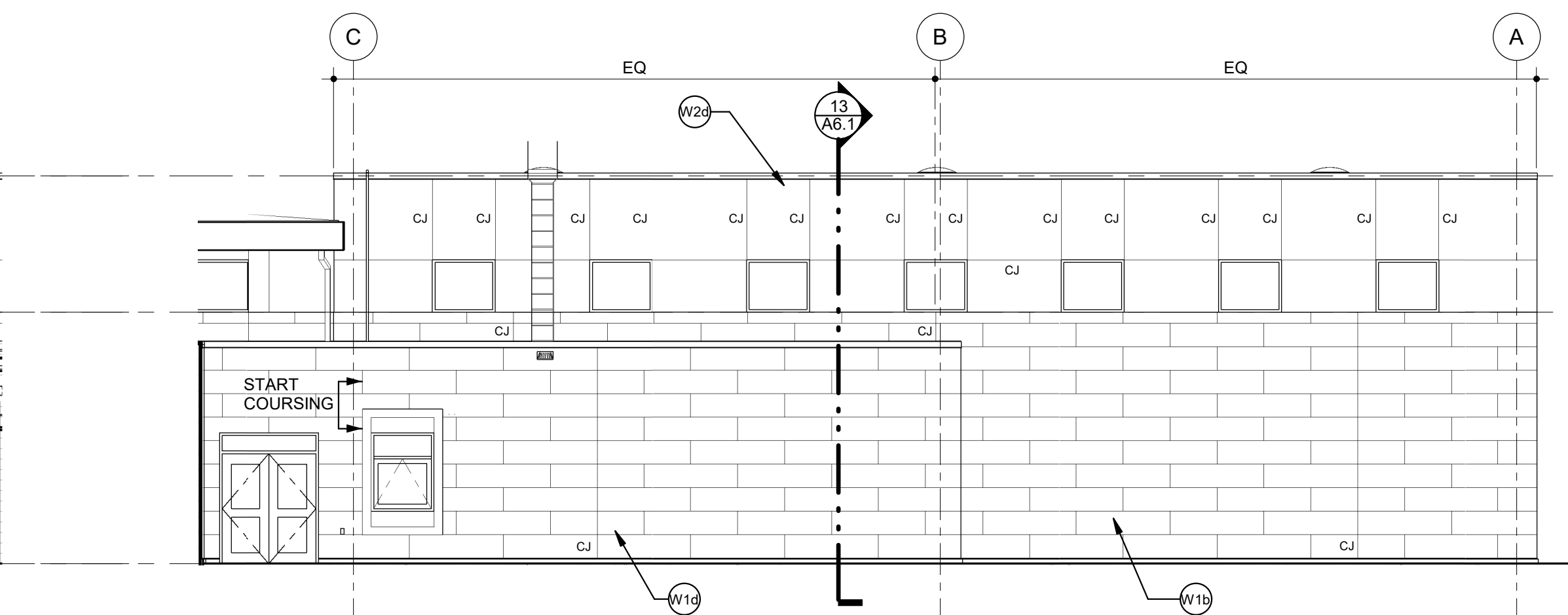
27 Addition Gym South Elevation  
Scale: 1/8" = 1'-0"



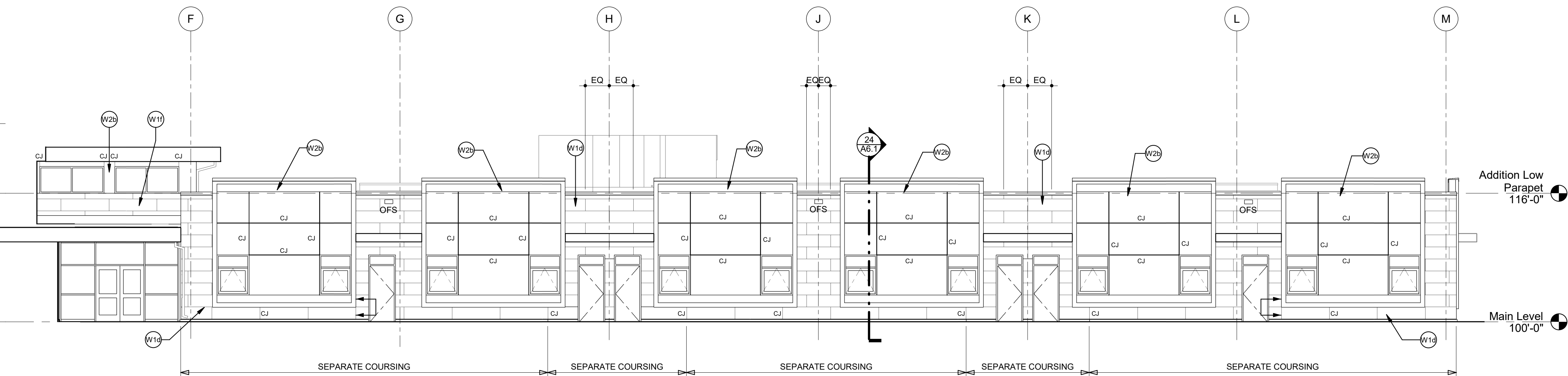
26 Addition East Elevation Classroom  
Scale: 1/8" = 1'-0"



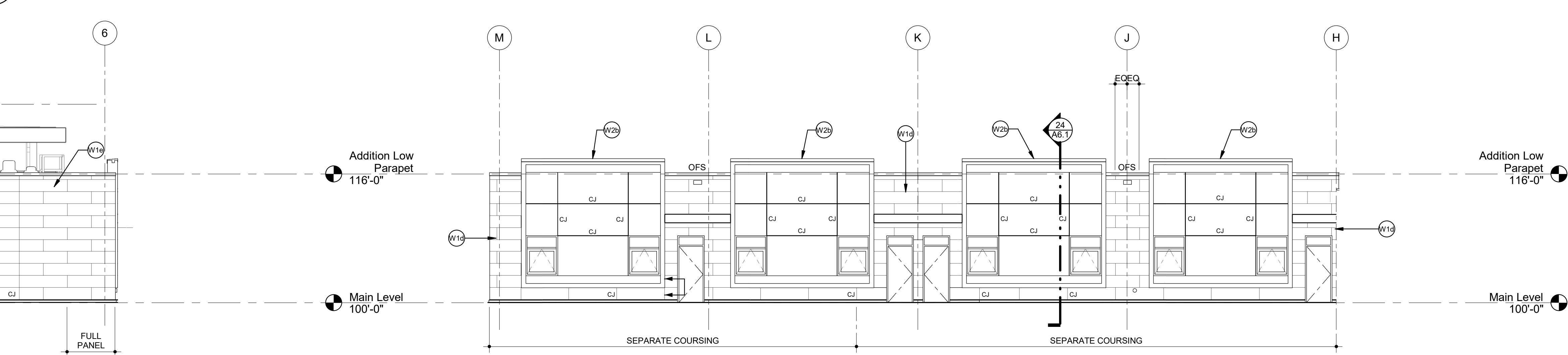
19 Anchor Pattern - Wall Insulating Panels with Nailable Face Over CMU  
Scale: 1" = 1'-0"



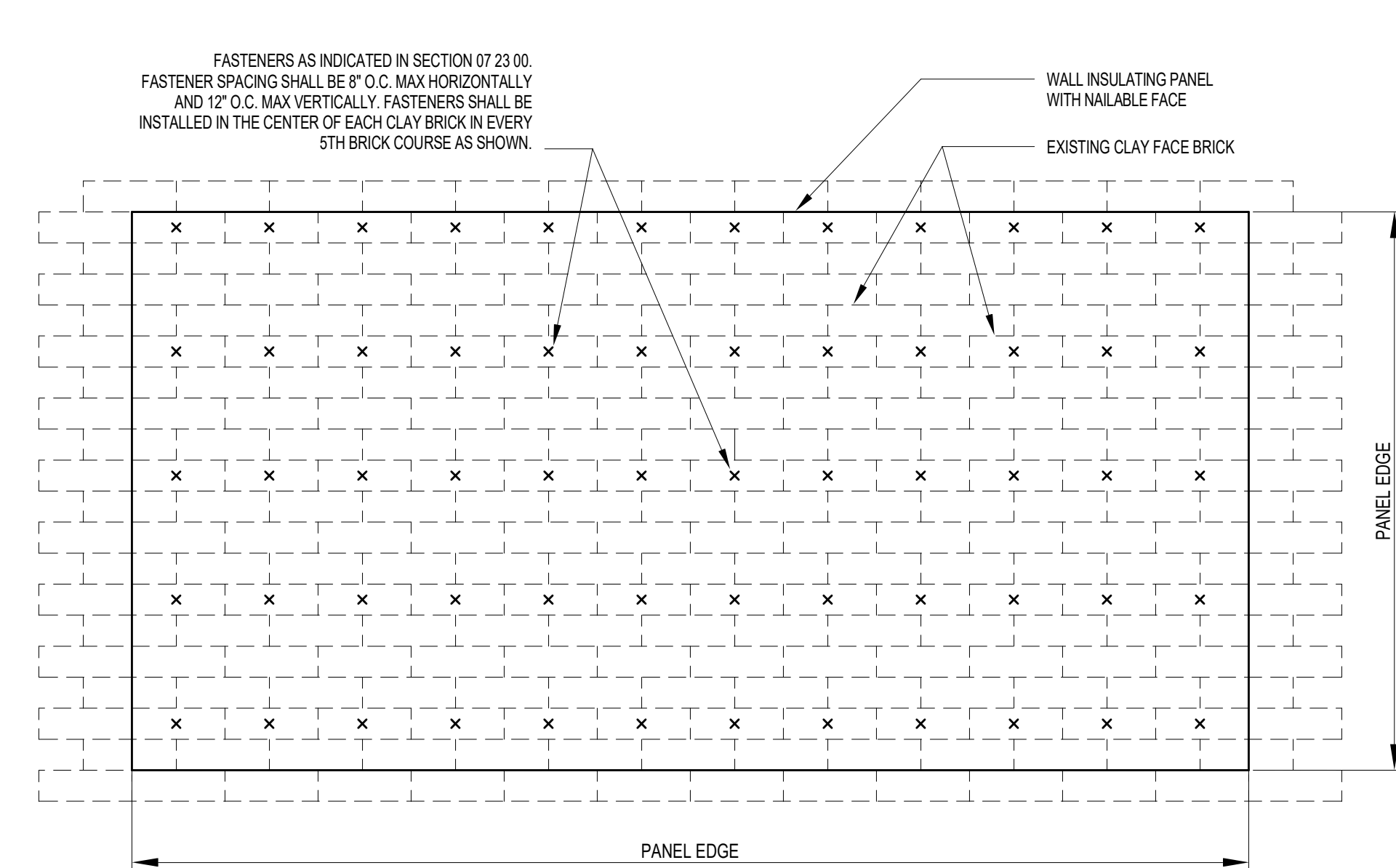
18 Addition Gym North Elevation  
Scale: 1/8" = 1'-0"



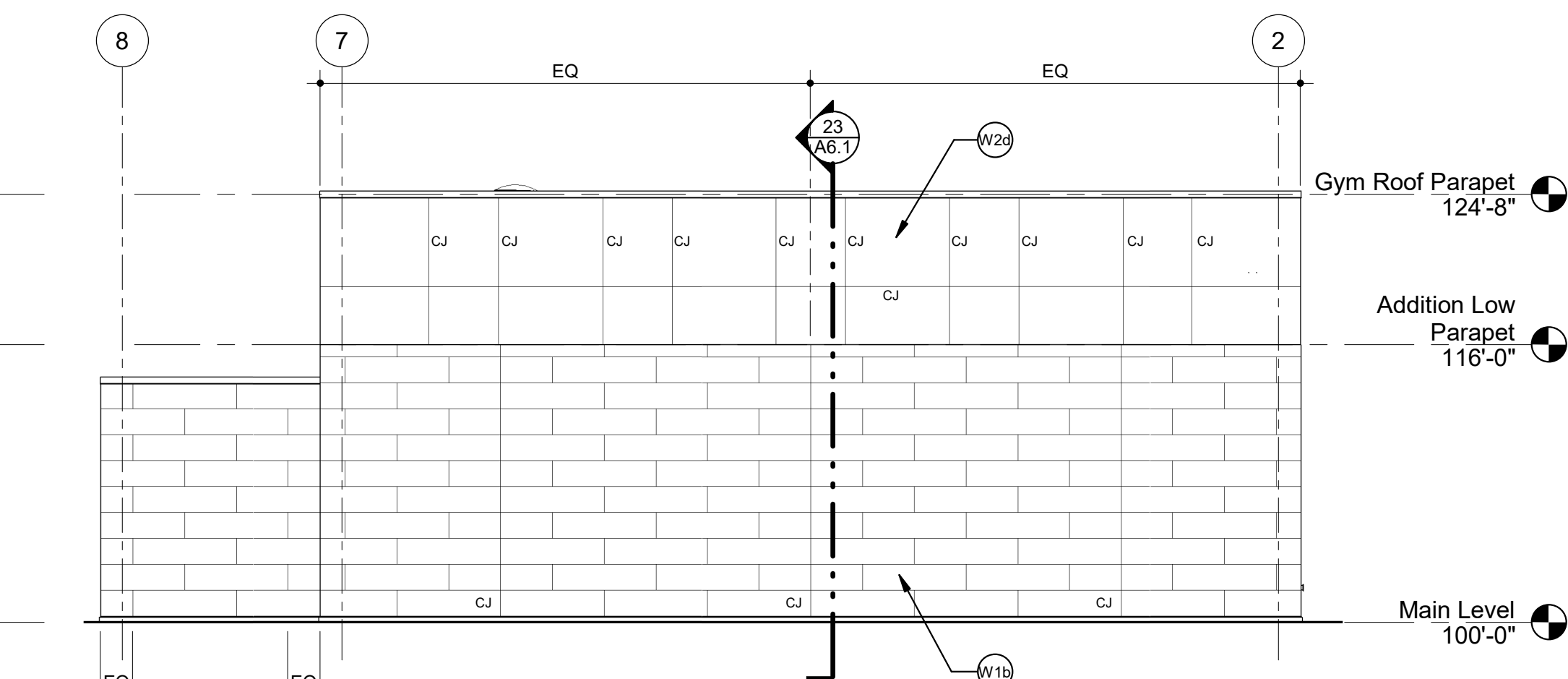
17 Addition South Classroom Elevation  
Scale: 1/8" = 1'-0"



11 Addition North Classroom Elevation  
Scale: 1/8" = 1'-0"



9 Anchor Pattern - Wall Insulating Panels with Nailable Face Over Existing Face Brick  
Scale: 1" = 1'-0"

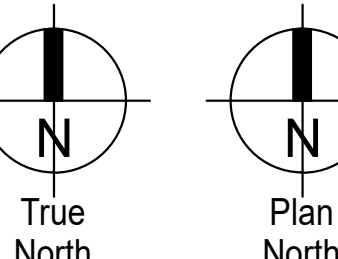
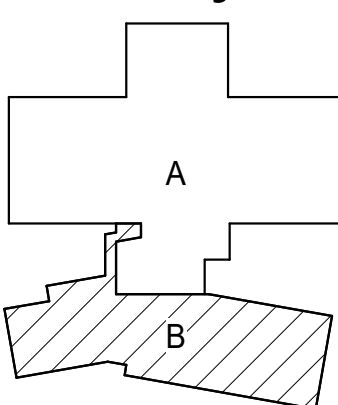


8 Addition Gym West Elevation  
Scale: 1/8" = 1'-0"

## Construction Documents

Drawn: TAJ  
Checked: JMS  
Issued: 11 January 2022  
Revised:

## Area Key Plan



## ADDITION EXTERIOR ELEVATIONS