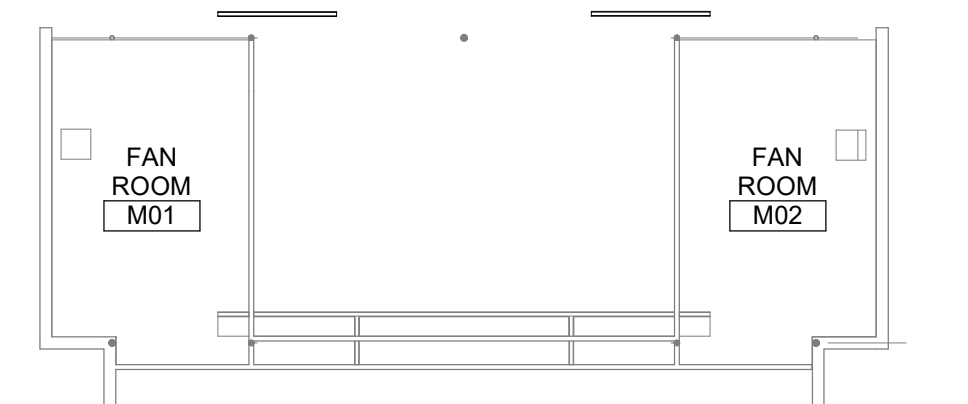


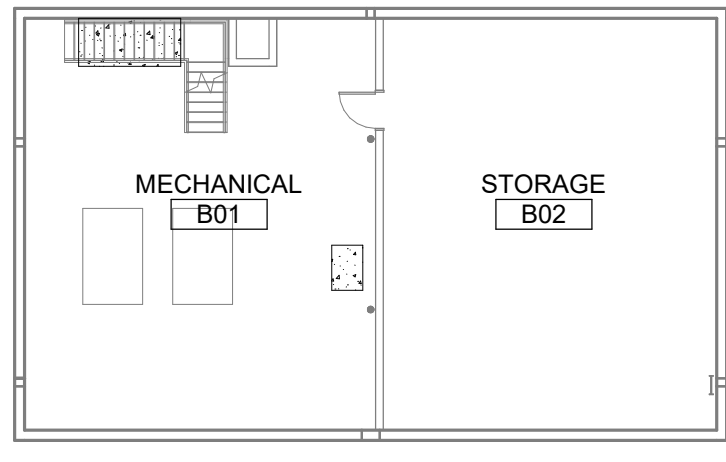
Key Note List

- | | |
|--|---|
| 31 CONC FOUNDATION | 91 PORTLAND CEMENT PLASTER |
| 32 CONC GIRDE BEAM | 92 ACOUSTICAL |
| 33 CONC SLAB | 93 VENEER PLASTER |
| 34 UNDERSLAB GRAVEL BED | 94 ACYCLIC THIN COAT STUCCO |
| 35 UNDERSLAB VAPOR RETARDER | 95 PORTLAND CEMENT STUCCO |
| 36 UNDERSLAB BUCKER/LAYER | 96 DRYWALL STUD |
| 37 CONC COLUMN | 97 ACOUSTICAL INSUL |
| 38 CONC BEAM | 98 GYPSUM BOARD |
| 39 CONC WALL | 99 ABUSE RESISTANT GYPSUM BOARD |
| 310 PRECAST CONC COL BEAM | 100 WATER RESISTANT GYPSUM BOARD |
| 311 PRECAST CONC WALL PANEL | 101 GYPSUM SHEATHING |
| 312 PRECAST CONC DOUBLE TEE | 102 SHAFTRAIL SYSTEM |
| 313 CONC SPLASH BLOCK | 103 SUSPENDED CEILING |
| 314 CONC WEIGHT CONC | 104 SUSPENDED CEILING SYSTEM |
| 315 REINFORCING BAR | 105 ACYCLIC TILE |
| 316 WELDED WIRE FABRIC | 106 QUARRY TILE |
| 317 PREMOLDED JOINT FILLER | 107 CERAMIC TILE BASE |
| 318 WATERSTOP | 108 PORCELAIN TILE |
| 41 CMJ | 109 POLYETHYLENE WAPOR BARRIER |
| 42 CMJ SOLID UNIT SOID | 110 WEIGHT ROOM FLOORING |
| 43 CMJ SAND FILLED TILE | 111 VINYL COMPOSITION SHEET VINYL FLOORING |
| 44 FACE BRICK | 112 SEAMLESS TROWELED FLOORING |
| 45 GROUT FULL | 113 CARPET |
| 46 HORIZ MASONRY REINFORCING | 114 RUBBER BASE |
| 47 MASONRY ANCHOR | 115 RUBBER TREADS & RISERS |
| 48 DOWEL ANCHOR | 116 RUBBER STAR SKIRT |
| 49 MASONRY VENEER | 117 VINYL WALL COVERING |
| 50 MASONRY WASHING | 118 ACOUSTICAL WALL PANEL |
| 51 WEEP SYSTEM | 119 SCALABLE WALL PANEL |
| 52 SEM RIGID WALL FRIEBRAND | 120 PAINT |
| 53 CONC PAVER | 121 METAL TOILET PARTITION |
| 54 METAL DRAINER COLLECTION SYSTEM | 122 PLASTIC TOILET PARTITION |
| 55 STEEL COLUMN | 123 IRONAL SCREEN |
| 56 STEEL BEAM | 124 SHOWER COMPARTMENT |
| 57 STEEL ANGLE | 125 CURBLE TRACK |
| 58 WELD PLATE | 126 CURTAIN |
| 59 STEEL ROOF DECK | 127 METAL WALL LOUVER DECK |
| 60 CORRUGATED METAL FORMING | 128 FLAGPOLE |
| 61 STRUCTURAL STUD JOIST | 129 RIBBON BENCH |
| 62 COLD-FORMED METAL FRAMING | 130 LOCKER |
| 63 STEEL LADDER | 131 FIBERGLASS DROUGHTER CABINET |
| 64 CONC FILLED STEEL PANEL STAR TRUSS | 132 WIRE MESH BRACKET |
| 65 RIBBER | 133 WIRE MESH PARTITION |
| 66 CONC MANUFACTURED STEEL STAR SYSTEM | 134 WIRE MESH DOOR |
| 67 ABRASIVE STAR | 135 COLING GATE |
| 68 STEEL RAILING | 136 DEMOUNTABLE PARTITION |
| 69 STEEL RAILING | 137 FOLDING PANEL |
| 70 SUMP PAN | 138 MTL STORAGE SHELVING |
| 71 CHECKERED PLATE | 139 ROLLING STORAGE UNIT |
| 72 STEEL COL COVER | 140 BACKPACK HOOK |
| 73 ISOLATED POST | 141 PLATFORM CURTAIN |
| 74 WOOD FRAMING | 142 WINDOW CURTAIN |
| 75 WOOD STUD JOIST | 143 PROTECTION SCREEN |
| 76 WOOD ROOFING | 144 WINDOW/DOOR MOUNTING BRACKET |
| 77 WOOD FURRING | 145 WINDOW/DOOR MOUNTING BRACKET |
| 78 WOOD TRUSS | 146 WINDOW/DOOR BACKSTOP |
| 79 GLUED LAMINATED VENEER | 147 WINDOW/DOOR BACKSTOP |
| 80 LAMINATED VENEER LINER | 148 WINDOW/DOOR CURTAIN |
| 81 PLYWOOD SHEATHING | 149 GYM WALL PAD |
| 82 ORIENTED STRAND BOARD SHEATHING | 150 GYM FLOOR |
| 83 PORTLE BOARDING | 151 SLAB |
| 84 TEMPERED HARDBOARD | 152 CERAMIC KLN |
| 85 PLASTIC LAMINATE | 153 LAMMELLE STORAGE CABINET |
| 86 WOOD FLOORING | 154 VENTED ACID STORAGE CABINET |
| 87 WOOD CEILING | 155 WOOD HANDRAIL |
| 88 WOOD TRIM | 156 WOOD TRIM |
| 89 WOOD SHELF | 157 PLASTIC LAMINATE COUNTERTOP |
| 90 DAMPROOFING | 158 SELF-ADHERED SHEET MEMBRANE WATERPROOFING |
| 91 SELF-ADHERED SHEET MEMBRANE WATERPROOFING | 159 FLUID APPLIED WATERPROOFING |
| 92 WATER REPELLENT GRAFTIT CONTROL COATING | 160 INSULATION |
| 93 INSULATION | 161 TAPERED INSUL |
| 94 TAPERED INSUL | 162 RIGID INSULATION |
| 95 BLANKET INSULATION | 163 FOAMED INSULATION |
| 96 FOAMED INSULATION | 164 BLANKET INSULATION |
| 97 BLANKET INSULATION | 165 TELESCOPING GYM BLEACHER |
| 98 PORTABLE GYM BLEACHERS | 166 EXT BLEACHERS |
| 99 ELEVATOR | 167 WHEELCHAIR LIFT |
| 100 PLUMBING PIPING | 168 GAS PIPING |
| 101 FIRE SPRINKLER PIPING | 169 FIRE SPRINKLER HEAD |
| 102 ROOF WALKWAY PAVR | 170 RULER STACK & VENT CAP |
| 103 EKH HOOD | 171 MECH WORK |
| 104 MECH RTU | 172 ROOF DRAIN TRAY |
| 105 ROOF EXH VENT | 173 ROOF EXH VENT HOOD |
| 106 UL'S A VENT CAP | 174 ELEC CONDUIT |
| 107 ELEC OUTLET | 175 LIGHT FIXTURE |
| 108 ELEC LIGHT SWITCH | 176 ELEC JUNCTION BOX |
| 109 EXT LIGHT | 177 EXHAUSTOR |
| 110 MASTER CLOCK | 178 COMMUNICATIONS EQUIPMENT |
| 111 COMMUNICATIONS CONDUIT W/ING | 179 SECURITY SYSTEM CONDUIT W/ING |
| 112 SECURITY CAMERA | 180 SECURITY MONITOR |
| 113 HORN | 181 HORN |
| 114 STROBE | 182 STROBE |
| 115 ALARM STATION | 183 ALARM STATION CONTROL PANEL |
| 116 FIRE ALARM GRAPHIC & ANNUNCIATION PANEL | 184 BACKFILL |
| 117 FRIE DRAINING | 185 GRANULAR BACKFILL |
| 118 CONCRETE PAVING | 189 AGGREGATE BASE COURSE |
| 119 CONC CURB & GUTTER | 190 CONC WALKWAY |
| 120 CONC PAVR | 191 TRIMS COURT SURFACING |
| 121 TRIMS COURT SURFACING | 192 TRIMS COURT SURFACING |
| 122 LANDSCAPE TIMBER PIPE | 193 LANDSCAPE TIMBER PIPE |
| 123 CHAIN LINK GATE | 194 CHAIN LINK GATE |
| 124 TREE GRATE | 195 TREE GRATE |
| 125 PERFORATED DRAIN | 196 PERFORATED DRAIN |
| 126 PERFORATED DRAIN | 197 PERFORATED DRAIN |
| 127 TRENCH DRAIN | 198 TRENCH DRAIN |
| 128 CONC CHANNEL | 199 CONC CHANNEL |
| 129 MANHOLE | 200 CONC HEAD WALL |
| 130 CONC PIPE FLARED END SECTION | |

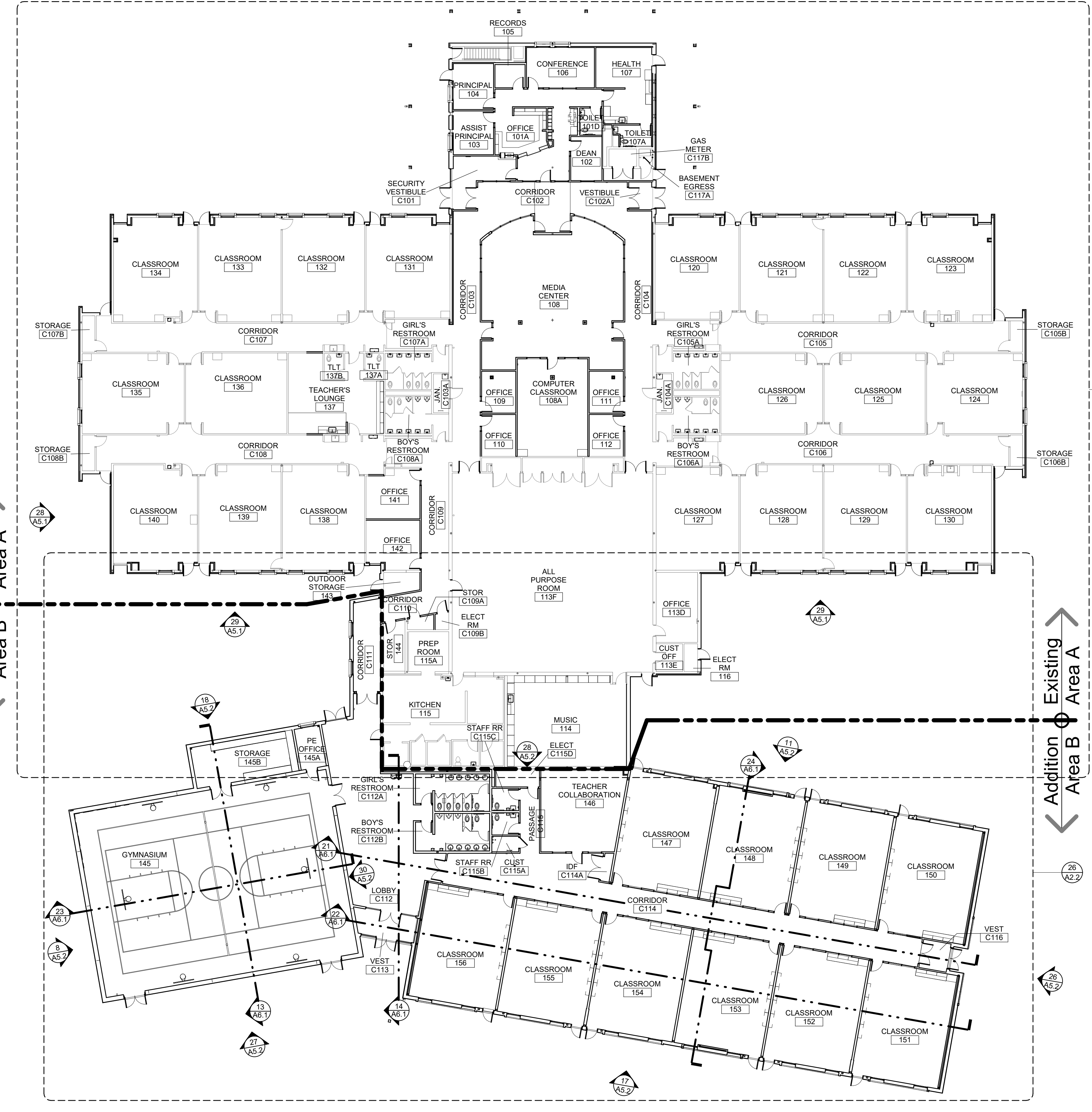
15 Fan Room Plan
 Scale: 1/16" = 1'-0"



24 Basement Floor Plan
 Scale: 1/16" = 1'-0"



16 Overall Main Level Plan
 Scale: 1/16" = 1'-0"



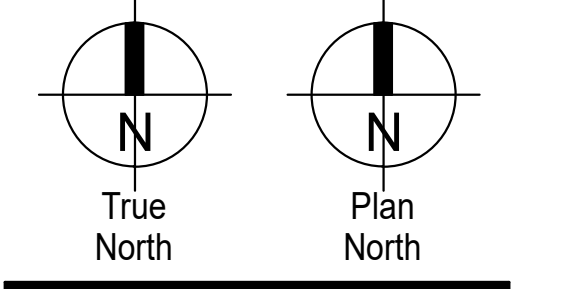
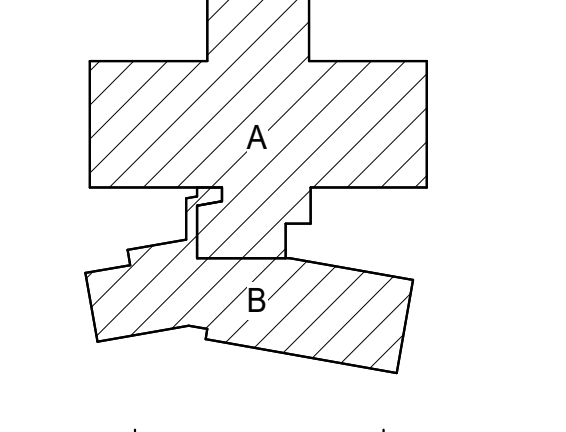
Webster Elementary School
Addition and Alterations
 445 Jersey Lane, Colorado Springs, CO 80911
 Widefield School District 3
 1820 Main Street
 Colorado Springs, CO 80911



Construction Documents

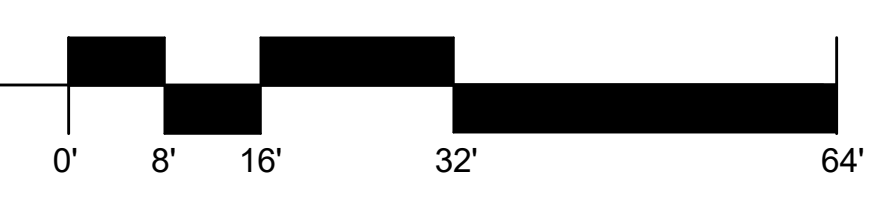
Drawn: FWK, SLH
 Checked: JMS
 Issued: 11 January 2022
 Revised:

Area Key Plan



OVERALL MAIN LEVEL PLAN

A1.1
 Project No. 21-003
 The LKA Partners Incorporated



NOTE: THE KEYNOTE REFERENCE NUMBERS SHOWN ABOVE MAY OR MAY NOT CORRESPOND TO SPECIFICATION SECTIONS IN THE PROJECT MANUAL.