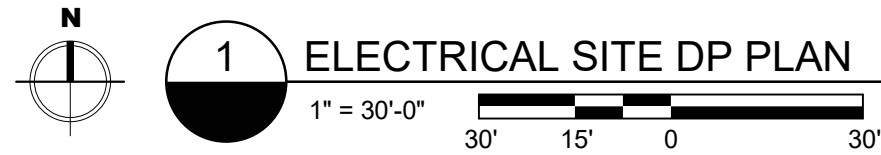


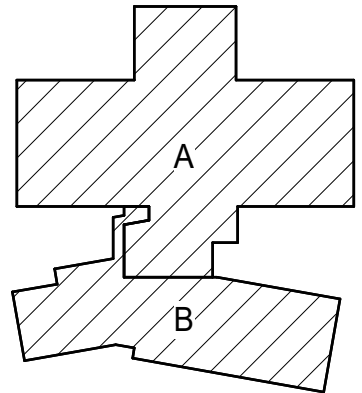
EXTERIOR LUMINAIRE SCHEDULE																
KEY	SOURCE				POWER				DESCRIPTION	FINISH	MOUNTING			MANUFACTURER	CATALOG #	NOTES
	TYPE	CRI	CCT	DELIVERED LUMENS	VOLT	VA	DRIVER/BALLAST	DIMMING			TYPE	DEPTH	MOUNT HEIGHT			
N	LED	80+	4000K	3158	277 V	34	0-10V	1%	6" ROUND LED DOWNLIGHT WITH DAMP LISTING	SEMI-SPECULAR	RECESSED	6.68"		PRESCOLITE	LTR-6RD-H-XL30L-DM1-LTR-6RD-T-ML40K8WD-SSWT	
NE	LED	80+	4000K	3158	277 V	34	0-10V	1%	6" ROUND LED DOWNLIGHT WITH DAMP LISTING AND BATTERY BACKUP	SEMI-SPECULAR	RECESSED	6.68"		PRESCOLITE	LTR-6RD-H-XL30L-DM1EM-LTR-6RD-T-ML40K8WD-SSWT	
S1	LED	80+	4000K	9922	277 V	87	0-10V	10%	LED WALL MOUNTED FULL CUT OFF AREA LIGHT W/ BATTERY BACKUP	VFY WITH ARCH	WALL	+9'-0" TO CENTER		HUBBELL	TRP2-24L-70-4K8-3-UNV-ARCH TO SELECT	
S2	LED	70+	4000K	12275	277 V	110	0-10V	10%	LED PARKING LOT LUMINAIRE ON 20'-0" ROUND TAPERED STEEL POLE	VFY WITH ARCH	POLE			BEACON	VPS-48L-110-4K7-3-UNV-A4-ARCH TO SELECT-NXSP400F POLE-RTS-B-20'-10-A-1-83-ARCH TO SELECT-SBC	
S3	LED	80+	4000K	8864	277 V	65	0-10V	10%	LED WALL MOUNTED FULL CUT OFF AREA LIGHT W/ TYPE IV WIDE DISTRIBUTION	VFY WITH ARCH	WALL	+9'-6" TO CENTER		BEACON	VPS-36L-65-4K7-4W-UNV-WB-ARCH TO SELECT-NXSP	



**CONSTRUCTION
DOCUMENTS**

Drawn: CBW
Checked: JTV
Issued: 4 April 2022
Revised:

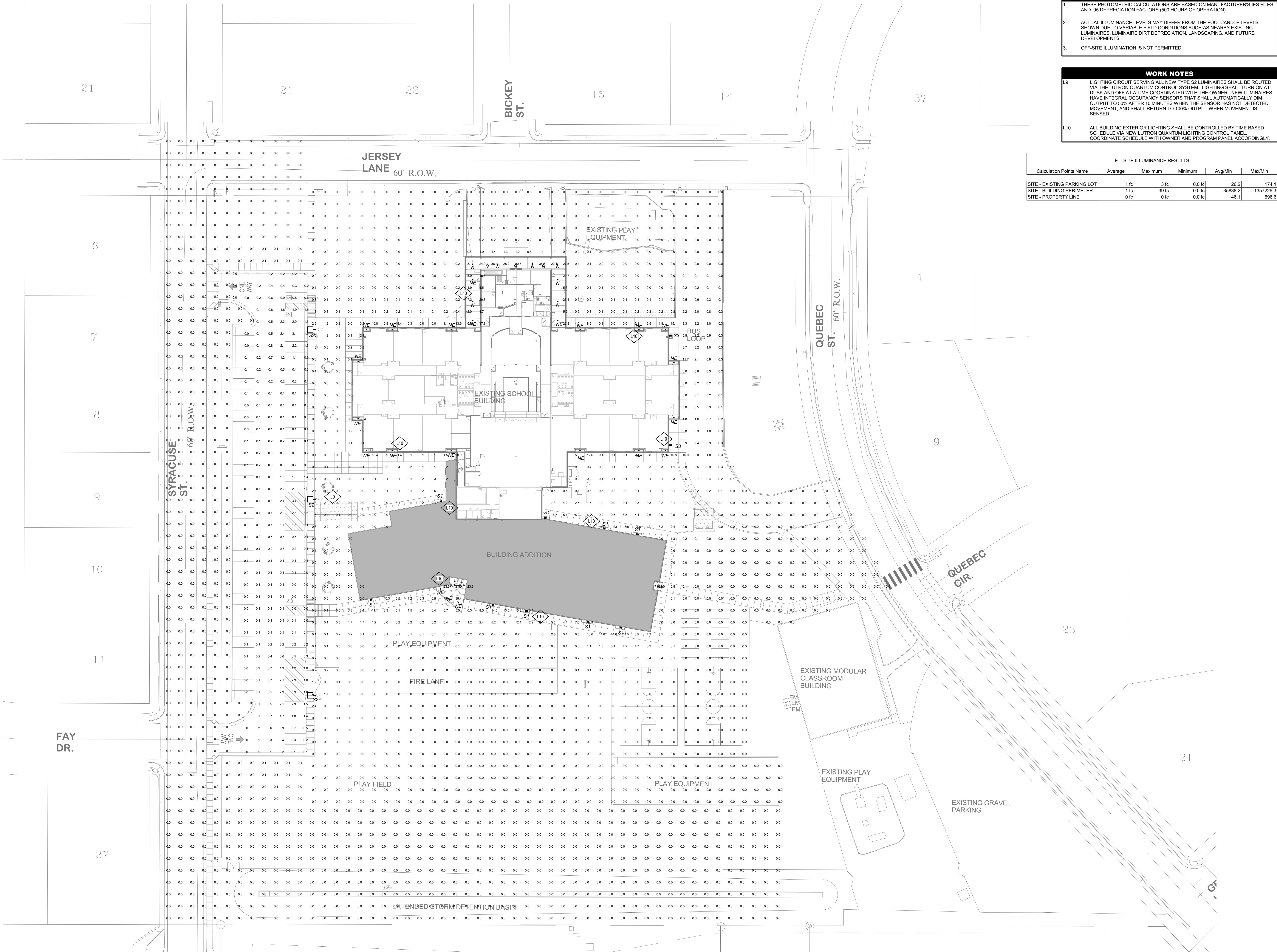
Area Key Plan



**ELECTRICAL SITE DP
PLAN**

E1.0S

Project No. 21-003
The LKA Partners Incorporated



- GENERAL NOTES**
 - THESE PHOTOMETRIC CALCULATIONS ARE BASED ON MANUFACTURER'S IES FILES AND .95 DEPRECIATION FACTORS (500 HOURS OF OPERATION).
 - ACTUAL ILLUMINANCE LEVELS MAY DIFFER FROM THE FOOTCANDLE LEVELS SHOWN DUE TO VARIABLE FIELD CONDITIONS SUCH AS NEARBY EXISTING LUMINAIRES, LUMINAIRE DIRT DEPRECIATION, LANDSCAPING, AND FUTURE DEVELOPMENTS.
 - OFF-SITE ILLUMINATION IS NOT PERMITTED.
- WORK NOTES**

L9 LIGHTING CIRCUIT SERVING ALL NEW TYPE S2 LUMINAIRES SHALL BE ROUTED VIA THE LUTRON QUANTUM CONTROL SYSTEM. LIGHTING SHALL TURN ON AT DUSK AND OFF AT A TIME COORDINATED WITH THE OWNER. NEW LUMINAIRES HAVE INTEGRAL OCCUPANCY SENSORS THAT SHALL AUTOMATICALLY DIM OUTPUT TO 50% AFTER 10 MINUTES WHEN THE SENSOR HAS NOT DETECTED MOVEMENT, AND SHALL RETURN TO 100% OUTPUT WHEN MOVEMENT IS SENSED.

L10 ALL BUILDING EXTERIOR LIGHTING SHALL BE CONTROLLED BY TIME BASED SCHEDULE VIA NEW LUTRON QUANTUM LIGHTING CONTROL PANEL COORDINATE SCHEDULE WITH OWNER AND PROGRAM PANEL ACCORDINGLY.

E - SITE ILLUMINANCE RESULTS					
Calculation Points Name	Average	Maximum	Minimum	Avg/Min	Max/Min
SITE - EXISTING PARKING LOT	1 fc	3 fc	0.0 fc	26.2	174.1
SITE - BUILDING PERIMETER	1 fc	39 fc	0.0 fc	35838.2	1357226.3
SITE - PROPERTY LINE	0 fc	0 fc	0.0 fc	46.1	696.6

LKA PARTNERS
INCORPORATED
A Professional Corporation for Architecture and Planning
430 North Tejon Street Suite 208
Colorado Springs Colorado 80903
tele: 719.473.8446 fax: 719.473.8448
web: www.lkpartners.com

BCER
ENGINEERING | TECHNOLOGY | LIFE SAFETY
BCER PROJECT 23021038

© Copyright 2022 The LKA Partners, Inc. This document and the information contained herein may not be reproduced or conveyed in any form without the express written permission of The LKA Partners, Inc. Unauthorized copying, disclosure or construction use are prohibited by copyright law.

**Webster Elementary School
Addition and Alterations**
445 Jersey Lane, Colorado Springs, CO 80911

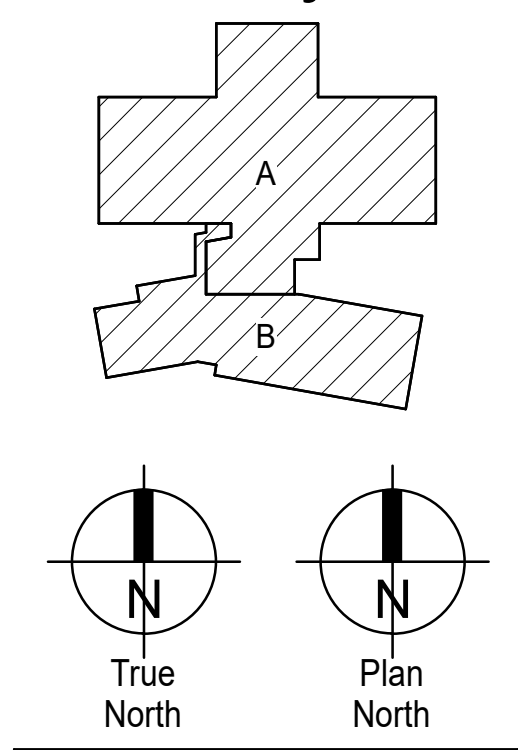
Widefield School District 3
1820 Main Street
Colorado Springs, CO 80911



CONSTRUCTION DOCUMENTS

Drawn: CBW
Checked: JTV
Issued: 4 April 2022
Revised:

Area Key Plan



**ELECTRICAL SITE
LIGHTING PLAN -
PHOTOMETRY**

E1.1S
Project No. 21-003
The LKA Partners Incorporated

© Copyright BCER Engineering
ALL DRAWINGS, SPECIFICATIONS, AND OTHER WORK PRODUCT PREPARED BY BCER ENGINEERING FOR THIS PROJECT ARE INSTRUMENTS OF SERVICE AND SHALL REMAIN THE PROPERTY OF BCER ENGINEERING. BCER ENGINEERING SHALL RETAIN ALL COMMON LAW, STATUTORY AND OTHER RESERVED RIGHTS, INCLUDING THE COPYRIGHT THEREIN.

