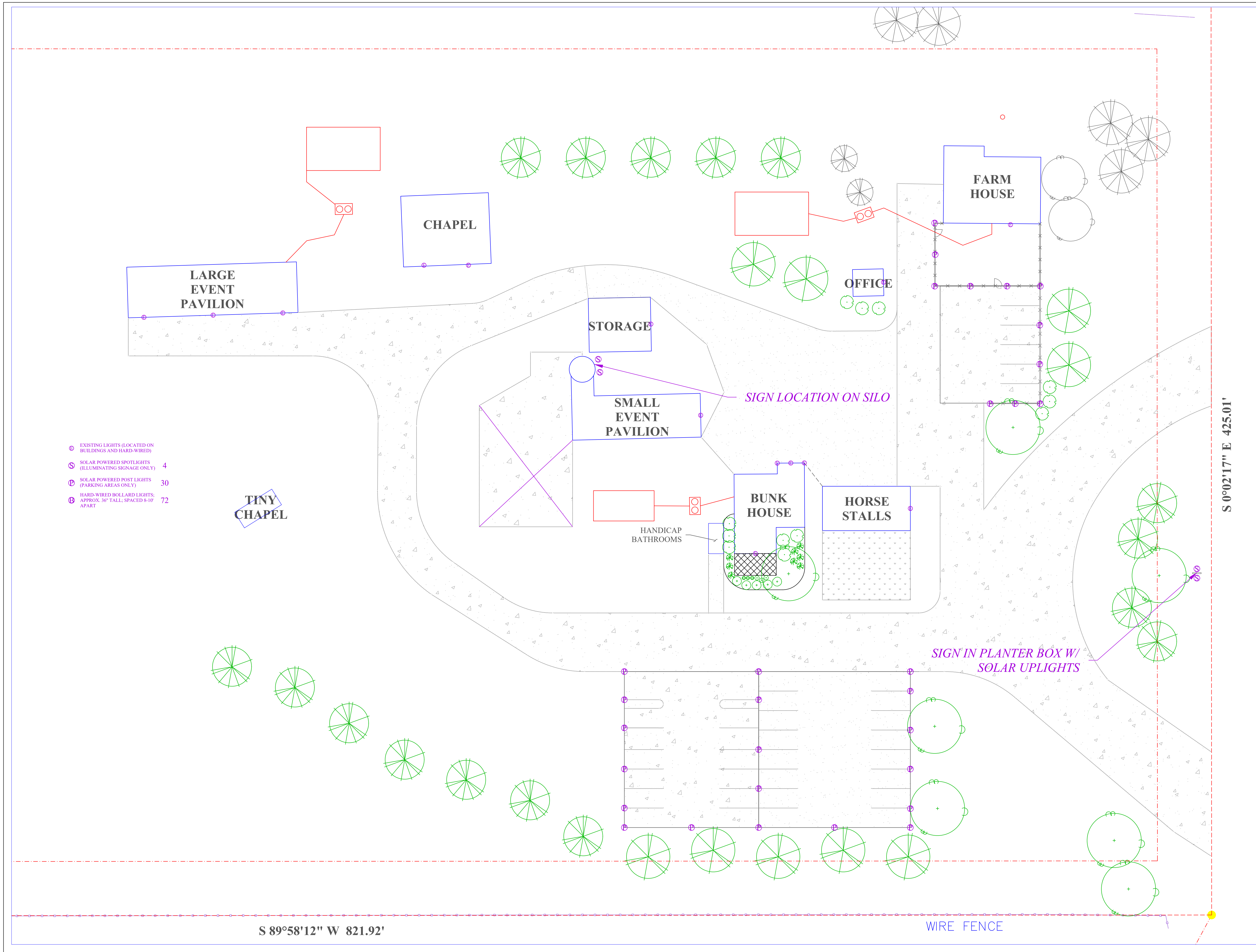


L:\chelsea\folder on freemans\apex landscape design\clients\2021 clients\completed\white cottage farm\white cottage farm\landscapesign.dwg

4/26/2019

CS



- ⊙ EXISTING LIGHTS (LOCATED ON BUILDINGS AND HARD-WIRED)
- ⊙ SOLAR POWERED SPOTLIGHTS (ILLUMINATING SIGNAGE ONLY) 4
- ⊙ SOLAR POWERED POST LIGHTS (PARKING AREAS ONLY) 30
- ⊙ HARD-WIRED BOLLARD LIGHTS, APPROX. 36" TALL, SPACED 8'-10" APART 72

S 89°58'12" W 821.92'

WIRE FENCE

S 0°02'17" E 425.01'

General Notes

- * PROPOSED LIGHTING DOES NOT EXCEED PAST PROPERTY LINES
- * BOLLARD LIGHTING IS DESIGNATED TO HELP DIRECT GUESTS FROM THE DESIGNATED WEDDING AND EVENT BUILDINGS TO PARKING AREAS
- * POST LIGHTS ARE MEANT TO PROVIDE ENOUGH ILLUMINATION TO DIRECT GUESTS TO THEIR VEHICLES
- * BOLLARD LIGHTS ARE TO BE HARD-WIRED IN SO THAT THEY WILL NOT NEED TO BE ONE WHEN THE SPACE IS NOT IN USE
- * POST LIGHTS AND ACCENT LIGHTING IS TO BE SOLAR POWERED

No.	Revision/Issue	Date

PREPARER
CS APEX LANDSCAPE DESIGN
 4903 QUAIL RD
 FOUNTAIN, CO 80817
 (719) 344-0922
 www.csapexlandscapedesign.com

Project Name and Address
WHITE COTTAGE FARM
 16910 THOMPSON RD
 COLORADO SPRINGS, CO 80908
 OWNER: SHAWNA SCHOTANUS
 TAX SCHEDULE NUMBER: 51190-00-007
 FILING: 51190 000 07
 ZONING: RR-5

PETITIONER
URBAN STRATEGIES, INC
 LES GRUEN
 26 SOUTH TEJON STREET, SUITE 200
 COLORADO SPRINGS, CO 80903
 719-227-7777
 urbanstrategies@msn.com

Project LIGHTING PLAN & SIGNAGE PLAN Date 7/3/2021 Scale 1" = 20'-0" <small>PAPER SIZE: 24 x 36</small>	Sheet L106
--	-----------------------------