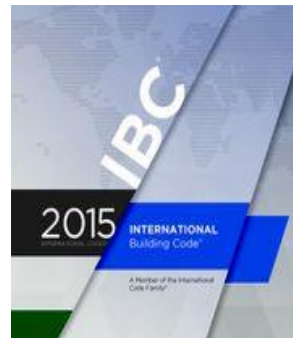
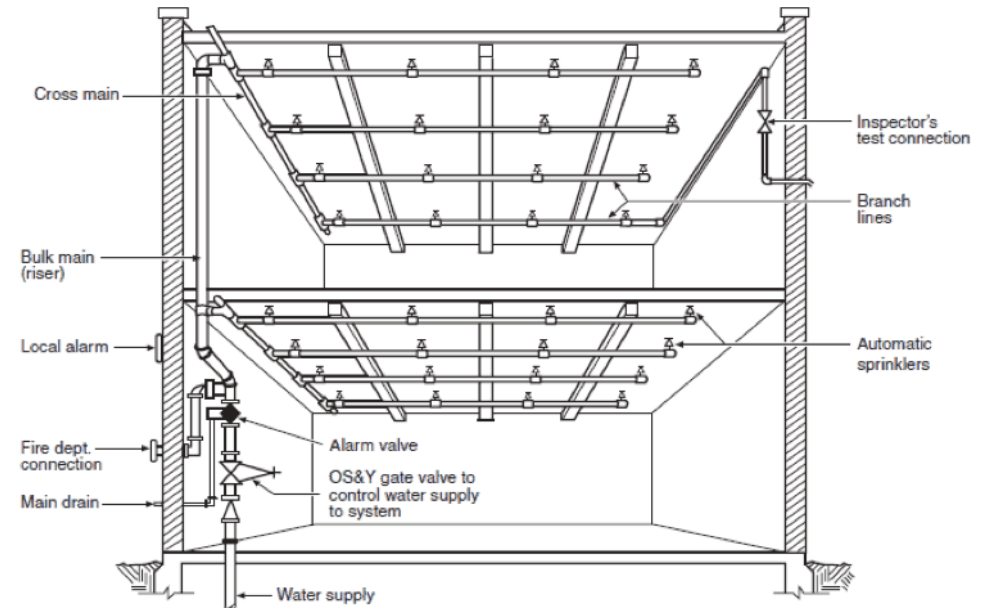




Cimarron Hills Fire Department Fire Prevention Division Contractor's Checklist and Installation Design Guide





**Cimarron Hills Fire Department
Fire Prevention Division
Contractor's Checklist Table of Contents**

<input type="checkbox"/> Fire Protection Narrative.....3	<input type="checkbox"/> Knox Box/Front Lobby.....9
<input type="checkbox"/> Code Study Form Info.....3	<input type="checkbox"/> Exits/Pull Stations.....10
<input type="checkbox"/> Plan Review Cycle.....4	<input type="checkbox"/> Fire Extinguishers.....11
<input type="checkbox"/> Project Fire Safety Plan.....5	<input type="checkbox"/> Fire Suppression Systems.....12
<input type="checkbox"/> Project Water Supply/Access...6	<input type="checkbox"/> FDC Specs and Signage.....13
<input type="checkbox"/> Access Roads.....7	<input type="checkbox"/> Smoke Detectors.....14
<input type="checkbox"/> Fire Lanes Curbs/Signage.....8	<input type="checkbox"/> Certificate of Occupancy.....15



Cimarron Hills Fire Department Fire Protection Narrative/Code Study

Fire Protection Narrative

- A Fire Protection Narrative will be required by CHFD Fire Prevention to give an overview of a particular Fire Protection System.
- The Narrative should include an overview of the components and function of Life Safety Systems
- Compared to the Plans for the Life Safety System
- Please include all references for the given system, for example: NFPA 13, 72, 96

Code Study Form

- Required through the Building Department
- Change of Occupancy or Change of Building type
- Reviewed by CHFD for compliance with IFC

Pikes Peak REGIONAL Building Department

CODE STUDY FORM

SECTION 1.0

This form is intended to be completed using a PDF reader and must be stamped by the design professional of record. This form must be included as an attachment, or as part of the second page of the plans for all commercial projects. All information must be provided.

Address: _____ City: _____ Zip: _____

Tax Schedule Number:⁽¹⁾ _____

Legal Description:⁽¹⁾ _____

ZONING DISTRICT:⁽¹⁾ SELECT ONE _____

FIRE JURISDICTION:⁽¹⁾ SELECT ONE _____ IF OTHER, SPECIFY _____

⁽¹⁾ This information may be found [HERE](#)

SCOPE OF PROJECT:

PHASED PROJECTS:

Foundation Only Superstructure Core/Shell Finish

REGULAR PROJECTS:

Interior Remodel Interior Finish Addition Complete Building

Change of Occupancy Other _____

DESCRIPTION OF WORK:

PRINCIPAL USE OF BUILDING: _____

TYPE OF CONSTRUCTION: (International Building Code)

I-A II-A III-A IV V-A

I-B II-B III-B V-B

BUILDING HEIGHTS AND AREAS: _____



Cimarron Hills Fire Department Plan Review Cycle

Pikes Peak Planning Department:

- Development Plans
- Water Plans
- Site Drawings
- Comments Submitted electronically by CHFD with regard to road access, water supply, and hydrant placing



Pikes Peak Building Department:

- Construction/Foundation
- Shells and Tenant Finishes
- CHFD will sign off HazMat/Fire line
- CHFD will provide a memo with what was reviewed and fees



Life Safety System Review:

- Submitted to CHFD for review
- Designer/Installer verified
- Comments and a memo with what was reviewed and fees



Fire Final Sign Off:

- Final Inspection checking exits, emergency lights, extinguishers, and any Life Safety Systems
- Final sign off electronically on PPRBD website.



Cimarron Hills Fire Department Pre-Construction Checklist: Fire Safety Plan

A Fire Safety Plan will be onsite and updated during the project

Plan Elements:

- Smoking Areas Established
- Cooking/Break Areas Determined
- Temporary Heating Policy
- HazMat Plan, location and amounts
- Evacuation Plan, Alerting Employees
- Clear, all weather access: 20' min width, 150' from structure

Project Details:

- Project address, access point
- Emergency POC for Project Lead
- Emergency POC for Safety Manager
- Jurisdiction POCs: Fire Prevention Office, Utility Companies
- Project statement, work description
- Safety policy statement



Cimarron Hills Fire Department

Pre-Construction Checklist: Emergency Access

Water supply and access road required before any materials are on site

Suitable access road within 150' of the foundation is required



Water Supply shall be established before any material is on site (500GPM Min.)



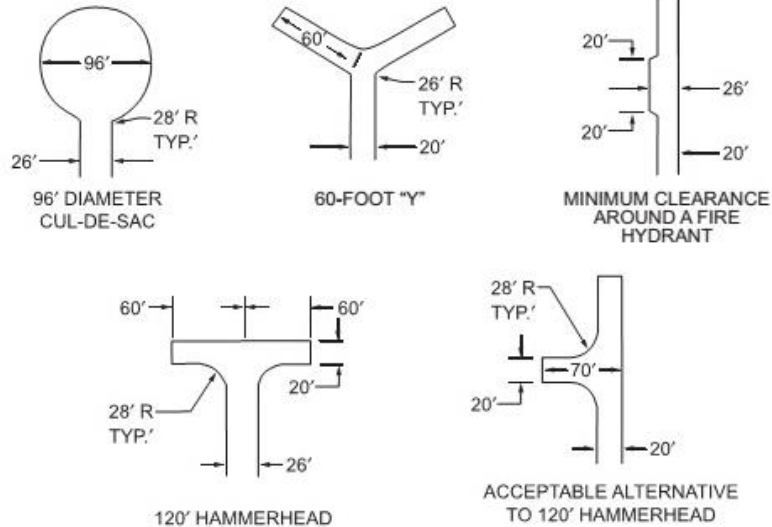


Cimarron Hills Fire Department Fire Protection Requirements by Location: Access Roads

Access roads shall be IAW IFC 2015

D103.1 Access Road Width With a Hydrant

Where a fire hydrant is located on a fire apparatus access road, the minimum road width shall be 26 feet (7925 mm), exclusive of shoulders (see Figure D103.1).



Roads will be all weather surface

TABLE D103.4 REQUIREMENTS FOR DEAD-END FIRE APPARATUS ACCESS ROADS

LENGTH (feet)	WIDTH (feet)	TURNAROUNDS REQUIRED
0-150	20	None required
151-500	20	120-foot Hammerhead, 60-foot "Y" or 96-foot diameter cul-de-sac in accordance with Figure D103.1
501-750	26	120-foot Hammerhead, 60-foot "Y" or 96-foot diameter cul-de-sac in accordance with Figure D103.1
Over 750		Special approval required



Cimarron Hills Fire Department Fire Protection Requirements by Location: Access Roads

Access Roads and Driveways will be built to accommodate our Ladder Truck

- 38' Long and 10' Wide
- 11' 7" High
- 52,500 GVW
- Angle of Departure: Less than 10%
- Angle of Approach: Less than 10%
- Outside Turning Radius: 50'
- Undercarriage clearance: 10"

CHFD Ladder 1331 75 foot Aerial Ladder Truck





Cimarron Hills Fire Department Fire Protection Requirements by Location: Fire Lanes

Fire Lane Curbs will be painted red with white lettering



Fire Lane signage will be white, with red lettering, and a red border

D103.6 Signs

Where required by the *fire code official*, fire apparatus access roads shall be marked with permanent NO PARKING—FIRE LANE signs complying with Figure D103.6. Signs shall have a minimum dimension of 12 inches (305 mm) wide by 18 inches (457 mm) high and have red letters on a white reflective background. Signs shall be posted on one or both sides of the fire apparatus road as required by Section D103.6.1 or D103.6.2.

SIGN TYPE "A"



SIGN TYPE "C"



SIGN TYPE "D"





Cimarron Hills Fire Department Fire Protection Requirements by Location: Front Entrance/Lobby Area

Knox Box Key Box will be mounted next to the main entrance 6-8' high



Annunciator Panel and graphic map will be located in the main lobby area and be easily accessed by Fire Personnel





Cimarron Hills Fire Department Fire Protection Requirements by Location: Exits/Pull Stations/Notification

Pull stations will be located 5 feet from every exit and be accessible(NFPA 72)



Occupant Notification includes Horn/Strobes and will be synced





Cimarron Hills Fire Department Fire Protection Requirements by Location: Fire Extinguishers

Fire Extinguishers will be mounted near every exit and at 75' of travel



Specialized Fire Extinguishers maybe required for storage or kitchens

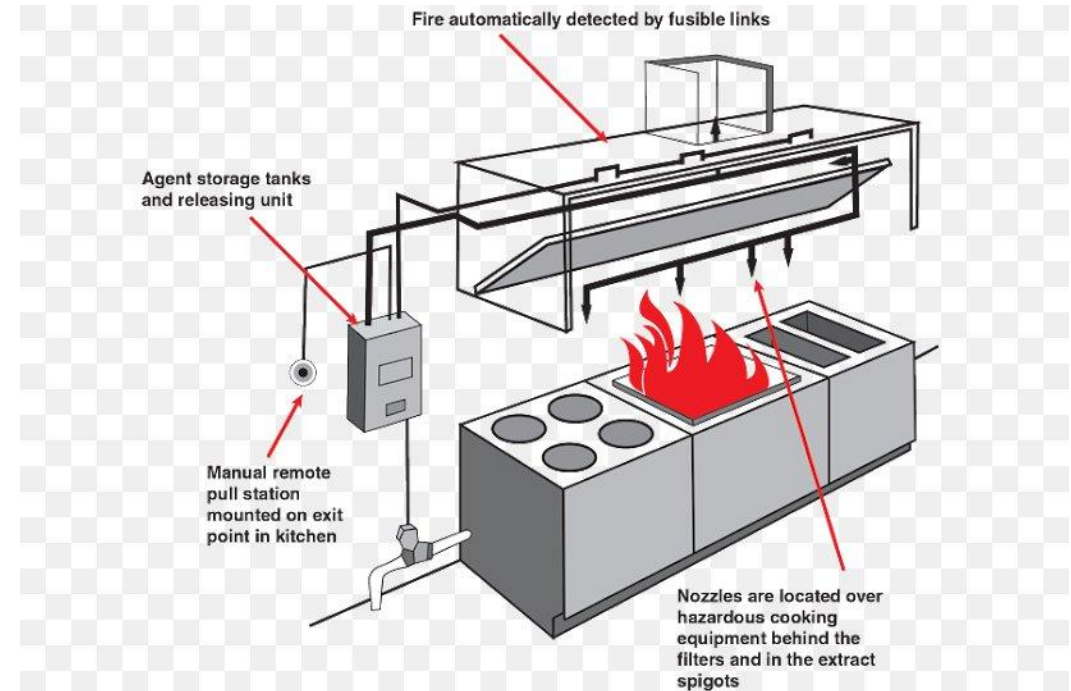
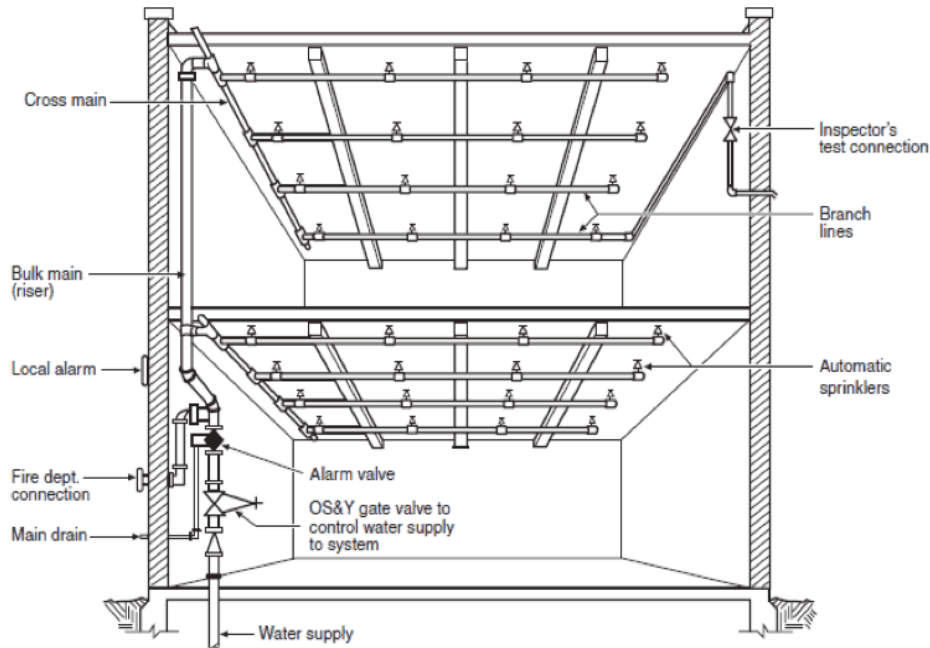




Cimarron Hills Fire Department Fire Protection Requirements by Type: Sprinkler and Fire Suppression Systems

Sprinkler Systems shall be installed per all IFC and NFPA Standards (13)

Commercial cooking/frying operations will require a hood/duct suppression system IAW NFPA 96





Cimarron Hills Fire Department Fire Protection Requirements by Type: Fire Department Connections

Fire Department Connections will be located 100' from a hydrant and be capped with plastic break away caps

FDC's will be marked with signage 1" white letters with a red background. A strobe device will be located over the FDC for water flow.





Cimarron Hills Fire Department Fire Protection Requirements by Type: Smoke Detection

Smoke detectors should be located according to NFPA and IFC. Most facilities that have sleeping arrangements will require them



For buildings with large air-handling systems, NFPA 90 requires full duct detection. This will be clearly marked and have an indicator/test switch





Cimarron Hills Fire Department Contractors Checklist: Certificate of Occupancy Requirements

Temporary Certificate of Occupancy

- Sprinkler System inspected, tested and approved by Fire
- Fire Alarm System inspected, tested and approved by Fire
- Commercial Hood system inspected, tested
- Key Provided for Knox Box
- Building Address posted

Full Certificate of Occupancy

- Fire Riser Room signage
- FDC Signage and Caps
- Fire Lanes marked and signs up
- Full Address posted in front
- Occupant Key in Knox Box
- Fire Extinguishers mounted
- Exit and Emergency Lighting