

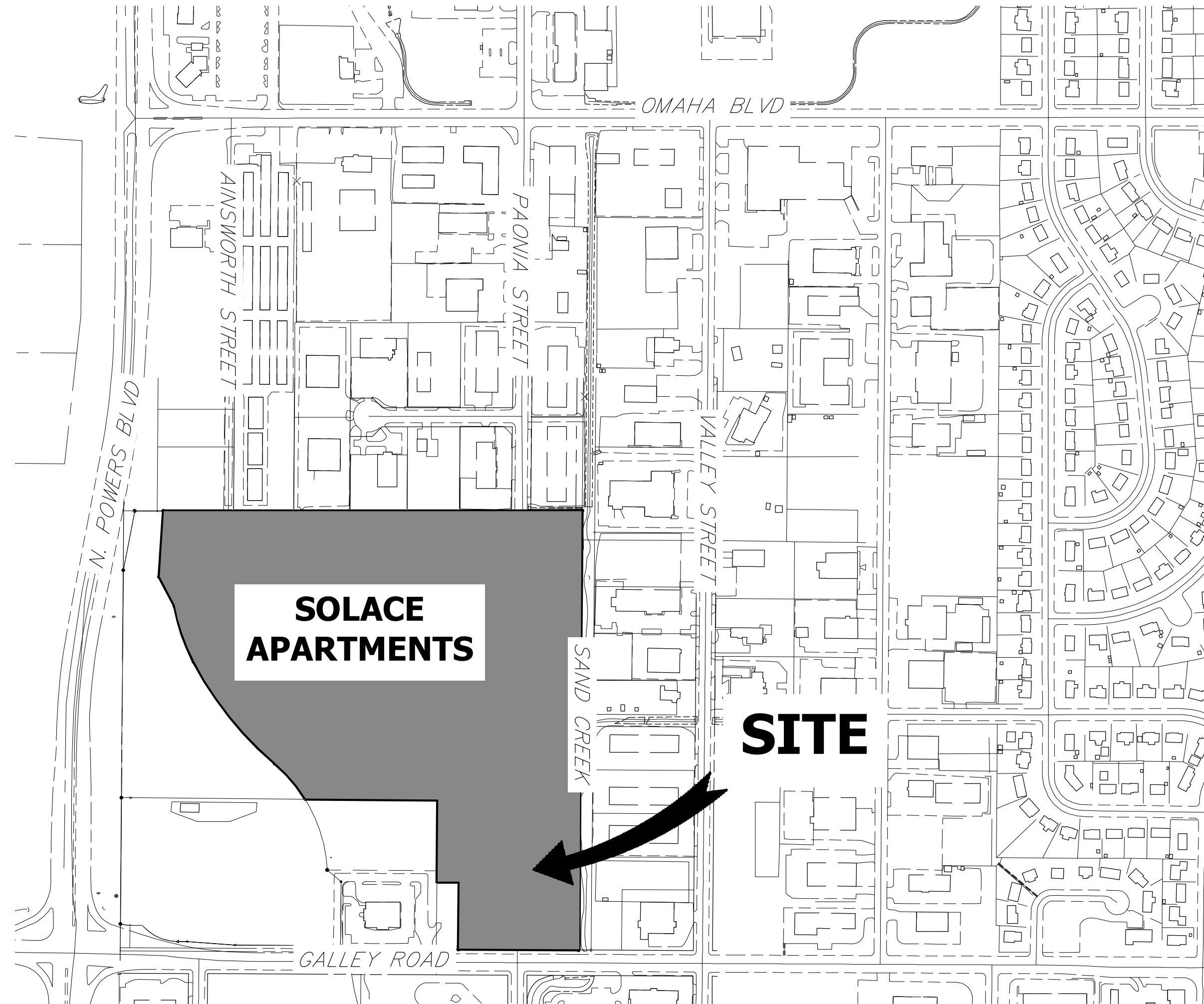
PAONIA STREET IMPROVEMENTS

A PORTION OF SECTION 7, TOWNSHIP 14 SOUTH, RANGE 65 WEST OF THE 6TH P.M. EL PASO COUNTY, COLORADO

PAONIA STREET IMPROVEMENTS

ABBREVIATIONS

AC	ACRE	FDP	FINAL DEVELOPMENT PLAN	PL	PROPERTY LINE
AD	ALGEBRAIC DIFFERENCE	FDR	FINAL DRAINAGE REPORT	PR	PROPOSED
AH	AHEAD	FES	FLARED END SECTION	PRC	POINT OF REVERSE CURVATURE
ARCH	ARCHITECT	FG	FINISHED GRADE	PT	POINT OF TANGENCY
ASCE	AMERICAN SOCIETY OF CIVIL ENGINEERS	FH	FIRE HYDRANT	PV	PLUG VALVE
ASSY	ASSEMBLY	FL	FLOWLINE	PVC	POLYVINYL CHLORIDE
AVE	AVENUE	FIL	FILING	R	RADIUS
BB	BOX BASE	FO	FIBER OPTIC CABLE	RCP	REINFORCED CONCRETE PIPE
BK	BACK	GB	GRADE BREAK	RD	ROAD
BNDY	BOUNDARY	GE	GAS EASEMENT	ROW	RIGHT OF WAY
BOP	BOTTOM OF PIPE	GIS	GEOGRAPHIC INFORMATION SYSTEM	RT	RIGHT
BOV	BLOW OFF VALVE	GL	GAS LINE	S	SOUTH
BFV	BUTTERFLY VALVE	GPS	GLOBAL POSITIONING SYSTEM	STE	STEEL
BLVD	BOULEVARD	GV	GATE VALVE	SAN	SANITARY SEWER
BW	BOTTOM OF WALL	HC	HANDICAP	SF	SQUARE FEET
C&G	CURB & GUTTER	HDC	HIGH DEFLECTION COUPLING	ST	STREET
CATV	CABLE TELEVISION	HDPE	HIGH DENSITY POLYETHYLENE	STA	STATION
CB	CATCH BASIN	HGL	HYDRAULIC GRADE LINE	STM	STORM SEWER
CBC	CONCRETE BOX CULVERT	HOA	HOME OWNERS ASSOCIATION	SY	SQUARE YARD
CDOT	COLORADO DEPARTMENT OF TRANSPORTATION	HP	HIGH POINT	SY-IN	SQUARE YARD INCH
CDS	CUL-DE-SAC	I	INLET	TB	THRUST BLOCK
CFS	CUBIC FEET PER SECOND	IE	IRRIGATION EASEMENT	TBC	TOP BACK OF CURB
CL	CENTER LINE	INT	INTERSECTION	TBW	TOP BACK OF WALK
CLOMR	CONDITIONAL LETTER OF MAP REVISION	INV	INVERT	TEL	TELEPHONE
CLR	CLEAR	IRR	IRRIGATION	TOA	TOP OF ASPHALT
CMP	CORRUGATED METAL PIPE	KB	KICK (THRUST) BLOCK	TOB	TOP OF BOX
CO	CLEAN OUT	LE	LANDSCAPE EASEMENT	TOC	TOP OF CURB OR CONCRETE
CONC	CONCRETE	LF	LINEAR FEET	TOP	TOP OF PIPE
CR	CIRCLE	LN	LANE	TW	TOP OF WALL
CSP	CORRUGATED STEEL PIPE	LQ	LETTER OF MAP REVISION	TYP	TYPICAL
CT	COURT	LP	LOW POINT	UFCD	URBAN DRAINAGE AND FLOOD CONTROL DISTRICT
CTRB	CONCRETE THRUST REDUCER BLOCK	LS	LUMP SUM	UE	UTILITY EASEMENT
CY	CUBIC YARD	LT	LEFT	U&DE	UTILITY & DRAINAGE EASEMENT
DBPS	DRAINAGE BASIN PLANNING STUDY	MAX	MAXIMUM	UGE	UNDERGROUND ELECTRIC
DE	DRAINAGE EASEMENT	MDDP	MASTER DEVELOPMENT DRAINAGE PLAN	VCP	VITRIFIED CLAY PIPE
DIA	DIAMETER	MH	MANHOLE	VPC	VERTICAL POINT OF CURVATURE
DIP	DUCTILE IRON PIPE	MIN	MINIMUM	VPI	VERTICAL POINT OF INTERSECTION
DR	DRIVE	N	NORTH	VPT	VERTICAL POINT OF TANGENCY
DRC	DESIGN REVIEW COMMITTEE	NRCP	NON-REINFORCED CONCRETE PIPE	VTC	VEHICLE TRACKING CONTROL
DU	DWELLING UNITS	ODP	OFFICIAL DEVELOPMENT PLAN	W	WEST
E	EAST	OHE	OVERHEAD ELECTRIC	WL	WATER LINE
EA	EACH	OHU	OVERHEAD UTILITY	WM	WATER MAIN
EGL	ENERGY GRADE LINE	PC	POINT OF CURVATURE	WRD	WATER RESOURCES DEPARTMENT
EL	ELEVATION	PCC	POINT OF COMPOUND CURVATURE	WS	WATER SURFACE
ELEC	ELECTRIC	PCR	POINT OF CURB RETURN	WSE	WATER SURFACE ELEVATION
EOA	EDGE OF ASPHALT	PDP	PRELIMINARY DEVELOPMENT PLAN	WTR	WATER
ESMT	EASEMENT	PE	PROFESSIONAL ENGINEER	YR	YEAR
EST	ESTIMATE	PI	POINT OF INTERSECTION		
EX	EXISTING	PKWY	PARKWAY		



VICINITY MAP
SCALE: 1" = 300'

SHEET INDEX

- 1 COVER SHEET
- 2 LEGEND & NOTES
- 3 TYPICAL SECTIONS
- 4 OVERALL UTILITY PLAN
- 5 ROADWAY PLAN AND PROFILE
- 6 SIGNAGE AND STRIPING PLAN

TOTAL 6

Review of the construction documents (street improvements) will be done with the final plat. Cursory comments have been provided.

APPLICANT/OWNER

JACKSON DEARBORN PARTNERS
404 S. WELLS ST.
SUITE 400
CHICAGO, IL 60607
P--734.216.2577

CIVIL ENGINEER

JR ENGINEERING
5475 TECH CENTER DR
SUITE 235
COLORADO SPRINGS, CO 80919
CONTACT: MIKE BRAMLETT
C--719.659.7679

PLANNER

N.E.S. INC.
619 N. CASCADE AVE
SUITE 200
COLORADO SPRINGS, CO 80903
CONTACT: TAMARA BAXTER
P--719.471.0073

ARCHITECT

LCM ARCHITECTS
819 S. WABASH AVE, FIFTH FLOOR
CHICAGO, IL 60605
P--312.995.5305

GEOTECHNICAL ENGINEER

CTL THOMPSON, INC
5170 MARK DABLING BLVD
COLORADO SPRINGS, CO 80918
P--719.528.8300



provide the appropriate EPC signature blocks when submitting these construction documents with the final plat.

UNTIL SUCH TIME AS THESE DRAWINGS ARE APPROVED BY THE APPROPRIATE REVIEWING AGENCIES, JR ENGINEERING APPROVES THEIR USES DESIGNATED BY WRITTEN AUTHORIZATION.

PREPARED FOR
JACKSON DEARBORN PARTNERS
404 S. WELLS ST.
SUITE 400
CHICAGO, ILL 60607
OFFICE PHONE (734) 216-2577

JR ENGINEERING
A Westman Company
Central 303-740-9883 • Colorado Springs 719-588-2583
Fort Collins 970-491-9888 • www.jrengineering.com

H-SCALE	V-SCALE	DATE	DESIGNED BY	DRAWN BY	CHECKED BY	No.	REVISION	BY	DATE
1"=300'	N/A	1/23/20	JRM	JRM					



Know what's below.
Call before you dig.

ENGINEER'S STATEMENT

PREPARED FOR
MIKE A. BRAMLETT
COLORADO PROFESSIONAL ENGINEER NO. 12345
FOR AND ON BEHALF OF JR ENGINEERING, LLC

FOR INFORMATION ONLY

DATE _____

PAONIA STREET IMPROVEMENTS
COVER SHEET

SHEET 1 OF 6

JOB NO. 25174.00

LAYER LINETYPE LEGEND

Table with columns for EXISTING and PROPOSED linetypes. Rows include MATCH LINE, SECTION LINE, PROPERTY LINE, EASEMENT LINE, RIGHT OF WAY, CENTERLINE, FENCE, GUARDRAIL, CABLE TV, ELECTRIC, FIBER OPTIC, GAS MAIN, IRRIGATION MAIN, OVERHEAD UTILITY, SANITARY SEWER, STORM DRAIN, TELEPHONE, WATER MAIN, SWALE/WATERWAY FLOWLINE, DIVERSION DITCH, TOP OF SLOPE, TOE OF SLOPE, 100 YEAR FLOODPLAIN, 5 YEAR HGL, 100 YEAR HGL.

UTILITIES LEGEND

Legend for utilities: STORM SEWER, SANITARY SEWER, WATER LINE, GAS LINE, DRY UTILITIES. Includes symbols for manholes, valves, markers, and various pipe types.

MONUMENTATION LEGEND

Legend for monumentation: ALUMINUM CAP, BRASS CAP, BENCHMARK, CROSS, MONUMENT (SET, FOUND, ALTERNATE 1-7), NAIL & WASHER, PANEL, ROW MONUMENT, ROW MARKER, SECTION CORNER, QUARTER-SECTION CORNER, SECTION CENTER, CONTROL/TRVERSE POINT.

DRAINAGE REPORT PLANS

Legend for drainage report plans: KEY, BASIN DESIGNATION (NO COEFFICIENT, 1 COEFFICIENT, 2 COEFFICIENTS), ANALYSIS POINT IDENTIFIER, BASIN DESIGNATION (HISTORIC), BASIN DESIGNATION (DEVELOPED), SUB-BASIN DESIGNATION (DEVELOPED), DRAINAGE PIPE IDENTIFIER, DRAINAGE POINT IDENTIFIER (HEXAGONAL, TRIANGULAR), SWMM DESIGNATION 1-4.

LANDSCAPE LEGEND

Legend for landscape: TREE - CONIFEROUS, TREE - DECIDUOUS, SHRUB/BUSH, SHRUBS AND BUSHES, IRRIGATION BOX, IRRIGATION SPRINKLER, IRRIGATION VALVE, BOLLARD, FLAGPOLE.

STANDARD NOTES FOR EL PASO COUNTY CONSTRUCTION PLANS

- 1. ALL DRAINAGE AND ROADWAY CONSTRUCTION SHALL MEET THE STANDARDS AND SPECIFICATIONS OF THE CITY OF COLORADO SPRINGS/EL PASO COUNTY DRAINAGE CRITERIA MANUAL, VOLUMES 1 AND 2, AND THE EL PASO COUNTY ENGINEERING CRITERIA MANUAL.
2. CONTRACTOR SHALL BE RESPONSIBLE FOR THE NOTIFICATION AND FIELD NOTIFICATION OF ALL EXISTING UTILITIES...
3. CONTRACTOR SHALL KEEP A COPY OF THESE APPROVED PLANS...
4. NOTWITHSTANDING ANYTHING DEPICTED IN THESE PLANS...
5. IT IS THE DESIGN ENGINEER'S RESPONSIBILITY TO ACCURATELY SHOW EXISTING CONDITIONS...
6. CONTRACTOR SHALL SCHEDULE A PRE-CONSTRUCTION MEETING...
7. IT IS THE CONTRACTOR'S RESPONSIBILITY TO UNDERSTAND THE REQUIREMENTS OF ALL JURISDICTIONAL AGENCIES...
8. CONTRACTOR SHALL NOT DEVIATE FROM THE PLANS WITHOUT FIRST OBTAINING WRITTEN APPROVAL...
9. CONTRACTOR SHALL COORDINATE GEOTECHNICAL TESTING PER EOM STANDARDS...
10. ALL CONSTRUCTION TRAFFIC MUST ENTER/EXIT THE SITE AT APPROVED CONSTRUCTION ACCESS POINTS.
11. SIGHT VISIBILITY TRIANGLES IDENTIFIED IN THE PLANS, SHALL BE PROVIDED AT ALL INTERSECTIONS.
12. SIGNING AND STRIPING SHALL COMPLY WITH EL PASO COUNTY DEPARTMENT OF PUBLIC WORKS AND MUTCD CRITERIA.
13. CONTRACTOR SHALL OBTAIN ANY PERMITS REQUIRED BY EL PASO COUNTY DEPARTMENT OF PUBLIC WORKS...
14. THE LIMITS OF CONSTRUCTION SHALL REMAIN WITHIN THE PROPERTY LINE UNLESS OTHERWISE NOTED.

standard note #9 is missing. Please include the following standard note: All storm drain pipe shall be Class III RCP unless otherwise noted and approved by PCD.

SIGNING AND STRIPING NOTES

- 1. ALL SIGNS AND PAVEMENT MARKING SHALL BE IN COMPLIANCE WITH THE CURRENT MANUAL ON UNIFORM TRAFFIC CONTROL DEVICES (MUTCD).
2. REMOVAL OF EXISTING PAVEMENT MARKINGS SHALL BE ACCOMPLISHED BY A METHOD THAT DOES NOT MATERIALLY DAMAGE THE PAVEMENT.
3. ANY DEVIATION FROM THE STRIPING AND SIGNING PLAN SHALL BE APPROVED BY EL PASO COUNTY PLANNING AND COMMUNITY DEVELOPMENT.
4. ALL SIGNS SHOWN ON THE SIGNING AND STRIPING PLAN SHALL BE NEW SIGNS.
5. STREET NAME AND REGULATORY STOP SIGNS SHALL BE ON THE SAME POST AT INTERSECTIONS.
6. ALL REMOVED SIGNS SHALL BE DISPOSED OF IN A PROPER MANNER BY THE CONTRACTOR.
7. ALL STREET NAME SIGNS SHALL BE "D" SERIES LETTERS...
8. ALL TRAFFIC SIGNS SHALL HAVE A MINIMUM HIGH INTENSITY PRISMATIC GRADE SHEETING.
9. ALL LOCAL RESIDENTIAL STREET SIGNS SHALL BE MOUNTED ON A 1.75" X 1.75" SQUARE TUBE SIGN POST...
10. ALL SIGNS SHALL BE SINGLE SHEET ALUMINUM WITH 0.100" THICKNESS.
11. ALL LIMIT LINES/STOP LINES, CROSSWALK LINES, PAVEMENT LEGENDS, AND ARROWS SHALL BE A MINIMUM 125 MIL THICKNESS...
12. ALL LONGITUDINAL LINES SHALL BE A MINIMUM 15MIL THICKNESS EPOXY PAINT.
13. THE CONTRACTOR SHALL NOTIFY EL PASO COUNTY PLANNING AND COMMUNITY DEVELOPMENT (719) 520-6819 PRIOR TO AND UPON COMPLETION OF THE SIGNING AND STRIPING.
14. THE CONTRACTOR SHALL OBTAIN A WORK IN THE RIGHT OF WAY PERMIT FROM THE EL PASO COUNTY DEPARTMENT OF PUBLIC WORKS (DPW) PRIOR TO ANY SIGNAGE OR STRIPING WORK WITHIN AN EXISTING EL PASO COUNTY ROADWAY.



ENGINEER'S STATEMENT FOR INFORMATION ONLY. PREPARED BY MIKE A. BR... COLORADO P... FOR AND ON BEHALF OF JR ENGINEERING, LLC. DATE

UNTIL SUCH TIME AS THESE DRAWINGS ARE APPROVED BY THE APPROPRIATE REVIEWING AGENCIES, JR ENGINEERING APPROVES THEIR USE AS DESIGNATED BY WRITTEN AUTHORIZATION.

JACKSON DEARBORN PARTNERS 404 S. WELLS ST. SUITE 400 CHICAGO, ILL 60607 OFFICE PHONE (734) 216-2577

J.R. ENGINEERING A Western Company Central 303-740-9888 • Colorado Springs 719-588-2683 Fort Collins 970-491-9888 • www.jrengineering.com

Table with columns: No., REVISION, DATE, BY. Rows for revisions.

Table with columns: H-SCALE, V-SCALE, N/A, DATE, DESIGNED BY, DRAWN BY, CHECKED BY, JRM, JRM.

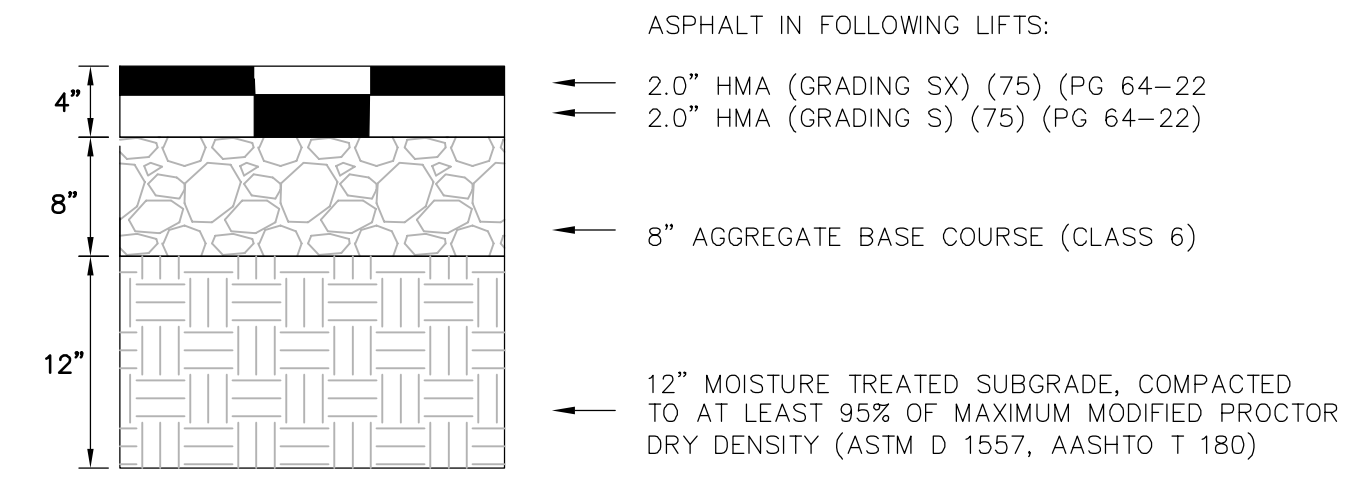
PAONIA STREET IMPROVEMENTS LEGEND & NOTES SHEET 2 OF 6 JOB NO. 25174.00

X:\25174\00\Drawings\Sheet\Improvements\25174\00\01.dwg, LG01, 1/23/20, 1:06:40 PM, Maleki

UNTIL SUCH TIME AS THESE DRAWINGS ARE APPROVED BY THE APPROPRIATE REVIEWING AGENCIES, JR ENGINEERING APPROVES THEIR USE FOR PURPOSES DESIGNATED BY WRITTEN AUTHORIZATION.

PREPARED FOR
JACKSON DEARBORN PARTNERS
 404 S. WELLS ST.
 SUITE 400
 CHICAGO, ILL. 60607
 OFFICE PHONE (734) 216-2577

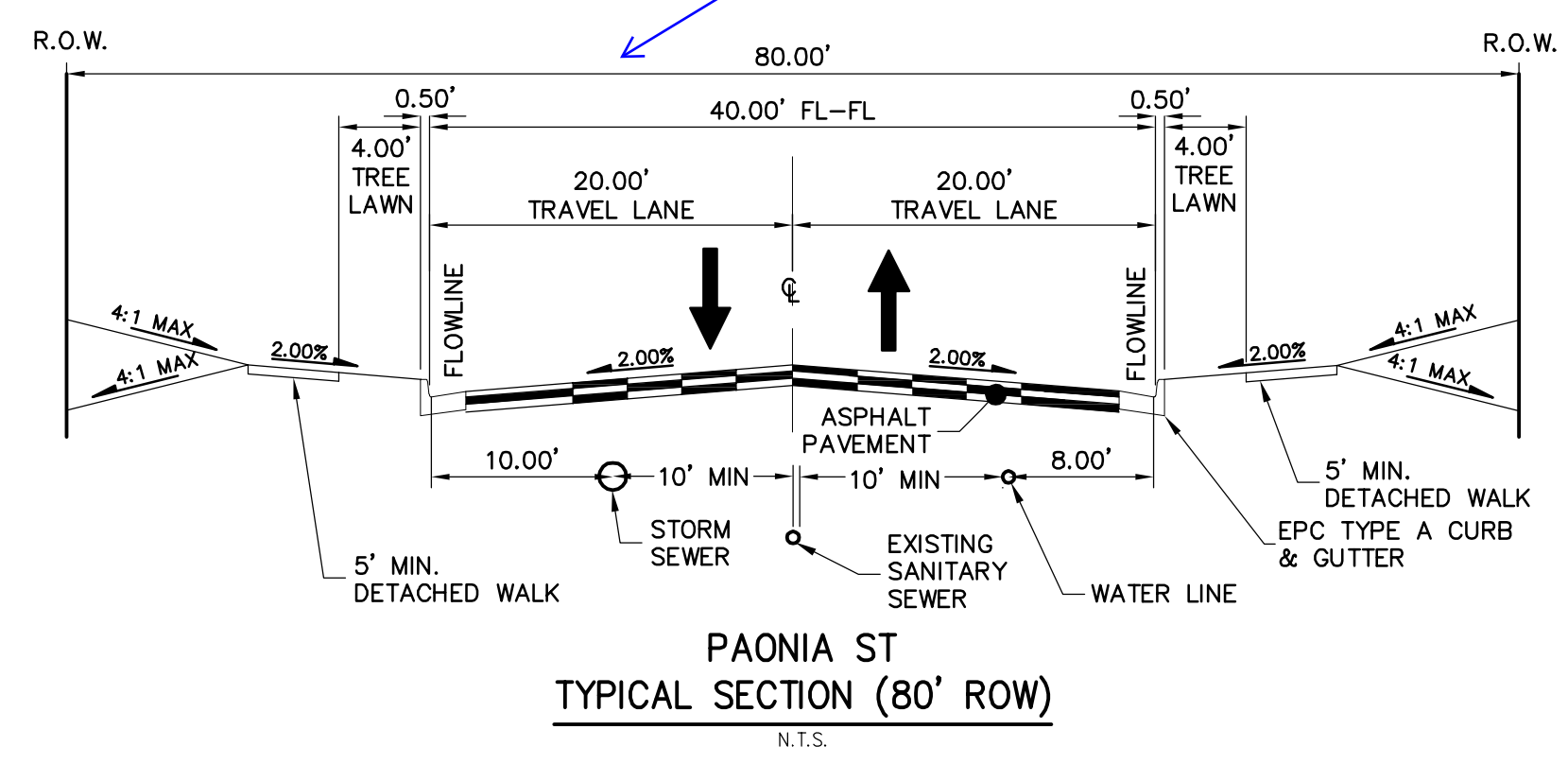
J.R. ENGINEERING
 A Westman Company
 Centennial 303-740-9883 • Colorado Springs 719-588-2583
 Fort Collins 970-491-9888 • www.jrengineering.com



PROPOSED ROADWAY PAVEMENT SECTION
 N.T.S.

FINAL PAVEMENT SECTION SHALL BE PER GEOTECHNICAL RECOMMENDATIONS WITHIN THE APPROVED PAVEMENT DESIGN REPORT.

See comments on the preliminary plan and update accordingly.



BY	DATE	No.	REVISION

H-SCALE	N/A
V-SCALE	N/A
DATE	1/23/20
DESIGNED BY	JRM
DRAWN BY	JRM
CHECKED BY	

PAONIA STREET IMPROVEMENTS
TYPICAL SECTIONS

SHEET **3** OF **6**
 JOB NO. **25174.00**

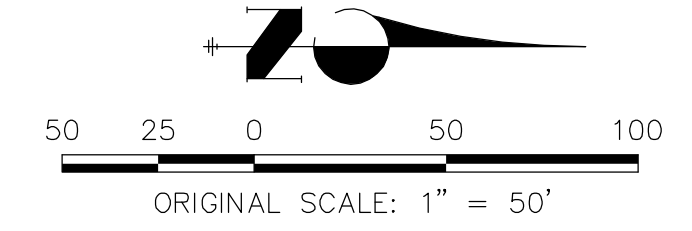
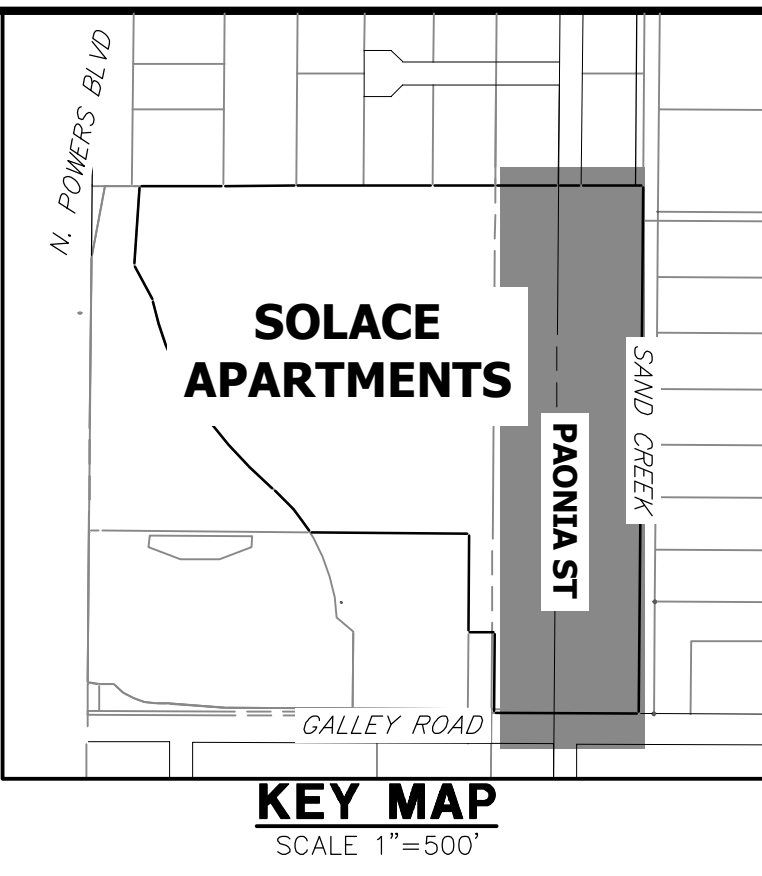
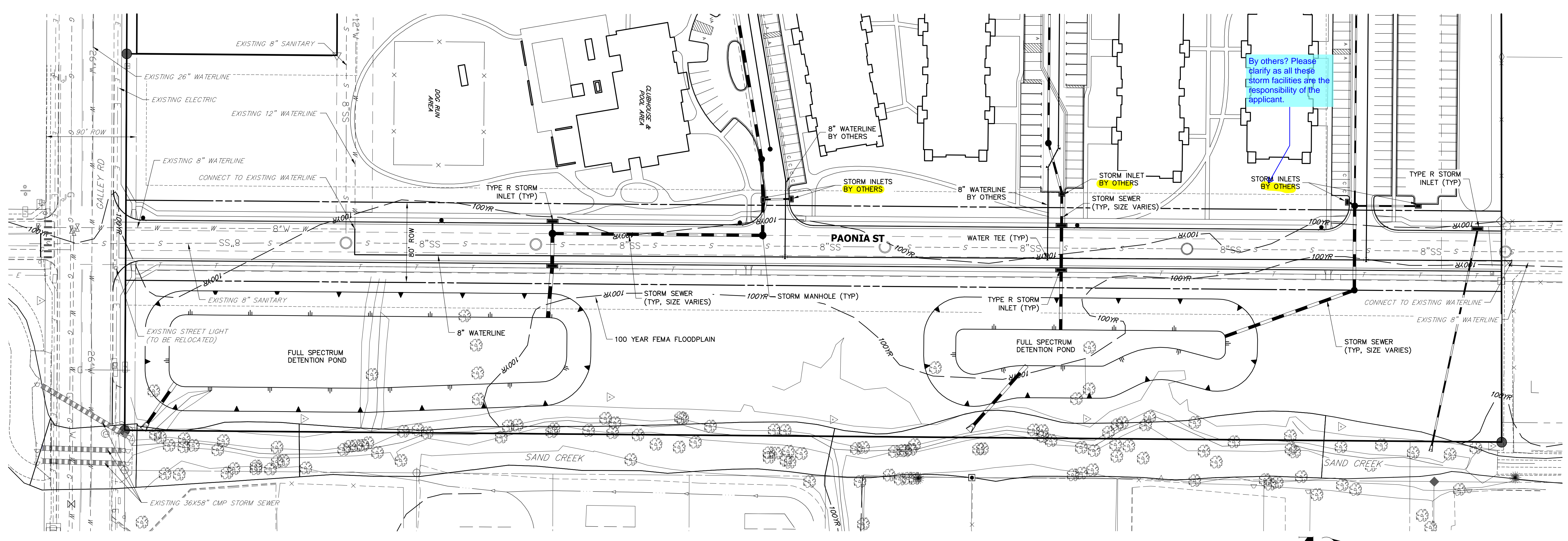
ENGINEER'S STATEMENT
 PREPARED FOR
 MIKE A. BR...
 COLORADO P...
 FOR AND ON BEHALF OF JR ENGINEERING, LLC

FOR INFORMATION ONLY

DATE




X:\251000\2517400\Drawings\Sheet\Drawings\Paonia_Sheet_Improvements\2517400700.dwg, TX01, 1/23/2020, 1:06:59 PM, Mahed



NOTES
1. SEE SHEET 3 FOR TYPICAL SECTION.

ENGINEER'S STATEMENT
PREPARED FOR
FOR INFORMATION ONLY
MIKE A. BR...
COLORADO P...
FOR AND ON BEHALF OF JR ENGINEERING, LLC

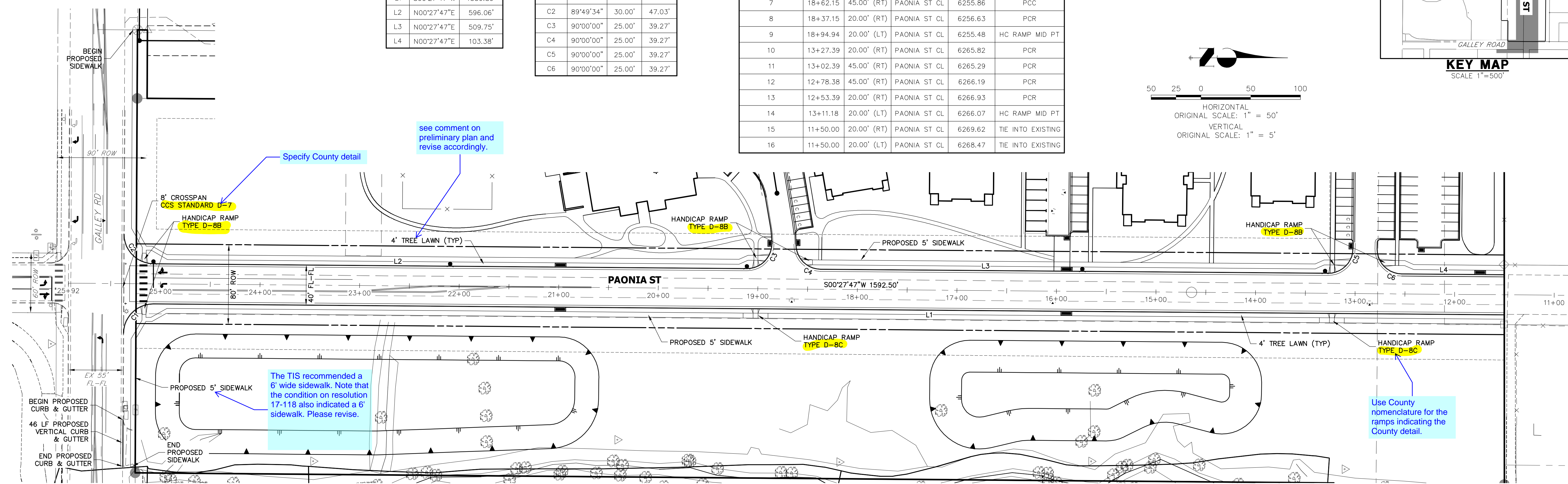
UNTIL SUCH TIME AS THESE DRAWINGS ARE APPROVED BY THE APPROPRIATE REVIEWING AGENCIES, JR ENGINEERING APPROVES THEIR USE FOR THE PURPOSES DESIGNATED BY WRITTEN AUTHORIZATION.
PREPARED FOR
JACKSON DEARBORN PARTNERS
404 S. WELLS ST.
SUITE 400
CHICAGO, ILL. 60607
OFFICE PHONE
(734) 216-2577

J.R. ENGINEERING
A Westman Company

Central 303-740-0888 • Colorado Springs 719-588-2683
Fort Collins 970-491-9888 • www.jrengineering.com

BY	DATE

H-SCALE	V-SCALE	DATE	DESIGNED BY	DRAWN BY	CHECKED BY
1"=50'	N/A	1/23/20	JRM	JRM	

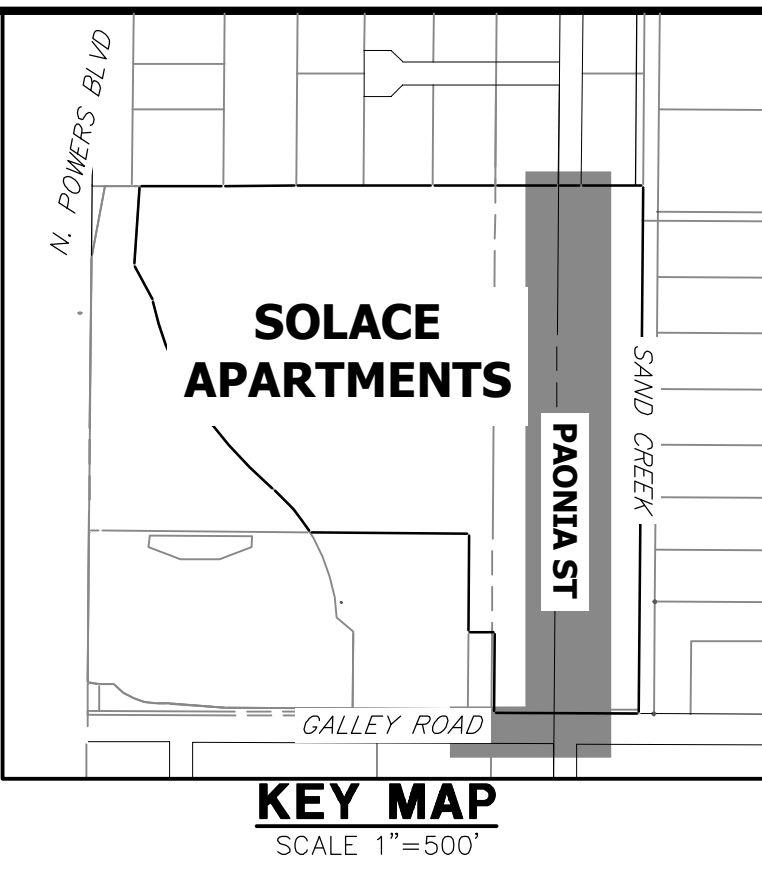
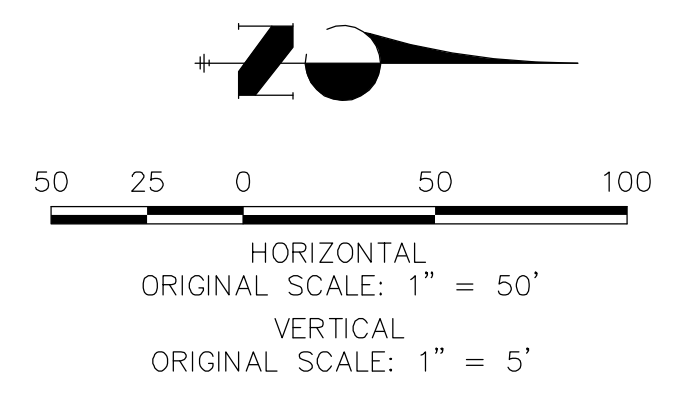
PAONIA STREET IMPROVEMENTS
OVERALL UTILITY PLAN
SHEET 4 OF 6
JOB NO. 25174.00



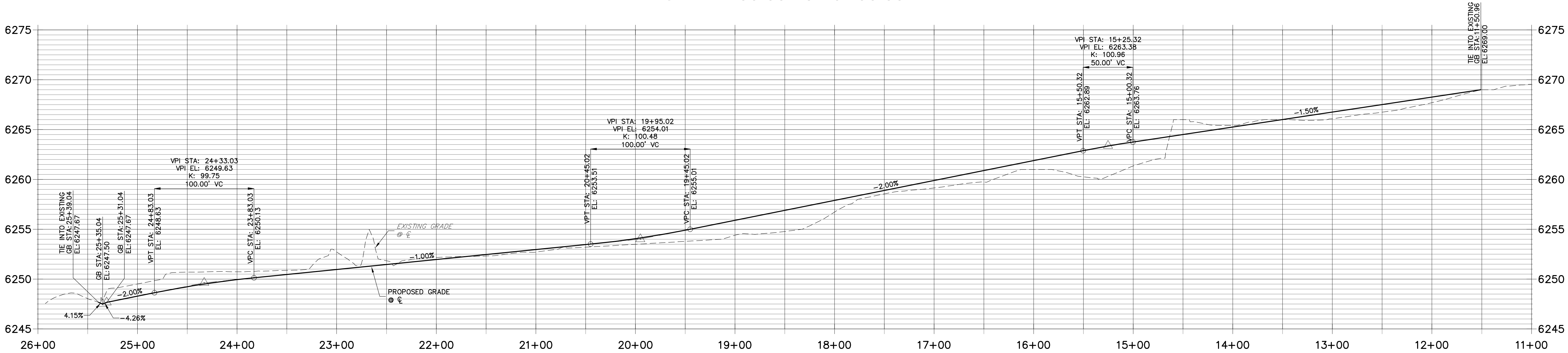
LINE	BEARING	DISTANCE
L1	S00°27'47"W	1356.89'
L2	N00°27'47"E	596.06'
L3	N00°27'47"E	509.75'
L4	N00°27'47"E	103.38'

CURVE	DELTA	RADIUS	LENGTH
C1	90°10'26"	30.00'	47.21'
C2	89°49'34"	30.00'	47.03'
C3	90°00'00"	25.00'	39.27'
C4	90°00'00"	25.00'	39.27'
C5	90°00'00"	25.00'	39.27'
C6	90°00'00"	25.00'	39.27'

POINT NUMBER	STATION	OFFSET	ALIGNMENT	ELEVATION	DESCRIPTION
1	25+37.20	49.91' (RT)	PAONIA ST CL	6247.83	TIE INTO EXISTING
2	25+07.20	20.00' (RT)	PAONIA ST CL	6247.62	PCR
3	25+36.89	50.09' (LT)	PAONIA ST CL	6247.62	TIE INTO EXISTING
4	25+06.89	20.00' (LT)	PAONIA ST CL	6247.62	PCR
5	19+11.15	20.00' (RT)	PAONIA ST CL	6255.16	PCR
6	18+86.15	45.00' (RT)	PAONIA ST CL	6255.64	PCC
7	18+62.15	45.00' (RT)	PAONIA ST CL	6255.86	PCC
8	18+37.15	20.00' (RT)	PAONIA ST CL	6256.63	PCR
9	18+94.94	20.00' (LT)	PAONIA ST CL	6255.48	HC RAMP MID PT
10	13+27.39	20.00' (RT)	PAONIA ST CL	6265.82	PCR
11	13+02.39	45.00' (RT)	PAONIA ST CL	6265.29	PCR
12	12+78.38	45.00' (RT)	PAONIA ST CL	6266.19	PCR
13	12+53.39	20.00' (RT)	PAONIA ST CL	6266.93	PCR
14	13+11.18	20.00' (LT)	PAONIA ST CL	6266.07	HC RAMP MID PT
15	11+50.00	20.00' (RT)	PAONIA ST CL	6269.62	TIE INTO EXISTING
16	11+50.00	20.00' (LT)	PAONIA ST CL	6268.47	TIE INTO EXISTING



**PAONIA ST CL PROFILE
STA 11+00.00 TO 26+00.00**



- NOTES**
1. ALL PROFILE ELEVATIONS ARE CENTERLINE UNLESS OTHERWISE NOTED.
 2. ALL POINT TABULATIONS ARE FLOWLINE UNLESS OTHERWISE NOTED.
 3. SEE SHEET 2 FOR LEGEND.
 4. SEE SHEETS 3 FOR TYPICAL STREET SECTIONS.
 5. SIDEWALK SHALL BE A DEPTH OF 6 INCHES.

ENGINEER'S STATEMENT
FOR INFORMATION ONLY

PREPARED BY: MIKE A. BR...
DATE: ...



UNLESS SUCH TIME AS THESE DRAWINGS ARE APPROVED BY THE AGENCIES, OR ENGINEERING APPROVES THEIR USES DESIGNATED BY WRITTEN AUTHORIZATION.

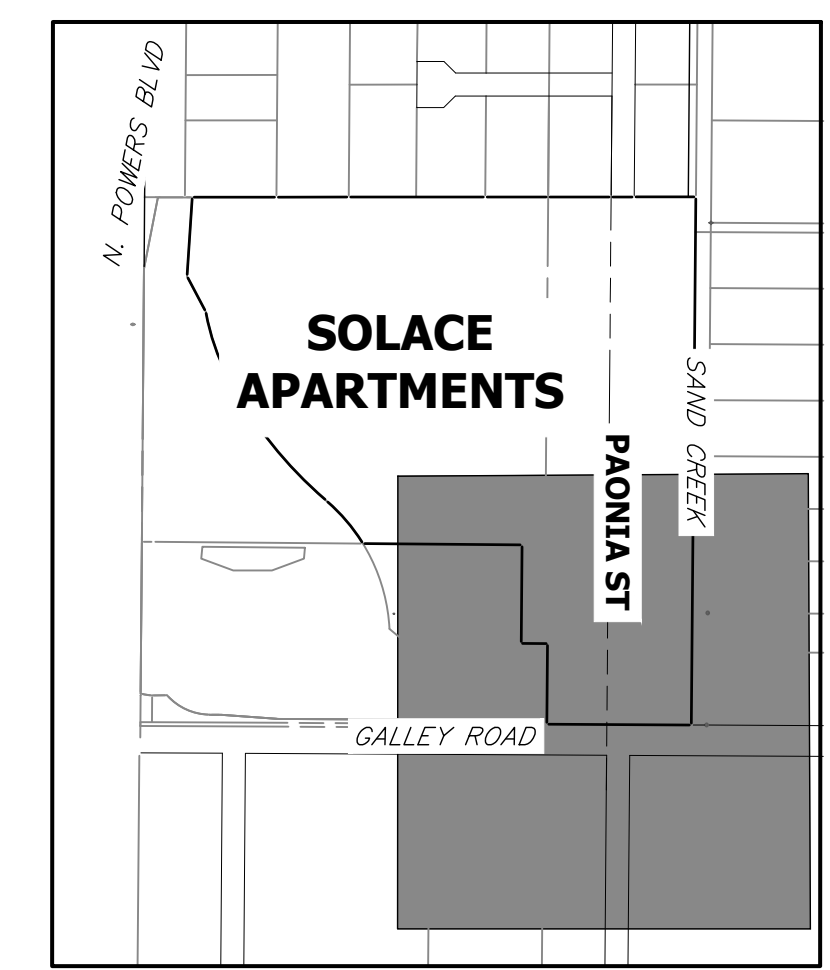
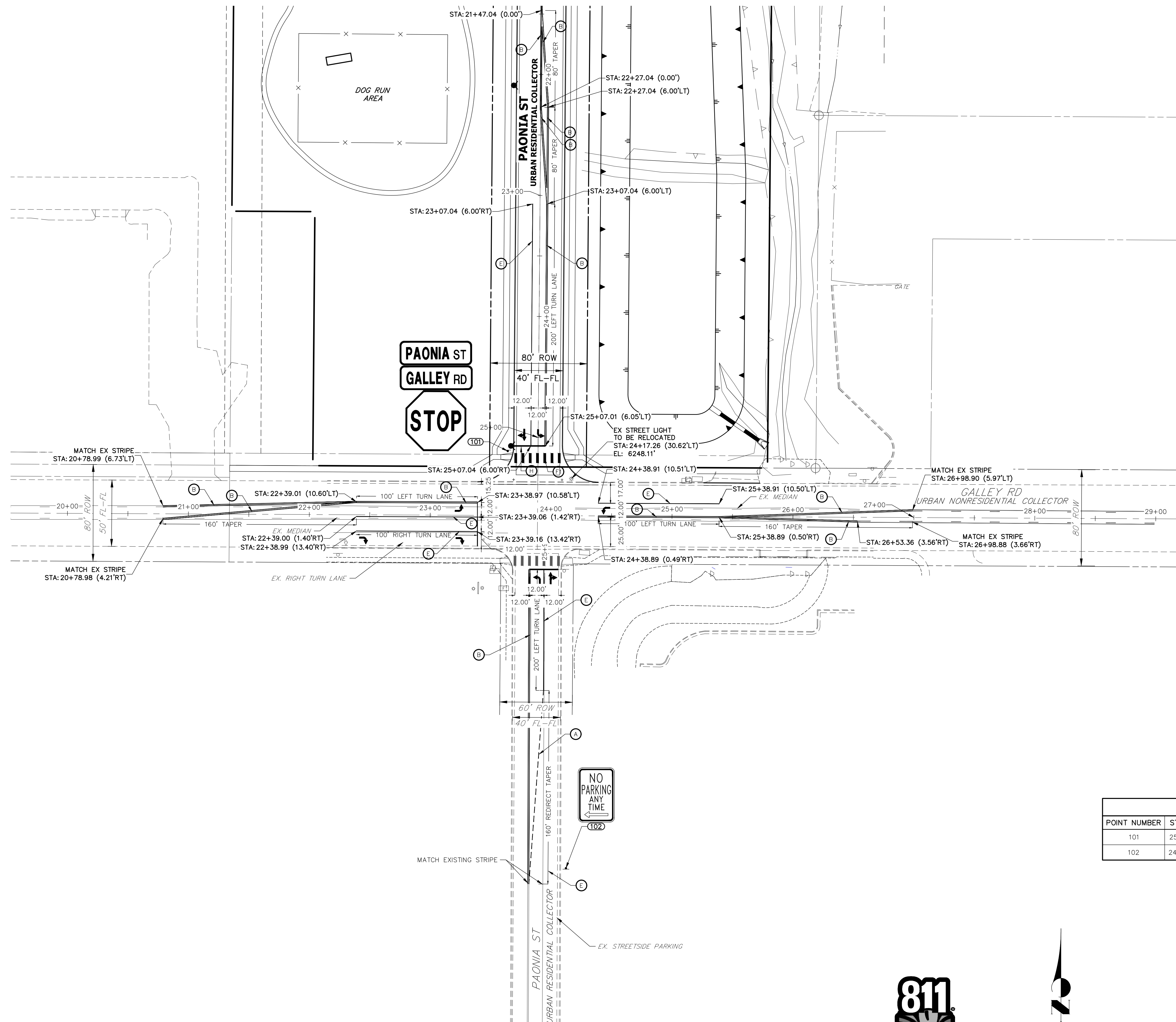
JACKSON DEARBORN PARTNERS
404 S. WELLS ST.
SUITE 400
CHICAGO, ILL. 60607
OFFICE PHONE (734) 216-2577

J.R. ENGINEERING
A Western Company
Central 303-740-0888 • Colorado Springs 719-588-2683
Fort Collins 970-491-9888 • www.jrengineering.com

No.	REVISION	DATE	BY

PAONIA STREET IMPROVEMENTS
ROADWAY PLAN AND PROFILE

SHEET 5 OF 6
JOB NO. 25174.00



KEY MAP
SCALE 1"=500'

LEGEND

- PROPOSED SIGN
 - EXISTING SIGN
 - CDOT DELINEATOR TYPE I (CRYSTAL)
 - ⊙ CDOT DELINEATOR TYPE II (CRYSTAL)
 - ⊙ CDOT DELINEATOR TYPE II (YELLOW)
 - ⊙ CDOT DELINEATOR TYPE II (YELLOW) BACK TO BACK
 - ⊙ EXISTING STRIPE TO REMAIN
 - ⊙ SEE DEMOLITION PLAN FOR EX STRIPING REMOVAL
 - ⊙ PROPOSED STRIPE
 - ⊙ TABULATION KEY
 - ⊙ LANE LINE - 4" WIDE X 10' LONG, 30' GAP, WHITE EPOXY
 - ⊙ CENTER LINE - 4" WIDE, SOLID DOUBLE YELLOW, 4" SEPARATION, EPOXY
 - ⊙ CENTER LINE - 4" WIDE, SOLID YELLOW OUTSIDE, INSIDE 4" X 10' LONG, 30' GAP, YELLOW EPOXY
 - ⊙ CENTER LINE - 4" WIDE, SOLID YELLOW, EPOXY
 - ⊙ EDGE LINE - 4" WIDE, SOLID WHITE EPOXY
 - ⊙ CROSSWALK - 18"X10' SOLID WHITE PREFORMED THERMO-PLASTIC (MIN. 90 MIL THICKNESS)
 - ⊙ 18" WIDE CROSSWALK PREFORMED THERMOPLASTIC
 - ⊙ LANE DROP LINE - 4" WIDE X 3' LONG, 9' GAP, WHITE EPOXY
 - ⊙ STOP BAR - 2'XLANE WIDTH SOLID WHITE PREFORMED THERMO-PLASTIC (MIN. 90 MIL THICKNESS)
- SYMBOLS (ARROWS, "ONLY") - SHALL BE PREFORMED THERMO-PLASTIC (MIN. 90 MIL THICKNESS)

SIGNAGE TABULATION						
POINT NUMBER	STATION	OFFSET	ALIGNMENT	ELEVATION	NOTES	DESCRIPTION
101	25+11.47	25.07' (RT)	PAONIA ST CL	6248.12		36X36 R-1
102	24+07.27	291.20' (RT)	GALLEY RD CL	6248.12		18" X 12" NO PARKING



ENGINEER'S STATEMENT
PREPARED FOR INFORMATION ONLY
DATE

UNTIL SUCH TIME AS THESE DRAWINGS ARE APPROVED BY THE APPROPRIATE REVIEWING AGENCIES, JR ENGINEERING APPROVES THEIR USES DESIGNATED BY WRITTEN AUTHORIZATION.

PREPARED FOR
JACKSON DEARBORN PARTNERS
404 S. WELLS ST.
SUITE 400
CHICAGO, ILL. 60607
OFFICE PHONE (734) 216-2577

J.R. ENGINEERING
A Westman Company
Central 303-740-9888 • Colorado Springs 719-588-2583
Fort Collins 970-491-9888 • www.jrengineering.com

No.	REVISION	BY	DATE	1"=40'	
				H-SCALE	V-SCALE
				NA	1/20/20
				CJD	CJD
				CJD	CJD


PAONIA STREET IMPROVEMENTS
SIGNAGE AND STRIPING PLAN

X:\25174000\Drawings\Sheet\Paonia Street Improvements\25174005\01.dwg, 24.06.2020 3:41:21 PM, G.E.


Construction Drawings-Paoinia Prelim_V1.pdf Markup Summary

Highlight (9)


STORM INLETS
BY OTHERS

Subject: Highlight
Page Label: 4
Lock: Locked
Author: Daniel Torres
Date: 4/1/2020 2:21:07 PM
Status:
Color: 
Layer:
Space:


STORM INLET
BY OTHERS
STORM SEWER
TYPE SIZE VAR

Subject: Highlight
Page Label: 4
Lock: Locked
Author: Daniel Torres
Date: 4/1/2020 2:21:08 PM
Status:
Color: 
Layer:
Space:


STORM INLETS
BY OTHERS

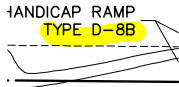
Subject: Highlight
Page Label: 4
Lock: Locked
Author: Daniel Torres
Date: 4/1/2020 2:21:09 PM
Status:
Color: 
Layer:
Space:

HANDICAP RAMP
TYPE D-8C

Subject: Highlight
Page Label: 5
Lock: Locked
Author: Daniel Torres
Date: 4/1/2020 2:21:10 PM
Status:
Color: 
Layer:
Space:

HANDICAP RAMP
TYPE D-8B

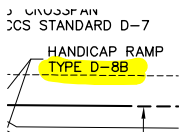
Subject: Highlight
Page Label: 5
Lock: Locked
Author: Daniel Torres
Date: 4/1/2020 2:21:11 PM
Status:
Color: 
Layer:
Space:



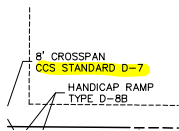
Subject: Highlight
Page Label: 5
Lock: Locked
Author: Daniel Torres
Date: 4/1/2020 2:21:13 PM
Status:
Color: ■
Layer:
Space:



Subject: Highlight
Page Label: 5
Lock: Locked
Author: Daniel Torres
Date: 4/1/2020 2:21:14 PM
Status:
Color: ■
Layer:
Space:



Subject: Highlight
Page Label: 5
Lock: Locked
Author: Daniel Torres
Date: 4/1/2020 2:21:15 PM
Status:
Color: ■
Layer:
Space:



Subject: Highlight
Page Label: 5
Lock: Locked
Author: Daniel Torres
Date: 4/1/2020 2:21:16 PM
Status:
Color: ■
Layer:
Space:

Text Box (2)



Subject: Text Box
Page Label: 1
Lock: Locked
Author: Daniel Torres
Date: 4/1/2020 2:21:01 PM
Status:
Color: ■
Layer:
Space:

Review of the construction documents (street improvements) will be done with the final plat. Cursory comments have been provided.



Subject: Text Box
Page Label: 1
Lock: Locked
Author: Daniel Torres
Date: 4/1/2020 2:21:02 PM
Status:
Color: ■
Layer:
Space:

provide the appropriate EPC signature blocks when submitting these construction documents with the final plat.