

AG2010

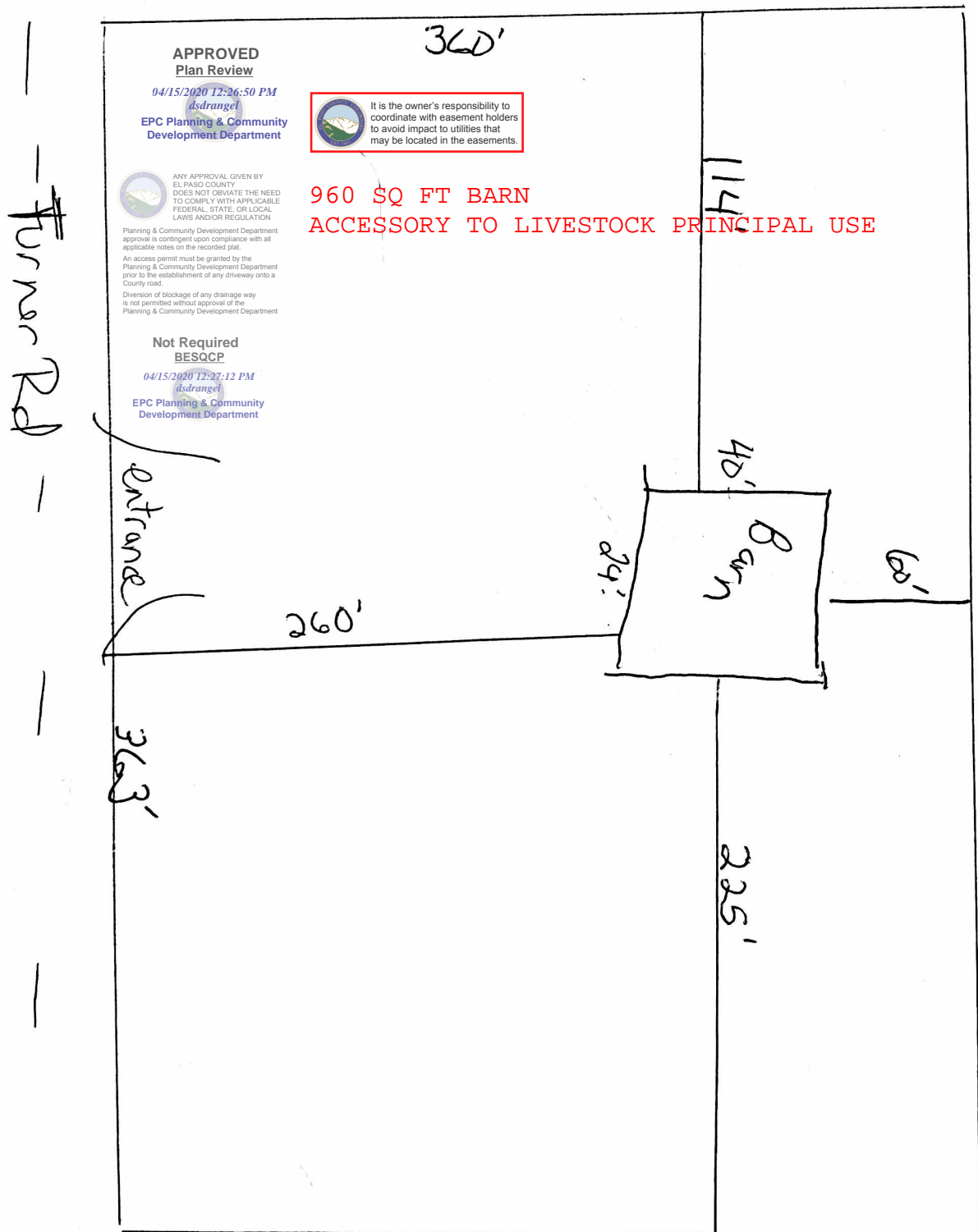
4510 TURNER RD

71200-02-001

LOT 1 BLK 2 MOUNT HERMAN ESTATES

PLAT 1718

RR-2.5



APPROVED  
Plan Review

04/15/2020 12:26:50 PM  
dsdrangel  
EPC Planning & Community  
Development Department



It is the owner's responsibility to coordinate with easement holders to avoid impact to utilities that may be located in the easements.



ANY APPROVAL GIVEN BY EL PASO COUNTY DOES NOT OBTAIN THE NEED TO COMPLY WITH APPLICABLE FEDERAL, STATE, OR LOCAL LAWS AND/OR REGULATION

Planning & Community Development Department approval is contingent upon compliance with all applicable notes on the recorded plat.

An access permit must be granted by the Planning & Community Development Department prior to the establishment of any driveway onto a County road.

Diversion of blockage of any drainage way is not permitted without approval of the Planning & Community Development Department

960 SQ FT BARN  
ACCESSORY TO LIVESTOCK PRINCIPAL USE

Not Required  
BESQCP

04/15/2020 12:27:12 PM  
dsdrangel  
EPC Planning & Community  
Development Department