

**GENERAL SITE NOTES**

- CONTRACTOR RESPONSIBLE FOR COORDINATING AND INSTALLING ALL SLEEVING REQUIRED FOR LANDSCAPE AND IRRIGATION CONSTRUCTION. COORDINATE WITH GENERAL CONTRACTOR. ALL PLANTING AREAS SHALL RECEIVE SLEEVING. REFER TO PLANTING PLAN FOR ADDITIONAL INFORMATION.
- THE CONTRACTOR IS SPECIFICALLY CAUTIONED THAT THE LOCATION AND/OR ELEVATION OF EXISTING UTILITIES, AS SHOWN ON THESE PLANS, IS BASED ON RECORDS OF THE VARIOUS UTILITY COMPANIES AND, WHERE POSSIBLE, MEASUREMENTS TAKEN IN THE FIELD. THE INFORMATION IS NOT TO BE RELIED UPON AS BEING EXACT OR COMPLETE. THE CONTRACTOR MUST CALL THE LOCAL UTILITY LOCATION CENTER AT LEAST 48 HOURS BEFORE ANY EXCAVATION TO REQUEST EXACT FIELD LOCATIONS OF THE UTILITIES. PRIOR TO CONSTRUCTION, THE CONTRACTOR SHALL VERIFY PERTINENT LOCATIONS AND ELEVATIONS, ESPECIALLY AT CONNECTION POINTS AND AT POTENTIAL UTILITY CONFLICTS. IT SHALL BE THE RESPONSIBILITY OF THE CONTRACTOR TO RELOCATE ALL EXISTING UTILITIES THAT CONFLICT WITH THE PROPOSED IMPROVEMENTS SHOWN ON THESE PLANS.
- THE CONTRACTOR SHALL BE RESPONSIBLE FOR OBTAINING ALL NECESSARY PERMITS FOR ALL APPLICABLE AGENCIES.
- ALL MATERIALS, WORKMANSHIP, AND CONSTRUCTION OF PUBLIC IMPROVEMENTS SHALL MEET OR EXCEED THE STANDARDS AND SPECIFICATIONS SET FORTH IN LOCAL CITY STANDARDS AND SPECIFICATIONS AND APPLICABLE STATE AND FEDERAL REGULATIONS. WHERE THERE IS CONFLICT BETWEEN THESE PLANS AND THE SPECIFICATIONS, OR ANY APPLICABLE STANDARDS, THE HIGHER QUALITY STANDARD SHALL APPLY. ALL WORK SHALL BE INSPECTED AND APPROVED BY THE APPROPRIATE GOVERNING AGENCIES.
- THE CONTRACTOR SHALL HAVE ONE (1) SIGNED COPY OF THE APPROVED CONSTRUCTION DOCUMENTS, ONE (1) COPY OF THE APPROPRIATE STANDARDS AND SPECIFICATIONS, AND A COPY OF ANY PERMITS AND EXTENSION AGREEMENTS NEEDED FOR THE JOB, ON-SITE AT ALL TIMES.
- ALL REFERENCES TO ANY PUBLISHED STANDARDS SHALL REFER TO THE LATEST REVISION OF SAID STANDARD, UNLESS SPECIFICALLY STATED OTHERWISE.
- THE CONTRACTOR SHALL BE RESPONSIBLE FOR KEEPING ROADWAYS FREE AND CLEAR OF ALL CONSTRUCTION DEBRIS TRACKED FROM THE SITE.
- THE CONTRACTOR SHALL PROTECT ALL SITE ELEMENTS DURING CONSTRUCTION INCLUDING, BUT NOT LIMITED TO: CONCRETE FLATWORK, CURB & GUTTER, PAVING, SIGNS, TREES, UTILITIES, ETC. ANY DAMAGE TO INFRASTRUCTURE SHALL BE RESPONSIBILITY OF CONTRACTOR TO REPAIR AND/OR REPLACE IN EQUAL OR BETTER CONDITION. ANY DAMAGE SHALL BE DOCUMENTED THE DAY IT OCCURS AND REPORTED TO THE CLIENT WITHIN 12 HOURS. COORDINATE WITH GENERAL CONTRACTOR.
- CONTRACTOR IS RESPONSIBLE FOR SUBMITTING LANDSCAPE AND IRRIGATION SUBMITTALS FOR APPROVAL PRIOR TO START OF ANY WORK.

**LAYOUT NOTES**

CONTRACTOR IS RESPONSIBLE FOR INSTALLING ALL LANDSCAPE SHOWN ON THIS PLAN. ANY DEVIATIONS FROM THIS PLAN ARE TO BE APPROVED BY OWNER'S REPRESENTATIVE OR LANDSCAPE ARCHITECT. DEVIATIONS FROM THE APPROVED PLAN WILL REQUIRE APPROVAL BY EL PASO COUNTY AND OWNER REPRESENTATIVE.

**TREE AND SITE PROTECTION**

CONTRACTOR TO PROVIDE PROTECTION FOR EXISTING AND/OR RELOCATED TREES TO BE PROTECTED AS SHOWN PER PLAN. CONTRACTOR SHALL ASSUME ALL RESPONSIBILITY FOR ANY DAMAGE TO PROTECTED TREES AND/OR ADJACENT LANDSCAPE. CONTRACTOR SHALL PROVIDE 4' HIGH RIGID TREE PROTECTION FENCING. EACH TREE TO BE PROTECTED SHALL BE MARKED-SEE DETAIL.  
CONTRACTOR SHALL COORDINATE EXISTING TREE / LANDSCAPE REMOVAL AND PROTECTION PER PLAN WITH GENERAL CONTRACTOR.

**CODE REQUIREMENTS - COMMERCIAL**

LANDSCAPE SETBACKS (LS)					
STREET NAME OR ZONE BOUNDARY (ELEV.)	STREET CLASSIFICATION	WIDTH (FT.) REQ./PROV.	LINEAR FOOTAGE	TREE FEET REQUIRED	NO. OF TREES REQ./PROVIDED
HIGHWAY 24	EXPRESSWAY	29/29 FT	1261 LF	1/20 FT	64/64

MOTOR VEHICLE LOTS (MV)			
NO. OF VEHICLE SPACES PROVIDED	SHADE TREES (1/15 SPACES) REQ./PROV.	VEHICLE LOT FRONTAGE(S)	2/3 LENGTH OF FRONTAGE (FT)
0	0/0	NA	
MIN. 3' SCREENING PLANTS REQ./PROV.	EVERGREEN PLANTS REQ. 50%/PROV.		
0/0	0/0		

INTERNAL LANDSCAPING (IL)			
INTERNAL LANDSCAPE AREA INCLUDES ALL LANDSCAPE AREAS NOT INCLUDING SETBACKS, BUFFERS OR MOTOR VEHICLE ISLANDS. INTERNAL LANDSCAPE AREA IS CALCULATED USING THE ENTIRE LOT. MAXIMUM OF 50% OF REQUIRED TREES MAY BE SUBSTITUTED WITH 10 SHRUBS.			
NET SITE AREA (SF) (LESS PUBLIC ROW)	PERCENT MINIMUM INTERNAL AREA (5%)	INTERNAL AREA (SF) REQ./PROV.	INTERNAL TREES (1/500 SF) (EXCLUDING DRIVEWAYS)
NA	NON-RESIDENTIAL	0/0	0/0
SHRUB SUBSTITUTES REQ./PROV.		INTERNAL PLANT ABBR. DENOTED ON PLAN	PERCENT GROUND PLANE VEG. REQ./PROV.
0/0		IL	50%/50%

LANDSCAPE BUFFERS AND SCREENS (LB)				
STREET NAME OR PROPERTY LINE (ELEV.)	LINEAR FOOTAGE	SETBACK BUFFER (5') REQ. / PROV.	BUFFER TREES (1/25') REQ./PROV.	EVERGREEN 50% MIN. REQ./PROV.
WEST BOUNDARY	1109 LF	15/15 LF	45/45	23/30

NOTE: LANDSCAPE SETBACK, INTERNAL LANDSCAPE, AND MOTOR VEHICLE LANDSCAPE WILL BE PROVIDED WITH EACH DEVELOPMENT PLAN FOR EACH INDIVIDUAL LOT.

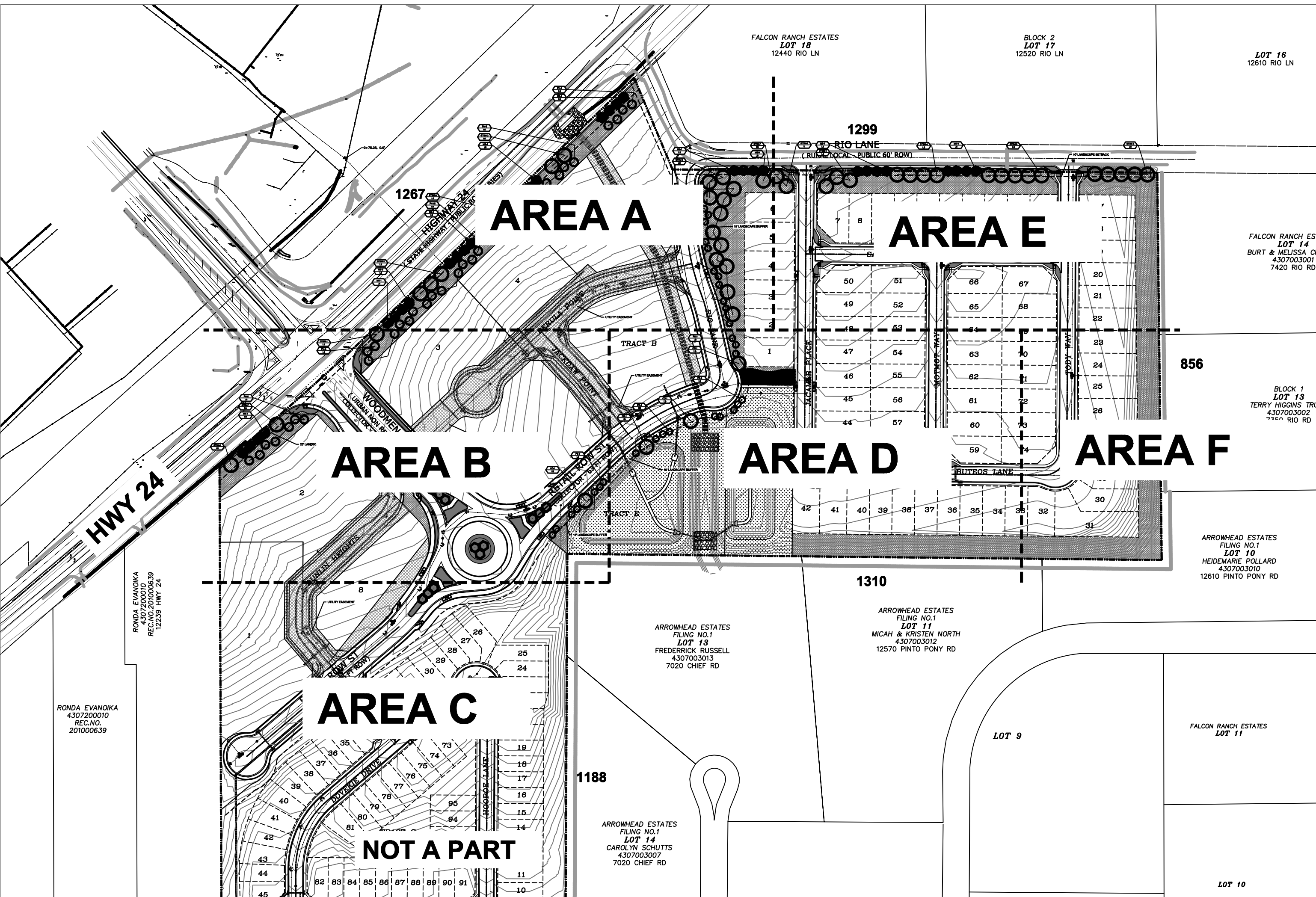
**CODE REQUIREMENTS - RESIDENTIAL**



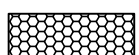
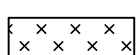
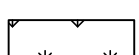
LANDSCAPE SETBACKS (LS)					
STREET NAME OR ZONE BOUNDARY (ELEV.)	STREET CLASSIFICATION	WIDTH (FT.) REQ./PROV.	LINEAR FOOTAGE	TREE FEET REQUIRED	NO. OF TREES REQ./PROVIDED
RIO LANE	NON ARTERIAL	10/10 FT	1299 LF	1/30 FT	34/34

MOTOR VEHICLE LOTS (MV)			
NO. OF VEHICLE SPACES PROVIDED	SHADE TREES (1/15 SPACES) REQ./PROV.	VEHICLE LOT FRONTAGE(S)	2/3 LENGTH OF FRONTAGE (FT)
0	0/0	NA	
MIN. 3' SCREENING PLANTS REQ./PROV.	EVERGREEN PLANTS REQ. 50%/PROV.		
0/0	0/0		

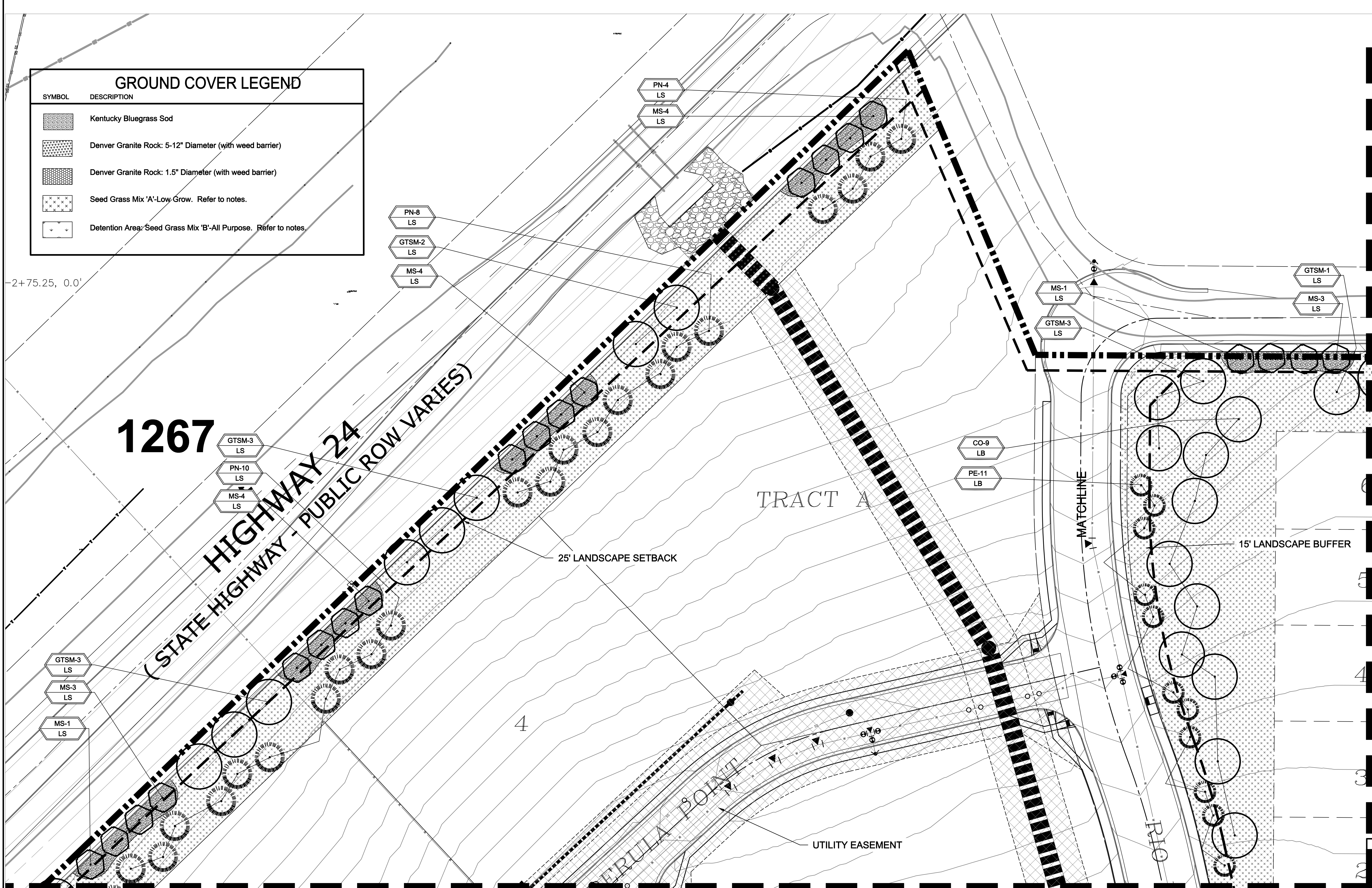
INTERNAL LANDSCAPING (IL)			
INTERNAL LANDSCAPE AREA INCLUDES ALL LANDSCAPE AREAS NOT INCLUDING SETBACKS, BUFFERS OR MOTOR VEHICLE ISLANDS. INTERNAL LANDSCAPE AREA IS CALCULATED USING THE ENTIRE LOT. MAXIMUM OF 50% OF REQUIRED TREES MAY BE SUBSTITUTED WITH 10 SHRUBS.			
NET SITE AREA (SF) (LESS PUBLIC ROW)	PERCENT MINIMUM INTERNAL AREA (5%)	INTERNAL AREA (SF) REQ./PROV.	INTERNAL TREES (1/500 SF) (EXCLUDING DRIVEWAYS)
NA	NON-RESIDENTIAL	0/0	0/0
SHRUB SUBSTITUTES REQ./PROV.		INTERNAL PLANT ABBR. DENOTED ON PLAN	PERCENT GROUND PLANE VEG. REQ./PROV.
0/0		IL	50%/50%

LANDSCAPE BUFFERS AND SCREENS (LB)				
STREET NAME OR PROPERTY LINE (ELEV.)	LINEAR FOOTAGE	SETBACK BUFFER (5') REQ. / PROV.	BUFFER TREES (1/25') REQ./PROV.	EVERGREEN 50% MIN. REQ./PROV.
NOT REQUIRED				



GROUND COVER LEGEND	
SYMBOL	DESCRIPTION
	Kentucky Bluegrass Sod
	Denver Granite Rock: 5-12" Diameter (with weed barrier)
	Denver Granite Rock: 1.5" Diameter (with weed barrier)
	Seed Grass Mix 'A'-Low Grow. Refer to notes.
	Detention Area: Seed Grass Mix 'B'-All Purpose. Refer to notes.

-2+75.25, 0.0'



1267

HIGHWAY 24  
(STATE HIGHWAY - PUBLIC ROW VARIES)

25' LANDSCAPE SETBACK

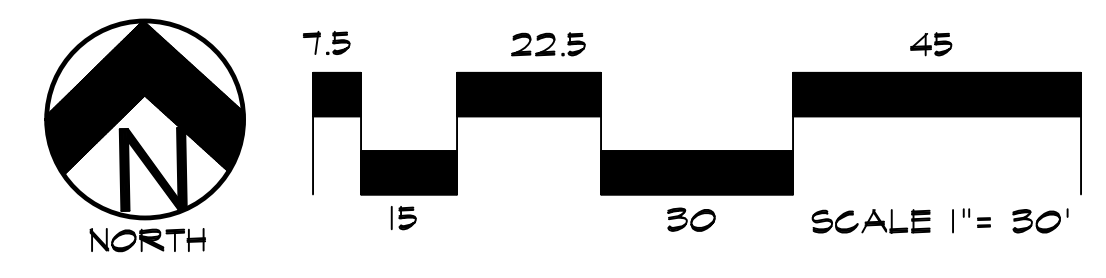
TRACT A

MATCHLINE

15' LANDSCAPE BUFFER

UTILITY EASEMENT

LANDSCAPE PLAN - AREA 'A'



**FINAL LANDSCAPE PLAN**  
ALL PLANT MATERIAL, INCLUDING SHRUBS, ORNAMENTAL GRASS, AND PERENNIALS, WILL BE SHOWN ON THE FINAL LANDSCAPE PLAN.



**UTILITIES NOTE**  
VERIFY LOCATION AND DEPTH OF ALL UNDERGROUND UTILITIES PRIOR TO START OF WORK. CALL 811 FOR UTILITY LOCATES. TREE TRUNK PLACEMENT SHALL BE 6" MINIMUM DISTANCE FROM ANY GAS OR ELECTRIC AND 10' FROM GAS MAINS RATED AT 150PSI. FOR SANITARY SEWER AND WATER MAINLINES TREES SHALL NOT BE LOCATED WITHIN EASEMENTS AND WITHIN 15' OF ANY MAINLINE. ANY CONFLICT BETWEEN TREE LOCATIONS AND UTILITIES SHOWN ON PLANS SHALL BE RESOLVED WITH GENERAL CONTRACTOR PRIOR TO PLANTING. ALL ELECTRICAL VAULTS AND TRANSFORMERS SHALL BE KEPT CLEAR FROM PLANT MATERIAL PER COLORADO SPRINGS UTILITIES GUIDELINES "LANDSCAPING AROUND ELECTRICAL EQUIPMENT". SEE COLORADO SPRINGS UTILITIES CONSTRUCTION STANDARD DRAWINGS 18-302 FOR SPECIFIC CLEARANCE REQUIREMENTS. ALL SHRUBS TO BE LOCATED 3' CLEAR OF ALL FIRE HYDRANTS AT MATURE SIZE.

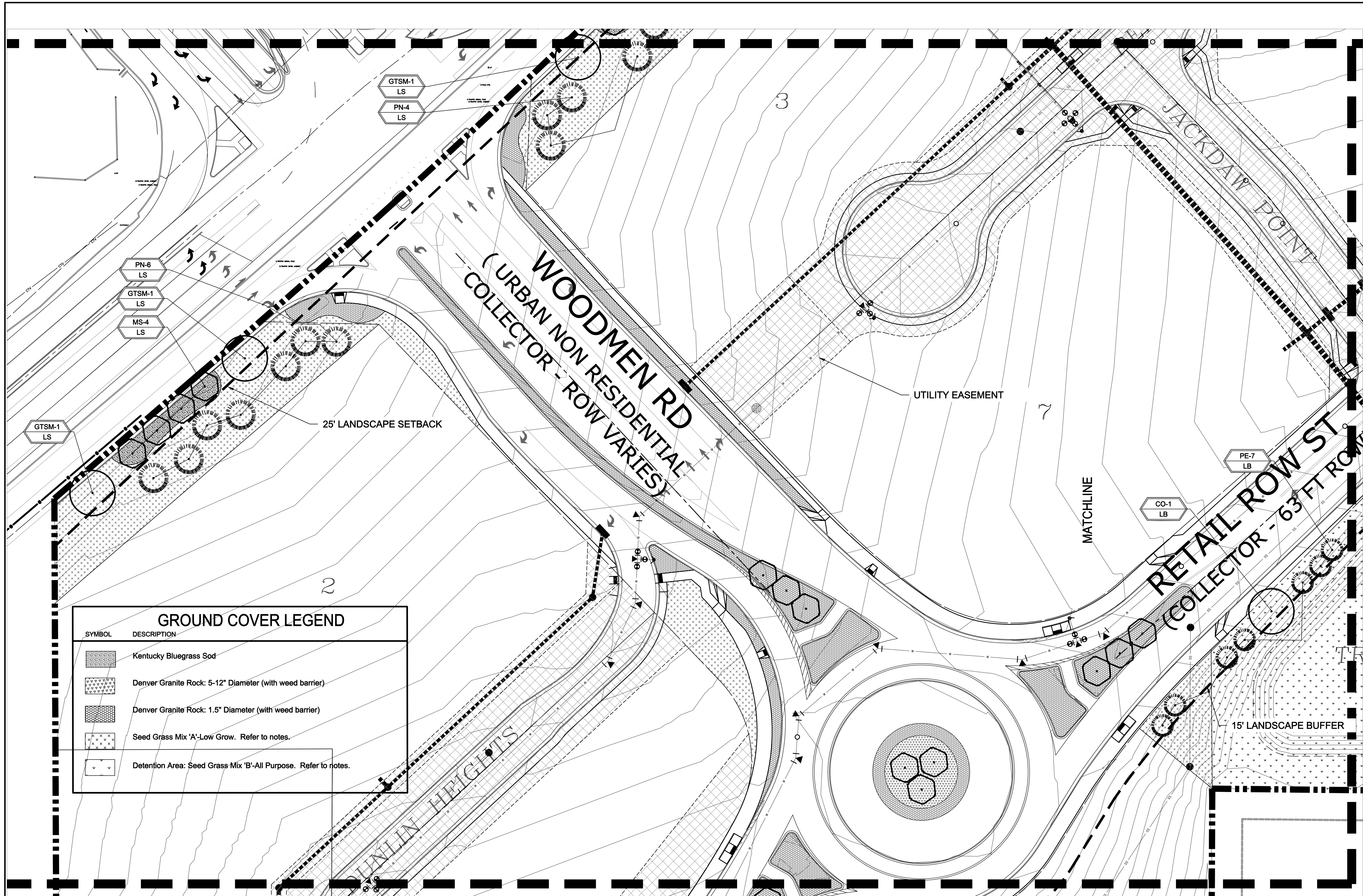
**DOCUMENT NOTE**  
IRRESPECTIVE OF ANY OTHER TERM IN THIS DOCUMENT, LANDSCAPE ARCHITECT SHALL NOT CONTROL, OR BE RESPONSIBLE FOR CONSTRUCTION MEANS, METHODS, TECHNIQUES, SCHEDULES, SEQUENCES OR PROCEDURES, OR FOR CONSTRUCTION SAFETY OR ANY OTHER RELATED PROGRAMS, OR FOR ANOTHER PARTIES' ERRORS OR OMISSIONS OR FOR ANOTHER PARTIES' FAILURE TO COMPLETE THEIR WORK OR SERVICES IN ACCORDANCE WITH LANDSCAPE ARCHITECT'S DOCUMENTS.

NOT FOR CONSTRUCTION	JOB NUMBER	1223-24
	REVISIONS	
	ORIGINAL DATE	11-13-24
	DRAWN BY	JM
	DESCRIPTION	LANDSCAPE PLAN-AREA A
SHEET NO.	L1.2	

**HIGHER GROUND DESIGNS, INC.**  
LANDSCAPE ARCHITECTURE, PLANNING & IRRIGATION DESIGN  
5350 NORTH ACADEMY BLVD., STE. 207  
COLORADO SPRINGS, CO 80918  
Phone 719-477-1646  
Fax 719-586-1122

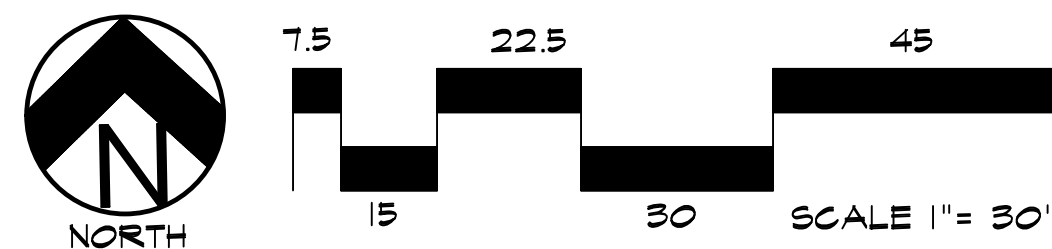


THE COMMONS AT FALCON FIELD  
FILING NO. 1 & 2  
COLORADO SPRINGS, CO  
PREPARED FOR:  
DREXEL, BARRELL & CO.  
THESE DRAWINGS ARE THE PROPERTY OF HIGHER GROUND DESIGNS, INC. AND SHALL NOT BE USED FOR ANY OTHER PROJECT WITHOUT THE AUTHORIZATION OF HIGHER GROUND DESIGNS, INC. THESE DRAWINGS ARE NOT FOR CONSTRUCTION.



GROUND COVER LEGEND	
SYMBOL	DESCRIPTION
	Kentucky Bluegrass Sod
	Denver Granite Rock: 5-12" Diameter (with weed barrier)
	Denver Granite Rock: 1.5" Diameter (with weed barrier)
	Seed Grass Mix 'A'-Low Grow. Refer to notes.
	Detention Area: Seed Grass Mix 'B'-All Purpose. Refer to notes.

# LANDSCAPE PLAN - AREA 'B'



**FINAL LANDSCAPE PLAN**  
 ALL PLANT MATERIAL, INCLUDING SHRUBS, ORNAMENTAL GRASS, AND PERENNIALS, WILL BE SHOWN ON THE FINAL LANDSCAPE PLAN.



**UTILITIES NOTE**  
 VERIFY LOCATION AND DEPTH OF ALL UNDERGROUND UTILITIES PRIOR TO START OF WORK. CALL 811 FOR UTILITY LOCATES. TREE TRUNK PLACEMENT SHALL BE 6" MINIMUM DISTANCE FROM ANY GAS OR ELECTRIC AND 10' FROM GAS MAINS RATED AT 150PSI. FOR SANITARY SEWER AND WATER MAINLINES TREES SHALL NOT BE LOCATED WITHIN EASEMENTS AND WITHIN 15' OF ANY MAINLINE. ANY CONFLICT BETWEEN TREE LOCATIONS AND UTILITIES SHOWN ON PLANS SHALL BE RESOLVED WITH GENERAL CONTRACTOR PRIOR TO PLANTING. ALL ELECTRICAL VAULTS AND TRANSFORMERS SHALL BE KEPT CLEAR FROM PLANT MATERIAL PER COLORADO SPRINGS UTILITIES GUIDELINES "LANDSCAPING AROUND ELECTRICAL EQUIPMENT". SEE COLORADO SPRINGS UTILITIES CONSTRUCTION STANDARD DRAWINGS 18-302 FOR SPECIFIC CLEARANCE REQUIREMENTS. ALL SHRUBS TO BE LOCATED 3' CLEAR OF ALL FIRE HYDRANTS AT MATURE SIZE.

**DOCUMENT NOTE**  
 IRRESPECTIVE OF ANY OTHER TERM IN THIS DOCUMENT, LANDSCAPE ARCHITECT SHALL NOT CONTROL, OR BE RESPONSIBLE FOR CONSTRUCTION MEANS, METHODS, TECHNIQUES, SCHEDULES, SEQUENCES OR PROCEDURES, OR FOR CONSTRUCTION SAFETY OR ANY OTHER RELATED PROGRAMS, OR FOR ANOTHER PARTIES' ERRORS OR OMISSIONS OR FOR ANOTHER PARTIES FAILURE TO COMPLETE THEIR WORK OR SERVICES IN ACCORDANCE WITH LANDSCAPE ARCHITECT'S DOCUMENTS.

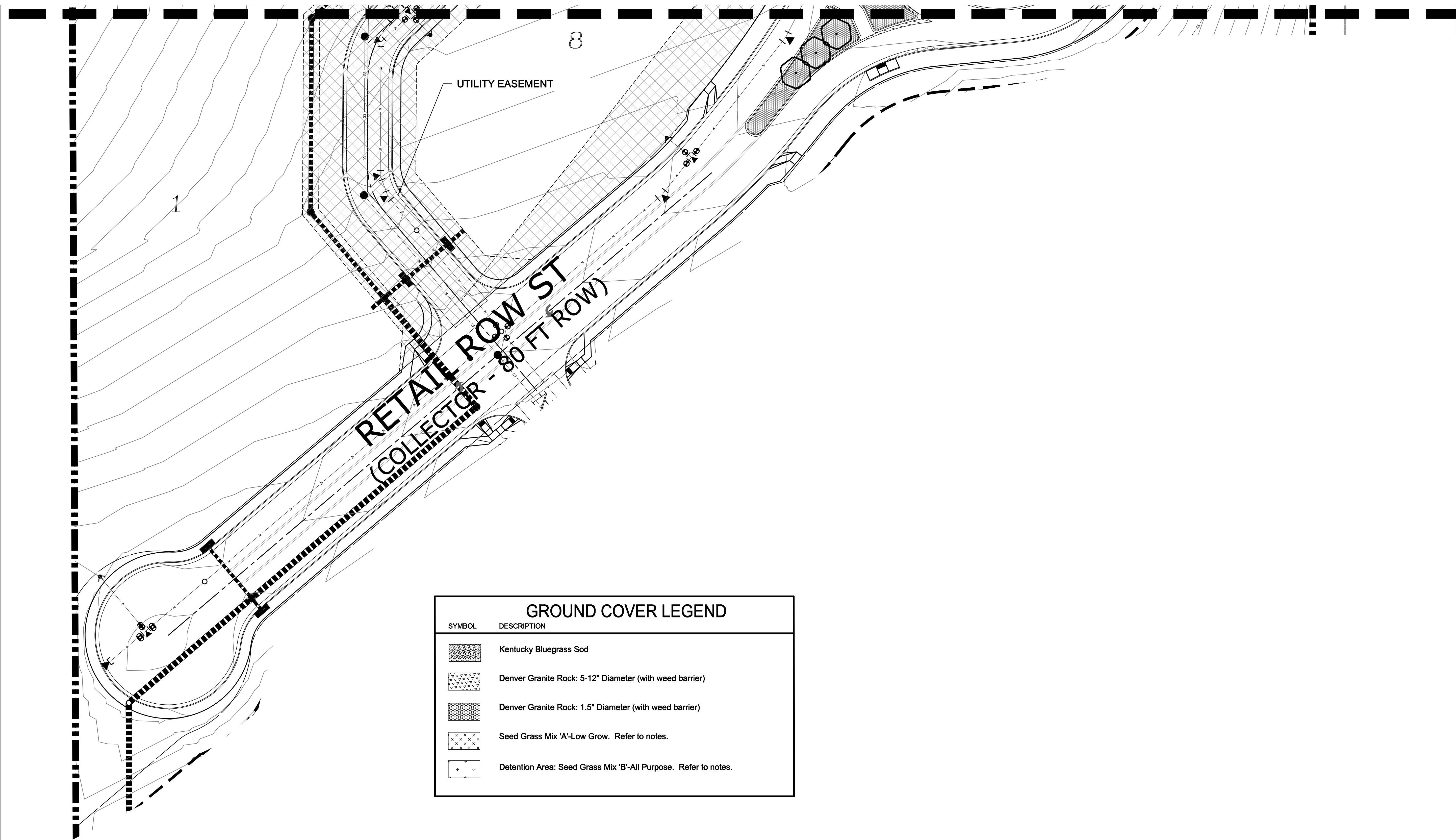
<b>NOT FOR CONSTRUCTION</b>	JOB NUMBER	1223-24
	REVISIONS	
	ORIGINAL DATE	11-13-24
	DRAWN BY	JM
	DESCRIPTION	LANDSCAPE PLAN-AREA B
SHEET NO.	L1.3	

THE COMMONS AT FALCON FIELD  
 FILING NO. 1 & 2  
 COLORADO SPRINGS, CO

PREPARED FOR:  
 DREXEL, BARRELL & CO.  
 THESE DRAWINGS ARE THE PROPERTY OF HIGHER GROUND DESIGNS, INC. AND SHALL NOT BE USED FOR ANY OTHER PROJECT WITHOUT THE AUTHORIZATION BY HIGHER GROUND DESIGNS, INC. THESE DRAWINGS ARE NOT FOR CONSTRUCTION.

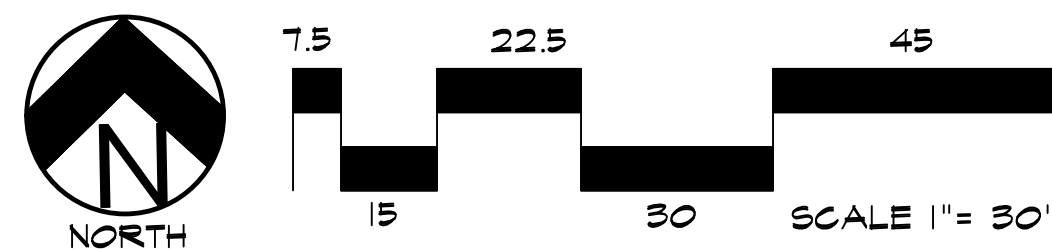


**HIGHER GROUND DESIGNS, INC.**  
 LANDSCAPE ARCHITECTURE, PLANNING & IRRIGATION DESIGN  
 5350 NORTH ACADEMY BLVD., STE. 207  
 COLORADO SPRINGS, CO 80918  
 Phone 719-477-1646  
 Fax 719-586-1122



GROUND COVER LEGEND	
SYMBOL	DESCRIPTION
	Kentucky Bluegrass Sod
	Denver Granite Rock: 5-12" Diameter (with weed barrier)
	Denver Granite Rock: 1.5" Diameter (with weed barrier)
	Seed Grass Mix 'A'-Low Grow. Refer to notes.
	Detention Area: Seed Grass Mix 'B'-All Purpose. Refer to notes.

# LANDSCAPE PLAN - AREA 'C'



**FINAL LANDSCAPE PLAN**  
 ALL PLANT MATERIAL, INCLUDING SHRUBS, ORNAMENTAL GRASS, AND PERENNIALS, WILL BE SHOWN ON THE FINAL LANDSCAPE PLAN.



**UTILITIES NOTE**  
 VERIFY LOCATION AND DEPTH OF ALL UNDERGROUND UTILITIES PRIOR TO START OF WORK. CALL 811 FOR UTILITY LOCATES. TREE TRUNK PLACEMENT SHALL BE 6' MINIMUM DISTANCE FROM ANY GAS OR ELECTRIC AND 10' FROM GAS MAINS RATED AT 150PSI. FOR SANITARY SEWER AND WATER MAINLINES TREES SHALL NOT BE LOCATED WITHIN EASEMENTS AND WITHIN 15' OF ANY MAINLINE. ANY CONFLICT BETWEEN TREE LOCATIONS AND UTILITIES SHOWN ON PLANS SHALL BE RESOLVED WITH GENERAL CONTRACTOR PRIOR TO PLANTING. ALL ELECTRICAL VAULTS AND TRANSFORMERS SHALL BE KEPT CLEAR FROM PLANT MATERIAL PER COLORADO SPRINGS UTILITIES GUIDELINES "LANDSCAPING AROUND ELECTRICAL EQUIPMENT". SEE COLORADO SPRINGS UTILITIES CONSTRUCTION STANDARD DRAWINGS 18-302 FOR SPECIFIC CLEARANCE REQUIREMENTS. ALL SHRUBS TO BE LOCATED 3' CLEAR OF ALL FIRE HYDRANTS AT MATURE SIZE.

**DOCUMENT NOTE**  
 IRRESPECTIVE OF ANY OTHER TERM IN THIS DOCUMENT, LANDSCAPE ARCHITECT SHALL NOT CONTROL OR BE RESPONSIBLE FOR CONSTRUCTION MEANS, METHODS, TECHNIQUES, SCHEDULES, SEQUENCES OR PROCEDURES, OR FOR CONSTRUCTION SAFETY OR ANY OTHER RELATED PROGRAMS, OR FOR ANOTHER PARTIES' ERRORS OR OMISSIONS OR FOR ANOTHER PARTIES FAILURE TO COMPLETE THEIR WORK OR SERVICES IN ACCORDANCE WITH LANDSCAPE ARCHITECT'S DOCUMENTS.

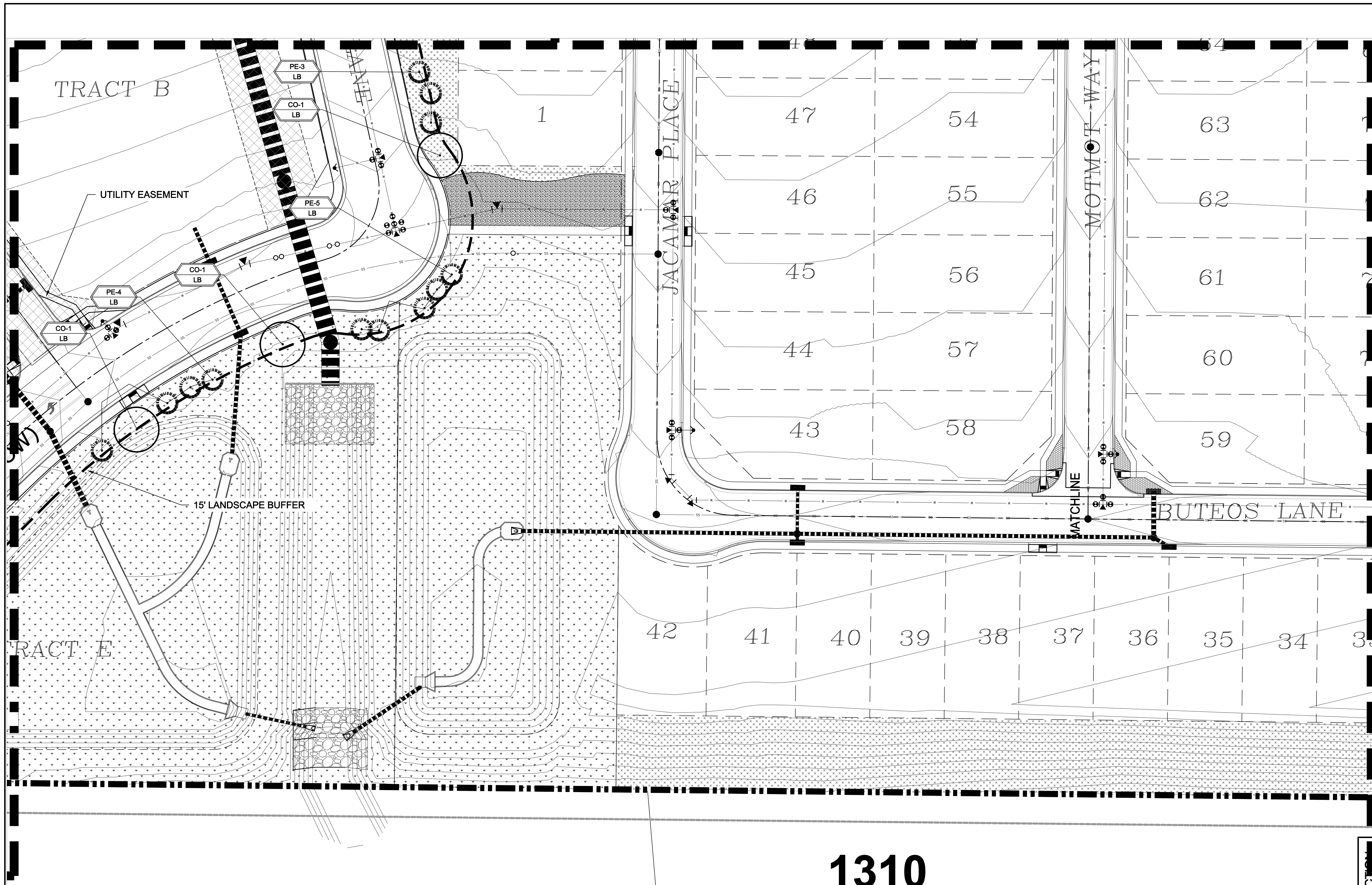
<b>NOT FOR CONSTRUCTION</b>	JOB NUMBER	1223-24
	REVISIONS	
ORIGINAL DATE	11-13-24	
DRAWN BY	JM	
DESCRIPTION	LANDSCAPE PLAN-AREA C	
SHEET NO.	L1.4	

THE COMMONS AT FALCON FIELD  
 FILING NO. 1 & 2  
 COLORADO SPRINGS, CO

PREPARED FOR:  
 DREXEL, BARRELL & CO.  
 THESE DRAWINGS ARE THE PROPERTY OF HIGHER GROUND DESIGNS, INC. AND SHALL NOT BE USED FOR ANY OTHER PROJECT WITHOUT THE AUTHORIZATION BY HIGHER GROUND DESIGNS, INC. THESE DRAWINGS ARE NOT FOR CONSTRUCTION.

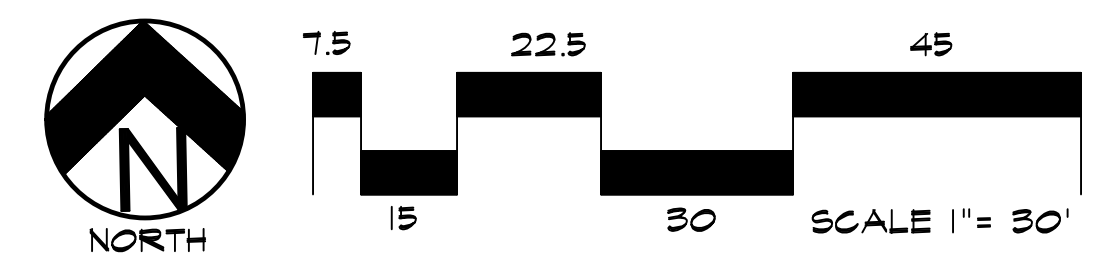


**HIGHER GROUND DESIGNS, INC.**  
 LANDSCAPE ARCHITECTURE, PLANNING & IRRIGATION DESIGN  
 5350 NORTH ACADEMY BLVD., STE. 207  
 COLORADO SPRINGS, CO 80918  
 Phone 719-477-1646  
 Fax 719-486-1122



1310

LANDSCAPE PLAN - AREA 'D'



**FINAL LANDSCAPE PLAN**  
 ALL PLANT MATERIAL, INCLUDING SHRUBS, ORNAMENTAL GRASS, AND PERENNIALS, WILL BE SHOWN ON THE FINAL LANDSCAPE PLAN.



**UTILITIES NOTE**  
 VERIFY LOCATION AND DEPTH OF ALL UNDERGROUND UTILITIES PRIOR TO START OF WORK. CALL 811 FOR UTILITY LOCATES. TREE TRUNK PLACEMENT SHALL BE 6' MINIMUM DISTANCE FROM ANY GAS OR ELECTRIC AND 10' FROM GAS MAINS RATED AT 150PSI. FOR SANITARY SEWER AND WATER MAINLINES TREES SHALL NOT BE LOCATED WITHIN EASEMENTS AND WITHIN 15' OF ANY MAINLINE. ANY CONFLICT BETWEEN TREE LOCATIONS AND UTILITIES SHOWN ON PLANS SHALL BE RESOLVED WITH GENERAL CONTRACTOR PRIOR TO PLANTING. ALL ELECTRICAL VAULTS AND TRANSFORMERS SHALL BE KEPT CLEAR FROM PLANT MATERIAL PER COLORADO SPRINGS UTILITIES GUIDELINES "LANDSCAPING AROUND ELECTRICAL EQUIPMENT". SEE COLORADO SPRINGS UTILITIES CONSTRUCTION STANDARD DRAWINGS 18-302 FOR SPECIFIC CLEARANCE REQUIREMENTS. ALL SHRUBS TO BE LOCATED 3' CLEAR OF ALL FIRE HYDRANTS AT MATURE SIZE.

**DOCUMENT NOTE**  
 IRRESPECTIVE OF ANY OTHER TERM IN THIS DOCUMENT, LANDSCAPE ARCHITECT SHALL NOT CONTROL OR BE RESPONSIBLE FOR CONSTRUCTION MEANS, METHODS, TECHNIQUES, SCHEDULES, SEQUENCES OR PROCEDURES, OR FOR CONSTRUCTION SAFETY OR ANY OTHER RELATED PROGRAMS, OR FOR ANOTHER PARTY'S ERRORS OR OMISSIONS OR FOR ANOTHER PARTY'S FAILURE TO COMPLETE THEIR WORK OR SERVICES IN ACCORDANCE WITH LANDSCAPE ARCHITECT'S DOCUMENTS.

**NOT FOR CONSTRUCTION**

JOB NUMBER	1223-24
REVISIONS	
ORIGINAL DATE	11-13-24
DRAWN BY	JM
DESCRIPTION	LANDSCAPE PLAN-AREA D
SHEET NO.	L1.5

**HIGHER GROUND DESIGNS, INC.**  
 LANDSCAPE ARCHITECTURE, PLANNING & IRRIGATION DESIGN  
 5350 NORTH ACADEMY BLVD., STE. 207  
 COLORADO SPRINGS, CO 80918  
 Phone 719-477-1646  
 Fax 719-588-1122

**HIGHER GROUND DESIGNS**

THE COMMONS AT FALCON FIELD  
 FILING NO. 1 & 2  
 COLORADO SPRINGS, CO

PREPARED FOR:  
 DREXEL, BARRELL & CO.

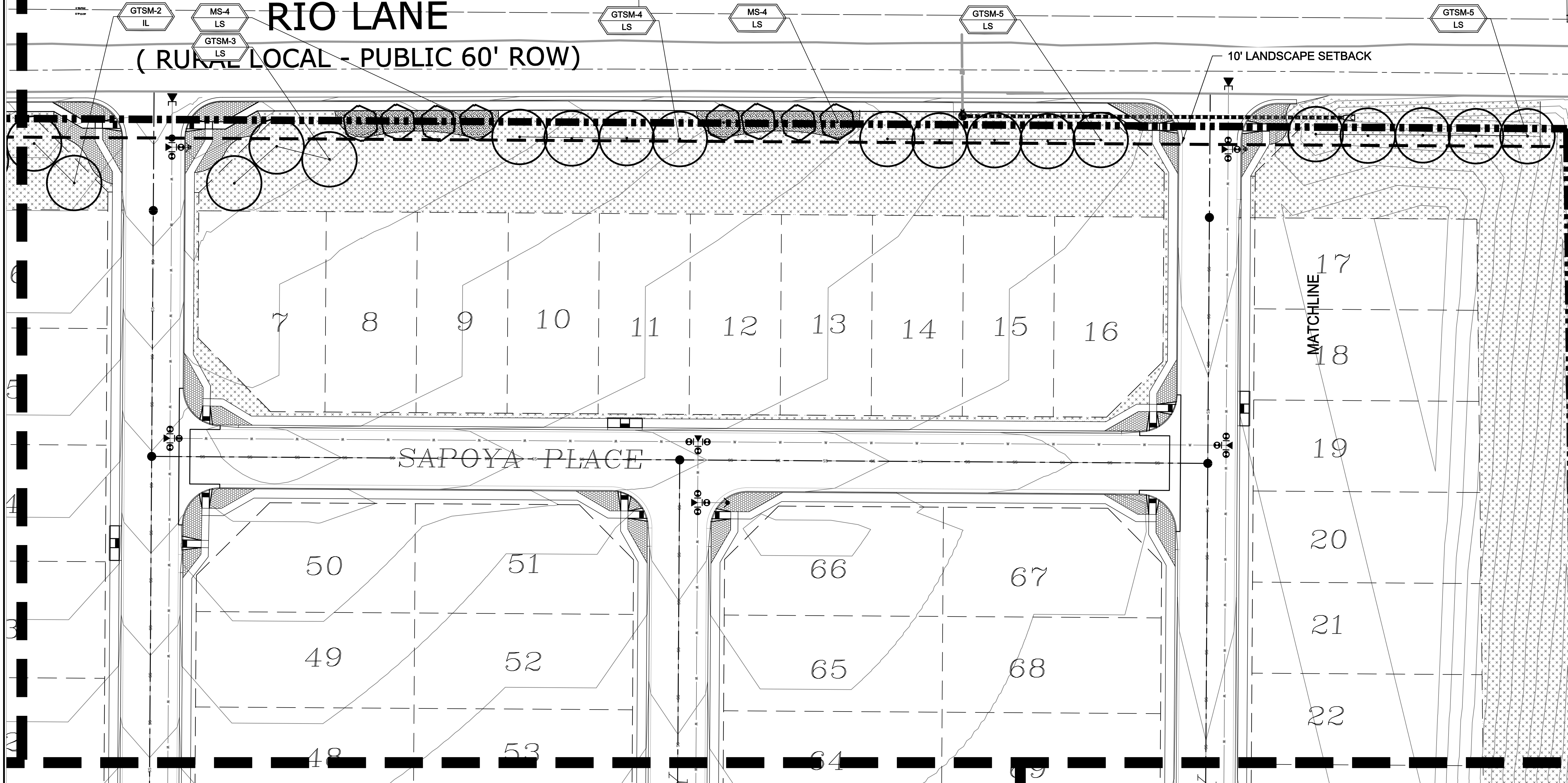
THESE DRAWINGS ARE THE PROPERTY OF HIGHER GROUND DESIGNS, INC. AND SHALL NOT BE USED FOR ANY OTHER PROJECT WITHOUT THE AUTHORIZATION BY HIGHER GROUND DESIGNS, INC. THESE DRAWINGS ARE NOT FOR CONSTRUCTION.

# 1299

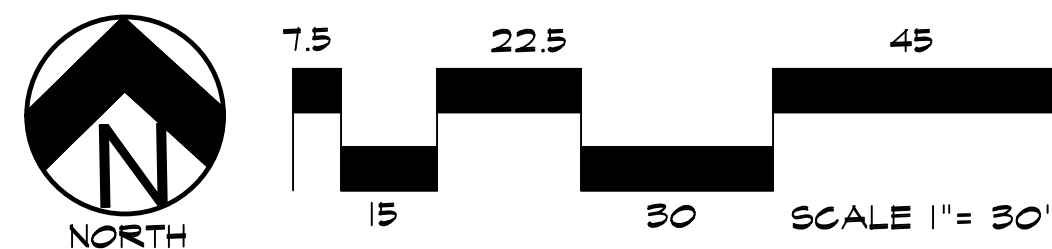
## RIO LANE

(RURAL LOCAL - PUBLIC 60' ROW)

GROUND COVER LEGEND	
SYMBOL	DESCRIPTION
	Kentucky Bluegrass Sod
	Denver Granite Rock: 5-12" Diameter (with weed barrier)
	Denver Granite Rock: 1.5" Diameter (with weed barrier)
	Seed Grass Mix 'A'-Low Grow. Refer to notes.
	Detention Area: Seed Grass Mix 'B'-All Purpose. Refer to notes.



### LANDSCAPE PLAN - AREA 'E'



#### FINAL LANDSCAPE PLAN

ALL PLANT MATERIAL, INCLUDING SHRUBS, ORNAMENTAL GRASS, AND PERENNIALS, WILL BE SHOWN ON THE FINAL LANDSCAPE PLAN.



Know what's below.  
Call before you dig.

#### UTILITIES NOTE

VERIFY LOCATION AND DEPTH OF ALL UNDERGROUND UTILITIES PRIOR TO START OF WORK. CALL 811 FOR UTILITY LOCATES. TREE TRUNK PLACEMENT SHALL BE 6" MINIMUM DISTANCE FROM ANY GAS OR ELECTRIC AND 10' FROM GAS MAINS RATED AT 150PSI. FOR SANITARY SEWER AND WATER MAINLINES TREES SHALL NOT BE LOCATED WITHIN EASEMENTS AND WITHIN 15' OF ANY MAINLINE. ANY CONFLICT BETWEEN TREE LOCATIONS AND UTILITIES SHOWN ON PLANS SHALL BE RESOLVED WITH GENERAL CONTRACTOR PRIOR TO PLANTING. ALL ELECTRICAL VAULTS AND TRANSFORMERS SHALL BE KEPT CLEAR FROM PLANT MATERIAL PER COLORADO SPRINGS UTILITIES GUIDELINES "LANDSCAPING AROUND ELECTRICAL EQUIPMENT". SEE COLORADO SPRINGS UTILITIES CONSTRUCTION STANDARD DRAWINGS 18-302 FOR SPECIFIC CLEARANCE REQUIREMENTS. ALL SHRUBS TO BE LOCATED 3' CLEAR OF ALL FIRE HYDRANTS AT MATURE SIZE.

#### DOCUMENT NOTE

IRRESPECTIVE OF ANY OTHER TERM IN THIS DOCUMENT, LANDSCAPE ARCHITECT SHALL NOT CONTROL, OR BE RESPONSIBLE FOR CONSTRUCTION MEANS, METHODS, TECHNIQUES, SCHEDULES, SEQUENCES OR PROCEDURES, OR FOR CONSTRUCTION SAFETY OR ANY OTHER RELATED PROGRAMS, OR FOR ANOTHER PARTIES' ERRORS OR OMISSIONS OR FOR ANOTHER PARTIES' FAILURE TO COMPLETE THEIR WORK OR SERVICES IN ACCORDANCE WITH LANDSCAPE ARCHITECT'S DOCUMENTS.

NOT FOR CONSTRUCTION

JOB NUMBER	1223-24
REVISIONS	
ORIGINAL DATE	11-13-24
DRAWN BY	JM
DESCRIPTION	LANDSCAPE PLAN-AREA E
SHEET NO.	L1.6

THE COMMONS AT FALCON FIELD

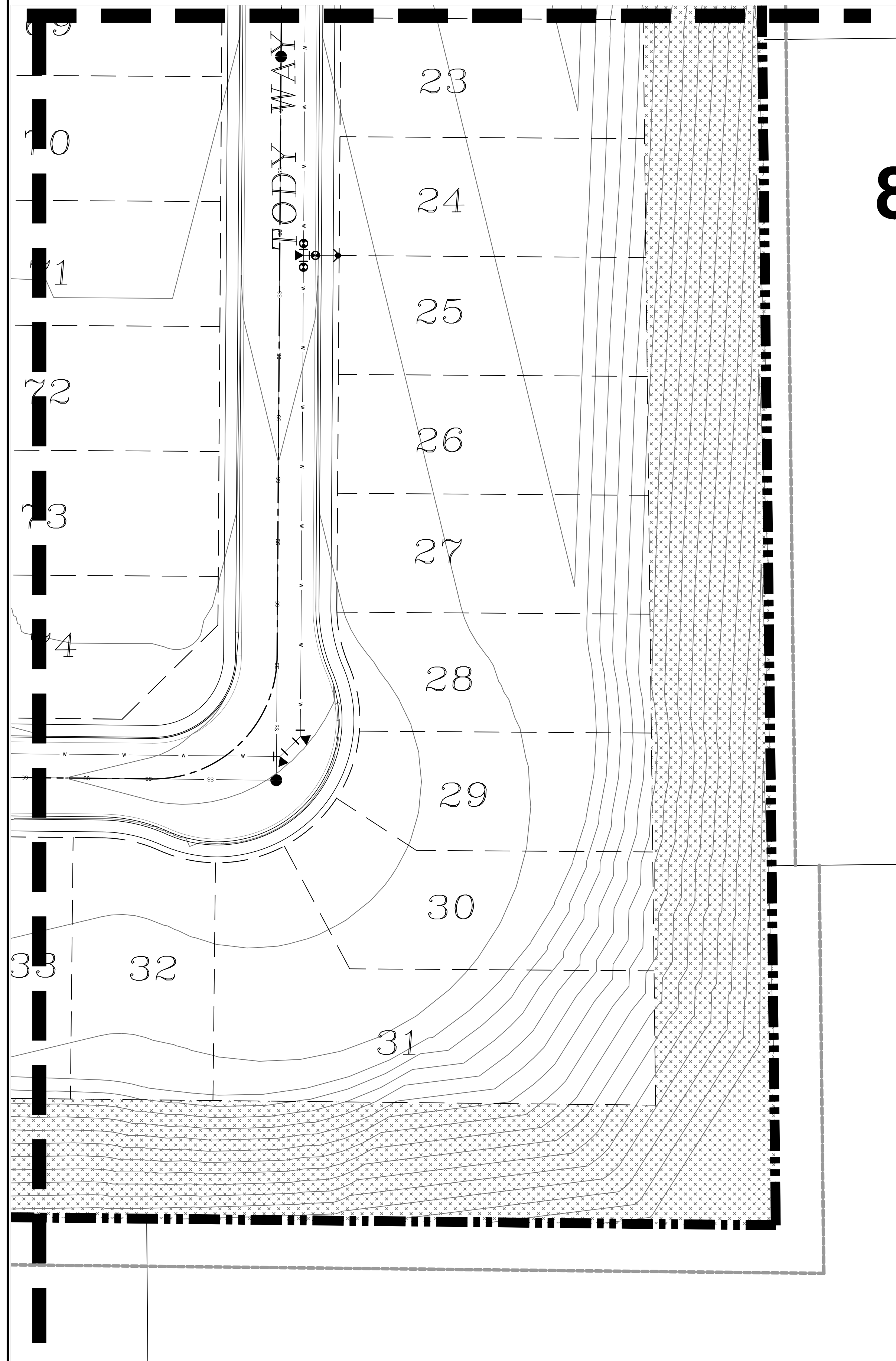
FILING NO. 1 & 2  
COLORADO SPRINGS, CO

PREPARED FOR:  
DREXEL, BARRELL & CO.  
THESE DRAWINGS ARE THE PROPERTY OF HIGHER GROUND DESIGNS, INC. AND SHALL NOT BE USED FOR ANY OTHER PROJECT WITHOUT THE AUTHORIZATION BY HIGHER GROUND DESIGNS, INC. THESE DRAWINGS ARE NOT FOR CONSTRUCTION.

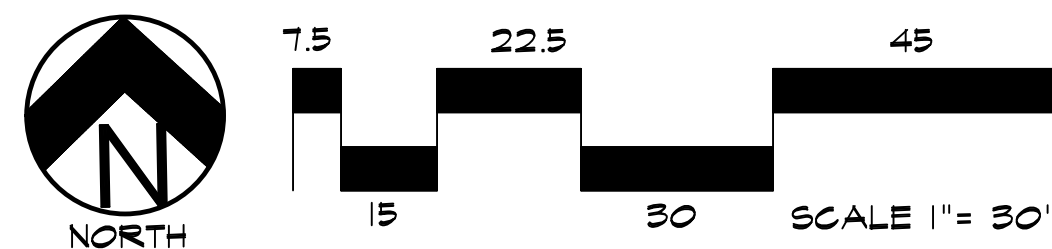


HIGHER GROUND DESIGNS, INC.  
LANDSCAPE ARCHITECTURE, PLANNING & IRRIGATION DESIGN

5350 NORTH ACADEMY BLVD., STE. 207  
COLORADO SPRINGS, CO 80918  
Phone 719-477-1646  
Fax 719-588-1122



# LANDSCAPE PLAN - AREA 'F'



## FINAL LANDSCAPE PLAN

ALL PLANT MATERIAL, INCLUDING SHRUBS, ORNAMENTAL GRASS, AND PERENNIALS, WILL BE SHOWN ON THE FINAL LANDSCAPE PLAN.



Know what's below.  
Call before you dig.

**UTILITIES NOTE**  
 VERIFY LOCATION AND DEPTH OF ALL UNDERGROUND UTILITIES PRIOR TO START OF WORK. CALL 811 FOR UTILITY LOCATES. TREE TRUNK PLACEMENT SHALL BE 6" MINIMUM DISTANCE FROM ANY GAS OR ELECTRIC AND 10' FROM GAS MAINS RATED AT 150PSI. FOR SANITARY SEWER AND WATER MAINLINES TREES SHALL NOT BE LOCATED WITHIN EASEMENTS AND WITHIN 15' OF ANY MAINLINE. ANY CONFLICT BETWEEN TREE LOCATIONS AND UTILITIES SHOWN ON PLANS SHALL BE RESOLVED WITH GENERAL CONTRACTOR PRIOR TO PLANTING. ALL ELECTRICAL VAULTS AND TRANSFORMERS SHALL BE KEPT CLEAR FROM PLANT MATERIAL PER COLORADO SPRINGS UTILITIES GUIDELINES "LANDSCAPING AROUND ELECTRICAL EQUIPMENT". SEE COLORADO SPRINGS UTILITIES CONSTRUCTION STANDARD DRAWINGS 18-302 FOR SPECIFIC CLEARANCE REQUIREMENTS. ALL SHRUBS TO BE LOCATED 3' CLEAR OF ALL FIRE HYDRANTS AT MATURE SIZE.

**DOCUMENT NOTE**  
 IRRESPECTIVE OF ANY OTHER TERM IN THIS DOCUMENT, LANDSCAPE ARCHITECT SHALL NOT CONTROL OR BE RESPONSIBLE FOR CONSTRUCTION MEANS, METHODS, TECHNIQUES, SCHEDULES, SEQUENCES OR PROCEDURES, OR FOR CONSTRUCTION SAFETY OR ANY OTHER RELATED PROGRAMS, OR FOR ANOTHER PARTIES' ERRORS OR OMISSIONS OR FOR ANOTHER PARTIES FAILURE TO COMPLETE THEIR WORK OR SERVICES IN ACCORDANCE WITH LANDSCAPE ARCHITECT'S DOCUMENTS.

PLANT SCHEDULE						
Symbol	Abbr.	Quantity	Botanical Name	Common Name	Mature Size w x h	B & B Planting Size
<b>DECIDUOUS TREES:</b>						
●	CO	13	<i>Celtis occidentalis</i>	Hackberry	30' x 40'	1-1/2' cal.
	MS	32	<i>Malus 'Spring Snow'</i>	Spring Snow Crabapple	15'x15'	1-1/2' cal.
	GTSM	34	<i>Gleditsia triacanthos 'Shademaster'</i>	Shademaster Honeylocust	30' x 40'	1-1/2' cal.
<b>EVERGREEN TREES:</b>						
⊙	PE	30	<i>Pinus edulis</i>	Pinyon Pine	15'x15'	6' ht.
	PN	33	<i>Pinus nigra</i>	Austrian Pine	20'x45'	6' ht.

GROUND COVER LEGEND		
SYMBOL	DESCRIPTION	APPROX. SF
[Pattern]	Kentucky Bluegrass Sod	0 SF
[Pattern]	Denver Granite Rock: 5-12" Diameter (with weed barrier) Submit sample to owner prior to ordering material	0 SF
[Pattern]	Denver Granite Rock: 1.5" Diameter (with weed barrier) Submit sample to owner prior to ordering material	0 SF
[Pattern]	Seed Grass Mix 'A'-Low Grow. Refer to notes. Submit spec to owner prior to ordering material	0 SF
[Pattern]	Detention Area: Seed Grass Mix 'B'-All Purpose. Refer to notes. Submit spec to owner prior to ordering material	0 SF
(+)	Protect Existing Tree	
(-)	Remove Existing Tree	
[Line]	Steel Edger. See notes	

NOT FOR CONSTRUCTION	JOB NUMBER	1223-24
	REVISIONS	
	ORIGINAL DATE	11-13-24
	DRAWN BY	JM
	DESCRIPTION	LANDSCAPE PLAN-AREA F
	SHEET NO.	L1.7

THE COMMONS AT FALCON FIELD  
 FILING NO. 1 & 2  
 COLORADO SPRINGS, CO

THESE DRAWINGS ARE THE PROPERTY OF HIGHER GROUND DESIGNS, INC. AND SHALL NOT BE USED FOR ANY OTHER PROJECT WITHOUT THE AUTHORIZATION BY HIGHER GROUND DESIGNS, INC. THESE DRAWINGS ARE NOT FOR CONSTRUCTION.

PREPARED FOR:  
 DREXEL, BARRELL & CO.



**HIGHER GROUND DESIGNS, INC.**  
 LANDSCAPE ARCHITECTURE, PLANNING & IRRIGATION DESIGN  
 5350 NORTH ACADEMY BLVD., STE. 207  
 COLORADO SPRINGS, CO 80918  
 Phone 719-477-1646  
 Fax 719-588-1122

### INSTALLATION NOTES

REMOVE EXISTING TREES, DEBRIS AND WEEDS FROM SITE PRIOR TO CONSTRUCTION (AS SHOWN PER PLAN).

LANDSCAPE CONTRACTOR IS RESPONSIBLE FOR MAINTAINING THE SITE DURING CONSTRUCTION. WEEDS AND TRASH SHALL BE REMOVED DAILY AS REQUIRED.

EXISTING TOPSOIL TO BE STOCKPILED ON-SITE AND USED DURING CONSTRUCTION TO ESTABLISH GRADES WITHIN LANDSCAPE AREAS AS SHOWN PER PLAN.

CONTRACTOR SHALL REFER TO ASSOCIATED LANDSCAPE CONTRACTORS OF COLORADO HANDBOOK (ALCC) 2007 REVISED EDITION FOR ALL CONSTRUCTION FOR THIS SITE. CONTACT OWNER/LANDSCAPE ARCHITECT FOR QUESTIONS.

QUANTITIES SHOWN IN PLANT SCHEDULE ARE FOR CONVENIENCE ONLY. CONTRACTOR IS RESPONSIBLE FOR INSTALLING ALL PLANT MATERIAL PER PLAN. LANDSCAPE CONTRACTOR SHALL BE RESPONSIBLE FOR ALL THEFTS OR DAMAGE TO PLANT MATERIAL ONCE PLANT MATERIAL IS DELIVERED TO JOB SITE.

LANDSCAPE ARCHITECT SHALL HAVE OPPORTUNITY TO INSPECT AND APPROVE ALL TREES AND ALL 1-15 GALLON MATERIAL AT JOB SITE PRIOR TO PLANTING, INCLUDING PLACEMENT INSPECTION.

ALL EDGING SEPARATING GRASS AND ROCK/MULCH AREAS TO BE GREEN PRO-STEEL OR APPROVED EQUAL. EDGING TO BE EXPOSED 1/2" +/- ABOVE FINISHED GRADES. INSTALL PER MANUFACTURE RECOMMENDATIONS. NO EDGING BETWEEN ROCK MULCHES.

ALL ROCK COVER AREAS ONLY TO BE PREPARED WITH LANDSCAPE FABRIC WITH STAPLES AT 5' O.C. FABRIC SEAMS TO BE OVERLAPPED 6" MIN. AND SECURED WITH STAPLES.

GROUND COVER SHALL BE CONTINUOUS UNDER ALL SHRUBS THROUGHOUT PROJECT SITE.

TREES AND SHRUBS TO RECEIVE ORGANIC MULCH PER DETAILS, INCLUDING ROCK AREAS-SEE DETAILS. ORGANIC MULCH TO BE 'CASCADE SHREDDED CEDAR' WITH NO LANDSCAPE FABRIC AND 4" DEPTH.

DO NOT PLANT SHRUBS OR TREES OF INCOMPATIBLE WATER REQUIREMENTS IMMEDIATELY ADJACENT TO ONE ANOTHER.

PLANT BACKFILL SHALL BE 70% NATIVE ON-SITE SOIL, AND 30% BREW-GRO BIOCOMP CLASS 1 (OR CITY APPROVED EQUAL)

A REPRESENTATIVE SAMPLE OF THE BOTANICAL NAME TAGS, FURNISHED BY THE NURSERY STOCK PROVIDER SHALL REMAIN ATTACHED TO THE PLANTS UNTIL FINAL INSPECTION.

LANDSCAPE CONTRACTOR SHALL NOTIFY LANDSCAPE ARCHITECT IF STORM DRAINAGE FROM ADJACENT LANDSCAPE AREAS OR BUILDING DOWNSPOUTS WILL ADVERSELY AFFECT LANDSCAPED AREAS PER THE PLAN.

DECORATIVE BOULDERS SHALL BE BURIED 1/3 BELOW GRADE AND SHALL NOT OBSTRUCT VEHICULAR SIGHTLINES IF APPLICABLE.

PRIOR TO INSTALLING PLANTS OR GROUND COVER BROADCAST PREEN WEED PRE-EMERGENT IN ALL PLANTING AREAS PER MANUFACTURE RECOMMENDATIONS. [WWW.PREEN.COM](http://WWW.PREEN.COM)

### SOIL PREP NOTES

SOIL PREPARATION FOR UNDISTURBED OR COMPACTED PLANTING AREAS:

- IF UNDISTURBED RIP EXISTING SOIL TO A DEPTH OF NINE (9) INCHES MINIMUM IN ONE DIRECTION USING AN AGRICULTURAL RIPPER WITH TINES SPACED NO FURTHER THAN EIGHTEEN (18) INCHES APART OR TILL TO 6" DEPTH. AREAS ADJACENT TO WALKS, STRUCTURES, CURBS, ETC., WHERE THE USE OF LARGE MECHANICAL EQUIPMENT IS DIFFICULT SHALL BE WORKED WITH SMALLER EQUIPMENT OR BY HAND.
- REMOVE ALL RUBBLE, STONES AND EXTRANEIOUS MATERIAL OVER TWO (2) INCHES IN DIAMETER FROM THE SITE.

### SLOPE STABILIZATION

LANDSCAPE CONTRACTOR TO PROVIDE EROSION CONTROL BLANKETS OR EQUAL ON SEEDED SLOPES 3:1 AND STEEPER. BLANKETS TO BE SECURED TO SLOPE PER MANUFACTURE RECOMMENDATIONS FIELD VERIFY SLOPES.

EROSION CONTROL BLANKET SHALL CONSIST OF 100% AGRICULTURAL STRAW BLANKET WITH PHOTODEGRADABLE NETTING ON BOTH SIDES.

### SEEDING NOTES

SEED MIX 'A': NATIVE SEED TO BE EL PASO COUNTY LOW GROW MIX. REFER TO CHART. SEED TO BE APPLIED AT 4LBS/1,000 SF USING DRILL SEED PROCESS OR HYDRO-SEED PROCESS MINIMUM OR PER EL PASO GUIDELINES. SOIL SHALL BE AMENDED BREW-GRO BIOCOMP CLASS 1 (OR CITY APPROVED EQUAL) AT 2 C.Y./1000 SF TILLED INTO TOP 4-6" OF SOIL PRIOR TO SEEDING. REFER TO CHART 5-2 FOR IRRIGATED MIX.

SEED MIX 'B': NATIVE SEED TO BE EL PASO COUNTY CONSERVATION DISTRICT ALL-PURPOSE SEED MIX. REFER TO CHART. SEED TO BE APPLIED AT 4LBS/1,000 SF USING DRILL SEED PROCESS OR HYDRO-SEED PROCESS MINIMUM OR PER EL PASO GUIDELINES. SOIL SHALL BE AMENDED BREW-GRO BIOCOMP CLASS 1 (OR CITY APPROVED EQUAL) AT 2 C.Y./1000 SF TILLED INTO TOP 4-6" OF SOIL PRIOR TO SEEDING. REFER TO CHART 5-1 FOR IRRIGATED MIX.

DEPENDING ON WEATHER, SEED SHALL BE INSTALLED WITHIN THE FOLLOWING TIME FRAMES: SEPTEMBER 1 UNTIL CONSISTENT GROUND FREEZE FOR SPRING ESTABLISHMENT (DORMANT SEEDING); SPRING THAW UNTIL JUNE 1 FOR SPRING AND SUMMER ESTABLISHMENT (ACTIVE SEEDING).

FOR HYDRO-SEEDING ALL SEEDED AREAS SHALL RECEIVE NOT LESS THAN 1 TON PER ACRE (2000 LBS) OF VIRGIN WOOD CELLULOSE HYDRO-MULCH AND 100 LBS PER ACRE OF ORGANIC TACKIFIER.

SEEDED LANDSCAPE AREAS SHALL HAVE NO BARE AREAS LARGER THAN SIX (6) SQUARE INCHES 15 DAYS AFTER GERMINATION.

DRILL SEEDING: SEEDING EQUIPMENT USED FOR APPLYING SEED MIXTURES SHALL BE DESIGNED, MODIFIED OR EQUIPPED TO REGULATE THE APPLICATION RATE AND PLANTING DEPTH OF THE SEED MIXTURE. SEED SHALL BE UNIFORMLY DISTRIBUTED IN THE DRILL HOPPER DURING THE DRILLING OPERATION. A RANGELAND DRILL CAPABLE OF MIXING DIFFERENT SIZES AND WEIGHTS OF SEEDS SHALL BE USED. THE DRILL SHALL BE EQUIPPED WITH DOUBLE DISK FURROW OPENERS, DEPTH BANDS, PRESS WHEELS OR DRAG CHAINS.

THE SEED SHALL BE DRILLED APPROXIMATELY 3/4" INCH BELOW THE SOIL SURFACE. HALF OF THE TOTAL RATE OF SEED APPLICATION SHALL BE DRILLED IN 1 DIRECTION, WITH THE REMAINDER OF THE SEED RATE DRILLED AT 90 DEGREES FROM THE FIRST DIRECTION. DO NOT DRILL OR SOW SEED DURING HIGH WINDS OR WHEN THE GROUND IS FROZEN OR OTHERWISE UNABLE TO BE WORKED.

ALL SEEDED AREAS LESS THAN 3:1 SHALL RECEIVE NO LESS THAN 2 TONS PER ACRE (400 LBS) OF CERTIFIED WEED FREE STRAW MULCH. STRAW MULCH SHALL BE APPLIED IN A UNIFORM MANNER BY MULCH SPREADER OR BY HAND. STRAW MULCH SHALL BE CRIMPED OR ANCHORED INTO THE SEEDED IMMEDIATELY FOLLOWING SPREADING BY USING A MULCH TILLER (CRIMPER). MULCH TILLERS SHALL HAVE ROUND, NOTCHED BLADES SPACED 8-INCHES APART (MIN) AND SHALL HAVE SUFFICIENT WEIGHT TO FORCE THE VEGETATIVE MULCH A MINIMUM DEPTH OF 3-INCHES INTO THE SOIL. ALL MULCH TILLING SHALL BE DONE PERPENDICULAR TO THE FLOW-LINE OF THE SLOPE (ALONG CONTOURS). HAND CRIMPING SHALL BE PERFORMED ON AREAS WHERE MECHANICAL METHODS CANNOT BE USED.

MULCH SHALL BE APPLIED TO SEEDED AREAS (INCLUDING DAMP GROUND) WITHIN 24 HOURS FOLLOWING THE COMPLETION OF SEEDING OPERATIONS FOR THE AREA. MULCHING SHALL NOT BE PERFORMED DURING ADVERSE WEATHER CONDITIONS OR WHEN WIND PREVENTS UNIFORM DISTRIBUTION. APPLICATION SHALL BE IN A MANNER TO NOT SERIOUSLY DISTURB THE SEEDED SURFACE.

### NATIVE GRASS MANAGEMENT NOTE

ON-GOING MAINTENANCE RECOMMENDATIONS FOR NATIVE GRASS

WELL ESTABLISHED SEEDED LAWN SHALL BE A HEALTHY, WELL-ROOTED, EVEN-COLORED, AND FREE OF WEEDS, BARE AREAS, AND SURFACE IRREGULARITIES.

THE MATURE HEIGHT OF NATIVE GRASS IS EXPECTED TO BE MAINTAINED AT ABOUT 6" HIGH AND MOWED TO 3" ONCE ANNUALLY IN THE LATE WINTER OR EARLY SPRING, AND IRRIGATED ON REDUCED WATER SCHEDULE.

THE SUCCESS OF PERMANENT NATIVE GRASS SEEDING CAN RARELY BE EVALUATED ACCURATELY PRIOR TO THE END OF ITS SECOND FULL GROWING SEASON. SEEDING SUCCESS DEPENDS UPON CONTROL OF WEED COMPETITION DURING THE FIRST TWO GROWING SEASONS. IN ADDITION, THE SITE SHOULD BE MONITORED ANNUALLY FOR UNDESIRABLE PLANT SPECIES.

THE SITE SHOULD BE MONITORED FOR UNDESIRABLE PLANT SPECIES. IF WEED CONTROL NEEDS TO BE PERFORMED DURING THE FIRST YEAR OF PLANT GROWTH, UTILIZE ONE OF TWO METHODS. REGARDLESS OF WHICH METHOD OF WEED CONTROL IS USED, COMPLETE BEFORE FLOWERING OF WEED SEED HEADS. SINCE WEED SPECIES MAY DEVELOP MATURE SEED HEADS AT DIFFERENT TIME OF THE GROWING SEASON, WEED CONTROL EFFORTS WILL BE REQUIRED.

- HAND PULL NOXIOUS WEEDS, REMOVING AS MUCH OF THE ROOT SYSTEM AS POSSIBLE.
- USE WEED EATERS TO SELECTIVELY CUT OFF THE SEED HEADS OF NOXIOUS WEEDS. USE SELECTIVE BROADLEAF HERBICIDE SUCH AS 2-4-D WITH A BACKPACK SPRAYER OR WICK APPLICATOR. BE CAREFUL NOT TO APPLY HERBICIDE ON MORE THAN ONE SQUARE FOOT IN ANY GIVEN AREA. CONTRACTOR TO NOTIFY OWNER'S AUTHORIZED REPRESENTATIVE OF ANY SUSPECTED SOIL PROBLEMS AT THE END OF THE FIRST GROWING SEASON. BROADBAND APPLICATIONS OF HERBICIDE CAN BE COMPLETED AFTER NATIVE GRASS SPECIES REACH MATURE HEIGHT.

### MAINTENANCE NOTE

ON-GOING MAINTENANCE DURING CONSTRUCTION:

THE CONTRACTOR SHALL BE RESPONSIBLE FOR PROVIDING ON-GOING MAINTENANCE OF ALL COMPLETED LANDSCAPE AND IRRIGATION WORK AS DEFINED UNDER CONTRACT WITH OWNER.

BEGIN MAINTENANCE IMMEDIATELY AFTER PLANTING AND CONTINUE UNTIL LANDSCAPE WORK IS COMPLETED, ACCEPTED BY OWNER, AND IF REQUESTED A FORMAL MAINTENANCE PERIOD IS INITIATED. MAINTAIN LAWNS BY WATERING, FERTILIZING, WEEDING, MOWING, TRIMMING AND OTHER OPERATIONS SUCH AS ROLLING, REGARDING, REPLANTING AS REQUIRED THROUGH CONSTRUCTION PERIOD. REMULCH WITH NEW MULCH IN AREAS WHERE MULCH HAS BEEN DISTURBED BY CONSTRUCTION OPERATIONS SUFFICIENTLY TO NULLIFY ITS PURPOSE. CONTRACTOR SHALL REPAIR SEEDED AREAS DAMAGED BY TRAFFIC AND/OR VANDALISM DURING THE CONSTRUCTION PERIOD.

IF THE IRRIGATION SYSTEM IS NOT AVAILABLE FOR PROPER WATERING AT THE TIME OF INSTALLATION, PROVIDE AND MAINTAIN TEMPORARY PIPING, HOSES, AND LAWN WATERING EQUIPMENT AS REQUIRED TO CONVEY WATER FROM SOURCES AND TO KEEP THE LAWN AREAS UNIFORMLY MOIST AS REQUIRED FOR PROPER GROWTH. FAILURE OF THE IRRIGATION SYSTEM SHALL NOT RELIEVE THE INSTALLER OF THE RESPONSIBILITY TO PROVIDE THE REQUIRED WATER. COORDINATE WITH OWNER.

ONE-YEAR WARRANTY

AS AGREED WITH OWNER, CONTRACTOR SHALL PROVIDE ONE-YEAR WARRANTY ON ALL PLANT MATERIAL, GRASSES AND IRRIGATION SYSTEM.

REPLACEMENT OF DEAD, DISEASED OR SUBSTANTIALLY DAMAGED PLANT MATERIALS SHALL BE OF THE SAME OR SIMILAR TYPE AS SET FORTH IN THE LANDSCAPE PLAN. REPLACEMENT SHALL BE MADE IN A TIME PERIOD NOT EXCEEDING 15 DAYS. PLANT MATERIAL NEEDING REPLACEMENT DURING WINTER MONTHS SHALL BE REPLACED AT THE START OF THE NEXT GROWING SEASON.

THE OWNER OF THIS PROPERTY AND ANY FUTURE OWNERS SHALL BE RESPONSIBLE FOR THE PROPER LANDSCAPE AND IRRIGATION SYSTEM MAINTENANCE OF THIS SITE AND ANY RIGHT-OF-WAY AREAS BETWEEN THE CURB AND PROPERTY BOUNDARIES OF THIS SITE. MAINTENANCE OF THIS INCLUDES, BUT IS NOT LIMITED TO, IRRIGATION INSPECTIONS AND ADJUSTMENTS, IRRIGATION SYSTEM SHUT DOWN AND START UP, IRRIGATION LEAK REPAIR, LANDSCAPE WEEDING, MOWING, SEEDING, FERTILIZING, WOOD MULCH AND ROCK ADDITIONS, PRUNING AND PLANT MATERIAL REPLACEMENTS. ALL MAINTENANCE SHALL BE DONE IN ACCORDANCE WITH THE ALCC SPECIFICATIONS HANDBOOK REV EDITION 2007. OWNER SHOULD CONTACT LANDSCAPE CONTRACTOR OR LANDSCAPE ARCHITECT REGARDING ANY QUESTIONS RELATING TO THE LANDSCAPE OR IRRIGATION SYSTEM.

### SOD INSTALLATION NOTE

SOIL PREPARATION FOR SODDED AREAS

- RIP EXISTING SOIL TO A DEPTH OF NINE (9) INCHES MINIMUM IN ONE DIRECTION USING AN AGRICULTURAL RIPPER WITH TINES SPACED NO FURTHER THAN EIGHTEEN (18) INCHES APART. AREAS ADJACENT TO WALKS, STRUCTURES, CURBS, ETC., WHERE THE USE OF LARGE MECHANICAL EQUIPMENT IS DIFFICULT SHALL BE WORKED WITH SMALLER EQUIPMENT OR BY HAND.
- REMOVE ALL RUBBLE, STONES AND EXTRANEIOUS MATERIAL OVER TWO (2) INCHES IN DIAMETER FROM THE SITE.
- APPLY THE FOLLOWING AMENDMENTS: APPLY CLASS 1 BREW GROW BIO-COMP MATERIAL AT A RATE OF 4 CUBIC YARDS PER 1000 SQ.FT. OF SOIL AREA. DISK (TILL) COMPOST SOIL TO A DEPTH OF 6" (INCHES).

BLUEGRASS SOD

- PROVIDE HEALTHY, FIELD GROWN SOD, FREE FROM OTHER GRASSES, WEEDS, INSECTS AND THEIR EGGS, DISEASES, STONES AND DEBRIS, AND A MINIMUM OF ONE (1) YEAR OLD. FURNISH FROM A SOD FARM WHERE IT HAS RECEIVED REGULAR WATERING, MOWING, FERTILIZING, WEED CONTROL AND SPRAYING.
- MOW SOD TO 1 1/2" TO 2" HEIGHT PRIOR TO CUTTING AND CUT TO A UNIFORM THICKNESS OF 1/2" TO 1". DELIVER IN ROLLS 6' LONG AND 18" WIDE. SMALL, IRREGULAR OR BROKEN PIECES OF SOD WILL NOT BE ACCEPTED. DO NOT CUT MORE SOD THAN CAN BE PUT IN PLACE AT THE SITE THE SAME DAY.
- DELIVER SOD TO THE SITE WITHIN 24 HOURS OF HARVESTING, AND PROTECT FROM DRYING OUT, EXPOSURE OF ROOTS TO THE SUN AND OTHER INJURY.

SOD INSTALLATION

- AFTER SOIL PREPARATION, ROLL THE AREA TO AN EVENLY COMPACTED, FIRM SOIL BED. REMOVE HARD AND SOFT AREAS. SCARIFY SURFACE TO A DEPTH OF 3/8 INCH.
- LAY SOD SMOOTHLY, EDGE TO EDGE, AND WITH STAGGERED JOINTS. BUTT EDGES TIGHTLY. LAY WITHIN EIGHT (8) HOURS AFTER DELIVERY.
- WATER SOD LIGHTLY AS LAYING PROGRESSES TO PREVENT DRYING OF SOD.
- ROLL SOD WITH A LIGHT ROLLER DIAGONALLY, LEVELING IRREGULARITIES AND SEALING JOINTS.
- KEEP THE SOIL BED MOIST DURING LAYING OF SOD.
- NEWLY INSTALLED SOD SHALL BE WATERED WITH 1/2 INCH OF WATER PER DAY FOR THE FIRST 3 DAYS, FILLING THE WATER HOLDING CAPACITY OF THE TOP 4-6 INCHES OF THE SOIL. TOTAL AMOUNT OF WATER SHOULD BE SPLIT UP OVER 2 OR 3 WATERING PERIODS EACH DAY.
- WEEK 1: AFTER INSTALLATION, WATER NEW TURF 1/2" TO 1-1/4" OF WATER PER DAY FOR THE FIRST 7 DAYS SPLIT UP OVER 4 OR 5 WATERING PERIODS EACH DAY. THE WARMER THE TEMPERATURE, THE MORE WATER YOU NEED TO APPLY.
- WEEK 2: AFTER THE FIRST 7 DAYS, WATER AT THE RATE OF 1/2" PER DAY FOR 7 DAYS; SPLIT UP OVER 2-3 WATERING PERIODS EACH DAY.
- WEEK 3: IF WATERING RESTRICTIONS ALLOW, WATER 1/2" PER DAY EVERY OTHER DAY FOR 7 DAYS. AFTER THE FIRST TWO OR THREE WEEKS, REVERT TO WATERING 1-2 TIMES PER WEEK AS LOCAL WATERING RESTRICTIONS ALLOW.
- KENTUCKY BLUEGRASS TURF: 3.1 LBS NITROGEN PER 1,000 SF: APPLY ABOUT 1 LB OF RECOMMENDED NITROGEN IN LATE SUMMER. APPLY HALF OF REMAINING NITROGEN REQUIRED IN MID-FALL, HALF IN MID SPRING. FOR HIGH MAINTENANCE TURF, APPLY ABOUT 1 LB OF THE RECOMMENDED NITROGEN IN EARLY SUMMER. TO OBTAIN 1 LB OF ACTUAL NITROGEN, APPLY 3 TO 4 LB OF 34-0-0, 5 LB OF 20-0-0, 10 LB OF 10-0-0, OR SIMILAR FERTILIZERS.

ON-GOING MAINTENANCE RECOMMENDATIONS FOR SOD BLUEGRASS LAWN

WELL ESTABLISHED LAWN SHALL BE A HEALTHY, WELL-ROOTED, EVEN-COLORED, FREE OF WEEDS, OPEN JOINTS, BARE AREAS, AND SURFACE IRREGULARITIES.

MOW SODDED LAWN AS SOON AS THERE IS ENOUGH TOP GROWTH TO CUT WITH MOWER SET AT 3" HEIGHT. DO NOT CUT MORE THAN 1/3 LENGTH OF THE GRASS BLADE AT ANY ONE MOWING. DO NOT MOW LESS THAN 3" OFF WHEN GRASS IS WET. REMOVE ALL HEAVY GRASS CLIPPING IMMEDIATELY AFTER MOWING.

### UTILITIES NOTE

VERIFY LOCATION AND DEPTH OF ALL UNDERGROUND UTILITIES PRIOR TO START OF WORK. CALL 811 FOR UTILITY LOCATES. TREE TRUNK PLACEMENT SHALL BE 6" MINIMUM DISTANCE FROM ANY GAS OR ELECTRIC AND 10' FROM GAS MAINS RATED AT 150PSI. FOR SANITARY SEWER AND WATER MAINLINES TREES SHALL NOT BE LOCATED WITHIN EASEMENTS AND WITHIN 15' OF ANY MAINLINE. ANY CONFLICT BETWEEN TREE LOCATIONS AND UTILITIES SHOWN ON PLANS SHALL BE RESOLVED WITH GENERAL CONTRACTOR PRIOR TO PLANTING. ALL ELECTRICAL WALKS AND TRANSFORMERS SHALL BE KEPT CLEAR FROM PLANT MATERIAL PER COLORADO SPRINGS UTILITIES GUIDELINES "LANDSCAPING AROUND ELECTRICAL EQUIPMENT". SEE COLORADO SPRINGS UTILITIES CONSTRUCTION STANDARD DRAWINGS 18-302 FOR SPECIFIC CLEARANCE REQUIREMENTS. ALL SHRUBS TO BE LOCATED 3' CLEAR OF ALL FIRE HYDRANTS AT MATURE SIZE.

### DOCUMENT NOTE

IRRESPECTIVE OF ANY OTHER TERM IN THIS DOCUMENT, LANDSCAPE ARCHITECT SHALL NOT CONTROL OR BE RESPONSIBLE FOR CONSTRUCTION MEANS, METHODS, TECHNIQUES, SCHEDULES, SEQUENCES OR PROCEDURES, OR FOR CONSTRUCTION SAFETY OR ANY OTHER RELATED PROGRAMS, OR FOR ANOTHER PARTIES' ERRORS OR OMISSIONS OR FOR ANOTHER PARTIES' FAILURE TO COMPLETE THEIR WORK OR SERVICES IN ACCORDANCE WITH LANDSCAPE ARCHITECT'S DOCUMENTS.



Know what's below.  
Call before you dig.

**HIGHER GROUND DESIGNS, INC.**  
LANDSCAPE ARCHITECTURE, PLANNING & IRRIGATION DESIGN

5350 NORTH ACADEMY BLVD., STE. 207  
COLORADO SPRINGS, CO 80916  
Phone 719-477-1646  
Fax 719-586-1122



THE COMMONS AT FALCON FIELD

FILING NO. 1 & 2  
COLORADO SPRINGS, CO

THESE DRAWINGS ARE THE PROPERTY OF HIGHER GROUND DESIGNS, INC. AND SHALL NOT BE USED FOR ANY OTHER PROJECT WITHOUT THE AUTHORIZATION BY HIGHER GROUND DESIGNS, INC. THESE DRAWINGS ARE NOT FOR CONSTRUCTION.

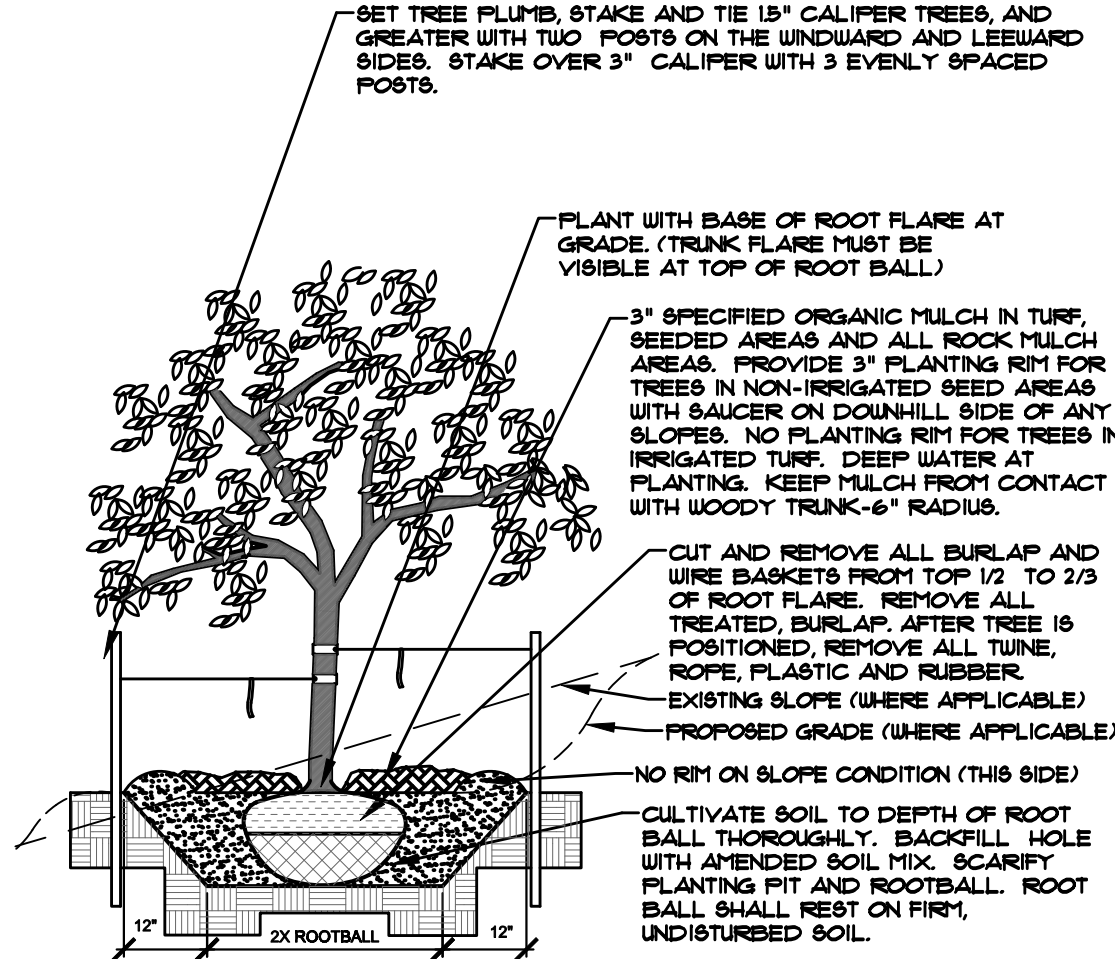
PREPARED FOR:  
DREXEL, BARRELL & CO.

NOT FOR CONSTRUCTION

JOB NUMBER	1223-24
REVISIONS	
ORIGINAL DATE	11-13-24
DRAWN BY	JM
DESCRIPTION	LANDSCAPE NOTES
SHEET NO.	L1.8

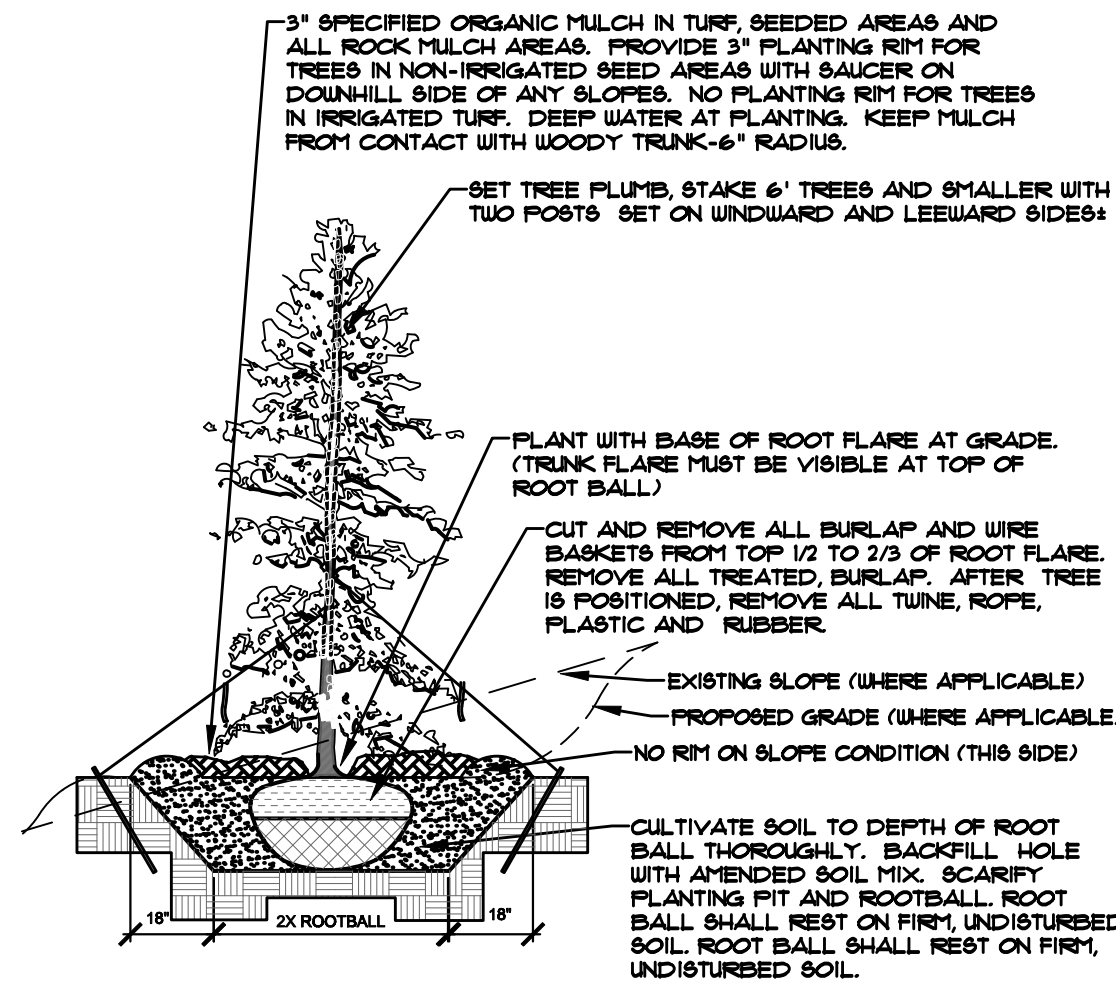


- NOTES:
- MARK NORTH SIDE OF TREE AT NURSERY AND ALIGN TREE TO NORTH WHEN PLANTING.
  - DO NOT REMOVE OR CUT LEADER.
  - PRUNE ONLY DEAD, BROKEN, CROSSING, OR WEAK BRANCHES (OR NARROW CROTCHES) IMMEDIATELY PRIOR TO PLANTING. DO NOT REMOVE TERMINAL BUDS THAT EXTEND TO TREE CROWN.
  - NO STRUCTURAL PRUNING OF TREE UNTIL AFTER ESTABLISHMENT PERIOD (2 GROWING SEASONS).
  - REMOVE ANY DOUBLE LEADER UNLESS OTHERWISE DIRECTED BY OWNER'S REPRESENTATIVE.
  - KEEP PLANTS MOIST AND SHADED UNTIL PLANTING. AVOID FALL PLANTING IF POSSIBLE.
  - AMENDED BACK FILL SHALL BE 10% SOIL FROM PLANTING PIT AND 30% ORGANIC MATERIAL.
  - WRAP TRUNK ON EXPOSED SITES OR SPECIES WITH THIN BARK USE ELECTRICAL TAPE, NOT TURF WRAP.
  - DO NOT FERTILIZE TREE DURING THE FIRST GROWING SEASON.
  - COORDINATE WITH CITY FORESTRY FOR CURRENT INSECT & DISEASE RECOMMENDATIONS PRIOR TO PLANTING.



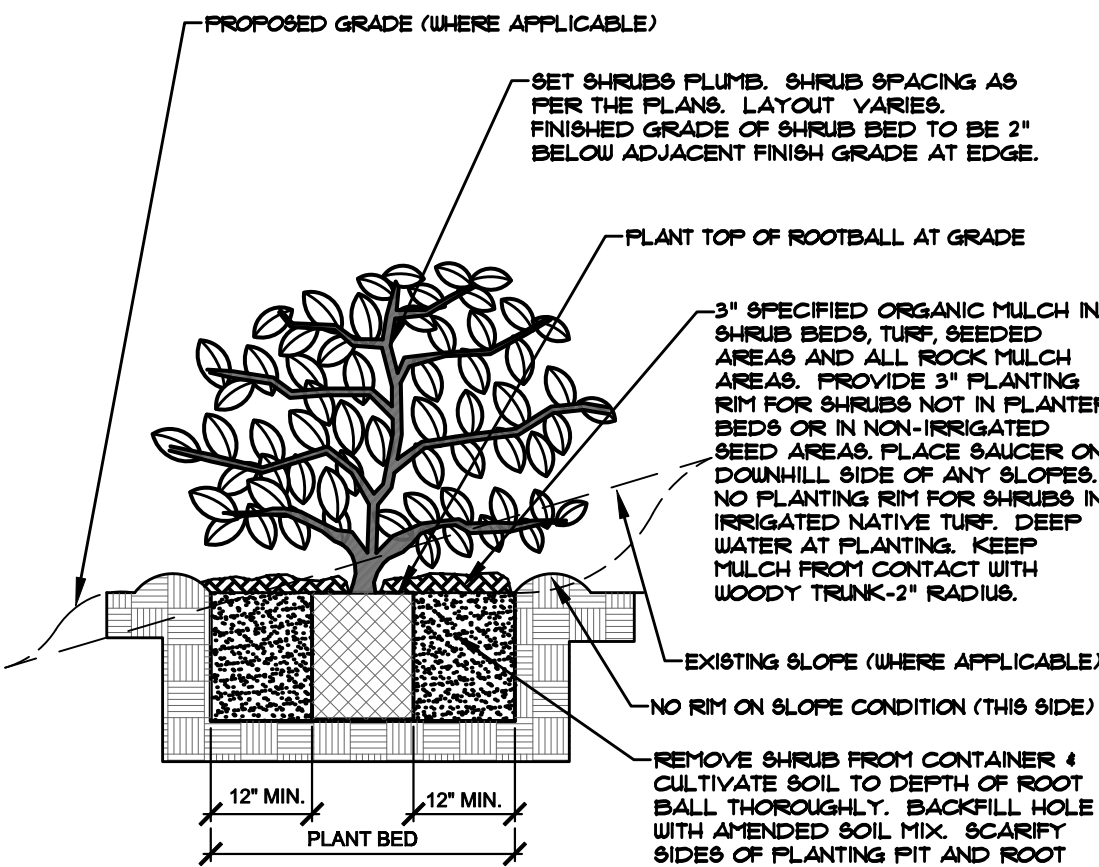
**A** DECIDUOUS TREE PLANTING DETAIL  
NOT TO SCALE

- NOTES:
- MARK NORTH SIDE OF TREE AT NURSERY AND ALIGN TREE TO NORTH WHEN PLANTING.
  - DO NOT REMOVE OR CUT LEADER.
  - PRUNE ONLY DEAD, BROKEN, CROSSING, OR WEAK BRANCHES (OR NARROW CROTCHES) IMMEDIATELY PRIOR TO PLANTING. DO NOT REMOVE TERMINAL BUDS THAT EXTEND TO TREE CROWN.
  - NO STRUCTURAL PRUNING OF TREE UNTIL AFTER ESTABLISHMENT PERIOD (2 GROWING SEASONS).
  - REMOVE ANY DOUBLE LEADER UNLESS OTHERWISE DIRECTED BY OWNER'S REPRESENTATIVE.
  - KEEP PLANTS MOIST AND SHADED UNTIL PLANTING. AVOID FALL PLANTING IF POSSIBLE.
  - AMENDED BACK FILL SHALL BE 10% SOIL FROM PLANTING PIT AND 30% ORGANIC MATERIAL.
  - WRAP TRUNK ON EXPOSED SITES OR SPECIES WITH THIN BARK USE ELECTRICAL TAPE, NOT TURF WRAP.
  - DO NOT FERTILIZE TREE DURING THE FIRST GROWING SEASON.
  - COORDINATE WITH CITY FORESTRY FOR CURRENT INSECT & DISEASE RECOMMENDATIONS PRIOR TO PLANTING.



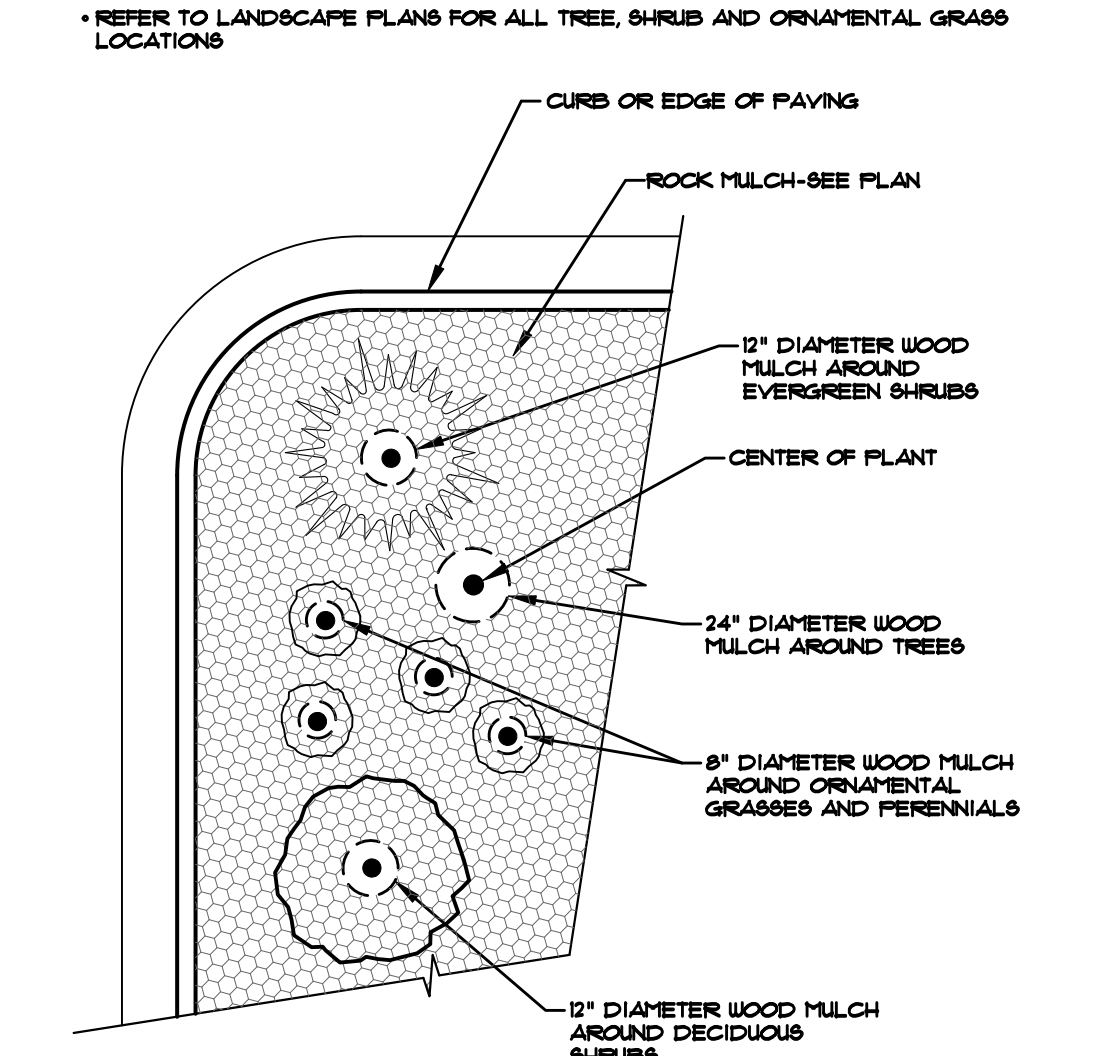
**B** EVERGREEN TREE PLANTING DETAIL  
NOT TO SCALE

- NOTES:
- PRUNE ONLY DEAD OR BROKEN BRANCHES IMMEDIATELY PRIOR TO PLANTING.
  - KEEP PLANTS MOIST AND SHADED UNTIL PLANTING.
  - DO NOT FERTILIZE FOR AT LEAST ONE GROWING SEASON.
  - AMENDED BACK FILL SHALL BE 10% SOIL FROM PLANTING PIT AND 30% ORGANIC MATERIAL.
  - FOR ROOT END AT BOTTOM OF BALL, SPLIT ROOT BALL VERTICALLY FROM BOTTOM HALFWAY TO TOP. SPREAD THE TWO HALVES OVER A MOUND OF SOIL IN PLANTING PIT.
  - FOR POT BOUND PLANTS ONLY: MAKE 4-5 VERTICAL CUTS IN ROOT BALL 1" DEEP. PLANT IMMEDIATELY.

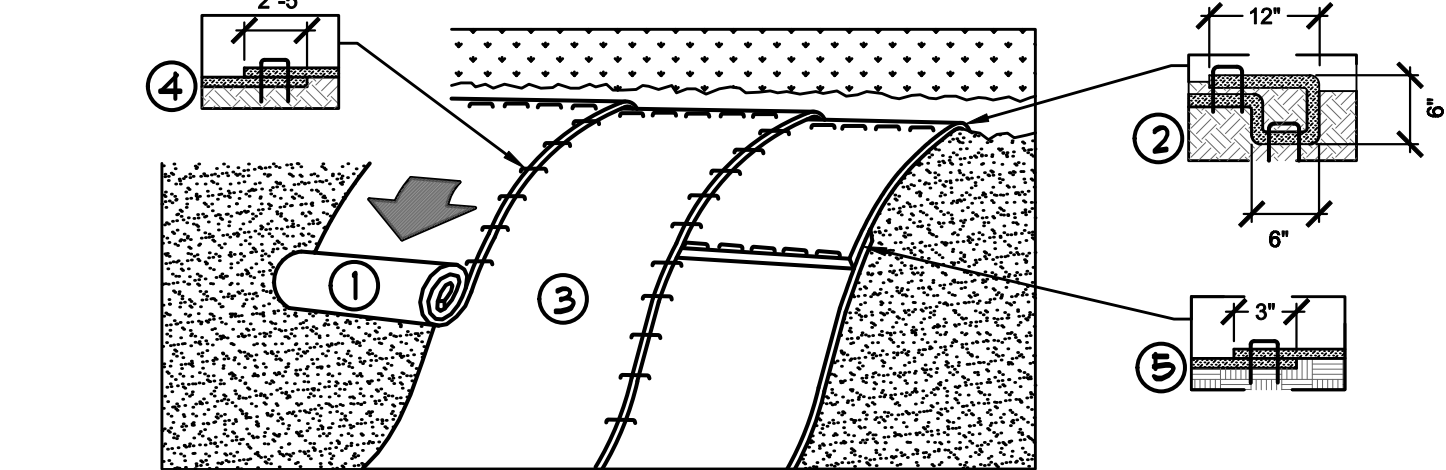


**C** SHRUB PLANTING DETAIL  
NOT TO SCALE

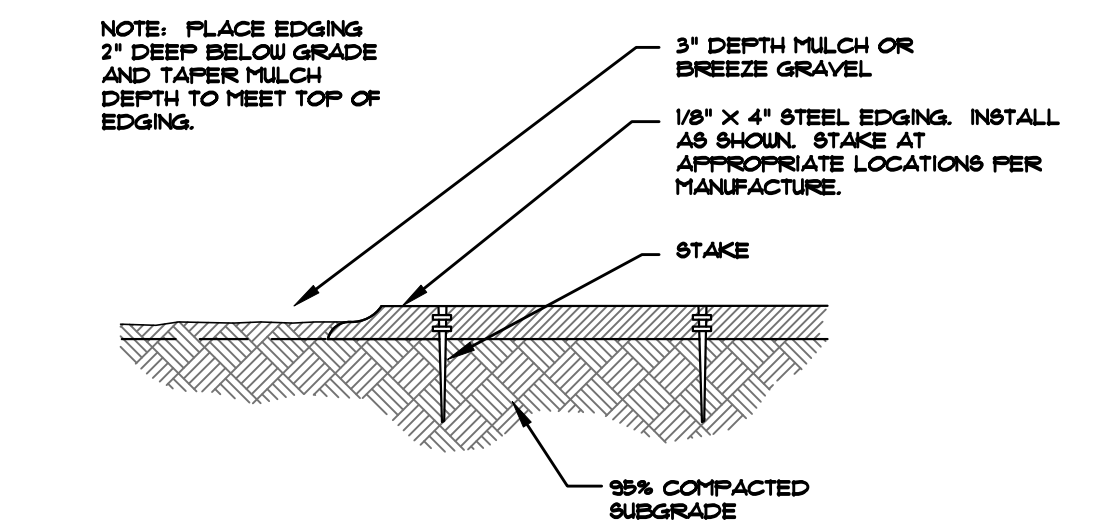
- NOTES:
- CONTRACTOR TO INSTALL WOOD MULCH RINGS AROUND LANDSCAPING AS SHOWN BELOW FOR ALL TREES, SHRUBS, PERENNIALS AND ORNAMENTAL GRASSES INSTALLED IN ROCK MULCHED AREAS. ROCK SHALL BE CLEAR FROM SHRUBS IN UNIFORM CIRCLE AND WOOD MULCH APPLIED AT 2" DEPTH. SEE CONSTRUCTION DETAILS FOR INSTALLATION PROCESS.
  - REFER TO LANDSCAPE PLANS FOR ALL TREE, SHRUB AND ORNAMENTAL GRASS LOCATIONS



**D** TYPICAL PLANT MATERIAL TREATMENT  
NOT TO SCALE



**E** EROSION CONTROL  
NOT TO SCALE



**F** STEEL EDGING  
NOT TO SCALE

SEED MIX 'B'

Chapter 5  
Native Vegetation Requirements and Guidelines

Table 5-1. El Paso County Conservation District All-Purpose Mix for Upland, Transition and Permanent Control Measure Areas

Common Name	Scientific Name	Growth Season / Form	% of Mix	Pounds PLS		
				Irrigated broadcast Irrigated hydroseeded	Non-irrigated broadcast Non-irrigated hydroseeded Irrigated drilled	Non-irrigated drilled
Bluestem, big	<i>Andropogon gerardii</i>	Warm, sod	20	4.4	2.2	1.1
Grass, blue	<i>Bouteloua gracilis</i>	Warm, bunch	10	0.5	0.25	0.13
Green needlegrass	<i>Nassella viridula</i>	Cool, bunch	10	2	1	0.5
Wheatgrass, western	<i>Pascopyrum smithii</i>	Cool, sod	20	6.4	3.2	1.6
Grass, sideoats	<i>Bouteloua curtipendula</i>	Warm, bunch	10	2	1	0.5
Switchgrass	<i>Panicum virgatum</i>	Warm, bunch/sod	10	0.8	0.4	0.2
Prairie sandreed	<i>Calamovilfa longifolia</i>	Warm, sod	10	1.2	0.6	0.3
Yellow indiagrass	<i>Sorghastrum nutans</i>	Warm, sod	10	2	1	0.5
Seed rate (lbs PLS/acre)				19.3	9.7	4.8

<sup>1</sup>For portions of facilities located near or on the bottom or where wet soil conditions occur. Planting of potted nursery stock wetland plants 2-foot on-center is recommended for sites with wetland hydrology.

<sup>2</sup>Species that will do well in the bottom of pond areas.

SEED MIX 'A'

Chapter 5  
Native Vegetation Requirements and Guidelines

Table 5-2. El Paso County All-Purpose Low Grow Mix for Upland and Transition Areas

Common Name	Scientific Name	Growth Season / Form	% of Mix	Pounds PLS		
				Irrigated broadcast Irrigated hydroseeded	Non-irrigated broadcast Non-irrigated hydroseeded Irrigated drilled	Non-irrigated drilled
Buffalograss	<i>Buchloe dactyloides</i>	Warm, sod	25	9.6	4.8	2.4
Grass, blue	<i>Bouteloua gracilis</i>	Warm, bunch	20	10.8	5.4	2.7
Grass, sideoats	<i>Bouteloua curtipendula</i>	Warm, bunch	29	5.6	2.8	1.4
Green needlegrass	<i>Nassella viridula</i>	Cool, bunch	5	3.2	1.6	0.8
Wheatgrass, western	<i>Pascopyrum smithii</i>	Cool, sod	20	12	6	3
Dropseed, sand	<i>Sporobolus cryptandrus</i>	Warm, bunch	1	0.8	0.4	0.2
Seed rate (lbs PLS/acre)				42	21	10.3

UTILITIES NOTE

VERIFY LOCATION AND DEPTH OF ALL UNDERGROUND UTILITIES PRIOR TO START OF WORK. CALL 811 FOR UTILITY LOCATES. TREE TRUNK PLACEMENT SHALL BE 6" MINIMUM DISTANCE FROM ANY GAS OR ELECTRIC AND 10' FROM GAS MAINS RATED AT 150PSI. FOR SANITARY SEWER AND WATER MAINLINES TREES SHALL NOT BE LOCATED WITHIN EASEMENTS AND WITHIN 15' OF ANY MAINLINE. ANY CONFLICT BETWEEN TREE LOCATIONS AND UTILITIES SHOWN ON PLANS SHALL BE RESOLVED WITH GENERAL CONTRACTOR PRIOR TO PLANTING. ALL ELECTRICAL VAULTS AND TRANSFORMERS SHALL BE KEPT CLEAR FROM PLANT MATERIAL PER COLORADO SPRINGS UTILITIES GUIDELINES "LANDSCAPING AROUND ELECTRICAL EQUIPMENT". SEE COLORADO SPRINGS UTILITIES CONSTRUCTION STANDARD DRAWINGS 18-302 FOR SPECIFIC CLEARANCE REQUIREMENTS. ALL SHRUBS TO BE LOCATED 3' CLEAR OF ALL FIRE HYDRANTS AT MATURE SIZE.

DOCUMENT NOTE

IRRESPECTIVE OF ANY OTHER TERM IN THIS DOCUMENT, LANDSCAPE ARCHITECT SHALL NOT CONTROL, OR BE RESPONSIBLE FOR CONSTRUCTION MEANS, METHODS, TECHNIQUES, SCHEDULES, SEQUENCES OR PROCEDURES, OR FOR CONSTRUCTION SAFETY OR ANY OTHER RELATED PROGRAMS, OR FOR ANY OTHER PARTIES' ERRORS OR OMISSIONS OR FOR ANOTHER PARTIES' FAILURE TO COMPLETE THEIR WORK OR SERVICES IN ACCORDANCE WITH LANDSCAPE ARCHITECT'S DOCUMENTS.



Know what's below.  
Call before you dig.

HIGHER GROUND DESIGNS, INC.  
LANDSCAPE ARCHITECTURE, PLANNING & IRRIGATION DESIGN

5350 NORTH ACADEMY BLVD., STE. 207  
COLORADO SPRINGS, CO 80918  
Phone 719-477-1648  
Fax 719-586-1122



THE COMMONS AT FALCON FIELD  
FILING NO. 1 & 2  
COLORADO SPRINGS, CO

THESE DRAWINGS ARE THE PROPERTY OF HIGHER GROUND DESIGNS, INC. AND SHALL NOT BE USED FOR ANY OTHER PROJECT WITHOUT THE AUTHORIZATION OF HIGHER GROUND DESIGNS, INC. THESE DRAWINGS ARE NOT FOR CONSTRUCTION.

PREPARED FOR:  
DREXEL, BARRELL & CO.

NOT FOR CONSTRUCTION	JOB NUMBER	1223-24
	REVISIONS	
	ORIGINAL DATE	11-13-24
	DRAWN BY	JM
	DESCRIPTION	LANDSCAPE DETAILS
	SHEET NO.	L1.9