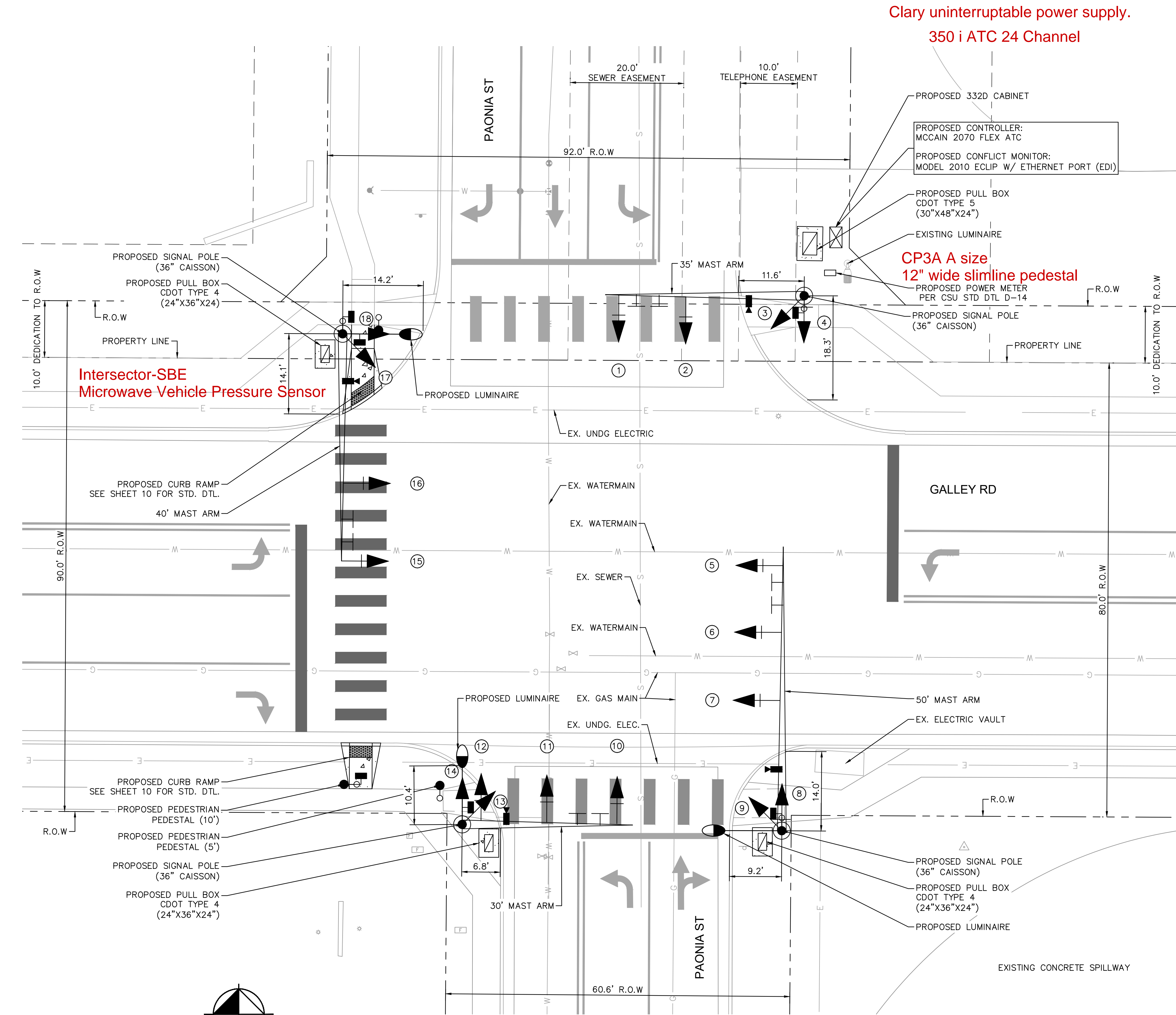


K:\COS\_LA\196140002 - Cimarron Hills\Phase 2\CADD\PlanSheets\SIG\196140002 - SIG\_SIGNAL.dwg Schmelbach, Ryan 4/17/2023 6:07 PM



Clary uninterruptible power supply.  
350 i ATC 24 Channel

CP3A A size  
12" wide slimline pedestal

Intersector-SBE  
Microwave Vehicle Pressure Sensor

**NOTES:**

1. MAST ARMS, CAISSON DIAMETER, AND CAISSON DEPTHS WERE DETERMINED PER CDOT STANDARD DETAIL S-614-40A
2. PEDESTRIAN PUSH BUTTON ASSEMBLIES ARE TO BE CONSTRUCTED PER CDOT STANDARD S-614-09
3. ALL PEDESTALS AND PUSH BUTTONS SHALL BE LOCATED IN THE CLEAR SPACE PER S-614-45
4. PULL BOXES SHALL BE PLACED PER CDOT STANDARD DETAIL S-614-43
5. TOP OF CAISSON SHALL BE FLUSH WITH SIDEWALK IF DIRECTLY ADJACENT TO SIDEWALK OR A MINIMUM OF 2" ABOVE THE LANDSCAPING
6. SEE SHEET 9 FOR PUSH BUTTON PROXIMITY DETAIL

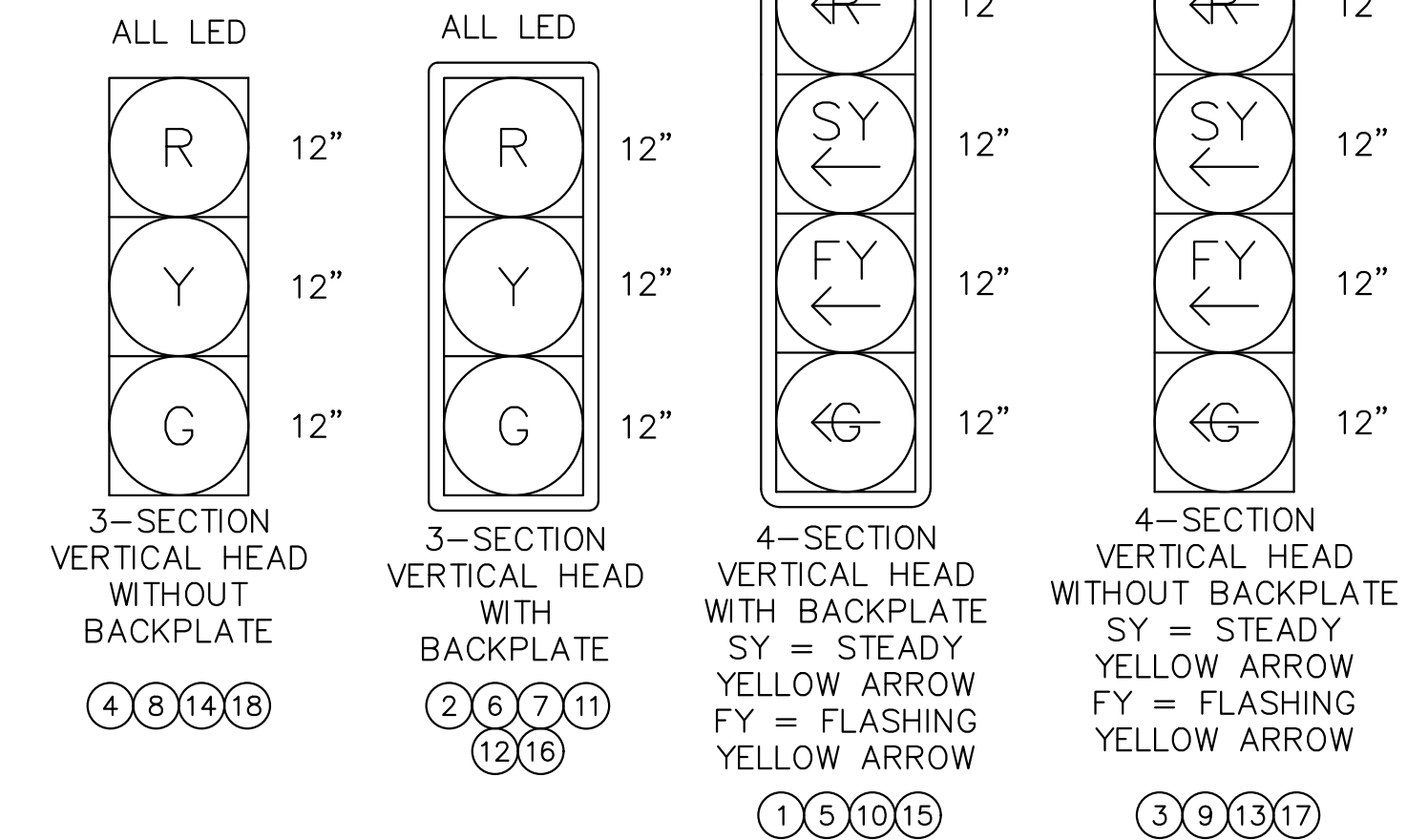
**TRAFFIC SIGNAL LEGEND**

- ☒ CONTROLLER
- ☒ PULL BOX (CDOT TYPE 4 & TYPE 5)
- ➔ SIGNAL HEAD (LED)
- ☐ POWER METER PEDESTAL
- ⚡ PEDESTRIAN HEAD **with countdown**
- ⚡ PEDESTRIAN PUSH BUTTON **Gen 4 Audible (ins23TN1-B-ES)**
- 📷 VEHICLE DETECTION SYSTEM (SINGLE CAMERA) **Intersector-SBE + Boards (4 outputs, single cabinet slot)**
- ⊥ OVERHEAD MOUNTED SIGN
- 📶 MAST ARM & SIGNAL POLE
- PEDESTAL/PUSHBUTTON POLE
- 💡 LUMINAIRE (LED)
- CONDUIT

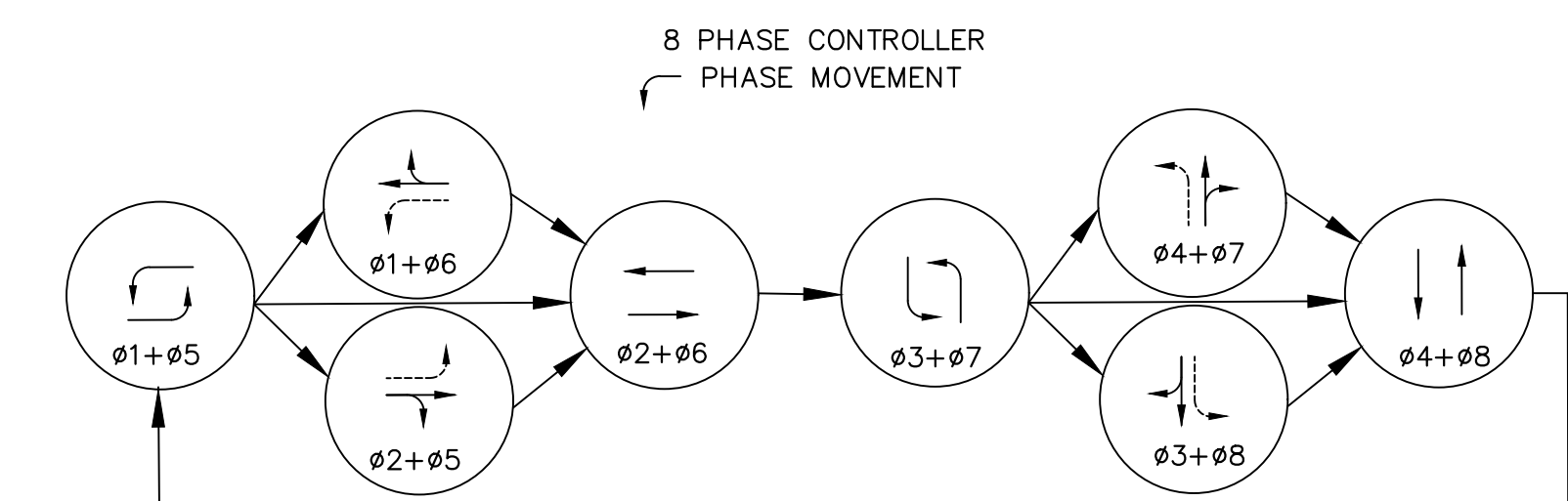
**UTILITY LEGEND**

- G — EXISTING UNDERGROUND NATURAL GAS
- E — EXISTING UNDERGROUND ELECTRIC
- S — EXISTING SANITARY SEWER
- W — EXISTING WATER MAIN

**TRAFFIC SIGNAL FACE LEGEND**



**PHASING DIAGRAM**



**Kimley»Horn**

2023 KIMLEY-HORN AND ASSOCIATES, INC.  
2 North Nevada Avenue, Suite 900  
Colorado Springs, Colorado 80903 (719) 453-0180

DESIGNED BY: KRK  
DRAWN BY: RES  
CHECKED BY: EJJ  
DATE: 04/17/2023

**SOLACE APARTMENTS FILING NO. 2**  
CONSTRUCTION DOCUMENTS  
GALLEY RD & PAONIA ST - TRAFFIC SIGNAL PLANS  
SIGNAL PLAN

**PRELIMINARY**  
FOR REVIEW ONLY  
NOT FOR CONSTRUCTION  
**Kimley»Horn**  
Kimley-Horn and Associates, Inc.

PROJECT NO.  
096668009


SHEET  
7

NO.	REVISION	BY	DATE	APPR

McCain ATC Cabinet

**El Paso County Traffic Signal Component List  
03-Feb-2022**

**Cabinet and Components List**

1. McCain Cabinet, 350i ATC 24 Channel FITA 16 Channel FOTA and ADU
2. Controller, Flex, Rack Mount, C1 Connector, with Omni Software
3. Clary Uninterruptible Power Supply SP1250 LX, 6 Battery, 302C No SNMP, w/ Battery Drawer
4. DYMEC 3170 EMX Managed Industrial Ethernet Switch 8 x 10/100/100 TX Port
5. Microhard Bullet LTE-NA Cellular Gateway
6. iNS29UN1-B-ES - Black iNS-Universal Navigator, 9x12 R10-3b Sign, No Braille, w/ Custom Voice, External Speaker, 2-Wire Push Button Station 
- iNS23TN1-B-ES - Black iNS-Universal Navigator, 9x15 R10-3e Sign, No Braille, w/ Custom Voice, External Speaker, 2-Wire Push Button Station

**External Components**

*delete*  
*External Speaker*

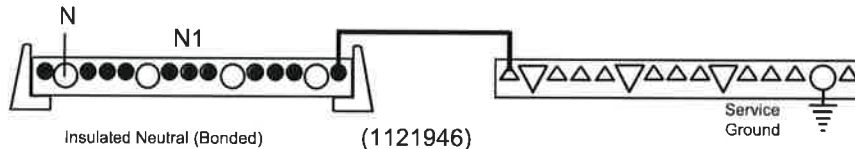
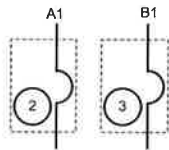
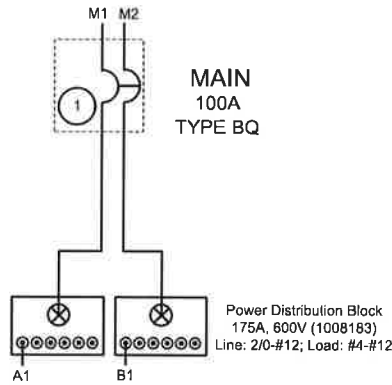
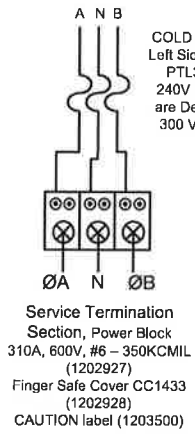
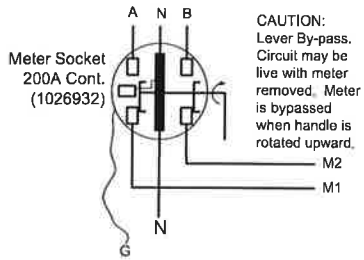
1. Intersector-SBE, Microwave Vehicle Presence Sensor 2.0
2. Intersector Interface Board, 4 Outputs, Single Cabinet Slot
3. Ethernet Surge Protection Citel, RJ45, MJ8-POE-A
4. CAT5E Outdoor Cable, CMXT 350 MHz, Solid, 24 AWG, Foil Waterproof Tape 1000 Ft/Roll
5. Signal Heads, 12", 1W3S, 1W4S, 1W5S with Visors, LED Balls and LED Arrows
6. Backplates w/ 1 1/2" Reflective Tape
7. Pedestrian Signal Head (16) with Countdown Module
8. Pelco Poles, Steel, Black, 5ft and 10ft with Base, Collar, Cap and Anchor Bolts
9. AXIS Q6074-E PTZ Network Camera
10. AXIS T91L61 Wall-and-Pole Mount and AXIS Steel Straps TX30

Catalog Number:

**CP3A51C16AAPCSXCCOD1**

120/240 VAC, 1-phase, 3-wire; 100 Amps Maximum, (see Main circuit breaker rating)  
Rainproof - Type 3R, Aluminum Enclosure, painted GRAY  
Enclosed Industrial Control - Suitable ONLY for Use as Service Equipment

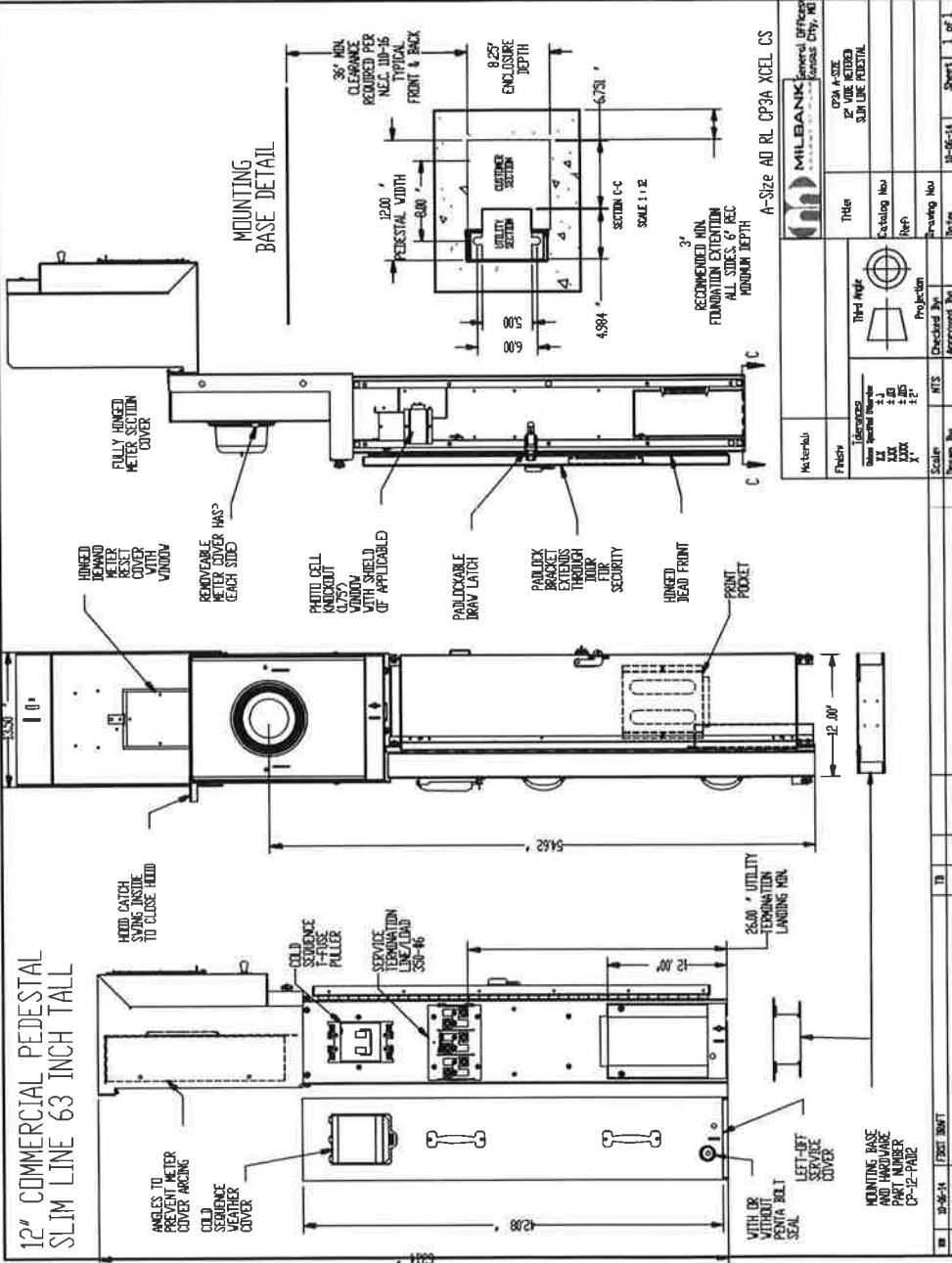
Dead Front - 1189639



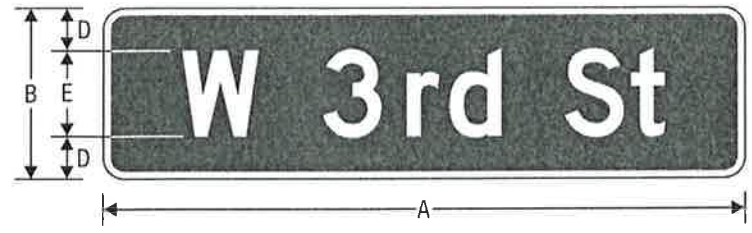
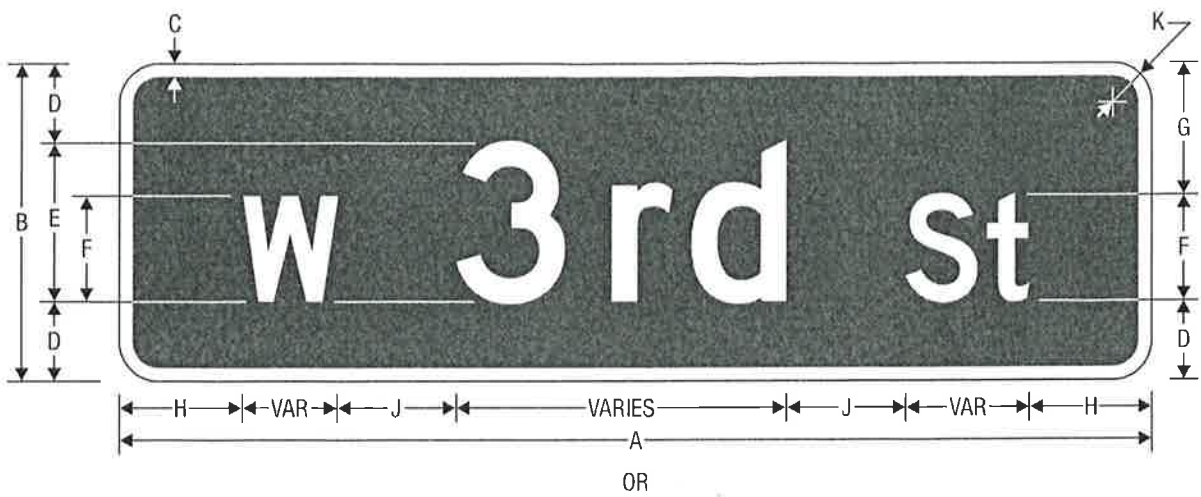
**BONDED NEUTRAL, REMOVE NEUTRAL LOAD  
CONDUCTORS FOR TEST PURPOSES ONLY**



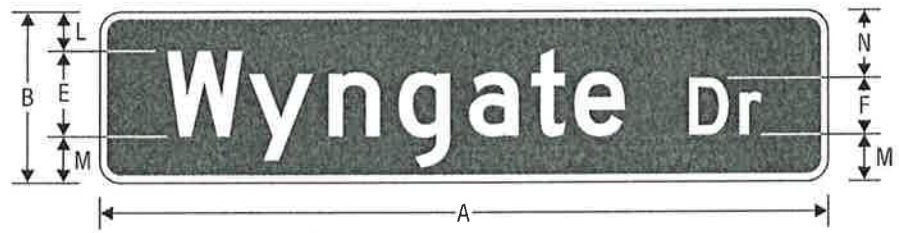
A-Size AD RL CP3A XCEL CS



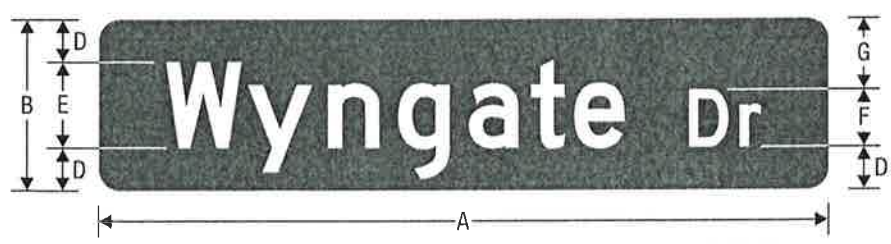




D3-1 (Sheet 1 of 3)  
Street Name Sign



D3-1 – PRINCIPAL LEGEND WITH DESCENDING STROKES



D3-1 – WITHOUT BORDER, PRINCIPAL LEGEND WITH OR WITHOUT DESCENDING STROKES

	A	B	C	D	E	F	G	H	J	K	L	M	N	
	VAR	8	0.375	2	4 D	3 D	3	3 (MIN)	3	1	1.75	2.25	2.75	1.5 D
<b>C</b>	VAR	12	0.5	3	6 D	4 D	5	4.5 (MIN)	4.5	1.5	2.75	3.25	4.75	3 D
	VAR	18	0.75	5	8 D	5.33 D	7.67	5.33 (MIN)	6	1.875	5	5	7.67	
	VAR	24	1	6	12 D	8 D	10	9 (MIN)	9	2.25	5.5	6.5	9.5	

COLORS: LEGEND, BORDER – WHITE (RETROREFLECTIVE)  
 BACKGROUND – GREEN (RETROREFLECTIVE)  
 BACKGROUND (ALTERNATE) – BLUE OR BROWN (RETROREFLECTIVE)

O = PRIVATE ROAD