



PCD File No. PPR-21-050

Colorado Springs Utilities NE Gravel Staging Area

Lighting Plan

Lighting will be installed on poles in two different locations at the staging area site as well as on each corner of the scale house. All lighting at the site will be on from dusk until dawn for the safety of employees and for security of the site. Please refer to the attached Lighting Plan drawing and specification sheets for additional details.

PROJECT DATA

OWNER:
COLORADO SPRINGS UTILITIES
CLINT BARDEN, PROJECT MANAGER
PHONE: 719-668-4735
EMAIL: CBARDEN@CSU.ORG

APPLICANT:
BURNS AND MCDONNELL
DEREK HOLSCHER
PHONE: 303-474-2204
EMAIL: DHOLSCHER@BURNSMCD.COM

PLAN PREPARER:
COLORADO SPRINGS UTILITIES
CLINT BARDEN, PROJECT MANAGER
PHONE: 719-668-4735
EMAIL: CBARDEN@CSU.ORG

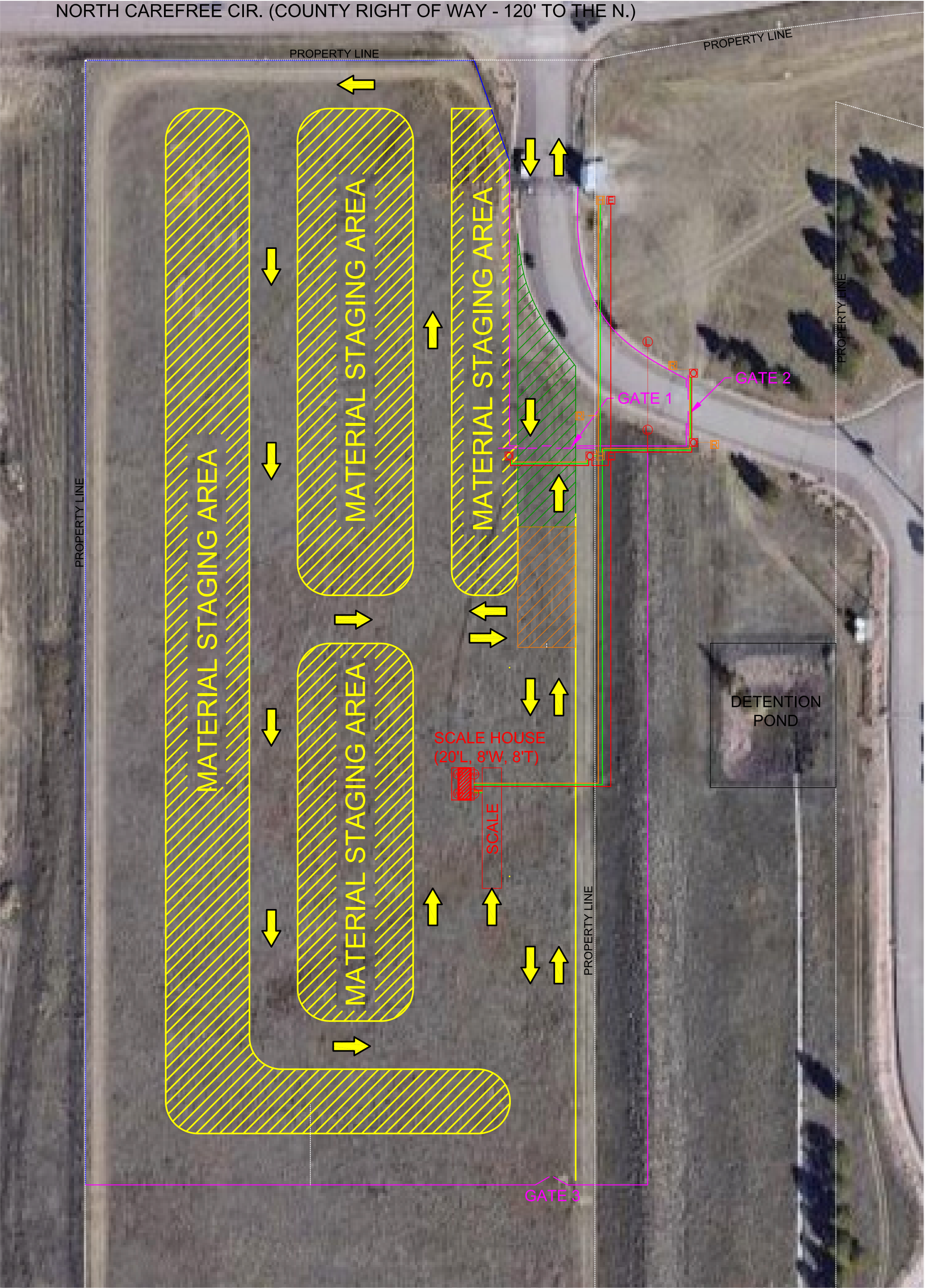
PROPERTY ADDRESS:
PARCEL 5329400005
NORTH CAREFREE CIR
COLORADO SPRINGS, CO 80922

TOTAL GROSS BUILDING SQUARE FOOTAGE:
SCALE HOUSE - 160 SQ. FT.

- NOTES:
1. ADA: THE PARTIES RESPONSIBLE FOR THIS PLAN HAVE FAMILIARIZED THEMSELVES WITH ALL CURRENT ACCESSIBILITY CRITERIA AND SPECIFICATIONS AND THE PROPOSED PLAN REFLECTS ALL SITE ELEMENTS REQUIRED BY THE APPLICABLE ADA DESIGN STANDARDS AND GUIDELINES AS PUBLISHED BY THE UNITED STATES DEPARTMENT OF JUSTICE. APPROVAL OF THIS PLAN BY EL PASO COUNTY DOES NOT ASSURE COMPLIANCE WITH THE ADA OR ANY REGULATIONS ENACTED OR PROMULGATED UNDER OR WITH RESPECT TO SUCH LAWS.
 2. THE CITY OF COLORADO SPRING (COLORADO SPRINGS UTILITIES CURRENTLY OWNS PARCELS 5329400005, 5329400015, AND 5329400014. CURRENTLY UTILITIES USES THE THREE PARCELS IN CONJUNCTION WITH EACH OTHER FOR STORM WATER RETENTION AND ACCESS. THE MATERIAL STAGING YARD STOCK PILES WILL BE LIMITED TO PARCEL 5329400005.
 3. NO EXISTING EASEMENTS EXIST ON PARCELS 532940005, 5329400014, AND 5329400015.

Previous comment unaddressed: the following have not been included.

Photometric plan depicting the lighting levels (foot candles) throughout the property, at property lines, and along any adjacent rights-of-way.



PROPOSED STAGING YARD

SCALE: 1" = 50'-0"

0' 50' 100' 150' 200'

LIGHT FIXTURE SCHEDULE									
MARK	DESCRIPTION	MANUFACTURER	CATALOG NO.	LAMPS TYPE	LAMPS WATTS	CANDLES	FINISH	MOUNTING	PHOTOCELL
L	15' STREET POLE HEAD	RAB	X34-195L (T, SF) / U	5000K LED 82	160	1,667	BRONZE	POLE	YES
WP	EXTERIOR WALL PACK	RAB	SLIM17FA15ADJ	4000K LED 70	15	151	BRONZE	EXT. WALL	YES



VICINITY MAP

SCALE: NONE

- SYMBOLS
- E ELECTRICAL PANEL
 - H HOFFMAN BOX
 - G GATE OPERATOR
 - L LIGHT POLE (15 FT. TALL, 62,235 LUMENS)
 - R CARD READER PEDESTAL
 - WP WALL PACKS (7 FT. TALL, 7,200 LUMENS)
 - DIRECTION OF TRAFFIC
- Detail page says 25 ft

- LEGEND
- NEW ASPHALT
 - TRACKING AREA
 - MATERIAL STAGING AREA
 - NEW UNDERGROUND ELECTRICAL
 - NEW UNDERGROUND LOW VOLT
 - NEW UNDERGROUND SPARE CONDUIT
 - NEW FENCE LINE (7' TALL)
 - EXISTING FENCE LINE (7' TALL)

COLORADO SPRINGS UTILITIES

2021 NE GRAVEL STAGING AREA RELOCATION

7723 NORTH CAREFREE CIRCLE
COLORADO SPRINGS, COLORADO

2	REVISION 1	11/6/2021
1	DESIGN	4/28/2021
#	Revision	Date

Designed By CB
Checked By J.B.
Reviewed By
WO #
Schedule/Tax #: 532400005
Status

E1.01

SITE LIGHTING PLAN

PCD File No. PPR-21-050

Colorado Springs Utilities NE Gravel Staging Area

Lighting Plan Checklist

Items with an X are included on the lighting plan drawing. Some items are included in the lighting cut sheets.

Owner name, contact telephone number, and email	X
Applicant name (if not owner), contact telephone number, and email	X
Plan preparer contact telephone number and email	X
Property address	X
Date, north arrow, and a graphic scale	X
Vicinity map showing the property in relation to major roadways, if not otherwise provided with the associated site plan	X
The building footprint for all structures depicted and labeled.	X
The location and height of all existing and proposed illuminating devices, including but not limited to, all parking area lights and external structural lights.	X
Detailed description of illuminating devices, fixtures, lamps, supports, reflectors, installation, and electrical details and other devices to include an elevation drawing. The description may include, but is not limited to, manufacturers specifications and catalog cuts sheets, and drawings. A key and legend may be required at the discretion of the PCD.	See Cut Sheets
Photometric data and plan, including maps and diagrams furnished by manufacturers or similar showing the angle of the cut off or light emission.	See Cut Sheets
Photometric plan depicting the lighting levels (foot candles) throughout the property, at property lines, and along any adjacent rights-of-way.	X
Location of all existing and proposed easements	X

Not provided



Color: Bronze

Weight: 218.3 lbs

Project:

Type:

Prepared By:

Date:

LDC Sec. 6.2.3.B.2: Height. No freestanding light fixtures shall be mounted higher than 15 feet, except parking lot light fixtures which shall be mounted no higher than 20 feet unless an alternative lighting proposal is approved in accordance with this Code. Please revise.

Technical Specifications

Listings

CSA Listed:

Suitable for wet locations

Construction

Description:

Steel pole 4" round 7 gauge 25 foot welded tenon square base

Shaft:

46,000 p.s.i. minimum yield.

Hand Holes:

Reinforced with grounding lug and removable cover

Base Plates:

36,000 p.s.i. minimum yield.

Color:

Bronze powder coating

Height:

25 FT

Gauge:

7

Wall Thickness:

3/16"

Shaft Size:

4"

Anchor Bolt Templates:

WARNING Template must be printed on 11" x 17" sheet for actual size. CHECK SCALE BEFORE USING. Templates shipped with anchor bolts and available [online](#).

Max EPA's/Max Weights:

70MPH 9.5 ft./380 lb.
80MPH 6.3 ft./230 lb.
90MPH 4.1 ft./150 lb.
100MPH 2.6 ft./120 lb.
110MPH 1.4 ft./70 lb.
120MPH 0.5 ft./60 lb

Accessories:

Base/Cap: [BASE-R4](#)
Anchor Bolts: [BOLT4/7](#)

Other

Terms of Sale:

Pole Terms of Sale is available [online](#).

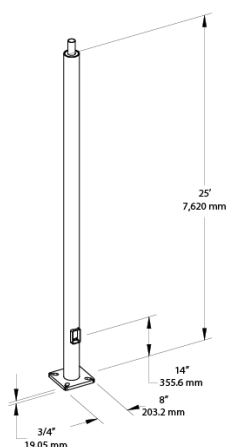
Technical Specifications (continued)

Other

Buy American Act Compliance:

RAB values USA manufacturing! Upon request, RAB may be able to manufacture this product to be compliant with the Buy American Act (BAA). Please contact customer service to request a quote for the product to be made BAA compliant.

Dimensions



Features

- Designed for ground mounting
- Heavy duty TGIC polyester coating
- Reinforced hand holes with grounding lug and removable cover for easy wiring access
- Pole caps, base covers & bolts are sold separately
- Custom manufactured for each application

LDC Sec. 6.2.3.B.2: Height. No freestanding light fixtures shall be mounted higher than 15 feet, except parking lot light fixtures which shall be mounted no higher than 20 feet unless an alternative lighting proposal is approved in accordance with this Code. Please revise.

Ordering Matrix

Family	Shape	Size	Gauge	Height	Drilled/Welded Tenon
P	R	4	7	25	WT
	R = Round	4 = 4"	7 = 7	10 = 10'	D2 = Drilled
	TR = Taped Round	5 = 5"	11 = 11	15 = 15'	WT = Welded Tenon
		6 = 6"		20 = 20'	
		7 = 7"		25 = 25'	
		8 = 8"		30 = 30'	



General purpose lighting that's pocket friendly.

Color: Bronze

Weight: 10.8 lbs

Project:

Type:

Prepared By:

Date:

Driver Info

Type	Constant Current
120V	1.26A
208V	0.77A
240V	0.67A
277V	0.56A
Input Watts	148.4W

LED Info

Watts	160W
Color Temp	5000K (Cool)
Color Accuracy	82 CRI
L70 Lifespan	50,000 Hours
Lumens	20,945
Efficacy	141.1 lm/W

Technical Specifications

Compliance

UL Listed:

Suitable for wet locations. Suitable for ground mounting.

IESNA LM-79 & LM-80 Testing:

RAB LED luminaires and LED components have been tested by an independent laboratory in accordance with IESNA LM-79 and LM-80.

DLC Listed:

This product is listed by Design Lights Consortium (DLC) as an ultra-efficient premium product that qualifies for the highest tier of rebates from DLC Member Utilities. Designed to meet DLC 5.1 requirements.

DLC Product Code: PWDK3YFS

Electrical

Driver:

Constant Current, 120-277V, 50/60 Hz, 1.26A, 208V: 0.77A, 240V: 0.67A, 277V

Dimming Driver:

Driver includes wiring for 0-10V dimming systems. Dim as low as 10%.

THD:

4.67% at 120V, 5.43% at 277V

Power Factor:

99.8% at 120V, 96.6% at 277V

Note:

All values are typical (tolerance +/- 10%)

Optical

NEMA Type:

NEMA Beam Spread of 7H x 7V

LED Characteristics

LEDs:

Long-life, high-efficacy, surface-mount LEDs

Color Uniformity:

RAB's range of Correlated Color Temperature follows the guidelines of the American National Standard for Specifications for the Chromaticity of Solid State Lighting (SSL) Products, ANSI C78.377-2017.

Construction

IP Rating:

Ingress protection rating of IP65 for dust and water

EPA:

1.2

Cold Weather Starting:

Minimum starting temperature is -40°C (-40°F)

This lamp has no cutoff. Please review the following LDC Sec. 6.2.3.B.1.a:

Concealed or Shielded. Light fixtures shall be arranged and positioned such that the light sources are concealed and fully shielded so that no direct light or reflection creates a nuisance or hazard to any adjacent ownership or right-of-way and that up-light, spill-light, glare, and unnecessary diffusion are minimized. Light fixtures, except as otherwise permitted herein, are required to be full cutoff as defined by the Illuminating Engineers Society of North America (IESNA) The cut-off angle of an exterior light source shall not exceed 90 degrees. Full cut-off fixtures may not be tilted or aimed in a manner that results in light distribution above the horizontal plane. The use of semi-cutoff or cutoff (as opposed to full cutoff) fixtures shall be permitted to illuminate areas other than parking lots provided the pole or mounting point is no more than 10' in height and the maximum lumen output does not exceed 1800 lumens per lamp.

Technical Specifications (continued)

Construction

Maximum Ambient Temperature:

Suitable for use in up to 40°C (104°F)

Housing:

Precision die-cast aluminum

Mounting:

Slipfitter with tilt angle in 10° increments

Lens:

Tempered glass

Finish:

Formulated for high durability and long-lasting color

Green Technology:

Mercury and UV free. RoHS-compliant components.

Tilt Increment:

Rotates in 6 degree increments

Performance

Lifespan:

50,000-Hour LED lifespan based on IES LM-80 results and TM-21 calculations

Other

5 Yr Limited Warranty:

The RAB 5-year, limited warranty covers light output, driver performance and paint finish. RAB's warranty is subject to all terms and conditions found at rablighting.com/warranty.

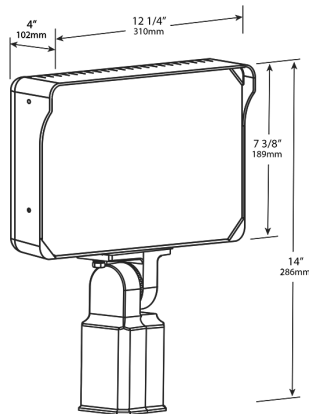
Trade Agreements Act Compliant:

This product is a product of Cambodia and a "designated country" end product that complies with the Trade Agreements Act

Buy American Act Compliance:

RAB values USA manufacturing! Upon request, RAB may be able to manufacture this product to be compliant with the Buy American Act (BAA). Please contact customer service to request a quote for the product to be made BAA compliant.

Dimensions



Features

Versatile, general-purpose floodlight

7H x 7V NEMA distribution

0-10V dimming

IP65 rating protects against dust and water

50,000-Hour LED lifespan

Ordering Matrix

Family	Lumen Packages (values are nominal)	Mounting	CRI/Color Temp	Finish	Driver/Voltage
X34	-	195L	SF		/U
	100L = 11,000 Lumens, 87W 150L = 18,000 Lumens, 130W 195L = 20,000 Lumens, 160W	SF = Slipfitter T = Trunnion	Blank = 80 CRI, 5000K -840 = 80 CRI, 4000K -830 = 80 CRI, 3000K	Blank = Bronze W = White	/U = 120-277V, 0-10V Dimming



2021-Nov-16

Page 1/1

x34-195l-t-sf-udlf2104112-3a-c.ies

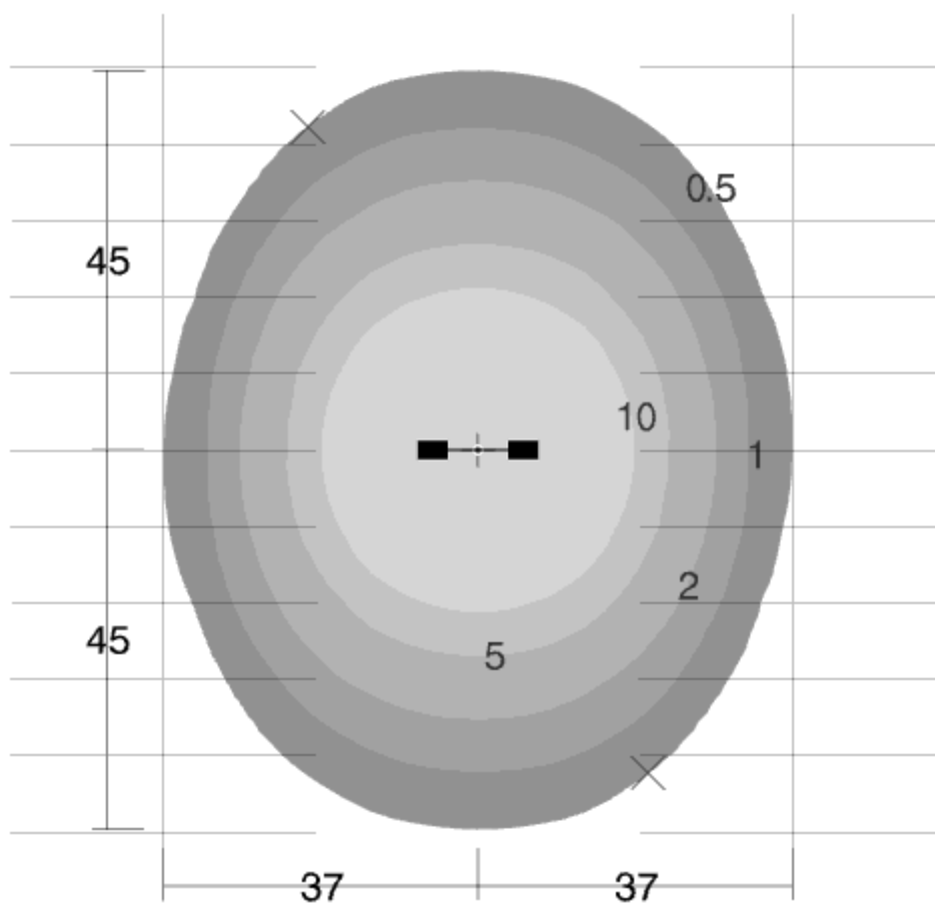
RAB LIGHTING INC.
X34-195L [T,SF] /U

Back-to-Back



Luminaire Watts	148	W
Ballast/Driver Factor	1.00	
Light Loss Factor	1.00	
Total Proration Factor	1.00	
Luminaire Lumens	20920	lms

15 ft



Min: 0.50 fc X
Max/Avg: 8.7

Avg: 7.7 fc
Avg/Min: 15

Max: 67 fc +
! Max/Min: 133



Color: Bronze

Weight: 3.0 lbs

Project:**Type:****Prepared By:****Date:****Driver Info**

Type	Constant Current
120V	0.13A
208V	0.07A
240V	0.06A
277V	0.05A
Input Watts	14.2/14/14.2W

LED Info

Watts	15W
Color Temp	3000K/4000K/5000K
Color Accuracy	70 CRI
L70 Lifespan	100,000 Hours
Lumens	1761/1904/1852
Efficacy	124/136.2/130.3 lm/W

Technical Specifications**Field Adjustability****Field Adjustable:**

Color temperature selectable by 3000K, 4000K and 5000K

Compliance**UL Listed:**

Suitable for wet locations

IESNA LM-79 & IESNA LM-80 Testing:

RAB LED luminaires and LED components have been tested by an independent laboratory in accordance with IESNA LM-79 and LM-80.

DLC Listed:

This product is listed by Design Lights Consortium (DLC) as an ultra-efficient premium product that qualifies for the highest tier of rebates from DLC Member Utilities. Designed to meet DLC 5.1 requirements.
DLC Product Code: PL0MVJOV62Q3

Performance**Lifespan:**

100,000-Hour LED lifespan based on IES LM-80 results and TM-21 calculations

LED Characteristics**LEDs:**

Long-life, high-efficiency, surface-mount LEDs

Electrical**Driver:**

Constant Current, Class 2, 120-277V, 50/60 Hz, 120V: 0.13A, 208V: 0.07A, 240V: 0.06A, 277V: 0.05A

Dimming Driver:

Driver includes dimming control wiring for 0-10V dimming systems. Requires separate 0-10V DC dimming circuit. Dims down to 10%.

Photocell:

120-277V Integrated button photocell included.

Note:

All values are typical (tolerance +/- 10%)

Construction**IP Rating:**

Ingress protection rating of IP65 for dust and water

Cold Weather Starting:

Minimum starting temperature is -40°C (-40°F)

Maximum Ambient Temperature:

Suitable for use in up to 50°C (122°F)

Housing:

Precision die-cast aluminum housing and door frame

Technical Specifications (continued)

Construction

Lens:

Polycarbonate lens

Mounting:

Hinged wiring access and conduit entries on the back, sides, top and bottom make installation a snap

Cut Off:

Adjustable from 0° (full cutoff) to 90°. 7 settings at 15° each.

Finish:

Formulated for high durability and long-lasting color

Green Technology:

Mercury and UV free. RoHS-compliant components.

Other

5 Yr Limited Warranty:

The RAB 5-year, limited warranty covers light output, driver performance and paint finish. RAB's warranty is subject to all terms and conditions found at rablighting.com/warranty.

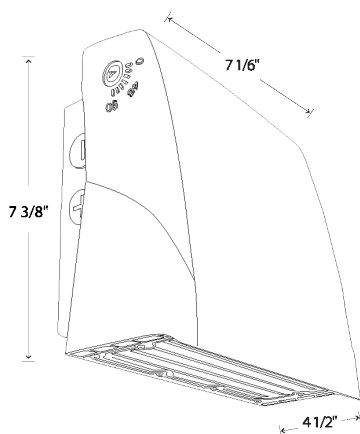
Equivalency:

Equivalent to 70W Metal Halide

Buy American Act Compliance:

RAB values USA manufacturing! Upon request, RAB may be able to manufacture this product to be compliant with the Buy American Act (BAA). Please contact customer service to request a quote for the product to be made BAA compliant.

Dimensions



Features

- Selectable CCT
- Adjustable cutoff
- Integrated photocell
- 0-10V dimming standard

Ordering Matrix

Family	Wattage	Style
SLIM17FA	15	ADJ
15 = 15W ADJ = Angle Adjustable 30 = 30W		

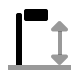
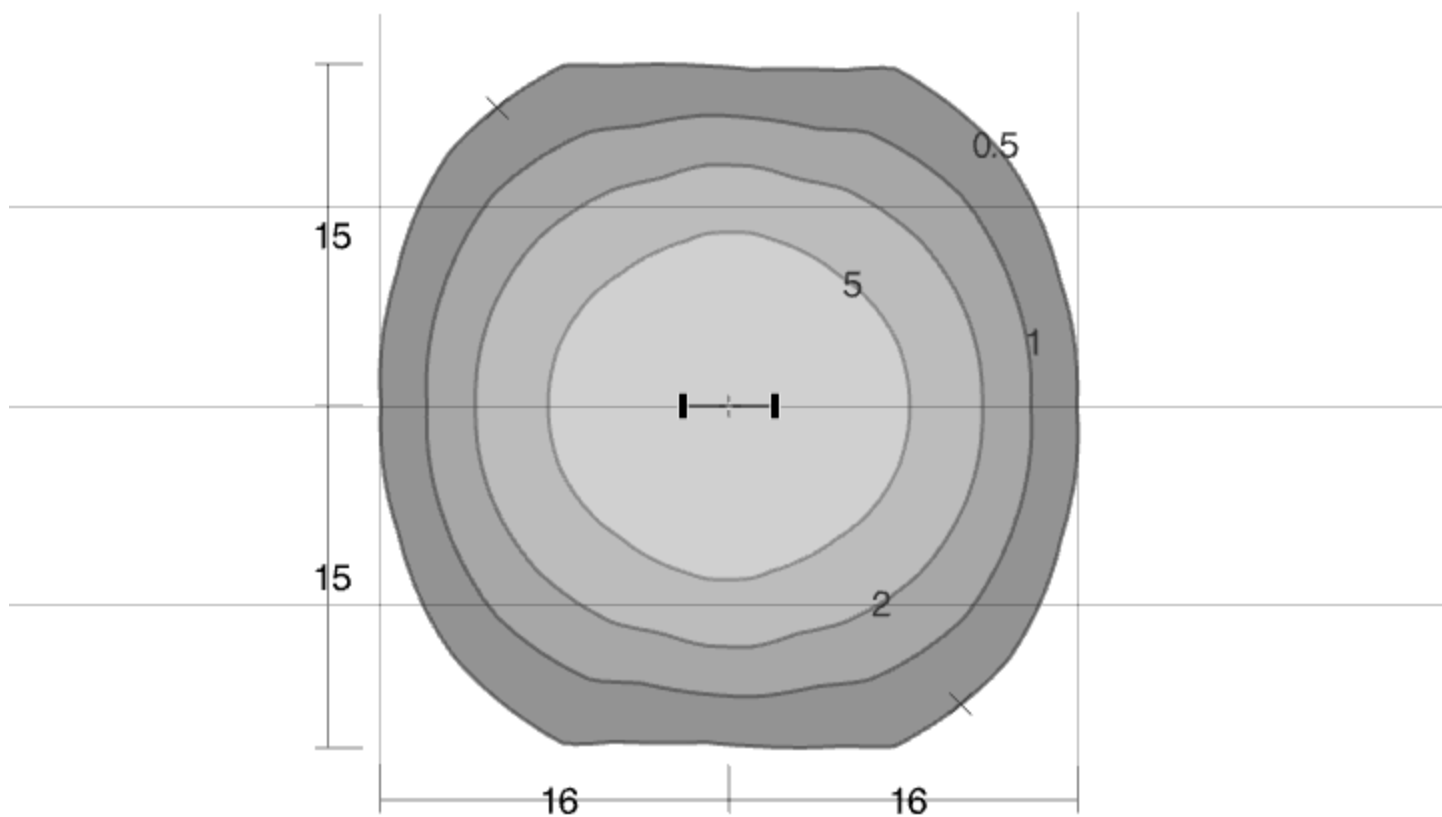


slim17fa15adj_5k.ies

RAB Lighting Inc.
SLIM17FA15ADJ_5K
Back-to-Back



Luminaire Watts	14	W
Ballast/Driver Factor	1.00	
Light Loss Factor	1.00	
Total Proration Factor	1.00	
Luminaire Lumens	1761	lms

 8.0 ft

Min: 0.50 fc ✕
Max/Avg: 5.9

Avg: 3.8 fc
Avg/Min: 7.6

Max: 22 fc +
! Max/Min: 44