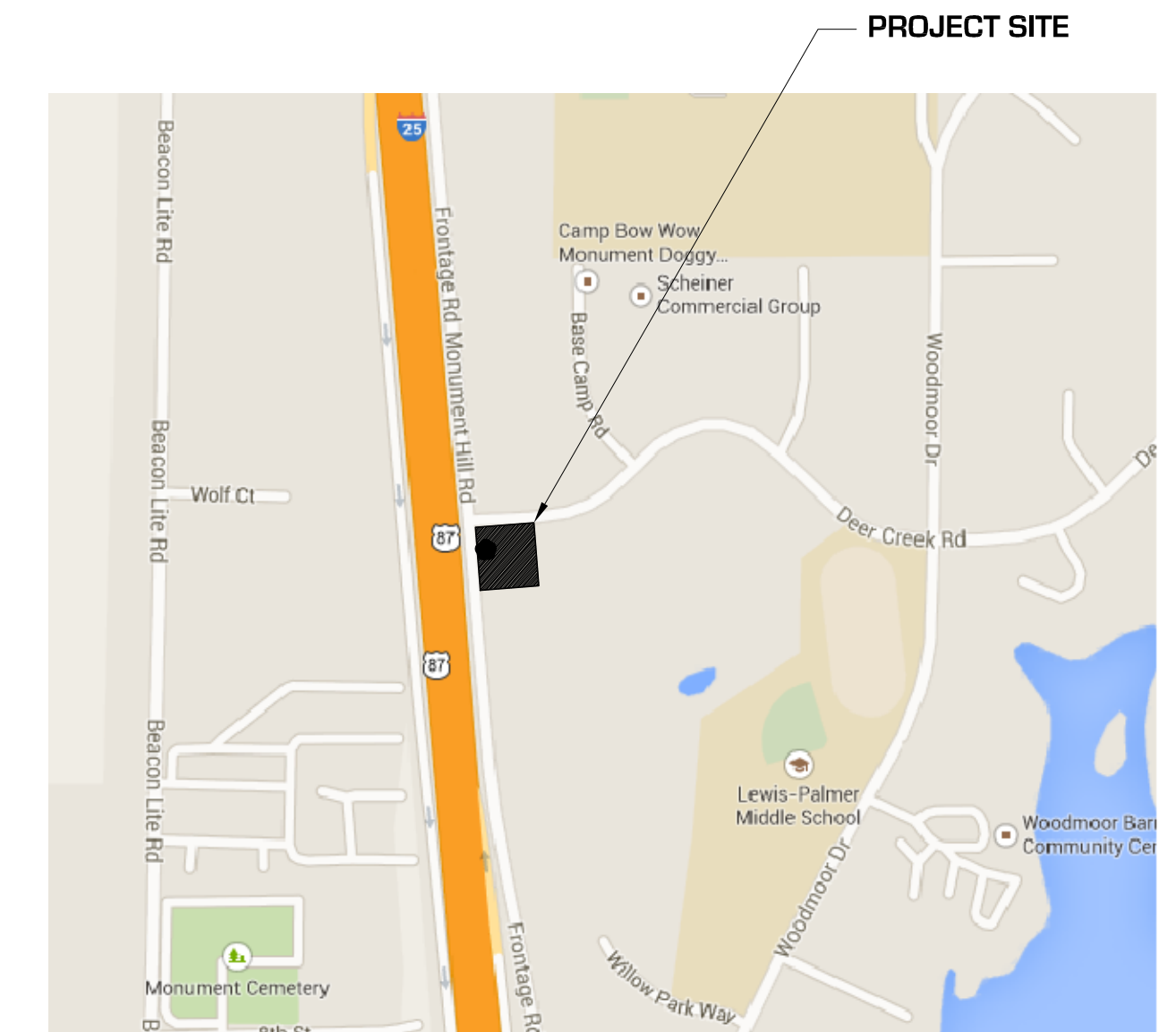
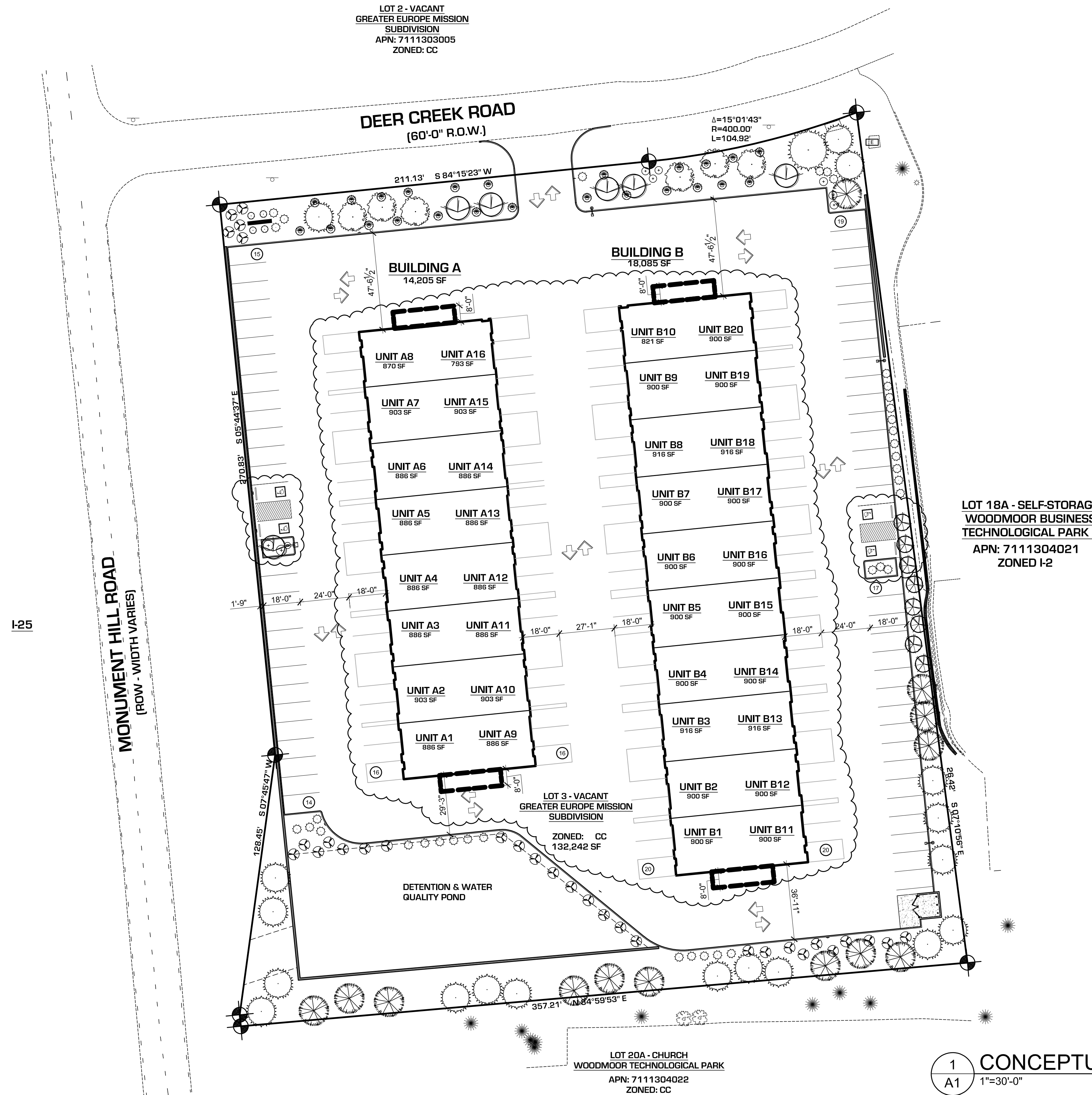


SITE DEVELOPMENT PLAN AMENDMENT MONUMENT HILL BUSINESS PARK

LOT 3, GREATER EUROPE MISSION SUB FILING NO 1
LOCATED IN THE SW 1/4 SECTION 11, T. 11S., R 67 W., 6TH P.M.
EL PASO COUNTY, COLORADO
APN: 7111304020



VICINITY MAP



BLDG. FOOTPRINT:	32,500 SF (24.2%)
PARKING & DRIVEWAY:	66,024 SF (49.2%)
LANDSCAPING:	35,773 SF (26.6%)
TOTAL LOT AREA:	134,297 SF (3.083 ACRES)

PARKING REQUIRED (1:200)	
(OFFICE USE = APPROX. 30% GFA):	50 SPACES
PARKING REQUIRED (1:1000)	
(WAREHOUSE USE = APPROX. 70% GFA):	23 SPACES
TOTAL PARKING REQUIRED:	73 SPACES
TOTAL PARKING PROVIDED:	137 SPACES
ACCESSIBLE SPACES REQUIRED:	3 SPACES
ACCESSIBLE SPACES PROVIDED:	4 SPACES

1
A1
CONCEPTUAL SITE PLAN
1"=30'-0"
0 25 50 100



DATE OF ISSUE: 08.06.18
SCALE: 1"=30'-0"
DRAWN BY: SWG
CHECKED BY: JTK

H O V E R
ARCHITECTURE
8089 S. LINCOLN STREET
SUITE 201
LITTLETON, CO 80122
(720) 773-2801

SHEET

A1

ARCHITECTURAL
SITE PLAN