

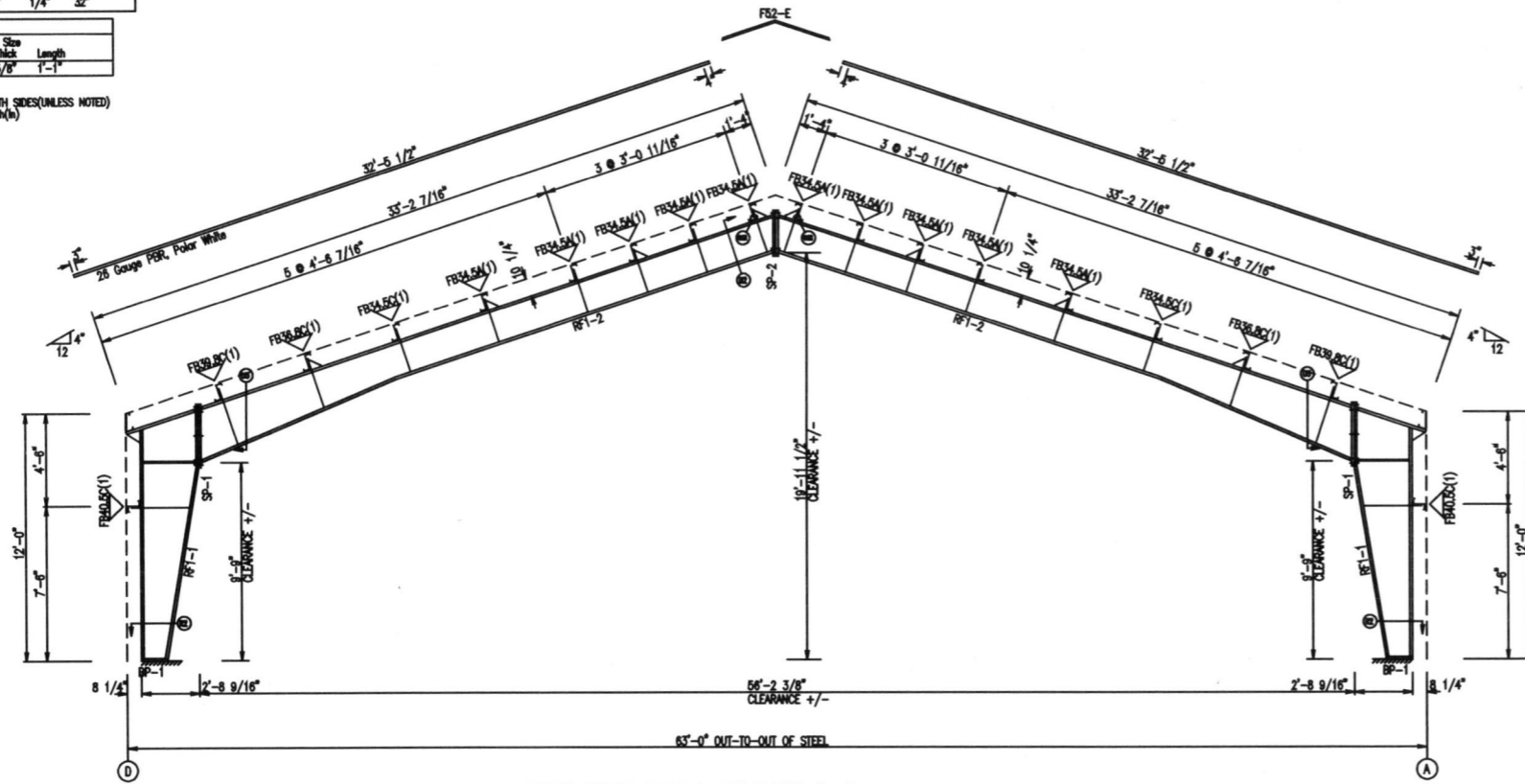
SPLICE PLATE & BOLT TABLE										
Mark	Qty	Top	Bot	Int	Type	Dia	Length	Width	Thick	Length
SP-1	4	4	2		A325	1"	2 3/4"	6"	3/4"	3'-2 3/4"
SP-2	4	4	0		A325	3/4"	3 3/4"	6"	3/8"	2'-1 7/8"

STIFFENER TABLE				
Mark	Stiff	Mark	Plate Size	Length
RF1-1	St-1	4"	1/4"	32"

BASE PLATE TABLE				
Col	Mark	Width	Thick	Length
	BP-1	8"	5/8"	1'-1"

MEMBER TABLE					
Mark	Leg Depth	Web Thick	Web Plate	Outside Flange	Inside Flange
RF1-1	12.0/32.0	0.250	145.7	6 x 1/4 x 130.0	6 x 5/16 x 113.5
RF1-2	20.0/18.0	0.250	123.1	6 x 5/16 x 42.8	6 x 1/4 x 113.7
	18.0/18.0	0.186	120.0	6 x 5/16 x 240.0	6 x 3/8 x 123.6
	18.0/18.0	0.156	120.0		6 x 1/4 x 233.0

FLANGE BRACES: BOTH SIDES (UNLESS NOTED)
 FB30(B)(1)
 C - L2X2X1/8
 A - L2X2X1/4



FRAME CROSS SECTION: FRAME LINE 2 3

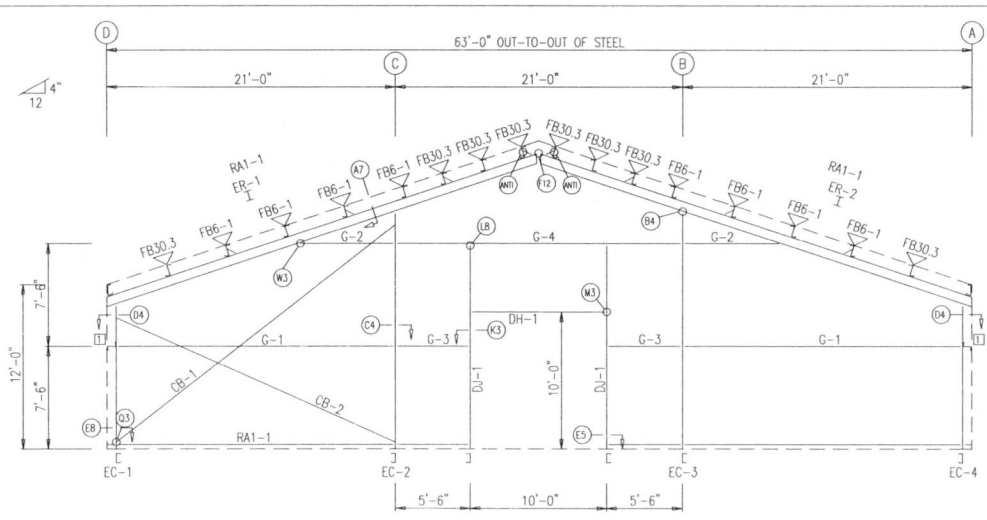
GENERAL NOTES:
 1. SNUG TIGHT - ALL BOLTED JOINTS WITH A325 TYPE 1 BOLTS ARE SPECIFIED AS SNUG-TIGHTENED JOINTS IN ACCORDANCE WITH THE SPECIFICATION FOR STRUCTURAL JOINTS USING A325 OR A490 BOLTS, DECEMBER 31, 2008. PRE-TENSIONING METHODS, INCLUDING TURN-OF-NUT, CALIBRATED WRENCH, TIGHT-OFF-TYPE TENSION-CONTROL BOLTS OR DIRECT TENSION INDICATOR ARE NOT REQUIRED. INSTALLATION INSPECTION REQUIREMENTS FOR SNUG TIGHT BOLTS (SPECIFICATION FOR STRUCTURAL JOINTS SECTION 8.1) IS SUGGESTED.
 2. ALL FIELD WELDED CONNECTIONS OF SECONDARY FRAMING SHALL BE BOLTED WITH A325 MACHINE BOLTS.
 3. INSTALL ALL FLANGE BRACES ON COLUMN AND RAFTER AS SHOWN

ISSUE	DATE	DESCRIPTION	BY	CHK'D	DSN
A	8/29/18	FOR CONSTRUCTION PERMIT	PNR	MKS	

SOUTHWEST STEEL
 2000 EAST LAMAR BLVD #600
 ARLINGTON, TX 76006

PROJECT: SUSANNE HOFF
 CUSTOMER: SUSANNE HOFFMAN
 LOCATION: COLORADO SPRINGS, CO 80908
 OWNER: SUSANNE HOFFMAN

CAD	DATE	SCALE	PHASE	BUILDING ID	JOB NUMBER	SHEET NUMBER	ISSUE
	8/29/18	N.T.S.	1	A	16-B-67856	E7	A



BEARING FRAME ONLY!
 WASHER TO BE USED AT ENDWALL COLUMN TO ENDWALL RAFTER CONNECTION. USE ONE WASHER ON COLUMN SIDE. WASHER NOT NEEDED ON CLIP SIDE.

BOLT TABLE

FRAME LINE	LOCATION	QUAN	TYPE	DIA	LENGTH
1	ER-1/ER-2	8	A325	5/8"	1 3/4"
	Columns/Raft	4	A325	1/2"	1 1/4"

MEMBER TABLE

MARK	PART	LENGTH
EC-1	12F35C14	10'-4 3/16"
EC-2	12F35C12	17'-1 9/16"
EC-3	12F35C12	17'-1 9/16"
EC-4	12F25C14	10'-4 3/16"
ER-1	W10X17	33'-2 3/16"
ER-2	W10X17	33'-2 3/16"
DJ-1	8F35C14	15'-0"
DH-1	8F25C16	10'-0"
G-1	8X35Z13	19'-8"
G-2	8X25Z16	6'-3 5/8"
G-3	8X25Z16	5'-2"
G-4	8X35Z12	20'-11 1/2"
CB-1	1/2" DIA. ROD	26'-5"
CB-2	1/2" DIA. ROD	22'-11"

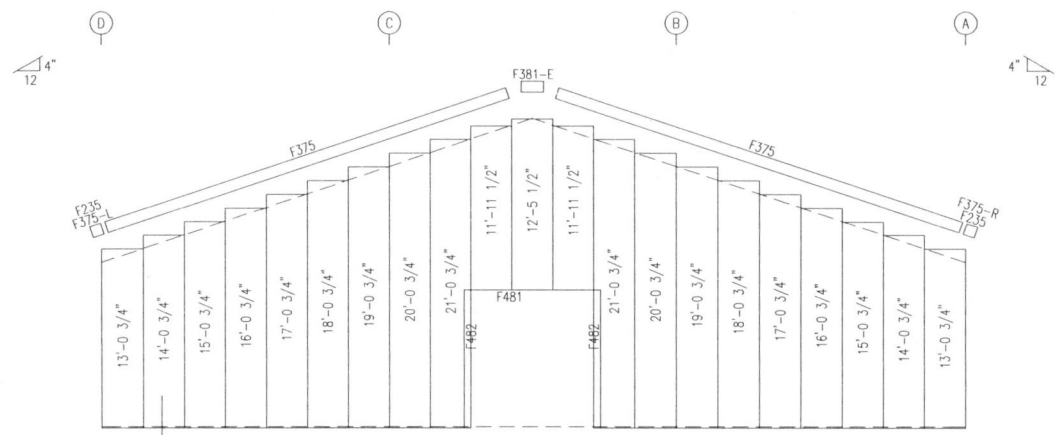
FLANGE BRACE TABLE

FRAME LINE	MARK	PART	LENGTH
1	FB30.3	L2X2X1/4	2'-6 1/4"
	FB6-1	L2X2X1/8	2'-6 1/4"

CONNECTION PLATES

FRAME LINE	ID	MARK/PART
1	1	SC-5

ENDWALL FRAMING: FRAME LINE 1



ENDWALL SHEETING & TRIM: FRAME LINE 1

PANELS: 26 Gauge PBR - Saddle Tan

ISSUE	DATE	DESCRIPTION	BY	CK'D	DSN
A	8/31/18	FOR CONSTRUCTION PERMIT	MNK	AVS	AKS

SOUTHWEST STEEL

2000 EAST LAMAR BLVD #600
 ARLINGTON, TX 76006

PROJECT:	SUSANNE HOFF						
CUSTOMER:	SUSANNE HOFFMAN						
OWNER:	SUSANNE HOFFMAN						
LOCATION:	COLORADO SPRINGS, CO 80908						
CAD	DATE	SCALE	PHASE	BUILDING ID	JOB NUMBER	SHEET NUMBER	ISSUE
	8/31/18	N.T.S.	1	A	16-B-67856	E5	A

NOTE:
 FIELD SLOT GIRTS FOR BRACING
 SEE DETAIL ZZ IN DET5



GENERAL NOTES:

1. INSTALL ALL GIRTS AND FLANGE BRACES (FB) AS SHOWN.
2. WALL PANEL PROVIDES STRUCTURAL STABILITY TO THE BUILDING.
3. OTHER THAN FOR WALK DOORS AND WINDOWS SHOWN ON THE CONTRACT, DO NOT ADD ADDITIONAL WALL OPENINGS WITHOUT APPROVAL OF BUILDING MANUFACTURER OR PROFESSIONAL ENGINEER.
4. AFTER INSTALLATION, WIPE ALL PANELS CLEAN OF METAL SHAWINGS CAUSED BY DRILLING.