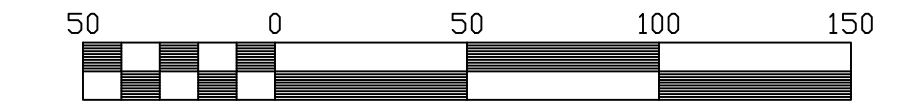
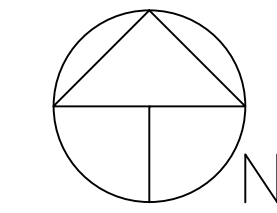


DRIVEWAY EXHIBIT

PONDEROSA PINE ESTATES

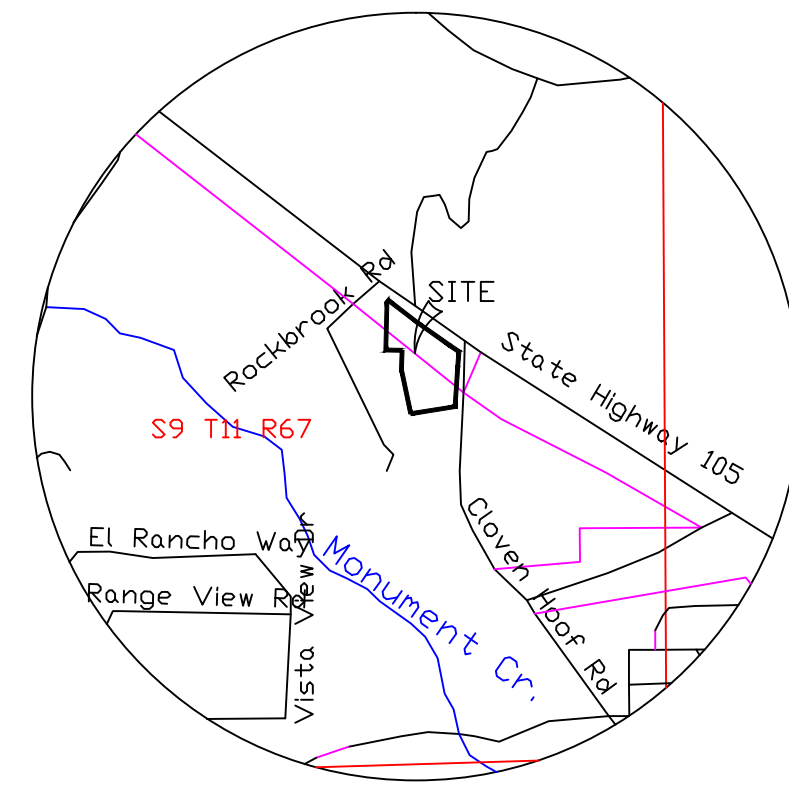
A SUBDIVISION OF LOTS 1 AND 2, MORGAN SUBDIVISION NO. 1
SECTION 9, T.11S., R.67W. OF THE 6TH P.M.
EL PASO COUNTY, COLORADO



Scale 1" = 50'
Contour Interval: 2'

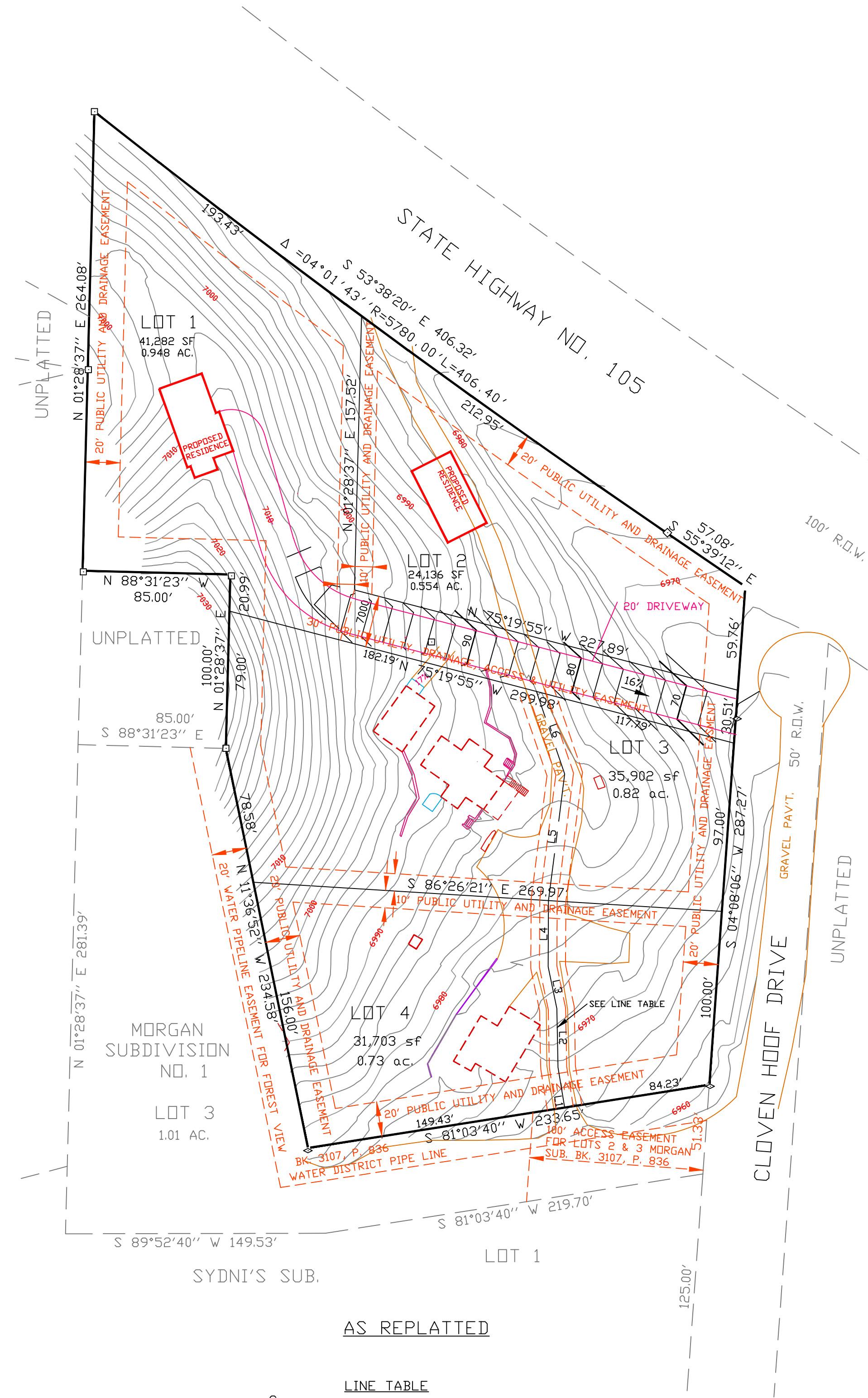
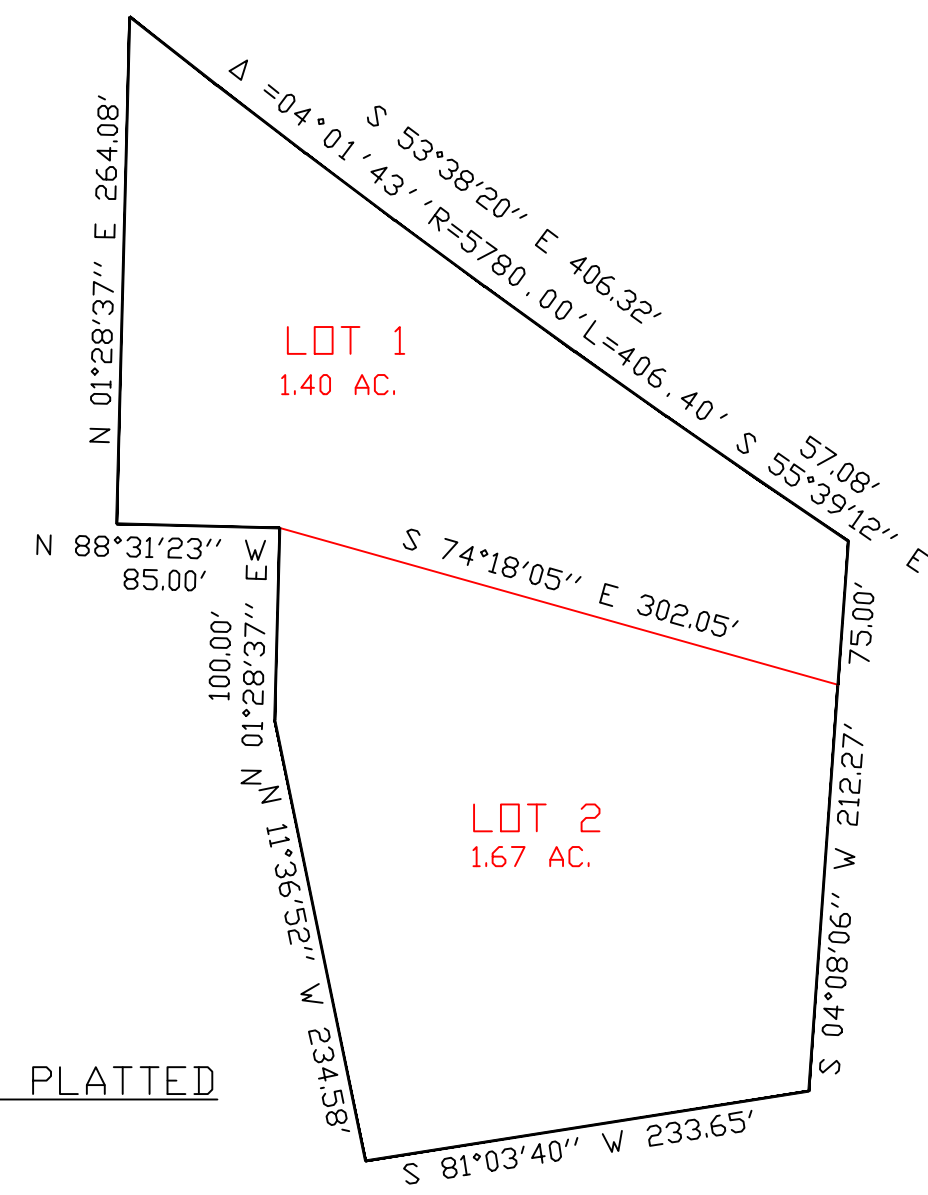
LEGEND:

- SET YELLOW #9853 CAP DN #4 REBAR
- FOUND 1/2" IRON PIN
- ◇ FOUND #4 REBAR
- ◇ FOUND 3-1/4" AL. CAP CDDT R.D.W. MARKER



VICINITY MAP
1"=1000'

AS CURRENTLY PLATTED
1"=100'



AS REPLATTED

- LINE TABLE**
- ⊖ 10' PRIVATE UTILITY EASEMENT
 - ⊖ 20' PRIVATE ACCESS EASEMENT
 - ⊖ PRIVATE ACCESS & UTILITY EASEMENT

NUMBER	DIRECTION	DISTANCE
L1	N 09°14'25" W	23.41'
L2	N 01°07'53" W	33.81'
L3	N 11°48'43" W	24.61'
L4	N 00°17'57" E	38.03'
L5	N 07°17'54" E	73.38'
L6	N 18°53'52" W	50.20'

PREPARED BY THE OFFICE OF:
OLIVER E. WATTS PE-LS
CONSULTING ENGINEER
614 ELKTON DRIVE
COLORADO SPRINGS, CO 80907
(719) 593-0173
oliewatts@aol.com
Celebrating over 45 years in business