

PRAIRIE RIDGE FIRE PROTECTION REPORT

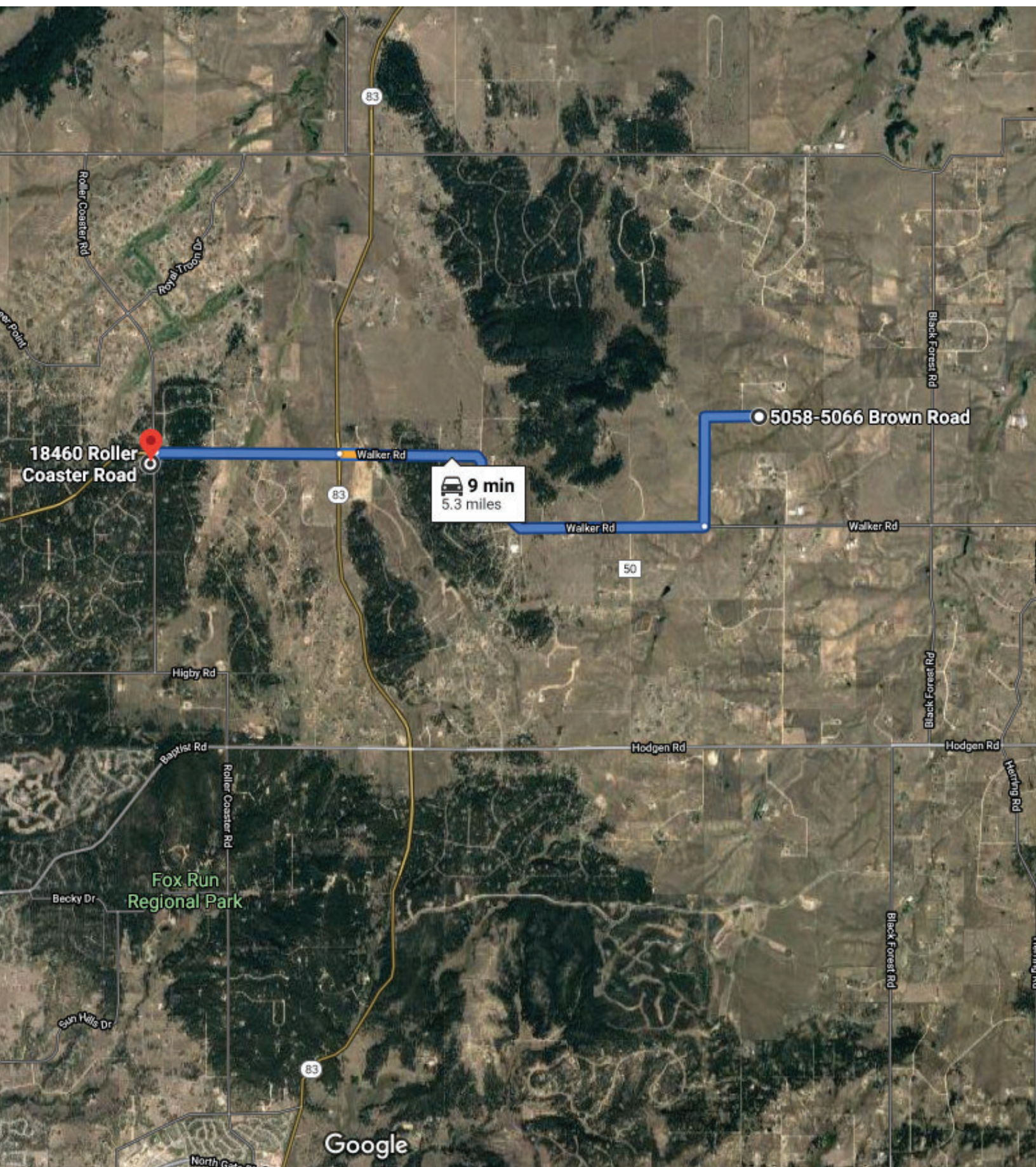
December 14, 2020

Prairie Ridge is located in the Tri-Lakes Monument Fire Protection District (TLMFPD) service area. The District also participates in mutual aid response with surrounding fire districts and fire departments. TLMFPD has issued a Commitment Letter to Provide Fire and Emergency Services dated August 13, 2020.

TLMFPD has three full service/full time manned fire stations. The closest station to Prairie Ridge is Station 2, located at 18460 Roller Coaster Road, which is 4.7 miles away from the site by the established public roads. The department states that response times are difficult to predict due to inclement weather. In favorable conditions, response time to the site is estimated to be 9 minutes. The department has two fire engines carrying 1000 gallons of water each, one ladder truck with 300 gallons of water, one water tender truck with 2400 gallons of water, three ambulances, three brush trucks, four command vehicles, one Snowcat and one ATV..

TLMFPD carries Class 3 ISO rating for all properties located within 1000 feet of a fire hydrant. The District uses an ISO rating of 3Y for all other properties. There are no fire hydrants in the vicinity of Prairie Ridge.

The site is located in an area characterized as grassed range land. The site is not forested or adjacent to a forested area. The construction of all new residences at Prairie Ridge will comply with the requirements of the Tri-Lakes Monument Fire Protection District which includes the review and approval of site plans and architectural plans by the fire district prior to issuance of a building permit.





TRI-LAKES MONUMENT FIRE PROTECTION DISTRICT

Serving the Tri-Lakes area of Monument, CO

Call Now: 719-484-0911

Contact Us

[Home](#)

[About](#)

[Gen Info](#)

[Development](#)

[Employment](#)

[FAQs](#)

[COVID19](#)

About

From the Fire Chief

On behalf of the Tri-Lakes Monument Fire Protection District (TLMFPD) staff, let me welcome you to the District's website.

The Tri-Lakes Monument Fire Protection District serves approximately 30,000 residents within boundaries that are roughly Baptist Rd on the south, the Pike National Forest on the west, County Line Rd on the north and Black Forest Rd on the east. The TLMFPD is a mostly career department which means that we have full-time firefighters and paramedics in our three fire stations 24 hours a day, 7 days a week.

Unlike the majority of El Paso County, we also provide ambulance transport service meaning that should you dial 9-1-1 for an ambulance, it will most likely be a TLMFPD ambulance that will pull up at your door and not a private ambulance.

The fire stations are located on Highway 105 just west of the Burlington Northern railroad tracks, on Woodmoor Dr just north of Highway 105 and on the southwest corner of Highway 105 and Roller Coaster Road. The administrative offices for the district are located at 16055 Old Forest Point, Suite 103, in Monument. The TLMFPD also has extensive mutual aid with surrounding districts guaranteeing a quick emergency response even if TLMFPD units are unavailable. See our website at www.tlmfire.org.

The TLMFPD is committed to our community and offers a variety of services to its residents including structural fire protection plan reviews, property mitigation inspections, smoke detector replacement, block party visits, car seat checks, free blood pressure checks, senior safety assessments, CPR classes, and others.

One item that I would like to focus on briefly is property mitigation inspections. Wildland fires and their impact on the wildland/urban interface, of which the Monument/Woodmoor area is in, are a major concern throughout Colorado. We ask each homeowner to do their part in properly protecting their home (mitigation) from the threat of wildfire and making the entire community safer. We offer complimentary property mitigation assessments. For more information on mitigation action please visit the website, www.firewise.org (link is external) as we are a FireWise community.

Feel free to contact our administrative office with any questions at our nonemergency phone number (719) 484-0911.

Hopefully, you never have to request our services, but should you need them, we are ready to serve any way we can.

Chris Truty, Fire Chief
Tri-Lakes Monument Fire Protection District

PHYSICAL
16055 Old Forest Point, Suite 103
Monument, CO 80132
719-484-0911
719-481-3456 (Fax)
Mon-Fri 8:00a-4:30p



© 2017 (G) All Rights Reserved.



TRI-LAKES MONUMENT FIRE PROTECTION DISTRICT

Serving the Tri-Lakes area of Monument, CO

Call Now: 719-484-0911

Contact Us

[Home](#)

[About](#)

[Gen Info](#)

[Development](#)

[Employment](#)

[FAQs](#)

[COVID19](#)

About

STATIONS

The District provides services from 3 fire stations:

Station 1 - [18650 Hwy 105, Monument CO, 80132](#)



Station 2 - [18460 Roller Coaster Rd, Monument CO, 80132](#)



Station 3 - [1855 Woodmoor Dr, Monument CO 80132](#)



District Administration is located at 16055 Old Forest Point, Suite 103, Monument, CO 80132

FLEET

The District operates 3 engines, 1 tower ladder, 3 ambulances, 3 brush trucks, 4 command vehicles, 1 Snowcat and 1 ATV



PHYSICAL
16055 Old Forest Point, Suite 103
Monument, CO 80132
719-484-0911
719-481-3456 (Fax)
Mon-Fri 8:00a-4:30p



© 2017 (G) All Rights Reserved.

Operations



TRI-LAKES MONUMENT FIRE PROTECTION DISTRICT

Serving the Tri-Lakes area of Monument, CO

Call Now: 719-484-0911

Contact Us

[Home](#)

[About](#)

[Gen Info](#)

[Development](#)

[Employment](#)

[FAQs](#)

[COVID19](#)

Development

ISO Ratings

2014 Insurance Services Office Rating

For more information see www.iso.com (appendix H)

What is ISO?

ISO is a service that provides rating and other services to property and casualty insurance industries. The goal is to recognize the impact that public fire protection has on individual homeowner property fire rates given that fire protection can affect the percentage of loss value that could be expected in the event of a fire. There are 10 categories 10 meaning lowest level of fire protection to a Class 1 (Class 1 = lowest annual property insurance).

The Tri-Lakes Monument Fire Protection District uses two ratings for our fire district as of September 30, 2014, provided you are within 5 road miles of a fire station and reside within the fire district (a Tri-Lakes Monument Fire Protection District levy is on your annual property tax bill). ISO's main criteria is mainly performance oriented meaning ratings are largely based on quantity of water a fire department crew can flow water and the duration of the water flow. Developments with cistern access can qualify as a Class 3 rating providing there is 30,000 gallons of water in the cistern.

Steps to determine your ISO rating

1. Verify with El Paso County Assessors website which fire protection district you are in.
2. Google the distance from your property to the nearest fire hydrant.
3. Google distance from your property to the nearest fire station.

Rating (See ISO Protection Class Brochure)

- Class 3 for all properties located within 1000' of a fire hydrant
- Class 3Y for all other properties

If you are beyond 5 road miles from a fire station than you have the following ratings:

- Class 10W for all properties located within 1000' from a water source
- Class 10 for all properties located farther than 1000' from a water source

Vehicle Information

Each engine and ladder truck carry three fire extinguishers (dry chemical, CO2 and water) as well as 20 gallons of foam plus 10 additional,

- Engine carries 1000 gallons of water (We have two)
 - ladder truck carries 300 gallons of water
- Total water brought from TLM units only is 2300 gallons

Mutual aid

We have mutual aid agreements with all of our surrounding fire departments.

Fire Stations

TLMFPD is a fully *career* department that man three fire stations 24 hours a day.

- | | |
|------------------------------------|--------------------------|
| Station 1-18650 Hwy 105 | -Ladder truck and engine |
| Station 2-18460 Rollercoaster Road | -Engine |
| Station 3-1855 Woodmoor Drive | -Engine |

Response Times

Times are very difficult to predict due to inclement weather. For best estimate, Google distance from the house in question to the nearest fire station.

For more information, contact Division Chief Bumgarner at jbumgarner@tlmfire.org



TRI-LAKES MONUMENT FIRE PROTECTION DISTRICT

16055 Old Forest Point, Suite 103
Monument, CO 80132
Bus: 719.484.0911 Fax (HIPAA)
719.481.3456

Christopher Truty, Fire Chief



Date: August 13, 2020

Commitment letter to Provide Fire and Emergency Services.

To Whom It May Concern;

The Tri-Lakes Monument Fire Protection District (TLMFPD) currently provides and will continue to provide fire and emergency services to Prairie Ridge Subdivision.

The property is 4.7 miles from fire station 2 with an average response time of 9 Minutes depending on weather and road conditions.

The TLMFPD ISO rating is 3/3Y.

The ISO rating for this property is 3Y.

TLMFPD has 3 full service/full time manned

stations. Station 1 is located at 18650 Hwy 105.

Station 2 is located at 18460 Roller Coaster

Rd. Station 3 is located at 1855 Woodmoor

Dr.

Further requests for information should be direct to Fire Marshal Jamey Bumgarner at 719.484.0911 or jbumgarner@tlmfire.org

Jamey Bumgarner
Fire Marshal