



LSC TRANSPORTATION CONSULTANTS, INC.
545 East Pikes Peak Avenue, Suite 210
Colorado Springs, CO 80903
(719) 633-2868
FAX (719) 633-5430
E-mail: lsc@lsctrans.com
Website: <http://www.lsctrans.com>

Lorson Ranch East Noise Impact Study (LSC #164361) June 5, 2018

Traffic Engineer's Statement

This traffic report and supporting information were prepared under my responsible charge and they comport with the standard of care. So far as is consistent with the standard of care, said report was prepared in general conformance with the criteria established by the County for traffic reports.



Developer's Statement

I, the Developer, have read and will comply with all commitments made on my behalf within this report.

A blue ink signature of the developer, written over a horizontal line.

6/5/18
Date



LSC TRANSPORTATION CONSULTANTS, INC.
545 East Pikes Peak Avenue, Suite 210
Colorado Springs, CO 80903
(719) 633-2868
FAX (719) 633-5430
E-mail: lsc@lscctrans.com
Website: <http://www.lscctrans.com>

June 5, 2018

Mr. Jeff Mark
President
The Landhuis Company
212 North Wahsatch Avenue, Suite 301
Colorado Springs, CO 80903

RE: Lorson Ranch East
Noise Impact Study
El Paso County, Colorado
LSC #164361

Dear Mr. Mark:

In response to your request, LSC Transportation Consultants, Inc. has completed a detailed analysis of the noise impacts of Fontaine Boulevard on the proposed Lorson Ranch East residential development to be located within the Lorson Ranch development in El Paso County, Colorado. The site location is shown in Figure 1. LSC has completed an evaluation of the noise exposure for submittal to El Paso County in accordance with the Federal Highway Administration (FHWA) requirements.

LSC used the software program Traffic Noise Model Version 2.5—developed by FHWA—to predict the noise levels at 46 locations in the development. The locations are shown in Figure 2. The receiver points are located on the lot within the Lorson Ranch East development located adjacent to Fontaine Boulevard. An elevation of five feet was assumed for the receivers.

The input data for the noise predictions included traffic volumes, roadway geometry, topographic elevations, and the locations of the receivers. The analysis was completed using the projected 2040 afternoon peak-hour traffic volumes on Fontaine Boulevard. These volumes are estimated by LSC based on the 2040 total traffic volumes shown in the *Lorson Ranch East Traffic Impact Study* by LSC dated November 9, 2017 and revised January 8, 2018 and the *Lorson Ranch PK-8 School Traffic Impact and Access Analysis* by LSC dated May 11, 2018. The analysis assumes the interim Urban Non-Residential Collector cross section of Fontaine Boulevard with one through lane in each direction.

The results of the noise prediction show that in the year 2040, all locations have predicted noise levels that would not exceed 67 decibels Leq. The noise analysis inputs and outputs are attached.

* * * * *

Please contact me if you have any questions.

Respectfully submitted,

LSC TRANSPORTATION CONSULTANTS, INC.

By 

Kirstin D. Ferrin, P.E.

Senior Transportation Engineer

KDF:bjwb

Enclosures: Figures 1-2
Noise Analysis Inputs/Outputs



Approximate Scale
Scale: 1" = 300'

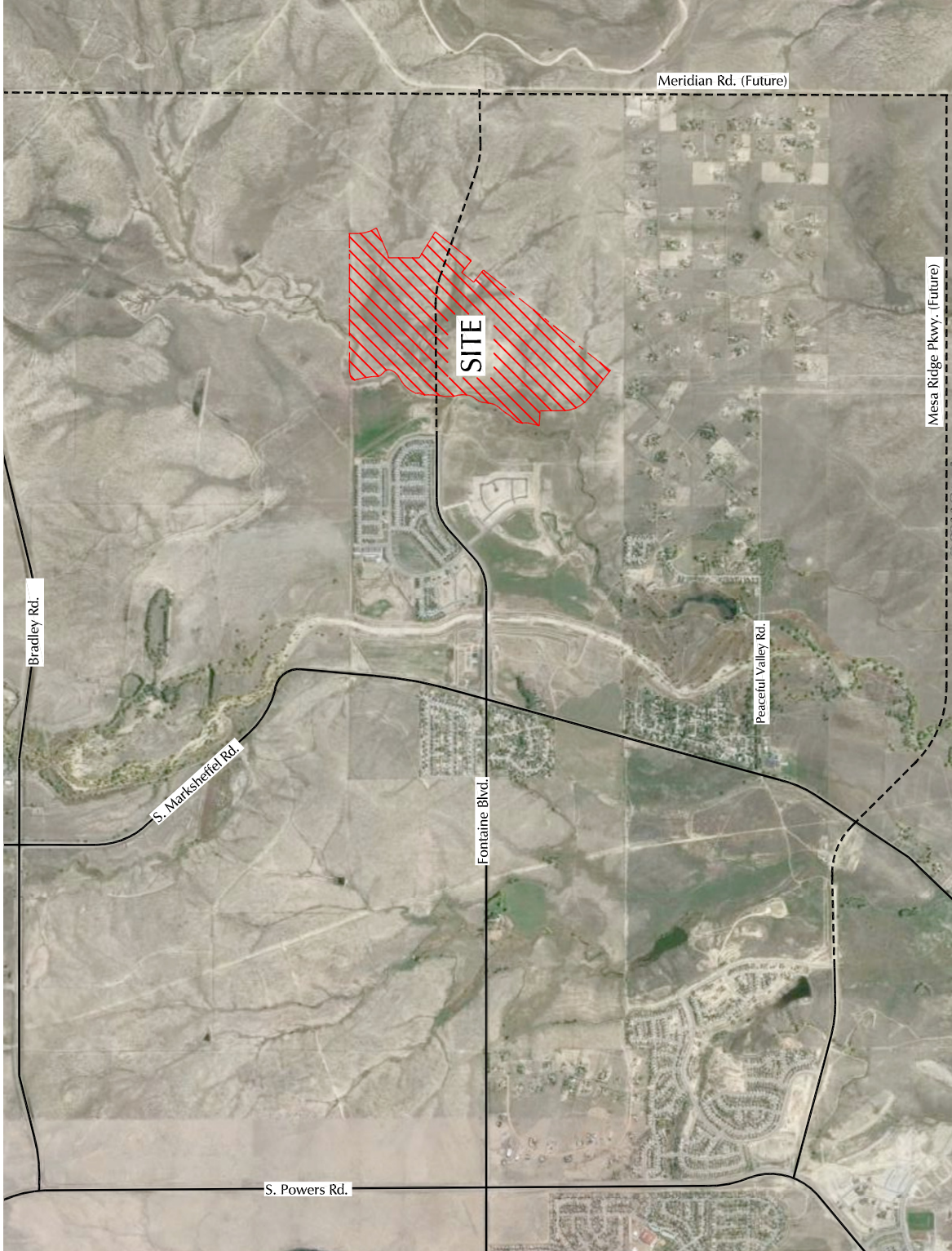


Figure 1
Vicinity
Map

Lorson Ranch East Noise Analysis (LSC #164361)

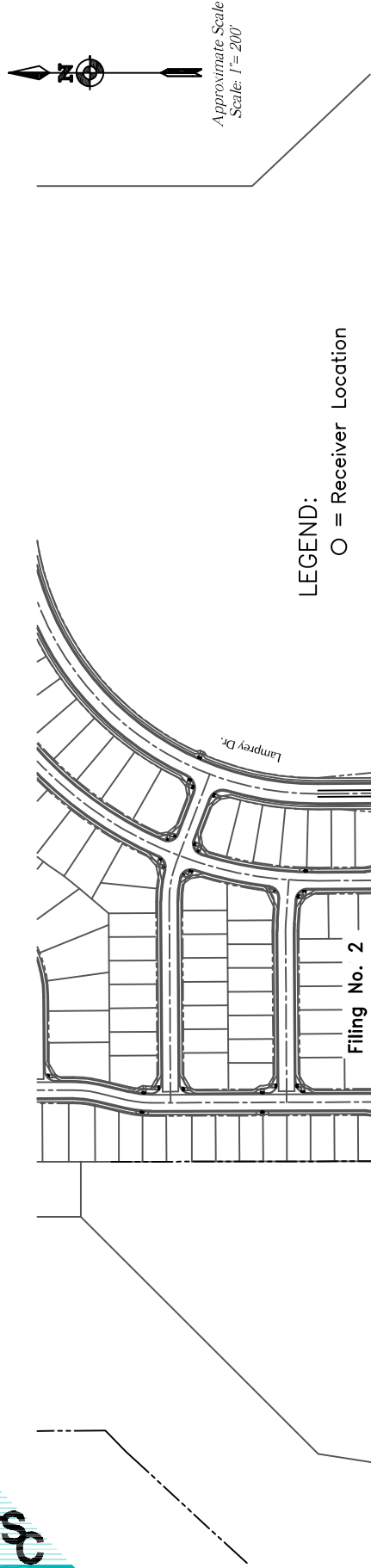


Figure 2
Reciever Locations
Lorson Ranch East Noise Analysis (LSC #164361)

RESULTS: SOUND LEVELS
Lorson Ranch East

LSC												
KDF												
RESULTS: SOUND LEVELS												
PROJECT/CONTRACT:												
RUN:												
BARRIER DESIGN:												
ATMOSPHERICS:												
Receiver												
Name	No.	#DUs	Existing	No Barrier					With Barrier			
			LAeq1h	LAeq1h			Increase over existing	Type	Calculated	Noise Reduction		
				Calculated	Crit'n	Calculated	Crit'n	Impact	LAeq1h	Calculated	Goal	Calculated
							Sub'l Inc					minus
												Goal
			dBA	dBA	dBA	dB	dB		dBA	dB	dB	dB
LRE Fil 1 91	1	1	0.0	64.2	66	64.2	10	----	64.2	0.0	8	-8.0
LRE Fil 1 90	2	1	0.0	64.2	66	64.2	10	----	64.2	0.0	8	-8.0
LRE Fil 1 89	3	1	0.0	64.2	66	64.2	10	----	64.2	0.0	8	-8.0
LRE Fil 1 88	4	1	0.0	64.2	66	64.2	10	----	64.2	0.0	8	-8.0
LRE Fil 1 87	5	1	0.0	64.2	66	64.2	10	----	64.2	0.0	8	-8.0
LRE Fil 1 86	6	1	0.0	64.2	66	64.2	10	----	64.2	0.0	8	-8.0
LRE Fil 1 85	7	1	0.0	64.2	66	64.2	10	----	64.2	0.0	8	-8.0
LRE Fil 1 84	8	1	0.0	64.2	66	64.2	10	----	64.2	0.0	8	-8.0
LRE Fil 1 83	9	1	0.0	64.3	66	64.3	10	----	64.3	0.0	8	-8.0
LRE Fil 1 82	10	1	0.0	64.3	66	64.3	10	----	64.3	0.0	8	-8.0
LRE Fil 1 81	11	1	0.0	64.3	66	64.3	10	----	64.3	0.0	8	-8.0
LRE Fil 1 80	12	1	0.0	64.3	66	64.3	10	----	64.3	0.0	8	-8.0
LRE Fil 1 79	13	1	0.0	64.4	66	64.4	10	----	64.4	0.0	8	-8.0
LRE Fil 1 78	14	1	0.0	64.5	66	64.5	10	----	64.5	0.0	8	-8.0
LRE Fil 1 77	15	1	0.0	64.6	66	64.6	10	----	64.6	0.0	8	-8.0
LRE Fil 1 76	16	1	0.0	64.6	66	64.6	10	----	64.6	0.0	8	-8.0
LRE Fil 1 75	17	1	0.0	64.7	66	64.7	10	----	64.7	0.0	8	-8.0
LRE Future 1	18	1	0.0	64.6	66	64.6	10	----	64.6	0.0	8	-8.0
LRE Future 2	19	1	0.0	63.2	66	63.2	10	----	63.2	0.0	8	-8.0
LRE Future 3	20	1	0.0	63.1	66	63.1	10	----	63.1	0.0	8	-8.0
LRE Future 4	21	1	0.0	63.1	66	63.1	10	----	63.1	0.0	8	-8.0
LRE Future 5	22	1	0.0	63.1	66	63.1	10	----	63.1	0.0	8	-8.0
LRE Future 6	23	1	0.0	63.0	66	63.0	10	----	63.0	0.0	8	-8.0
LRE Future 7	24	1	0.0	62.8	66	62.8	10	----	62.8	0.0	8	-8.0

RESULTS: SOUND LEVELS
Lorson Ranch East

LRE Future 8	25	1	0.0	62.4	66	62.4	10	----	62.4	0.0	8	-8.0
LRE Future 9	26	1	0.0	62.1	66	62.1	10	----	62.1	0.0	8	-8.0
LRE Future 10	27	1	0.0	62.0	66	62.0	10	----	62.0	0.0	8	-8.0
LRE Future 11	28	1	0.0	61.9	66	61.9	10	----	61.9	0.0	8	-8.0
LRE Future 12	29	1	0.0	61.9	66	61.9	10	----	61.9	0.0	8	-8.0
LRE Future 13	30	1	0.0	61.9	66	61.9	10	----	61.9	0.0	8	-8.0
LRE Future 14	31	1	0.0	61.9	66	61.9	10	----	61.9	0.0	8	-8.0
LRE Future 15	32	1	0.0	61.8	66	61.8	10	----	61.8	0.0	8	-8.0
LRE Future 16	33	1	0.0	61.8	66	61.8	10	----	61.8	0.0	8	-8.0
LRE Future 17	34	1	0.0	61.8	66	61.8	10	----	61.8	0.0	8	-8.0
LRE Future 18	35	1	0.0	61.8	66	61.8	10	----	61.8	0.0	8	-8.0
LRE Future 19	36	1	0.0	61.6	66	61.6	10	----	61.6	0.0	8	-8.0
LRE Fil 2 5	37	1	0.0	61.9	66	61.9	10	----	61.9	0.0	8	-8.0
LRE Fil 2 4	38	1	0.0	61.9	66	61.9	10	----	61.9	0.0	8	-8.0
LRE Fil 2 3	39	1	0.0	62.0	66	62.0	10	----	62.0	0.0	8	-8.0
LRE Fil 2 2	40	1	0.0	62.0	66	62.0	10	----	62.0	0.0	8	-8.0
LRE Fil 2 1	41	1	0.0	62.2	66	62.2	10	----	62.2	0.0	8	-8.0
LRE Fil 2 85	42	1	0.0	62.7	66	62.7	10	----	62.7	0.0	8	-8.0
LRE Fil 2 84	43	1	0.0	62.8	66	62.8	10	----	62.8	0.0	8	-8.0
LRE Fil 2 83	44	1	0.0	62.9	66	62.9	10	----	62.9	0.0	8	-8.0
LRE Fil 2 82	45	1	0.0	63.0	66	63.0	10	----	63.0	0.0	8	-8.0
LRE Fil 2 81	46	1	0.0	63.8	66	63.8	10	----	63.8	0.0	8	-8.0
Dwelling Units		# DUs	Noise Reduction									
			Min	Avg	Max							
			dB	dB	dB							
All Selected		46	0.0	0.0	0.0							
All Impacted		0	0.0	0.0	0.0							
All that meet NR Goal		0	0.0	0.0	0.0							

INPUT: TRAFFIC FOR LAeq1h Volumes

Lorson Ranch East

LSC												
KDF												
INPUT: TRAFFIC FOR LAeq1h Volumes												
PROJECT/CONTRACT:	Lorson Ranch East											
RUN:	2040 Total PM Peak Hour											
Roadway	Points											
Name	Name	No.	Segment									
			Autos		MTrucks		HTrucks		Buses		Motorcycles	
			V	S	V	S	V	S	V	S	V	S
			veh/hr	mph	veh/hr	mph	veh/hr	mph	veh/hr	mph	veh/hr	mph
EB Fontaine Blvd W/O Lamine	point25	25	1110	40	23	40	11	40	0	0	0	0
	point27	27	1110	40	23	40	11	40	0	0	0	0
	point28	28	1110	40	23	40	11	40	0	0	0	0
	point29	29	1110	40	23	40	11	40	0	0	0	0
	point30	30	1110	40	23	40	11	40	0	0	0	0
	point31	31	1110	40	23	40	11	40	0	0	0	0
	point32	32	1110	40	23	40	11	40	0	0	0	0
	point33	33	1110	40	23	40	11	40	0	0	0	0
	point26	26										
EB Fontaine Blvd W/O Edisto	point34	34	1034	40	21	40	11	40	0	0	0	0
	point36	36	1034	40	21	40	11	40	0	0	0	0
	point37	37	1034	40	21	40	11	40	0	0	0	0
	point38	38	1034	40	21	40	11	40	0	0	0	0
	point39	39	1034	40	21	40	11	40	0	0	0	0
	point40	40	1034	40	21	40	11	40	0	0	0	0
	point41	41	1034	40	21	40	11	40	0	0	0	0
	point35	35										
EB Fontaine Blvd W/O Lamprey	point42	42	1006	40	21	40	10	40	0	0	0	0
	point45	45	1006	40	21	40	10	40	0	0	0	0
	point46	46	1006	40	21	40	10	40	0	0	0	0
	point47	47	1006	40	21	40	10	40	0	0	0	0
	point48	48	1006	40	21	40	10	40	0	0	0	0
	point49	49	1006	40	21	40	10	40	0	0	0	0

INPUT: TRAFFIC FOR LAeq1h Volumes
Lorson Ranch East

	point50	50	1006	40	21	40	10	40	0	0	0	0
	point51	51	1006	40	21	40	10	40	0	0	0	0
	point43	43										
EB Fontaine Blvd W/O Rockcastle	point52	52	558	40	12	40	6	40	0	0	0	0
	point54	54	558	40	12	40	6	40	0	0	0	0
	point55	55	558	40	12	40	6	40	0	0	0	0
	point56	56	558	40	12	40	6	40	0	0	0	0
	point57	57	558	40	12	40	6	40	0	0	0	0
	point58	58	558	40	12	40	6	40	0	0	0	0
	point59	59	558	40	12	40	6	40	0	0	0	0
	point60	60	558	40	12	40	6	40	0	0	0	0
	point61	61	558	40	12	40	6	40	0	0	0	0
	point62	62	558	40	12	40	6	40	0	0	0	0
	point63	63	558	40	12	40	6	40	0	0	0	0
	point64	64	558	40	12	40	6	40	0	0	0	0
	point65	65	558	40	12	40	6	40	0	0	0	0
	point66	66	558	40	12	40	6	40	0	0	0	0
	point67	67	558	40	12	40	6	40	0	0	0	0
	point68	68	558	40	12	40	6	40	0	0	0	0
	point69	69	558	40	12	40	6	40	0	0	0	0
	point70	70	558	40	12	40	6	40	0	0	0	0
	point71	71	558	40	12	40	6	40	0	0	0	0
	point72	72	558	40	12	40	6	40	0	0	0	0
	point73	73	558	40	12	40	6	40	0	0	0	0
	point74	74	558	40	12	40	6	40	0	0	0	0
	point53	53										
EB Fontaine Blvd E/O Rockcastle	point75	75	552	40	11	40	6	40	0	0	0	0
	point78	78	552	40	11	40	6	40	0	0	0	0
	point79	79	552	40	11	40	6	40	0	0	0	0
	point76	76										
WB Fontaine Blvd E/O Rockcastle	point80	80	319	40	7	40	3	40	0	0	0	0
	point82	82	319	40	7	40	3	40	0	0	0	0
	point83	83	319	40	7	40	3	40	0	0	0	0
	point81	81										
WB Fontaine Blvd W/O Rockcastle	point84	84	327	40	7	40	3	40	0	0	0	0
	point86	86	327	40	7	40	3	40	0	0	0	0

INPUT: TRAFFIC FOR LAeq1h Volumes
Lorson Ranch East

	point87	87	327	40	7	40	3	40	0	0	0	0
	point88	88	327	40	7	40	3	40	0	0	0	0
	point89	89	327	40	7	40	3	40	0	0	0	0
	point90	90	327	40	7	40	3	40	0	0	0	0
	point91	91	327	40	7	40	3	40	0	0	0	0
	point92	92	327	40	7	40	3	40	0	0	0	0
	point93	93	327	40	7	40	3	40	0	0	0	0
	point94	94	327	40	7	40	3	40	0	0	0	0
	point95	95	327	40	7	40	3	40	0	0	0	0
	point96	96	327	40	7	40	3	40	0	0	0	0
	point97	97	327	40	7	40	3	40	0	0	0	0
	point98	98	327	40	7	40	3	40	0	0	0	0
	point99	99	327	40	7	40	3	40	0	0	0	0
	point100	100	327	40	7	40	3	40	0	0	0	0
	point101	101	327	40	7	40	3	40	0	0	0	0
	point102	102	327	40	7	40	3	40	0	0	0	0
	point103	103	327	40	7	40	3	40	0	0	0	0
	point104	104	327	40	7	40	3	40	0	0	0	0
	point105	105	327	40	7	40	3	40	0	0	0	0
	point106	106	327	40	7	40	3	40	0	0	0	0
	point85	85										
WB Fontaine Blvd W/O Lamprey	point107	107	613	40	13	40	6	40	0	0	0	0
	point109	109	613	40	13	40	6	40	0	0	0	0
	point110	110	613	40	13	40	6	40	0	0	0	0
	point111	111	613	40	13	40	6	40	0	0	0	0
	point112	112	613	40	13	40	6	40	0	0	0	0
	point113	113	613	40	13	40	6	40	0	0	0	0
	point114	114	613	40	13	40	6	40	0	0	0	0
	point108	108										
WB Fontaine Blvd W/O Edisto	point132	132	630	40	13	40	6	40	0	0	0	0
	point134	134	630	40	13	40	6	40	0	0	0	0
	point135	135	630	40	13	40	6	40	0	0	0	0
	point136	136	630	40	13	40	6	40	0	0	0	0
	point137	137	630	40	13	40	6	40	0	0	0	0
	point138	138	630	40	13	40	6	40	0	0	0	0
	point139	139	630	40	13	40	6	40	0	0	0	0

INPUT: TRAFFIC FOR LAeq1h Volumes**Lorson Ranch East**

	point140	140	630	40	13	40	6	40	0	0	0	0
	point133	133										
WB Fontaine Blvd W/O Lamine	point141	141	673	40	14	40	7	40	0	0	0	0
	point143	143	673	40	14	40	7	40	0	0	0	0
	point144	144	673	40	14	40	7	40	0	0	0	0
	point145	145	673	40	14	40	7	40	0	0	0	0
	point146	146	673	40	14	40	7	40	0	0	0	0
	point147	147	673	40	14	40	7	40	0	0	0	0
	point142	142										

INPUT: ROADWAYS
Lorson Ranch East

LSC											
KDF											
INPUT: ROADWAYS								Average pavement type shall be used unless			
PROJECT/CONTRACT:				Lorson Ranch East				a State highway agency substantiates the use			
RUN:				2040 Total PM Peak Hour				of a different type with the approval of FHWA			
Roadway		Points									
Name	Width	Name	No.	Coordinates (pavement)			Flow Control			Segment	
				X	Y	Z	Control	Speed	Percent	Pvmt	On
							Device	Constraint	Vehicles	Type	Struct?
									Affected		
	ft			ft	ft	ft		mph	%		
EB Fontaine Blvd W/O Lamine	12.0	point25	25	25,149.8	23,588.1	5,718.00				Average	
		point27	27	25,228.0	23,589.5	5,717.00				Average	
		point28	28	25,345.7	23,593.3	5,716.00				Average	
		point29	29	25,520.3	23,613.6	5,716.00				Average	
		point30	30	25,627.4	23,617.0	5,717.00				Average	
		point31	31	25,736.2	23,617.8	5,718.00				Average	
		point32	32	25,844.7	23,614.7	5,719.00				Average	
		point33	33	26,035.5	23,602.0	5,719.00				Average	
		point26	26	26,112.6	23,600.9	5,719.00					
EB Fontaine Blvd W/O Edisto	12.0	point34	34	26,117.3	23,600.9	5,719.00				Average	
		point36	36	26,228.9	23,601.7	5,720.00				Average	
		point37	37	26,323.7	23,602.6	5,721.00				Average	
		point38	38	26,418.9	23,603.2	5,722.00				Average	
		point39	39	26,514.7	23,603.7	5,723.00				Average	
		point40	40	26,609.5	23,604.4	5,724.00				Average	
		point41	41	26,705.0	23,605.1	5,725.00				Average	
		point35	35	26,797.5	23,605.8	5,726.00					
EB Fontaine Blvd W/O Lamprey	12.0	point42	42	26,802.2	23,605.8	5,726.00				Average	
		point45	45	26,895.7	23,606.4	5,727.00				Average	
		point46	46	26,990.5	23,607.1	5,728.00				Average	
		point47	47	27,047.8	23,607.5	5,728.50				Average	
		point48	48	27,081.3	23,609.4	5,729.00				Average	
		point49	49	27,107.7	23,607.7	5,729.00				Average	
		point50	50	27,133.3	23,597.3	5,729.00				Average	
		point51	51	27,177.8	23,566.8	5,729.00				Average	

INPUT: ROADWAYS
Lorson Ranch East

		point43	43	27,212.8	23,556.2	5,730.00					
EB Fontaine Blvd W/O Rockcastle	12.0	point52	52	27,217.5	23,555.6	5,730.00	Onramp	15.00	100	Average	
		point54	54	27,223.4	23,556.1	5,730.00				Average	
		point55	55	27,277.6	23,578.7	5,730.00				Average	
		point56	56	27,312.4	23,593.3	5,730.50				Average	
		point57	57	27,336.9	23,600.6	5,731.00				Average	
		point58	58	27,392.3	23,609.4	5,732.00				Average	
		point59	59	27,454.7	23,610.3	5,733.00				Average	
		point60	60	27,509.3	23,610.7	5,734.00				Average	
		point61	61	27,552.0	23,611.0	5,735.00				Average	
		point62	62	27,592.1	23,611.3	5,736.00				Average	
		point63	63	27,632.1	23,611.4	5,737.00				Average	
		point64	64	27,671.6	23,611.7	5,738.00				Average	
		point65	65	27,711.7	23,610.3	5,739.00				Average	
		point66	66	27,752.1	23,608.1	5,740.00				Average	
		point67	67	27,800.2	23,604.0	5,741.00				Average	
		point68	68	27,869.6	23,595.4	5,742.00				Average	
		point69	69	27,962.4	23,578.5	5,743.00				Average	
		point70	70	28,053.9	23,555.9	5,744.00				Average	
		point71	71	28,143.9	23,527.5	5,745.00				Average	
		point72	72	28,234.3	23,496.4	5,746.00				Average	
		point73	73	28,324.3	23,465.4	5,747.00				Average	
		point74	74	28,414.3	23,434.3	5,748.00				Average	
		point53	53	28,502.1	23,404.0	5,749.00					
EB Fontaine Blvd E/O Rockcastle	12.0	point75	75	28,506.6	23,402.5	5,749.00				Average	
		point78	78	28,594.3	23,372.4	5,750.00				Average	
		point79	79	28,684.6	23,341.3	5,751.00				Average	
		point76	76	28,752.1	23,317.9	5,752.00					
WB Fontaine Blvd E/O Rockcastle	12.0	point80	80	28,761.0	23,340.5	5,752.00				Average	
		point82	82	28,692.6	23,364.0	5,751.00				Average	
		point83	83	28,601.8	23,395.2	5,750.00				Average	
		point81	81	28,514.6	23,425.3	5,749.00					
WB Fontaine Blvd W/O Rockcastle	12.0	point84	84	28,510.1	23,426.8	5,749.00				Average	
		point86	86	28,422.3	23,457.0	5,748.00				Average	
		point87	87	28,332.0	23,488.1	5,747.00				Average	
		point88	88	28,241.7	23,519.1	5,746.00				Average	
		point89	89	28,152.0	23,550.1	5,745.00				Average	
		point90	90	28,060.4	23,578.9	5,744.00				Average	
		point91	91	27,967.2	23,601.9	5,743.00				Average	

INPUT: ROADWAYS
Lorson Ranch East

		point92	92	27,873.1	23,619.2	5,742.00				Average	
		point93	93	27,802.6	23,627.9	5,741.00				Average	
		point94	94	27,753.5	23,632.1	5,740.00				Average	
		point95	95	27,712.5	23,634.5	5,739.00				Average	
		point96	96	27,672.3	23,635.5	5,738.00				Average	
		point97	97	27,631.9	23,635.6	5,737.00				Average	
		point98	98	27,591.7	23,635.1	5,736.00				Average	
		point99	99	27,551.9	23,635.0	5,735.00				Average	
		point100	100	27,509.2	23,634.7	5,734.00				Average	
		point101	101	27,454.5	23,634.3	5,733.00				Average	
		point102	102	27,391.8	23,633.9	5,732.00				Average	
		point103	103	27,345.5	23,633.5	5,731.00				Average	
		point104	104	27,316.0	23,637.1	5,730.50				Average	
		point105	105	27,293.4	23,648.0	5,730.00				Average	
		point106	106	27,249.4	23,675.7	5,729.50				Average	
		point85	85	27,216.5	23,685.1	5,729.50					
WB Fontaine Blvd W/O Lamprey	12.0	point107	107	27,211.9	23,685.3	5,729.50	Onramp	15.00	100	Average	
		point109	109	27,186.2	23,679.3	5,729.50				Average	
		point110	110	27,163.5	23,668.3	5,729.50				Average	
		point111	111	27,091.1	23,640.3	5,729.00				Average	
		point112	112	27,018.9	23,631.3	5,728.50				Average	
		point113	113	26,989.8	23,631.1	5,728.00				Average	
		point114	114	26,895.4	23,630.4	5,727.00				Average	
		point108	108	26,802.1	23,629.7	5,726.00					
WB Fontaine Blvd W/O Edisto	12.0	point132	132	26,797.3	23,629.6	5,726.00				Average	
		point134	134	26,704.5	23,629.0	5,725.00				Average	
		point135	135	26,609.4	23,628.4	5,724.00				Average	
		point136	136	26,514.5	23,627.7	5,723.00				Average	
		point137	137	26,418.9	23,627.0	5,722.00				Average	
		point138	138	26,323.5	23,626.4	5,721.00				Average	
		point139	139	26,229.1	23,625.7	5,720.00				Average	
		point140	140	26,114.5	23,624.9	5,719.00				Average	
		point133	133	26,037.3	23,625.7	5,719.00					
WB Fontaine Blvd W/O Lamine	12.0	point141	141	26,032.6	23,625.9	5,719.00				Average	
		point143	143	25,846.2	23,638.8	5,719.00				Average	
		point144	144	25,735.9	23,641.8	5,718.00				Average	
		point145	145	25,626.9	23,641.0	5,717.00				Average	
		point146	146	25,520.8	23,640.3	5,716.00				Average	
		point147	147	25,292.3	23,638.7	5,716.00				Average	

INPUT: ROADWAYS

Lorson Ranch East

		point142	142	25,205.5	23,638.1	5,717.00					
--	--	----------	-----	----------	----------	----------	--	--	--	--	--

INPUT: RECEIVERS
Lorson Ranch East

LSC											
KDF											
INPUT: RECEIVERS											
PROJECT/CONTRACT:	Lorson Ranch East										
RUN:	2040 Total PM Peak Hour										
Receiver											
Name	No.	#DUs	Coordinates (ground)			Height	Input Sound Levels and Criteria				Active
			X	Y	Z	above	Existing	Impact Criteria	NR		in
						Ground	L _{Aeq} 1h	L _{Aeq} 1h	Sub'l	Goal	Calc.
			ft	ft	ft	ft	dBA	dBA	dB	dB	
LRE Fil 1 91	1	1	26,128.7	23,533.1	5,720.50	4.92	0.00	66	10.0	8.0	Y
LRE Fil 1 90	2	1	26,182.4	23,533.1	5,722.00	4.92	0.00	66	10.0	8.0	Y
LRE Fil 1 89	3	1	26,231.1	23,533.8	5,722.50	4.92	0.00	66	10.0	8.0	Y
LRE Fil 1 88	4	1	26,281.1	23,534.0	5,722.50	4.92	0.00	66	10.0	8.0	Y
LRE Fil 1 87	5	1	26,331.1	23,534.3	5,722.50	4.92	0.00	66	10.0	8.0	Y
LRE Fil 1 86	6	1	26,381.1	23,534.9	5,723.50	4.92	0.00	66	10.0	8.0	Y
LRE Fil 1 85	7	1	26,431.1	23,535.2	5,724.50	4.92	0.00	66	10.0	8.0	Y
LRE Fil 1 84	8	1	26,548.7	23,535.9	5,725.50	4.92	0.00	66	10.0	8.0	Y
LRE Fil 1 83	9	1	26,611.3	23,536.5	5,726.50	4.92	0.00	66	10.0	8.0	Y
LRE Fil 1 82	10	1	26,666.3	23,536.9	5,727.00	4.92	0.00	66	10.0	8.0	Y
LRE Fil 1 81	11	1	26,716.3	23,537.2	5,727.50	4.92	0.00	66	10.0	8.0	Y
LRE Fil 1 80	12	1	26,766.3	23,537.6	5,728.00	4.92	0.00	66	10.0	8.0	Y
LRE Fil 1 79	13	1	26,816.2	23,538.0	5,728.50	4.92	0.00	66	10.0	8.0	Y
LRE Fil 1 78	14	1	26,866.2	23,538.3	5,729.00	4.92	0.00	66	10.0	8.0	Y
LRE Fil 1 77	15	1	26,916.2	23,538.7	5,729.50	4.92	0.00	66	10.0	8.0	Y
LRE Fil 1 76	16	1	26,971.2	23,538.8	5,730.00	4.92	0.00	66	10.0	8.0	Y
LRE Fil 1 75	17	1	27,068.6	23,539.5	5,731.50	4.92	0.00	66	10.0	8.0	Y
LRE Future 1	18	1	27,350.9	23,541.7	5,733.00	4.92	0.00	66	10.0	8.0	Y
LRE Future 2	19	1	27,465.2	23,542.5	5,735.50	4.92	0.00	66	10.0	8.0	Y
LRE Future 3	20	1	27,515.2	23,542.9	5,736.00	4.92	0.00	66	10.0	8.0	Y
LRE Future 4	21	1	27,565.2	23,543.2	5,737.50	4.92	0.00	66	10.0	8.0	Y
LRE Future 5	22	1	27,615.0	23,543.6	5,738.50	4.92	0.00	66	10.0	8.0	Y

INPUT: RECEIVERS**Lorson Ranch East**

LRE Future 6	23	1	27,667.7	23,543.4	5,740.00	4.92	0.00	66	10.0	8.0	Y
LRE Future 7	24	1	27,721.7	23,541.8	5,741.50	4.92	0.00	66	10.0	8.0	Y
LRE Future 8	25	1	27,779.8	23,537.5	5,743.00	4.92	0.00	66	10.0	8.0	Y
LRE Future 9	26	1	27,843.9	23,530.2	5,744.00	4.92	0.00	66	10.0	8.0	Y
LRE Future 10	27	1	27,907.6	23,519.9	5,744.50	4.92	0.00	66	10.0	8.0	Y
LRE Future 11	28	1	27,970.7	23,506.8	5,745.50	4.92	0.00	66	10.0	8.0	Y
LRE Future 12	29	1	28,033.2	23,490.9	5,746.00	4.92	0.00	66	10.0	8.0	Y
LRE Future 13	30	1	28,094.6	23,472.3	5,746.75	4.92	0.00	66	10.0	8.0	Y
LRE Future 14	31	1	28,153.2	23,452.6	5,747.50	4.92	0.00	66	10.0	8.0	Y
LRE Future 15	32	1	28,209.9	23,433.1	5,748.00	4.92	0.00	66	10.0	8.0	Y
LRE Future 16	33	1	28,266.6	23,413.5	5,748.75	4.92	0.00	66	10.0	8.0	Y
LRE Future 17	34	1	28,323.3	23,394.0	5,749.50	4.92	0.00	66	10.0	8.0	Y
LRE Future 18	35	1	28,380.1	23,374.5	5,750.00	4.92	0.00	66	10.0	8.0	Y
LRE Future 19	36	1	28,439.6	23,354.0	5,750.00	4.92	0.00	66	10.0	8.0	Y
LRE Fil 2 5	37	1	26,549.5	23,711.0	5,725.50	4.92	0.00	66	10.0	8.0	Y
LRE Fil 2 4	38	1	26,621.0	23,711.5	5,726.50	4.92	0.00	66	10.0	8.0	Y
LRE Fil 2 3	39	1	26,681.2	23,711.9	5,727.00	4.92	0.00	66	10.0	8.0	Y
LRE Fil 2 2	40	1	26,726.2	23,712.2	5,728.00	4.92	0.00	66	10.0	8.0	Y
LRE Fil 2 1	41	1	26,773.7	23,712.6	5,728.00	4.92	0.00	66	10.0	8.0	Y
LRE Fil 2 85	42	1	26,873.7	23,713.1	5,728.00	4.92	0.00	66	10.0	8.0	Y
LRE Fil 2 84	43	1	26,921.2	23,713.6	5,729.50	4.92	0.00	66	10.0	8.0	Y
LRE Fil 2 83	44	1	26,966.2	23,713.8	5,730.00	4.92	0.00	66	10.0	8.0	Y
LRE Fil 2 82	45	1	27,011.2	23,714.1	5,730.00	4.92	0.00	66	10.0	8.0	Y
LRE Fil 2 81	46	1	27,081.1	23,714.7	5,731.00	4.92	0.00	66	10.0	8.0	Y